



Climate, snow, and soil moisture data set for the Tuolumne and Merced River watersheds, California, USA

James W. Roche^{1,2}, Robert Rice³, Xiande Meng³, Daniel R. Cayan⁴, Michael D. Dettinger⁵, Douglas Alden⁴, Sarina C. Patel⁶, Megan A. Mason⁷, Martha H. Conklin³, and Roger C. Bales³

5 ¹Yosemite National Park, USDOI National Park Service, El Portal, CA, 95318, USA

²Environmental Systems Graduate Group, University of California, Merced, CA, 95340, USA

³Sierra Nevada Research Institute, University of California, Merced, Merced, CA, 95340, USA

⁴Climate, Atmospheric Sciences, and Physical Oceanography, Scripps Institution of Oceanography, University of California, San Diego, La Jolla, CA, 92093, USA

10 ⁵US Geological Survey, Carson City, NV, 89701, USA

⁶Earth and Planetary Science, University of California, Berkeley, Berkeley, CA, 94720

⁷Department of Geosciences, Boise State University, Boise, ID, 83725

Correspondence to: James W. Roche (jim_roche@nps.gov)

Abstract. We present hourly climate data to force land surface process models and assessments over the Merced and
15 Tuolumne watersheds in the Sierra Nevada, California, for the water year 2010-2014 period. Climate data (38 stations)
includes temperature and humidity (23), precipitation (13), solar radiation (8), and wind speed and direction (8) spanning an
elevation range of 333 to 2987 m. Each data set contains raw data as obtained from the source (level 0), data that are serially
continuous with noise and non-physical points removed (level 1), and, where possible, data that are gap-filled using linear
interpolation or regression with a nearby station record (level 2). All stations chosen for this data set were known or
20 documented to be regularly maintained and components checked and calibrated during the period. Additional time-series
data included are available snow water equivalent records from automated stations (8) and manual snow courses (22), as
well as distributed snow-depth and co-located soil-moisture measurements (2-6) from four locations spanning the rain-to-
snow transition zone in the centre of the domain. Spatial data layers pertinent to snowpack modelling in this data set are
basin polygons and 100-m resolution rasters of elevation, vegetation type, forest basal area, tree height, and forest canopy
25 cover, transmissivity, and extinction coefficient. All data are available from online data repositories
(<https://doi.org/10.6071/M3FH3D>).

1 Introduction

The snowpack of the Sierra Nevada mountains provides at least 40% of California's water supply (Roos, 1989) and has
historically stored an amount of water equivalent to more than half of the available Sierra foothill reservoir storage (Bales et
30 al., 2011). Snowpack in the western U.S. is highly vulnerable to climate warming, both in the recent past (Mote et al., 2005)
and as expected in the coming decades, particularly at lower elevations (Fyfe et al., 2017; Miller et al., 2003; Young et al.,



2009). Melting snow sustains soil moisture, streams, and other water sources well into the very dry and warm Mediterranean summer that typifies the area (e.g. Yarnell et al., 2010). Building our intuition about the sensitivity of the snowpack to current and future climates, as well as storm paths and timing, is critical to the future management of these areas. Snowpack water storage affects forest fire, forest health, invasive and threatened species, recreation, flooding, and local and downstream water supplies (Brekke et al., 2009; Dettinger, 2011; Ligare et al., 2012; Miller et al., 2009; Sala et al., 2000).

Soil moisture is the other major component of water storage in mountain ecosystems. As snowpack storage diminishes, it will be essential to understand changes in soil moisture as it pertains to plant-available water, evapotranspiration, and, ultimately, forest health (e.g. Bales et al., 2018; Asner et al., 2016). The 2012-2016 California drought, including the 2015 “snow drought” (Harpold et al., 2017), and associated large-scale forest mortality highlight the importance of assessments that investigate the coupled changes in snowpack and soil moisture in mountain forests.

The purpose of this paper is to introduce climate, soil-moisture, snow, and spatial data that may be used for hydrologic or land-surface assessments and modelling in the Tuolumne and Merced watersheds in the Sierra Nevada mountains of central California (Figure 1; Tables 1, 2, 3). Hourly climate data and snow and soil-moisture measurements were derived from stations within and immediately adjacent to the basins. Spatial data include basin polygon files and 100-m resolution raster files of elevation, and vegetation properties. We describe data sources, processing, limitations, and where to obtain the data.

2 Area description

The study basins are west-draining watersheds on the broad western slope of the Sierra Nevada and ultimately tributaries to the San Joaquin River. The climate is generally characterized by cool, wet winters and long warm, dry summers. Winter storms derive from large synoptic systems from the northern Pacific and more-focused and moisture-laden atmospheric rivers from further south in the Pacific. Indeed, the latter may produce 20-50% of annual precipitation for the area, and just a few storms may determine the difference between above-average water years and drought (Dettinger, 2011). Within the seasonal snow zone above 1800 m elevation, much of the landscape consists of broad interflues between deep river canyons



on the Merced and Tuolumne Rivers, the area of Yosemite National Park. Most snowmelt runoff is generated between 2100 and 3000 m elevation, with up to 40% of runoff originating from elevations greater than 3000 m above existing measurements (Rice et al., 2011). Nearly 60% of the snowpack zone lies between the elevations of 2000 and 3000 m (Rice et al., 2011) and small changes in temperature during storms can result in large changes in runoff due to shifts in precipitation phase. This is illustrated in Figure 2, where wet-season winter temperatures in this zone hover close to 0°C in representative wet and dry years in the data set.

Dominant vegetation ranges from moisture-limited grasslands and oak woodlands below 1000 m elevation through ponderosa, mixed-conifer (sugar pine, incense cedar, Jeffrey pine, and white fir), and red-fir forests, to energy-limited western white and lodgepole pine forests at and above 2500 m (Fites-Kaufman et al., 2007; Keeler-Wolf et al., 2012). Some of the largest and most productive forests in the world are located in the 1500-2000 m elevation range where there is neither moisture nor energy limitation (Kelly & Goulden, 2016; Matchett et al., 2015). Here, the mean winter temperature is a few degrees above freezing and precipitation averages 1100-1200 mm yr⁻¹ (PRISM Climate Group, 2012).

Like all major river basins in California, the Tuolumne and Merced are vitally important water sources to the economy of the region. The watersheds provide water for a large agricultural region of the Central Valley between Merced in the south to Modesto in the north, fed primarily by Lake McClure on the Merced and Lake Don Pedro on the Tuolumne River. Further upstream on the Tuolumne River, the Hetch Hetchy water system supplies water to 2.6 million San Francisco and other Bay Area residents.

3 Climate data

The original intent of assembling this dataset was to force the snow energy- and mass-balance model iSnobal (Marks et al., 1999) at an hourly time step. The data represent the required parameters to drive the model: incoming solar radiation, temperature, relative humidity, wind speed and direction, and precipitation. That modelling effort (Roche et al., 2018) employed a subset of this data archive, which is described in succeeding sections (bold attributes in Table 2). Data were



obtained from the California Data Exchange Center (CDEC) for California Department of Water Resources stations, Western Regional Climate Center for Fire Remote Access Weather Station (RAWS) network stations, and the Scripps Institution of Oceanography (SIO), which operates a transect of stations across the Sierra through the middle of the study domain. All raw data (Level 0) were processed to be serially continuous and to remove noise and non-physical data (Level 1) and gap-filled where possible using linear interpolation and regression with nearby stations (Level 2). Very few stations adequately measured all parameters and several stations have extensive periods with no data that precluded gap filling. As is typical in large mountain basins, instrumentation distribution is not uniform, often located where it is convenient to service, and heavily weighted to the lower elevations. More than two-thirds of the stations are below 2000 m elevation and no stations are located above 3000 m (Figures 1, 2). Above 1800 m, where seasonal snowpack occurs, there are three precipitation measurement stations, two of which are rain-shadow affected (Figure 1). For this paper we have added the additional meteorological station and soil moisture data available in the same area, which provides a more complete hydrologic data set.

3.1 Temperature and humidity

Paired temperature ($^{\circ}\text{C}$) and relative humidity (KPa KPa^{-1}) used for snow modelling were measured at 23 stations in this dataset. Stations were chosen for modelling given known maintenance records at each site that assured minimal drift and accurate subsequent calculation of dew point and vapour pressure. Figure 3 illustrates dew-point and air temperature variability as recorded at Crane Flat Lookout over a two-week period in late 2012 and early 2013. Also shown is the dew-point lapse rate (using the methods of Marks et al. (1999)), which averaged -0.0055 and $-0.0065^{\circ}\text{C m}^{-1}$ during and between precipitation events. Temperature gradient varied from -0.0075 to $-0.0044^{\circ}\text{C m}^{-1}$ during wet periods and -0.0079 to $0.0016^{\circ}\text{C m}^{-1}$ during dry periods.

3.2 Precipitation

Hourly precipitation (mm) was the most difficult parameter to obtain and process. The best quality records were those obtained from stations equipped with tipping-bucket gauges that were below 1000 m elevation where snow and ice are minimal. Weighing gauges in Yosemite Valley (1208 m), Yosemite South Entrance (1511 m), and Stanislaus Powerhouse



(333 m), and Geonor™ gauges at Hetch Hetchy (1195 m) and the Crane Flat NOAA Climate Reference Network site (2017 m) were regularly maintained and appear to produce acceptable data. The only two high-elevation gauges were at Tuolumne Meadows (TUM) and Virginia Lakes Ridge (VLR) and both were accumulation-type gauges equipped with pressure transducers. The records from these gauges exhibit substantial diurnal expansion and contraction effects adding uncertainty to the hourly records. To process these records, we first established a daily record by extracting the midnight value to minimize heating and cooling effects, differencing from the previous day and removing any negative values. For days with zero midnight values, all hourly values were set to zero. For days with non-zero accumulation, we first set all negative incremental values to zero and we examined data from the adjacent snow pillows, other stations with snow pillows in the vicinity, and compared the records of both TUM and VLR in order to weight the positive increments such that the sum equalled the daily total. Given that these gauges recorded 50-60% of PRISM estimates in their respective elevation bands in water years 2011 and 2013 (Figure 2), the use of these records may be primarily to weight snow-pillow records as approximate measures of precipitation elsewhere in the basin (e.g. Lundquist et al., 2016), or as simple measures of precipitation timing rather than quantity.

3.3 Wind speed and direction

For snow modelling, we selected wind data from eight sites that were primarily located on open ridge lines in order to avoid the terrain- or forest-influenced winds. Terrain and vegetation effects could then be modelled using methods such as those of Winstral et al. (2009). Additional stations such as Tioga Pass Entrance Station (TES) and Gin Flat (GIN) provided a reference for forest wind speeds.

3.4 Solar radiation

All stations measured solar radiation using pyranometers that introduce substantial aspherical effects at dawn and dusk. Moreover, their calibration history was not known. Hence, the sites chosen for snow modelling were those with a largely complete record that spanned the domain and that exhibited minimal vegetation and terrain shading. As such, this record is best used as an estimate of cloudiness when combined with an independent estimate of incoming clear-sky solar radiation at each site. Other stations in the dataset exhibit substantially more terrain and vegetation shading influences.



4 Snow and soil moisture data

4.1 Snow water equivalent

We extracted all available monthly snow course and daily snow pillow data from CDEC for purposes of evaluating snow modelling performance. Missing snow-course data were not gap-filled, given substantial inter-site variability. Snow-pillow
5 data were checked for serial completeness and outliers and gap filled using linear interpolation only.

4.2 Snow depth and soil moisture

Snow-depth data were collected at four locations spanning the rain-to-snow transition zone along the Tioga Road at the Merced Grove (1810 m), Gin Flat (2149 m), Smoky Jack (2182 m), and Olmsted Quarry (2604 m). Each site contained 2-6 operational snow depth sensors arranged to sample various aspects and tree canopy cover. Snow data were filtered to remove
10 unrealistic depths and checked for serial continuity (Level 1) and then gap-filled using linear interpolation for periods of a few hours and regression with adjacent stations for larger gaps (Level 2). Soil-moisture data, included volumetric soil-moisture content and soil temperature, was collected at depths of 10, 30, 60, and, where possible, 90 cm below the ground surface at three of the snow depth measurement points within each of the four sites. Soil moisture data were processed in a manner similar to other measurements.

15 5 Spatial data

Spatial data included in this data set are basin polygons and raster files. All spatial data are in Universal Transverse Mercator (UTM) Zone 11 projection with the 1983 North American Datum. Basin polygons are in Earth Systems Research Institute (ESRI) ArcGIS shapefile format while raster files are in ESRI ArcGIS ASCII grid format. Raster files include 100-m resolution elevation (m), canopy cover (percent), generalized vegetation type, derived tree height (m), derived canopy
20 transmissivity (dimensionless), and canopy extinction coefficient (m^{-1}) (Table 4). The digital elevation model (DEM) was derived by resampling the 10-meter U.S. Geological Survey National Elevation Dataset (NED) using bilinear interpolation. All other raster data sets were aligned with this DEM. The resulting raster contained 1296 columns and 1107 rows. Vegetation type, canopy cover, and tree basal area were derived from the U.S. Forest Service 30-meter resolution California Region 5 Vegetation Maps (U.S. Forest Service, 2014) by determining the dominant over-story vegetation in each raster cell



(Wildlife Habitat Relation (WHR) Lifeform), or spatially averaging canopy cover or basal area within each raster cell. We calculated tree height using basal area and the allometric relation of Zhao et al. (2012). The WHR Lifeform designation was used to assign canopy transmissivity and extinction coefficients to each pixel as shown in Table 2 based on the values from Link and Marks (1999). Basin polygons for the Merced and Tuolumne watersheds are in ESRI ArcGIS shapefile format.

5 6 Data availability

All data presented in this paper are available on the California Digital Library (<https://doi.org/10.6071/M3FH3D>). Detailed metadata are associated with each file including contact information.

7 Summary

The dataset assembled here represents the nature of data available in sparsely instrumented mountain basins coupled with the higher-quality SIO Sierra transect and complimentary snow-depth and soil-moisture dataset that has undergone quality control and gap filling. While it was used for one snow-modelling effort (Roche et al, 2018), there are many opportunities to use the data for other applications, combining available raster datasets (PRISM, Basin Characterization Model, etc.), and testing the sensitivity of using more or fewer stations for estimating the attribute of interest. One outstanding use of the dataset is an assessment of the temporal evolution of soil moisture with respect to snow accumulation and ablation across the rain-to-snow transition zone. Given the stark lack of measured short- and long-wave radiation in the watershed, other estimates of these attributes may be used to explore the sensitivity of model results. It is important for these kinds of data to be available for longer periods of time and in other watersheds in order to apply data-driven land surface modelling efforts that seek to minimize calibration in order to more robustly assess stressors on ecosystems.

Author contributions

20 RB, RR, MD, DC, DA, and MC designed the University of California Merced (UCM) and Scripps Institution of Oceanography (SIO) instrument networks. RR, DC, MD, DA, and JR installed and maintained these same networks. DA,



RR, XM, JR, SP, and MM processed UCM, SIO, and external network station data. JR prepared the manuscript with contributions from all authors.

Competing interests

The authors declare that they have no conflicts of interest.

5 Special issue statement

This article is part of the special issue “Hydrometeorological data from mountain and alpine research catchments”. It is not associated with a conference.

Acknowledgements

Support for this research was provided by the Yosemite Conservancy, the Merced Irrigation District through the California Integrated Regional Watershed Management Program (IRWMP), the Southern Sierra Critical Zone Observatory (Grant number EAR-1331939), and the University of California Water Security and Sustainability Research Initiative. We acknowledge the contributions of Esther Canal, Anna Chovanes, and Haley Ramirez for their assistance with preparing the distributed snow depth data.

References

- 15 Asner, G. P., Brodrick, P. G., Anderson, C. B., Vaughn, N., Knapp, D. E., and Martin, R. E.: Progressive forest canopy water loss during the 2012-2015 California drought, *Proceedings of the National Academy of Sciences of the United States of America*, 113(2), E249-55. doi: 10.1073/pnas.1523397113, 2016.
- Bales, R. C., Battles, J. J., Chen, Y., Conklin, M. H., Holst, E., O'Hara, K. L., Saksa, P., and Stewart, W.: Forests and Water in the Sierra Nevada: Sierra Nevada Watershed Ecosystem Enhancement Project Forests and Water in the Sierra Nevada: Sierra Nevada Watershed Ecosystem Enhancement Project, *Sierra Nevada Research Institute Report, 11.1*, 1–35, 2011.
- 20 Bales, R.C., Goulden, M.L., Hunsaker, C.T., Conklin, M.H., Hartsough, P.C., O'Geen, A.T., Hopmans, J.W. and Safeeq, M.:



- Mechanisms controlling the impact of multi-year drought on mountain hydrology, *Scientific Reports*, 8(1), 690. doi: 10.1038/s41598-017-19007-0, 2018.
- Brekke, L. D., Maurer, E. P., Anderson, J. D., Dettinger, M. D., Townsley, E. S., Harrison, A., and Pruitt, T.: Assessing reservoir operations risk under climate change, *Water Resources Research*, 45(4), W04411. doi: 10.1029/2008WR006941, 5 2009.
- Dettinger, M.: Climate Change, Atmospheric Rivers, and Floods in California - A Multimodel Analysis of Storm Frequency and Magnitude Changes, *Journal of the American Water Resources Association*, 47(3), 514–523. doi: 10.1111/j.1752-1688.2011.00546.x, 2011.
- Fites-Kaufman, J. A., Rundel, P., Stephenson, N., and Weixelman, D. A.: Montane and subalpine vegetation of the Sierra Nevada and Cascade ranges (pp. 456–501), In *Terrestrial Vegetation of California*, 3rd Edition, Barbour, M. (ed.), Berkeley, CA: University of California Press. doi: 10.1525/california/9780520249554.003.0017, 2007.
- Fyfe, J. C., Derksen, C., Mudryk, L., Flato, G. M., Santer, B. D., Swart, N. C., Molotch, N. P., Zhang, X., Wan, H., Arora, V. K., Scinocca, J., and Jiao, Y.: Large near-term projected snowpack loss over the western United States, *Nature Communications*, 8, 14996. doi: 10.1038/ncomms14996, 2017.
- 15 Harpold, A. A., Dettinger, M., and Rajagopal, S.: Defining snow drought and why it matters, *Eos, Transactions American Geophysical Union*, 98. doi: 10.1029/2017EO068775, 2017.
- Keeler-Wolf, T., Moore, P. E., Reyes, E. T., Menke, J. M., Johnson, D. N., and Karavidas, D. L.: Yosemite National Park vegetation classification and mapping project report, *Natural Resource Technical Report NPS/YOSE/NRTR-2012/598*, 2012.
- Kelly, A. E., and Goulden, M. L.: A montane Mediterranean climate supports year-round photosynthesis and high forest biomass, *Tree Physiology*, 36(4), 459–468. doi: 10.1093/treephys/tpv131, 2016.
- 20 Ligare, S. T., Viers, J. H., Null, S. E., Rheinheimer, D. E., and Mount, J. F.: Non-Uniform Changes to Whitewater Recreation in California's Sierra Nevada from Regional Climate Warming, *River Research and Applications*, 28(8), 1299–1311. doi: 10.1002/rra.1522, 2012.
- Link, T., and Marks, D.: Distributed simulation of snowcover mass- and energy-balance in the boreal forest, *Hydrological Processes*, 13(14-15), 2439–2452. doi: AID-HYP866>3.0.CO;2-1, 1999.
- 25



- Lundquist, J. D., Roche, J. W., Forrester, H., Moore, C., Keenan, E., Perry, G., Cristea, N., Lapo, K., McGurk, B., Cayan, D. R. and Dettinger, M. D.: Yosemite Hydroclimate Network: Distributed stream and atmospheric data for the Tuolumne River watershed and surroundings, *Water Resources Research*, 52(9), 7478–7489. doi: 10.1002/2016WR019261, 2016.
- Marks, D., Domingo, J., Susong, D., Link, T., & Garen, D.: A spatially distributed energy balance snowmelt model for application in mountain basins, *Hydrological Processes*, 13(February), 1935–1959. doi: 10.1002/(SICI)1099-1085(199909)13:12<1935::AID-HYP868>3.0.CO;2-C, 1999.
- Matchett, J. R., Lutz, J. A., Tarnay, L. W., Smith, D. G., Becker, K. M. L., and Brooks, M. L.: Impacts of fire management on aboveground tree carbon stocks in Yosemite and Sequoia & Kings Canyon National Parks, Natural Resource Report NPS/SIEN/NRR—2015/910, Fort Collins, Colorado, Retrieved from <http://pubs.er.usgs.gov/publication/70140618>, 2015.
- 10 Miller, J. D., Safford, H. D., Crimmins, M., and Thode, A. E.: Quantitative Evidence for Increasing Forest Fire Severity in the Sierra Nevada and Southern Cascade Mountains, California and Nevada, USA, *Ecosystems*, 12(1), 16–32. doi: 10.1007/s10021-008-9201-9, 2009.
- Miller, N. L., Bashford, K. E., and Strem, E.: POTENTIAL IMPACTS OF CLIMATE CHANGE ON CALIFORNIA HYDROLOGY, *Journal of the American Water Resources Association*, 39(4), 771–784. doi: 10.1111/j.1752-151688.2003.tb04404.x, 2003.
- 15 Mote, P. M., Hamlet, A. F., Clark, M. P., and Lettenmaier, D. P.: Declining Mountain Snowpack in Western North America, *Bulletin of the American Meteorological Society*, 86(1), 39–49. doi: 10.1175/BAMS-86-1-39, 2005.
- PRISM Climate Group: United States Average Annual Precipitation, 1981–2010. Oregon State University, 2012.
- Rice, R., Bales, R. C., Painter, T. H., and Dozier, J.: Snow water equivalent along elevation gradients in the Merced and Tuolumne River basins of the Sierra Nevada, *Water Resources Research*, 47(8). doi: 10.1029/2010WR009278, 2011.
- 20 Roche, J. W., Bales, R. C., Rice, R., and Marks, D. G.: Management Implications of Snowpack Sensitivity to Temperature and Atmospheric Moisture Changes in Yosemite National Park, CA, *Journal of the American Water Resources Association*, 54(3), 724–741. doi: 10.1111/1752-1688.12647, 2018.
- Roos, M.: Possible Climate Change And Its Impact On Water Supply In California, *Proceedings OCEANS*, Seattle, WA, Vol. 1, 247–249. doi: 10.1109/OCEANS.1989.592877, 1989.
- 25



- Sala, O. E., Chapin III, F. S., Armesto, J. J., Berlow, E., Bloomfield, J., Dirzo, R., Huber-Sanwald, E., Huenneke, L. F., Jackson, R. B., Kinzig, A., Leemans, R., Lodge, D. M., Mooney, H. A., Oesterheld, M., Poff, N. L., Sykes, M. T., Walker, B. H., Walker, M., Wall, D. H.: Global Biodiversity Scenarios for the Year 2100, *Science*, 287(5459), 1770–1774. doi: 10.1126/science.287.5459.1770, 2009.
- 5 U.S. Forest Service: Existing Vegetation - CALVEG, ESRI personal geodatabase, Retrieved from <https://www.fs.usda.gov/detail/r5/landmanagement/resourcemanagement/?cid=stelprdb5347192>, 2014.
- Winstral, A., Marks, D., and Gurney, R.: An efficient method for distributing wind speeds over heterogeneous terrain, *Hydrological Processes*, 23(17), 2526–2535. doi: 10.1002/hyp.7141, 2009.
- Yarnell, S. M., Viers, J. H., and Mount, J. F.: Ecology and Management of the Spring Snowmelt Recession, *BioScience*, 10 60(2), 114–127. doi: 10.1525/bio.2010.60.2.6, 2010.
- Young, C. A., Escobar-Arias, M. I., Fernandes, M., Joyce, B., Kiparsky, M., Mount, J. F., Mehta, V. K., Purkey, D., Viers, J. H., Yates, D.: Modeling the Hydrology of Climate Change in California’s Sierra Nevada for Subwatershed Scale Adaptation1, *Journal of the American Water Resources Association*, 45(6), 1409–1423. doi: 10.1111/j.1752-1688.2009.00375.x, 2009.
- 15 Zhao, F., Guo, Q., and Kelly, M.: Allometric equation choice impacts lidar-based forest biomass estimates: A case study from the Sierra National Forest, CA, *Agricultural and Forest Meteorology*, 165, 64–72. doi: 10.1016/j.agrformet.2012.05.019, 2012.

**Table 1. Measurements, operator, and instrumentation at each site.**

| Measurement | Operator / Instruments ¹ | Instrument height (m) |
|------------------------|---|---------------------------------|
| Air temperature | RAWS (various ²) SIO, UCM (in-house-calibrated thermistors) CA-DWR (Vaisala HMP45A/H DUS, Dana Meadow; FTS THS-3, Mariposa Grove) | 5 |
| Relative humidity | RAWS (various ²) SIO, UCM (Sensirion, SHT15DV) CA-DWR (Vaisala HMP45A/H DUS, Dana Meadow; FTS THS-3, Mariposa Grove) | 5 |
| Precipitation | RAWS (Tipping bucket (typical); various ²) MID (Weighing-type, ETI Instrument Systems; tipping bucket, Briceburg) CRN (Geonor TM) NRCS (storage with pressure transducer) DWR (storage with pressure transducer) PGE (Weighing-type, ETI Instrument Systems) HHWP (Geonor TM) | 3 3 3 5 5 3 3 |
| Solar radiation | RAWS (Pyranometer, LICor 441A (typical) ²) CA-DWR (LICor 441A) | 5 |
| Wind speed / direction | RAWS (various ²) CA-DWR (Vaisala 425A Ultrasonic) UCM (3D sonic anemometer) | 5 |
| Snow depth | Judd ultrasonic depth sensor | n/a |
| Soil moisture | Decagon Devices, 5TE | n/a |

¹ Operator abbreviations are: RAWS – Interagency Fire Remote Access Weather Station network managed by the Bureau of Land Management; SIO – Scripps Institution of Oceanography; UCM – University of California Merced; CA-DWR – California Department of Water Resources; MID – Merced Irrigation District; HHWP – Hetch Hetchy Water and Power; NRCS – Natural Resource Conservation Service; PGE – Pacific Gas and Electric; NOAA –

5 National Oceanic and Atmospheric Administration Climate Reference Network.

² See RAWS (various; see <https://famit.nwcg.gov/applications/RAWS>) for a description of instrument types.

**Table 2. Meteorological stations and data used to force model.**

| Station name ¹ | Elev., m | UTM easting ² , m | UTM northing ² , m | Measurements used ³ | Operator ⁴ |
|-------------------------------|----------|------------------------------|-------------------------------|--------------------------------|-----------------------|
| Green Springs (GRN) | 311 | 4193067 | 191966 | t, rh, p , sr, w | RAWS |
| Stanislaus Powerhouse (SPW) | 333 | 4225930 | 204880 | p | PGE |
| Cathey's Valley (CVR) | 366 | 4151342 | 224905 | t, rh, p | RAWS |
| Briceburg (MBB) ⁵ | 670 | 4153062 | 238501 | p | MID |
| Mariposa (MRP) | 680 | 4154996 | 235967 | t, rh, p | RAWS |
| Priest Reservoir (PRR-SIO) | 709 | 4189078 | 212647 | t, rh | SIO |
| Metcalf Gap (MCF) | 938 | 4143892 | 255011 | t, rh , sr, w | RAWS |
| Batterson (BTT) | 943 | 4140575 | 268301 | p | RAWS |
| Dudley Ranch (DUC) | 1114 | 4151264 | 224864 | p | MID |
| Smith Peak (SEW) | 1168 | 4188222 | 226980 | sr, w , p, t, rh | RAWS |
| Smith Peak (SEW-SIO) | 1168 | 4188222 | 226980 | t, rh | SIO |
| Jerseydale (JSD) | 1189 | 4158967 | 249214 | t, rh , sr, w | RAWS |
| Hetch Hetchy (HEM) | 1195 | 4203412 | 255489 | p | HHWP |
| Wawona (WWN) | 1235 | 4158119 | 265654 | t, rh, sr | RAWS |
| Yosemite Valley (YYV) | 1208 | 4181238 | 271843 | p | MID |
| Miami Mountain (MIA) | 1321 | 4144912 | 257059 | t, rh, sr, w | RAWS |
| Sunset Inn (SUN-SIO) | 1371 | 4188288 | 245001 | t, rh | SIO |
| Hodgdon (HDG-SIO) | 1397 | 4187075 | 248304 | t, rh | SIO |
| Mount Elizabeth (MTE) | 1504 | 4217791 | 215134 | t, rh, sr, w | RAWS |
| Yosemite South Entrance (YOW) | 1511 | 4154480 | 267291 | p | MID |
| Forty Mile (FTY-SIO) | 1723 | 4184565 | 247936 | t, rh | SIO |
| Pinecrest (PNW) | 1738 | 4230750 | 236322 | t, rh, sr, w | RAWS |
| Merced Grove (MEG-SIO) | 1810 | 4183446 | 249675 | t, rh | SIO |
| Mariposa Grove (MPG) | 1951 | 4154932 | 269754 | t, rh, w , sr, p | RAWS |
| Crane Flat (CFL-CRN) | 2017 | 4182829 | 251510 | p | NOAA |
| Crane Flat Lookout (CFL) | 2026 | 4182878 | 251530 | t, rh, sr, w , p | RAWS |
| Gin Flat (GIN-SIO) | 2149 | 4183578 | 255577 | t, rh | SIO |
| Gin Flat (GIN) | 2149 | 4183578 | 255577 | t, rh, w, p, sr | CA-DWR |
| Fresno Dome (FRS) | 2177 | 4149346 | 275698 | t, rh, w | UCM |
| Smoky Jack (SMK-SIO) | 2182 | 4188935 | 261192 | t, rh | SIO |
| White Wolf (WHW) | 2408 | 4193540 | 266732 | t, rh, sr, w | RAWS |
| Ostrander Lake (STR) | 2499 | 4168599 | 274999 | t, rh, w | CA-DWR |
| Horse Meadow (HRS) | 2560 | 4226695 | 266766 | t | CA-DWR |
| Olmsted Quarry (OLM-SIO) | 2604 | 4187768 | 279089 | t, rh | SIO |



| Station name ¹ | Elev., m | UTM easting ² , m | UTM northing ² , m | Measurements used ³ | Operator ⁴ |
|--------------------------------|----------|------------------------------|-------------------------------|--------------------------------|-----------------------|
| Tuolumne Meadows (TUM) | 2622 | 4194700 | 293480 | p, t, sr | CA-DWR |
| Virginia Lakes Ridge (VRG) | 2879 | 4215567 | 304085 | p | NRCS |
| Dana Meadow (DAN) | 2988 | 4196683 | 301507 | t, rh, sr, w | CA-DWR |
| Tioga Pass Entry Station (TES) | 3041 | 4198329 | 301461 | t, rh, w | CA-DWR |

¹Station name abbreviations: Three letter abbreviations are derived from conventions in the California Data Exchange Commission database (<http://cdec.water.ca.gov/>). Abbreviations ending with “-SIO” indicate stations operated by Scripps Institution of Oceanography that are not currently available through CDEC. CFL-CRN indicates the NOAA Climate Reference Network Station located near the Crane Flat Lookout.

²Geographic coordinates are in Universal Transverse Mercator (UTM) projection, North American 1983 Datum, Zone 11.

5 ³Variable abbreviations: p, precipitation; rh, relative humidity; sr, solar radiation; t, air temperature; w, wind speed and direction.

⁴Operator abbreviations are: RAWs – Interagency Fire Remote Access Weather Station network managed by the Bureau of Land Management; SIO – Scripps Institution of Oceanography; UCM – University of California Merced; CA-DWR – California Department of Water Resources; MID – Merced Irrigation District; HHWP – Hetch Hetchy Water and Power; NRCS – Natural Resource Conservation Service; PGE – Pacific Gas and Electric; NOAA – National Oceanic and Atmospheric Administration Climate Reference Network.

10 ⁵Actually located in the town of Mariposa, CA.

**Table 3. Snow and soil moisture data sources.**

| Station name ¹ | Elev., m | UTM ² | | Data type ³ |
|---------------------------|----------|------------------------------|------------------------------|---------------------------------------|
| | | northing ² , m | eastings ² , m | |
| Merced Grove (MEG-SIO) | 1810 | 4183446 | 249675 | distributed snow depth, soil moisture |
| Bell Meadow (BEM) | 1981 | 4228435 | 242260 | monthly swe |
| Beehive Meadow (BHV) | 1981 | 4208908 | 255883 | monthly swe |
| Lower Kibbie (LKB) | 2042 | 4213387 | 247407 | monthly swe |
| Lake Vernon (VNN) | 2042 | 4211186 | 261488 | monthly swe |
| Upper Kibbie Ridge (UKR) | 2042 | 4214521 | 246651 | monthly swe |
| Kerrick Ranch (KRC) | 2134 | 4229596 | 240718 | monthly swe |
| Gin Flat (GFL) | 2134 | 4183363 | 255739 | monthly swe |
| | 2134 | 4183578 | 255576 | daily swe |
| Gin Flat (GIN-SIO) | 2134 | 4183350 | 255550 | distributed snow depth, soil moisture |
| Peregoy Meadow (PGM) | 2134 | 4172111 | 268473 | monthly swe |
| Smoky Jack (SMK-SIO) | 2182 | 4188935 | 261192 | distributed snow depth, soil moisture |
| Paradise Meadow (PDS) | 2332 | 4214396 | 265710 | monthly swe |
| | 2332 | 4214326 | 265612 | daily swe |
| Huckleberry Lake (HCL) | 2377 | 4220692 | 259308 | monthly swe |
| Spotted Fawn Lake (SPF) | 2377 | 4219616 | 258135 | monthly swe |
| Sachse Spring (SAS) | 2408 | 4219048 | 251182 | monthly swe |
| White Wolf (WHW) | 2408 | 4193540 | 266732 | daily swe |
| Wilma Lake (WLW) | 2438 | 4218298 | 269071 | monthly swe |
| Tenaya Lake (TNY) | 2484 | 4190665 | 284584 | monthly swe |
| | 2484 | 4190534 | 284349 | daily swe |
| Ostrander Lake (STR) | 2499 | 4168599 | 274999 | monthly swe |
| | 2499 | 4168565 | 274701 | daily swe |
| Horse Meadow (HRS) | 2560 | 4226695 | 266766 | monthly swe |
| | 2560 | 4227164 | 266940 | daily swe |
| Olmsted Quarry (OLM-SIO) | 2604 | 4187768 | 279089 | distributed snow depth, soil moisture |
| Tuolumne Meadow (TUM) | 2621 | 4194327 | 293307 | monthly swe |
| Snow Flat (SNF) | 2652 | 4189558 | 280239 | monthly swe |
| New Grace Meadow (NGM) | 2713 | 4225694 | 270684 | monthly swe |
| Slide Canyon (SLI) | 2797 | 4218724 | 286737 | daily swe |



| Station name ¹ | Elev., m | UTM northing ² , UTM easting ² | | Data type ³ |
|---------------------------|----------|--|--------|------------------------|
| | | m | m | |
| Bond Pass (BNP) | 2835 | 4228817 | 270246 | monthly swe |
| Rafferty Meadow (RFM) | 2865 | 4190277 | 295406 | monthly swe |
| Dana Meadow (DAN) | 2987 | 4196789 | 301552 | monthly swe |
| | 2987 | 4196756 | 301486 | daily swe |

¹See footnote 1 in Table 1.

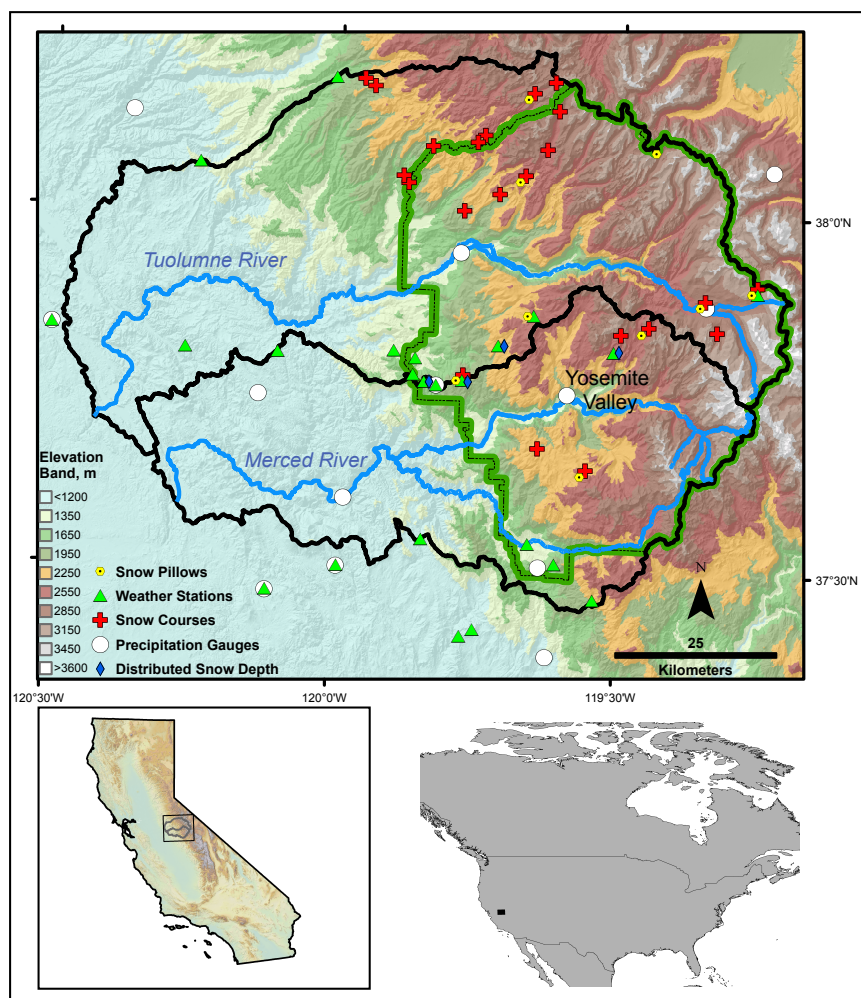
²See footnote 2 in Table 1.

³Data type explanations: monthly swe denotes manually measured snow courses, hourly swe indicates a snow-pillow site, and distributed snow depth indicates sites with 4-6 snow depth sensors distributed across an area of approximately 100 meters square.



Table 4. Canopy parameters (adapted from Link and Marks (1999)).

| Vegetation class | tau (τ) | mu (μ) |
|---|----------------|--------------|
| Herbaceous, sparse shrub, non-vegetated | 1 | 0 |
| Conifer forest/woodland | 0.2 | 0.040 |
| Mixed conifer and hardwood | 0.3 | 0.033 |
| Hardwood forest/woodland | 0.4 | 0.025 |



5 **Figure 1: Hydrometeorological stations in and adjacent to the Merced and Tuolumne watersheds used in this data set. Co-located station types are offset for clarity. Yosemite National Park is demarcated by the green boundary.**

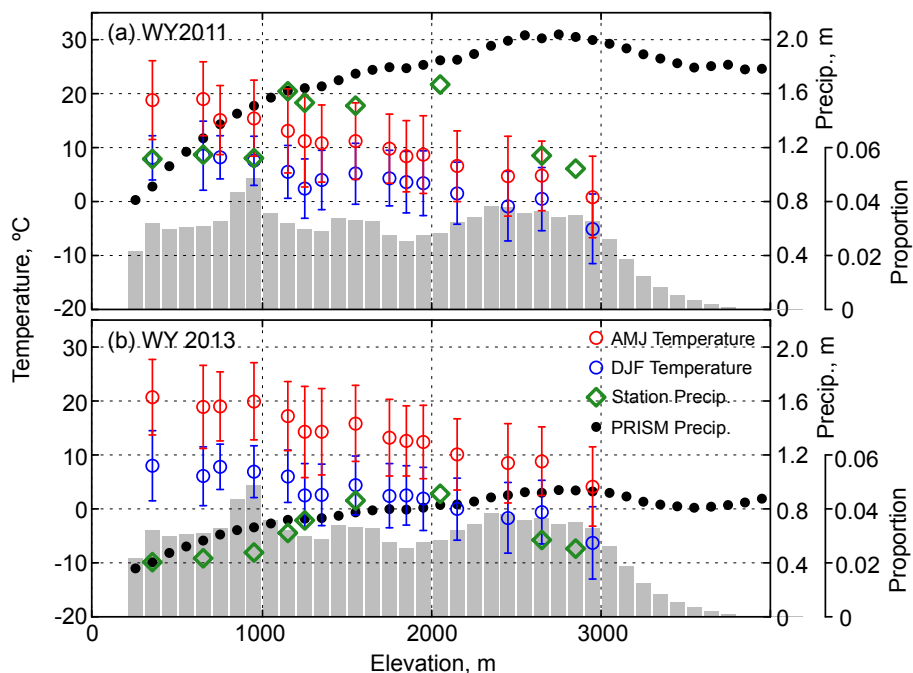
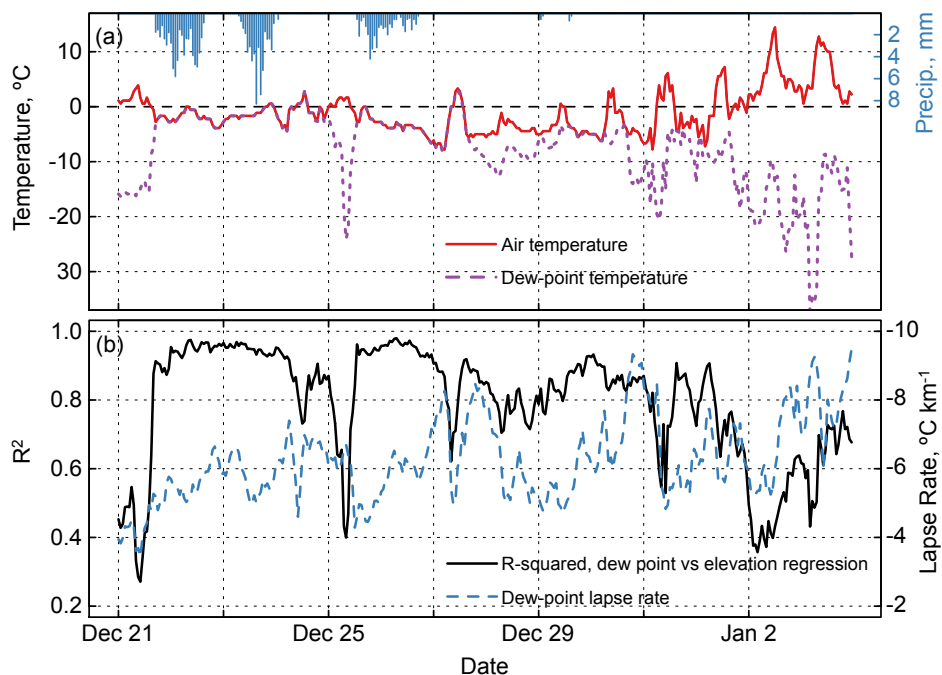


Figure 2: Elevation transects of temperature and precipitation in (a) wet and cold water year 2011, and (b) dry and warm 2013. Temperatures are three-month means and standard deviations during the main snowpack accumulation period (December-February) and the main snowmelt season (April-June). Precipitation and temperature station data were averaged by 100-m elevation band. Shaded area is the proportional basin area in each 100-m elevation band.

5



5 **Figure 3: (a) Hourly time-series of air temperature, dew-point temperature, and precipitation as recorded at Crane Flat Lookout RAWS and Crane Flat CRN stations for a two-week period from December 21, 2012 through January 3, 2013. (b) Dew point lapse rate and corresponding coefficient of determination for the same period.**