



# The Total Carbon Column Observing Network Site Description for Lauder, New Zealand

David F. Pollard<sup>1</sup>, Vanessa Sherlock<sup>1</sup>, John Robinson<sup>1</sup>, Nicholas M. Deutscher<sup>3</sup>, Brian Connor<sup>2</sup>, and Hisako Shiona<sup>1</sup>

<sup>1</sup>National Institute of Water and Atmospheric Research Ltd (NIWA), Lauder, New Zealand

<sup>2</sup>BC Consulting Limited, Martinborough, New Zealand

<sup>3</sup>School of Chemistry, University of Wollongong, Northfields Ave, Wollongong, NSW, 2522, Australia

Correspondence to: David F. Pollard ([dave.pollard@niwa.co.nz](mailto:dave.pollard@niwa.co.nz))

**Abstract.** In this paper we describe the retrievals of atmospheric trace gases from near infrared, high resolution solar absorption spectroscopy measurements at the Lauder atmospheric research station in New Zealand and submitted to the Total Carbon Column Observing Network (TCCON) archive.

The Lauder site (45.034°S, 169.68°E, 370 masl) is located within a sparsely populated region of the South Island of New Zealand, and is sheltered from the prevailing wind direction by the Southern Alps, which gives the site a high number of clear-sky days and an airmass that is largely unmodified by regional anthropogenic sources. The Lauder TCCON archive consists of data from two instruments; a Bruker IFS 120HR from June 2004 to February 2010 and a Bruker IFS 125HR from February 2010 to present. The bias between the two instrument is assessed to be 0.068% for CO<sub>2</sub>. Since measurements using the IFS 125HR began, the standard deviation about the hourly mean has been better than 0.1% for 96.81% of CO<sub>2</sub> column retrievals. The retrievals have been calibrated against *in situ* airborne measurements to correct for biases and provide traceability to the World Meteorological Organisation (WMO) scales with an accuracy of 0.1% for CO<sub>2</sub>.

The Lauder TCCON time series of retrieved dry-air mole fractions of CO<sub>2</sub>, CH<sub>4</sub>, N<sub>2</sub>O, HF, H<sub>2</sub>O, HDO and CO are available from the TCCON data archive.

The DOIs are:

<http://dx.doi.org/10.14291/tcon.ggg2014.lauder01.R0/1149293> for the IFS 120HR data

<http://dx.doi.org/10.14291/tcon.ggg2014.lauder02.R0/1149298> for the IFS 125HR data.

## 1 Introduction

Atmospheric trace gases that absorb infrared radiation have an important influence on the Earth's climate due to the greenhouse effect. Accumulation of some of these species, most notably carbon dioxide (CO<sub>2</sub>) and methane (CH<sub>4</sub>), are causing modification of the climate system. In order to understand the direct and indirect influences this process is having on the climate, it is important to understand the global distribution, sources and sinks of these gases.

One method for measuring the total column abundance of these gases is high resolution solar absorption spectroscopy using



Fourier transform spectrometers (FTS) in the near infrared spectral region. The Total Carbon Column Observing Network (TCCON, Wunch et al. (2011a)) consists of a geographically dispersed network of such instruments designed to provide consistent and precise retrievals of a number of the atmospheric species. For CO<sub>2</sub> column measurements, Rayner and O'Brien (2001) demonstrated that a precision of better than 0.25% is necessary to improve understanding of the carbon cycle while Olsen and  
5 Randerson (2004) showed that a precision of better than 0.1% would allow the strength of the Northern Hemisphere carbon sink to be assessed. The TCCON has adopted these values as measurement precision targets for the network with an expected site-to-site bias of less than 0.2% (Wunch et al., 2015).

In this paper we describe the TCCON site at Lauder, New Zealand (45.034°S, 169.68°E, 370 masl) and the time series of column averaged dry air mole fractions (DMF, denoted by  $X_{gas}$ ) of CO<sub>2</sub>, CH<sub>4</sub>, nitrous oxide (N<sub>2</sub>O), hydrogen fluoride (HF),  
10 water vapour (H<sub>2</sub>O and HDO) and carbon monoxide (CO), which have been retrieved using the 2014 version of the GGG processing software (Wunch et al., 2015) and are archived on the TCCON Data Archive Sherlock et al. (2014b)). This time series spans from 2004 to the present and represents the longest TCCON dataset in the Southern hemisphere.

TCCON data from Lauder have been used extensively to support satellite missions; such as the Greenhouse Gases Observing Satellite (GOSAT, Yokota et al. (2009), Wunch et al. (2011b) and Crisp et al. (2012)) and the Orbiting Carbon Observatory 2  
15 (OCO-2, Crisp et al. (2008)) by providing data for retrieval validation and algorithm development (e.g. Schepers et al. (2016), Dupuy et al. (2016), Connor et al. (2016) and Wunch et al. (2016)); as well as for carbon cycle studies and model validation (e.g. Chevallier et al. (2011) and Deutscher et al. (2014)).

## 2 Site details

20 The Lauder atmospheric research station, operated by New Zealand's National Institute of Water and Atmospheric Research (NIWA), is located in a sparsely populated rural area on the South Island of New Zealand. The station is 2 km north of the settlement of Lauder (population of approximately 50) in a broad valley with mountain ranges on three sides. Prevailing westerly winds have to cross the Southern Alps before reaching the site, and this orographic drying leads to annual rainfall of around 400 mm evenly distributed throughout the year, resulting in a semi-arid climate with a high number of clear-sky days.

25 Land around the site is predominantly used for irrigated livestock grazing, seasonal cropping, or is dry scrub. Farming practices in the area have shifted in recent years from low intensity sheep and cattle grazing to more intensive dairy farming with a corresponding change from flood to spray irrigation. Some upland farming takes place in the region, which sometimes requires austral springtime tussock burn off. Plumes from this biomass burning may affect in-situ measurements at the site on a small number of days each year.

30 In the region, most domestic heating is by wood burning. The nearest major population centre is the township of Alexandra, with a population of approximately 5000, located 40 km south-west of the site. Although air quality in this and other settlements in the region suffers from the inefficient burning of wood, in most cases these plumes are capped by an inversion layer and drain away from the research station, rarely affecting measurements. There are no other major anthropogenic sources of



greenhouse gases or pollutants in the region.

Southern New Zealand is exposed to strong westerly flows that have had little or no interaction with significant land masses, consequently the atmospheric composition observed at the site can be considered representative of the atmospheric background state (Steinkamp et al., 2017).

- 5 As well as being part of TCCON, the Lauder station is a member of the Network for the Detection of Atmospheric Composition Change (NDACC), the Baseline Surface Radiation Network (BSRN), Global Atmosphere Watch (GAW) and the GCOS (Global Climate Observing System) Reference Upper Air Network (GRUAN). Other greenhouse gas measurements made at the site are summarised in Sect. 3.4.

## 10 **3 Instrumentation**

Two Fourier transform spectrometer (FTS) instruments have been used to make TCCON measurements at Lauder (Table 1); the chronology of these instruments and major changes to them are listed in Table 2.

Both instruments are accommodated in a dedicated, air conditioned and temperature stabilised laboratory. Both have dedicated solar trackers, protected by autonomous covers, which close automatically in the event of rain or high winds.

15

### **3.1 Bruker IFS 120HR**

From June 2004, following the installation of an Indium Gallium Arsenide (InGaAs) detector, an existing Bruker 120HR FTS (referred to as lauder01 in the TCCON archive) was used in a time-sharing mode to make routine measurements of solar absorption in the mid-infrared (MIR, for the NDACC) and near-infrared (NIR, for the TCCON). Acquisition of spectra in the two spectral regions (MIR and NIR) requires a beamsplitter exchange, necessitating daily venting and re-evacuation of the instrument (and loss of observation time for the original MIR measurement programme). Data for the period from 20<sup>th</sup> June 2004 to 28<sup>th</sup> February 2010 were submitted to the TCCON archive. From 20<sup>th</sup> June 2004 to 30<sup>th</sup> May 2006, 10 interferograms measured at a scanner velocity of 20 kHz were co-added for each retrieval, after this period retrievals were made from individual interferograms measured at 40 kHz.

- 25 A prototype active tracking system was installed in the IFS 120HR solar tracker telescope in 2006, which adjusted the position of a 45° mirror immediately before the instrument input port based on feedback from quadrant diodes. The in-house developed NIWA360 tracker as used by the IFS 125HR instrument, was not installed for the IFS 120HR until 2011, after the end of the lauder01 dataset.

- 30 After installation of the IFS 125HR instrument (see below) one month of measurements using both instruments have been released to the TCCON archive to allow users to assess any biases between instruments. An assessment of bias between instruments is also made in Sect. 7.1

Measurements in TCCON mode are still made periodically (approximately monthly) with this instrument to provide an inde-



pendent check of the primary TCCON instrument. These data are not released to the TCCON archive.

### 3.2 Bruker IFS 125HR

In 2009 NIWA purchased a Bruker IFS 125HR spectrometer dedicated to TCCON measurements (lauder02 in the TCCON  
5 data archive). This instrument began routine TCCON measurements in February 2010.

Active tracking for this instrument is achieved using the in-house developed NIWA360 system, which directs a small amount  
of the incoming solar radiation through a telescope and onto quadrant photo diodes, which steer the tracker to keep the solar  
image centred on the FTS input aperture to within 10% of the radial extent of the solar disc, an accuracy of better than 0.025°. The NIWA360 system has been used for the IFS 125HR since installation.

10 As with most TCCON sites, this instrument was originally supplied with a faulty ECL03 laser sampling board resulting in spu-  
rious 'ghost' signals, which interfere with the spectral fitting. The electronics board in the Lauder IFS 125HR was upgraded  
to an ECL05 board in January 2011 and the ghost to parent ratio (GPR) has since been monitored regularly and minimised  
whenever necessary. A full discussion on the treatment of this issue is given in Sect. 4.1.

Apart from some early testing between February and October 2010 when some measurements were taken at scanner velocities  
15 of 10 and 40 kHz, the majority of the IFS 125HR time series have been taken at 20 kHz. Following the installation of new  
control electronics in October 2015, measurements were transitioned to 10 kHz at the end of March 2016.

### 3.3 Auxiliary measurements

In order to satisfy the requirements of a TCCON station, and to carry out retrievals, a number of auxiliary measurements of  
20 meteorological parameters are required. A NIWA climate monitoring station is sited at Lauder, approximately 220 m from the  
FTS instruments. This includes measurements of:

- pressure - Vaisala PTB100A  $\pm 0.3$  hPa.
- temperature and humidity - Vaisala HMP155D  $\pm 0.3$  °C,  $\pm 3.5\%$ .
- wind speed and direction - Vector A101M anemometer ( $\pm 0.1$  ms<sup>-1</sup> < 10 ms<sup>-1</sup>,  $\pm 2\%$  rest of range) and Vector W200P vane  
25 ( $\pm 2^\circ$ ).

### 3.4 Other instruments present at the site

The atmospheric research station at Lauder hosts a wide range of atmospheric remote sensing and *in situ* instrumentation. With  
respect to atmospheric greenhouse gas measurements, these include *in situ* FTS measurements of CO<sub>2</sub>, CO, CH<sub>4</sub> and N<sub>2</sub>O  
(Griffith et al., 2012), non-dispersive infrared (NDIR) measurements of CO<sub>2</sub> using a LiCor-7000 instrument and flask samples  
30 for subsequent measurements of CO<sub>2</sub>, CO, CH<sub>4</sub>, N<sub>2</sub>O and stable isotopologues of CO<sub>2</sub>, which are collected between 15:00



and 16:00 NZST when the wind speed is above  $5 \text{ ms}^{-1}$  in order to sample a well mixed boundary layer (Brailsford et al., 2012). The *in situ* measurements at Lauder are described more fully in appendix A of Steinkamp et al. (2017). The site also hosts LIDAR measurements of ozone and aerosols.

## 5 4 Data processing

The TCCON uses a common processing and retrieval system, known as GGG (currently version GGG2014 described by Wunch et al. (2015)), in order to minimise biases across the network. This section will describe the data processing as it applies to the IFS 125HR data. The processing is broadly similar for IFS 120HR except that for the IFS 120HR the Silicon (Si) detector is not used, only forward scan interferograms are recorded and in principle there is no requirement to correct for laser sampling errors because the IFS 120HRs did not contain the defective laser sampling boards.

The IFS 125HR records DC-corrected, dual channel (InGaAs and Si), forward and reverse scan interferograms throughout the day whenever there are clear skies. After each day of measurements, the interferograms are assessed visually by the operator to check for data quality to remove any periods of total cloud contamination. The raw interferograms are then processed by the I2S (interferogram-to-spectrum) software package, which corrects for solar intensity fluctuations (Keppel-Aleks et al., 2007), applies a phase correction (Mertz, 1967) and a laser sampling error (LSE) correction (Sect. 4.1 below) and then computes the spectra using a fast Fourier transform (Bergland, 1969). The causes and mitigation of the LSE are described later in this section.

The resulting spectra are analysed using the GFIT non-linear, least squares fitting algorithm, which uses molecular absorption coefficients, *a priori* estimates of gas mole fraction profiles, profiles of temperature, pressure and humidity and the calculated solar viewing geometry to calculate theoretical absorption spectra. The atm.101 spectral line list (Toon, 2014a) used is based on HITRAN 2012 database (Rothman et al., 2013) with exceptions as described in (Wunch et al., 2011a) and (Wunch et al., 2015). The solar line list used is that of Toon (2014b).

The profiles of temperature, pressure and humidity are interpolated to the site location from the National Centers for Environmental Prediction (NCEP) reanalysis data (Kalnay et al., 1996) for local noon.

*A priori* profiles of all retrieved species are generated using a set of empirical functions that are optimised to fit observations from a number of different *in-situ*, aircraft and balloon, and satellite sources as a function of latitude, longitude and season, as well as taking account of long-term variability. The GGG2014 *a priori* profiles can be generated using a stand-alone Fortran program (Toon and Wunch, 2014).

GFIT then compares the theoretical and measured spectra in a number of independent micro-windows and minimises the RMS difference between them by iteratively scaling the assumed gas profiles and fitting spectroscopic characteristics such as continuum level, tilt and some degree of curvature, and frequency shifts.

In order to reduce the sensitivity of the measurement to variations in surface pressure and atmospheric water vapour, TCCON reports the column averaged dry-air mole fractions (DMFs or  $X_{gas}$ ), calculated by dividing the column of *gas* by the column



of dry-air inferred from the co-retrieved  $O_2$  column multiplied by the assumed dry-air mole fraction of  $O_2$ :

$$X_{gas} = \frac{VC_{gas}}{VC_{O_2}} \cdot 0.2095 \quad (1)$$

This scaling by the retrieved  $O_2$  column also reduces the effect of systematic instrumental biases such as timing or pointing errors.

The DMF of dry-air,  $X_{air}$ , is a special case given by:

$$X_{air} = \frac{VC_{air}}{VC_{O_2}} \cdot 0.2095 - X_{H_2O} \cdot \frac{m_{H_2O}}{m_{air}^{dry}} \quad (2)$$

where  $m_{H_2O}$  and  $m_{air}^{dry}$  are the mean molecular masses of water ( $18.02 \text{ g mol}^{-1}$ ) and dry-air ( $28.964 \text{ g mol}^{-1}$ ), and  $VC_{air}$  is calculated from the surface pressure,  $P_s$ .

$$VC_{air} = \frac{P_s}{\{g\} \cdot \frac{m_{air}^{dry}}{N_a}} \quad (3)$$

Where  $\{g\}$  is the column averaged acceleration due to gravity and  $N_a$  is Avogadro's constant.

In the case of a perfectly accurate measurement, the value of  $X_{air}$  would be unity. Due to spectroscopic limitations the actual value is approximately 0.98 for all TCCON sites and varies by approximately 1% with solar zenith angle. Deviations from the characteristic values for  $X_{air}$  are generally indicative of erroneous behaviour in the measurement and retrieval system such as tracking errors or fitting to an incorrect airmass as described in Sect. 5.2. However, these errors will generally cancel out in the calculation of DMFs of individual gases as the error will be present for both the gas and  $O_2$ .

As detailed elsewhere (Deutscher et al. (2010), Wunch et al. (2011a) and Wunch et al. (2015)) the TCCON  $X_{CO_2}$  data exhibit non-physical symmetric variability with changing airmass. The data presented here have the TCCON standard airmass correction of -0.0068 applied; however, this value is derived from a limited time series of data from three sites only. Calculating the corresponding value from the uncorrected Lauder  $X_{CO_2}$  data yields an airmass correction of  $-0.0095 \pm 0.0021$ ; applying this value to the Lauder  $X_{CO_2}$  time series generates a seasonal cycle amplitude that is  $\pm 0.6 \mu\text{mol mol}^{-1}$  smaller. Users for whom the seasonal variability is critical can circumvent this issue by only selecting  $X_{CO_2}$  values corresponding to a restricted range of SZAs that is consistent throughout the entire year, e.g. only using measurements between  $35^\circ$  and  $55^\circ$  SZA, where the airmass correction is smallest.

A network-wide bias correction based on airborne measurements to provide traceability to WMO trace gas scales as described in Wunch et al. (2010) with updated values from Wunch et al. (2015), listed in the second column of Table 4, is also applied. The Lauder specific calibration campaigns are described in Sect. 6 of this article.



#### 4.1 Laser sampling error correction

The IFS 125HR FTS makes use of a Helium-Neon (HeNe) metrology laser running parallel to the measured solar beam in the interferometer to allow accurate measurement and control of the optical path difference by counting interference fringes. A fault with the original ECL03 laser amplifier board supplied with this instrument meant that the metrology laser was not sampled correctly at the zero crossing point between the peak and trough of the resulting sine wave (Messerschmidt et al., 2010). As a result, some of the spectral information above the Nyquist frequency of  $7899\text{ cm}^{-1}$  was folded below it and *vice versa*, causing features known as ghosts.

During installation the LSE was minimised for a scanner velocity of 40 kHz resulting in a small LSE at a rate of 20 kHz used for the majority of operational measurements.

Following the discovery of this fault, Bruker supplied all TCCON sites with replacement ECL05 laser amplifier boards, which allowed the zero level (i.e. the level at which the electronics identify the zero crossing point) to be adjusted. The rectified electronics board was installed in the Lauder IFS 125HR in January 2011. Since this time, regular (approx. every 3 months) checks have been conducted to check for the presence of ghosts and to minimise them by adjusting the zero level if necessary. This is achieved by taking measurements of a tungsten lamp, placing a band pass filter ( $5500 - 6600\text{ cm}^{-1}$ ) between the interferometer and detector and measuring the signal aliased at  $9800\text{ cm}^{-1}$ . If any signal is detected, the zero level is iteratively adjusted in order to minimise it.

The 2014 release of the GGG processing software I2S algorithm makes use of the spectra recorded using the Si detector, which is wholly contained in the upper half of the alias, to derive the magnitude of the LSE and allow the spectra of both detectors to be re-sampled, removing the ghost signal. This method is described fully in Wunch et al. (2015).

Figure 1 shows the time series of LSE determined by the I2S algorithm over the period of measurements made using the IFS 125HR. Periods of instrument alignment are denoted by the shaded vertical bands whilst other notable instrument changes are indicated by the various vertical lines. The solid vertical line in early 2011 represents the change of laser amplifier board and subsequent improvement in LSE. Also of note is the change in LSE performance with individual metrology lasers, with the performance of the unit installed between April 2012 and January 2015 being poorer and less stable than other devices as indicated by the relative scatter in the derived LSEs.

## 5 Instrument Stability

### 5.1 Instrumental line shape

The performance and alignment of both instruments is monitored through monthly retrievals of the instrumental line shape (ILS) from spectra obtained from a lamp source with a reference hydrogen chloride (HCl) cell, using the LINEFIT 14 software (Hase et al., 2013). The retrieved ILS describes the deviation from a theoretical ideal ILS, which is assumed by the GFIT retrieval code, in terms of the modulation efficiency (ME) and phase error, both of which vary as a function of optical path



difference (OPD) of the interferometer.

Figure 2 shows a time series of the retrieved ME at the maximum OPD of 45 cm, and maximum phase error for both instruments. For the IFS 125HR, the mean of the ME at max. OPD is 0.9995 with a standard deviation of 0.0106 indicating the stability of the instrument optical alignment over time. This value is significantly better than 4% deviation in ME at maximum OPD which Hase et al. (2013) demonstrated was necessary in order to achieve the  $X_{CO_2}$  retrieval accuracy required by the TCCON. The results for the IFS 120HR show more scatter and less stability with a mean of 1.0124 and standard deviation of 0.0256. Regular ILS retrievals from lamp spectra have been carried out since August 2010.

## 5.2 IFS 125HR Timing Errors

Due to the instability of the IFS 125HR instrument's internal clock, there have been a number of occasions when timing errors have been noted in the retrieved data. These are listed in Table 2. The errors have generally occurred when updates to the operating system or experimental set up have prevented the instrument control computer from periodically resetting the time in the instrument's firmware. Such errors cause the retrieval scheme to attempt to fit the spectra to an incorrect air mass due to small differences in the calculated and true solar zenith angle (SZA). At the magnitude at which these errors occurred, the effect on the retrieved  $X_{gas}$  values is negligible as these are scaled by the retrieved column of  $O_2$  in order to remove such instrumental artefacts. However, the values of  $X_{air}$  that are retrieved and used as a diagnostic and quality indicator within TCCON are perturbed, as in this case it is the theoretical column of dry air that is scaled by the retrieved  $O_2$  column. By artificially introducing a timing error into retrievals which are known to have accurate timing, it has been shown that for a timing error of 60 seconds and SZA less than  $85^\circ$ , the perturbation of  $X_{CO_2}$  is less than 0.02%, compared to 1% for  $X_{air}$ . Therefore, for the 2014 TCCON data release, data subject to these errors have been included without any attempt to correct them.

## 5.3 Time series of $X_{air}$

As noted previously, for an ideal retrieval,  $X_{air}$  would be unity but due to spectroscopic limitations there is a TCCON wide bias and SZA dependence. These are, however, stable both temporally and across the network and so  $X_{air}$  is a useful diagnostic of the quality of measurements, with retrievals deviating more than 1% from the nominal value of 0.98 indicating systematic error, e.g. the timing errors mentioned above, or deviations from an ideal ILS.

Figure 3 shows the time series of  $X_{air}$  retrievals from the IFS 125HR instrument that have satisfied the data quality criteria for release to the TCCON archive. It can be seen that most of these values fall within 1% of 0.98 (indicated by the dashed lines); however, there are some periods with values outside of these limits, which have been identified as having timing errors. These periods are highlighted in green and defined in Table 2.

In Fig. 4 we show the hourly mean and standard deviation (upper panel) of  $X_{air}$  values for the entire Lauder TCCON dataset covering both instruments.

There is a discontinuity in the standard deviation of the hourly mean time series corresponding to a change from performing





retrievals using 10 co-added interferograms sampled at a scanner velocity of 20 kHz to single scans at 40 kHz in May 2006. The discontinuity in both the mean and standard deviation that occurs in early 2010 indicates the change from the IFS 120HR to the IFS 125HR and demonstrates the improvement in performance with the newer instrument.

## 5 6 Airborne Calibration

The accuracy of TCCON measurements is limited by the available spectral line parameters to around 2-3%. However, because of the use of a common retrieval system across the network, the resulting bias is consistent for all retrievals and sites.

In order to align TCCON measurements with the accepted WMO gas standard scale a number of *in-situ*, airborne profile measurements have been made at many of the TCCON sites, including Lauder, (Wunch et al., 2010) to derive a network wide scaling factor for a sub-set of retrieved species. In this section we compare the network wide scaling factors with those derived for the two Lauder instruments.

The Lauder site was included in the flight schedule of each of the HIAPER Pole-to-Pole Observations (HIPPO) campaigns (Wofsy, 2011), and in 2015 was the base for an AirCore (Karion et al., 2010) campaign. Details of successful calibration flights are listed in Table 3. Each flight consists of one or more altitude profiles that have been averaged together to give measured profiles of the mole fractions of each target species. In some cases operational requirements meant that these profiles could not be performed directly over Lauder and were instead carried out during the approach into, or climb out of, Christchurch International Airport approximately 285 km to the North East. It is considered that for the target species, the spatial variability is sufficiently small that these profiles can be considered representative of the air-mass at the TCCON site if the boundary layer is discarded. In order to extend the profiles from their lowest level to the surface they are interpolated using mole fractions measured from surface flask samples collected at the time of overflight at Lauder. Above the maximum altitude attained during the flight these profiles have been supplemented using the TCCON *a priori* profiles.

In order to derive DMFs that can be directly compared to the TCCON measurements, the airborne profiles are integrated following the method of Rodgers and Connor (2003), as it was applied by Wunch et al. (2010), weighting by the FTS retrieval averaging kernels to give a smoothed column average DMF  $x_s$ :

$$x_s = x_a + A(x_h - x_a) \quad (4)$$

Where  $x_a$  is the *a priori* column DMF,  $x_h$  is the DMF of the merged aircraft profile and  $A$  is the column averaging kernel. Figure 5 shows the resulting calibration curves for the smoothed airborne DMFs and the mean of the corresponding day's FTS retrievals for the four species compared. Uncertainties in the airborne measurements are assigned as in Wunch et al. (2010), and those for the TCCON measurements are the standard deviation of the day's retrievals. Calibration scaling factors are then calculated assuming a linear relationship, forced through the origin and taking account of the uncertainties in both the smoothed aircraft and TCCON values. The resulting scaling factors for the Lauder instruments and those derived for the entire TCCON



network in Wunch et al. (2010), updated in Wunch et al. (2015), are listed in Table 4. These show good agreement and the accuracy, based on the uncertainty in the fitted linear relationship, following this correction is 0.1% for  $X_{CO_2}$ .

## 7 Results

### 5 7.1 Instrument intercomparison

In order to assess any biases between the two instruments used to collect TCCON data at Lauder, we have compared days where measurements were taken with both instruments between October 2009 and December 2012. Figs. 6 to 8 show in the upper panels the daily mean retrieved values for  $X_{CO_2}$ ,  $X_{CH_4}$  and  $X_{CO}$  respectively. Error bars represent the standard deviation about the daily means. The lower panels show the difference (IFS 120HR - IFS 125HR) between the daily means, and the error bars are the sum in quadrature of the standard deviations about the daily means. Also plotted are the mean of the daily mean differences and the associated standard deviation and standard error. These values are listed as percentages for all compared species in Table 5. For  $X_{CO_2}$  the mean bias is 0.068% with a standard error of 0.015%.

### 7.2 Time series of retrieved species

Here we present a subset of retrieval time series available in the Lauder TCCON data archive. Figs. 9 to 11 show the hourly means of the retrieved  $X_{gas}$ , along with their standard deviation in the upper panels. These figures are made up of data from both of the Lauder instruments with the change-over occurring at 1<sup>st</sup> February 2010.

The time series of  $X_{CO_2}$  values is shown in Fig. 9. Over the length of this time series  $X_{CO_2}$  has been increasing by approximately  $2 \mu\text{mol mol}^{-1} \text{yr}^{-1}$ . There is a seasonal cycle due to summer draw down, but this is smaller than is seen in the northern hemisphere (Deutscher et al., 2014). Since measurements using the IFS 125HR began, the standard deviation about the hourly mean has been better than 0.1% for 96.81% of retrievals and better than 0.25% for 99.96% of retrievals. The precision of the IFS 120HR was poorer with only 14.95% of hourly standard deviations better than 0.1% and 95.93% better than 0.25%. The precision of both instruments compared to the TCCON targets are shown in Table 6.

Figure 10 shows the  $X_{CH_4}$  time series.  $X_{CH_4}$  has a smaller positive trend of approximately  $5.6 \text{ nmol mol}^{-1} \text{yr}^{-1}$  and a seasonal cycle of similar magnitude with a summer minimum due to oxidation by photo-chemically produced OH radicals. The Lauder TCCON  $X_{CH_4}$  time series starts around two years before the end of a period of stable atmospheric  $CH_4$  concentrations which has been observed in a number of different time series (Schaefer et al. (2016) and references therein) and this is also apparent in the data shown here.

The time series of  $X_{CO}$  shown in Fig. 11 has a small, negative trend and a stronger seasonal cycle with a summer minimum due to OH oxidation and a springtime peak attributed to CO transported from Southern hemisphere biomass burning sources (Buchholz et al., 2016).



Figure 12 shows the time series of the remaining retrieved species.

## 8 Data availability

The GGG2014 versions of the processed Lauder TCCON data are available from the TCCON data archive (Sherlock et al. (2014a) and Sherlock et al. (2014b)) the data DOIs are <http://dx.doi.org/10.14291/tccon.ggg2014.lauder01.R0/1149293> for the IFS 120HR data and <http://dx.doi.org/10.14291/tccon.ggg2014.lauder02.R0/1149298> for the IFS 125HR data.

The IFS 120HR data are available from 20<sup>th</sup> June 2004 to 28<sup>th</sup> February 2010, while the IFS 125HR data cover the range 2<sup>nd</sup> February 2010 to the present day with data becoming publicly available 180 days after collection.

## 9 Conclusions

10 The Lauder TCCON data set contains retrievals of  $X_{CO_2}$ ,  $X_{CH_4}$ ,  $X_{N_2O}$ ,  $X_{HF}$ ,  $X_{H_2O}$ ,  $X_{HDO}$  and  $X_{CO}$  from June 2004 to the present date using two FTS instruments. Overlapping measurements were made using both instruments and from these, the bias between them was assessed to be 0.068% for  $X_{CO_2}$ . Regular monitoring of the ILS (monthly, both instruments) and LSE (quarterly, IFS 125HR only) is carried out to ensure the consistent performance of the instruments and the quality of the retrievals, and to achieve the TCCON target precision of 0.1% for  $X_{CO_2}$  as well as consistency with the rest of the network.

15 Airborne calibration campaigns have shown that the scale factors required to align the Lauder retrievals of  $X_{CO_2}$ ,  $X_{CH_4}$ ,  $X_{CO}$  and  $X_{N_2O}$  with WMO scales are consistent with those used across the TCCON.

Timing errors have sporadically affected measurements taken with the IFS 125HR instrument, which have perturbed the retrieved values for  $X_{air}$  by up to 2%. However, due to the scaling by the co-retrieved column of  $O_2$ , the effect on retrievals of other gases has been minimal, less than 0.02% in the case of  $CO_2$  at SZAs less than 85°. In a future data release it is expected  
20 that these timing errors will be retrospectively corrected.

*Author contributions.* BC was the instigator of the Lauder TCCON programme and was the Lauder TCCON principal investigator (PI) until 2008. VS was involved in the early development of the Lauder TCCON project and was the site PI from 2008 to 2014. VS was responsible for the retrieval of the TCCON products from the Lauder spectra. JR is responsible for the operation and alignment of the FTS instruments and developed the NIWA solar trackers. ND analysed the airmass dependence and provided advice on data processing and methods for carrying  
25 out airborne calibrations. HS maintains the GGG processing system (developed by VS) and quality control of the TCCON data products. DP is the current TCCON site PI for Lauder and wrote this manuscript. All authors have read and provided feedback on the manuscript.

*Acknowledgements.* The Lauder TCCON programme is core-funded by NIWA through New Zealand's Ministry of Business, Innovation and Employment with additional support from the National Institute for Environmental Studies, Japan GOSAT project.



Nicholas Deutscher is supported by an Australian Research Council - Discovery Early Career Researcher Award DE140100178.

The authors would like to acknowledge the following: Colm Sweeney, Sonja Wolter, Tim Newberger and Jack Higgs of NOAA in organising the AirCore campaign at Lauder and the logistical support of Richard Querel, Wills Dobson, Jocelyn Turnbull and Joel Wilson during the AirCore flights; Steve Wofsy and Britt Stevens for providing calibrated HIPPO data; Paul Wennberg, Debra Wunch and Coleen Roehl of Caltech and Geoff Toon of JPL for technical and hardware assistance over the years; Dan Smale and Mike Harvey for the useful and informative discussions and advice.



## References

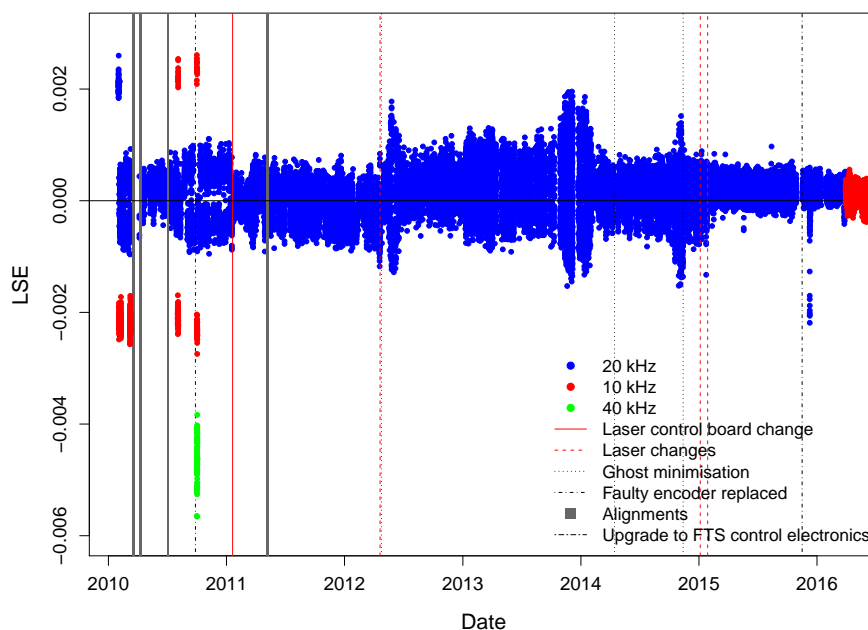
- Bergland, G. D.: A radix-eight fast Fourier transform subroutine for real-valued series, *IEEE Transactions on Audio and Electroacoustics*, 17, 138–144, doi:10.1109/tau.1969.1162043, 1969.
- Brailsford, G. W., Stephens, B. B., Gomez, A. J., Riedel, K., Mikaloff Fletcher, S. E., Nichol, S. E., and Manning, M. R.: Long-term  
5 continuous atmospheric CO<sub>2</sub> measurements at Baring Head, New Zealand, *Atmos. Meas. Tech.*, 5, 3109–3117, doi:10.5194/amt-5-3109-2012, <http://www.atmos-meas-tech.net/5/3109/2012/amt-5-3109-2012.pdf>, 2012.
- Buchholz, R. R., Paton-Walsh, C., Griffith, D. W. T., Kubistin, D., Caldow, C., Fisher, J. A., Deutscher, N. M., Kettlewell, G., Riggenbach, M., Macatangay, R., Krummel, P. B., and Langenfelds, R. L.: Source and meteorological influences on air quality (CO, CH<sub>4</sub> & CO<sub>2</sub>) at a Southern Hemisphere urban site, *Atmospheric Environment*, 126, 274–289, doi:10.1016/j.atmosenv.2015.11.041, 2016.
- 10 Chevallier, F., Deutscher, N. M., Conway, T. J., Ciais, P., Ciattaglia, L., Dohe, S., Fröhlich, M., Gomez-Pelaez, A. J., Griffith, D., Hase, F., Haszpra, L., Krummel, P., Kyrö, E., Labuschagne, C., Langenfelds, R., Machida, T., Maignan, F., Matsueda, H., Morino, I., Notholt, J., Ramonet, M., Sawa, Y., Schmidt, M., Sherlock, V., Steele, P., Strong, K., Sussmann, R., Wennberg, P., Wofsy, S., Worthy, D., Wunch, D., and Zimnoch, M.: Global CO<sub>2</sub> fluxes inferred from surface air-sample measurements and from TCCON retrievals of the CO<sub>2</sub> total column, *Geophysical Research Letters*, 38, doi:10.1029/2011GL049899, <http://dx.doi.org/10.1029/2011GL049899>, 2011.
- 15 Connor, B. J., Sherlock, V., Toon, G., Wunch, D., and Wennberg, P. O.: GFIT2: an experimental algorithm for vertical profile retrieval from near-IR spectra, *Atmos. Meas. Tech.*, 9, 3513–3525, doi:10.5194/amt-9-3513-2016, <http://www.atmos-meas-tech.net/9/3513/2016/amt-9-3513-2016.pdf>, 2016.
- Crisp, D., Miller, C. E., and DeCola, P. L.: NASA Orbiting Carbon Observatory: measuring the column averaged carbon dioxide mole fraction from space, *Journal of Applied Remote Sensing*, 2, doi:10.1117/1.2898457, 2008.
- 20 Crisp, D., Fisher, B. M., O'Dell, C., Frankenberg, C., Basilio, R., Bösch, H., Brown, L. R., Castano, R., Connor, B., Deutscher, N. M., Eldering, A., Griffith, D., Gunson, M., Kuze, A., Mandrake, L., McDuffie, J., Messerschmidt, J., Miller, C. E., Morino, I., Natraj, V., Notholt, J., O'Brien, D. M., Oyafuso, F., Polonsky, I., Robinson, J., Salawitch, R., Sherlock, V., Smyth, M., Suto, H., Taylor, T. E., Thompson, D. R., Wennberg, P. O., Wunch, D., and Yung, Y. L.: The ACOS CO<sub>2</sub> retrieval algorithm; Part II: Global X<sub>CO<sub>2</sub></sub> data characterization, *Atmos. Meas. Tech.*, 5, 687–707, doi:10.5194/amt-5-687-2012, <http://www.atmos-meas-tech.net/5/687/2012/>, 2012.
- 25 Deutscher, N. M., Griffith, D. W. T., Bryant, G. W., Wennberg, P. O., Toon, G. C., Washenfelder, R. A., Keppel-Aleks, G., Wunch, D., Yavin, Y., Allen, N. T., Blavier, J.-F., Jiménez, R., Daube, B. C., Bright, A. V., Matross, D. M., Wofsy, S. C., and Park, S.: Total column CO<sub>2</sub> measurements at Darwin, Australia - site description and calibration against in situ aircraft profiles, *Atmos. Meas. Tech.*, 3, 947–958, doi:10.5194/amt-3-947-2010, <http://www.atmos-meas-tech.net/3/947/2010/>, 2010.
- Deutscher, N. M., Sherlock, V., Mikaloff Fletcher, S. E., Griffith, D. W. T., Notholt, J., Macatangay, R., Connor, B. J., Robinson, J.,  
30 Shiona, H., Velasco, V. A., Wang, Y., Wennberg, P. O., and Wunch, D.: Drivers of column-average CO<sub>2</sub> variability at Southern Hemispheric Total Carbon Column Observing Network sites, *Atmos. Chem. Phys.*, 14, 9883–9901, doi:10.5194/acp-14-9883-2014, <http://www.atmos-chem-phys.net/14/9883/2014/acp-14-9883-2014.pdf>, 2014.
- Dupuy, E., Morino, I., Deutscher, N., Yoshida, Y., Uchino, O., Connor, B., De Mazière, M., Griffith, D., Hase, F., Heikkinen, P., Hillyard, P., Iraci, L., Kawakami, S., Kivi, R., Matsunaga, T., Notholt, J., Petri, C., Podolske, J., Pollard, D., Rettinger, M., Roehl, C., Sherlock, V., Sussmann, R., Toon, G., Velasco, V., Warneke, T., Wennberg, P., Wunch, D., and Yokota, T.: Comparison of XH<sub>2</sub>O Retrieved from  
35 GOSAT Short-Wavelength Infrared Spectra with Observations from the TCCON Network, *Remote Sensing*, 8, 414, <http://www.mdpi.com/2072-4292/8/5/414>, 2016.



- Griffith, D. W. T., Deutscher, N. M., Caldw, C., Kettlewell, G., Riggenbach, M., and Hammer, S.: A Fourier transform infrared trace gas and isotope analyser for atmospheric applications, *Atmos. Meas. Tech.*, 5, 2481–2498, doi:10.5194/amt-5-2481-2012, 2012.
- Hase, F., Drouin, B. J., Roehl, C. M., Toon, G. C., Wennberg, P. O., Wunch, D., Blumenstock, T., Desmet, F., Feist, D. G., Heikkinen, P., De Mazière, M., Rettinger, M., Robinson, J., Schneider, M., Sherlock, V., Sussmann, R., Té, Y., Warneke, T., and Weinzierl, C.: Calibration of sealed HCl cells used for TCCON instrumental line shape monitoring, *Atmos. Meas. Tech.*, 6, 3527–3537, doi:10.5194/amt-6-3527-2013, <http://www.atmos-meas-tech.net/6/3527/2013/>, 2013.
- Kalnay, E., Kanamitsu, M., Kistler, R., Collins, W., Deaven, D., Gandin, L., Iredell, M., Saha, S., White, G., Woollen, J., Zhu, Y., Chelliah, M., Ebisuzaki, W., Higgins, W., Janowiak, J., Mo, K. C., Ropelewski, C., Wang, J., Leetmaa, A., Reynolds, R., Jenne, R., and Joseph, D.: The NCEP/NCAR 40-year reanalysis project, *Bulletin of the American Meteorological Society*, 77, 437–471, doi:10.1175/1520-0477(1996)077<0437:tnyrp>2.0.co;2, 1996.
- Karion, A., Sweeney, C., Tans, P., and Newberger, T.: AirCore: An Innovative Atmospheric Sampling System, *J. Atmos. Oceanic Technol.*, 27, 1839–1853, doi:10.1175/2010JTECHA1448.1, <http://dx.doi.org/10.1175/2010JTECHA1448.1>, 2010.
- Keppel-Aleks, G., Toon, G. C., Wennberg, P. O., and Deutscher, N. M.: Reducing the impact of source brightness fluctuations on spectra obtained by Fourier-transform spectrometry, *Applied Optics*, 46, 4774–4779, doi:10.1364/AO.46.004774, <https://www.osapublishing.org/ao/abstract.cfm?uri=ao-46-21-4774>, 2007.
- Mertz, L.: Auxiliary computation for Fourier spectrometry, *Infrared Physics*, 7, 17–23, doi:10.1016/0020-0891(67)90026-7, 1967.
- Messerschmidt, J., Macatangay, R., Notholt, J., Petri, C., Warneke, T., and Weinzierl, C.: Side by side measurements of CO<sub>2</sub> by ground-based Fourier transform spectrometry (FTS), *TELLUS SERIES B-CHEMICAL AND PHYSICAL METEOROLOGY*, 62, 749–758, doi:10.1111/j.1600-0889.2010.00491.x, 2010.
- Olsen, S. C. and Randerson, J. T.: Differences between surface and column atmospheric CO<sub>2</sub> and implications for carbon cycle research, *Journal of Geophysical Research: Atmospheres*, 109, doi:10.1029/2003JD003968, <http://dx.doi.org/10.1029/2003JD003968>, 2004.
- Rayner, P. J. and O’Brien, D. M.: The utility of remotely sensed CO<sub>2</sub> concentration data in surface source inversions, *Geophysical Research Letters*, 28, 175–178, doi:10.1029/2000GL011912, <http://dx.doi.org/10.1029/2000GL011912>, 2001.
- Rodgers, C. D. and Connor, B. J.: Intercomparison of remote sounding instruments, *Journal of Geophysical Research-Atmospheres*, 108, 4116–4229, doi:10.1029/2002jd002299, 2003.
- Rothman, L. S., Gordon, I. E., Babikov, Y., Barbe, A., Benner, D. C., Bernath, P. F., Birk, M., Bizzocchi, L., Boudon, V., Brown, L. R., Campargue, A., Chance, K., Cohen, E. A., Coudert, L. H., Devi, V. M., Drouin, B. J., Fayt, A., Flaud, J. M., Gamache, R. R., Harrison, J. J., Hartmann, J. M., Hill, C., Hodges, J. T., Jacquemart, D., Jolly, A., Lamouroux, J., Le Roy, R. J., Li, G., Long, D. A., Lyulin, O. M., Mackie, C. J., Massie, S. T., Mikhailenko, S., Muller, H. S. P., Naumenko, O. V., Nikitin, A. V., Orphal, J., Perevalov, V., Perrin, A., Polovtseva, E. R., Richard, C., Smith, M. A. H., Starikova, E., Sung, K., Tashkun, S., Tennyson, J., Toon, G. C., Tyuterev, V. G., and Wagner, G.: The HITRAN2012 molecular spectroscopic database, *Journal of Quantitative Spectroscopy & Radiative Transfer*, 130, 4–50, doi:10.1016/j.jqsrt.2013.07.002, 2013.
- Schaefer, H., Fletcher, S. E. M., Veidt, C., Lassey, K. R., Brailsford, G. W., Bromley, T. M., Dlugokencky, E. J., Michel, S. E., Miller, J. B., Levin, I., Lowe, D. C., Martin, R. J., Vaughn, B. H., and White, J. W. C.: A 21st-century shift from fossil-fuel to biogenic methane emissions indicated by 13CH<sub>4</sub>, *Science*, 352, 80–84, doi:<http://dx.doi.org/10.1126/science.aad2705>, <http://science.sciencemag.org/content/sci/352/6281/80.full.pdf>, 2016.



- Schepers, D., Butz, A., Hu, H., Hasekamp, O. P., Arnold, S. G., Schneider, M., Feist, D. G., Morino, I., Pollard, D., Aben, I., and Landgraf, J.: Methane and carbon dioxide total column retrievals from cloudy GOSAT soundings over the oceans, *Journal of Geophysical Research: Atmospheres*, 121, 5031–5050, doi:10.1002/2015JD023389, 2016.
- 5 Sherlock, V., Connor, B., Robinson, J., Shiona, H., Smale, D., and Pollard, D.: TCCON data from Lauder, New Zealand, 120HR, Release GGG2014R0, <http://dx.doi.org/10.14291/tccon.ggg2014.lauder01.R0/1149293>, doi:10.14291/tccon.ggg2014.lauder01.R0/1149293, TCCON data archive, hosted by the Carbon Dioxide Information Analysis Center, Oak Ridge National Laboratory, Oak Ridge, Tennessee, U.S.A., 2014a.
- 10 Sherlock, V., Connor, B., Robinson, J., Shiona, H., Smale, D., and Pollard, D.: TCCON data from Lauder, New Zealand, 125HR, Release GGG2014R0, <http://dx.doi.org/10.14291/tccon.ggg2014.lauder02.R0/1149298>, doi:10.14291/tccon.ggg2014.lauder02.R0/1149298, TCCON data archive, hosted by the Carbon Dioxide Information Analysis Center, Oak Ridge National Laboratory, Oak Ridge, Tennessee, U.S.A., 2014b.
- Steinkamp, K., Mikaloff Fletcher, S. E., Brailsford, G., Smale, D., Moore, S., Keller, E. D., Baisden, W. T., Mukai, H., and Stephens, B. B.: Atmospheric CO<sub>2</sub> observations and models suggest strong carbon uptake by forests in New Zealand, *Atmos. Chem. Phys.*, 17, 47–76, doi:10.5194/acp-17-47-2017, <http://www.atmos-chem-phys.net/17/47/2017/>, 2017.
- 15 Toon, G. C.: Telluric line list for GGG2014, doi:10.14291/tccon.ggg2014.atm.R0/1221656, <http://dx.doi.org/10.14291/tccon.ggg2014.atm.R0/1221656>, 2014a.
- Toon, G. C.: Solar line list for GGG2014, doi:10.14291/tccon.ggg2014.solar.R0/1221658, <http://dx.doi.org/10.14291/tccon.ggg2014.solar.R0/1221658>, 2014b.
- Toon, G. C. and Wunch, D.: A stand-alone a priori profile generation tool for GGG2014, doi:10.14291/tccon.ggg2014.priors.R0/1221661, <http://dx.doi.org/10.14291/tccon.ggg2014.priors.R0/1221661>, 2014.
- 20 Wofsy, S. C.: HIAPER Pole-to-Pole Observations (HIPPO): fine-grained, global-scale measurements of climatically important atmospheric gases and aerosols, *Philosophical Transactions Of The Royal Society A-Mathematical Physical And Engineering Sciences*, 369, 2073–2086, doi:10.1098/rsta.2010.0313, 2011.
- Wunch, D., Toon, G. C., Wennberg, P. O., Wofsy, S. C., Stephens, B. B., Fischer, M. L., Uchino, O., Abshire, J. B., Bernath, P., Biraud, S. C., Blavier, J.-F. L., Boone, C., Bowman, K. P., Browell, E. V., Campos, T., Connor, B. J., Daube, B. C., Deutscher, N. M., Diao, M., Elkins, J. W., Gerbig, C., Gottlieb, E., Griffith, D. W. T., Hurst, D. F., Jiménez, R., Keppel-Aleks, G., Kort, E. A., Macatangay, R., Machida, T., Matsueda, H., Moore, F., Morino, I., Park, S., Robinson, J., Roehl, C. M., Sawa, Y., Sherlock, V., Sweeney, C., Tanaka, T., and Zondlo, M. A.: Calibration of the Total Carbon Column Observing Network using aircraft profile data, *Atmospheric Measurement Techniques*, 3, 1351–1362, doi:10.5194/amt-3-1351-2010, <http://www.atmos-meas-tech.net/3/1351/2010/>, 2010.
- 30 Wunch, D., Toon, G. C., Blavier, J. F. L., Washenfelder, R. A., Notholt, J., Connor, B. J., Griffith, D. W. T., Sherlock, V., and Wennberg, P. O.: The Total Carbon Column Observing Network, *Philosophical Transactions of the Royal Society A-mathematical Physical and Engineering Sciences*, 369, 2087–2112, doi:10.1098/rsta.2010.0240, 2011a.
- Wunch, D., Wennberg, P. O., Toon, G. C., Connor, B. J., Fisher, B., Osterman, G. B., Frankenberg, C., Mandrake, L., O’Dell, C., Ahonen, P., Biraud, S. C., Castano, R., Cressie, N., Crisp, D., Deutscher, N. M., Eldering, A., Fisher, M. L., Griffith, D. W. T., Gunson, M., Heikkinen, P., Keppel-Aleks, G., Kyrö, E., Lindenmaier, R., Macatangay, R., Mendonca, J., Messerschmidt, J., Miller, C. E., Morino, I., Notholt, J., Oyafuso, F. A., Rettinger, M., Robinson, J., Roehl, C. M., Salawitch, R. J., Sherlock, V., Strong, K., Sussmann, R., Tanaka, T., Thompson, D. R., Uchino, O., Warneke, T., and Wofsy, S. C.: A method for evaluating bias in global measurements of CO<sub>2</sub> total columns from space, *Atmos. Chem. Phys.*, 11, 12317–12337, doi:10.5194/acp-11-12317-2011, <http://www.atmos-chem-phys.net/11/12317/2011/>, 2011b.

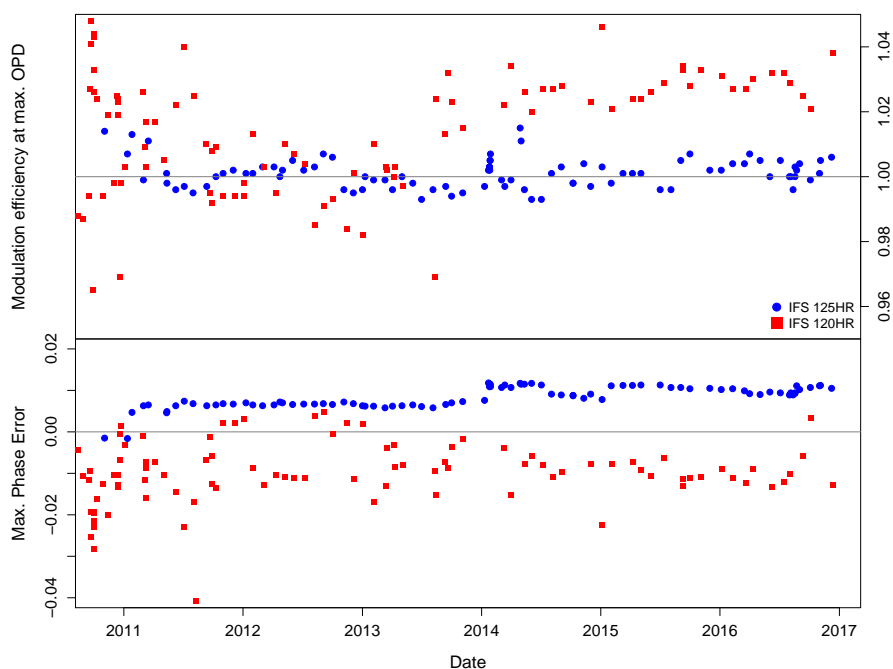


**Figure 1.** Time series of LSE calculated by the I2S algorithm for the IFS 125HR spectra. For 20 kHz data only every 10th data point is plotted for clarity. Vertical lines show significant changes or adjustments to the instrument.

Wunch, D., Toon, G., Sherlock, V., Deutscher, N. M., Liu, C., Feist, D. G., and Wennberg, P. O.: The Total Carbon Column Observing Network's GGG2014 Data Version, doi:doi:10.14291/tcon.ggg2014.documentation.R0/1221662, 2015.

- Wunch, D., Wennberg, P. O., Osterman, G., Fisher, B., Naylor, B., Roehl, C. M., O'Dell, C., Mandrake, L., Viatte, C., Griffith, D. W., Deutscher, N. M., Velazco, V. A., Notholt, J., Warneke, T., Petri, C., De Maziere, M., Sha, M. K., Sussmann, R., Rettinger, M., Pollard, D., Robinson, J., Morino, I., Uchino, O., Hase, F., Blumenstock, T., Kiel, M., Feist, D. G., Arnold, S. G., Strong, K., Mendonca, J., Kivi, R., Heikkinen, P., Iraci, L., Podolske, J., Hillyard, P. W., Kawakami, S., Dubey, M. K., Parker, H. A., Sepulveda, E., Rodriguez, O. E. G., Te, Y., Jeseck, P., Gunson, M. R., Crisp, D., and Eldering, A.: Comparisons of the Orbiting Carbon Observatory-2 (OCO-2) XCO<sub>2</sub> measurements with TCCON, *Atmos. Meas. Tech. Discuss.*, 2016, 1–45, doi:10.5194/amt-2016-227, <http://www.atmos-meas-tech-discuss.net/amt-2016-227/amt-2016-227.pdf>, 2016.
- 10 Yokota, T., Yoshida, Y., Eguchi, N., Ota, Y., Tanaka, T., Watanabe, H., and Maksyutov, S.: Global Concentrations of CO<sub>2</sub> and CH<sub>4</sub> Retrieved from GOSAT: First Preliminary Results, *Sola*, 5, 160–163, doi:10.2151/sola.2009-041, 2009.

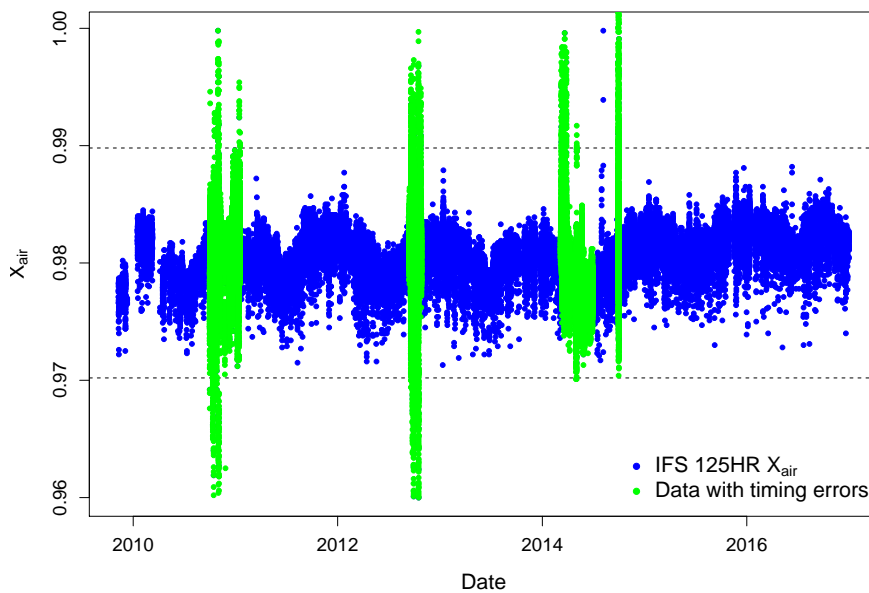




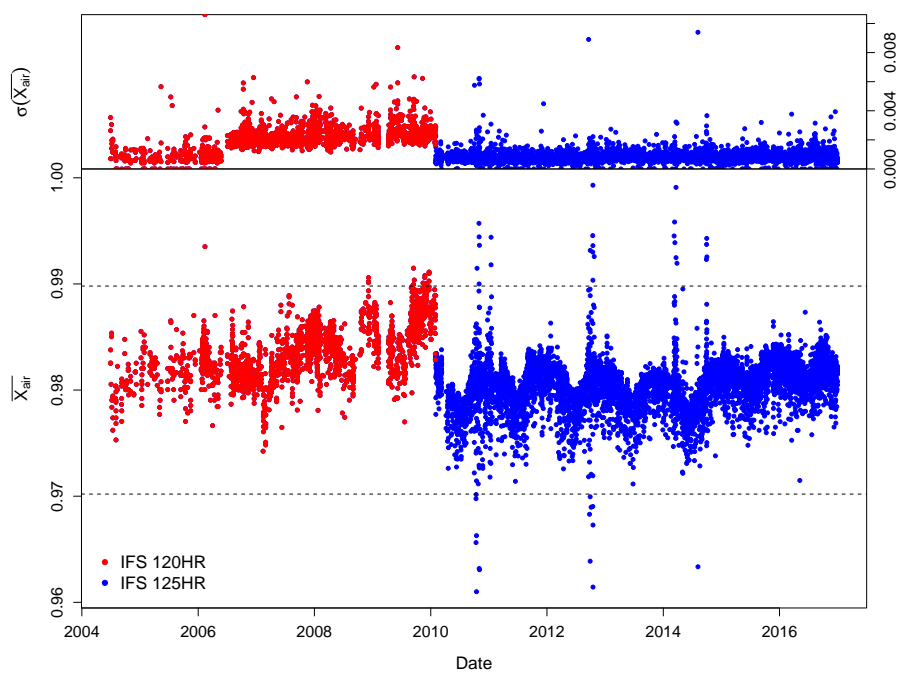
**Figure 2.** The time series of retrieved modulation efficiencies at 45 cm optical path difference (upper panel) and maximum phase error (lower) for the Bruker IFS120HR and IFS125HR instruments at Lauder, based on lamp measurements of a 10 cm HCl cell, indicating the improved stability of the IFS125HR instrument line-shape over time.

**Table 1.** Instrument information.

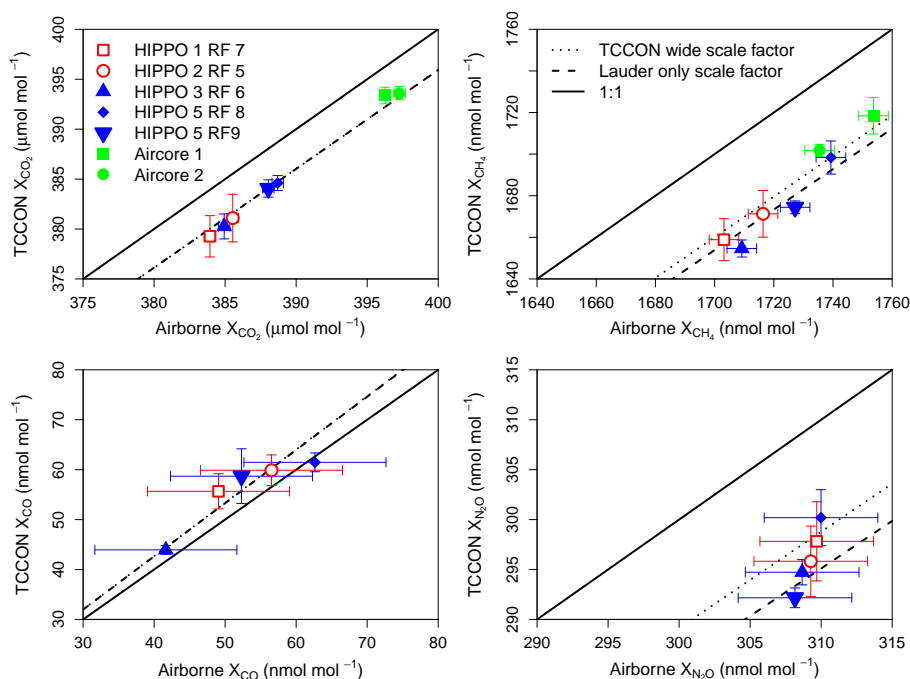
Date	Instrument	Detectors	Spectral Range	LSE Cor- rection Method	Data Process- ing Version	TCCON archive name
20/06/2004 - 28/02/2011	120HR	Extended InGaAs	3900-9000 $\text{cm}^{-1}$	None	GGG2014R01	lauder01
02/02/2010 - Present	125HR	Extended InGaAs + Si	3900-15000 $\text{cm}^{-1}$	Si-based	GGG2014R01	lauder02



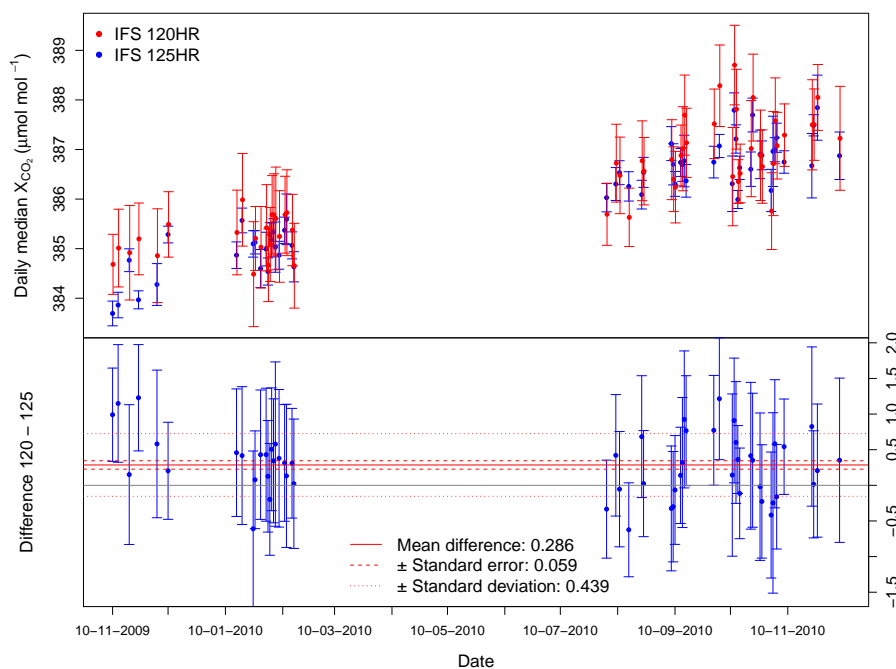
**Figure 3.** Time series of IFS 125HR  $X_{air}$ . Data affected by timing errors are shown in green and defined in Table 2. For values not affected by timing errors, only every 10th data point is plotted for clarity.



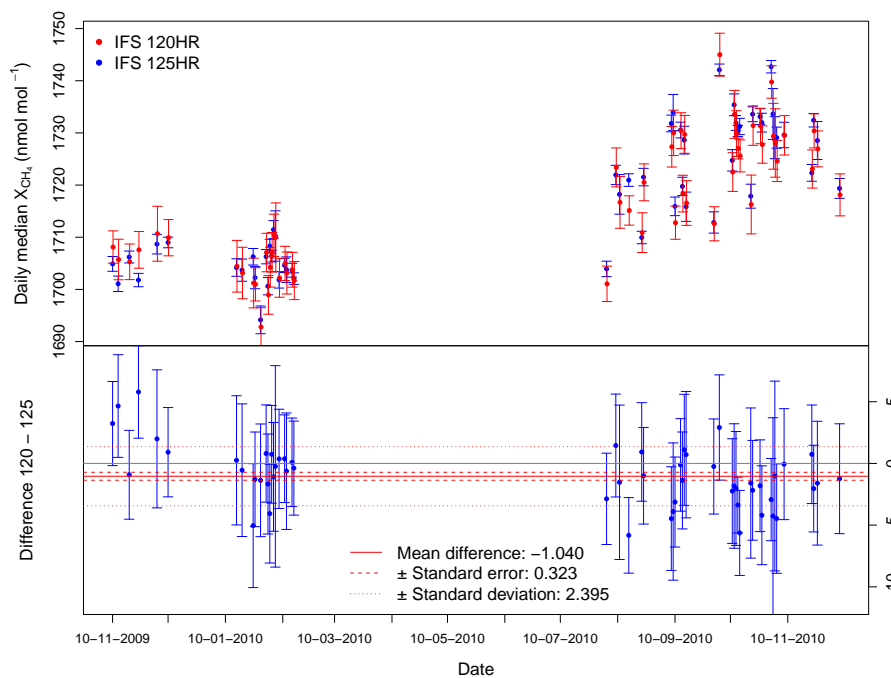
**Figure 4.** Time series of hourly means of  $X_{air}$  (lower panel) and standard deviations about them (upper panel) retrieved from measurements made with both FTS instruments at Lauder.



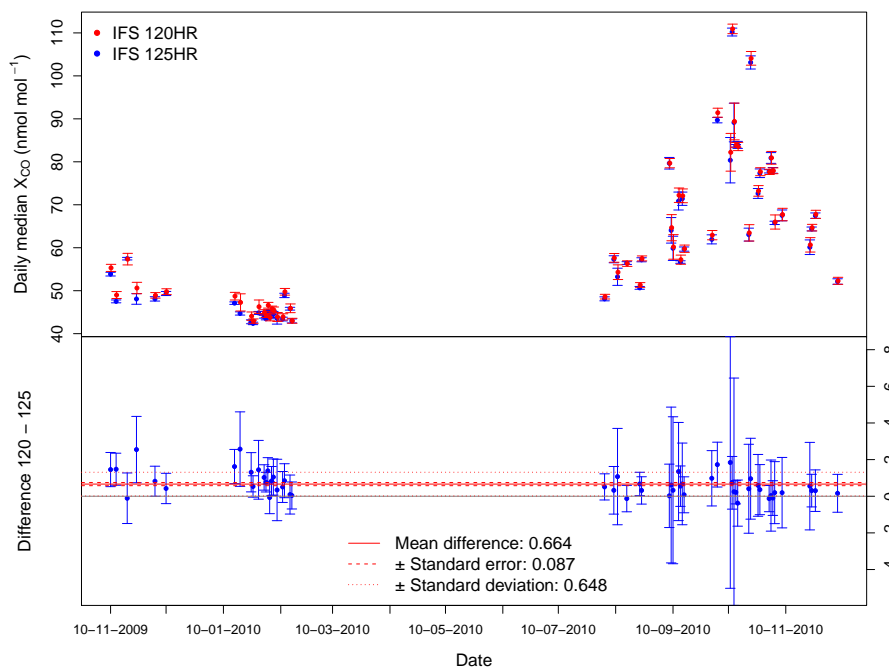
**Figure 5.** Airborne calibration curves for  $X_{CO_2}$ ,  $X_{CH_4}$ ,  $X_{CO}$  and  $X_{N_2O}$  with fitted linear relationships derived for the TCCON network and Lauder only intercomparisons (forced through origin). The HIPPO 1 and 2 flights were compared to the IFS 120HR (open symbols), all others to the IFS 125HR (filled symbols).



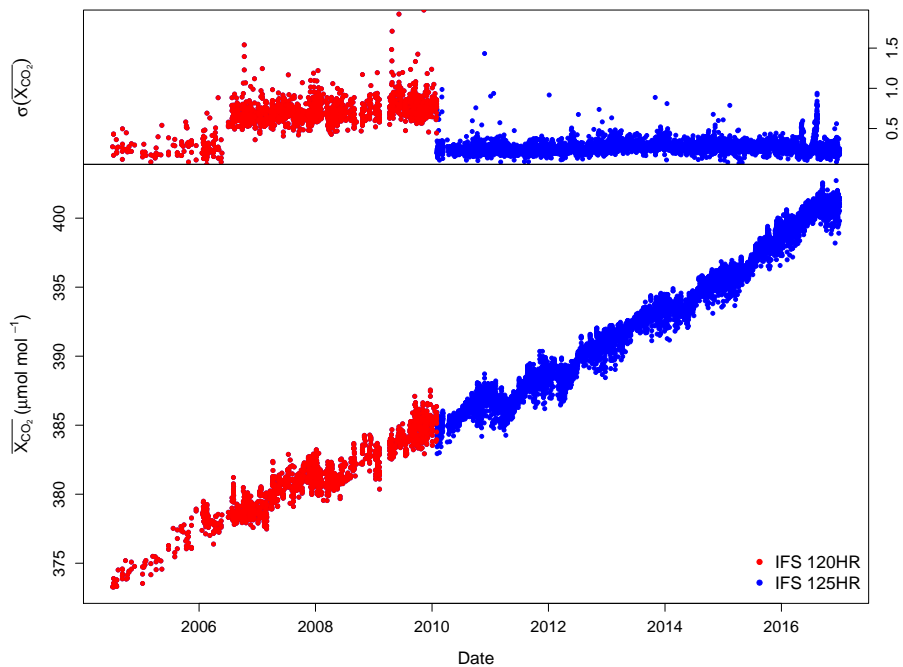
**Figure 6.** Time series of daily means of retrieved  $X_{CO_2}$  from measurements made with both FTS instruments at Lauder (upper panel) and the difference between them (lower panel). Error bars in the upper panel indicate the standard deviation about the daily mean, while those in the lower panel are the sum in quadrature of the standard deviation about the daily means. The horizontal lines in the lower panel show the mean of the daily mean differences and the standard deviation and standard error about it.



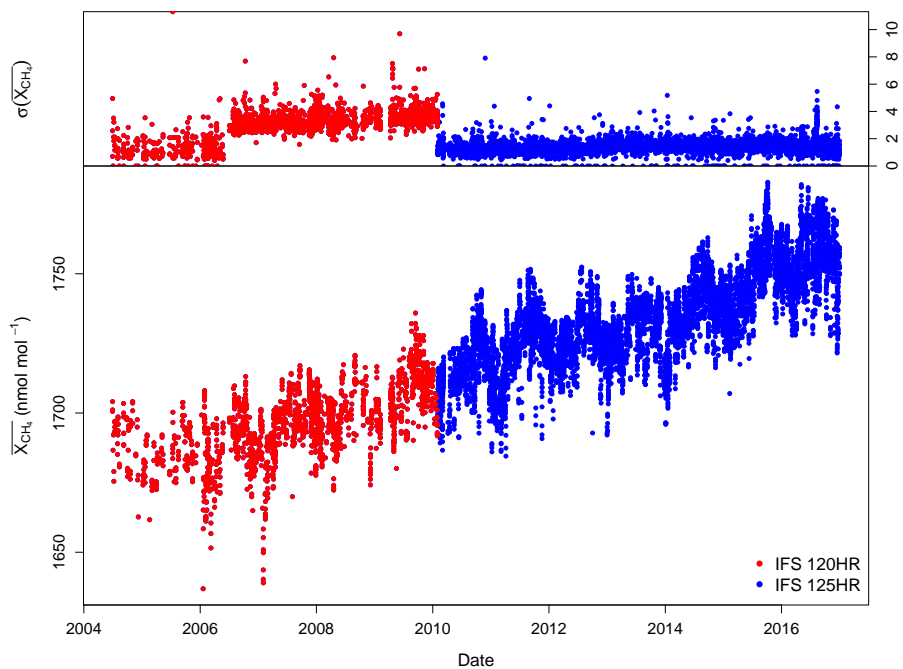
**Figure 7.** As Fig. 6 but for  $X_{CH_4}$ .



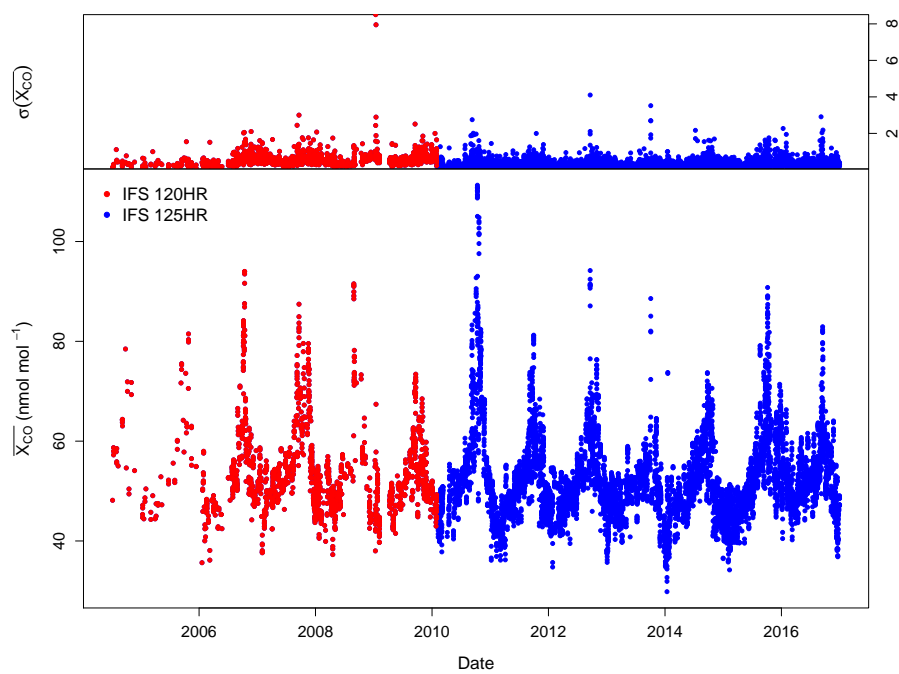
**Figure 8.** As Fig. 6 but for  $X_{CO}$ .



**Figure 9.** Time series of hourly means of  $X_{CO_2}$  retrieved from measurements made with both FTS instruments at Lauder.

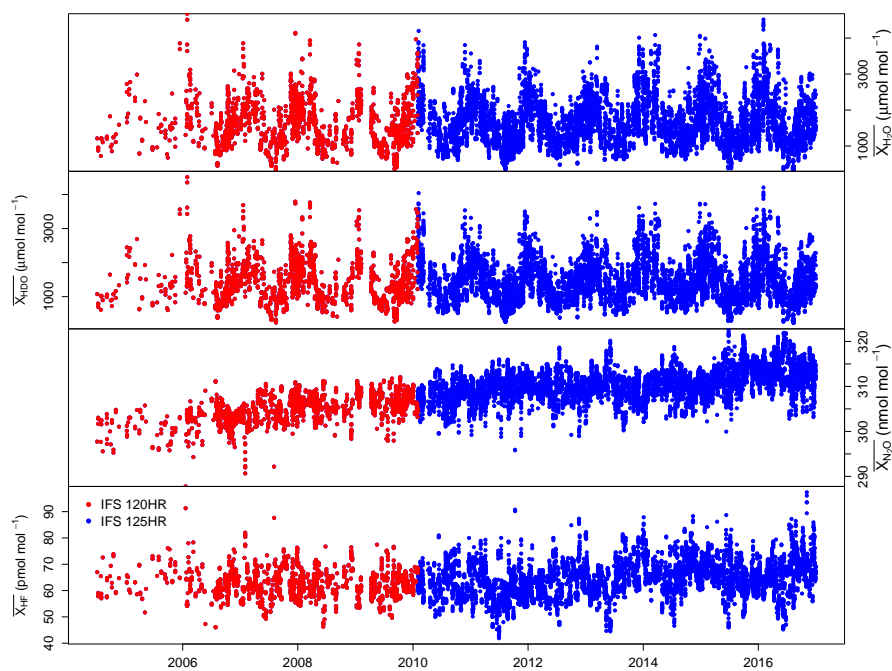


**Figure 10.** Time series of hourly means of  $X_{CH_4}$  retrieved from measurements made with both FTS instruments at Lauder.



**Figure 11.** Time series of hourly means of  $X_{CO}$  retrieved from measurements made with both FTS instruments at Lauder.





**Figure 12.** Time series of hourly means of  $X_{H_2O}$  (top panel),  $X_{HDO}$  (second panel),  $X_{N_2O}$  (third panel) and  $X_{HF}$  (bottom panel) retrieved from measurements made with both FTS instruments at Lauder.

**Table 2.** Major events.

Date	Instrument	Details	Impact
30/03/2004	120HR	First NIR Measurements	
20/06/2004	120HR	Start of TCCON archived data	
30/05/2006	120HR	Change to using single scans instead of co-added interferograms and from 20 to 40 kHz scan rate.	
01/04/2009	120HR	Laser change	
01/08/2009	125HR	Instrument installed	
02/02/2010	125HR	Start of TCCON archived data	
28/02/2010	120HR	End of TCCON archived data	
17-25/03/2010	125HR	Shear alignment	
7-14/04/2010	125HR	IR beam steer alignment	
1-7/07/2010	125HR	Alignment using Hase and Blumenstock method	
5/10/2010 - 20/01/2011	125HR	Timing errors	$X_{air}$ uncertainty increased
20/01/2011	125HR	Laser sampling board replaced	
18/03/2011	125HR	New CaF <sub>2</sub> beamsplitter installed	
4-11/05/2011	125HR	Alignment optimised	
20/04/2012	125HR	Laser replaced	Ghosts minimised 24/04/2012
12/09/2012 - 24/10/2012	125HR	Timing errors	$X_{air}$ uncertainty increased
21 & 24/10/2013	125HR	Measurements affected by smoke from Australian bushfires.	Data excluded from archive
12/09/2012 - 24/10/2012	125HR	Timing errors	$X_{air}$ uncertainty increased
09/03/2014 - 30/06/2014	125HR	Timing errors	$X_{air}$ uncertainty increased
28/09/2014 - 01/10/2014	125HR	Timing errors	$X_{air}$ uncertainty increased
05/01/2015	125HR	Laser replaced	Ghosts minimised
28/01/2015	125HR	Laser replaced	Ghosts minimised
20/10/2015 - 16/11/2015	125HR	Control electronics upgrade and various firmware updates	Some data lost
30/03/2016	125HR	Switch from scan rate of 20 kHz to 10 kHz	

**Table 3.** Airborne calibration flights at the Lauder TCCON site

Campaign	Flight	Date	Alt. range	TCCON instrument	Species compared
HIPPO 1	RF 7	21/01/2009	0.7 - 14.6 km	120HR	CO <sub>2</sub> , CH <sub>4</sub> , CO and N <sub>2</sub> O
HIPPO 2	RF 5	10/11/2009	0.8 - 13.1 km	120HR	CO <sub>2</sub> , CH <sub>4</sub> , CO and N <sub>2</sub> O
HIPPO 3	RF 6	06/04/2010	0.6 - 12.9 km	125HR	CO <sub>2</sub> , CH <sub>4</sub> , CO and N <sub>2</sub> O
HIPPO 5	RF 8	28/08/2011	2.7 - 13.7 km	125HR	CO <sub>2</sub> , CH <sub>4</sub> , CO and N <sub>2</sub> O
HIPPO 5	RF 9	30/08/2011	2.8 - 14.1 km	125HR	CO <sub>2</sub> , CH <sub>4</sub> , CO and N <sub>2</sub> O
Aircore	1	09/09/2015	0.7 - 16.0 km	125HR	CO <sub>2</sub> and CH <sub>4</sub>
Aircore	2	11/09/2015	1.2 - 21.0 km	125HR	CO <sub>2</sub> and CH <sub>4</sub>

**Table 4.** Comparison of Airborne calibration scale factors, derived from Lauder flights, with TCCON network wide values.

Species	TCCON Scale Factor	120HR	125HR
X <sub>CO<sub>2</sub></sub>	0.9898 ±0.0010	0.9880 ±0.0041	0.9911 ±0.0014
X <sub>CH<sub>4</sub></sub>	0.9765 ±0.0020	0.9879 ±0.0052	0.9867 ±0.0016
X <sub>CO</sub>	1.0672 ±0.0200	1.0124 ±0.1419	0.9655 ±0.1116
X <sub>N<sub>2</sub>O</sub>	0.9638 ±0.0100	0.9833 ±0.0130	0.9809 ±0.0081

**Table 5.** Comparison of retrievals from both instruments. Mean difference (IFS 120HR minus IFS 125HR) of daily mean values, their standard deviation and standard error expressed as a percentage and the number of daily means compared.

Species	Mean difference %	SD	SE	N
$X_{CO_2}$	0.068	0.113	0.015	55
$X_{CH_4}$	-0.069	0.141	0.019	55
$X_{CO}$	1.143	1.498	0.202	55
$X_{N_2O}$	-0.005	0.237	0.032	55
$X_{H_2O}$	0.684	1.555	0.210	55
$X_{HDO}$	0.666	1.917	0.258	55
$X_{HF}$	-0.867	0.784	0.106	55

**Table 6.** Precision of Lauder  $X_{CO_2}$  datasets compared to TCCON targets

Instrument	IFS 120HR	IFS 125HR
Mean standard deviation about hourly means	0.17%	0.07%
% < 0.25%	95.93	99.96
% < 0.1%	14.95	96.81