



Upscaled diurnal cycles of land-atmosphere fluxes: a new global half-hourly data product

Paul Bodesheim¹, Martin Jung¹, Fabian Gans¹, Miguel D. Mahecha^{1,2,3}, and Markus Reichstein^{1,2,3}

¹Max Planck Institute for Biogeochemistry, Jena, Germany

²German Centre for Integrative Biodiversity Research (iDiv) Halle-Jena-Leipzig, Leipzig, Germany

³Michael Stifel Center Jena (MSCJ) for Data-Driven & Simulation Science, Jena, Germany

Correspondence to: Paul Bodesheim (pbodes@bgc-jena.mpg.de)

Abstract. Interactions between the biosphere and the atmosphere can be well characterized by fluxes between the two. In particular, carbon and energy fluxes play a major role for understanding biogeochemical processes on ecosystem level or global scale. However, the fluxes can only be measured at individual sites, e.g., by eddy covariance towers, and an upscaling of these local observations is required to analyze global patterns. Previous work focused on upscaling monthly, eight-day, or daily average values and global maps for each flux have been provided accordingly. In this paper, we raise the upscaling of carbon and energy fluxes between land and atmosphere to the next level by increasing the temporal resolution to subdaily scales. We provide continuous half-hourly fluxes for the period from 2001 to 2014 at 0.5° spatial resolution, which allows for analyzing diurnal cycles globally. The dataset contains four fluxes: gross primary production (GPP), net ecosystem exchange (NEE), latent heat (LE), and sensible heat (H). We propose two prediction approaches for the diurnal cycles based on large-scale regression models and compare them in extensive cross-validation experiments using different sets of predictor variables. We analyze the results for a set of FLUXNET tower sites showing the suitability of our approaches for this upscaling task. Finally, we have selected one approach to calculate the global half-hourly data products based on predictor variables from remote sensing and meteorology at daily resolution as well as half-hourly potential radiation. In addition, we provide a derived product that only contains monthly average diurnal cycles, which is a lightweight version in terms of data storage that still enables to study the important characteristics of diurnal courses globally. We recommend to primarily use these monthly average diurnal cycles, because they are less affected by the impacts of day-to-day variation, observation noise, and short-term fluctuations on subdaily scales compared to the plain half-hourly flux products. The global half-hourly data products are available at <https://doi.org/10.17871/BACI.224>.

1 Introduction

Understanding the coupling of the atmosphere and the biosphere is key to understand Earth system dynamics and ultimately to predict future trajectories based on dynamic and fully coupled Earth system models (Bonan, 2008). Eddy covariance measurements of energy and carbon fluxes have revealed major insights into land-atmosphere interactions (see the overview by Balldocchi, 2014), but the underlying observations are local by nature and it remains difficult to derive global inferences. To overcome this limitation, continental to global scale products of biosphere-atmosphere fluxes have been produced using ma-



chine learning techniques that combine flux tower measurements, observations from remote sensing, and climate data (Jung et al., 2009; Papale et al., 2015). These products proved to be useful for example in terms of assessing large-scale patterns of biosphere-atmosphere fluxes with climate data (Jung et al., 2010) or to provide cross-consistency checks for process-model simulations (Bonan et al., 2011). The general principle of this upscaling approach has been to exploit relationships between climate or satellite-based driver variables like temperature or leaf area index, and the targeted biosphere-atmosphere flux (Xiao et al., 2012). In the first (“training”) step, a machine learning model of the flux data is established based on the driver variables across a regional or global network of towers. In the second (“production”¹) step, the model is being applied to large spatial domains where only gridded estimates of the drivers are available. Machine learning techniques are very effective here since they are fully data-adaptive, do not require making assumptions on functional relationships, and can cope with nonlinear dependencies.

One of the first papers by Jung et al. (2009) deals with empirical upscaling of monthly average values of Gross Primary Production (GPP) obtained from a biosphere model. They propose using a model tree ensemble approach to perform the predictions and introduce both a new model tree induction algorithm and a specific ensemble approach. Later, Beer et al. (2010) estimated GPP for different biomes, focussing on global median annual GPP derived using different prediction approaches. Covering a larger number of variables, Jung et al. (2011) produced global flux products at 0.5° spatial resolution for monthly average values of GPP, terrestrial ecosystem respiration (TER), net ecosystem exchange (NEE), latent heat (LE), and sensible heat (H). Their findings were confirmed by a comprehensive cross-validation analysis using FLUXNET² towers. In the latest study of Jung et al. (2017), they investigate the dependencies of changes in temperature and water availability on the interannual variability of carbon fluxes both locally and globally using their upscaled data products and process-based global land models.

There exist further upscaling approaches in the literature based on support vector regression models (Yang et al., 2007; Ueyama et al., 2013; Ichii et al., 2017) that estimate carbon fluxes on regional to continental scale. The work of Xiao et al. (2008, 2010) deals with estimating carbon fluxes for the United States using data from MODIS and AmeriFlux. Only recently, a systematic comparison of different regression algorithms for predicting carbon and energy fluxes has been carried out by Tramontana et al. (2016). The authors of this paper were interested in the best prediction performances for estimating GPP, TER, NEE, LE, H, as well as net radiation at either eight-day or daily temporal resolution. In their cross-validation analysis, they found that prediction performance varies only slightly among different regression algorithms from machine learning. However, they could show that accuracies clearly differ between the individual fluxes, meaning that some fluxes are harder to estimate than others, which is probably due to a lack of information in the set of explanatory variables. The very recent work of Zhang et al. (2017) presents a global product of GPP at eight-day temporal and 500 m spatial resolution, which is based on an improved light use efficiency theory and driven by MODIS satellite data as well as NCEP climate reanalysis data.

Today, global flux products feature at best a daily temporal resolution as presented by Tramontana et al. (2016). This is partly due to rapidly growing computational issues in the training and production step scaling quadratically with spatial resolution.

¹Note that an alternative notion would be to use the term “prediction” here. However, in the climate community “prediction” is typically used for future scenarios, while in machine learning the application domain could be also at ungauged spatial locations etc.

²<http://fluxnet.fluxdata.org/>



In addition, consistent global long-term products of driver data with hourly or higher temporal resolutions are lacking or are not readily available. Upscaling half-hourly carbon and energy fluxes rises previous upscaling approaches to the next level by increasing the temporal resolution to subdaily scales.

In addition, there is a need for a global data product of half-hourly fluxes. Such a data product would allow for characterizing subdaily variations in the diurnal cycles at places where no towers are currently installed. Characterizing typical subdaily flux patterns is critically needed for certain satellite remote sensing applications. For example, the interpretation of satellite retrievals of sun-induced fluorescence as proxy for photosynthesis (Guanter et al., 2014; Sun et al., 2015) or integrated atmospheric column carbon dioxide (XCO₂) at certain overpass times (usually around mid-day) requires consideration of strong diurnal variations of biosphere-atmosphere carbon fluxes. Another area where half-hourly data products would be a crucial piece of information are land-atmosphere feedback modeling studies. The derived products could allow to check the cross-consistency, since many processes governing land-atmosphere interactions, e.g., related to the formation of heavy rainfall or heat waves, in fact operate at subdaily time scales (Dirmeyer et al., 2012).

In view of the need for global high-frequency flux data, we aim at increasing the temporal resolution of data-driven carbon and energy flux products to subdaily scales by estimating half-hourly values at global scale. We tackle the problem of predicting diurnal cycles with half-hourly values globally for both carbon and energy fluxes between biosphere and atmosphere by treating the upscaling task as a large-scale regression problem. From the machine learning perspective, the random forest regression framework serves as a basis for our computations due to its good performance and suitable scaling properties with respect to large data sets. We test two approaches for estimating half-hourly GPP with random forest models and evaluate both of them using a leave-one-site-out cross-validation strategy for a large set of FLUXNET sites. We produce derived global products with 0.5° spatial and half-hourly temporal resolution for GPP and NEE as well as for LE and H covering the years 2001 to 2014. For the sake of clarity, some figures in this paper only show the results obtained for GPP although similar plots can easily be created for the other three fluxes that have been considered. Thus, GPP serves as the running example throughout this paper.

The following sections are organized as follows. First, we introduce the used data basis by describing both site-level and global forcing data (Sect. 2) that are used in our study. Then, we explain the methodological background (Sect. 3) and the algorithmic concept (Sect. 4) of the proposed upscaling approaches in detail. In Sect. 5, extensive evaluations and comparisons of the different upscaling strategies are presented based on leave-one-site-out cross-validation, which validate the proposed approach and the derived global products. Afterwards, we present the empirical results at global scale in Sect. 6 and highlight intrinsic features of the new data sets. Finally, we discuss both our findings and possible improvements for future applications (Sect. 7). The global data sets presented in this paper are freely available to any interested user (see Sect. 8).

2 Data sources

In this section, we shortly describe the two data sources we are using in our studies. For learning the relationships between predictor variables and the target fluxes as well as for the cross-validation experiments, we make use of site-level data extracted



at FLUXNET sites that are equipped with eddy covariance towers (Sect. 2.1). To perform global upscaling of diurnal cycles, we require gridded data products of the predictor variables on a global scale. The latter are described in Sect. 2.2.

2.1 Site-level data

We aim at predicting fluxes on a half-hourly resolution which can currently only be measured using the eddy covariance method at globally distributed towers. The eddy covariance method (Baldocchi et al., 1988; Aubinet et al., 2012) has revolutionized the study of land-atmosphere interactions by offering a means of continuously observing net land-atmosphere fluxes of CO₂, latent heat, and sensible heat (Balddocchi, 2014). Today, the towers are running for sufficient time to enable studies about the interannual variability of land-surface dynamics, yet the temporal representativeness is highly uneven (Chu et al., 2017). In our studies, we rely on data from 222 FLUXNET eddy covariance towers (see Appendix A for a full list of involved sites). All towers are typically equipped with a suite of comparable micrometeorological devices so that a local training of machine learning methods is possible. Gross carbon fluxes can be derived using different flux partitioning methods as described, e.g., by Reichstein et al. (2005) or Lasslop et al. (2010), and here we rely on the former method. In all our experiments, we only make use of measured fluxes, i.e., no gapfilling has been applied and gaps in the half-hourly flux data have simply been ignored. As predictor variables, we use the ones selected by Tramontana et al. (2016, Table 2) in the RS+METEO setup that they use for estimating fluxes at daily resolution. Besides the plant functional type (PFT), these are variables containing remote sensing data from MODIS satellites and meteorological data either in situ measured at the flux tower locations or from long-term time series of the ERA-Interim data set at daily resolution. It should be noted that only the mean seasonal cycles (and derived properties like amplitude, minimum, mean, and maximum) are taken into account for the vegetation indices (normalized difference vegetation index - NDVI, enhanced vegetation index - EVI) as well as for the normalized difference water index (NDWI), the fraction of absorbed photosynthetically active radiation (fAPAR), and the land surface temperature (LST). In contrast, the actual values of air temperature, global radiation, potential radiation, relative humidity and of different water availability indices have been used. For detailed descriptions, we refer to the corresponding sections in the paper of Tramontana et al. (2016, Sect. 2.1.3 and 2.1.4 as well as Table 2).

2.2 Global forcing data

In order to compute the global flux products at half-hourly resolution via upscaling, we require the predictor variables mentioned in the previous section at global scale, i.e., the variables of the RS+METEO setup from Tramontana et al. (2016, Table 2). Concerning the remote sensing variables, MODIS observations are used to compute mean values for each PFT and each day aggregated to 0.5° spatial resolution. The distributions of each PFT stem from the MODIS collection 5 global land cover product of Friedl et al. (2010). Climatic data for the meteorological variables have been obtained from CRUNCEPv6³, which denotes a merged data product of monthly observation-based climate variables at 0.5° spatial resolution from the Climate Research Unit (CRU) and 6-hourly reanalysis data from the National Centers for Environmental Prediction (NCEP).

³http://esgf.extra.cea.fr/thredds/catalog/store/p529viov/cruncep/V6_1901_2014/catalog.html



3 Methodological background: random forest regression

Ensemble methods are powerful machine learning tools that combine the outputs of many individual prediction models to obtain more accurate estimations for a target variable. The random forest approach (Breiman, 2001) denotes a typical example, which consists of a set of randomized decision trees. Decision trees in general can be built for classification or regression purposes and they are therefore also called classification trees or regression trees. Multiple decision trees form a decision forest and learning their decision rules typically involves some randomization, which leads to the name randomized decision forest or short random forest. In the following, the concepts of learning and testing randomized decision trees for regression tasks are briefly summarized, because they denote the essential parts of random forest regression. The reader who is familiar with the technical details of random forest regression can skip this section and may directly continue with the proposed upscaling approaches in Sect. 4.

3.1 Randomized decision tree

Given a training set $\mathcal{X} = \{\mathbf{x}^{(i)} \in \mathbb{R}^D : i = 1, 2, \dots, N\}$ of N samples with each sample \mathbf{x} being a vector consisting of D predictor variables x_1, x_2, \dots, x_D and a corresponding real-valued target variable $y \in \mathbb{R}$ with observations $y_1, y_2, \dots, y_N \in \mathbb{R}$ for the N training samples, the goal is to find a set of rules that allow for predicting y based on \mathbf{x} . In case of a decision tree, these rules are binary tests for individual predictor variables with simple thresholds. A hierarchical tree structure is built as shown in Fig. 1 by selecting at each node i a predictor variable $d_i \in \{1, 2, \dots, D\}$ and a threshold $t_i \in \mathbb{R}$. The estimate of a node i is the average value \bar{y}_i of the observations computed from training samples that reach this node. The first node of a decision tree called root node contains all training samples and hence, the overall mean value $\bar{y}_1 = \frac{1}{N} \sum_{n=1}^N y_n$ of observations y_n from all N training samples is an extremely coarse approximation that needs to be refined depending on the constellation of the input variables \mathbf{x} .

Starting at node 1 in Fig. 1, the set of training samples is partitioned into two subsets, represented by nodes 2 and 3, based on the result of the binary test $x_{d_1} \leq t_1$. Both nodes, node 2 and node 3, have associated predicted outputs \bar{y}_2 and \bar{y}_3 that are computed as the average observation of samples that reach the corresponding node. The split parameters d_1 and t_1 are optimized such that the mean squared error for the training samples is minimized given the respective predictions from node 2 or node 3. Such splits are then computed for nodes 2 and 3 as well as for further derived nodes until a stopping criterion is fulfilled. Typical stopping criteria are: (i) a split would create nodes with less than N_{\min} samples, (ii) the variance of the observations from samples in a node is smaller than some threshold σ_{\min}^2 , or (iii) a maximum depth d_{\max} of the tree is reached. The depth of a tree is defined as the largest distance of a node to the root of the tree. Values of the parameters N_{\min} , σ_{\min}^2 , and d_{\max} can be changed to obtain either smaller or larger trees, which allows for controlling the runtime of the algorithm and the trade-off concerning generalization and overfitting.

It is usually the case that multiple stopping criteria are tested and if one of them is fulfilled, the current node is not split but becomes a leaf node that stores a final output prediction. Learning a decision tree therefore consists of computing split

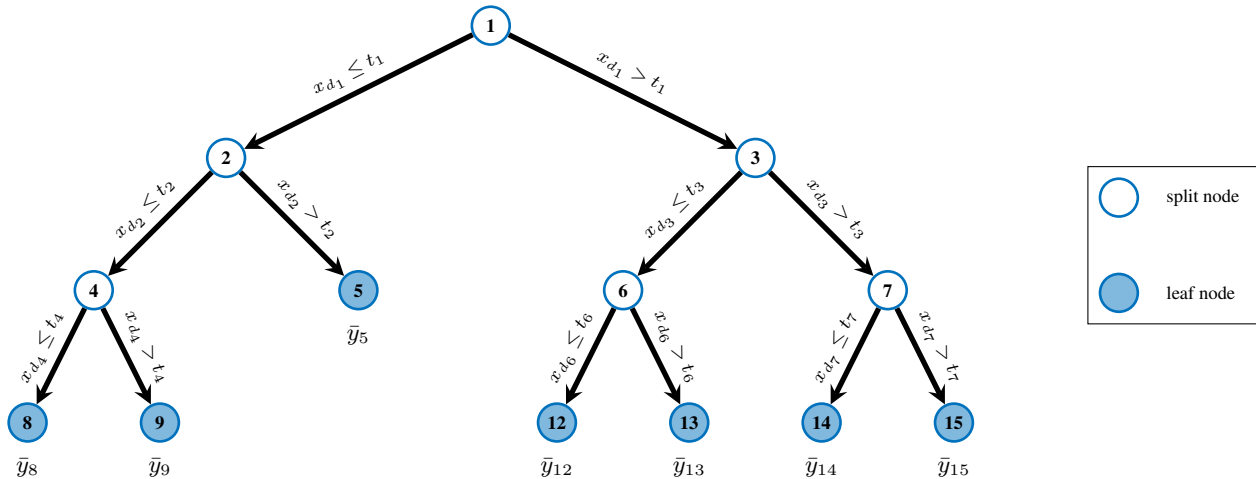


Figure 1. General structure of a decision tree for regression: binary splits with thresholds for individual predictor variables will be used to navigate a sample \mathbf{x} to a leaf node that stores a continuous estimate for the target variable.

parameters until only leaf nodes remain that are not split any further (Fig. 1). Hence, one distinguishes between split nodes as the inner nodes of a tree and leaf nodes, each of which contains the estimated output for any sample that reaches this node.

To reduce overfitting to the training set, the learning process is carried out in a stochastic manner by introducing several types of randomization. Whenever split parameters need to be identified, only a random subset of the D predictor variables is taken into account. Furthermore, only a fixed amount of randomly chosen thresholds is tested. Both randomization techniques also lead to reduced computation costs compared to exhaustive search. To predict the output y^* of a test sample \mathbf{x}^* , it is passed through the tree according to the evaluation of the split functions at the inner nodes starting at the root node. This is done until a leaf node ℓ is reached, whose precomputed output \bar{y}_ℓ is assigned to \mathbf{x} . However, more accurate predictions can be achieved by considering an ensemble of randomized decision trees.

10 3.2 Random forest as an ensemble of randomized decision trees

In his work about random forests, Breiman (2001) makes use of a technique called bagging that he has introduced before (Breiman, 1996). Bagging is an acronym for bootstrap aggregating (Breiman, 1996) and stands for aggregating predictions of individual models that have been learned based on different sample sets built from the original training dataset. More precisely, individual sample sets are constructed by random sampling with replacement from the original training set, which is commonly referred to as bootstrapping. If the training set contains N samples, it is possible that each of the sampled sets either contains also N samples (which produces different sets with individual instances occurring several times due to random sampling with replacement) or only a fraction ν of the N samples. In both cases, the random subset selections introduced by bagging additionally prevent overfitting to the training set. For bagging, predictions from an ensemble of individual models are utilized and an ensemble of randomized decision trees is called random forest, randomized decision forest, or short RDF. Each

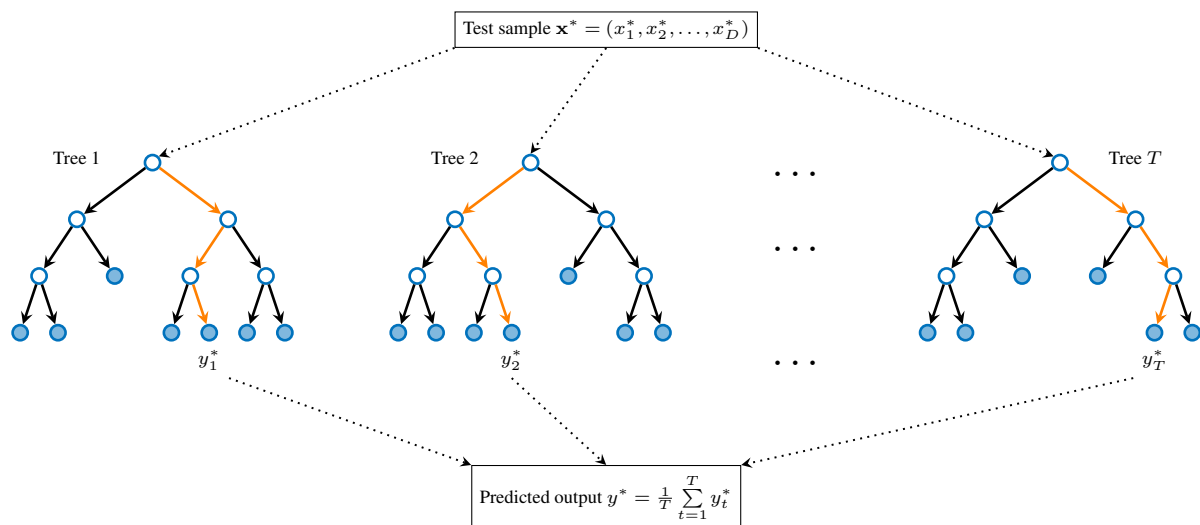


Figure 2. Predicting the output y^* of a sample \mathbf{x}^* with a randomized decision forest is carried out by averaging the individual predictions obtained from the T decision trees in the ensemble.

tree in the ensemble is learned separately and independent from the other trees. Due to the involved randomization techniques during learning of a single tree described before, different trees contain different binary tests and provide different estimates for a single input sample x . The individual predictions of each tree are then aggregated to obtain a final result, which is typically carried out by simple averaging as shown in Fig. 2. However, the number of trees N_{tree} is a hyperparameter whose value needs to be chosen in advance but good assignments depend on various aspects. Since Breiman (1996) pointed out that bagging leads to predictions which are more stable compared to a single model, especially if the decision function of the single model is highly instable with respect to the training set, a larger number of trees is in favor of higher stability. On the other hand, more trees are causing higher computational costs during both learning and testing. In addition, a saturation effect for the prediction accuracy can typically be observed for an increasing number of trees. Hence, accuracies obtained by cross-validation for different numbers of trees can help to identify this saturation and a proper value for N_{tree} .

4 Methods for upscaling diurnal cycles

The problem of upscaling diurnal cycles of carbon and energy fluxes can be formulated as a large-scale regression task, i.e., estimating half-hourly fluxes for every grid cell of the globe based on a set of predictor variables. These predictor variables typically encode climate conditions or Earth observations obtained from remote sensing at the corresponding spatial positions. However, the temporal resolutions of variables can be different, not only between the target flux (half-hourly) and a predictor variable (e.g., daily), but also among different predictor variables (e.g., daily and half-hourly). Therefore, two prediction approaches for upscaling diurnal cycles are presented in Sect. 4.1 and Sect. 4.2, respectively, which account for this mismatch of temporal resolutions. Although both approaches can be equipped with any regression algorithm, we have decided to use the

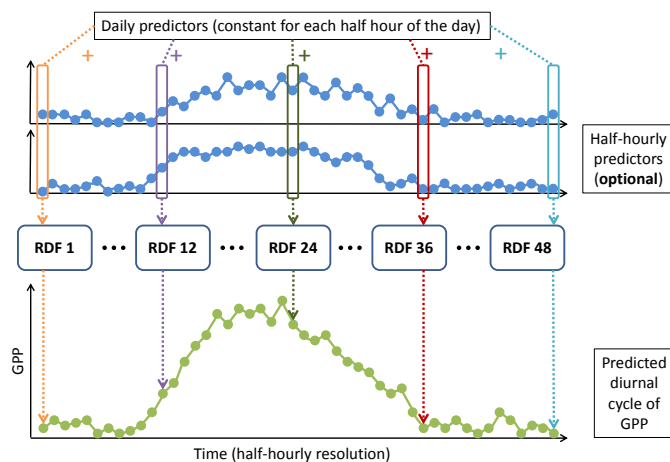


Figure 3. Visualization of the first prediction approach: an individual RDF regression model is learned for each half hour of a day, which allows for predicting diurnal cycles only based on predictors with daily resolution. However, predictors with half-hourly resolution can also be incorporated.

random decision forest (RDF) as a nonlinear method, which has been summarized in the previous section. The main reasons for this choice are the fast learning and testing algorithms, because the upscaling tasks involve a huge number of samples such that learning nonlinear kernel methods for regression like Gaussian processes (Rasmussen and Williams, 2006) are impractical due to both memory demand and computation time. Furthermore, Tramontana et al. (2016) have shown in their cross-validation experiments that the accuracies for estimating fluxes vary only slightly among different machine learning methods.

4.1 First prediction approach: an individual regression model for every half hour of the day

Recall from the beginning of Sect. 4 that the two main challenges for upscaling diurnal cycles to global scale are the huge amount of data which needs to be handled as well as the mismatch of temporal resolutions between predictor variables and the target fluxes. The first approach for predicting diurnal cycles has the advantage that it allows for using only predictors of daily temporal resolution. This is very important, because daily (average) values are often more accurate with respect to measurement noise and the availability of daily values is much higher compared to half-hourly values, especially when considering global products with values for every grid cell. Furthermore, variables derived from remote sensing are often limited to daily temporal resolution. Therefore, the first prediction approach involves learning an individual regression model for each half hour of the day and as indicated at the beginning of Sect. 4, RDF regression models are utilized for handling large-scale data. A schematic overview for a single day and a diurnal cycle of GPP is shown in Fig. 3.

Even if one uses only predictor variables of daily temporal resolution which can be treated as constant for the whole day, different values of the target flux for different half hours of the day can be estimated. The reason is that the 48 different RDF models are learned with different values for the target output variable y , although the same values for the predictor variables x are used. For example, an RDF model that is learned for a half hour during night only covers the rather small

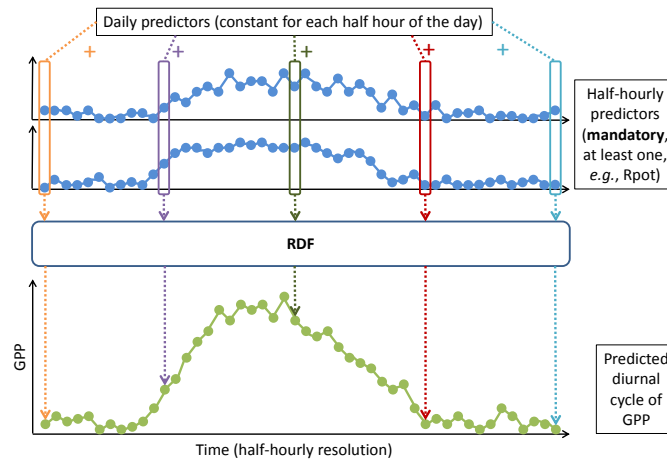


Figure 4. Visualization of the second prediction approach: a single RDF regression model is able to predict the flux at every half hour of the day if at least one predictor variable has a half-hourly temporal resolution (such as the potential radiation Rpot).

range of observations y that can be observed at this time, while the range of observations around noon is typically much larger, especially during the growing season. Hence, the 48 RDF models and their estimated outputs differ only because of different observations y that are provided during learning together with the same set of samples \mathcal{X} . Of course, it is also possible to incorporate predictor variables at half-hourly temporal resolution, which would directly fit to the resolution of the target flux.

- 5 Such predictor variables could further enhance the distinction of individual half hours of a day and could lead to more accurate estimations. However, they are optional and not required for this prediction approach as indicated in Fig. 3.

4.2 Second prediction approach: a single regression model suitable for all half hours of the day

In contrast to the first prediction approach, the second approach only uses a single regression model that is able to estimate different values for different half hours of the same day. It is then necessary that the distinction between these half hours
 10 is somehow encoded in the predictor variables, which is not the case if only predictors of daily resolution are incorporated. Therefore, this approach requires at least one predictor variable at half-hourly temporal resolution. Fortunately, the potential radiation (Rpot) can be calculated globally at half-hourly resolution, because it only depends on the time as well as the solar angle that is defined given the spatial position via latitude and longitude. Thus, the second approach with a single model, as
 15 visualized in Fig. 4, is therefore also applicable for upscaling diurnal cycles to global scale. Again, we make use of an RDF regression model due to its large-scale capabilities.

In addition, besides the potential radiation also its first-order temporal derivative can be incorporated as an additional half-hourly predictor, which helps for distinguishing between morning and afternoon. For all our computations, we have always included this derivative in case we also used Rpot. The nice property of this approach is that information about the physical relationships between the predictor variables and the fluxes can be shared among different half hours during learning of the
 20 single regression model, which is not the case for individual models as mentioned in the previous section. This second pre-



diction approach therefore seems to be more plausible from a physical perspective, because the distinction between different half hours of the day is made based on the data, e.g., (potential) radiation, and not enforced by learning independent regression models for each half hour.

Although meteorological variables such as air temperature or vapor pressure deficit (VPD) as well as incoming radiation are also potential candidates for predictors that encode subdaily variations of the fluxes, they are currently only available with a half-hourly resolution at individual sites, e.g., also measured at eddy covariance towers. Due to the missing half-hourly meteorological data products at global scale, it is not possible to use these information for the global upscaling. However, since we are interested in whether such data products could be beneficial for upscaling diurnal cycles, we use the corresponding site-level data in our cross-validation analysis to get further insights. Hence, meteorological variables measured at the eddy covariance towers of FLUXNET can still be used for validating the upscaling approaches and evaluations of cross-validation experiments are presented in the next section.

5 Assessing different upscaling strategies with leave-one-site-out cross-validation

The global products presented in this paper cover diurnal cycles of four fluxes: GPP, NEE, LE, and H. For each of these fluxes, we have consistently performed cross-validation experiments but the results presented in the following only consider GPP as a running example. We have decided to apply RDF models for regression due to its efficient training and testing algorithms even in case of large-scale data as well as its good performance for upscaling daily mean values of GPP (Tramontana et al., 2016). Each RDF was trained with 100 randomized decision trees, because we observed a saturation effect for the prediction performance in preliminary experiments when increasing the number of decision trees. Further parameters have been set to its default values in Matlabs TreeBagger function, e.g., a minimum leaf size of five samples, since we hardly observed any changes in the overall performances when varying the parameter settings. Performances are measured using the Nash-Sutcliffe modeling efficiency (Nash and Sutcliffe, 1970) based on a leave-one-site-out cross-validation scheme.

The motivation for the leave-one-site-out evaluation as a special case of cross-validation is twofold. First, we want to evaluate regression models that have been learned from as many observations as possible and based on training sets that are most similar to the training set that will be used to compute the global products, which will incorporate all the available data from all FLUXNET sites. Second, we intend to mimic a realistic scenario most similar to the upscaling task by predicting fluxes at locations where no training data has been taken from. As a consequence, we predict fluxes at one FLUXNET site using a regression model learned with all observations from all the remaining FLUXNET sites. After doing this for each individual site, we concatenate all site-specific predictions to form a long vector of predictions that can be compared to the corresponding observations measured at the corresponding sites. This allows for a general evaluation of the prediction approaches in a site-independent manner.



5.1 Overview of experiments

We start with a short overview of the experiments that have been conducted in order to clarify our ideas and motivations behind them. In Sect. 5.2, we compare the two different prediction approaches for upscaling diurnal cycles that have been introduced in Sect. 4. Furthermore, we focus on comparing different sets of predictor variables, e.g., the effect of meteorological variables at half-hourly resolution on the prediction performances. Evaluations of the prediction performance for monthly average diurnal cycles derived from the half-hourly values are shown in Sect. 5.3. These average diurnal cycles per month nicely summarize the fluxes over a longer time period (one month) by still keeping a half-hourly pattern that allows for monitoring subdaily variations. In addition, averaging diurnal cycles for a specific month removes noise in the individual half-hourly measurements and reduces the effects of day-to-day variability, e.g., caused by cloud coverage, which allows for comparing the main characteristics of the observations and the predictions for the selected month. The evaluations of monthly average diurnal cycles play an important role for our provided data products, since we also prepare derived products that contain these monthly average patterns only. With two additional experiments presented in Sect. 5.4, we want to demonstrate that the quality of our achieved predictions is not inherently limited by the presented upscaling approaches but rather by missing site-specific information and latent driving forces that are not encoded in the set of predictor variables that has been used. This is not a specific problem of upscaling diurnal cycles of fluxes at half-hourly resolution, but a general challenge for all upscaling approaches that deal with carbon and energy fluxes, also at coarser time scales.

5.2 Improved predictions by using half-hourly meteorological data

In the following, we compare the results of our presented prediction approaches for half-hourly GPP depending on different sets of predictor variables, which have been obtained by using the leave-one-site-out strategy explained in the beginning of Sect. 5. As the core for all sets of predictors, we include those variables that have been used for upscaling daily mean GPP values by Tramontana et al. (2016). In fact, we use exactly the set of predictors that corresponds to the RS+METEO setup that has been defined by Tramontana et al. (2016, Table 2) and we refer to this table for details about the variables. Given the explanations of the first prediction approach in Sect. 4.1 with individual regression models for each half hour, we can directly use these predictor variables for estimating half-hourly GPP values. However, we also added the potential incoming radiation R_{pot} at half-hourly resolution to encode subdaily variations in the predictors as well as its first temporal derivative to distinguish between morning and afternoon. Furthermore, we have tested a third set of predictors by additionally incorporating meteorological variables with half-hourly resolution measured at FLUXNET tower sites. The added variables are air temperature, vapor pressure deficit, and incoming global radiation. In a nutshell, the three sets of predictor variables consist of: (i) daily predictors, (ii) daily predictors + half-hourly R_{pot} , and (iii) daily predictors + half-hourly R_{pot} + half-hourly meteorological predictors, besides static predictors like PFT that are used in all three cases. The second and third set are also used in the experiments for the second prediction approach that includes only a single regression model, because half-hourly information is encoded in some of the predictor variables.

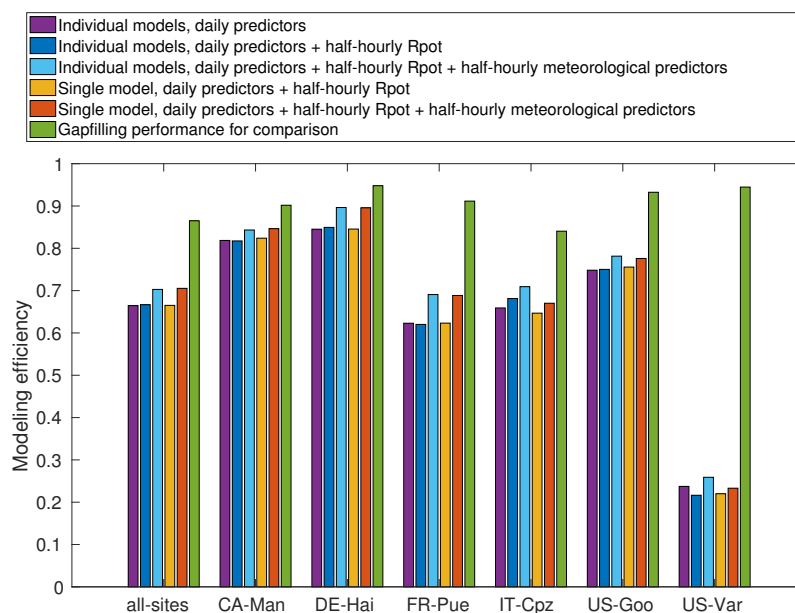


Figure 5. Prediction performances for individual half-hourly values of GPP depending on different sets of predictor variables are shown. We compare our two proposed prediction approaches (individual RDF models and single RDF model) and also include the results of a gapfilling algorithm for comparison. Looking at the results of all sites as well as at site-specific performances, we observe that meteorological predictor variables at half-hourly resolution clearly improve the accuracies of the estimations.

In Fig. 5, we have visualized the results for all sites as well as for selected FLUXNET towers. Only for comparison to the leave-one-site-out experiments, we also included the modeling efficiency of a gapfilling algorithm (Reichstein et al., 2005) as a potential upper bound for our predictions. In fact, each measured value is also estimated by a gapfilling algorithm that makes use of flux measurements at the same site under similar climate conditions and hence provides only a theoretical baseline, because it can not be applied for predicting fluxes at locations without any observations. First, we focus on the leftmost group of bars in Fig. 5, which shows the modeling efficiencies for all sites. Looking at the results for the first prediction approach with individual models for each half hour, including half-hourly Rpot only slightly improves the average performance (0.67 compared to 0.66), which is probably also caused by the stochastic nature of the RDF learning algorithm. However, including the meteorological predictors at subdaily temporal resolution leads to an increase of the performance to 0.70 modeling efficiency. A similar improvement can be observed for the second prediction approach with a single model for all half hours of the day, because the modeling efficiency increases from 0.67 to 0.71 when including half-hourly meteorological data. This highlights that varying subdaily meteorological conditions have a clear impact on predicting the diurnal cycles of GPP fluxes.

On the one side, half-hourly Rpot has almost no influence on the accuracy of the predictions but on the other side, it allows for applying the second prediction approach with only a single regression model. Hence, it may seem more natural from a physical perspective to distinguish individual half hours of the day by the provided half-hourly Rpot rather than enforcing the distinction by separately learned regression models. Comparing both prediction strategies, they achieve similar performances

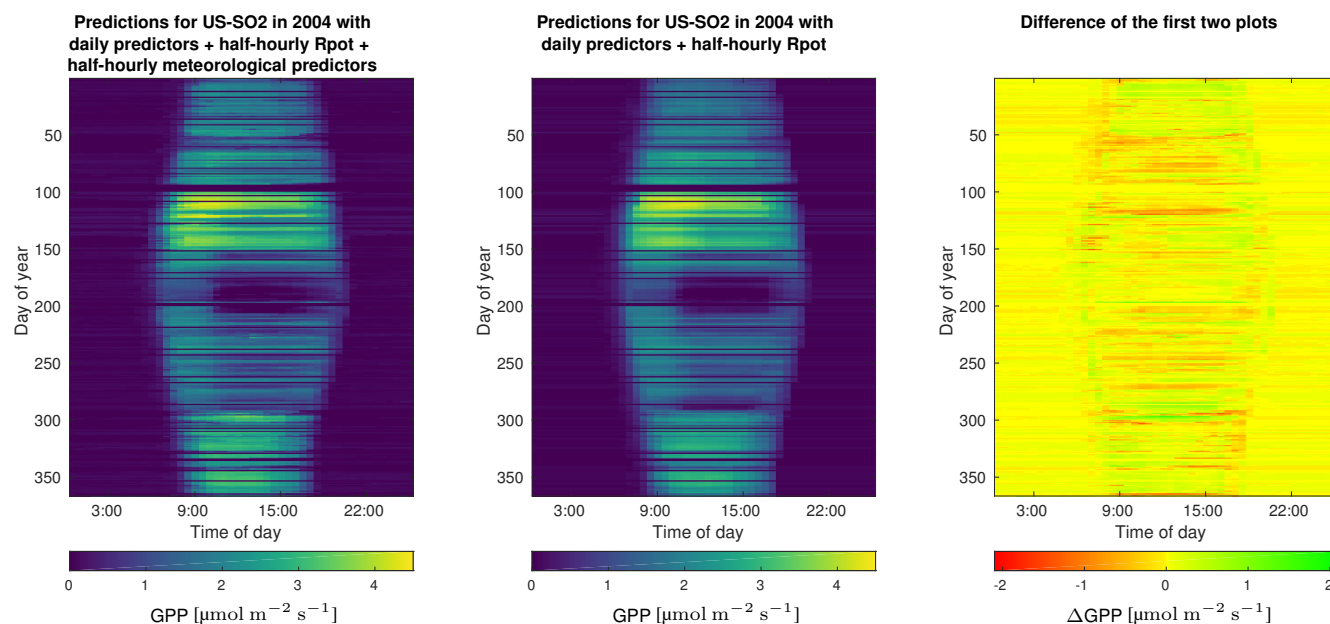


Figure 6. Fingerprint plots of half-hourly GPP fluxes estimated for US-SO2 in 2004 with leave-one-site-out cross-validation show that short-term fluctuations on subdaily scales are captured better when also half-hourly meteorological predictors have been included (left) compared to only using half-hourly Rpot (center). The difference of the first two plots (right) also emphasizes this observation.

when using the same set of predictor variables. Since it is more convenient from a technical perspective to only handle a single regression model instead of 48 different models, the evaluations in the following sections will focus on the second prediction approach with a single RDF model that is suitable for predicting values at every half hour of the day. It is interesting to note that relative performance differences between the two prediction approaches and among the different sets of predictor variables look very similar when considering single sites only. In all our cross-validation experiments, the best prediction accuracies are always achieved by including half-hourly meteorological variables in the set of predictors. However, absolute performance values vary among sites. As shown in Fig. 5, the accuracies at the sites CA-Man and DE-Hai are between 0.80 and 0.90 modeling efficiency, whereas lower performances (between 0.60 and 0.80) have been achieved for predicting GPP at FR-Pue, IT-Cpz, and US-Goo. Moreover, the fluxes at US-Var seem to be very difficult to estimate, since only modeling efficiencies between 0.20 and 0.30 were obtained.

To further highlight the difference in the predictions when half-hourly meteorology is encoded in the driver variables, we visualize all half-hourly estimations over one year at a specific site using fingerprint plots. A fingerprint in this context is a plot with 365 rows corresponding to 365 days of a year and 48 columns corresponding to 48 half hours of each day such that one fingerprint contains all half-hourly values of a whole year and shows characteristic patterns for the selected site, e.g., length of the growing season. In Fig. 6, the estimations of half-hourly GPP with and without half-hourly meteorological predictors are shown in two individual fingerprint plots and their difference is indicated in a third plot. As expected, the predictions based

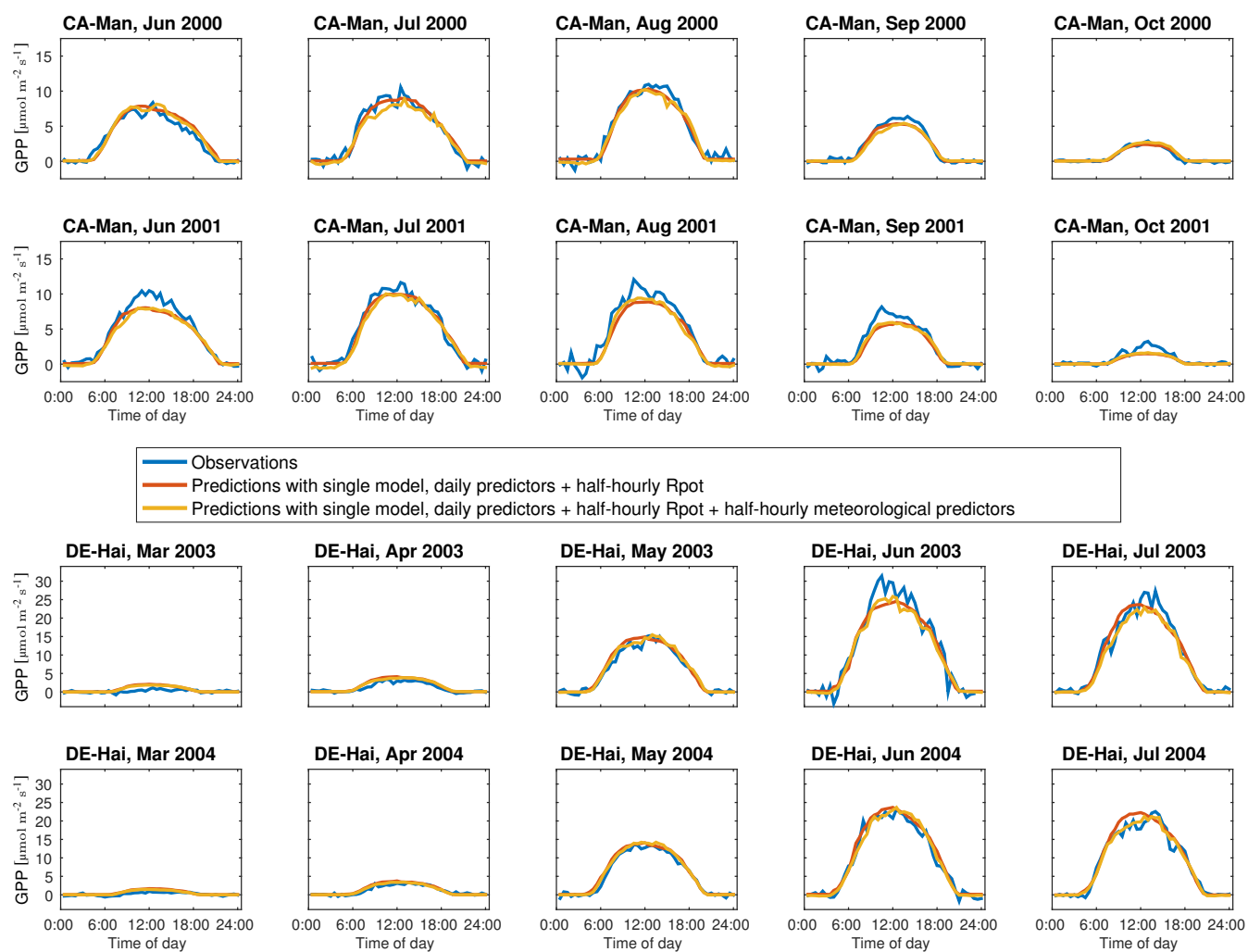


Figure 7. Some example sites with average diurnal cycles for different months comparing two prediction approaches with the observations.

on half-hourly meteorology contain much more short-term fluctuations during single days, whereas smoother estimations are obtained when only half-hourly Rpot is used as a subdaily driver. This can also be observed from the difference of the two fingerprints. Hence, half-hourly meteorological predictor variables are required to better capture high-frequency changes of the fluxes on subdaily scales. In the following, we take a closer look at average diurnal cycles per month.

5 5.3 Analyzing average diurnal cycles per month

For visual inspection purposes, it is useful to look at average diurnal cycles for individual months at specific sites. Example plots are shown in Fig. 7. They show that our predictions are able to produce the typical shapes of diurnal courses which are in line with corresponding observations. For the depicted predictions, only observations from other sites have been used to learn



Table 1. Modeling efficiencies for the predictions of all sites obtained from the leave-one-site-out experiments are summarized and here we differentiate between comparing all individual half-hourly values with the observations and only looking at monthly average diurnal cycles.

| APPROACH | COMPARING ALL HALF-HOURLY VALUES | COMPARING MONTHLY AVERAGE DIURNAL CYCLES |
|--|-------------------------------------|---|
| <i>Individual models</i> | | |
| daily predictors | 0.66 | 0.78 |
| daily predictors + half-hourly Rpot | 0.67 | 0.78 |
| daily predictors + half-hourly Rpot + half-hourly meteorological predictors | 0.70 | 0.80 |
| <i>Single model</i> | | |
| daily predictors + half-hourly Rpot | 0.67 | 0.78 |
| daily predictors + half-hourly Rpot + half-hourly meteorological predictors | 0.71 | 0.80 |
| <i>Gapfilling</i> | 0.87 | 0.93 |

the regression models. It is important to note that averaging diurnal cycles within a month reduces noise in the observations as well as in the predictions of a single day, but also smoothens high frequency short-term fluctuations, e.g., due to (partial) cloud coverage, and yet decreases the influence of day-to-day variations. Hence, these mean diurnal courses are more stable and an evaluation of averaged predictions with respect to averaged observations for all sites leads to larger modeling efficiencies compared to those reported in the previous section. An overview of modeling efficiencies when comparing all half-hourly values versus only looking at the average diurnal cycles is given in Table 1.

In fact, modeling efficiencies for monthly average diurnal cycles increase on average across all sites to a range between 0.78 and 0.80 depending on the set of predictor variables with the best results being accomplished again by incorporating half-hourly meteorological data. This can also be observed from Fig. 8, which is organized in the same way as Fig. 5 but contains the achieved modeling efficiencies for comparing monthly average diurnal cycles of observations and predictions. For the monthly mean diurnal courses, the difference between only using half-hourly Rpot or also including half-hourly meteorology is not so large anymore compared to the evaluations for all half-hourly values. This holds for both the overall accuracies for all sites as well as for single selected sites. As previously mentioned, the reason is that averaging fluxes within a month reduces the effect of short-term fluctuations on subdaily scales. Therefore, if one is only interested in monthly average diurnal cycles, the results obtained by using daily predictors and half-hourly Rpot are only slightly worse compared to including half-hourly meteorology and for some sites, the prediction performances are even on the same level of accuracy. This is important to know, since we also provide a derived product from our global half-hourly fluxes that contains the monthly average diurnal cycles globally at the same spatial resolution (Sect. 6).

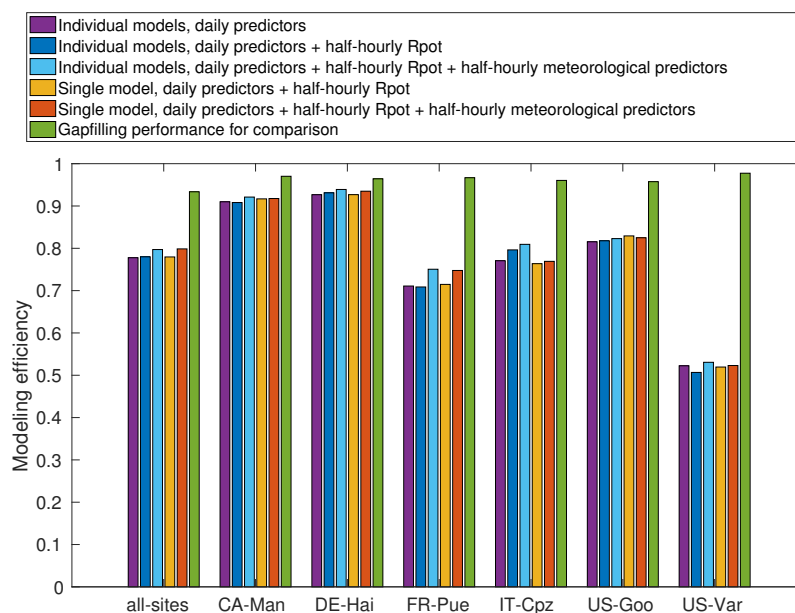


Figure 8. Prediction performances for monthly average diurnal cycles of GPP are shown in the same way as the accuracies for all half-hourly values in Fig. 5.

However, the average diurnal cycles can also be used to identify potential problems of the predictions. In Fig. 9, mean diurnal courses of several months at the sites FR-Pue and IT-Cpz are shown. It can be observed for both sites that the averaged observations are lower in the summer months compared to the corresponding predictions. In other words, the regression models overestimate GPP during these months. We believe that this is caused by the fact that our current prediction models are not able to cope with seasonal droughts, which is not a specific problem of the diurnal upscaling but a challenge that every upscaling approach for carbon and energy fluxes needs to tackle. Although the observations show decreased productivity due to drought stress in summer, the regression models still estimate large amplitudes of the diurnal cycles, i.e., a larger productivity. One reason for this behavior could be the insufficient characterization of water availability that is present in the set of predictor variables. Currently, we plan to investigate this issue in further research. In the following, we show that our current sets of predictor variables are lacking some site-specific information, probably not only with respect to water storage capacities.

5.4 Are we missing (site-specific) information in the predictors?

In order to gain any insights whether site-specific information is currently not well represented in the predictors, we have conducted two auxiliary experiments. During the first experiment, we additionally estimate GPP fluxes at each site in a leave-one-month-out setup and compare the resulting predictions with those of the leave-one-site-out setup. For the leave-one-month-out estimations, we learn and test regression models for each month at each site separately. Furthermore, each regression model for each month is only learned with data from the same site but measured in different months (and years). Hence,

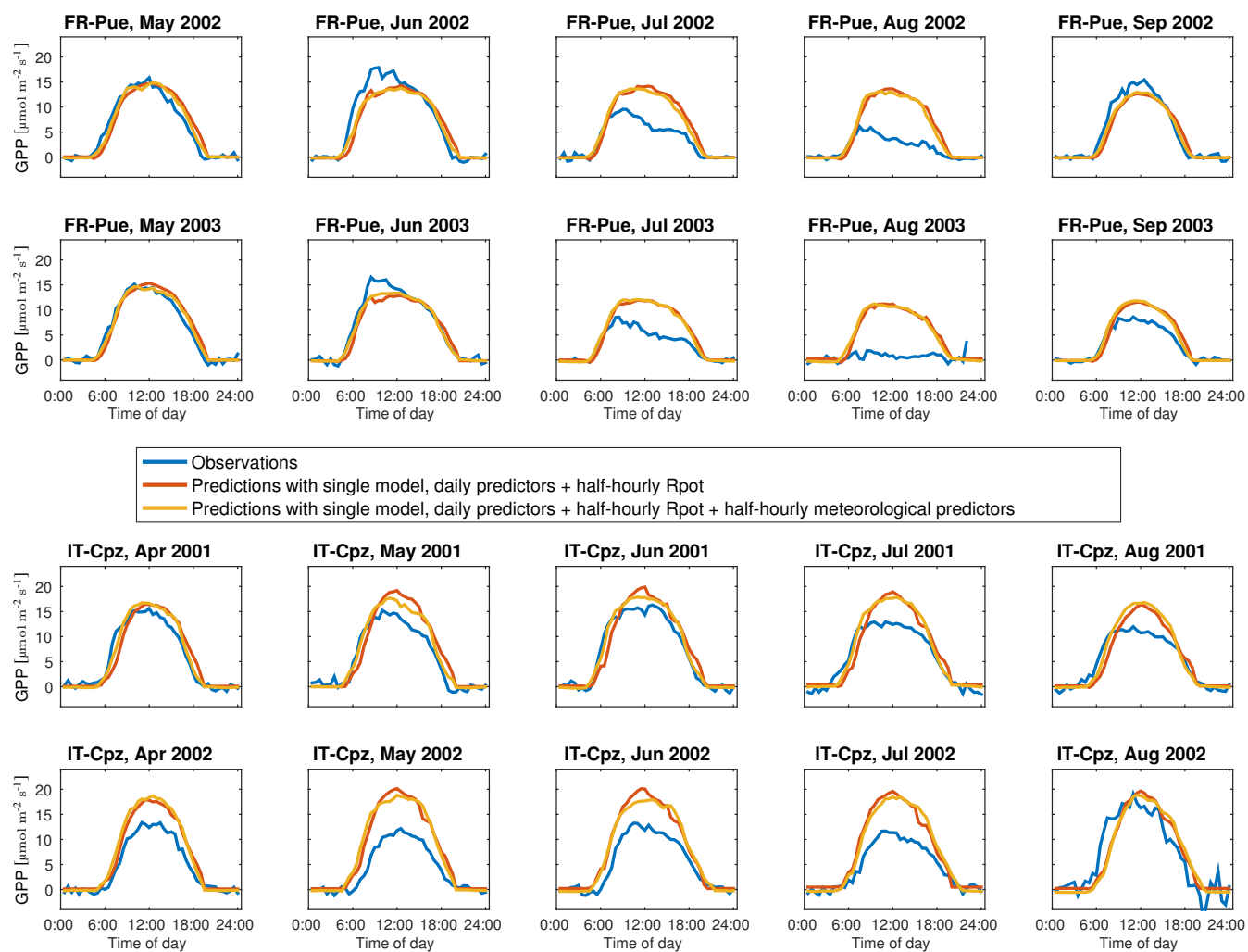


Figure 9. Average diurnal cycles of two sites showing the problems with seasonal droughts. The error in the prediction of the half-hourly fluxes increases during hot and dry summers for both sites, FR-Pue and IT-Cpz.

the regression models are highly site-specific, since only correspondences between predictor variables and GPP fluxes at a single site are used and predictions are made at the same site but in a different time period. As a result, we have observed improved flux estimations, which is shown exemplarily in Fig. 10 for IT-Cpz. It can be clearly seen that the gaps between averaged observations and averaged predictions are getting smaller and mostly almost disappear, i.e., the predictions match the observations much better in the leave-one-month-out setup. In terms of modeling efficiency, the performances increase to a range between 0.75 and 0.79 when comparing all individual half-hourly predictions from the leave-one-month-out setup at all sites with the observations (best performance with leave-one-site-out is 0.70). Regarding the comparison of averaged predictions and averaged observations within each month as presented in the previous section, the leave-one-month-out setup

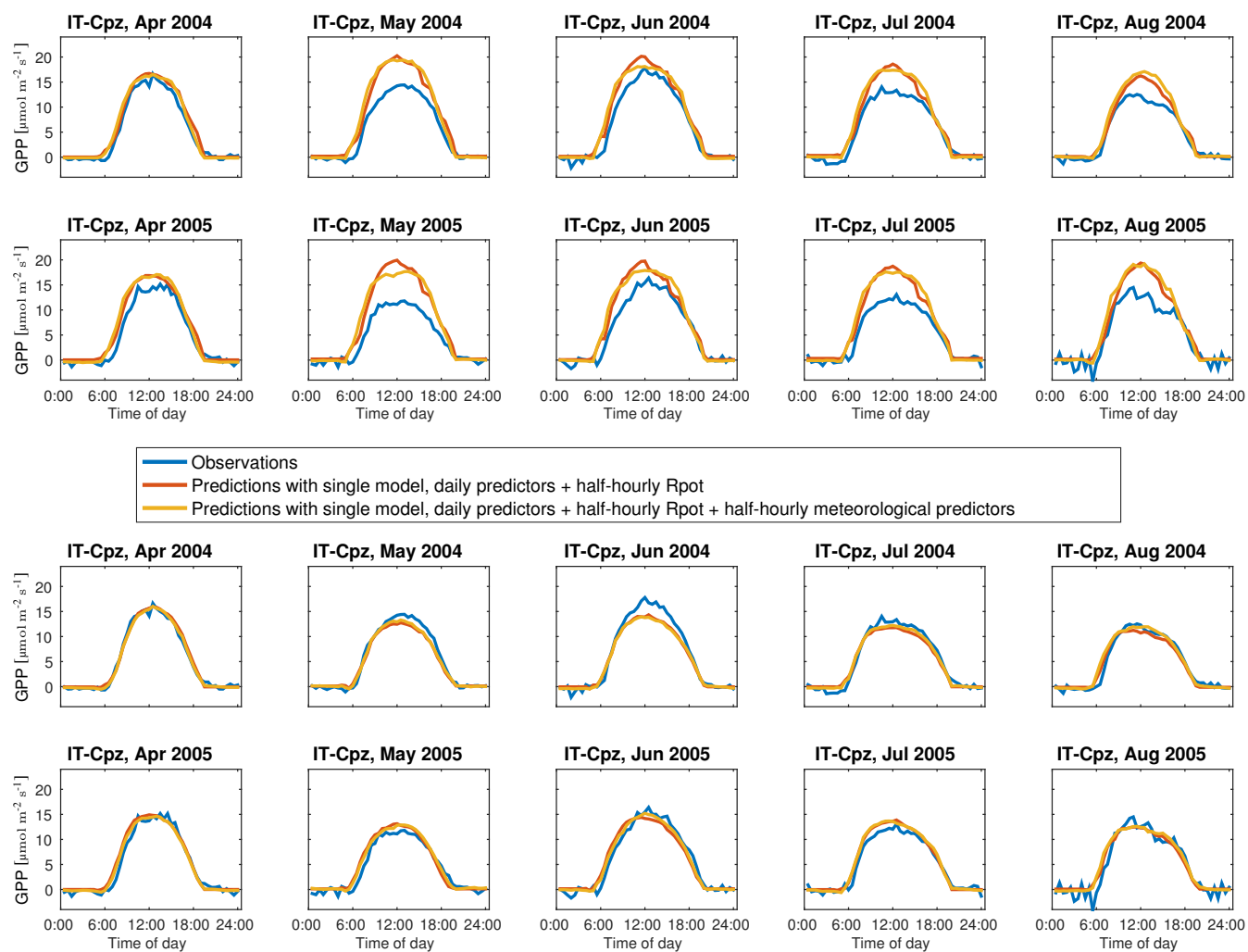


Figure 10. Comparison between leave-one-site-out (top rows) and leave-one-month-out (bottom rows) at IT-Cpz. It can be observed that site-specific training in the leave-one-month-out setup reduces the prediction errors during seasonal droughts. Thus, the drought effects only lead to problems when training across sites and predicting fluxes in the leave-one-site-out setup or for the upscaling when fluxes are estimated at locations where no towers exist.

leads to modeling efficiencies between 0.87 and 0.89. This is clearly larger than the results of the leave-one-site-out-experiment (best performance: 0.80). Table 2 allows for a direct comparison of the results from the leave-one-site-out and the leave-one-month-out experiments using both prediction approaches with the best set of predictor variables, i.e., daily predictor variables, half-hourly Rpot, and half-hourly meteorological variables.

5 This table also contains the prediction performances obtained from a second experiment, in which we have used the daily GPP as an additional daily predictor for our regression models in the leave-one-site-out setup. Of course, this is only possible in the cross-validation analysis where we actually have the daily averages of GPP, but the following evaluation reveals interesting



Table 2. Comparing modeling efficiencies of the two auxiliary experiments (leave-one-month-out setup and including the daily GPP as an additional predictor in the leave-one-site-out setup) to the best performances obtained with the leave-one-site-out experiments by using daily predictor variables, half-hourly potential radiation, and half-hourly meteorological variables.

| APPROACH | COMPARING ALL HALF-HOURLY VALUES | COMPARING MONTHLY AVERAGE DIURNAL CYCLES |
|--------------------------------|-------------------------------------|---|
| <i>Individual models</i> | | |
| Leave-one-site-out | 0.70 | 0.80 |
| Leave-one-month-out | 0.78 | 0.88 |
| Leave-one-site-out + daily GPP | 0.86 | 0.93 |
| <i>Single model</i> | | |
| Leave-one-site-out | 0.70 | 0.80 |
| Leave-one-month-out | 0.79 | 0.89 |
| Leave-one-site-out + daily GPP | 0.87 | 0.94 |
| <i>Gapfilling</i> | 0.87 | 0.93 |

insights. Using the daily average GPP basically incorporates information about the amplitudes of the diurnal cycles, hence drought effects of reduced productivity can directly be observed in this additional predictor variable. First of all, it can be seen in Fig. 11 that using the daily GPP as an additional predictor clearly improves the predictions at FR-Pue during summer months. Especially the decreased productivity in July 2005 and August 2005 can nicely be predicted by the regression models.

5 Since the daily GPP as an additional predictor constrains the size of the peak in a diurnal cycle, the predictions become much more powerful and the characteristic shapes of the diurnal cycles can be produced. The modeling efficiencies are even larger than those obtained with the leave-one-month-out setup. They are in the range of 0.83 to 0.87 for all half-hourly values at all sites, which is comparable with the performance of the gapfilling algorithm that has been included as an additional reference in Fig. 5 as well as in Table 2. The gapfilling also achieves 0.87 modeling efficiency, i.e., the upper performance limit shown
 10 as a green bar in the leftmost group in Fig. 5 can be obtained by including the daily GPP as an additional predictor. Regarding monthly averaged diurnal cycles, a modeling efficiency of up to 0.94 is obtained by the regression models that use daily GPP as an additional predictor, while gapfilling reaches 0.93. This is also summarized in Table 2.

From this experiment, we can conclude that the problems for predicting diurnal cycles of GPP are mainly caused by the lack of estimating the daily mean GPP properly. If the daily mean is given, predictions of half-hourly values are much more
 15 accurate. Hence, the main problems for the upscaling of half-hourly fluxes are not related to producing the right shapes of the diurnal courses, but turn out to be problems of estimating the correct amplitudes. These are then the same problems as for upscaling daily average values (or fluxes at coarser time scales) and are not introduced by the step of going to a larger temporal resolution in terms of half hours.

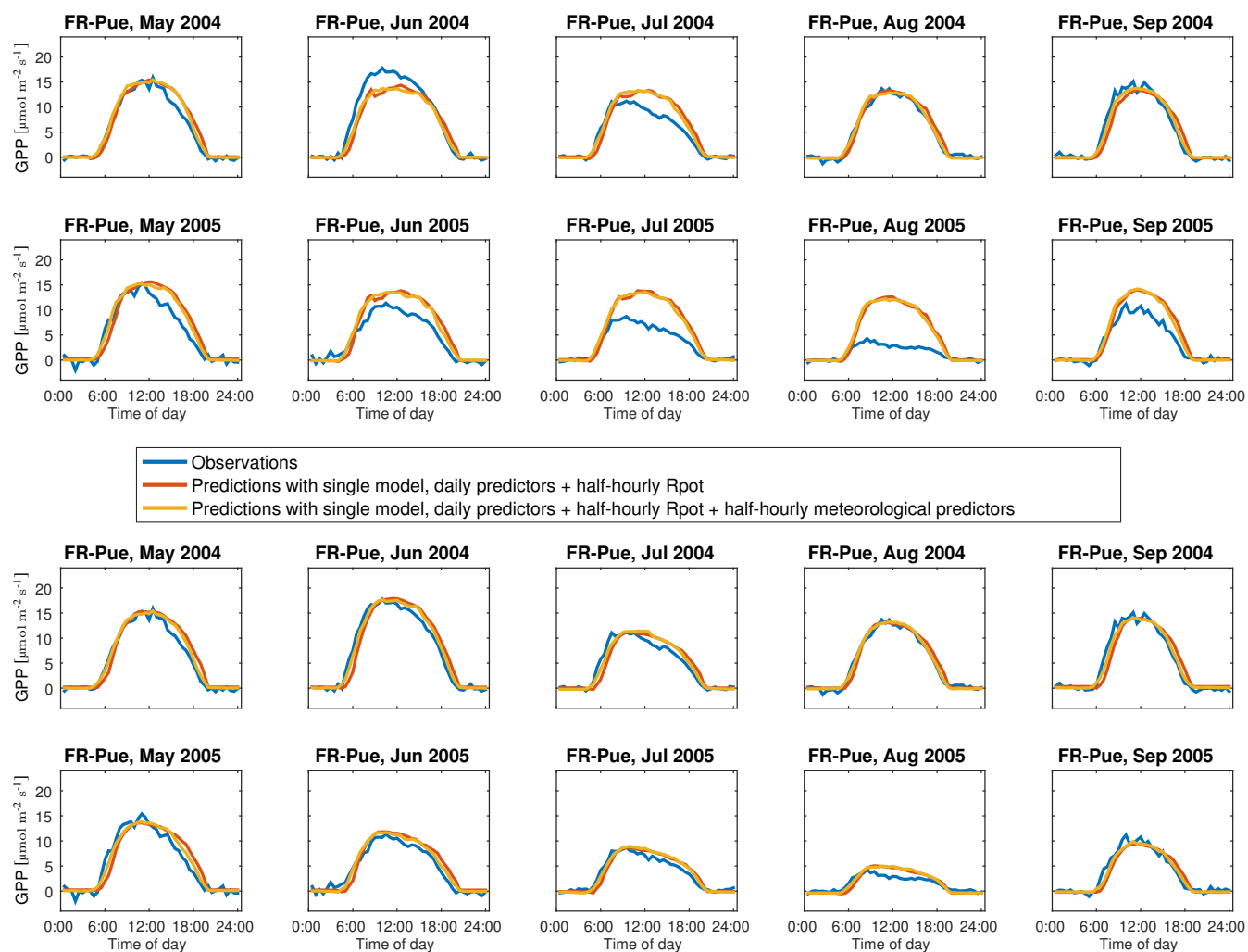


Figure 11. Improvements of the initial estimations (top rows) at FR-Pue can be observed when using daily GPP as an additional daily predictor if it would be available a priori (bottom rows). Hence, the problems with seasonal drought effects would be greatly reduced in the leave-one-site-out setup for every half hour of the diurnal cycle in case an accurate estimate of the daily average value is given.

5.5 Key insights from the cross-validation experiments

In this section, we want to shortly summarize the main findings from our cross-validation experiments. First, we have seen that it does not really matter which of the two proposed prediction approaches we are using, since prediction performances hardly differed between the single model and the individual model approach. We prefer to use the single model approach, because it seems to be more plausible from a physical perspective to make distinctions between half hours of a day by the information encoded in the predictor variables and half-hourly Rpot can always be used for this purpose. Second, including half-hourly meteorological information in the predictors clearly helps to improve the prediction performances for fluxes on the half-hourly



Table 3. Prediction performances in terms of modeling efficiency are estimated from the leave-one-site-out cross-validation experiments with the setup that has been used to compute the global half-hourly products for the four fluxes.

| | GPP | NEE | LE | H |
|--|------|------|------|------|
| Modeling efficiencies related to all individual half-hourly values | 0.67 | 0.61 | 0.72 | 0.77 |
| Modeling efficiencies related to monthly mean diurnal cycles | 0.78 | 0.76 | 0.83 | 0.86 |

scale. However, for monthly average diurnal cycles the differences are not so prominent anymore and estimations based on half-hourly Rpot as the only predictor at half-hourly resolution may be sufficient for analyzing the monthly patterns. Third, we have shown that the main problem for upscaling half-hourly fluxes is not the fact that we increase the temporal resolution, since we are able to reproduce the characteristic subdaily patterns. Moreover, we are lacking additional information in the predictors that encode site-specific characteristics as well as certain special conditions like seasonal droughts. This currently prevents us from getting the day-to-day variability and in the end also the interannual variability right. However, these are also problems that need to be tackled when an upscaling of carbon and energy fluxes at coarser time scales is considered (Tramontana et al., 2016). In the following section, we summarize the results from our cross-validation experiments for all the four fluxes (GPP, NEE, LE, H) with the setup that has been used to compute the global half-hourly data products.

5.6 The selected approach for computing the global products

While the previous sections validate the presented prediction approaches and point to potential problems in the estimation of half-hourly fluxes, we also decided to produce first global products of half-hourly GPP and NEE as well as LE and H that will be described in the next section. So far, the analyses have shown that best predictions are obtained by incorporating meteorological variables at half-hourly resolution, but such data products are not available at a global scale. Therefore, we have computed the global products only based on the daily predictors of the RS+METEO setup from Tramontana et al. (2016, Table 2) as well as half-hourly values of Rpot and its first temporal derivative. The used data sources have been described in Sect. 2 and the set of daily predictors varies between carbon and energy fluxes as indicated by Tramontana et al. (2016, Table 2).

Furthermore, we have decided to use the second prediction approach (Sect. 4.2) by learning one single regression model that is suitable for all half hours of the day. For us, it seems more natural from a physical perspective to distinguish between different half hours of a day by (potential) radiation as an additional variable rather than enforcing the distinction with individual models for each half hour as it is done in the first prediction approach (Sect. 4.1).

In Table 3, we report the corresponding prediction performances from the leave-one-site-out cross-validation experiments for this setup, i.e., for the selected set of predictor variables and the single regression model approach. The modeling efficiencies for both individual half-hourly values and monthly mean diurnal cycles are stated. Comparing these values, we observe that the accuracies for predicting energy fluxes are higher compared to those for the carbon fluxes. Half-hourly values of the sensible heat flux can be estimated best by achieving a modeling efficiency of 0.77 across all sites. On the other hand, net ecosystem exchange has only been predicted with a modeling efficiency of 0.61. This performance is lower compared to the



one for gross primary production (0.67), probably due to missing information in the predictor variables for the respiration component of NEE. For all the four fluxes, the modeling efficiencies are larger when comparing monthly average diurnal cycles of observations and predictions. The main reasons, as also mentioned in Sect. 5.3, are the reduction of noise as well as the smoothing of short-term fluctuations at subdaily scales due to the averaging. In the following section, we present the global half-hourly flux products that have been calculated with the upscaling approach and the setup of this section.

6 Global flux products with half-hourly resolution

For each of the four fluxes (GPP, NEE, LE, H), we have learned a single regression model for all half hours based on all available half-hourly values of the corresponding flux at the 222 FLUXNET sites listed in Appendix A, i.e., one regression model for GPP, one for NEE, one for LE, and one for H. These models are then used to compute half-hourly fluxes globally with 0.5° spatial resolution and continuously from 2001 (January 1st) to 2014 (December 31st) using global forcing data described in Sect. 2.2. As mentioned in the previous section, we have used the daily predictors of the RS+METEO setup from Tramontana et al. (2016, Table 2) as well as half-hourly values of Rpot and its first temporal derivative. Furthermore, it should be noted that the global products have been initially calculated such that they are tiled by PFT. The final flux for each point in space and time has then been determined as a weighted sum depending on the percentage of each PFT to be present in the corresponding grid cell. When looking at annual sums of the half-hourly data products, we observe that these sums are pretty constant among the different years for the individual fluxes. On average, we get 125.94 Pg C for GPP and -21.42 Pg C for NEE as well as 182.22 ZJ for LE and 144.79 ZJ for H.

In addition to the provided half-hourly data, we also offer derived products containing the monthly average diurnal cycles of the four fluxes for the 14 years that are covered by the half-hourly product. For the potential user of the data, it will be much more convenient to directly obtain the monthly average diurnal cycles compared to downloading the much larger half-hourly data product and computing the monthly averages afterwards. Furthermore, the monthly average diurnal cycles are more robust, which has also been shown by larger modeling efficiencies in the experimental evaluations, e.g., as listed in Table 1. Since only daily predictor variables and half-hourly Rpot are used to estimate the half-hourly fluxes, short-term fluctuations on subdaily scales due to cloud cover and other effects can not be captured by the current version of the product. Therefore, also day-to-day variations may not be represented accordingly. However, the averaging to create monthly mean diurnal cycles reduces the impact of these factors and additionally smoothens errors due to observation noise. As a consequence, we recommend to primarily use the monthly average diurnal cycles because of larger robustness and stability. In the following, we show some characteristics of the computed global flux products at half-hourly resolution, which can only be calculated due to the subdaily time scale.

6.1 Global maps and fingerprints

Cutouts of the global products are visualized in Fig. 12, where we have selected June 14th, 2014 at 1:00 pm UTC in the time domain. Global maps of GPP and NEE are shown in the top row of Fig. 12 and one can nicely distinguish daytime from

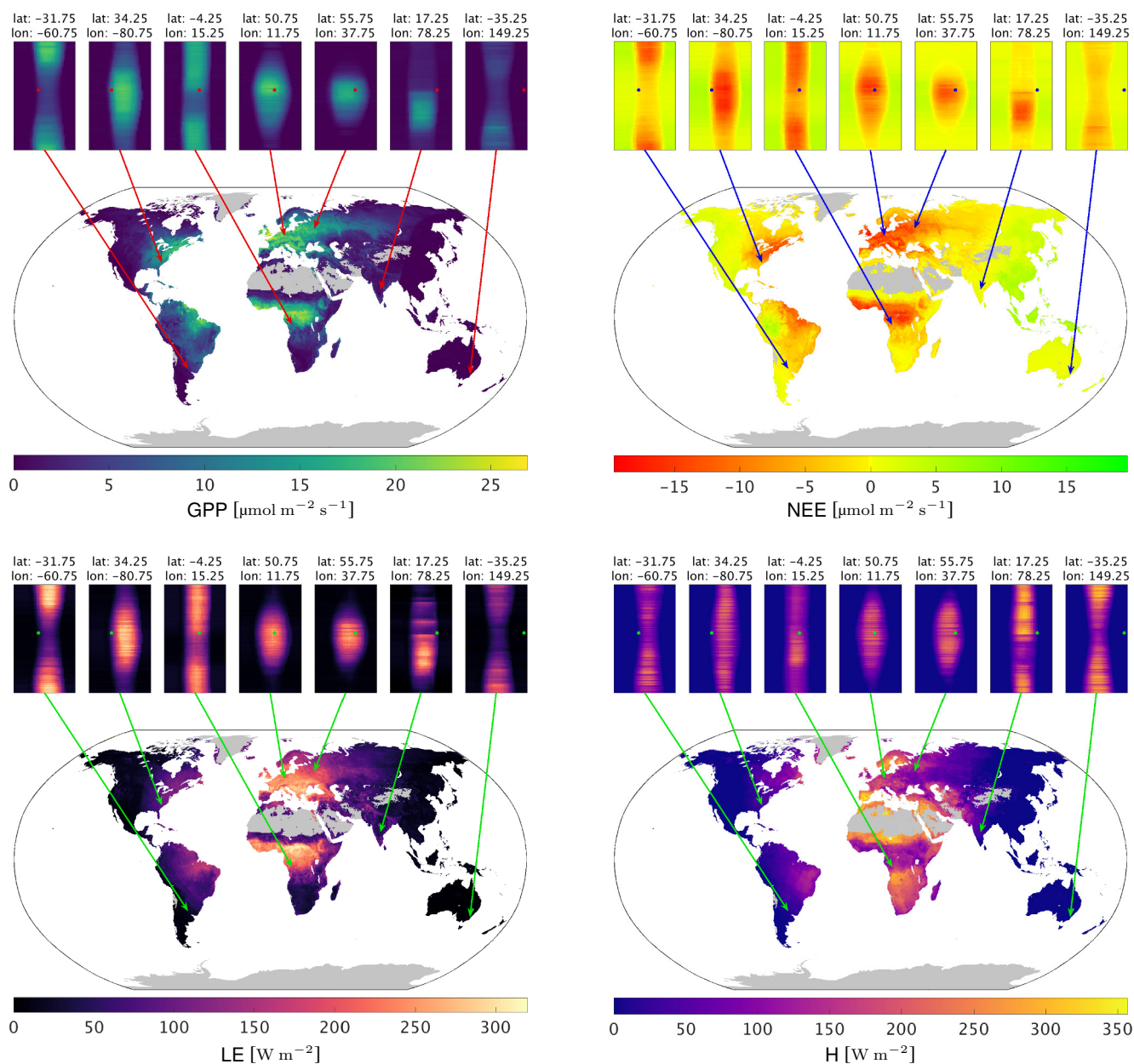


Figure 12. The global maps show estimated values for half-hourly GPP (top left), NEE (top right), LE (bottom left), and H (bottom right) on June 14th, 2014 at 1:00 pm UTC. In addition, fingerprints for selected grid cells are used to visualize half-hourly values for each day of the year. The dot in each fingerprint marks the value that is shown in the global map. Note that the fingerprints display different extensions of the growing season in different regions and the global maps allow for distinguishing between daytime (e.g., in Europe and Africa) and nighttime (e.g., in East Asia, Australia, and in the western parts of North America).

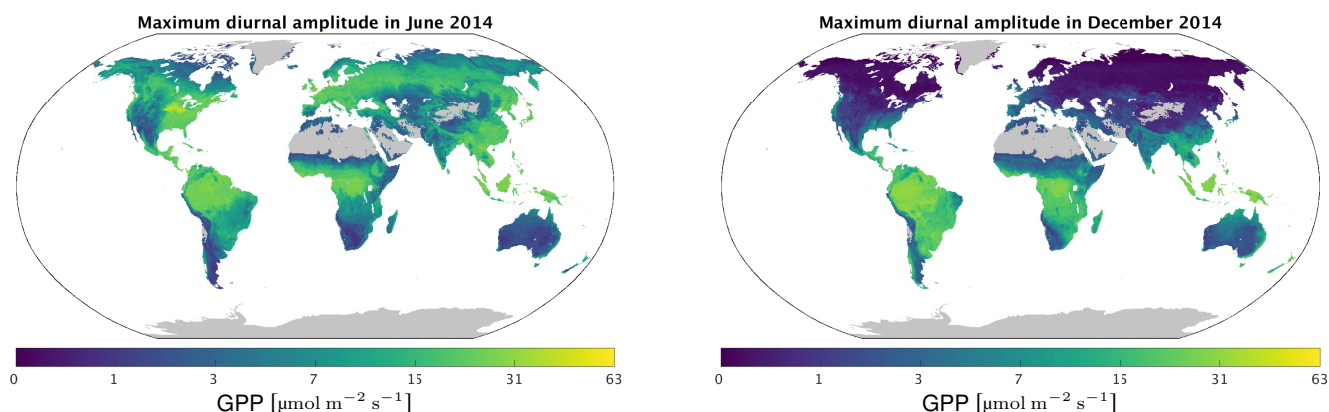


Figure 13. Maximum diurnal amplitudes of GPP within a month are shown for June 2014 (left) and December 2014 (right). Differences between summer and winter for both the northern and the southern hemisphere as well as (almost) constant productivity in tropical regions can be observed from both maps. Note the logarithmic color scale.

nighttime for individual regions around the world. Furthermore, selected locations are highlighted and all half-hourly values of the year 2014 for these grid cells are summarized in fingerprint plots, which allow for identifying different characteristics at the corresponding places due to the different patterns in these plots. The fingerprints provide a nice overview of the half-hourly fluxes over a whole year and different lengths of the growing season as well as varying lengths of the day (time between sunrise and sunset) can directly be observed. Corresponding maps for LE and H with fingerprint plots for the same locations are shown in the bottom row of Fig. 12. Larger values of LE compared to H at this specific point in time can be observed in Western, Central, and Eastern Europe as well as in the tropical regions of Africa, whereas it is vice versa at the Iberian Peninsula as well as in the northern and southern regions of Africa.

6.2 Maximum diurnal amplitudes within a month

Besides the fingerprint plots summarizing a whole year of half-hourly values for a specific location, it is also possible to compute diurnal amplitudes for each grid cell from the global products. We again picked GPP acting as an example for all the fluxes and determined maximum diurnal amplitudes within each month. In Fig. 13, the maximum diurnal amplitudes of GPP are visualized for June 2014 and December 2014 with a logarithmic color scale. These months have been chosen to indicate differences between summer and winter. The biosphere at the northern hemisphere is quite active in June showing large amplitudes, whereas maximum amplitudes are close to zero at most of the grid cells of the northern hemisphere in December. In the tropics, amplitudes of GPP do not vary much between June and December with values around $30 \mu\text{mol m}^{-2} \text{s}^{-1}$. As expected, the behavior at the southern hemisphere is opposite to the northern hemisphere, i.e., the productivity at the southern hemisphere is higher in December compared to June.

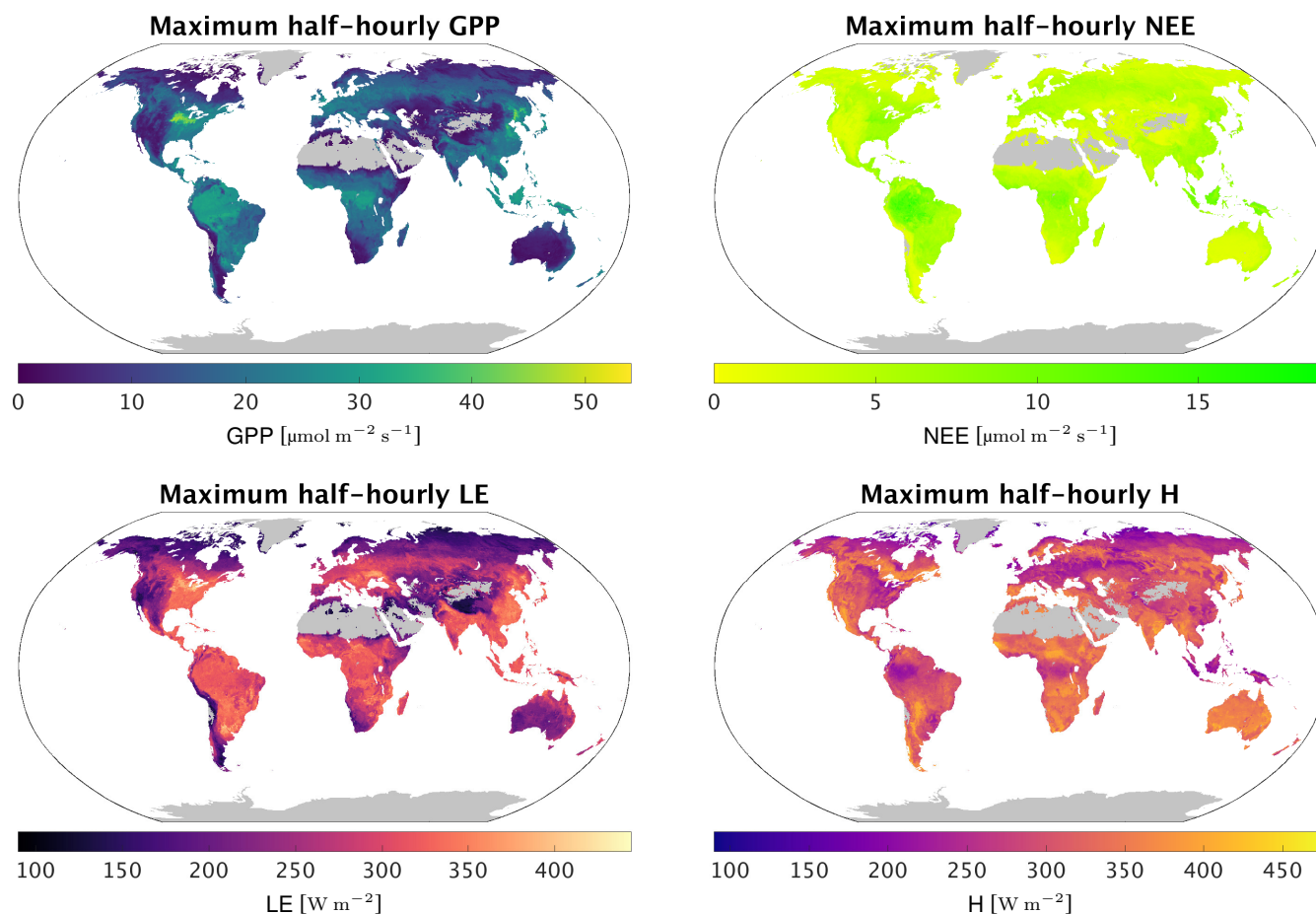


Figure 14. Maximum half-hourly values of GPP (top left), NEE (top right), LE (bottom left) and H (bottom right) during the years 2001 to 2014 are shown for each grid cell.

6.3 Maximum half-hourly fluxes

Finally, we have been interested in the maximum flux at each spatial position. These statistics have been calculated among all the years 2001 to 2014 to produce a single map of maximum half-hourly values for each flux. The results are shown in Fig. 14. Those maximum values denote the capabilities of each flux at each grid cell. For GPP, the hot spots with maximum capacities are in the corn belt of the USA, in Eastern China, as well as in the tropical regions. Largest values of NEE are obtained in the tropics as well, especially in the Amazon. Regarding the energy fluxes, it is not so easy to identify few single hot spot regions since large values of LE or H are widespread. However, distinct spatial patterns can be observed in all maps of the maximum fluxes.



7 Conclusions and future work

In this paper, we have shown how to perform an upscaling of half-hourly carbon and energy fluxes from local in situ measurements to global scale. We have introduced two general prediction approaches to estimate half-hourly values mainly from predictor variables at coarser temporal resolution. Since the problem has been formulated as a large-scale regression task, we have been working with random forest regression although other regression algorithms could be applied as well. Our prediction approaches have been validated by a set of cross-validation experiments employing a leave-one-site-out strategy for the FLUXNET towers that provide the observations. As a result of our analyses, we have presented global flux products at half-hourly temporal resolution for the years 2001 to 2014 covering four important variables: gross primary production, net ecosystem exchange, latent heat, and sensible heat. Detailed descriptions of the experimental setup for the cross-validation as well as for the computations that have led to the global products were given as well. Concerning the global data products, we have also shown derived statistics like maximum diurnal amplitudes of a month as well as maximum half-hourly fluxes at each spatial position. These properties can only be computed from data products with subdaily temporal resolution showing the benefits of our contributions.

In future work, we aim at improving the prediction performance of half-hourly fluxes in various ways. First, we plan to add additional sources of information to the drivers by extending the set of predictor variables to cover further relevant aspects for the individual fluxes like water availability or soil properties. This would allow for tackling difficult scenarios like seasonal droughts, where the current approaches have shown larger errors in the prediction. Second, we also want to incorporate the history of the predictor variables in order to account for lagged effects. So far, samples are treated independently in the prediction but their temporal context due to the time series characteristics may provide additional knowledge that can be exploited for the estimation of fluxes. Third, subdaily meteorology could be included in the calculations of the global products by incorporating new generation meteorological reanalysis data of ERA5 at hourly time scale that will be released in the near future or by exploiting observations from geostationary satellites. Of course, the global products will be updated if these additional ideas lead to better prediction performances. Another important aspect of future work is providing uncertainties for the flux estimations, which could be done by quantile regression approaches (Meinshausen, 2006).

8 Data availability

The calculated global half-hourly flux products are publicly available for free at <https://doi.org/10.17871/BACI.224> under the creative commons license CC BY 4.0⁴. More precisely, gridded products at 0.5° spatial resolution and half-hourly temporal resolution are provided covering GPP, NEE, LE, and H for the years 2001 to 2014. In addition, a derived product of monthly average diurnal cycles globally for these four fluxes and the given range of years at the same spatial resolution has been prepared for download as well. It is much more convenient for the potential user to just download the lightweight data of the monthly averages compared to getting the half-hourly data of much larger file size and then performing the averaging on the

⁴Please check <https://creativecommons.org/licenses/by/4.0/> as well as <https://creativecommons.org/licenses/by/4.0/legalcode>



local machine. As mentioned in the paper, the monthly average diurnal cycles are primarily recommended for usage, since this derived product turned out to be more robust.

Appendix A: FLUXNET sites

In this study, we made use of data from 222 FLUXNET sites that are equipped with eddy covariance towers. We would like to thank all the data providers of these sites for their hard work by collecting, filtering, and processing the raw data as well as for sharing the data with the community. In Table A1, we list the used FLUXNET sites together with corresponding references.

Table A1. This is a list of 222 FLUXNET sites from which we have used data in our study.

| SITE ID | NAME | COUNTRY | LAT | LON | YEARS | REFERENCE |
|---------|---|-----------|--------|---------|-----------|-------------------------------|
| AT-Neu | Neustift/Stubai Valley | Austria | 47.12 | 11.32 | 2002-2006 | Wohlfahrt et al. (2008b) |
| AU-Fog | Fogg Dam | Australia | -12.54 | 131.31 | 2006-2007 | Beringer et al. (2013) |
| AU-How | Howard Springs | Australia | -12.49 | 131.15 | 2001-2006 | Beringer et al. (2007) |
| AU-Tum | Tumbarumba | Australia | -35.66 | 148.15 | 2001-2006 | Gorsel et al. (2007) |
| AU-Wac | Wallaby Creek | Australia | -37.43 | 145.19 | 2005-2007 | Kilinc et al. (2012) |
| BE-Bra | Brasschaat (De Inslag Forest) | Belgium | 51.31 | 4.52 | 1997-2006 | Gielen et al. (2010) |
| BE-Jal | Jalhay | Belgium | 50.56 | 6.07 | 2006-2006 | Broquet et al. (2013) |
| BE-Lon | Lonzee | Belgium | 50.55 | 4.74 | 2004-2006 | Moureaux et al. (2006) |
| BE-Vie | Vielsalm | Belgium | 50.31 | 6.00 | 1996-2006 | Aubinet et al. (2001) |
| BR-Ban | Ecotone Bananal Island | Brazil | -9.82 | -50.16 | 2003-2006 | Borma et al. (2009) |
| BR-Cax | Caxiuana Forest - Almeirim | Brazil | -1.72 | -51.46 | 1999-2003 | Restrepo-Coupe et al. (2013) |
| BR-Ji2 | Rond. - Rebio Jaru Ji Parana - Tower A | Brazil | -10.08 | -61.93 | 2000-2002 | Restrepo-Coupe et al. (2013) |
| BR-Ma2 | Manaus - ZF2 K34 | Brazil | -2.61 | -60.21 | 1999-2006 | Restrepo-Coupe et al. (2013) |
| BR-Sa1 | Santarem - Km67 - Primary Forest | Brazil | -2.86 | -54.96 | 2002-2004 | Restrepo-Coupe et al. (2013) |
| BR-Sa2 | Santarem - Km77 - Pasture | Brazil | -3.01 | -54.54 | 2001-2002 | Restrepo-Coupe et al. (2013) |
| BR-Sa3 | Santarem - Km83 - Logged Forest | Brazil | -3.02 | -54.97 | 2000-2003 | Restrepo-Coupe et al. (2013) |
| BR-Sp1 | Sao Paulo Cerrado | Brazil | -21.62 | -47.65 | 2001-2002 | Restrepo-Coupe et al. (2013) |
| BW-Ghg | Ghanzi Grass Site | Botswana | -21.51 | 21.74 | 2003-2003 | Williams and Albertson (2004) |
| BW-Ghm | Ghanzi Mixed Site | Botswana | -21.20 | 21.75 | 2003-2003 | Williams and Albertson (2004) |
| BW-Ma1 | Maun - Mopane Woodland | Botswana | -19.92 | 23.56 | 1999-2001 | Arneth et al. (2006) |
| CA-Ca1 | BC - Campbell River - Mature Forest Site | Canada | 49.87 | -125.33 | 1997-2005 | Humphreys et al. (2006) |
| CA-Ca2 | BC - Campbell River - Clearcut Site | Canada | 49.87 | -125.29 | 2000-2005 | Humphreys et al. (2006) |
| CA-Ca3 | BC - Campbell River - Young Plantation Site | Canada | 49.53 | -124.90 | 2001-2005 | Humphreys et al. (2006) |
| CA-Gro | ON - Groundhog River - Boreal Mixed Wood | Canada | 48.22 | -82.16 | 2003-2005 | McCaughy et al. (2006) |
| CA-Let | AB - Lethbridge - Mixed Grass Prairie | Canada | 49.71 | -112.94 | 1998-2005 | Flanagan et al. (2002) |
| : | : | : | : | : | : | : |



| SITE ID | NAME | COUNTRY | LAT | LON | YEARS | REFERENCE |
|---------|--|---------------|-------|---------|-----------|---------------------------------|
| CA-Man | MB - Manitoba - Northern Old Black Spruce - BOREAS Northern Study Area | Canada | 55.88 | -98.48 | 1994-2003 | Dunn et al. (2007) |
| CA-Mer | ON - Eastern Peatland - Mer Bleue | Canada | 45.41 | -75.52 | 1998-2005 | Lafleur et al. (2003) |
| CA-NS1 | UCI - 1850 burn site | Canada | 55.88 | -98.48 | 2002-2005 | Goulden et al. (2006) |
| CA-NS2 | UCI - 1930 burn site | Canada | 55.91 | -98.52 | 2001-2005 | Goulden et al. (2006) |
| CA-NS3 | UCI - 1964 burn site | Canada | 55.91 | -98.38 | 2001-2005 | Goulden et al. (2006) |
| CA-NS4 | UCI - 1964 burn site wet | Canada | 55.91 | -98.38 | 2002-2004 | Goulden et al. (2006) |
| CA-NS5 | UCI - 1981 burn site | Canada | 55.86 | -98.49 | 2001-2005 | Goulden et al. (2006) |
| CA-NS6 | UCI - 1989 burn site | Canada | 55.92 | -98.96 | 2001-2005 | Goulden et al. (2006) |
| CA-NS7 | UCI - 1998 burn site | Canada | 56.64 | -99.95 | 2002-2005 | Goulden et al. (2006) |
| CA-Oas | SK - SSA Old Aspen | Canada | 53.63 | -106.20 | 1997-2005 | Amiro et al. (2006) |
| CA-Obs | SK - SSA Old Black Spruce | Canada | 53.99 | -105.12 | 1999-2005 | Amiro et al. (2006) |
| CA-Ojp | SK - SSA Old Jack Pine | Canada | 53.92 | -104.69 | 1999-2005 | Amiro et al. (2006) |
| CA-Qcu | QC - Boreal Cutover Site | Canada | 49.27 | -74.04 | 2001-2006 | Giasson et al. (2006) |
| CA-Qfo | QC - Mature Boreal Forest Site | Canada | 49.69 | -74.34 | 2003-2006 | Bergeron et al. (2007) |
| CA-SF1 | SK - Fire 1977 | Canada | 54.49 | -105.82 | 2003-2005 | Mkhabela et al. (2009) |
| CA-SF2 | SK - Fire 1989 | Canada | 54.25 | -105.88 | 2003-2005 | Mkhabela et al. (2009) |
| CA-SF3 | SK - Fire 1998 | Canada | 54.09 | -106.00 | 2003-2005 | Mkhabela et al. (2009) |
| CA-SJ1 | SK - 1994 Harv. Jack Pine | Canada | 53.91 | -104.66 | 2001-2005 | Mkhabela et al. (2009) |
| CA-SJ2 | SK - 2002 Harvested Jack Pine | Canada | 53.94 | -104.65 | 2003-2005 | Mkhabela et al. (2009) |
| CA-SJ3 | SK - SSA 1975 Harv. Yng Jack Pine | Canada | 53.88 | -104.64 | 2004-2005 | Mkhabela et al. (2009) |
| CA-TP1 | ON - Turkey Point Seedling White Pine | Canada | 42.66 | -80.56 | 2004-2005 | Peichl et al. (2010) |
| CA-TP2 | ON - Turkey Point Young White Pine | Canada | 42.77 | -80.46 | 2003-2005 | Arain and Restrepo-Coupe (2005) |
| CA-TP3 | ON - Turkey Point Middle-aged White Pine | Canada | 42.71 | -80.35 | 2003-2005 | Peichl et al. (2010) |
| CA-TP4 | ON - Turkey Point Mature White Pine | Canada | 42.71 | -80.36 | 2003-2005 | Arain and Restrepo-Coupe (2005) |
| CA-WP1 | AB - Western Peatland - LaBiche River - Black Spruce/Larch Fen | Canada | 54.95 | -112.47 | 2003-2005 | Syed et al. (2006) |
| CA-WP2 | AB - Western Peatland - Sphagnum moss - Poor Fen | Canada | 55.54 | -112.33 | 2004-2004 | Glenn et al. (2006) |
| CG-Tch | Tchizalamou | Rep. of Congo | -4.29 | 11.66 | 2006-2006 | Merbold et al. (2009) |
| CH-Oe1 | Oensingen1 grass | Switzerland | 47.29 | 7.73 | 2002-2006 | Ammann et al. (2007) |
| CH-Oe2 | Oensingen2 crop | Switzerland | 47.29 | 7.73 | 2005-2005 | Kutsch et al. (2010) |
| CN-Bed | Beijing Daxing | China | 39.53 | 116.25 | 2005-2006 | Liu et al. (2009) |
| CN-Cha | Changbaishan | China | 42.40 | 128.10 | 2003-2003 | Guan et al. (2006) |
| CN-Do1 | Dongtan 1 | China | 31.52 | 121.96 | 2005-2005 | Yan et al. (2008) |
| CN-Do2 | Dongtan 2 | China | 31.58 | 121.90 | 2005-2005 | Yan et al. (2008) |
| CN-Do3 | Dongtan 3 | China | 31.52 | 121.97 | 2005-2005 | Yan et al. (2008) |
| CN-Du1 | Duolun_cropland | China | 42.05 | 116.67 | 2005-2006 | Zhang et al. (2007) |
| CN-Du2 | Duolun_grassland | China | 42.05 | 116.28 | 2006-2006 | Zhang et al. (2007) |
| : | : | : | : | : | : | : |



| SITE ID | NAME | COUNTRY | LAT | LON | YEARS | REFERENCE |
|---------|--------------------------------------|---------------|-------|--------|-----------|-----------------------------|
| CN-Ku1 | Kubuqi_populus forest | China | 40.54 | 108.69 | 2005-2006 | Wilske et al. (2009) |
| CN-Ku2 | Kubuqi_shrubland | China | 40.38 | 108.55 | 2006-2006 | Wilske et al. (2009) |
| CN-Xi1 | Xilinhot fenced steppe (X06) | China | 43.55 | 116.68 | 2006-2006 | Chen et al. (2009) |
| CN-Xi2 | Xilinhot grassland site (X03) | China | 43.55 | 116.67 | 2006-2006 | Chen et al. (2009) |
| CZ-BK1 | Bily Kriz - Beskidy Mountains | Czech Rep. | 49.50 | 18.54 | 2000-2006 | Acosta et al. (2008) |
| CZ-BK2 | Bily Kriz - grassland | Czech Rep. | 49.49 | 18.54 | 2004-2006 | Marek et al. (2011) |
| CZ-wet | CZECHWET - Trebon | Czech Rep. | 49.03 | 14.77 | 2006-2006 | Marek et al. (2011) |
| DE-Geb | Gebesee | Germany | 51.10 | 10.91 | 2004-2006 | Anthoni et al. (2004) |
| DE-Gri | Grillenburg - grass station | Germany | 50.95 | 13.51 | 2005-2006 | Owen et al. (2007) |
| DE-Hai | Hainich | Germany | 51.08 | 10.45 | 2000-2006 | Knohl et al. (2003) |
| DE-Har | Hartheim | Germany | 47.93 | 7.60 | 2005-2006 | Schindler et al. (2006) |
| DE-Kli | Klingenberg - cropland | Germany | 50.89 | 13.52 | 2004-2006 | Owen et al. (2007) |
| DE-Meh | Mehrstedt 1 | Germany | 51.28 | 10.66 | 2003-2006 | Don et al. (2009) |
| DE-Tha | Anchor Station Tharandt - old spruce | Germany | 50.96 | 13.57 | 1996-2006 | Bernhofer et al. (2003) |
| DE-Wet | Wetzstein | Germany | 50.45 | 11.46 | 2002-2006 | Anthoni et al. (2004) |
| DK-Fou | Foulum | Denmark | 56.48 | 9.59 | 2005-2005 | Soegaard et al. (2003) |
| DK-Lva | Lille Valby (Rimi) | Denmark | 55.68 | 12.08 | 2005-2006 | Soussana et al. (2007) |
| DK-Ris | Risbyholm | Denmark | 55.53 | 12.10 | 2004-2005 | Houborg and Soegaard (2004) |
| DK-Sor | Soroe | Denmark | 55.49 | 11.65 | 1996-2006 | Pilegaard et al. (2001) |
| ES-ES1 | El Saler | Spain | 39.35 | -0.32 | 1999-2006 | Carvalhais et al. (2008) |
| ES-ES2 | El Saler - Sueca | Spain | 39.28 | -0.32 | 2004-2006 | Kutsch et al. (2010) |
| ES-LMa | Las Majadas del Tietar | Spain | 39.94 | -5.77 | 2004-2006 | Perez-Priego et al. (2017) |
| ES-VDA | Vall d'Alinya | Spain | 42.15 | 1.45 | 2004-2006 | Gilmanov et al. (2007) |
| FI-Hyy | Hyytiala | Finland | 61.85 | 24.29 | 1996-2006 | Suni et al. (2003) |
| FI-Kaa | Kaamanen wetland | Finland | 69.14 | 27.30 | 2000-2006 | Aurela et al. (2004) |
| FI-Sii | Siikaneva fen | Finland | 61.83 | 24.19 | 2004-2005 | Haapanala et al. (2006) |
| FI-Sod | Sodankyla | Finland | 67.36 | 26.64 | 2000-2006 | Thum et al. (2007) |
| FR-Aur | Aurade | France | 43.55 | 1.11 | 2005-2005 | Béziat et al. (2009) |
| FR-Fon | Fontainebleau | France | 48.48 | 2.78 | 2005-2006 | Delpierre et al. (2016) |
| FR-Gri | Grignon (after 6/5/2005) | France | 48.84 | 1.95 | 2005-2006 | Loubet et al. (2011) |
| FR-Hes | Hesse Forest - Sarrebourg | France | 48.67 | 7.06 | 1997-2006 | Granier et al. (2000) |
| FR-LBr | Le Bray (after 6/28/1998) | France | 44.72 | -0.77 | 1996-2006 | Berbigier et al. (2001) |
| FR-Lam | Lamasquere | France | 43.49 | 1.24 | 2005-2005 | Béziat et al. (2009) |
| FR-Lq1 | Laqueuille | France | 45.64 | 2.74 | 2004-2006 | Allard et al. (2007) |
| FR-Lq2 | Laqueuille extensive | France | 45.64 | 2.74 | 2004-2006 | Allard et al. (2007) |
| FR-Pue | Puechabon | France | 43.74 | 3.60 | 2000-2006 | Allard et al. (2008) |
| GF-Guy | Guyaflox | French Guyana | 5.28 | -52.93 | 2004-2006 | Bonal et al. (2008) |
| HU-Bug | Bugacpuszta | Hungary | 46.69 | 19.60 | 2002-2006 | Nagy et al. (2007) |
| ⋮ | ⋮ | ⋮ | ⋮ | ⋮ | ⋮ | ⋮ |



| SITE ID | NAME | COUNTRY | LAT | LON | YEARS | REFERENCE |
|---------|--|-------------|-------|--------|-----------|------------------------------|
| HU-Mat | Matra | Hungary | 47.85 | 19.73 | 2004-2006 | Wohlfahrt et al. (2008a) |
| ID-Pag | Palangkaraya | Indonesia | -2.35 | 114.04 | 2002-2003 | Hirano et al. (2007) |
| IE-Dri | Dripsey | Ireland | 51.99 | -8.75 | 2003-2005 | Peichl et al. (2011) |
| IL-Yat | Yatir | Israel | 31.34 | 35.05 | 2001-2006 | Grünzweig et al. (2003) |
| IT-Amp | Amplero | Italy | 41.90 | 13.61 | 2002-2006 | Wohlfahrt et al. (2008a) |
| IT-BCi | Borgo Cioffi | Italy | 40.52 | 14.96 | 2004-2006 | Kutsch et al. (2010) |
| IT-Bon | Bonis | Italy | 39.48 | 16.53 | 2006-2006 | Balzarolo et al. (2011) |
| IT-Col | Collelongo- Selva Piana | Italy | 41.85 | 13.59 | 1996-2006 | Valentini et al. (1996) |
| IT-Cpz | Castelporziano | Italy | 41.71 | 12.38 | 1997-2006 | Garbulsky et al. (2008) |
| IT-LMa | La Mandria | Italy | 45.58 | 7.15 | 2003-2006 | Broquet et al. (2013) |
| IT-Lav | Lavarone (after 3/2002) | Italy | 45.96 | 11.28 | 2000-2006 | Cescatti and Marcolla (2004) |
| IT-MBo | Monte Bondone | Italy | 46.02 | 11.05 | 2003-2006 | Marcolla and Cescatti (2005) |
| IT-Mal | Malga Arpaco | Italy | 46.12 | 11.70 | 2003-2006 | Gilmanov et al. (2007) |
| IT-Noe | Sardinia/Arca di Noe | Italy | 40.61 | 8.15 | 2004-2006 | Spano et al. (2009) |
| IT-Non | Nonantola | Italy | 44.69 | 11.09 | 2001-2006 | Reichstein et al. (2003) |
| IT-PT1 | Zerbolo - Parco Ticino - Canarazzo | Italy | 45.20 | 9.06 | 2002-2004 | Migliavacca et al. (2009) |
| IT-Pia | Island of Pianosa | Italy | 42.58 | 10.08 | 2002-2005 | Vaccari et al. (2012) |
| IT-Ren | Renon/Ritten (Bolzano) | Italy | 46.59 | 11.43 | 1999-2006 | Marcolla et al. (2005) |
| IT-Ro1 | Roccarespampani 1 | Italy | 42.41 | 11.93 | 2000-2006 | Rey et al. (2002) |
| IT-Ro2 | Roccarespampani 2 | Italy | 42.39 | 11.92 | 2002-2006 | Tedeschi et al. (2006) |
| IT-SRo | San Rossore | Italy | 43.73 | 10.28 | 1999-2006 | Chiesi et al. (2005) |
| JP-Mas | Mase paddy flux site - Tsukuba - Japan (MSE) | Japan | 36.05 | 140.03 | 2002-2003 | Saito et al. (2005) |
| JP-Tak | Takayama | Japan | 36.15 | 137.42 | 1999-2004 | Yamamoto et al. (1999) |
| JP-Tom | Tomakomai National Forest | Japan | 42.74 | 141.51 | 2001-2003 | Hirano et al. (2003) |
| KR-Hnm | Haenam | Korea | 34.55 | 126.57 | 2004-2006 | Lee et al. (2003) |
| KR-Kw1 | Gwangneung Coniferous Forest | Korea | 37.75 | 127.16 | 2004-2007 | Hong et al. (2008) |
| NL-Ca1 | Cabauw | Netherlands | 51.97 | 4.93 | 2003-2006 | Jacobs et al. (2007) |
| NL-Haa | Haastrecht | Netherlands | 52.00 | 4.81 | 2003-2004 | Jacobs et al. (2007) |
| NL-Hor | Horstermeer | Netherlands | 52.03 | 5.07 | 2004-2006 | Hendriks et al. (2007) |
| NL-Lan | Langerak | Netherlands | 51.95 | 4.90 | 2005-2006 | Moors et al. (2010) |
| NL-Loo | Loobos | Netherlands | 52.17 | 5.74 | 1996-2006 | Dolman et al. (2002) |
| NL-Lut | Lutjewad | Netherlands | 53.40 | 6.36 | 2006-2006 | Moors et al. (2010) |
| NL-Mol | Molenweg | Netherlands | 51.65 | 4.64 | 2005-2006 | Moors et al. (2010) |
| PT-Esp | Espirra | Portugal | 38.64 | -8.60 | 2002-2006 | Rodrigues et al. (2011) |
| PT-Mi1 | Mitra (Evora) | Portugal | 38.54 | -8.00 | 2003-2005 | Pereira et al. (2007) |
| PT-Mi2 | Mitra IV Tojal | Portugal | 38.48 | -8.02 | 2004-2006 | Pereira et al. (2007) |
| RU-Che | Cherskii | Russia | 68.61 | 161.34 | 2002-2005 | Corradi et al. (2005) |
| RU-Cok | Chokurdakh | Russia | 70.62 | 147.88 | 2003-2005 | Molen et al. (2007) |
| ⋮ | ⋮ | ⋮ | ⋮ | ⋮ | ⋮ | ⋮ |



| SITE ID | NAME | COUNTRY | LAT | LON | YEARS | REFERENCE |
|---------|--|-------------|-------|---------|-----------|----------------------------------|
| RU-Fyo | Fyodorovskoye wet spruce stand | Russia | 56.46 | 32.92 | 1998-2006 | Kurbatova et al. (2008) |
| RU-Ha1 | Ubs Nur - Hakasija - grassland | Russia | 54.73 | 90.00 | 2002-2004 | Belelli Marchesini et al. (2007) |
| RU-Ha2 | Ubs Nur - Hakasija - recovering grassland | Russia | 54.77 | 89.96 | 2002-2003 | Belelli Marchesini et al. (2007) |
| RU-Ha3 | Ubs Nur - Hakasija - Site 3 | Russia | 54.70 | 89.08 | 2004-2004 | Belelli Marchesini et al. (2007) |
| RU-Zot | Zotino | Russia | 60.80 | 89.35 | 2002-2004 | Kurbatova et al. (2002) |
| SE-Abi | Abisko | Sweden | 68.36 | 18.79 | 2005-2005 | Christensen et al. (2007) |
| SE-Deg | Degero | Sweden | 64.18 | 19.55 | 2001-2005 | Sagerfors et al. (2008) |
| SE-Nor | Norunda | Sweden | 60.09 | 17.48 | 1996-2005 | Lagergren et al. (2008) |
| SE-Sk1 | Skyttorp1 young | Sweden | 60.13 | 17.92 | 2005-2005 | Launiainen et al. (2016) |
| SE-Sk2 | Skyttorp | Sweden | 60.13 | 17.84 | 2004-2005 | Launiainen et al. (2016) |
| SE-St1 | Stordalen Forest- Mountain Birch | Sweden | 68.37 | 19.05 | 2006-2006 | Christensen et al. (2012) |
| SK-Tat | Tatra | Slovak Rep. | 49.12 | 20.16 | 2005-2005 | Matese et al. (2008) |
| UK-AMo | Auchencorth Moss - Scotland | UK | 55.79 | -3.24 | 2005-2005 | Drewer et al. (2010) |
| UK-EBu | Easter Bush- Scotland | UK | 55.87 | -3.21 | 2004-2006 | Famulari et al. (2004) |
| UK-ESa | East Saltoun | UK | 55.91 | -2.86 | 2003-2005 | Smallman et al. (2013) |
| UK-Gri | Griffin - Aberfeldy - Scotland | UK | 56.61 | -3.80 | 1997-2006 | Sturm et al. (2005) |
| UK-Ham | Hampshire | UK | 51.12 | -0.86 | 2004-2005 | Wilkinson et al. (2012) |
| UK-Her | Hertfordshire | UK | 51.78 | -0.48 | 2006-2006 | Broquet et al. (2013) |
| UK-Tad | Tadham Moor | UK | 51.21 | -2.83 | 2001-2001 | Harding and Lloyd (2008) |
| US-ARM | OK - ARM Southern Great Plains site - Lamont | USA | 36.61 | -97.49 | 2003-2006 | Fischer et al. (2007) |
| US-Aud | AZ - Audubon Research Ranch | USA | 31.59 | -110.51 | 2002-2006 | Krishnan et al. (2012) |
| US-Bar | NH - Bartlett Experimental Forest | USA | 44.06 | -71.29 | 2004-2005 | Jenkins et al. (2007) |
| US-Bkg | SD - Brookings | USA | 44.35 | -96.84 | 2004-2006 | Yang et al. (2017) |
| US-Blo | CA - Blodgett Forest | USA | 38.90 | -120.63 | 1997-2006 | Goldstein et al. (2000) |
| US-Bn1 | AK - Bonanza Creek; 1920 Burn site near Delta Junction | USA | 63.92 | -145.38 | 2003-2003 | Liu et al. (2005) |
| US-Bn2 | AK - Bonanza Creek; 1987 Burn site near Delta Junction | USA | 63.92 | -145.38 | 2003-2003 | Liu et al. (2005) |
| US-Bn3 | AK - Bonanza Creek; 1999 Burn site near Delta Junction | USA | 63.92 | -145.74 | 2003-2003 | Liu et al. (2005) |
| US-Bo1 | IL - Bondville | USA | 40.01 | -88.29 | 1996-2007 | Meyers and Hollinger (2004) |
| US-Bo2 | IL - Bondville (companion site) | USA | 40.01 | -88.29 | 2004-2006 | Meyers and Hollinger (2004) |
| US-Brw | AK - Barrow | USA | 71.32 | -156.63 | 1998-2002 | Kwon et al. (2006) |
| US-CaV | WV - Canaan Valley | USA | 39.06 | -79.42 | 2004-2005 | Wang et al. (2008) |
| US-Dk1 | NC - Duke Forest - open field | USA | 35.97 | -79.09 | 2001-2005 | Stoy et al. (2006) |
| US-Dk2 | NC - Duke Forest - hardwoods | USA | 35.97 | -79.10 | 2003-2005 | Stoy et al. (2006) |
| US-Dk3 | NC - Duke Forest - loblolly pine | USA | 35.98 | -79.09 | 2001-2005 | Stoy et al. (2006) |
| US-FPe | MT - Fort Peck | USA | 48.31 | -105.10 | 2000-2006 | Wang et al. (2008) |
| ⋮ | ⋮ | ⋮ | ⋮ | ⋮ | ⋮ | ⋮ |



| SITE ID | NAME | COUNTRY | LAT | Lon | YEARS | REFERENCE |
|---------|--|---------|-------|---------|-----------|-------------------------------|
| US-FR2 | TX - Freeman Ranch - Mesquite Juniper | USA | 29.95 | -98.00 | 2004-2006 | Heilman et al. (2014) |
| US-Fuf | AZ - Flagstaff - Unmanaged Forest | USA | 35.09 | -111.76 | 2005-2006 | Dore et al. (2008) |
| US-Fwf | AZ - Flagstaff - Wildfire | USA | 35.45 | -111.77 | 2005-2006 | Dore et al. (2008) |
| US-Goo | MS - Goodwin Creek | USA | 34.25 | -89.87 | 2002-2006 | Wilson and Meyers (2007) |
| US-Ha1 | MA - Harvard Forest EMS Tower (HFR1) | USA | 42.54 | -72.17 | 1991-2006 | Urbanski et al. (2007) |
| US-Ha2 | MA - Harvard Forest Hemlock Site | USA | 42.54 | -72.18 | 2004-2004 | Hadley et al. (2009) |
| US-Ho1 | ME - Howland Forest (main tower) | USA | 45.20 | -68.74 | 1996-2004 | Hollinger et al. (2004) |
| US-Ho2 | ME - Howland Forest (west tower) | USA | 45.21 | -68.75 | 1999-2004 | Hollinger et al. (2004) |
| US-IB1 | IL - Fermi National Accelerator Lab - Batavia (Agricultural site) | USA | 41.86 | -88.22 | 2005-2007 | Allison et al. (2007) |
| US-IB2 | IL - Fermi National Accelerator Lab - Batavia (Prairie site) | USA | 41.84 | -88.24 | 2004-2007 | Gomez-Casanovas et al. (2012) |
| US-Ivo | AK - Ivotuk | USA | 68.49 | -155.75 | 2003-2006 | Davidson et al. (2016) |
| US-KS1 | FL - Kennedy Space Center (slash pine) | USA | 28.46 | -80.67 | 2002-2002 | Bracho et al. (2008) |
| US-KS2 | FL - Kennedy Space Center (scrub oak) | USA | 28.61 | -80.67 | 2000-2006 | Powell et al. (2006) |
| US-LPH | MA - Little Prospect Hill | USA | 42.54 | -72.18 | 2002-2005 | Hadley et al. (2008) |
| US-Los | WI - Lost Creek | USA | 46.08 | -89.98 | 2001-2005 | Sulman et al. (2009) |
| US-MMS | IN - Morgan Monroe State Forest | USA | 39.32 | -86.41 | 1999-2005 | Schmid et al. (2000) |
| US-MOz | MO - Missouri Ozark Site | USA | 38.74 | -92.20 | 2004-2006 | Gu et al. (2006) |
| US-Me1 | OR - Metolius - Eyerly burn | USA | 44.58 | -121.50 | 2004-2005 | Irvine et al. (2007) |
| US-Me2 | OR - Metolius - intermediate aged ponderosa pine | USA | 44.45 | -121.56 | 2003-2005 | Vickers et al. (2009) |
| US-Me3 | OR - Metolius - second young aged pine | USA | 44.32 | -121.61 | 2004-2005 | Vickers et al. (2009) |
| US-Me4 | OR - Metolius - old aged ponderosa pine | USA | 44.50 | -121.62 | 1996-2000 | Law et al. (2001) |
| US-NC1 | NC - NC_Clearcut | USA | 35.81 | -76.71 | 2005-2006 | Noormets et al. (2012) |
| US-NC2 | NC - NC_Loblolly Plantation | USA | 35.80 | -76.67 | 2005-2006 | Noormets et al. (2012) |
| US-NR1 | CO - Niwot Ridge Forest (LTER NWT1) | USA | 40.03 | -105.55 | 1999-2003 | Monson et al. (2002) |
| US-Ne1 | NE - Mead - irrigated continuous maize site | USA | 41.17 | -96.48 | 2001-2005 | Verma et al. (2005) |
| US-Ne2 | NE - Mead - irrigated maize-soybean rotation site | USA | 41.16 | -96.47 | 2001-2005 | Verma et al. (2005) |
| US-Ne3 | NE - Mead - rainfed maize-soybean rotation site | USA | 41.18 | -96.44 | 2001-2005 | Verma et al. (2005) |
| US-PFa | WI - Park Falls/WLEF | USA | 45.95 | -90.27 | 1996-2003 | Desai et al. (2015) |
| US-SO2 | CA - Sky Oaks - Old Stand | USA | 33.37 | -116.62 | 1997-2006 | Lipson et al. (2005) |
| US-SO3 | CA - Sky Oaks - Young Stand | USA | 33.38 | -116.62 | 1997-2006 | Lipson et al. (2005) |
| US-SO4 | CA - Sky Oaks - New Stand | USA | 33.38 | -116.64 | 2004-2006 | Lipson et al. (2005) |
| US-SP1 | FL - Slashpine - Austin Cary - 65yrs nat regen | USA | 29.74 | -82.22 | 2000-2005 | Powell et al. (2008) |
| US-SP2 | FL - Slashpine - Mize-clearcut - 3yrs regen | USA | 29.76 | -82.24 | 1998-2004 | Bracho et al. (2012) |
| US-SP3 | FL - Slashpine - Donaldson-mid-rot - 12yrs | USA | 29.75 | -82.16 | 1999-2004 | Bracho et al. (2012) |
| US-SRM | AZ - Santa Rita Mesquite | USA | 31.82 | -110.87 | 2004-2006 | Scott et al. (2009) |
| ⋮ | ⋮ | ⋮ | ⋮ | ⋮ | ⋮ | ⋮ |



| SITE ID | NAME | COUNTRY | LAT | LON | YEARS | REFERENCE |
|---------|--|--------------|--------|---------|-----------|------------------------|
| US-Syv | MI - Sylvania Wilderness Area | USA | 46.24 | -89.35 | 2002-2006 | Desai et al. (2005) |
| US-Ton | CA - Tonzi Ranch | USA | 38.43 | -120.97 | 2001-2006 | Ma et al. (2007) |
| US-UMB | MI - Univ. of Mich. Biological Station | USA | 45.56 | -84.71 | 1999-2003 | Gough et al. (2008) |
| US-Var | CA - Vaira Ranch- Ione | USA | 38.41 | -120.95 | 2001-2006 | Ma et al. (2007) |
| US-WCr | WI - Willow Creek | USA | 45.81 | -90.08 | 1999-2006 | Cook et al. (2004) |
| US-Wi0 | WI - Young red pine (YRP) | USA | 46.62 | -91.08 | 2002-2002 | Desai et al. (2008) |
| US-Wi1 | WI - Intermediate hardwood (IHW) | USA | 46.73 | -91.23 | 2003-2003 | Desai et al. (2008) |
| US-Wi4 | WI - Mature red pine (MRP) | USA | 46.74 | -91.17 | 2002-2005 | Desai et al. (2008) |
| US-Wi5 | WI - Mixed young jack pine (MYJP) | USA | 46.65 | -91.09 | 2004-2004 | Desai et al. (2008) |
| US-Wi6 | WI - Pine barrens #1 (PB1) | USA | 46.62 | -91.30 | 2002-2002 | Desai et al. (2008) |
| US-Wi8 | WI - Young hardwood clearcut (YHW) | USA | 46.72 | -91.25 | 2002-2002 | Desai et al. (2008) |
| US-Wkg | AZ - Walnut Gulch Kendall Grasslands | USA | 31.74 | -109.94 | 2004-2006 | Scott et al. (2010) |
| US-Wrc | WA - Wind River Crane Site | USA | 45.82 | -121.95 | 1998-2006 | Falk et al. (2008) |
| VU-Coc | CocoFlux | Vanuatu | -15.44 | 167.19 | 2001-2004 | Roupsard et al. (2006) |
| ZA-Kru | Skukuza - Kruger National Park | South Africa | -25.02 | 31.50 | 2001-2003 | Scholes et al. (2001) |

Acknowledgements. The work presented in this paper is part of the project: *Detecting changes in essential ecosystem and biodiversity properties – towards a Biosphere Atmosphere Change Index: BACI*. This project has received funding from the European Union's Horizon 2020 research and innovation programme under grant agreement No. 640176. Furthermore, this work used eddy covariance data acquired by the FLUXNET community and in particular by the following networks: AmeriFlux (U.S. Department of Energy, Biological and Environmental Research, Terrestrial Carbon Program (DE-FG02-04ER63917 and DE-FG02-04ER63911)), AfriFlux, AsiaFlux, CarboAfrica, CarboEuropeIP, CarboItaly, CarboMont, ChinaFlux, Fluxnet-Canada (supported by CFCAS, NSERC, BIOCAP, Environment Canada, and NRCan), GreenGrass, KoFlux, LBA, NECC, OzFlux, TCOS-Siberia, and USCCC. We acknowledge the financial support to the eddy covariance data harmonization provided by CarboEuropeIP, FAO-GTOS-TCO, iLEAPS, Max Planck Institute for Biogeochemistry, National Science Foundation, University of Tuscia, Université Laval and Environment Canada and US Department of Energy and the database development and technical support from Berkeley Water Center, Lawrence Berkeley National Laboratory, Microsoft Research eScience, Oak Ridge National Laboratory, University of California - Berkeley, University of Virginia.



References

- Acosta, M., Pavelka, M., Pokorný, R., Janouš, D., and Marek, M. V.: Seasonal Variation in CO₂ Efflux of Stems and Branches of Norway Spruce Trees, *Annals of Botany*, 101, 469–477, doi:10.1093/aob/mcm304, 2008.
- Allard, V., Soussana, J.-F., Falcimagne, R., Berbigier, P., Bonnefond, J.-M., Ceschia, E., D'hour, P., Hénault, C., Laville, P., Martin, C., and Pinarès-Patino, C.: The role of grazing management for the net biome productivity and greenhouse gas budget (CO₂, N₂O and CH₄) of semi-natural grassland, *Agriculture, Ecosystems & Environment*, 121, 47–58, doi:10.1016/j.agee.2006.12.004, 2007.
- Allard, V., Ourcival, J. M., Rambal, S., Joffre, R., and Rocheteau, A.: Seasonal and annual variation of carbon exchange in an evergreen Mediterranean forest in southern France, *Global Change Biology*, 14, 714–725, doi:10.1111/j.1365-2486.2008.01539.x, 2008.
- Allison, V. J., Yermakov, Z., Miller, R. M., Jastrow, J. D., and Matamala, R.: Using landscape and depth gradients to decouple the impact of correlated environmental variables on soil microbial community composition, *Soil Biology and Biochemistry*, 39, 505–516, doi:10.1016/j.soilbio.2006.08.021, 2007.
- Amiro, B. D., Barr, A. G., Black, T. A., Iwashita, H., Kljun, N., McCaughey, J. H., Morgenstern, K., Murayama, S., Nesic, Z., Orchansky, A. L., and Saigusa, N.: Carbon, energy and water fluxes at mature and disturbed forest sites, Saskatchewan, Canada, *Agricultural and Forest Meteorology*, 136, 237–251, doi:10.1016/j.agrformet.2004.11.012, 2006.
- Ammann, C., Flechard, C. R., Leifeld, J., Neftel, A., and Fuhrer, J.: The carbon budget of newly established temperate grassland depends on management intensity, *Agriculture, Ecosystems & Environment*, 121, 5–20, doi:10.1016/j.agee.2006.12.002, 2007.
- Anthoni, P. M., Knohl, A., Rebmann, C., Freibauer, A., Mund, M., Ziegler, W., Kolle, O., and Schulze, E.-D.: Forest and agricultural land-use-dependent CO₂ exchange in Thuringia, Germany, *Global Change Biology*, 10, 2005–2019, doi:10.1111/j.1365-2486.2004.00863.x, 2004.
- Arain, M. A. and Restrepo-Coupe, N.: Net ecosystem production in a temperate pine plantation in southeastern Canada, *Agricultural and Forest Meteorology*, 128, 223–241, doi:10.1016/j.agrformet.2004.10.003, 2005.
- Arnth, A., Veenendaal, E. M., Best, C., Timmermans, W., Kolle, O., Montagnani, L., and Shibistova, O.: Water use strategies and ecosystem-atmosphere exchange of CO₂ in two highly seasonal environments, *Biogeosciences*, 3, 421–437, doi:10.5194/bg-3-421-2006, 2006.
- Aubinet, M., Chermanne, B., Vandenhaute, M., Longdoz, B., Yernaux, M., and Laitat, E.: Long term carbon dioxide exchange above a mixed forest in the Belgian Ardennes, *Agricultural and Forest Meteorology*, 108, 293–315, doi:10.1016/S0168-1923(01)00244-1, 2001.
- Aubinet, M., Vesala, T., and Papale, D., eds.: *Eddy Covariance: A Practical Guide to Measurement and Data Analysis*, Springer Atmospheric Sciences, Springer, 1 edn., doi:10.1007/978-94-007-2351-1, 2012.
- Aurela, M., Laurila, T., and Tuovinen, J.-P.: The timing of snow melt controls the annual CO₂ balance in a subarctic fen, *Geophysical Research Letters*, 31, 1–4, doi:10.1029/2004GL020315, 2004.
- Baldocchi, D.: Measuring fluxes of trace gases and energy between ecosystems and the atmosphere – the state and future of the eddy covariance method, *Global Change Biology*, 20, 3600–3609, 2014.
- Baldocchi, D. D., Hincks, B. B., and Meyers, T. P.: Measuring Biosphere-Atmosphere Exchanges of Biologically Related Gases with Micrometeorological Methods, *Ecology*, 69, 1331–1340, doi:10.2307/1941631, 1988.
- Balzarolo, M., Anderson, K., Nichol, C., Rossini, M., Vescovo, L., Arriga, N., Wohlfahrt, G., Calvet, J.-C., Carrara, A., Cerasoli, S., Cogliati, S., Daumard, F., Eklundh, L., Elbers, J. A., Evrendilek, F., Handcock, R. N., Kaduk, J., Klumpp, K., Longdoz, B., Matteucci, G., Meroni, M., Montagnani, L., Ourcival, J.-M., Sánchez-Cañete, E. P., Pontailler, J.-Y., Juszczak, R., Scholes, B., and Martín, M. P.: Ground-Based



- Optical Measurements at European Flux Sites: A Review of Methods, Instruments and Current Controversies, *Sensors*, 11, 7954–7981, doi:10.3390/s110807954, 2011.
- Beer, C., Reichstein, M., Tomelleri, E., Ciais, P., Jung, M., Carvalhais, N., Rödenbeck, C., Arain, M. A., Baldocchi, D., Bonan, G. B., Bondeau, A., Cescatti, A., Lasslop, G., Lindroth, A., Lomas, M., Luysaert, S., Margolis, H., Oleson, K. W., Rouspard, O., Veenendaal, E., Viovy, N., Williams, C., Woodward, F. I., and Papale, D.: Terrestrial Gross Carbon Dioxide Uptake: Global Distribution and Covariation with Climate, *Science*, 329, 834–838, doi:10.1126/science.1184984, 2010.
- Belelli Marchesini, L., Papale, D., Reichstein, M., Vuichard, N., Tchebakova, N., and Valentini, R.: Carbon balance assessment of a natural steppe of southern Siberia by multiple constraint approach, *Biogeosciences*, 4, 581–595, doi:10.5194/bg-4-581-2007, 2007.
- Berbigier, P., Bonnefond, J.-M., and Mellmann, P.: CO₂ and water vapour fluxes for 2 years above Euroflux forest site, *Agricultural and Forest Meteorology*, 108, 183–197, doi:10.1016/S0168-1923(01)00240-4, 2001.
- Bergeron, O., Margolis, H. A., Black, T. A., Coursolle, C., Dunn, A. L., Barr, A. G., and Wofsy, S. C.: Comparison of carbon dioxide fluxes over three boreal black spruce forests in Canada, *Global Change Biology*, 13, 89–107, doi:10.1111/j.1365-2486.2006.01281.x, 2007.
- Beringer, J., Hutley, L. B., Tapper, N. J., and Cernusak, L. A.: Savanna fires and their impact on net ecosystem productivity in North Australia, *Global Change Biology*, 13, 990–1004, doi:10.1111/j.1365-2486.2007.01334.x, 2007.
- Beringer, J., Livesley, S. J., Randle, J., and Hutley, L. B.: Carbon dioxide fluxes dominate the greenhouse gas exchanges of a seasonal wetland in the wet-dry tropics of northern Australia, *Agricultural and Forest Meteorology*, 182, 239–247, doi:10.1016/j.agrformet.2013.06.008, 2013.
- Bernhofer, C., Aubinet, M., Clement, R., Grelle, A., Grünwald, T., Ibrom, A., Jarvis, P., Rebmann, C., Schulze, E.-D., and Tenhunen, J. D.: Spruce forests (Norway and Sitka spruce, including Douglas fir): Carbon and water fluxes and Balances, ecological and ecophysiological determinants, in: *Fluxes of carbon, water and energy of European forests*, edited by Valentini, R., pp. 99–123, Springer, doi:10.1007/978-3-662-05171-9_6, 2003.
- Béziat, P., Ceschia, E., and Dedieu, G.: Carbon balance of a three crop succession over two cropland sites in South West France, *Agricultural and Forest Meteorology*, 149, 1628–1645, doi:10.1016/j.agrformet.2009.05.004, 2009.
- Bonal, D., Bosc, A., Ponton, S., Goret, J.-Y., Burban, B., Gross, P., Bonnefond, J.-M., Elbers, J., Longdoz, B., Epron, D., Guehl, J.-M., and Granier, A.: Impact of severe dry season on net ecosystem exchange in the Neotropical rainforest of French Guiana, *Global Change Biology*, 14, 1917–1933, doi:10.1111/j.1365-2486.2008.01610.x, 2008.
- Bonan, G. B.: Forests and climate change: forcings, feedbacks, and the climate benefits of forests, *Science*, 320, 1444–1449, doi:10.1126/science.1155121, 2008.
- Bonan, G. B., Lawrence, P. J., Oleson, K. W., Levis, S., Jung, M., Reichstein, M., Lawrence, D. M., and Swenson, S. C.: Improving canopy processes in the Community Land Model version 4 (CLM4) using global flux fields empirically inferred from FLUXNET data, *Journal of Geophysical Research: Biogeosciences*, 116, G02 014, doi:10.1029/2010JG001593, 2011.
- Borma, L. S., Rocha, H. R. d., Cabral, O. M., Randow, C. v., Collicchio, E., Kurzatkowski, D., Brugger, P. J., Freitas, H., Tannus, R., Oliveira, L., Renno, C. D., and Artaxo, P.: Atmosphere and hydrological controls of the evapotranspiration over a floodplain forest in the Bananal Island region, Amazonia, *Journal of Geophysical Research: Biogeosciences*, 114, doi:10.1029/2007JG000641, 2009.
- Bracho, R., Powell, T. L., Dore, S., Li, J., Hinkle, C. R., and Drake, B. G.: Environmental and biological controls on water and energy exchange in Florida scrub oak and pine flatwoods ecosystems, *Journal of Geophysical Research: Biogeosciences*, 113, 1–13, doi:10.1029/2007JG000469, 2008.



- Bracho, R., Starr, G., Gholz, H. L., Martin, T. A., Cropper, W. P., and Loescher, H. W.: Controls on carbon dynamics by ecosystem structure and climate for southeastern U.S. slash pine plantations, *Ecological Monographs*, 82, 101–128, doi:10.1890/11-0587.1, 2012.
- Breiman, L.: Bagging Predictors, *Machine Learning*, 24, 123–140, doi:10.1007/BF00058655, 1996.
- Breiman, L.: Random Forests, *Machine Learning*, 45, 5–32, doi:10.1023/A:1010933404324, 2001.
- 5 Broquet, G., Chevallierand F.-M. Bréon, F., Kadyrov, N., Alemanno, M., Apadula, F., Hammer, S., Haszpra, L., Meinhardt, F., Morguí, J. A., Necki, J., Piacentino, S., Ramonet, M., Schmidt, M., Thompson, R. L., Vermeulen, A. T., Yver, C., and Ciais, P.: Regional inversion of CO₂ ecosystem fluxes from atmospheric measurements: reliability of the uncertainty estimates, *Atmospheric Chemistry and Physics*, 13, 9039–9056, doi:10.5194/acp-13-9039-2013, 2013.
- Carvalhais, N., Reichstein, M., Seixas, J., James Collatz, G., Santos Pereira, J., Berbigier, P., Carrara, A., Granier, A., , Montagnani, L.,
10 Papale, D., Rambal, S., Sanz, M. J., and Valentini, R.: Implications of the carbon cycle steady state assumption for biogeochemical modeling performance and inverse parameter retrieval, *Global Biogeochemical Cycles*, 22, 1–16, doi:10.1029/2007GB003033, 2008.
- Cescatti, A. and Marcolla, B.: Drag coefficient and turbulence intensity in conifer canopies, *Agricultural and Forest Meteorology*, 121, 197–206, doi:10.1016/j.agrformet.2003.08.028, 2004.
- Chen, S., Chen, J., Lin, G., Zhang, W., Miao, H., Wei, L., Huang, J., and Han, X.: Energy balance and partition in Inner Mongolia steppe
15 ecosystems with different land use types, *Agricultural and Forest Meteorology*, 149, 1800–1809, doi:10.1016/j.agrformet.2009.06.009, 2009.
- Chiesi, M., Maselli, F., Bindi, M., Fibbi, L., Cherubini, P., Arlotta, E., Tirone, G., Matteucci, G., and Seufert, G.: Modelling carbon budget of Mediterranean forests using ground and remote sensing measurements, *Agricultural and Forest Meteorology*, 135, 22–34, doi:10.1016/j.agrformet.2005.09.011, 2005.
- 20 Christensen, T. R., Johansson, T., Olsrud, M., Ström, L., Lindroth, A., Mastepanov, M., Malmer, N., Friborg, T., Crill, P., and Callaghan, T. V.: A catchment-scale carbon and greenhouse gas budget of a subarctic landscape, *Philosophical Transactions of the Royal Society of London A: Mathematical, Physical and Engineering Sciences*, 365, 1643–1656, doi:10.1098/rsta.2007.2035, 2007.
- Christensen, T. R., Jackowicz-Korczyński, M., Aurela, M., Crill, P., Heliasz, M., Mastepanov, M., and Friborg, T.: Monitoring the Multi-Year Carbon Balance of a Subarctic Palsa Mire with Micrometeorological Techniques, *AMBIO*, 41, 207–217, doi:10.1007/s13280-012-0302-5,
25 2012.
- Chu, H., Baldocchi, D. D., John, R., Wolf, S., and Reichstein, M.: Fluxes all of the time? A primer on the temporal representativeness of FLUXNET, *Journal of Geophysical Research: Biogeosciences*, 122, 289–307, doi:10.1002/2016JG003576, <http://dx.doi.org/10.1002/2016JG003576>, 2016JG003576, 2017.
- Cook, B. D., Davis, K. J., Wang, W., Desai, A., Berger, B. W., Teclaw, R. M., Martin, J. G., Bolstad, P. V., Bakwin, P. S., Yi, C., and
30 Heilman, W.: Carbon exchange and venting anomalies in an upland deciduous forest in northern Wisconsin, USA, *Agricultural and Forest Meteorology*, 126, 271–295, doi:10.1016/j.agrformet.2004.06.008, 2004.
- Corradi, C., Kolle, O., Walter, K., Zimov, S. A., and Schulze, E.-D.: Carbon dioxide and methane exchange of a north-east Siberian tussock tundra, *Global Change Biology*, 11, 1910–1925, doi:10.1111/j.1365-2486.2005.01023.x, 2005.
- Davidson, S. J., Santos, M. J., Sloan, V. L., Watts, J. D., Phoenix, G. K., Oechel, W. C., and Zona, D.: Mapping Arctic Tundra Vegetation Communities Using Field Spectroscopy and Multispectral Satellite Data in North Alaska, USA, *Remote Sensing*, 8, 1–24, doi:10.3390/rs8120978, 2016.
- 35 Delpierre, N., Berveiller, D., Granda, E., and Dufrière, E.: Wood phenology, not carbon input, controls the interannual variability of wood growth in a temperate oak forest, *New Phytologist*, 210, 459–470, doi:10.1111/nph.13771, 2016.



- Desai, A. R., Bolstad, P. V., Cook, B. D., Davis, K. J., and Carey, E. V.: Comparing net ecosystem exchange of carbon dioxide between an old-growth and mature forest in the upper Midwest, USA, *Agricultural and Forest Meteorology*, 128, 33–55, doi:10.1016/j.agrformet.2004.09.005, 2005.
- Desai, A. R., Noormets, A., Bolstad, P. V., Chen, J., Cook, B. D., Davis, K. J., Euskirchen, E. S., Gough, C., Martin, J. G., Ricciuto, D. M., Schmid, H. P., Tang, J., and Wang, W.: Influence of vegetation and seasonal forcing on carbon dioxide fluxes across the Upper Midwest, USA: Implications for regional scaling, *Agricultural and Forest Meteorology*, 148, 288–308, doi:10.1016/j.agrformet.2007.08.001, 2008.
- Desai, A. R., Xu, K., Tian, H., Weishampel, P., Thom, J., Baumann, D., Andrews, A. E., Cook, B. D., King, J. Y., and Kolka, R.: Landscape-level terrestrial methane flux observed from a very tall tower, *Agricultural and Forest Meteorology*, 201, 61–75, doi:10.1016/j.agrformet.2014.10.017, 2015.
- Dirmeyer, P. A., Cash, B. A., Kinter III, J. L., Stan, C., Jung, T., Marx, L., Towers, P., Wedi, N., Adams, J. M., Altschuler, E. L., Huang, B., Jin, E. K., and Manganello, J.: Evidence for Enhanced Land-Atmosphere Feedback in a Warming Climate, *Journal of Hydrometeorology*, 13, 981–995, doi:10.1175/JHM-D-11-0104.1, 2012.
- Dolman, A. J., Moors, E. J., and Elbers, J. A.: The carbon uptake of a mid latitude pine forest growing on sandy soil, *Agricultural and Forest Meteorology*, 111, 157–170, doi:10.1016/S0168-1923(02)00024-2, 2002.
- Don, A., Rebmann, C., Kolle, O., Scherer-Lorenzen, M., and Schulze, E.-D.: Impact of afforestation-associated management changes on the carbon balance of grassland, *Global Change Biology*, 15, 1990–2002, doi:10.1111/j.1365-2486.2009.01873.x, 2009.
- Dore, S., Kolb, T. E., Montes-Helu, M., Sullivan, B. W., Winslow, W. D., Hart, S. C., Kaye, J. P., Koch, G. W., and Hungate, B. A.: Long-term impact of a stand-replacing fire on ecosystem CO₂ exchange of a ponderosa pine forest, *Global Change Biology*, 14, 1801–1820, doi:10.1111/j.1365-2486.2008.01613.x, 2008.
- Drewer, J., Lohila, A., Aurela, M., Laurila, T., Minkkinen, K., Penttilä, T., Dinsmore, K. J., McKenzie, R. M., Helfter, C., Flechard, C., Sutton, M. A., and Skiba, U. M.: Comparison of greenhouse gas fluxes and nitrogen budgets from an ombrotrophic bog in Scotland and a minerotrophic sedge fen in Finland, *European Journal of Soil Science*, 61, 640–650, doi:10.1111/j.1365-2389.2010.01267.x, 2010.
- Dunn, A. L., Barford, C. C., Wofsy, S. C., Goulden, M. L., and Daube, B. C.: A long-term record of carbon exchange in a boreal black spruce forest: means, responses to interannual variability, and decadal trends, *Global Change Biology*, 13, 577–590, doi:10.1111/j.1365-2486.2006.01221.x, 2007.
- Falk, M., Wharton, S., Schroeder, M., Ustin, S., and Paw U, K. T.: Flux partitioning in an old-growth forest: seasonal and interannual dynamics, *Tree Physiology*, 28, 509–520, doi:10.1093/treephys/28.4.509, 2008.
- Famulari, D., Fowler, D., Hargreaves, K., Milford, C., Nemitz, E., Sutton, M. A., and Weston, K.: Measuring Eddy Covariance Fluxes of Ammonia Using Tunable Diode Laser Absorption Spectroscopy, *Water, Air, & Soil Pollution: Focus*, 4, 151–158, doi:10.1007/s11267-004-3025-1, 2004.
- Fischer, M. L., Billesbach, D. P., Berry, J. A., Riley, W. J., and Torn, M. S.: Spatiotemporal Variations in Growing Season Exchanges of CO₂, H₂O, and Sensible Heat in Agricultural Fields of the Southern Great Plains, *Earth Interactions*, 11, 1–21, doi:10.1175/EI231.1, 2007.
- Flanagan, L. B., Wever, L. A., and Carlson, P. J.: Seasonal and interannual variation in carbon dioxide exchange and carbon balance in a northern temperate grassland, *Global Change Biology*, 8, 599–615, doi:10.1046/j.1365-2486.2002.00491.x, 2002.
- Friedl, M. A., Sulla-Menashe, D., Tan, B., Schneider, A., Ramankutty, N., Sibley, A., and Huang, X.: MODIS Collection 5 global land cover: Algorithm refinements and characterization of new datasets, *Remote Sensing of Environment*, 114, 168–182, doi:10.1016/j.rse.2009.08.016, 2010.



- Garbulsky, M., Peñuelas, J., Papale, D., and Filella, I.: Remote estimation of carbon dioxide uptake by a Mediterranean forest, *Global Change Biology*, 14, 2860–2867, doi:10.1111/j.1365-2486.2008.01684.x, 2008.
- Giasson, M.-A., Coursolle, C., and Margolis, H. A.: Ecosystem-level CO₂ fluxes from a boreal cutover in eastern Canada before and after scarification, *Agricultural and Forest Meteorology*, 140, 23–40, doi:10.1016/j.agrformet.2006.08.001, 2006.
- 5 Gielen, B., Verbeeck, H., Neiryneck, J., Sampson, D. A., Vermeiren, F., and Janssens, I. A.: Decadal water balance of a temperate Scots pine forest (*Pinus sylvestris* L.) based on measurements and modelling, *Biogeosciences*, 7, 1247–1261, doi:10.5194/bg-7-1247-2010, 2010.
- Gilmanov, T. G., Soussana, J. F., Aires, L., Allard, V., Ammann, C., Balzarolo, M., Barcza, Z., Bernhofer, C., Campbell, C. L., Cernusca, A., Cescatti, A., Clifton-Brown, J., Dirks, B. O. M., Dore, S., Eugster, W., Fuhrer, J., Gimeno, C., Gruenwald, T., Haszpra, L., Hensen, A., Ibrom, A., Jacobs, A. F. G., Jones, M. B., Lanigan, G., Laurila, T., Lohila, A., Manca, G., Marcolla, B., Nagy, Z., Pilegaard, K.,
- 10 Pinter, K., Pio, C., Raschi, A., Rogiers, N., Sanz, M. J., Stefani, P., Sutton, M., Tuba, Z., Valentini, R., Williams, M. L., and Wohlfahrt, G.: Partitioning European grassland net ecosystem CO₂ exchange into gross primary productivity and ecosystem respiration using light response function analysis, *Agriculture, Ecosystems & Environment*, 121, 93–120, doi:10.1016/j.agee.2006.12.008, 2007.
- Glenn, A. J., Flanagan, L. B., Syed, K. H., and Carlson, P. J.: Comparison of net ecosystem CO₂ exchange in two peatlands in western Canada with contrasting dominant vegetation, *Sphagnum* and *Carex*, *Agricultural and Forest Meteorology*, 140, 115–135,
- 15 doi:10.1016/j.agrformet.2006.03.020, 2006.
- Goldstein, A. H., Hultman, N. E., Fracheboud, J. M., Bauer, M. R., Panek, J. A., Xu, M., Qi, Y., Guenther, A. B., and Baugh, W.: Effects of climate variability on the carbon dioxide, water, and sensible heat fluxes above a ponderosa pine plantation in the Sierra Nevada (CA), *Agricultural and Forest Meteorology*, 101, 113–129, doi:10.1016/S0168-1923(99)00168-9, 2000.
- Gomez-Casanovas, N., Matamala, R., Cook, D. R., and Gonzalez-Meler, M. A.: Net ecosystem exchange modifies the relationship between
- 20 the autotrophic and heterotrophic components of soil respiration with abiotic factors in prairie grasslands, *Global Change Biology*, 18, 2532–2545, doi:10.1111/j.1365-2486.2012.02721.x, 2012.
- Gorsel, E. v., Leuning, R., Cleugh, H. A., Keith, H., and Suni, T.: Nocturnal carbon efflux: reconciliation of eddy covariance and chamber measurements using an alternative to the u*-threshold filtering technique, *Tellus B: Chemical and Physical Meteorology*, 59, 397–403, doi:10.1111/j.1600-0889.2007.00252.x, 2007.
- 25 Gough, C. M., Vogel, C. S., Schmid, H. P., Su, H.-B., and Curtis, P. S.: Multi-year convergence of biometric and meteorological estimates of forest carbon storage, *Agricultural and Forest Meteorology*, 148, 158–170, doi:10.1016/j.agrformet.2007.08.004, 2008.
- Goulden, M. L., Winston, G. C., McMillan, A. M. S., Litvak, M. E., Read, E. L., Rocha, A. V., and Elliot, J. R.: An eddy covariance mesonet to measure the effect of forest age on land–atmosphere exchange, *Global Change Biology*, 12, 2146–2162, doi:10.1111/j.1365-2486.2006.01251.x, 2006.
- 30 Granier, A., Ceschia, E., Damesin, C., Dufréne, E., Epron, D., Gross, P., Lebaube, S., Dantec, V. L., Goff, N. L., Lemoine, D., Lucot, E., Ottorini, J. M., Pontailler, J. Y., and Saugier, B.: The carbon balance of a young Beech forest, *Functional Ecology*, 14, 312–325, doi:10.1046/j.1365-2435.2000.00434.x, 2000.
- Grünzweig, J. M., Lin, T., Rotenberg, E., Schwartz, A., and Yakir, D.: Carbon sequestration in arid-land forest, *Global Change Biology*, 9, 791–799, doi:10.1046/j.1365-2486.2003.00612.x, 2003.
- 35 Gu, L., Meyers, T., Pallardy, S. G., Hanson, P. J., Yang, B., Heuer, M., Hosman, K. P., Riggs, J. S., Sluss, D., and Wullschleger, S. D.: Direct and indirect effects of atmospheric conditions and soil moisture on surface energy partitioning revealed by a prolonged drought at a temperate forest site, *Journal of Geophysical Research: Atmospheres*, 111, 1–13, doi:10.1029/2006JD007161, 2006.



- Guan, D.-X., Wu, J.-B., Zhao, X.-S., Han, S.-J., Yu, G.-R., Sun, X.-M., and Jin, C.-J.: CO₂ fluxes over an old, temperate mixed forest in northeastern China, *Agricultural and Forest Meteorology*, 137, 138–149, doi:10.1016/j.agrformet.2006.02.003, 2006.
- Guanter, L., Zhang, Y., Jung, M., Joiner, J., Voigt, M., Berry, J. A., Frankenberg, C., Huete, A. R., Zarco-Tejada, P., Lee, J.-E., Moran, M. S., Ponce-Campos, G., Beer, C., Camps-Valls, G., Buchmann, N., Gianelle, D., Klumpp, K., Cescatti, A., Baker, J. M., and Griffis, T. J.: Global and time-resolved monitoring of crop photosynthesis with chlorophyll fluorescence, *Proceedings of the National Academy of Sciences*, 111, E1327–E1333, doi:10.1073/pnas.1320008111, <http://www.pnas.org/content/111/14/E1327.abstract>, 2014.
- Haapanala, S., Rinne, J., Pystynen, K.-H., Hellén, H., Hakola, H., and Riutta, T.: Measurements of hydrocarbon emissions from a boreal fen using the REA technique, *Biogeosciences*, 3, 103–112, doi:10.5194/bg-3-103-2006, 2006.
- Hadley, J. L., Kuzeja, P. S., Daley, M. J., Phillips, N. G., Mulcahy, T., and Singh, S.: Water use and carbon exchange of red oak- and eastern hemlock-dominated forests in the northeastern USA: implications for ecosystem-level effects of hemlock woolly adelgid, *Tree Physiology*, 28, 615–627, doi:10.1093/treephys/28.4.615, 2008.
- Hadley, J. L., O’Keefe, J., Munger, J. W., Hollinger, D. Y., and Richardson, A. D.: Phenology of Forest-Atmosphere Carbon Exchange for Deciduous and Coniferous Forests in Southern and Northern New England, in: *Phenology of Ecosystem Processes: Applications in Global Change Research*, edited by Noormets, A., pp. 119–141, Springer, doi:10.1007/978-1-4419-0026-5_5, 2009.
- Harding, R. J. and Lloyd, C. R.: Evaporation and energy balance of a wet grassland at Tadhams Moor on the Somerset Levels, *Hydrological Processes*, 22, 2346–2357, doi:10.1002/hyp.6829, 2008.
- Heilman, J. L., Litvak, M. E., McInnes, K. J., Kjelgaard, J. F., Kamps, R. H., and Schwinning, S.: Water-storage capacity controls energy partitioning and water use in karst ecosystems on the Edwards Plateau, Texas, *Ecohydrology*, 7, 127–138, doi:10.1002/eco.1327, 2014.
- Hendriks, D. M. D., Huissteden, J. v., Dolman, A. J., and Molen, M. K. v. d.: The full greenhouse gas balance of an abandoned peat meadow, *Biogeosciences*, 4, 411–424, doi:10.5194/bg-4-411-2007, 2007.
- Hirano, T., Hirata, R., Fujinuma, Y., Saigusa, N., Yamamoto, S., Harazono, Y., Takada, M., Inukai, K., and Inoue, G.: CO₂ and water vapor exchange of a larch forest in northern Japan, *Tellus B: Chemical and Physical Meteorology*, 55, 244–257, doi:10.1034/j.1600-0889.2003.00063.x, 2003.
- Hirano, T., Segah, H., Harada, T., Limin, S., June, T., Hirata, R., and Osaki, M.: Carbon dioxide balance of a tropical peat swamp forest in Kalimantan, Indonesia, *Global Change Biology*, 13, 412–425, doi:10.1111/j.1365-2486.2006.01301.x, 2007.
- Hollinger, D. Y., Aber, J., Dail, B., Davidson, E. A., Goltz, S. M., Hughes, H., Leclerc, M. Y., Lee, J. T., Richardson, A. D., Rodrigues, C., Scott, N. A., Achuatavari, D., and Walsh, J.: Spatial and temporal variability in forest–atmosphere CO₂ exchange, *Global Change Biology*, 10, 1689–1706, doi:10.1111/j.1365-2486.2004.00847.x, 2004.
- Hong, J., Kim, J., Lee, D., and Lim, J.-H.: Estimation of the storage and advection effects on H₂O and CO₂ exchanges in a hilly KoFlux forest catchment, *Water Resources Research*, 44, 1–10, doi:10.1029/2007WR006408, 2008.
- Houborg, R. M. and Soegaard, H.: Regional simulation of ecosystem CO₂ and water vapor exchange for agricultural land using NOAA AVHRR and Terra MODIS satellite data. Application to Zealand, Denmark, *Remote Sensing of Environment*, 93, 150–167, doi:10.1016/j.rse.2004.07.001, 2004.
- Humphreys, E. R., Black, T. A., Morgenstern, K., Cai, T., Drewitt, G. B., Nestic, Z., and Trofymow, J. A.: Carbon dioxide fluxes in coastal Douglas-fir stands at different stages of development after clearcut harvesting, *Agricultural and Forest Meteorology*, 140, 6–22, doi:10.1016/j.agrformet.2006.03.018, 2006.
- Ichii, K., Ueyama, M., Kondo, M., Saigusa, N., Kim, J., Alberto, M. C., Ardö, J., Euskirchen, E. S., Kang, M., Hirano, T., Joiner, J., Kobayashi, H., Marchesini, L. B., Merbold, L., Miyata, A., Saitoh, T. M., Takagi, K., Varlagin, A., Bret-Harte, M. S., Kitamura, K.,



- Kosugi, Y., Kotani, A., Kumar, K., Li, S. G., Machimura, T., Matsuura, Y., Mizoguchi, Y., Ohta, T., Mukherjee, S., Yanagi, Y., Yasuda, Y., Zhang, Y., and Zhao, F.: New data-driven estimation of terrestrial CO₂ fluxes in Asia using a standardized database of eddy covariance measurements, remote sensing data, and support vector regression, *Journal of Geophysical Research: Biogeosciences*, 122, 767–795, doi:10.1002/2016JG003640, 2017.
- 5 Irvine, J., Law, B. E., and Hibbard, K. A.: Postfire carbon pools and fluxes in semiarid ponderosa pine in Central Oregon, *Global Change Biology*, 13, 1748–1760, doi:10.1111/j.1365-2486.2007.01368.x, 2007.
- Jacobs, C. M. J., Jacobs, A. F. G., Bosveld, F. C., Hendriks, D. M. D., Hensen, A., Kroon, P. S., Moors, E. J., Nol, L., Schrier-Uijl, A., and Veenendaal, E. M.: Variability of annual CO₂ exchange from Dutch grasslands, *Biogeosciences*, 4, 803–816, doi:10.5194/bg-4-803-2007, 2007.
- 10 Jenkins, J. P., Richardson, A. D., Braswell, B. H., Ollinger, S. V., Hollinger, D. Y., and Smith, M.-L.: Refining light-use efficiency calculations for a deciduous forest canopy using simultaneous tower-based carbon flux and radiometric measurements, *Agricultural and Forest Meteorology*, 143, 64–79, doi:10.1016/j.agrformet.2006.11.008, 2007.
- Jung, M., Reichstein, M., and Bondeau, A.: Towards global empirical upscaling of FLUXNET eddy covariance observations: validation of a model tree ensemble approach using a biosphere model, *Biogeosciences*, 6, 2001–2013, doi:10.5194/bg-6-2001-2009, 2009.
- 15 Jung, M., Reichstein, M., Ciais, P., Seneviratne, S. I., Sheffield, J., Goulden, M. L., Bonan, G., Cescatti, A., Chen, J., de Jeu, R., Dolman, A. J., Eugster, W., Gerten, D., Gianelle, D., Gobron, N., Heinke, J., Kimball, J., Law, B. E., Montagnani, L., Mu, Q., Mueller, B., Oleson, K., Papale, D., Richardson, A. D., Rouspard, O., Running, S., Tomelleri, E., Niovy, N., Weber, U., Williams, C., Wood, E., Zaehle, S., and Zhang, K.: Recent decline in the global land evapotranspiration trend due to limited moisture supply, *Nature*, 467, 951–954, doi:10.1038/nature09396, 2010.
- 20 Jung, M., Reichstein, M., Margolis, H. A., Cescatti, A., Richardson, A. D., Arain, M. A., Arneth, A., Bernhofer, C., Bonal, D., Chen, J., Gianelle, D., Gobron, N., Kiely, G., Kutsch, W., Lasslop, G., Law, B. E., Lindroth, A., Merbold, L., Montagnani, L., Moors, E. J., Papale, D., Sottocornola, M., Vaccari, F., and Williams, C.: Global patterns of land-atmosphere fluxes of carbon dioxide, latent heat, and sensible heat derived from eddy covariance, satellite, and meteorological observations, *Journal of Geophysical Research: Biogeosciences*, 116, G00J07, doi:10.1029/2010JG001566, 2011.
- 25 Jung, M., Reichstein, M., Schwalm, C. R., Huntingford, C., Sitch, S., Ahlström, A., Arneth, A., Camps-Valls, G., Ciais, P., Friedlingstein, P., Gans, F., Ichii, K., Jain, A. K., Kato, E., Papale, D., Poulter, B., Raduly, B., Rödenbeck, C., Tramontana, G., Viovy, N., Wang, Y.-P., Weber, U., Zaehle, S., and Zeng, N.: Compensatory water effects link yearly global land CO₂ sink changes to temperature, *Nature*, 541, 516–520, doi:10.1038/nature20780, 2017.
- Kilinc, M., Beringer, J., Hutley, L. B., Haverd, V., and Tapper, N. J.: An analysis of the surface energy budget above the world's tallest angiosperm forest, *Agricultural and Forest Meteorology*, 166, 23–31, doi:10.1016/j.agrformet.2012.05.014, 2012.
- 30 Knohl, A., Schulze, E.-D., Kolle, O., and Buchmann, N.: Large carbon uptake by an unmanaged 250-year-old deciduous forest in Central Germany, *Agricultural and Forest Meteorology*, 118, 151–167, doi:10.1016/S0168-1923(03)00115-1, 2003.
- Krishnan, P., Meyers, T. P., Scott, R. L., Kennedy, L., and Heuer, M.: Energy exchange and evapotranspiration over two temperate semi-arid grasslands in North America, *Agricultural and Forest Meteorology*, 153, 31–44, doi:10.1016/j.agrformet.2011.09.017, 2012.
- 35 Kurbatova, J., Arneth, A., Vygodskaya, N. N., Kolle, O., Varlargin, A. V., Milyukova, I. M., Tchebakova, N. M., Schulze, E.-D., and Lloyd, J.: Comparative ecosystem-atmosphere exchange of energy and mass in a European Russian and a central Siberian bog I. Interseasonal and interannual variability of energy and latent heat fluxes during the snowfree period, *Tellus B: Chemical and Physical Meteorology*, 54, 497–513, doi:10.1034/j.1600-0889.2002.01354.x, 2002.



- Kurbatova, J., Li, C., Varlagin, A., Xiao, X., and Vygodskaya, N.: Modeling carbon dynamics in two adjacent spruce forests with different soil conditions in Russia, *Biogeosciences*, 5, 969–980, doi:10.5194/bg-5-969-2008, 2008.
- Kutsch, W. L., Aubinet, M., Buchmann, N., Smith, P., Osborne, B., Eugster, W., Wattenbach, M., Schrumpf, M., Schulze, E. D., Tomelleri, E., Ceschia, E., Bernhofer, C., Beziat, P., Carrara, A., Tommasi, P. D., Grünwald, T., Jones, M., Magliulo, V., Marloie, O., Moureaux, C.,
5 Olioso, A., Sanz, M. J., Saunders, M., Sogaard, H., and Ziegler, W.: The net biome production of full crop rotations in Europe, *Agriculture, Ecosystems & Environment*, 139, 336–345, doi:10.1016/j.agee.2010.07.016, 2010.
- Kwon, H.-J., Oechel, W. C., Zulueta, R. C., and Hastings, S. J.: Effects of climate variability on carbon sequestration among adjacent wet sedge tundra and moist tussock tundra ecosystems, *Journal of Geophysical Research: Biogeosciences*, 111, 1–18, doi:10.1029/2005JG000036, 2006.
- 10 Lafleur, P. M., Roulet, N. T., Bubier, J. L., Frolking, S., and Moore, T. R.: Interannual variability in the peatland-atmosphere carbon dioxide exchange at an ombrotrophic bog, *Global Biogeochemical Cycles*, 17, 1–14, doi:10.1029/2002GB001983, 2003.
- Lagergren, F., Lindroth, A., Dellwik, E., Ibrom, A., Lankreijer, H., Launiainen, S., Mölder, M., Kolari, P., Pilegaard, K., and Vesala, T.: Biophysical controls on CO₂ fluxes of three Northern forests based on long-term eddy covariance data, *Tellus B: Chemical and Physical Meteorology*, 60, 143–152, doi:10.1111/j.1600-0889.2006.00324.x, 2008.
- 15 Lasslop, G., Reichstein, M., Papale, D., Richardson, A., Arneeth, A., Barr, A., Stoy, P., and Wohlfahrt, G.: Separation of net ecosystem exchange into assimilation and respiration using a light response curve approach: critical issues and global evaluation, *Global Change Biology*, 16, 187–208, doi:10.1111/j.1365-2486.2009.02041.x, 2010.
- Launiainen, S., Katul, G. G., Kolari, P., Lindroth, A., Lohila, A., Aurela, M., Varlagin, A., Grelle, A., and Vesala, T.: Do the energy fluxes and surface conductance of boreal coniferous forests in Europe scale with leaf area?, *Global Change Biology*, 22, 4096–4113,
20 doi:10.1111/gcb.13497, 2016.
- Law, B. E., Thornton, P. E., Irvine, J., Anthoni, P. M., and Tuyl, S. V.: Carbon storage and fluxes in ponderosa pine forests at different developmental stages, *Global Change Biology*, 7, 755–777, doi:10.1046/j.1354-1013.2001.00439.x, 2001.
- Lee, H. C., Hong, J., Cho, C.-H., Choi, B.-C., Oh, S.-N., and Kim, J.: Surface Exchange of Energy and Carbon Dioxide between the Atmosphere and a Farmland in Haenam, Korea, *Korean Journal of Agricultural and Forest Meteorology*, 5, 61–69, 2003.
- 25 Lipson, D. A., Wilson, R. F., and Oechel, W. C.: Effects of elevated atmospheric CO₂ on soil microbial biomass, activity, and diversity in a chaparral ecosystem, *Applied and Environmental Microbiology*, 71, 8573–8580, doi:10.1128/AEM.71.12.8573-8580.2005, 2005.
- Liu, C., Zhang, Z., Sun, G., Zha, T., Zhu, J., Shen, L., Chen, J., Fang, X., and Chen, J.: Quantifying evapotranspiration and biophysical regulations of a poplar plantation assessed by eddy covariance and sap-flow methods, *Journal of Plant Ecology*, 33, 706–718, doi:10.3773/j.issn.1005-264x.2009.04.009, 2009.
- 30 Liu, H., Randerson, J. T., Lindfors, J., and Chapin, F. S.: Changes in the surface energy budget after fire in boreal ecosystems of interior Alaska: An annual perspective, *Journal of Geophysical Research: Atmospheres*, 110, 1–12, doi:10.1029/2004JD005158, 2005.
- Loubet, B., Laville, P., Lehuger, S., Larmanou, E., Fléchar, C., Mascher, N., Genermont, S., Roche, R., Ferrara, R. M., Stella, P., Personne, E., Durand, B., Decuq, C., Flura, D., Masson, S., Fanucci, O., Rampon, J.-N., Siemens, J., Kindler, R., Gabrielle, B., Schrumpf, M.,
and Cellier, P.: Carbon, nitrogen and Greenhouse gases budgets over a four years crop rotation in northern France, *Plant and Soil*, 343,
35 109–137, doi:10.1007/s11104-011-0751-9, 2011.
- Ma, S., Baldocchi, D. D., Xu, L., and Hehn, T.: Inter-annual variability in carbon dioxide exchange of an oak/grass savanna and open grassland in California, *Agricultural and Forest Meteorology*, 147, 157–171, doi:10.1016/j.agrformet.2007.07.008, 2007.



- Marcolla, B. and Cescatti, A.: Experimental analysis of flux footprint for varying stability conditions in an alpine meadow, *Agricultural and Forest Meteorology*, 135, 291–301, doi:10.1016/j.agrformet.2005.12.007, 2005.
- Marcolla, B., Cescatti, A., Montagnani, L., Manca, G., Kerschbaumer, G., and Minerbi, S.: Importance of advection in the atmospheric CO₂ exchanges of an alpine forest, *Agricultural and Forest Meteorology*, 130, 193–206, doi:10.1016/j.agrformet.2005.03.006, 2005.
- 5 Marek, M. V., Janouš, D., Taufarová, K., Havránková, K., Pavelka, M., Kaplan, V., and Marková, I.: Carbon exchange between ecosystems and atmosphere in the Czech Republic is affected by climate factors, *Environmental pollution*, 159, 1035–1039, doi:10.1016/j.envpol.2010.11.025, 2011.
- Matese, A., Alberti, G., Gioli, B., Toscano, P., Vaccari, F., and Zaldei, A.: Compact_Eddy: A compact, low consumption remotely controlled eddy covariance logging system, *Computers and Electronics in Agriculture*, 64, 343–346, doi:10.1016/j.compag.2008.07.002, 2008.
- 10 McCaughey, J. H., Pejam, M. R., Arain, M. A., and Cameron, D. A.: Carbon dioxide and energy fluxes from a boreal mixedwood forest ecosystem in Ontario, Canada, *Agricultural and Forest Meteorology*, 140, 79–96, doi:10.1016/j.agrformet.2006.08.010, 2006.
- Meinshausen, N.: Quantile regression forests, *Journal of Machine Learning Research*, 7, 983–999, 2006.
- Merbold, L., Ardö, J., Arneith, A., Scholes, R. J., Nouvellon, Y., Grandcourt, A. d., S. Archibald, Bonnefond, J. M., Boulain, N., Brueggemann, N., Bruemmer, C., Cappelaere, B., Ceschia, E., El-Khidir, H. A. M., El-Tahir, B. A., Falk, U., Lloyd, J., Kergoat, L., Dantec, V. L., Mougine,
- 15 E., Muchinda, M., Mukelabai, M. M., Ramier, D., Roupsard, O., Timouk, F., Veenendaal, E. M., and Kutsch, W. L.: Precipitation as driver of carbon fluxes in 11 African ecosystems, *Biogeosciences*, 6, 1027–1041, doi:10.5194/bg-6-1027-2009, 2009.
- Meyers, T. P. and Hollinger, S. E.: An assessment of storage terms in the surface energy balance of maize and soybean, *Agricultural and Forest Meteorology*, 125, 105–115, doi:10.1016/j.agrformet.2004.03.001, 2004.
- Migliavacca, M., Meroni, M., Manca, G., Matteucci, G., Montagnani, L., Grassi, G., Zenone, T., Teobaldelli, M., Goded, I., Colombo, R.,
- 20 and Seufert, G.: Seasonal and interannual patterns of carbon and water fluxes of a poplar plantation under peculiar eco-climatic conditions, *Agricultural and Forest Meteorology*, 149, 1460–1476, doi:10.1016/j.agrformet.2009.04.003, 2009.
- Mkhabela, M. S., Amiro, B. D., Barr, A. G., Black, T. A., Hawthorne, I., Kidston, J., McCaughey, J. H., Orchansky, A. L., Nestic, Z., Sass, A., Shashkov, A., and Zha, T.: Comparison of carbon dynamics and water use efficiency following fire and harvesting in Canadian boreal forests, *Agricultural and Forest Meteorology*, 149, 783–794, doi:10.1016/j.agrformet.2008.10.025, 2009.
- 25 Molen, M. K. v. d., Huissteden, J. v., Parmentier, F. J. W., Petrescu, A. M. R., Dolman, A. J., Maximov, T. C., Kononov, A. V., Karsanaev, S. V., and Suzdalov, D. A.: The growing season greenhouse gas balance of a continental tundra site in the Indigirka lowlands, NE Siberia, *Biogeosciences*, 4, 985–1003, doi:10.5194/bg-4-985-2007, 2007.
- Monson, R. K., Turnipseed, A. A., Sparks, J. P., Harley, P. C., Scott-Denton, L. E., Sparks, K., and Huxman, T. E.: Carbon sequestration in a high-elevation, subalpine forest, *Global Change Biology*, 8, 459–478, doi:10.1046/j.1365-2486.2002.00480.x, 2002.
- 30 Moors, E. J., Jacobs, C., Jans, W., Supit, I., Kutsch, W. L., Bernhofer, C., Béziat, P., Buchmann, N., Carrara, A., Ceschia, E., Elbers, J., Eugster, W., Kruijt, B., Loubet, B., Magliulo, E., Moureaux, C., Olioso, A., Saunders, M., and Soegaard, H.: Variability in carbon exchange of European croplands, *Agriculture, Ecosystems & Environment*, 139, 325–335, doi:10.1016/j.agee.2010.04.013, 2010.
- Moureaux, C., Debacq, A., Bodson, B., Heinesch, B., and Aubinet, M.: Annual net ecosystem carbon exchange by a sugar beet crop, *Agricultural and Forest Meteorology*, 139, 25–39, doi:10.1016/j.agrformet.2006.05.009, 2006.
- 35 Nagy, Z., Pintér, K., Czóbel, S., Balogh, J., Horváth, L., Fóti, S., Barcza, Z., Weidinger, T., Csintalan, Z., Dinh, N. Q., Grosz, B., and Tuba, Z.: The carbon budget of semi-arid grassland in a wet and a dry year in Hungary, *Agriculture, Ecosystems & Environment*, 121, 21–29, doi:10.1016/j.agee.2006.12.003, 2007.



- Nash, J. E. and Sutcliffe, J. V.: River flow forecasting through conceptual models part I - A discussion of principles, *Journal of Hydrology*, 10, 282–290, doi:10.1016/0022-1694(70)90255-6, 1970.
- Noormets, A., McNulty, S. G., Domec, J.-C., Gavazzi, M., Sun, G., and King, J. S.: The role of harvest residue in rotation cycle carbon balance in loblolly pine plantations. Respiration partitioning approach, *Global Change Biology*, 18, 3186–3201, doi:10.1111/j.1365-2486.2012.02776.x, 2012.
- Owen, K. E., Tenhunen, J., Reichstein, M., Wang, Q., Falge, E., Geyer, R., Xiao, X., PaulStoy, Ammann, C., Arain, A., Aubinet, M., Aurela, M., Bernhofer, C., Chojnicki, B. H., Granier, A., Gruenwald, T., Hadley, J., Heinesch, B., Hollinger, D., Knohl, A., Kutsch, W., Lohila, A., Meyers, T., Moors, E., Moureaux, C., Pilegaard, K., Saigusa, N., Verma, S., Vesala, T., and Vogel, C.: Linking flux network measurements to continental scale simulations: ecosystem carbon dioxide exchange capacity under non-water-stressed conditions, *Global Change Biology*, 13, 734–760, doi:10.1111/j.1365-2486.2007.01326.x, 2007.
- Papale, D., Black, T. A., Carvalhais, N., Cescatti, A., Chen, J., Jung, M., Kiely, G., Lasslop, G., Mahecha, M. D., Margolis, H., Merbold, L., Montagnani, L., Moors, E., Olesen, J. E., Reichstein, M., Tramontana, G., van Gorsel, E., Wohlfahrt, G., and Ráduly, B.: Effect of spatial sampling from European flux towers for estimating carbon and water fluxes with artificial neural networks, *Journal of Geophysical Research: Biogeosciences*, 120, 1941–1957, doi:10.1002/2015JG002997, <http://dx.doi.org/10.1002/2015JG002997>, 2015JG002997, 2015.
- Peichl, M., Brodeur, J. J., Khomik, M., and Arain, M. A.: Biometric and eddy-covariance based estimates of carbon fluxes in an age-sequence of temperate pine forests, *Agricultural and Forest Meteorology*, 150, 952–965, doi:10.1016/j.agrformet.2010.03.002, 2010.
- Peichl, M., Leahy, P., and Kiely, G.: Six-year stable annual uptake of carbon dioxide in intensively managed humid temperate grassland, *Ecosystems*, 14, 112–126, doi:10.1007/s10021-010-9398-2, 2011.
- Pereira, J. S., Mateus, J. A., Aires, L. M., Pita, G., Pio, C., David, J. S., Andrade, V., Banza, J., David, T. S., Paço, T. A., and Rodrigues, A.: Net ecosystem carbon exchange in three contrasting Mediterranean ecosystems – the effect of drought, *Biogeosciences*, 4, 791–802, doi:10.5194/bg-4-791-2007, 2007.
- Perez-Priego, O., El-Madany, T. S., Migliavacca, M., Kowalski, A. S., Jung, M., Carrara, A., Kolle, O., Martín, M. P., Pacheco-Labrador, J., Moreno, G., and Reichstein, M.: Evaluation of eddy covariance latent heat fluxes with independent lysimeter and sapflow estimates in a Mediterranean savannah ecosystem, *Agricultural and Forest Meteorology*, 236, 87–99, doi:10.1016/j.agrformet.2017.01.009, 2017.
- Pilegaard, K., Hummelshøj, P., Jensen, N. O., and Chen, Z.: Two years of continuous CO₂ eddy-flux measurements over a Danish beech forest, *Agricultural and Forest Meteorology*, 107, 29–41, doi:10.1016/S0168-1923(00)00227-6, 2001.
- Powell, T. L., Bracho, R., Li, J., Dore, S., Hinkle, C. R., and Drake, B. G.: Environmental controls over net ecosystem carbon exchange of scrub oak in central Florida, *Agricultural and Forest Meteorology*, 141, 19–34, doi:10.1016/j.agrformet.2006.09.002, 2006.
- Powell, T. L., Gholz, H. L., Clark, K. L., Starr, G., Cropper Jr., W. P., and Martin, T. A.: Carbon exchange of a mature, naturally regenerated pine forest in north Florida, *Global Change Biology*, 14, 2523–2538, doi:10.1111/j.1365-2486.2008.01675.x, 2008.
- Rasmussen, C. E. and Williams, C. K. I.: *Gaussian Processes for Machine Learning*, The MIT Press, 2006.
- Reichstein, M., Rey, A., Freibauer, A., Tenhunen, J., Valentini, R., Banza, J., Casals, P., Cheng, Y., Grünzweig, J. M., Irvine, J., Joffre, R., Law, B. E., Loustau, D., Miglietta, F., Oechel, W., Ourcival, J.-M., Pereira, J. S., Peressotti, A., Ponti, F., Qi, Y., Rambal, S., Rayment, M., Romanya, J., Rossi, F., Tedeschi, V., Tirone, G., Xu, M., and Yakir, D.: Modeling temporal and large-scale spatial variability of soil respiration from soil water availability, temperature and vegetation productivity indices, *Global Biogeochemical Cycles*, 17, 1–15, doi:10.1029/2003GB002035, 2003.



- Reichstein, M., Falge, E., Baldocchi, D., Papale, D., Aubinet, M., Berbigier, P., Bernhofer, C., Buchmann, N., Gilmanov, T., Granier, A., Grünwald, T., Havránková, K., Ilvesniemi, H., Janous, D., Knohl, A., Laurila, T., Lohila, A., Loustau, D., Matteucci, G., Meyers, T., Miglietta, F., Ourcival, J.-M., Pumpanen, J., Rambal, S., Rotenberg, E., Sanz, M., Seufert, G., Tenhunen, J., Vaccari, F., Vesala, T., Yakir, D., and Valentini, R.: On the separation of net ecosystem exchange into assimilation and ecosystem respiration: review and improved
5 algorithm, *Global Change Biology*, 11, 1424–1439, doi:10.1111/j.1365-2486.2005.001002.x, 2005.
- Restrepo-Coupe, N., Rocha, H. R. d., Hutryra, L. R., Araujo, A. C. d., Borma, L. S., Christoffersen, B., Cabral, O. M. R., Camargo, P. B. d., Cardoso, F. L., Costa, A. C. L. d., Fitzjarrald, D. R., Goulden, M. L., Kruijt, B., Maia, J. M., Malhi, Y. S., Manzi, A. O., Miller, S. D., Nobre, A. D., Randow, C. v., Sa, L. D. A., Sakai, R. K., Tota, J., Wofsy, S. C., Zanchi, F. B., and Saleska, S. R.: What drives the seasonality of photosynthesis across the Amazon basin? A cross-site analysis of eddy flux tower measurements from the Brasil flux
10 network, *Agricultural and Forest Meteorology*, 182–183, 128–144, doi:10.1016/j.agrformet.2013.04.031, 2013.
- Rey, A., Pegoraro, E., Tedeschi, V., Parri, I. D., Jarvis, P. G., and Valentini, R.: Annual variation in soil respiration and its components in a coppice oak forest in Central Italy, *Global Change Biology*, 8, 851–866, doi:10.1046/j.1365-2486.2002.00521.x, 2002.
- Rodrigues, A., Pita, G., Mateus, J., Kurz-Besson, C., Casquilho, M., Cerasoli, S., Gomes, A., and Pereira, J.: Eight years of continuous carbon fluxes measurements in a Portuguese eucalypt stand under two main events: Drought and felling, *Agricultural and Forest Meteorology*,
15 151, 493–507, doi:10.1016/j.agrformet.2010.12.007, 2011.
- Roupsard, O., Bonnefond, J.-M., Irvine, M., Berbigier, P., Nouvellon, Y., Dautat, J., Taga, S., Hamel, O., Jourdan, C., Saint-André, L., Mialet-Serra, I., Labouisse, J.-P., Epron, D., Joffre, R., Braconnier, S., Rouzière, A., Navarro, M., and Bouillet, J.-P.: Partitioning energy and evapo-transpiration above and below a tropical palm canopy, *Agricultural and Forest Meteorology*, 139, 252–268, doi:10.1016/j.agrformet.2006.07.006, 2006.
- 20 Sagerfors, J., Lindroth, A., Grelle, A., Klemetsson, L., Weslien, P., and Nilsson, M.: Annual CO₂ exchange between a nutrient-poor, minerotrophic, boreal mire and the atmosphere, *Journal of Geophysical Research: Biogeosciences*, 113, 1–15, doi:10.1029/2006JG000306, 2008.
- Saito, M., Miyata, A., Nagai, H., and Yamada, T.: Seasonal variation of carbon dioxide exchange in rice paddy field in Japan, *Agricultural and Forest Meteorology*, 135, 93–109, doi:10.1016/j.agrformet.2005.10.007, 2005.
- 25 Schindler, D., Türk, M., and Mayer, H.: CO₂ fluxes of a Scots pine forest growing in the warm and dry southern upper Rhine plain, SW Germany, *European Journal of Forest Research*, 125, 201–212, doi:10.1007/s10342-005-0107-1, 2006.
- Schmid, H. P., Grimmond, C. S. B., Copley, F., Offerle, B., and Su, H.-B.: Measurements of CO₂ and energy fluxes over a mixed hardwood forest in the mid-western United States, *Agricultural and Forest Meteorology*, 103, 357–374, doi:10.1016/S0168-1923(00)00140-4, 2000.
- Scholes, R., Gureja, N., Giannecchini, M., Dovie, D., Wilson, B., Davidson, N., Piggott, K., McLoughlin, C., Velde, K. v. d., Freeman, A.,
30 Bradley, S., Smart, R., and Ndala, S.: The environment and vegetation of the flux measurement site near Skukuza, Kruger National Park, *Koedoe*, 44, 73–83, doi:10.4102/koedoe.v44i1.187, 2001.
- Scott, R. L., Jenerette, G. D., Potts, D. L., and Huxman, T. E.: Effects of seasonal drought on net carbon dioxide exchange from a woody-plant-encroached semiarid grassland, *Journal of Geophysical Research: Biogeosciences*, 114, 1–13, doi:10.1029/2008JG000900, doi:10.1029/2008JG000900, 2009.
- 35 Scott, R. L., Hamerlynck, E. P., Jenerette, G. D., Moran, M. S., and Barron-Gafford, G. A.: Carbon dioxide exchange in a semidesert grassland through drought-induced vegetation change, *Journal of Geophysical Research: Biogeosciences*, 115, 1–12, doi:10.1029/2010JG001348, 2010.



- Smallman, L., Moncrieff, J., and Williams, M.: WRFv3.2-SPAv2: development and validation of a coupled ecosystem-atmosphere model, scaling from surface fluxes of CO₂ and energy to atmospheric profiles, *Geoscientific Model Development*, 6, 1079–1093, doi:10.5194/gmd-6-1079-2013, 2013.
- Soegaard, H., Jensen, N. O., Boegh, E., Hasager, C. B., Schelde, K., and Thomsen, A.: Carbon dioxide exchange over agricultural landscape using eddy correlation and footprint modelling, *Agricultural and Forest Meteorology*, 114, 153–173, doi:10.1016/S0168-1923(02)00177-6, 2003.
- Soussana, J. F., Allard, V., Pilegaard, K., Ambus, P., Amman, C., Campbell, C., Ceschia, E., Clifton-Brown, J., Czobel, S., Domingues, R., Flechard, C., Fuhrer, J., Hensen, A., Horvath, L., Jones, M., Kasper, G., Martin, C., Nagy, Z., Neftel, A., Raschi, A., Baronti, S., Rees, R. M., Skiba, U., Stefani, P., Manca, G., Sutton, M., Tuba, Z., and Valentini, R.: Full accounting of the greenhouse gas (CO₂, N₂O, CH₄) budget of nine European grassland sites, *Agriculture, Ecosystems & Environment*, 121, 121–134, doi:10.1016/j.agee.2006.12.022, 2007.
- Spano, D., Snyder, R. L., Sirca, C., and Duce, P.: ECOWAT–A model for ecosystem evapotranspiration estimation, *Agricultural and Forest Meteorology*, 149, 1584–1596, doi:10.1016/j.agrformet.2009.04.011, 2009.
- Stoy, P. C., Katul, G. G., Siqueira, M. B. S., Juang, J.-Y., Novick, K. A., McCarthy, H. R., Oishi, A. C., Uebelherr, J. M., and an Ram Oren, H.-S. K.: Separating the effects of climate and vegetation on evapotranspiration along a successional chronosequence in the southeastern US, *Global Change Biology*, 12, 2115–2135, doi:10.1111/j.1365-2486.2006.01244.x, 2006.
- Sturm, P., Leuenberger, M., Moncrieff, J., and Ramonet, M.: Atmospheric O₂, CO₂ and δ¹³C measurements from aircraft sampling over Griffin Forest, Perthshire, UK, *Rapid Communications in Mass Spectrometry*, 19, 2399–2406, doi:10.1002/rcm.2071, 2005.
- Sulman, B. N., Desai, A. R., Cook, B. D., Saliendra, N., and Mackay, D. S.: Contrasting carbon dioxide fluxes between a drying shrub wetland in Northern Wisconsin, USA, and nearby forests, *Biogeosciences*, 6, 1115–1126, doi:10.5194/bg-6-1115-2009, 2009.
- Sun, Y., Fu, R., Dickinson, R., Joiner, J., Frankenberg, C., Gu, L., Xia, Y., and Fernando, N.: Drought onset mechanisms revealed by satellite solar-induced chlorophyll fluorescence: Insights from two contrasting extreme events, *Journal of Geophysical Research: Biogeosciences*, 120, 2427–2440, doi:10.1002/2015JG003150, <http://dx.doi.org/10.1002/2015JG003150>, 2015JG003150, 2015.
- Suni, T., Rinne, J., Reissell, A., Altimir, N., Keronen, P., Rannik, Ü., Maso, M. D., Kulmala, M., and Vesala, T.: Long-term measurements of surface fluxes above a Scots pine forest in Hyytiälä, southern Finland, 1996–2001, *Boreal Environment Research*, 8, 287–302, 2003.
- Syed, K. H., Flanagan, L. B., Carlson, P. J., Glenn, A. J., and Gaalen, K. E. V.: Environmental control of net ecosystem CO₂ exchange in a treed, moderately rich fen in northern Alberta, *Agricultural and Forest Meteorology*, 140, 97–114, doi:10.1016/j.agrformet.2006.03.022, 2006.
- Tedeschi, V., Rey, A., Manca, G., Valentini, R., Jarvis, P. G., and Borghetti, M.: Soil respiration in a Mediterranean oak forest at different developmental stages after coppicing, *Global Change Biology*, 12, 110–121, doi:10.1111/j.1365-2486.2005.01081.x, 2006.
- Thum, T., Aalto, T., Laurila, T., Aurela, M., Kolari, P., and Hari, P.: Parametrization of two photosynthesis models at the canopy scale in a northern boreal Scots pine forest, *Tellus B: Chemical and Physical Meteorology*, 59, 874–890, doi:10.1111/j.1600-0889.2007.00305.x, 2007.
- Tramontana, G., Jung, M., Schwalm, C. R., Ichii, K., Camps-Valls, G., Raduly, B., Reichstein, M., Arain, M. A., Cescatti, A., Kiely, G., Merbold, L., Serrano-Ortiz, P., Sickert, S., Wolf, S., and Papale, D.: Predicting carbon dioxide and energy fluxes across global FLUXNET sites with regression algorithms, *Biogeosciences*, 13, 4291–4313, doi:10.5194/bg-13-4291-2016, 2016.
- Ueyama, M., Ichii, K., Iwata, H., Euskirchen, E. S., Zona, D., Rocha, A. V., Harazono, Y., Iwama, C., Nakai, T., and Oechel, W. C.: Upscaling terrestrial carbon dioxide fluxes in Alaska with satellite remote sensing and support vector regression, *Journal of Geophysical Research: Biogeosciences*, 118, 1266–1281, doi:10.1002/jgrg.20095, 2013.



- Urbanski, S., Barford, C., Wofsy, S., Kucharik, C., Pyle, E., Budney, J., McKain, K., Fitzjarrald, D., Czikowsky, M., and Munger, J. W.: Factors controlling CO₂ exchange on timescales from hourly to decadal at Harvard Forest, *Journal of Geophysical Research: Biogeosciences*, 112, 1–25, doi:10.1029/2006JG000293, 2007.
- Vaccari, F. P., Lugato, E., Gioli, B., D’Acqui, L., Genesio, L., Toscano, P., Matese, A., and Miglietta, F.: Land use change and soil organic carbon dynamics in Mediterranean agro-ecosystems: The case study of Pianosa Island, *Geoderma*, 175–176, 29–36, doi:10.1016/j.geoderma.2012.01.021, 2012.
- Valentini, R., Angelis, P. d., Matteucci, G., Monaco, R., Dore, S., and Scarascia Mucnozza, G. E.: Seasonal net carbon dioxide exchange of a beech forest with the atmosphere, *Global Change Biology*, 2, 199–207, doi:10.1111/j.1365-2486.1996.tb00072.x, 1996.
- Verma, S. B., Dobermann, A., Cassman, K. G., Walters, D. T., Knops, J. M., Arkebauer, T. J., Suyker, A. E., Burba, G. G., Amos, B., Yang, H., Ginting, D., Hubbard, K. G., Gitelson, A. A., and Walter-Shea, E. A.: Annual carbon dioxide exchange in irrigated and rainfed maize-based agroecosystems, *Agricultural and Forest Meteorology*, 131, 77–96, doi:10.1016/j.agrformet.2005.05.003, 2005.
- Vickers, D., Thomas, C., and Law, B. E.: Random and systematic CO₂ flux sampling errors for tower measurements over forests in the convective boundary layer, *Agricultural and Forest Meteorology*, 149, 73–83, doi:10.1016/j.agrformet.2008.07.005, 2009.
- Wang, W., Liang, S., and Meyers, T.: Validating MODIS land surface temperature products using long-term nighttime ground measurements, *Remote Sensing of Environment*, 112, 623–635, doi:10.1016/j.rse.2007.05.024, 2008.
- Wilkinson, M., Eaton, E. L., Broadmeadow, M. S. J., and Morison, J. I. L.: Inter-annual variation of carbon uptake by a plantation oak woodland in south-eastern England, *Biogeosciences*, 9, 5373–5389, doi:10.5194/bg-9-5373-2012, 2012.
- Williams, C. A. and Albertson, J. D.: Soil moisture controls on canopy-scale water and carbon fluxes in an African savanna, *Water Resources Research*, 40, 1–14, doi:10.1029/2004WR003208, 2004.
- Wilske, B., Lu, N., Wei, L., Chen, S., Zha, T., Liu, C., Xu, W., Noormets, A., Huang, J., Wei, Y., Chen, J., Zhang, Z., Ni, J., Sun, G., Guo, K., McNulty, S., John, R., Han, X., Lin, G., and Chen, J.: Poplar plantation has the potential to alter the water balance in semiarid Inner Mongolia, *Journal of Environmental Management*, 90, 2762–2770, doi:10.1016/j.jenvman.2009.03.004, 2009.
- Wilson, T. B. and Meyers, T. P.: Determining vegetation indices from solar and photosynthetically active radiation fluxes, *Agricultural and Forest Meteorology*, 144, 160–179, doi:10.1016/j.agrformet.2007.04.001, 2007.
- Wohlfahrt, G., Anderson-Dunn, M., Bahn, M., Balzarolo, M., Berninger, F., Campbell, C., Carrara, A., Cescatti, A., Christensen, T., Dore, S., Eugster, W., Friborg, T., Furger, M., Gianelle, D., Gimeno, C., Hargreaves, K., Hari, P., Haslwanter, A., Johansson, T., Marcolla, B., Milford, C., Nagy, Z., Nemitz, E., Rogiers, N., Sanz, M. J., Siegwolf, R. T., Susiluoto, S., Sutton, M., Tuba, Z., Ugolini, F., Valentini, R., Zorer, R., and Cernusca, A.: Biotic, Abiotic, and Management Controls on the Net Ecosystem CO₂ Exchange of European Mountain Grassland Ecosystems, *Ecosystems*, 11, 1338–1351, doi:10.1007/s10021-008-9196-2, 2008a.
- Wohlfahrt, G., Hammerle, A., Haslwanter, A., Bahn, M., Tappeiner, U., and Cernusca, A.: Seasonal and inter-annual variability of the net ecosystem CO₂ exchange of a temperate mountain grassland: Effects of weather and management, *Journal of Geophysical Research: Atmospheres*, 113, 1–14, doi:10.1029/2007JD009286, 2008b.
- Xiao, J., Zhuang, Q., Baldocchi, D. D., Law, B. E., Richardson, A. D., Chen, J., Oren, R., Starr, G., Noormets, A., Ma, S., Verma, S. B., Wharton, S., Wofsy, S. C., Bolstad, P. V., Burns, S. P., Cook, D. R., Curtis, P. S., Drake, B. G., Falk, M., Fischer, M. L., Foster, D. R., Gu, L., Hadley, J. L., Hollinger, D. Y., Katul, G. G., Litvak, M., Martin, T., Matamala, R., McNulty, S., Meyers, T. P., Monson, R. K., Munger, J. W., Oechel, W. C., Paw, U. K. T., Schmid, H. P., Scott, R. L., Sun, G., Suyker, A. E., and Torn, M. S.: Estimation of net ecosystem carbon exchange for the conterminous United States by combining MODIS and AmeriFlux data, *Agricultural and Forest Meteorology*, 148, 1827–1847, 2008.



- Xiao, J., Zhuang, Q., Law, B. E., Chen, J., Baldocchi, D. D., Cook, D. R., Oren, R., Richardson, A. D., Wharton, S., Ma, S., Martin, T. A., Verma, S. B., Suyker, A. E., Scott, R. L., Monson, R. K., Litvak, M., Hollinger, D. Y., Sun, G., Davis, K. J., Bolstad, P. V., Burns, S. P., Curtis, P. S., Drake, B. G., Falk, M., Fischer, M. L., Foster, D. R., Gu, L., Hadley, J. L., Katul, G. G., Matamala, R., McNulty, S., Meyers, T. P., Munger, J. W., Noormets, A., Oechel, W. C., Paw U, K. T., Schmid, H. P., Starr, G., Torn, M. S., and Wofsy, S. C.: A continuous
5 measure of gross primary production for the conterminous United States derived from MODIS and AmeriFlux data, *Remote Sensing of Environment*, 114, 576–591, doi:10.1016/j.rse.2009.10.013, 2010.
- Xiao, J., Chen, J., Davis, K. J., and Reichstein, M.: Advances in upscaling of eddy covariance measurements of carbon and water fluxes, *Journal of Geophysical Research: Biogeosciences*, 117, G00J01, doi:10.1029/2011JG001889, 2012.
- Yamamoto, S., Murayama, S., Saigusa, N., and Kondo, H.: Seasonal and inter-annual variation of CO₂ flux between a temperate forest and
10 the atmosphere in Japan, *Tellus B: Chemical and Physical Meteorology*, 51, 402–413, doi:10.3402/tellusb.v51i2.16314, 1999.
- Yan, Y., Zhao, B., Chen, J., Guo, H., Gu, Y., Wu, Q., and Li, B.: Closing the carbon budget of estuarine wetlands with tower-based measurements and MODIS time series, *Global Change Biology*, 14, 1690–1702, doi:10.1111/j.1365-2486.2008.01589.x, 2008.
- Yang, F., Ichii, K., White, M. A., Hashimoto, H., Michaelis, A. R., Votava, P., Zhu, A.-X., Huete, A., Running, S. W., and Nemani, R. R.:
15 Developing a continental-scale measure of gross primary production by combining MODIS and AmeriFlux data through Support Vector
Machine approach, *Remote Sensing of Environment*, 110, 109–122, doi:10.1016/j.rse.2007.02.016, 2007.
- Yang, Y., Anderson, M., Gao, F., Hain, C., Kustas, W., Meyers, T., Crow, W., Finocchiaro, R., Otkin, J., Sun, L., and Yang, Y.: Impact of Tile
Drainage on Evapotranspiration in South Dakota, USA, Based on High Spatiotemporal Resolution Evapotranspiration Time Series From a
Multisatellite Data Fusion System, *IEEE Journal of Selected Topics in Applied Earth Observations and Remote Sensing*, 10, 2550–2564,
doi:10.1109/JSTARS.2017.2680411, 2017.
- 20 Zhang, W. L., Chen, S. P., Chen, J., Wei, L., Han, X. G., and Lin, G. H.: Biophysical regulations of carbon fluxes of a steppe and a cultivated
cropland in semiarid Inner Mongolia, *Agricultural and Forest Meteorology*, 146, 216–229, doi:10.1016/j.agrformet.2007.06.002, 2007.
- Zhang, Y., Xiao, X., Wu, X., Zhou, S., Zhang, G., Qin, Y., and Dong, J.: A global moderate resolution dataset of gross primary production of
vegetation for 2000–2016, *Scientific Data*, 4, doi:10.1038/sdata.2017.165, 2017.