



Coastline evolution of Portuguese low-lying sandy coast in the last 50 years: an integrated approach

Cristina Ponte Lira¹, Ana Nobre Silva¹, Rui Taborda¹, and Cesar Freire de Andrade¹

¹IDL - Instituto Dom Luiz, Faculdade de Ciências da Universidade de Lisboa, Campo Grande, 1749-016 Lisboa, Portugal

Correspondence to: Cristina Ponte Lira (fclira@fc.ul.pt)

Abstract.

Regional/global-scale information on coastline rates of change and trends is extremely valuable, but national-scale studies are scarce. A widely accepted standardized methodology for analysing long-term coastline change has been difficult to achieve, but is essential to conduct an integrated and holistic approach to coastline evolution and hence support coastal management actions. Additionally, databases providing knowledge on coastline evolution are of key importance to support both coastal management experts and users.

The main objective of this work is to present the first systematic, global and consistent long-term coastline evolution data of Portuguese mainland low-lying sandy

The methodology used quantifies coastline evolution using an unique and robust coastline indicator (the foredune toe), which is independent of short-term changes.

The dataset presented comprises: 1) two polyline sets, mapping the 1958 and 2010 sandy beach-dune systems coastline, both optimized for working at 1:50 000 scale or smaller, and 2) one polyline set representing long-term change rates between 1958 and 2010, estimated at each 250 m. The science data produced here are in Open Access at <http://doi.pangaea.de/10.1594/PANGAEA.853654> and can be used in other studies.

Results show beach erosion as the dominant trend, with a mean change rate of -0.24 ± 0.01 m/year for all mainland Portuguese beach-dune systems. Although erosion is dominant, this evolution is variable in signal and magnitude in different coastal sediment cell and also within each cell. The most relevant beach erosion issues were found in the coastal stretches of Espinho - Torreira and Costa Nova - Praia da Mira, both at sub-cell 1b; Cova Gala - Leirosa, at sub-cell 1c and Cova do Vapor - Costa da Caparica, at cell 4. Cells 1 and 4 exhibit a history of major human interventions interfering with the coastal system, many of which originated and maintained a sediment deficit. In contrast, cells 5 and 6 have been less intervened and show stable or moderate accretion behaviour.

1 Introduction

The coastal zone is intrinsically dynamic, where changes occur at different temporal and spatial scales. Along any sandy coastal stretch, changes in coastline position (erosion or accretion) are expected and occur in response to variations in sea-level, sediment budget and hydrodynamic conditions. As human demands and occupation grow in coastal areas, management



problems and challenges also increase, in order to accommodate both coastal change and occupation. Beach erosion is one of the leading management problems that coastal regions have to face worldwide (Phillips and Jones, 2006) and accurate information on coastline movement rates and trends is essential to support sustainable management strategies. This objective is particularly relevant in a climate change scenario, which may determine an increase in the intensity of coastal response (e.g. excess erosion induced by sea-level rise).

The idea that coastlines are under threat by climate change acceleration is relatively recent (Carter and Woodroffe, 1994) and has increased the demand for accurate knowledge on coastal evolution. This encouraged the development of numerous long-term (>30 years according to Fletcher *et al.* (2012)) studies worldwide which, in most cases, lack the broader scale perspective, evaluating change at micro/meso spatial scales and generally focusing only on known problematic areas.

Pioneer studies considering a national-scale approach to coastline change were promoted in the USA and Europe, in the early 21st century, by the USGS (United States Geological Survey)(USGS, 2004) and the European Commission (European Commission, 2004). The United States launched the National Assessment of Coastline Change Project, which delivered a number of reports organized by coastal regions (e.g Fletcher *et al.*, 2012). The European counterpart is the EUROSION project framework (European Commission, 2004), which conducted a country by country evaluation of coastal erosion at European scale and delivered 3 main final products: 1) online reports, including major findings and recommendations, 2) a GIS database, which includes Europe's coastline vectors at 1:100 000 scale, and 3) a Coastline Management Guide.

Despite this effort, there is still no consensual coastline definition for reporting coastal evolution at national to global scale or to ensure comparability between datasets. Therefore, most of the coastline evolution works are still not adequate for inter-comparison. This fact is even more striking as the 2012 European Environment Agency (EEA) report on climate change (EEA, 2012) does not include coastline position as an EEA indicator on threats to the coastal zone, because regular updates of this type of information is not expected.

In Portugal, coastline evolution studies are usually local to meso-scale in their spatial scope and essentially focus on problematic areas (e.g., Abecassis *et al.*, 1970; Barceló, 1971; Castanho *et al.*, 1974; Bettencourt and Ângelo, 1992; ?; Oliveira, 2005; Pinto and Teixeira, 2005; Veloso-Gomes *et al.*, 2009; Taveira Pinto *et al.*, 2009; Rebêlo *et al.*, 2011; Silva *et al.*, 2013); and used different coastline proxies (e.g., European Commission, 2004; Oliveira, 2005; Ferreira *et al.*, 2006; Rebêlo *et al.*, 2011; Cenci *et al.*, 2013). Thus, these analyses can not provide a complete and unified approach for all the Portuguese territory.

From the above, one may conclude that an approach using metrics that are consistent from one coastal zone to another is essential to address coastal evolution in an integrated and holistic manner. A single and robust coastal indicator capable of representing long-term change is indispensable and should be evaluated at a national and broader scale.


This work aims at presenting the first systematic, global and consistent long-term coastline evolution study of Portuguese mainland low-lying sandy coast at a national scale. Coastline evolution is quantified using a single robust coastline indicator (foredune toe), which is, to a larger extent, independent of short-term morphodynamic changes. The coastline and evolution data are fully and freely available at <http://doi.pangaea.de/10.1594/PANGAEA.853654> and can be used in other studies. This dataset comprises: 1) two polyline sets, mapping the 1958 and 2010 sandy beach-dune systems coastline, both optimized for



working at 1:50 000 scale or smaller, and 2) one polyline set representing long-term change rates between 1958 and 2010, estimated at each 250 m.

2 Study area

Portuguese mainland coastline extends south from Minho river to west of Guadiana's river mouth (Figure 1) along *circa* 900
5 km (variable with the scale of representation). The coast includes a wide range of morpho-sedimentary environments, such as beaches, cliffs, estuaries, lagoons and barrier islands (Andrade and Freitas, 2002; Ferreira and Matias, 2013). Coastal districts house around 3/4 of the population and generate around 80% of the gross national product (Duarte Santos *et al.*, 2014b), with an increasing economic activity on these areas, especially from tourism.

According to Andrade and Freitas (2002) the coast of mainland Portugal is high-mesotidal and wave-dominated, with energy
10 decreasing in sheltered West-East trending sections, which includes the Algarve south-facing littoral. 

2.1 Sediment cells

According to EUROSION resolution 1 (European Commission, 2004), the sediment status must be accounted for each coastal sediment cell. Sediment cells are independent of each other in terms of sediment transfers, which means actions taken within a specific cell may impact sections of the same cell but will not significantly affect adjacent cells.

15 The works of Andrade and Freitas (2002) and later of Duarte Santos *et al.* (2014a) defined and characterized 8 sediment cells (Figure 1) along the Portuguese mainland littoral, according to its geomorphological characteristics and sedimentary dynamics:

Cell 1 - Minho river mouth to Nazaré. This cell is divided in 3 sub-cells: from Minho to Douro rivers (sub-cell 1a), from Douro river to cape Mondego (1b) and from cape Mondego to Nazaré (sub-cell 1c).

20 **Sub-cell 1a** is characterized by a low rocky coast, with numerous small sandy and gravel beaches, sometimes extensive, whose development is strongly associated with local sheltering effects, in the first case, and river estuaries in the latter.

Sub-cell 1b coastline presents geomorphological characteristics similar to cell 1a at the north, and further south consists essentially of an extensive linear beach, backed by coastal dune systems and only interrupted by the Aveiro inlet. The southernmost section is constituted mainly by cliffs and sandy beaches.

25 **Sub-cell 1c** presents a rocky coast to the north, which becomes a highly developed sandy beach at Figueira da Foz, made by the retention effect of the Figueira da Foz port northern jetty. This sediment retention induced downdrift coastline retreat, which led to the construction of rigid structures, southern of Figueira da Foz port. Further south the coast is low, sandy and straight, culminating in cliffs bordered by narrow beaches, which extend until Nazaré neighbourhood.

Cell 2 - Nazaré to Peniche, which consists mainly of cliffs bordered by rocky platforms, north of Óbidos lagoon, and linear beaches, generally narrow, to the south.

30 **Cell 3** - Peniche to cape Raso. This section is dominated by cliffs presenting numerous pocket beaches, with very different geometry. The wider and short beaches are often limited by small dune fields, and developed next to stream mouths, whereas



linear and narrow beaches lacking dunes, sometimes with kilometric extent, are associated with the existence of natural headlands that provide limited sediment retention.

Cell 4 - Cape Raso to cape Espichel. In terms of its geomorphological characteristics, this cell can be divided into two distinct sectors, separated by the Tejo river mouth. Northwest of Tejo estuary the coast is dominated by cliffs, with a set of small embedded beaches, limited landward by cliffs or artificial structures and sheltered from the dominant NW wave regime. South of Tejo, the coast adopts an arched configuration, suggesting an equilibrium bay, forming a continuous sandy coast from Costa da Caparica to Bicas. Further south, the coastline mainly develops in cliffs, occasionally interrupted by small sandy or gravelly pocket beaches.

Cell 5 - Cape Espichel to Sines. The coast between cape Espichel and Sado inlet is sheltered from the prevailing wave regime and only few pocket beaches exist in indentations affecting the rocky plunging cliffs of the Arrábida chain. Between Troia peninsula and Sines, it is a continuous sandy coast, with an arched configuration, similar to that observed in Caparica-Espichel section. The beach is bordered by dunes in most of the sector, mainly north of Medronheiro; south of this point cliffs occur until Melides lagoon and, occasionally, between Sancha lagoon and Moinhos stream.

Cell 6 - Sines to cape S. Vicente. This stretch is dominated by cliffs, generally high, carved in resistant Paleozoic and Mesozoic rocks. These cliffs are disturbed by Mira, Odeceixe and Aljezur estuaries and lowlands which, together with cliff indentations, accommodate sandy and gravelly beaches, usually with reduced width. The beaches developed on larger stream mouths are often backed by dune systems.

Cell 7 - between cape S. Vicente and Olhos de Água. This cell is characterized by an extremely varied morphology, where cliff segments alternate with beaches confined between resistant headlands or developed at stream mouths and in barriers separating small lagoons/estuaries from the open ocean. From Lagos to Olhos de Água the coast is extremely crenulated. Lagos and Armação de Pera bays include dune systems with significant size.

Cell 8 - from Olhos de Água to Guadiana river mouth. The coastline is mainly dominated by a barrier islands system (Ria Formosa) and the Manta Rota - Vila Real de Santo António coastal plain. The western end, between Olhos de Água and Garrão, comprises a sandy beach bordered by cliffs. The barrier island system, which separates the sea from the second larger Portuguese lagoon, includes, from West to East, two peninsulas (Ancão and Cacela), five barrier islands (Barreta, Culatra, Armona, Tavira and Cabanas) and six tidal inlets (Ancão, Faro-Olhão, Armona, Fuseta, Tavira and Cacela inlets).

3 Methods

3.1 Beach coastline indicator

In coastal evolution studies the selection of a suitable coastline definition is a primary issue. Due to the extremely dynamic nature of this concept, coastline mapping is generally based on an indicator which, according to Boak and Turner (2005), is a feature used as proxy to represent the "true" coastline position.

Coastline indicators may be physical coastal features such as the bluff top/cliff top, landward edge of shore protection structure, berm crest, scarp edge, foredune toe and seaward vegetation line. Alternatively, other features representing the land/water



interface may also be used: e.g. high water line, mean high water line, wet/dry line or runup maxima (swash lines) or the instantaneous water line.

Long-term coastal evolution studies are based on discrete measurements that represent snapshots of the coastal system, usually separated by a large temporal gap. To obtain an unbiased measure of coastal evolution, the indicator should, therefore, be independent of both high frequency water level changes and seasonal beach morphological cycle.

In this work, which focus on low-lying sandy coasts backed by dunes, coastline is considered as the landward limit of the backshore and is represented by the foredune toe. This morphological feature, recognized as the less affected by short-term (tidal) and medium-term (seasonal) changes (Komar *et al.*, 2001; Ferreira *et al.*, 2006; Rio and Garcia, 2013), is thus adequate to measure long-term variations. The foredune toe indicator is described by either a slope break or the seaward limit of vegetation. The latter criteria was only used when the first was not clearly recognized. In cases where the beach is not backed by a dune (e.g. overwashed sections of sandy barriers, extensive blowouts in the backbeach) the afore-mentioned indicator could not be mapped.

3.2 Coastline mapping

3.2.1 Data sources

Two sets of data were used in the coastline extraction procedure:

- 1) digital aerial photographs from the USAF 1958 flight (photos taken in different days and no flight plan available to the authors) with 0.5 m of pixel resolution;

- 2) digital orthophotomaps of the year 2010 (IGEO, 2010) (photos taken in different days of 2010) with 0.2 m of pixel resolution.

3.2.2 Mapping procedures

Due to the unrectified nature of the 1958 aerial photographs, images were georeferenced using the 2010 orthophotomaps. The georeferencing procedure, consisting on the coordination of points on the image to be georeferenced with points on a geographically referenced dataset, was conducted according to Figure 2, in a GIS environment. The individual photos were grouped in mosaics covering continuous sandy coastal areas. Mosaicking minimizes misalignments, especially visible in borders of two contiguous images. Main advantages includes image spatial continuity, allowing for coastline location on longer coastal stretches and facilitates the search for common ground control points (GPCs) (Verhoeven *et al.*, 2012). Mosaics were georeferenced using GCPs, that corresponded to common elements in both datasets, evenly distributed along the coastline. The georeferencing was based on a *Spline* adjustment method (a piecewise polynomial that maintains continuity and smoothness between adjacent polynomials).

The work of Rocchini and Di Rita (2005) showed that in flat areas georeferencing by polynomial fit is a very robust tool, with performance similar to those obtained by orthorectification, reporting significant increases of the error as terrain becomes more rugged. In this present work an independent study for accuracy assessment related to the georeferencing process and



coastline vectorization was also conducted. Results from this evaluation will be used in coastline rates uncertainty assessment and are presented in the next section.

The coastline digitization process, which consisted in manually recognizing and digitizing the coastline indicator on the images, was conducted using a ranging visualization scale between 1:5 000 and 1:8 000. The coastline final position segments, for both analysed dates, were optimized for working at a 1:50 000 scale or smaller.

3.3 Coastline evolution

Coastline evolution rates of change (R) were calculated in a GIS environment using Digital Coastline Analysis System (Thieler *et al.*, 2009) and Coastline Change Mapper (Psuty *et al.*, 2010), both ArcGIS extensions. Transects were placed every 250 m, roughly perpendicular to the coastline trend. Rate of change results were grouped together along the same littoral cell and maximum ($Max(R)$), mean (\bar{R}) and minimum ($Min(R)$) rates were assessed for each one. Results are presented for the overall sandy beach-dune systems coastline as well.

3.3.1 Position and rate uncertainty

Several sources of error affect the accuracy of coastline position and consequently coastline change rates. Measurement uncertainties include errors related to coastline digitization (E_d) (Fletcher *et al.*, 2003), image resolution (E_{ir}) (Coyne *et al.*, 1999; Catalão *et al.*, 2002) and image rectification (E_r) (Shoshany *et al.*, 1996; Fletcher *et al.*, 2003).

According to Fletcher *et al.* (2003) these errors are random and uncorrelated and can be represented by a single measure (U_p) calculated as the square root of the sum of the squares (Coyne *et al.*, 1999; Fletcher *et al.*, 2003):

$$U_p = \sqrt{E_d^2 + E_r^2 + E_{ir}^2} \quad (1)$$

Fletcher *et al.* (2003) states another physical components of error, representing short-term variability in coastline position. In this study, these sources of error were eliminated by adopting the foredune shoreward edge approach, in accordance to other works (e.g Rio and Garcia, 2013).

The uncertainty related to the georeferencing procedures (E_r) of 1958 aerial photos was evaluated using 3 mosaics. Root mean square errors (RMSE) were calculated for each one. Results show a maximum RMSE of 4.79 m for all 3 mosaics, hence, E_r was considered as 5 m. Uncertainties related to the vectorization process of the coastline indicator by different operators (E_d) were estimated as 7 m. Image resolution is 0.5 m (E_{ir}). Thus, $U_{p,1958}$ was estimated as 8.6 m.

In a similar matter to the aerial photos, the uncertainties related to the use of orthophotomaps were estimated as: $E_r = 0$, due to its rectified nature, $E_d = 5$ m and $E_{ir} = 0.2$ m. Therefore, $U_{p,2010}$ was estimated as 5.0 m.

The coastline change rate uncertainty (U_R) is calculated using the uncertainty values for both coastlines ($U_{p,1958}$ and $U_{p,2010}$) and the time frame (t) between them as:

$$U_R = \frac{\sqrt{U_{p,1958}^2 + U_{p,2010}^2}}{t} \quad (2)$$

In this work, the uncertainty affecting coastline change rate was calculated as ± 0.2 m/ year, for the 52 year period of analysis.



The uncertainty of a mean rate can be calculated, according to Fletcher *et al.* (2012), as the root sum of squares of rate uncertainties (U_R) at all transects divided by their total number (n):

$$U_{\bar{R}} = \frac{\sqrt{\sum_{i=1}^n U_{R,i}^2}}{n} \quad (3)$$

$U_{\bar{R}}$ was evaluated for each individual sediment cell taking into account the number of transects in each one, and the same procedure was applied to all low-lying sandy coastline of mainland Portugal. $U_{\bar{R}}$ values are shown in Table 1.

4 Results and Discussion

The coastline evolution dataset comprises: 1) two coastlines, an older one dated 1958 and a modern one dated 2010, and 2) long-term change rates between 1958 and 2010, which were estimated at 250 m interval assuming a linear rate of change. All science data are available as polylines and in Open Access at <http://doi.pangaea.de/10.1594/PANGAEA.853654>. These results have also been incorporated as an update of the EUROSION Project information on low-lying sandy coastal ribbons of mainland Portugal, which will be made available by the EMODnet project (EMODnet, 2009), in collaboration with IPMA (Instituto do Mar e da Atmosfera) agency.

Table 1 shows maximum, minimum and mean coastline evolution rates found in each sediment cell and for the total coastline of mainland Portugal. The total length occupied by sandy beach-dune systems corresponds to *circa* 40% of the total mainland Portuguese coastline.

Sub-cell 1a presents an erosion maximum of -1.84 ± 0.2 m/year, mainly southward of the Lima estuary. An accretion maximum of $+5.83 \pm 0.2$ m/year is reached next to the same river mouth, due to interference of both harbour jettys in sediment transport patterns. The mean rate of change is -0.29 ± 0.02 m/year showing an erosive trend (Figure 3). According to Duarte Santos *et al.* (2014a) this pattern is related with the reduction in river sediment supply and harbour dredging.

Sub-cell 1b is dominated by an erosional trend with an average retreat rate of -0.91 ± 0.01 m/year, this figure exceeding by a factor of 3 to 5 the average recession observed elsewhere along the same coast and the global average. Erosional trends extend almost continuously from the Douro river mouth to Torreira and also further south, from the Aveiro inlet to Praia da Mira, where a maximum rate of change (-7.38 ± 0.2 m/year) is observed. Accretional trends are observed updrift of significant obstacles to littoral drift such as cape Mondego and Aveiro jetties (Figure 3). Similarly to sub-cell 1a the main factor driving erosion is the loss of fluvial sediment supply and sediment retention in artificial structures. This sub-cell contains the most vulnerable areas concerning the erosion risk in Portugal (Duarte Santos *et al.*, 2014a).

In sub-cell 1c, erosion is mainly concentrated in its northern section up to about 20 km southward of the Mondego river mouth, in relation with harbour development works, including dredging and jetties. Here the retreat rates locally reach a maximum of -3.77 ± 0.2 m/year at Lavos. Further south, accretion dominates reaching a maximum of $+1.39 \pm 0.2$ m/year in the vicinity and updrift of Nazaré, related with sediment retention by a rocky headland. Mean coastline rates of change indicates a general erosional trend, with a value of -0.34 ± 0.01 m/year (Figure 4).



Cell 2 presents a set of 5 discontinuous sandy beach-dune systems with a mean evolution rate of -0.17 ± 0.03 m/year. Erosional coastal stretches are found at Nazaré-Salgados, Cova da Areia and Baleal embayment, east of Peniche. Accretion was detected in São Martinho do Porto bay and Óbidos sand barrier, with maximum of $+1.63 \pm 0.2$ m/year in the former case (Figure 4).

5 Cell 3 shows rare beach-dune systems confined to coastline indentations in relation to small river mouths. The signal and rate of change are site specific, with erosion at Consolação, Ponta da Lamporeira and Guincho (north of Cape Raso) (-0.49 , -0.22 and -0.65 ± 0.2 m/year respectively), and accretion at Areia Branca, Santa Rita and Ponta da Lamporeira ($+0.74$, $+1.06$ and $+0.23 \pm 0.2$ m/year) (Figure 4). The mean coastline rate of change ($+0.02 \pm 0.04$ m/year) is within the method uncertainty, indicating no significant long-term evolution. This result is compatible with negligible anthropogenic influence in sediment supply, thus the measured changes essentially reflect the coastal system natural variability.

Cell 4 northern sector, trending East-West, contains only small pocket beaches limited by either cliffs or artificial structures and were not considered in this study. The southern sector (extending from Cova do Vapor until Bicas) is dominated by one continuous sandy beach-dune system, north of Lagoa de Albufeira, and by beaches backed by cliffs to the south. Coastal change was not measured at Costa da Caparica due to the existence of a seawall. Likewise, in places between Costa da Caparica and Lagoa de Albufeira, where the lack of dune vegetation and overexposure of the 1958 photographs precluded the coastline indicators identification, coastal change was not measured. In this sector, two contrasting trends were found: 1) an intense erosional trend with a maximum of -4.57 ± 0.2 m/year, southward and next to the Tejo river mouth, north of Costa da Caparica and 2) south of Costa da Caparica, a mild accretional trend alternating with stable stretches, reaching a maximum of $+1.20 \pm 0.2$ m/year at Meco (Figure 5). Globally, this sector presents a slight erosive trend with a $+0.04 \pm 0.03$ m/year of mean rate, despite the strong erosive tendency north of Costa da Caparica. The erosional process north of Costa da Caparica has been aggravated in the second quarter of the XXth century due to sand deficit in relation to intensive dredging; in response, a seawall and a groyne field were built (Appendix I - Duarte Santos *et al.*, 2014a). More recently the beaches were object of artificial nourishment (Appendix VI - Duarte Santos *et al.*, 2014a). Coastal retreat rates reported here would have been higher in the absence of beach nourishment.

25 The geomorphological settings of cells 5 and 4 are broadly homothetic, but the intensity and spatial distribution of erosion/accretion rates are different. In cell 5, the northern tip of Troia sand spit presents the largest accretion trend ($+8.18 \pm 0.2$ m/year). The erosion maximum, located immediately southward of the accretion area, is -1.09 ± 0.2 m/year (Figure 5). In this sector, mean coastline rates of change reveals the highest accretional trend for all sediment cells in mainland Portugal ($+0.45 \pm 0.01$ m/year).

30 Cell 6, which presents geomorphological similarities with cell 3, shows both the maximum erosive trend (-1.32 ± 0.2 m/year) and the maximum accretion trend ($+3.11 \pm 0.2$ m/year) close to Vila Nova de Milfontes. The mean rate of change in beach-dune systems is $+0.28 \pm 0.06$ m/year, translated in an overall accretional trend (Figures 5).

In the western south facing Algarve coast, Cell 7 shows a maximum erosion rate of -0.66 ± 0.2 m/year at Armação de Pera bay and a maximum rate of accretion of $+1.96 \pm 0.2$ m/year at Lagos bay. The mean rate of change is $+0.28 \pm 0.03$ m/year, revealing an overall accretional trend (Figures 6).



Cell 8 presents a complex evolution pattern, with sections in erosion alternating with sections in accretion. This pattern is mostly related with the morphological evolution of Ria Formosa tidal inlets, determined by either natural or artificial causes (Figure 8). The maximum and minimum values should be interpreted with caution because they represent localized effects of inlet-barrier tip morphological readjustments. Moreover, retention effects induced by jetties also contributed to high values of change (e.g Faro and Guadiana inlets). The erosion maximum of -8.96 ± 0.2 m/year is observed at the western tip of Cacela barrier and the accretion maximum of $+12.99 \pm 0.2$ m/year at the eastern boundary of Armona inlet (Figure 6). The mean evolution rate of change for this section falls within the uncertainty range ($+0.01 \pm 0.01$ m/year), which indicates an overall balanced coastal sediment budget.

Figure 7 summarizes results of long-term coastline change assessment at a country scale. 40% of Portuguese mainland coastal territory is occupied by sandy beach-dune systems depicting an overall erosional tendency of -0.24 ± 0.01 m/year. Although beach erosion is dominant, this evolution is variable in signal and magnitude along the 8 sediment cells considered and within each cell (Figure 7). Cell 1, and particularly sub-cell 1b, stands out in this study by the intensity and extent of the erosional behaviour. This coastal ribbon has a long history of human interventions that originated and maintained a sediment deficit. In contrast, cells 5 and 6 have been less intervened and show stability or moderate accretion. Sandy beach front areas showing chronic coastal erosion are associated with man-induced deficit in the sediment budget.

5 Conclusions

This work characterizes coastline evolution of low-lying sandy coasts using a methodology that: 1) is consistent from one coastal region to another and 2) is independent of short-term change, as it quantifies change using a single robust coastline indicator (foredune-toe), adequate for applications at a national scale. Furthermore, a complete dataset derived with this methodology and applied to all sandy beach-dune systems in mainland Portugal are available in Open Access at <http://doi.pangaea.de/10.1594/PANGAEA.853654>.

The dataset, comprising 2 coastline sets (1958 and 2010) and long-term (52 years) change rates estimated every 250 m, is the first systematic, global and consistent long-term coastline evolution study of Portuguese mainland low-lying sandy coast. These data can be used in other studies, and thus represent an important tool to support both coastal experts and end-users.

Coastline evolution results showed an overall erosional tendency for the Portuguese mainland low-lying sandy coast, presenting a mean rate of -0.24 ± 0.01 m/year. Despite this result, sandy beach-dune systems display a variable evolution, both in signal and intensity, along and within the 8 coastal sediment cells of the studied coast. The most concerning beach erosion issues are located on cells 1 and 4, particularly on the coastal stretches of Espinho - Torreira, Costa Nova - Praia da Mira, Cova Gala - Leirosa and Cova do Vapor - Costa da Caparica. Cells standing out by the intensity and extent of the erosional behaviour exhibit major human interventions, many of which originated and maintained a sediment deficit. In contrast, cells 5 and 6 have been less intervened and show stable or moderately accretional behaviour. Thus, sandy beach front areas where coastal erosion is chronic are associated with man-induced deficit in the sediment budget.



Long-term coastal evolution studies should also integrate short-term analysis in order to assess acceleration patterns related to climate change effects and also evaluate management measures. The methodology proposed here can also be applied in the context of short-term analysis (<30 years), using smaller time-frames. This integration will be addressed in future works. Further investigation is necessary to extend this methodology to other coastal geomorphological contexts (e.g. beach backed
5 by rocky coasts), which will also be the objective of future studies.

Author contributions. C. Ponte Lira, A. N. Silva, R. Taborda and C. F. Andrade developed the methodology, C. Ponte Lira and A.N. Silva tested, validated and applied the methodology to all Portuguese mainland sand-dune systems. C. Ponte Lira wrote the manuscript with contributions from all co-authors.

Acknowledgements. First author is supported by FCT fellowship #SFRH/BPD/81800/2011. We acknowledge project CISML (*Criação e
10 implementação de um sistema de monitorização no litoral abrangido pela área de jurisdição da Administração da Região Hidrográfica do Tejo*) (Grant No. QREN - POVT: Operation POVT-12-0233-FCOES-000034, Portuguese Environmental Agency - APA, I.P./Administração da Região Hidrográfica do Tejo) for contributing to make this study possible. Publication supported by project FCT UID/GEO/50019/2013 - Instituto Dom Luiz. We thank: 1) Eng. A. Mota Lopes (APA) for the support in coastline extraction procedures; 2) P. Brito and P. Terrinha
15 (IPMA) for the opportunity to contribute to the Portuguese mainland coastline version submitted to the EMODnet database on the Coastal behaviour area.



References

- Abecassis, F., Castanho, J. and Matias, M.: Coastal regime. Carriage of material by swell and currents. Model studies and in situ observations. influence of port structures. Coastal defence works. Breakwaters. Memória no 362, LNEC, Lisbon, Portugal, 30pp, 1970.
- Andrade, C. and Freitas, M. C.: Coastal Zones, in: Climate Change in Portugal. Scenarios, Impacts and Adaptation Measures - SIAM project, Santos F. D., Forbes, K. and Moita, R. (Ed), Gradiva, Lisboa, Portugal, 173-2019, 2002.
- 5 Barceló, J.P.: Experimental study of the hydraulic behaviour of inclined groin systems. Memória no 394, LNEC, Lisbon, Portugal, 20pp, 1971.
- Bettencourt, P. and Ângelo, C.: Faixa costeira Centro Oeste (Espinho - Nazaré): enquadramento geomorfológico evolução recente. Geonovas, no Especial 1 (A Geologia e o Ambiente): 7-30, Lisboa, 1992. (in Portuguese)
- 10 Boak, E. H. and Turner, I. L.: Coastline Definition and Detection: A Review, *J. Coast. Res.*, 214, 688-703, doi:10.2112/03-0071.1, 2005.
- Carter, R. W. G. and Woodroffe, C. D.: Coastal evolution: an introduction, in: Coastal Evolution: Late Quaternary Coastline Morphodynamics, Carter, R. W. G., and Woodroffe (Ed), Cambridge University Press, United Kingdom, 523, 1994.
- Castanho, J., Gomes, N., Carvalho, J., Vera-Cruz, D., Araújo, O., Teixeira, A. and Weinholtz, M.: Means of controlling littoral drift to protect beaches, dunes, estuaries and harbour entrances. Establishment of artificial beaches. Memória no 448, LNEC, 26 pp., 1974.
- 15 Catalão, J., Catita, C., Miranda, J. and Dias, J.: Photogrammetric analysis of the coastal erosion in the Algarve (Portugal), *Géomorphologie Reli. Process. Environ.*, No. 2, 119-126, available at: <http://edition.cens.cnrs.fr/revue/grpe/2002/v/n2/010855ar.html>, 2002.
- Cenci, L., Disperati, L., Sousa, L. P., Phillips, M. and Alves, F. L.: Geomatics for Integrated Coastal Zone Management: multitemporal coastline analysis and future regional perspective for the Portuguese Central Region, *J. Coast. Res.*, 65, 1349-1354, doi:10.2112/SI65-228.1, 2013.
- 20 Coyne, M.A., Fletcher, C.H. and Richmond, B.M.: Mapping coastal erosion hazards in Hawaii: observations and errors, *J. Coast. Res.*, SI 28, 171-184, 1999.
- Duarte Santos, F., Mota Lopes, A., Moniz, G, Ramos, L. and Taborda, R.: Gestão da Zona Costeira: O Desafio da Mudança - Relatório do Grupo do Litoral, Report delivered to the Portuguese Government in the Littoral Group framework, 242 pp., 2014a. (in Portuguese)
- Duarte Santos, F., Mota Lopes, A., Moniz, G, Ramos, L. and Taborda, R.: Gestão da Zona Costeira: O Desafio da Mudança - Sumário Executivo e Recomendações, Relatório do Grupo do Litoral, Report delivered to the Portuguese Government in the Littoral Group framework, 25 21 pp., 2014b. (in Portuguese)
- EMODnet Database- European Marine Observation and Data Network, European Commission Directorate-General for Maritime Affairs and Fisheries (DG MARE), Marine Knowledge 2020 strategy, <http://www.emodnet.eu/>, 2009.
- European Commission: Living with coastal erosion in Europe - Sediment and space for sustainability, Luxembourg office for official publications of the European Commission, <http://www.euroseion.org/reports-online/reports.html>, 2004.
- 30 EEA: Climate change, impacts and vulnerability in Europe 2012 - An indicator report. EEA Report, No 12/2012, Copenhagen, 300pp, doi: 10.2800/6671, 2012.
- Ferreira, O., Garcia, T., Matias, A., Taborda, R. and Dias, J. M. A.: An integrated method for the determination of set-back lines for coastal erosion hazards on sandy shores, *Cont. Shelf Res.*, 26(9), 1030-1044, doi:10.1016/j.csr.2005.12.016, 2006.
- 35 Ferreira, O. and Matias, A.: Portugal. In: Coastal Erosion and Protection in Europe, Williams, A. and Pranzini, E. (Ed), Routledge, 457pp, doi:10.4324/9780203128558, 2013.



- Fletcher, C., Rooney, J., Barbee, M., Lim, S. and Richmond, B. M.: Mapping coastline change using digital orthophotogrammetry on Maui, Hawaii, *J. Coast. Res.* SI 38, 106-124, 2003.
- Fletcher, C.H., Romine, B.M., Genz, A.S., Barbee, M.M., Dyer, M., Anderson, T.R., Lim, S.C., Vitousek, S., Bochicchio, C. and Richmond, B.M.: National assessment of coastline change - Historical coastline change in the Hawaiian Islands, U.S. Geological Survey Open-File Report 2011-1051, 55 pp, <http://pubs.usgs.gov/of/2011/1051>, 2012.
- IGeo: orthophotomaps: <http://www.igeo.pt>, last access: May 2015, 2010.
- Komar, P.D., Diaz-Mendez, G.M. and Marra J.J.: Stability of the New River Spit, and the position of Oregon's beach-zone line. *J. Coast. Res.*, 17(3), 625-635, 2001.
- Oliveira, S.: Evolução Recente da Linha de Costa no Troço Costeiro Forte Novo - Garrão (Algarve). Ms thesis, University of Lisbon, Portugal, 183pp., http://enggeoespacial.fc.ul.pt/ficheiros/teses/tese_sergio_oliveira.pdf, 2005. (in Portuguese)
- Phillips, M. R. and Jones, A. L.: Erosion and tourism infrastructure in the coastal zone: Problems, consequences and management, *Tour. Manag.*, 27(3), 517-524, doi:10.1016/j.tourman.2005.10.019, 2006.
- Pinto, C. and Teixeira, S. B.: Beach Rotation and Coastal Erosion in Armação de Pera Bay. The Example of Salgados - Galé Sector (Algarve - Portugal). International Conference on Coastal Conservation and Management (ICCCM) in the Atlantic and Mediterranean, Tavira, Portugal, 331-334, 2005.
- Psuty, N.P., Duffy, M., Pace, J.F., Skidds, D.E. and Silveira, T.M.: Northeast Coastal and Barrier Network geomorphological monitoring protocol: part I - ocean coastline position, Natural Resource Report NPS/NCBN/NRR - 2010/185, National Park Service, Fort Collins, Colorado, 2010.
- Rebêlo, L., Ferraz, M., Brito, P. and Terrinha, P.: Quantification of sediments accumulated in the NW sector of Tróia Peninsula (Portugal) between 1928 and 1995, *J. Coast. Conserv.*, 16(3), 261-268, doi:10.1007/s11852-011-0171-2, 2011.
- Río, L. and Gracia, F. J.: Error determination in the photogrammetric assessment of coastline changes, *Nat. Hazards*, 65(3), 2385-2397, doi:10.1007/s11069-012-0407-y, 2013.
- Rocchini, D. and Di Rita, A.: Relief effects on aerial photos geometric correction, *Appl. Geogr.*, 25(2), 159-168, doi:10.1016/j.apgeog.2005.03.002, 2005.
- Shoshany, M., Golik, A., Degani, A., Lavee, H. and Gvirtzman, G.: New evidence for sand transport direction along the coastline of Israel, *J. Coast. Res.*, 12(1):311-325, 1996.
- Silva, A., Lira, C., Andrade, C., Taborda, R. and Freitas, M.C.: Análise da evolução da linha de costa no litoral baixo arenoso nos últimos 50 anos. In: Criação e implementação de um sistema de monitorização no litoral abrangido pela área de jurisdição da Administração da Região Hidrográfica do Tejo, Technical Report. Entregável 1.2.2.2. a., [online] Available at: http://www.apambiente.pt/_zdata/Políticas/Agua/Ordenamento/SistemaMonitorizacaoLitoral/E_1.2.2.2_a_Linha%20de%20costa.pdf, 2013. (in Portuguese)
- Taveira Pinto, F., Pais Barbosa, J. and Veloso Gomes, F.: Coastline Evolution at Esmoriz-Furadouro Stretch (Portugal), *J. Coast. Res.*, SI 56, 673-677, [online] Available from: http://e-geo.fcsh.unl.pt/ICS2009/_docs/ICS2009_Volume_I/673.677_F.Taveira-Pinto_ICS2009.pdf, 2009.
- Thieler, E.R., Himmelstoss, E.A., Zichichi, J.L. and Ergul, A.: Digital Coastline Analysis System (DSAS) version 4.0 - An ArcGIS extension for calculating coastline change, U.S. Geological Survey Open-File Report 2008-1278, <http://woodshole.er.usgs.gov/project-pages/DSAS/version4/>, 2009.
- USGS - Coastal and Marine Geology Program: National Assessment of Coastline Change Project, <http://coastal.er.usgs.gov/coastline-change/>, last access: September 2015, 2004.



Veloso-Gomes, F., Costa, J., Rodrigues, A., Taveira-Pinto, F., Pais-Barbosa, J. and Neves, L.: Costa da Caparica Artificial Sand Nourishment and Coastal Dynamics, *J. Coast. Res.*, SI(56), 678-682 [online] Available from: http://e-geo.fesh.unl.pt/ICS2009/_docs/ICS2009_Volume_I/678.682_F.Veloso-Gomes_ICS2009.pdf, 2009.

5 Verhoeven, G., Doneus, M., Briese, C. and Vermeulen, F.: Mapping by matching: a computer vision-based approach to fast and accurate georeferencing of archaeological aerial photographs, *J. Archaeol. Sci.*, 39(7), 2060-2070, doi:10.1016/j.jas.2012.02.022, 2012.



Table 1. Minimum ($Min(R)$), maximum ($Max(R)$) and mean (\bar{R}) of evolution rates (R) for sandy beach-dune systems (SBDS) coastline. Total coastline length (km) and SBDS coastline length (in km and in percentage). All values are presented for each sediment cell and for all mainland Portugal SBSD coastline.

Cell	Location ¹ Start End	$Min(R) \pm U_R$ (m/year)	$Max(R) \pm U_R$ (m/year)	$\bar{R} \pm U_{\bar{R}}$ (m/year)	² Total coastline length (km)	³ SBDS coastline length (km)	³ SBDS coastline length (%)
1a	41°51'47N / 8°52'13W 41°8'51N / 8°40'28W	-1.94±0.2	5.63 ±0.2	-0.29 ±0.02	95	48	50
1b	41°8'51N / 8°40'28W 40°11'11N / 8°54'31W	-7.38 ±0.2	4.67 ±0.2	-0.91 ±0.01	120	91	75
1c	40°11'11N / 8°54'31W 39°36'16N / 9°5'6W	-3.77 ±0.2	2.75 ±0.2	-0.19 ±0.01	69	49	72
2	39°36'16N / 9°5'6W 39°21'30N / 9°24'27W	-1.07 ±0.2	1.63 ±0.2	-0.17 ±0.03	54	13	24
3	39°21'30N / 9°24'27W 38°42'29N / 9°29'4W	-0.65 ±0.2	1.06 ±0.2	0.02 ±0.04	107	6	6
4	38°42'29N / 9°29'4W 38°24'50N / 9°13'19W	-4.57 ±0.2	1.20 ±0.2	-0.04 ±0.03	32	16	50
5	38°24'50N / 9°13'19W 37°57'14N / 8°53'14W	-1.09 ±0.2	8.18 ±0.2	0.45 ±0.01	99	53	54
6	37°57'14N / 8°53'14W 37°1'19N / 8°59'44W	1.32 ±0.2	3.11 ±0.2	0.28 ±0.06	133	8	6
7	37°1'19N / 8°59'44W 37°5'23N / 8°11'4W	-0.66 ±0.2	1.96 ±0.2	0.23 ±0.03	94	11	12
8	37°5'23N / 8°11'4W 37°9'57N / 7°23'38W	-8.96 ±0.2	12.99 ±0.2	0.01 ±0.01	84	56	66
All	-60 518 / 244 795 64 870 / -277 252	-8.96 ±0.2	12.99 ±0.2	-0.24 ±0.01	887	350	40

¹ Latitude / Longitude in ETRS 89; ²Total coastline length was estimated using the available EUROSION coastline (European Commission, 2004) for the Portuguese mainland littoral; ³SBDS coastline length was calculated using the proposed 2010 Coastline.

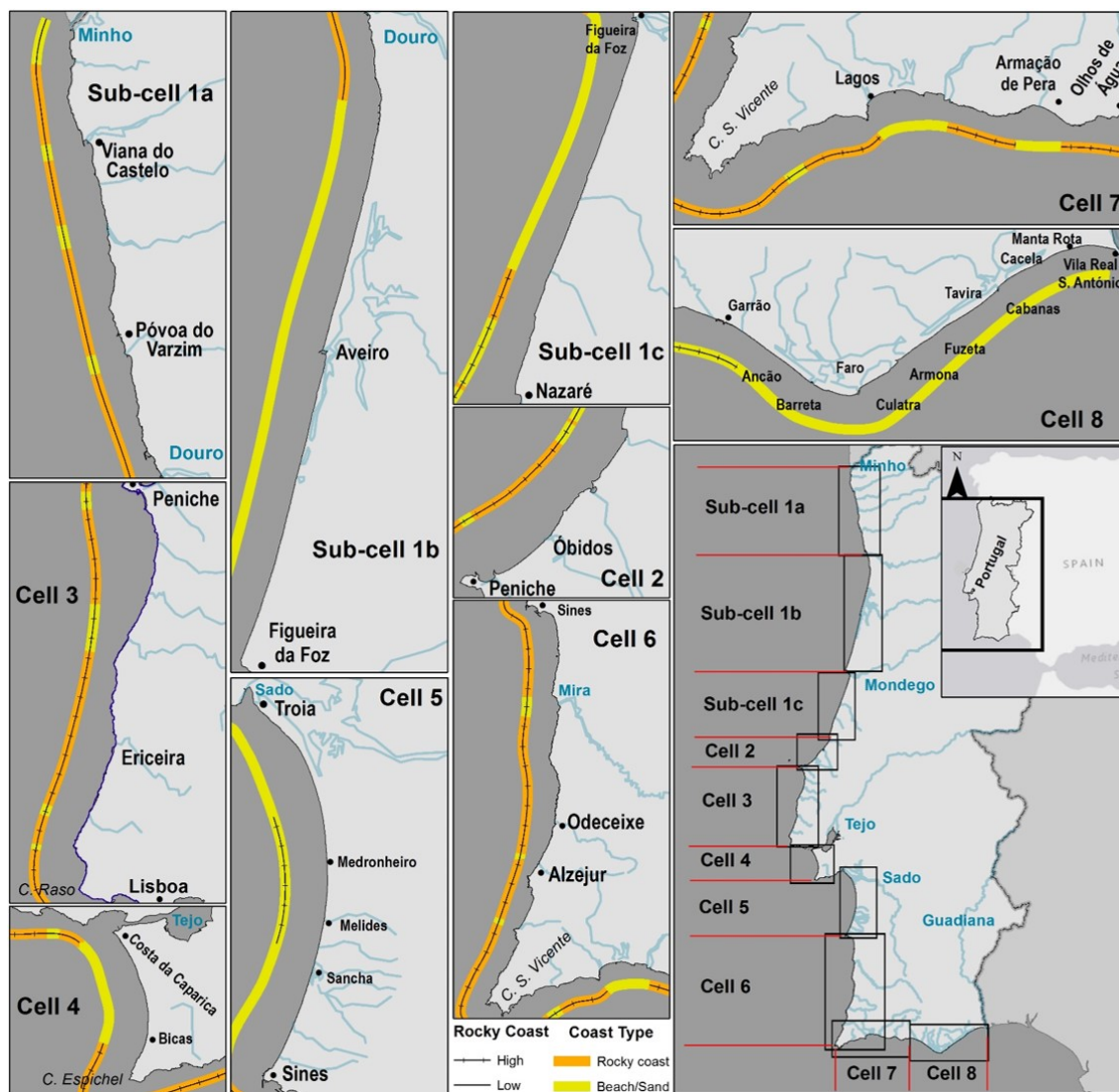


Figure 1. Sediment cells for the Portuguese mainland coast (cell limits in red) and coastal characterization.

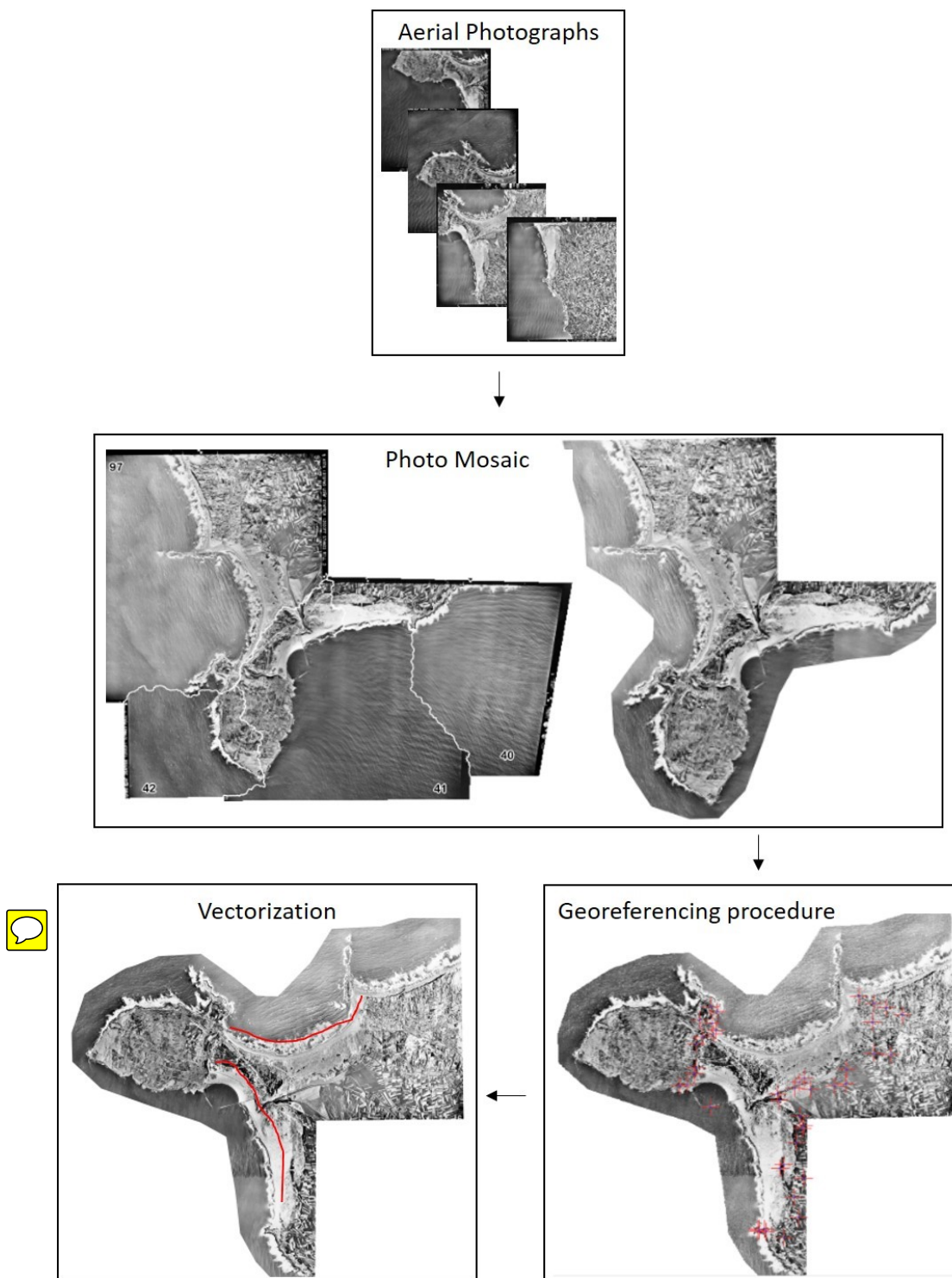


Figure 2. Flowchart procedures for using aerial photographs to extract coastline indicators.

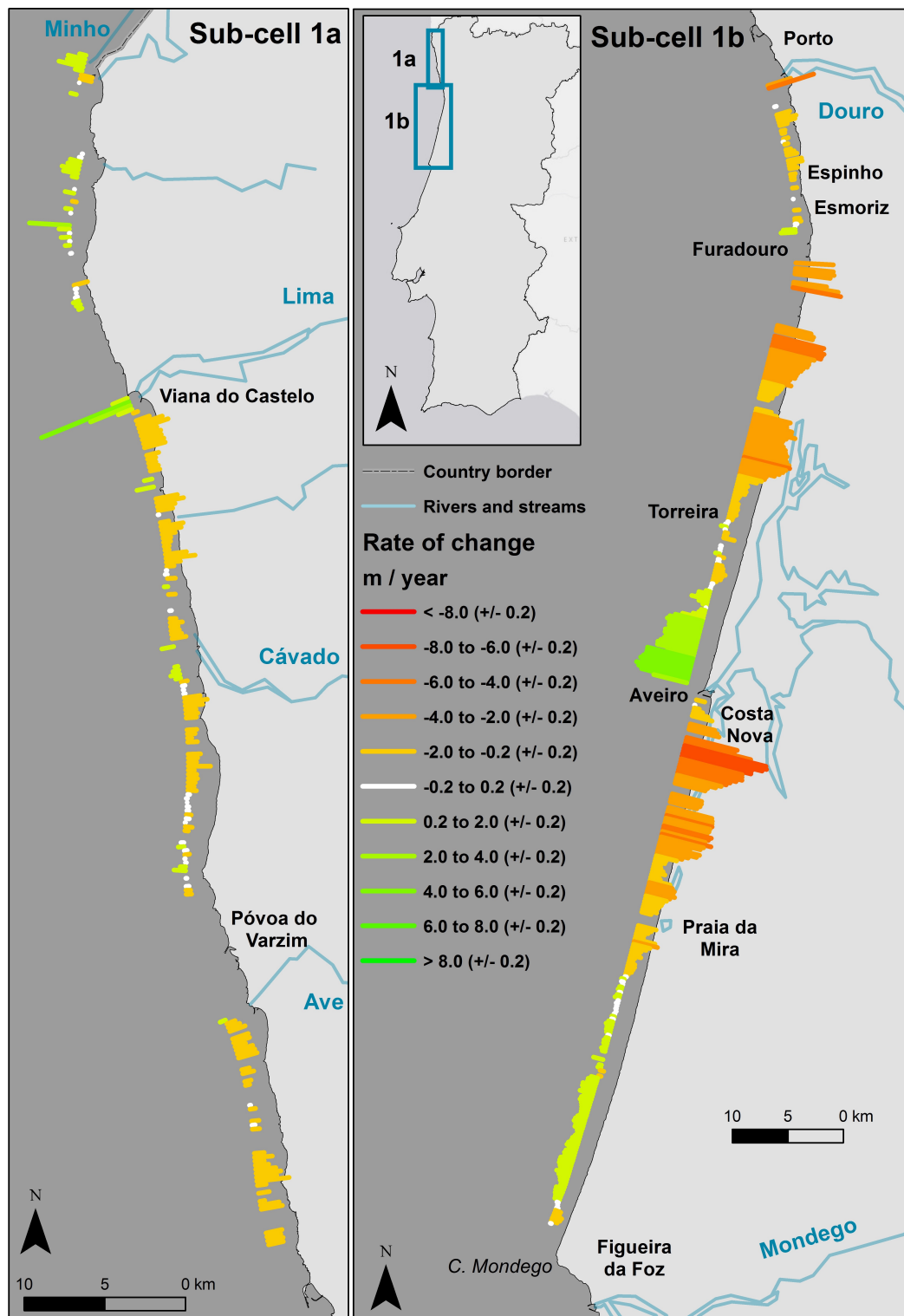


Figure 3. Long-term coastline rates of change in meters per year for sediment sub-cells 1a and 1b.

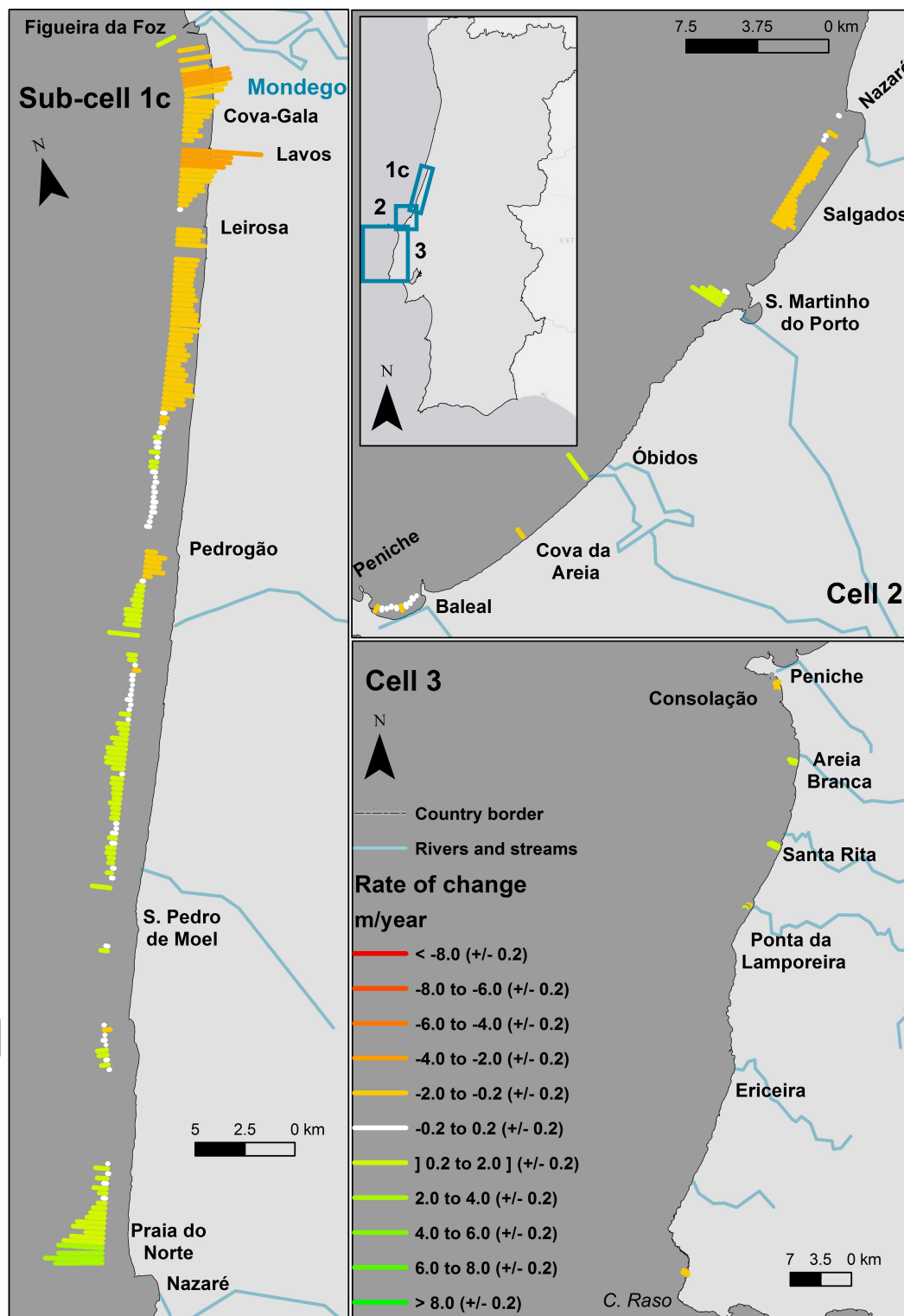


Figure 4. Long-term coastline rates of change in meters per year for sediment sub-cell 1c, cells 2 and 3. Note: Sub-cell 1c coast is represented with a 15° rotation.

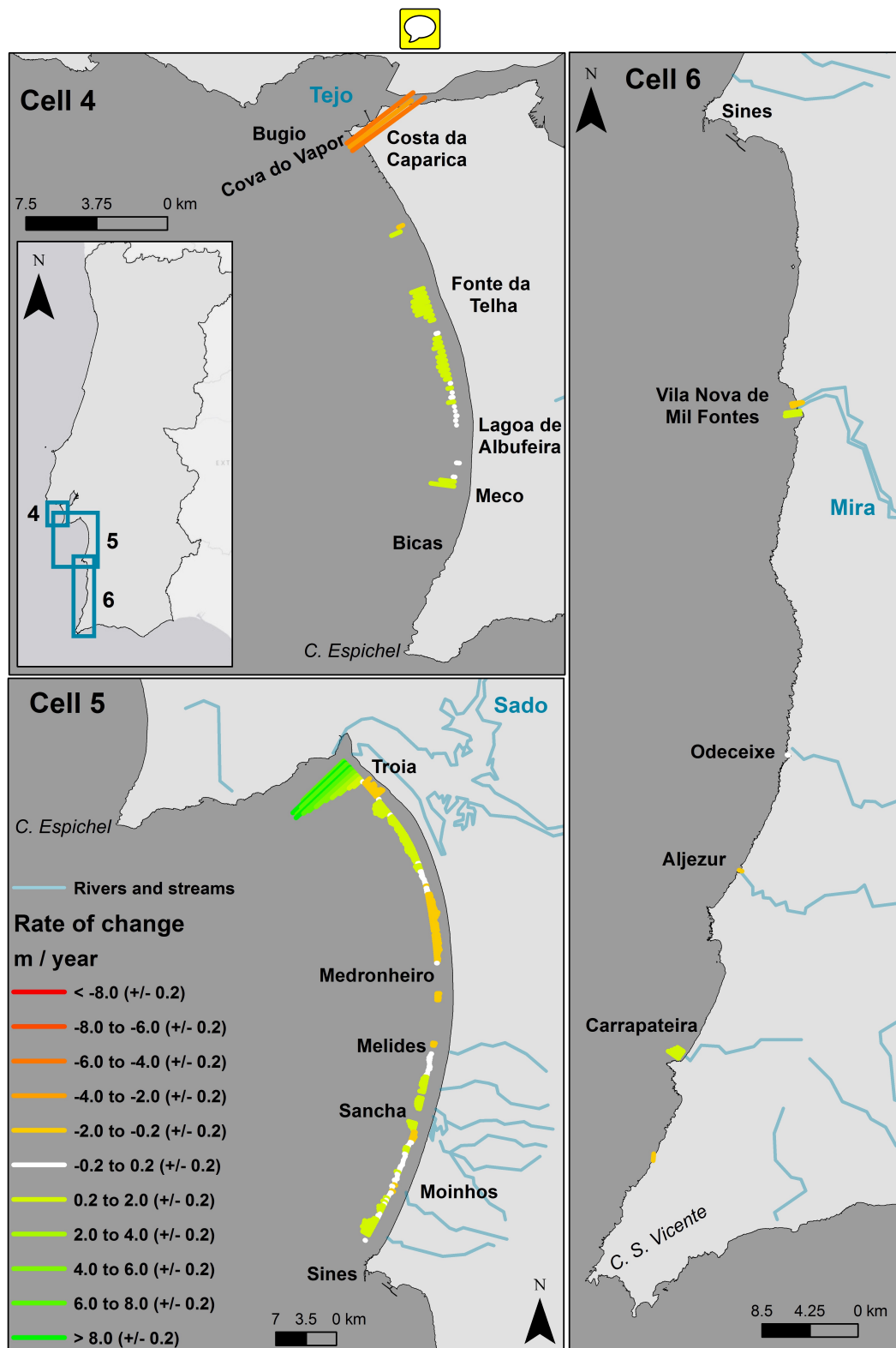


Figure 5. Long-term coastline rates of change in meters per year for sediment cells 4, 5 and 6.

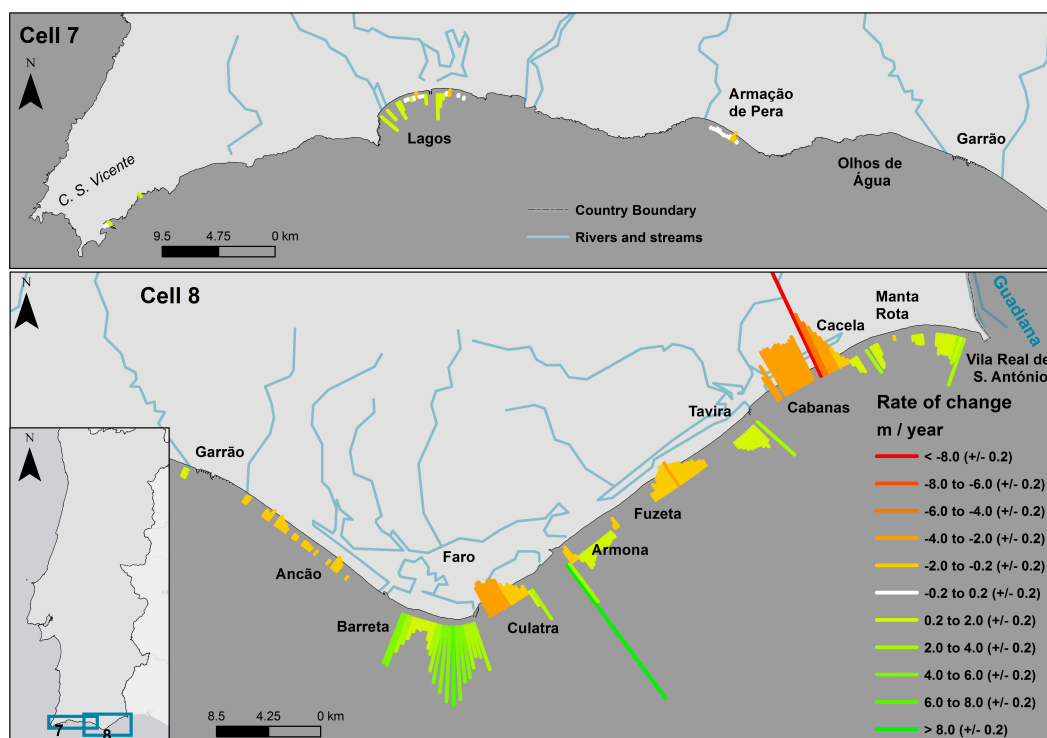


Figure 6. Long-term coastline rates of change in meters per year for sediment cells 7 and 8.

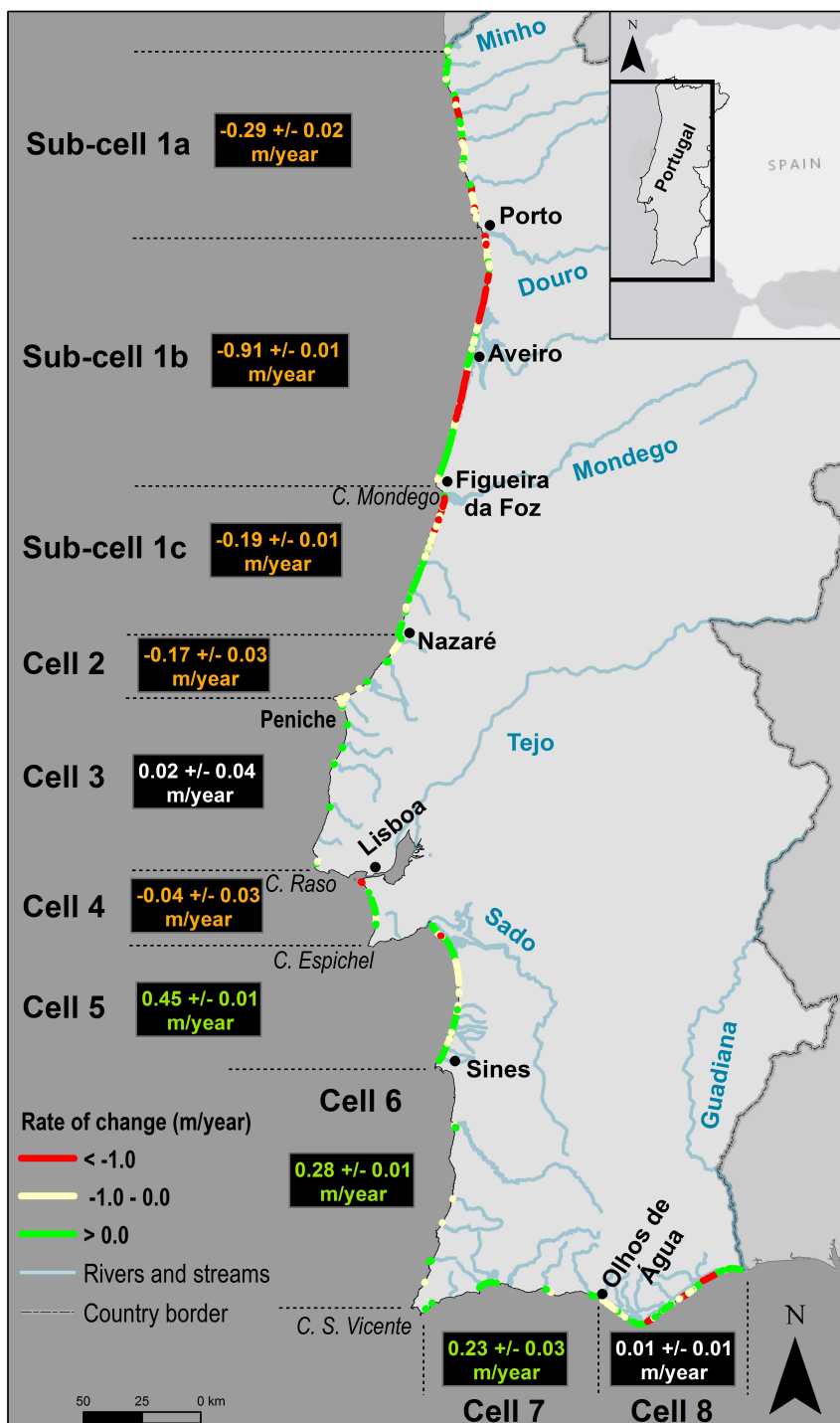


Figure 7. Rate of change map for the mainland Portuguese sandy beach-dune systems coastline. Represented in red are sandy coastal stretches with $R \leq -1$ m/year; in green are sections in accretion and in light yellow sections with $-1 < R < 0$ m/year. Boxed values refer to the mean coastline rate of change within each sediment cell (orange - erosion; green - accretion and white - within uncertainty measures).

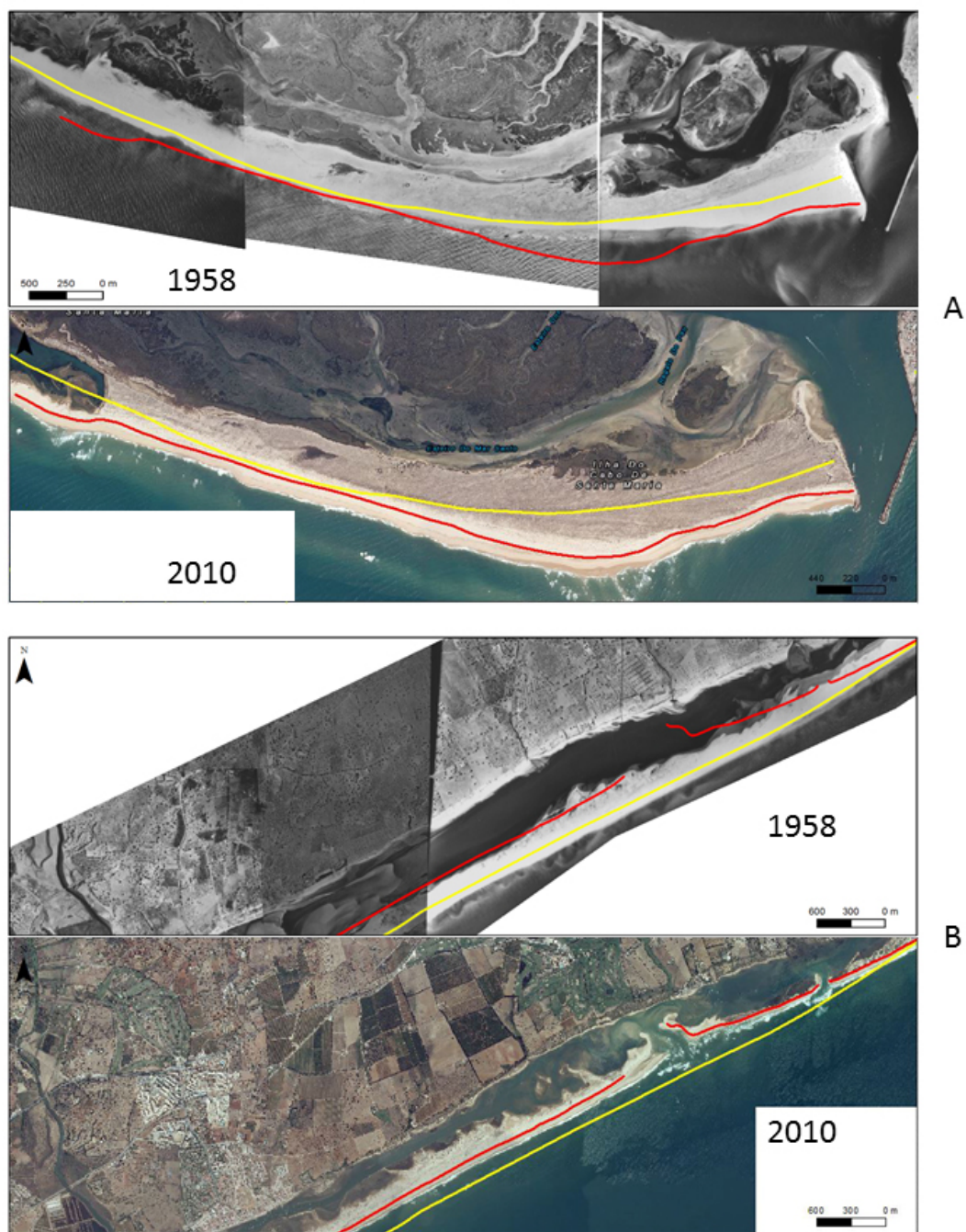


Figure 8. Detail of coastline change between 1958 (yellow) and 2010 (red) at A - Faro-Olhão inlet and B - Cacela inlet, both at the Ria Formosa barrier islands system.