



## Biogeochemical data from terrestrial and aquatic ecosystems in a periglacial catchment, West Greenland

Tobias Lindborg<sup>1,2</sup>, Johan Rydberg<sup>3</sup>, Mats Tröjbom<sup>4</sup>, Sten Berglund<sup>5</sup>, Emma Johansson<sup>1,6</sup>,

5 Anders Löfgren<sup>7</sup>, Peter Saetre<sup>1</sup>, Sara Nordén<sup>1</sup>, Gustav Sohlenius<sup>8</sup>, Eva Andersson<sup>1</sup>, Johannes  
Petroni<sup>1</sup>, Micke Borgiel<sup>9</sup>, Ulrik Kautsky<sup>1</sup>, Hjalmar Laudon<sup>2</sup>

<sup>1</sup>Swedish Nuclear Fuel and Waste Management Co. (SKB), Box 250, SE-101 24 Stockholm, Sweden

<sup>2</sup>Department of Forest Ecology and Management, Swedish University of Agricultural Sciences, SE-901 83  
Umeå, Sweden

10 <sup>3</sup>Department of Ecology and Environmental Science, Umeå University, SE-901 87 Umeå, Sweden

<sup>4</sup>Mats Tröjbom Konsult AB, Slänningevägen 28, SE-761 72 Norrtälje, Sweden

<sup>5</sup>HydroResearch AB, Stora Marknadsvägen 15, SE-183 34 Täby, Sweden

<sup>6</sup>Department of Physical Geography, Bert Bolin Centre for Climate Research, Stockholm University, SE-106 91  
Stockholm, Sweden

15 <sup>7</sup>EcoAnalytica, Slalomvägen 28, SE-129 49 Hägersten, Sweden

<sup>8</sup>Geological Survey of Sweden (SGU), Box 670, SE-751 28 Uppsala, Sweden

<sup>9</sup>Sveriges Vattnekologer AB, Marsjö Hvilan, SE-643 94 Vingåker, Sweden

*Correspondence to:* Tobias Lindborg (tobias.lindborg@skb.se)

20 **Abstract.** Global warming is expected to be most pronounced in the Arctic where permafrost thaw and  
release of old carbon may provide an important feedback mechanism to the climate system. To better  
understand and predict climate effects and feedbacks on the cycling of elements within and between  
ecosystems in northern latitude landscapes, a thorough understanding of the processes related to transport  
and cycling of elements is required. A fundamental requirement to reach a better process understanding is  
25 to have access to high quality empirical data on chemical concentrations and biotic properties for a wide  
range of ecosystem domains and functional units (abiotic and biotic pools). The aim of this study is therefore  
to make one of the most extensive field data sets from a periglacial catchment readily available that can be  
used both to describe present day periglacial processes and to improve predictions of the future. Here we  
present the sampling and analytical methods, field and laboratory equipment and the resulting  
30 biogeochemical data from a state-of-the-art whole-ecosystem investigation of the terrestrial and aquatic  
parts of a lake catchment in the Kangerlussuaq region, West Greenland. This dataset allows for the  
calculation of whole-ecosystem mass balance budgets for long list of elements, including carbon, nutrients



**as well as major and trace metals. The dataset is freely available and can be downloaded from PANGAEA:  
<https://doi.org/10.1594/PANGAEA.860961>**

## 1 Introduction

5 Arctic environments, including permafrost dominated periglacial landscapes, play a fundamental role in the ongoing global climate change (Smol, 2012; Schuur et al., 2015). Currently immobile pools of organic matter in currently frozen soils are expected to be mobilised due to permafrost thaw potentially resulting in dramatic changes in the rate of release of carbon, nutrients and metals (McGuire et al., 2009; Schuur et al., 2015). Therefore, a thorough understanding of the processes related to the transport and cycling of elements within and between  
10 terrestrial and aquatic ecosystems is key to describing and quantifying the effects of climate change. This understanding is also vital for our ability to facilitate reliable forecasts regarding future changes in biogeochemical cycling.

In order to describe the ongoing effects of climate related impacts on Arctic landscapes and to predict the future, it is essential to have access to data regarding chemical concentrations and biotic properties for a wide range of  
15 ecosystem domains and functional units (abiotic and biotic pools). There are several studies investigating different aspects of Arctic ecosystems, both in western Greenland (e.g., Anderson et al., 2008; Ryves et al., 2009; Sobek et al., 2014; Jessen et al., 2014; Whiteford et al., 2016), and elsewhere (e.g., Chapin et al., 1995; Rysgaard and Glud (eds.), 2007; Smol and Douglas, 2007; Tarnocai et al., 2009; Rydberg et al. 2010; Palmtag et al., 2015; Hindshaw et al., 2016; Lundin et al., 2016). These studies provided crucial insights of high latitude ecosystems that have  
20 increased our understanding of the significance and sensitivity of periglacial landscapes. However, no or very few studies have taken a whole-ecosystem approach and looked simultaneously at both the terrestrial and the aquatic ecosystems of the arctic landscape. Hence, there is a need for studies that take such a holistic approach, in order to better understand how biogeochemical processes are connected (Solomon et al., 2015).

In this work, we present biogeochemical data from a detailed whole-ecosystem investigation of the terrestrial and  
25 aquatic parts of a lake catchment in the Kangerlussuaq region, West Greenland. The lake is situated close to the Greenland ice sheet, and is hereinafter referred to as “Two Boat Lake”, or, for brevity, TBL; the lake is also known as SS903 (e.g., Saros et al., 2014; Sobek et al., 2014; Whiteford et al., 2016), or as Lake 26/L26 and “Talík Lake” (e.g., Anderson et al., 2001; Harper et al., 2011). The field investigation reported in this work was performed within the Greenland Analogue Surface Project (GRASP), and was conducted between 2010 and 2015. The over-arching  
30 objective of the GRASP-project was to describe the hydrology and ecosystem functions under periglacial conditions on a landscape scale. Further, GRASP aims at constraining the impact of climate change on such systems over long time scales, including one to several glacial cycles.

The specific aim of the field data collection and methodology presented here was to provide biogeochemical data that – together with hydrological data and carbon age determinations – will facilitate the development of mass  
35 balance models describing the transport and accumulation of various elements within, across and between different ecosystem units. The specific objectives of the present work are to describe the study design, the sample collection and analytical methods, and to make the biogeochemical data from the TBL catchment collected within the GRASP-project available to the scientific community.



This paper is structured as follows. First, we provide a short site description that outlines the main site specific conditions and defines the site in a regional context. This is followed by a section containing a presentation of the general study design and the conceptualisation of the investigated landscape system, followed by a detailed description of all installations, sample collection and *in situ* measurements for each of the studied ecosystem units.

5 The next section describes all analytical methods used in the chemical analyses, as well as the methods used for data processing. Finally, the results section briefly describes and exemplifies the data made available in the PANGAEA database, <https://doi.org/10.1594/PANGAEA.860961>

## 2 Site description

10 The TBL catchment, described in more detail by Johansson et al. (2015a, b), is situated in close proximity to the Greenland ice sheet and approximately 30 km from the settlement of Kangerlussuaq, West Greenland (Lat 67.125940 Long -50.180370; Figure 1). The catchment area is 1.56 km<sup>2</sup>, of which the lake occupies 0.37 km<sup>2</sup>. Although close to the ice margin, it is not part of the meltwater-driven surface water system (Figure 2), and surface water runoff to the lake is generated by precipitation only. A digital elevation model (DEM) describing both the  
15 topography of the terrestrial part of the catchment and the bathymetry of the lake has been developed by Petrone et al. (2016; PANGAEA, <http://doi.pangaea.de/10.1594/PANGAEA.845258>).

The Kangerlussuaq region is characterised by a hilly tundra landscape with numerous lakes, and is the most extensive ice-free part of Greenland. Continuous permafrost, except where interrupted by through taliks under larger lakes, covers the area. An active layer of 0.15–5 m, depending on soil type and vegetation cover, overlies  
20 the permafrost in the area from the settlement of Kangerlussuaq up to the ice sheet margin (van Tatenhove and Olesen, 1994). Measurements in the TBL catchment indicate an active layer depth around 0.4–2.0 (Petrone et al., 2016). Permafrost depths in the range 300–400 m have been observed from temperature measurements in deep bedrock boreholes 5–6 km from TBL (Harper et al., 2011).

The regional climate is dominated by relatively stable high-pressure cells over the ice sheet and can be characterised as continental (Engels and Helmens, 2010). The mean annual air temperature (MAAT) in  
25 Kangerlussuaq is -5.1°C (measured 1977–2015; Cappelen, 2016). The MAAT observed for the available data period 2011–2015 in the TBL catchment is -4.4°C, with the MAAT in Kangerlussuaq for the corresponding period being -5.3°C indicating somewhat warmer temperatures in the TBL area. The regional climate is dry with a mean annual precipitation (corrected for wind and adhesion losses) of 173 mm in Kangerlussuaq, with 67 mm falling as  
30 snow and 106 mm as rain (Johansson et al., 2015a).

The hydrology of the TBL catchment has been extensively studied during the period 2010–2015. The meteorological and hydrological data collected by GRASP at TBL are presented in Johansson et al. (2015a; <http://doi.pangaea.de/10.1594/PANGAEA.836178>). Johansson et al. (2015b) developed a detailed water balance model of the TBL catchment. From a decadal perspective precipitation barely exceeds evapotranspiration, and the  
35 net annual water budget is alternating between positive and negative. According to these modelling results, the lake has had a surface water outflow in one out of three years during the last 30 years. Thus, TBL has no continuous surface outflow, and it may take several years between outflow events. Surface outflow from the lake was last observed during the summer of 2009 (Johansson et al., 2015b). There are no permanent streams in the catchment,



which means that ice wedges provide the major transport routes of water from the catchment to the lake. The snow melt period (May-June) accounts for almost half of the inflow of water to the lake.

Maximum and average water depths in the lake are 29.9 m and 11.3 m, respectively, and lake volume is 4.29 Mm<sup>3</sup>. Secchi depth is about 15 m, indicating a photic depth of around 30 m. A thick mat of *Chara* sp. and Bryophytes dominates the lake bottom down to 14 m depth. From a lake water chemistry and morphometry perspective, TBL is typical for precipitation-driven lakes close to the ice margin in the Kangerlussuaq area (Ryves et al., 2002; Clarhäll, 2011; Andersson et al., 2009; Sobek et al., 2014).

A model describing the spatial distribution of soil depth and active layer thickness was developed by Petrone et al. (2016). Soils in the TBL catchment are dominated by till and glaciofluvial deposits, which to a large extent are overlain by a 0.3-0.4 m thick layer of eolian silt to fine sand (Rydberg et al., 2016; Petrone et al., 2016). With the exception of areas with exposed bedrock or till, most of the catchment has a sparse but continuous vegetation cover. Meadow, dry grass and dwarf-shrub communities dominate the vegetation. There are no trees, and shrubs rarely exceed heights of 0.5 m. The vegetation has been classified based on field surveys and aerial photos, and a vegetation map is available (Clarhäll, 2011).

### 3 Installations, sampling and in situ measurements

The overall study design and data collection protocol for TBL was based on a conceptual model describing the different functional units of the ecosystem (Figure 3). By collecting biogeochemical data for all identified ecosystem units in the conceptual model and then combining them with the existing hydrological model (Johansson et al., 2015b) and geometrical information (Petrone et al., 2016), the purpose was to make it possible to develop numerical models describing the fluxes and accumulation of various elements on a catchment scale.

No specific target element was chosen for this work, but rather the aim has been to provide understanding of the general fluxes of dissolved and particulate matter in the system. Therefore, we analysed concentrations of carbon, nitrogen and phosphorous – together with their associated species and isotopic composition – as well as total concentrations of a long list of major and trace elements, which together with the hydrological model can help us to understand the fluxes in the landscape. Through the age determinations of different soil and sediment layers, together with estimates of biomass and primary production in both the terrestrial and aquatic systems, we also wanted to make it possible to capture the accumulation of various elements in different landscape units.

#### 3.1 Water in terrestrial areas

##### 3.1.1 Lysimeters

In August 2011, soil lysimeters were installed in three transects, each with two or five locations (Figure 4A). At each location two to five lysimeters – installed at approximately every 10 cm starting from 10 cm below the soil surface – form a depth profile down to the permafrost at about 35 to 70 cm soil depth (Figure 5A and B). Lysimeters were installed at the same sites as the time-domain reflectometer (TDR) instruments that were used to measure soil water content in the hydrological studies performed by Johansson et al. (2015a, b). Two of the transects are



located in the wetter areas with peaty silt (transect 2 and 3), while the third transect (transect 1) is located in a drier area with eolian silt and fine sand (Figure 4C; see also Rydberg et al., 2016). The lysimeters (10 cm long, 2 cm in diameter, with an attached hose) were made of porous PTFE mixed with silica flour (pore size of 1  $\mu\text{m}$ ) similar to Petrone et al., (2007) Installation was done by digging a pit and inserting the lysimeters into the unaffected upslope wall of the pit to ensure a minimum impact on soil and hydrological conditions. The pit was then refilled in stratigraphic order.

In August or September each year from 2011 to 2014, water samples were collected from the lysimeters by attaching glass flasks (Figure 5A) with vacuum to the plastic tube leading to the lysimeter. The flasks were then left for 12 hours to extract water through suction from the lysimeters. No additional filtering was made, except for the filtering effect of the lysimeter itself. Samples were kept frozen awaiting analysis.

### 3.1.2 Soil water wells and surface water

In August or September from 2011 to 2014, soil water was collected from 15 soil water wells, which are described in detail in Johansson et al. (2015a; see also Figure 4A). Water was sampled through a plastic tube attached to a pump, and was collected in plastic flasks. In addition, water was sampled in small temporary ponds and ice wedges by hand filling plastic flasks (Figure 4A). Both unfiltered and filtered (0.45  $\mu\text{m}$ ) samples were collected. Samples were kept frozen awaiting analysis.

## 3.2 Lake water

### 3.2.1 Water and ice sampling

In April 2011-2014, June 2013-2014 and August/September from 2011 to 2014, lake water samples were collected using a Ruttner sampler (Figure 4A, Figure 6). Both filtered (0.45  $\mu\text{m}$ ) and unfiltered samples were collected in plastic flasks. In April 2011, 13 locations distributed across the lake were sampled at two depths (5 m below the surface and 5 m above the sediment surface) in order to make a first evaluation of the spatial variations in the lake water chemistry (Figure 4A). This evaluation showed very small differences between sites, but considerable differences between the two sampled depths. In light of this, subsequent lake water sampling was conducted at 5 and 25 m water depth at the centre of TBL (Figure 4A). In August 2011 and August 2014, additional lake water samples were collected at temporary lake inlets and at the lake outlet (Figure 4A). In winter (April) an ice auger was used to penetrate the ice (1.5-1.7 m thick, sampling points shown in Figure 4B). During drilling lake ice was collected in plastic bags, thawed and transferred to plastic flasks. Samples were kept frozen awaiting analysis.

### 3.2.2 In situ measurements

In April, June and September from 2012 to 2014, a TROLL 9500 multi-parameter probe was used for *in-situ* measurements of pH, temperature, dissolved oxygen and alkalinity profiles in the water column at the lake centre



(Figure 4A). The probe was lowered in steps with an average speed of about one meter per minute, and a field computer (Panasonic Toughbook) was used for online monitoring to ensure that the probe had stabilised before lowering it further. The multi-parameter probe was maintained and calibrated regularly following the instruction in the TROLL 9500 operator's manual.

5 During the period from 15 June 2013 to 23 August 2014 (except for the period from 22 Mars 2014 to 26 June 2014), continuous measurements of oxygen saturation and temperature were conducted at two depths close to the lake outlet using HOBO U26-001 loggers. During the first part of the measurement period the loggers were placed at 5 and 17 m water depth, but when they were redeployed after maintenance on the 23 August 2013 the loggers were placed at 8 and 20 m water depth.

10 Additionally, water temperature was measured at approximately 4.3 m water depth by two Leveltroll 700 transducers (accuracy of  $\pm 0.1\%$ ) that were placed directly on the sediment surface. These loggers were also used to monitor changes in lake water level by Johansson et al. (2015a). Small variations in measurement depth were due to slight changes in the positions of the transducers following annual data retrieval and maintenance. Temperature was logged every third hour from August 2011 to August 2015.

15

### 3.3 Precipitation and deposition

In June and August 2013 and 2014, i.e., during all precipitation events that coincided with our sampling campaigns, precipitation samples were collected using 9 white plastic pans ( $34 \times 22 \times 4.5$  cm). The pans were placed on the ground close to the lake outlet (Figure 4B) during precipitation events, and the water from each pan was mixed and transferred unfiltered to plastic flasks after 1 hour of collection. Samples were kept frozen awaiting analysis.

20

In April 2011, snow samples were collected every 10<sup>th</sup> meter along three transects using a standardised snow tube sampler (4.5 cm inner diameter; Figure 4B). The collected samples were pooled, thawed and a sub-sample from each transect was transferred unfiltered to a plastic flask. Samples were kept frozen awaiting analysis.

25

In April 2012 and 2013, old snow packs in sheltered locations were sampled to get an estimate of the eolian deposition (Figure 4B). In these snow packs the accumulated eolian material is clearly visible as dark layers (Figure 7A and B). Samples were collected using a standardised snow tube (inner diameter 4.5 cm), and the samples were thawed and transferred unfiltered to plastic flasks. Samples were kept frozen awaiting analysis.

### 3.4 Soils in terrestrial areas

30

During installation of lysimeters in August 2011, soil samples with known volumes were collected using steel cylinders. Samples were collected at 10 cm depth intervals from 10 cm below the soil surface to the permafrost. In 2011 soil samples were also collected from different soil units using a steel spade (Figure 4C, Soil chemistry). These soil samples were oven dried, and sieved into 0-35, 35-63, 63-125, 125-250 and >250  $\mu\text{m}$  fractions.

35

During the 2014 campaign, the top soils in areas of each vegetation type were sampled using a soil corer with a diameter of 10 cm (Figure 7C). Wetland and birch types were sampled as duplicates (approximately 1 m apart). At each location living plants and litter were removed before sample collection, and the top 12 cm of the core was divided into four 3-cm sections and stored in plastic bags. Each sample was dried to constant weight at 35°C,



homogenized and passed through a 2 mm sieve to remove roots >2 mm; this below-ground biomass was collected and weighed. In 2015, additional soil profiles were collected from two locations (triplicates) in 10-cm sections down to 40 or 50 cm soil depth. These samples were analysed as bulk samples without removal of roots.

- 5 In August 2014, soil samples extending down into the permafrost were collected at two locations with peaty silt – one at the southern end and one in the northern end of the lake using a soil coring device in steel that was driven down into the soil using a sledge hammer. At the southern end the profile extended down to 110 cm (not reaching the underlying till), and at the northern location it extended down to 60 cm and into the underlying till.

### 10 3.5 Lake sediments

In August 2011, surface sediment cores were collected from the centre of the lake and near the shore in the southern part of the lake using a HTH gravity corer (Renberg and Hansson, 2008). The 25-cm long core from the lake centre was sectioned into 1-cm sections down to 15 cm and then into 5-cm sections, while the 29-cm long core from the other location was sectioned into 5-cm sections throughout the entire length. All samples were placed in plastic  
15 bags and stored and transported cold. Upon arriving at the analysis laboratory the samples from the lake centre core were dried and weighted to determine the bulk density.

In August 2012, 13 additional surface sediment cores (23-40 cm long) were collected in four transects using a KC Kajak corer (Figures 4C, 7D). Sampling locations were selected to provide a good representation of the lakes sediments, in terms of differences in bottom type (vegetated and non-vegetated areas), location in the lake, and  
20 water depth. All cores were sub-sectioned in the field as follows: 0-10 cm in 1-cm sections, 10-20 cm in 2-cm sections and below 20 cm in 4-cm sections. The samples were placed in plastic containers, and stored and transported cold. Upon arrival at the laboratory the samples were frozen and freeze dried.

### 3.6 Biota

#### 25 3.6.1 Terrestrial biota

In August 2011 – during peak biomass season – the areal extents of the five main vegetation types in the TBL catchment (*Betula*, *Salix*, dry grassland, meadow and wetland) were determined (Table 1). The observed pattern coincided well with an orthophoto taken at the same time of the year. For each of the vegetation types (except *Salix*, due to a low total coverage) a main plot (0.5 x 0.5 m) and replicate plots (0.2 x 0.2 m; not for dry grassland)  
30 were selected (Figure 4D, terrestrial primary production). All living above-ground biomass and litter in each plot were sampled through destructive sampling. In the main plots, the living biomass was separated into functional groups (herbs/grasses, shrubs (wood and green tissue), lichens, bryophytes), whereas no separation was done in the replicate plots. Litter was separated into standing or attached to living biomass and litter found on the ground. In late June 2014, additional biomass samples were collected from the four dominating vegetation types (*Betula*,  
35 dry grassland, meadow and wetland), in order to assess respiration by comparing the carbon pools in living biomass, litter and soil organic matter (see section 3.4 regarding the soil sampling). For each vegetation type, three



170-cm<sup>2</sup> circular areas within a 1 m by 1 m plot were sampled destructively for both living biomass and litter; for the *Betula* and wetland vegetation types, one additional replicate plot each was sampled. Similarly to the 2011 sampling, the living biomass was divided into functional groups (herbs/grasses, shrubs (wood and green tissue), lichens, bryophytes); however, in the 2014 sampling campaign litter was retained as a single functional group.

5

In August 2011 and 2014, a smaller number of terrestrial biota samples were collected for chemical analysis. Litter, wood and living parts of *Betula*, and dead parts of bryophytes were collected from different locations (Figure 4D). Pooled samples of the dominating field layer species were collected at one location close to the northern lysimeter transect and one close to the weather station (Figure 4D). Sampling was conducted using a pair of scissors. The northern site was dominated by *Calamagrostis* and other genus within *Poaceae*, *Carex capillaris*, with smaller contribution of *Salix arctica/glauca*, *Vaccinium myrtillus* and *Carex norveica*. The southern site was dominated by two species of *Calamagrostis* and a *Poa sp.*, with a small contribution of *Carex scirpoides*. Muscle tissue from muskox (*Ovibos moschatus*) was also provided by a local hunter.

10

15

### 3.6.2 Aquatic biota

Water was collected with a Ruttner sampler at the lake centre for quantitative samples for phytoplankton, bacterioplankton and zooplankton (Figure 4D). In August 2011, August 2012 and April 2012, phytoplankton and bacterioplankton samples were collected from the epilimnion (at the surface and at 5 m water depth) and from the hypolimnion (20 m water depth). In August 2011, August 2012 and June 2013, zooplankton samples were collected from 5 m water depth with a Ruttner sampler (6 litres of water were filtered through a net with 65- $\mu$ m mesh size). Samples for phytoplankton and zooplankton were preserved with an acidic Lugols solution according to Olrik et al. (1998), and bacterioplankton samples were preserved with formaldehyde.

20

In August 2011 and August 2012, benthic bacteria were sampled with a HTH-corer (diameter 8.3 cm; Renberg and Hansson, 2008) from 6 locations, of which 3 deep and 3 shallow (Figure 4C). The 0-1 cm sections of the cores were mixed, and a 1-ml sub-sample was preserved with formaldehyde. In August 2011, the areal coverage of aquatic macrophytes was mapped from a boat along 6 transects and by walking along the shore, and the total biomass of aquatic benthic macrophytes was estimated at 21 locations. The estimates were done by collecting, drying and weighing all macrophytes from 0.12-m<sup>2</sup> plots (Figure 4D). In June 2013, five additional 0.12-m<sup>2</sup> plots were sample in the same way from the macrophytes dive transect (see section 3.6.4). In addition, biomass was quantitatively measured in nine production/respiration chambers (see section 3.6.3).

25

In August 2012 and June 2013, benthic fauna was sampled both qualitatively and quantitatively. For the qualitative sampling, 13 samples were taken in August 2012 and 5 in June 2013 with an Ekman grabber (16  $\times$  16 cm) and sieved through 0.5 mm. In addition to the species found in the quantitative sampling, qualitative sampling was also conducted in shallow areas using a sieve and by turning stones.

30

In August or September 2011, 2012 and 2014, samples of aquatic biota for chemical analysis were collected. Living tissue of vascular plants and macroalgae (*Chara sp.*, *Cladophora sp.*) were collected along the lake shore. *Nostoc sp.* and benthic fauna (Chironomidae, Oligochaeta, Ostracoda) were sampled using an Ekman grabber. *Lymnea sp.*, Dytiscidae, Odonata, *Branchinecta paludosa* and *Lepidurus arcticus* were sampled from the lake shore.





All biota samples were frozen before transport to the laboratory.

### 3.6.3 Aquatic production/respiration measurements

5 In June and August 2013, benthic production/respiration experiments were performed in plexiglas chambers with a diameter of 0.29 m and a volume of 0.017 m<sup>3</sup> (volume above sediment) placed at the lake bottom (3 chambers each at 0.7 m, 6 m and 12 m water depth in June and 5 chambers at 0.7 m depth in August (Figure 4D and 5C and D). Oxygen and temperature were measured at the start of the incubation, after 2 hours and at a few occasions during the following day. Primary production and respiration were calculated based on the oxygen concentration difference before and after the incubation. After the incubation, all vegetation in the chamber was sampled, dried and weighted to allow for biomass quantification (cf. section 3.6.2).

10 In August 2012 and June 2013, pelagic production/respiration was estimated by incubating 100 mL glass bottles (2 transparent and 1 dark bottle for each depth; Figure 4D). Production of macroalgae (*Chara sp.* and *Cladophora sp.*) was also measured in 100 ml glass bottles in August 2012. For pelagic production/respiration measurements, glass bottles with unfiltered lake water were incubated at 0.1, 0.25, 0.5, 1, 2, 3, 5, 10, 15, and 20-m water depth. For *Chara sp.* and *Cladophora sp.*, pieces of algae were placed in 100 mL glass bottles filled with filtered (0.45 μm) water from the same depths as the incubation, *Chara sp.* was incubated at 1, 2, 5, and 10-m water depth and *Cladophora sp.* at 5-m water depth. Phytoplankton, *Chara sp.* and *Cladophora sp.* were incubated for 4 hours around midday. The oxygen concentration and temperature in the bottles were measured before and after the incubation using a HANNA HI 9146 oxygen sensor.

20

### 3.6.4 Macrophytes inventory transect

In June 2013 observation of spatial coverage and collection of benthic primary production biomass were conducted at the lake. (Figure 4D). A dive survey was performed along a transect perpendicular to the depth gradient following the standard of the national environmental monitoring in Sweden (Figure 8), see Moy et al. (2010) for a detailed description and a comparison with other methodologies. In brief: the divers started from the deeper end of the transect, and followed a measuring tape towards the shoreline. Along their way, the divers noted the distance and depth together with bottom type, species composition (macrophytes) and their respective surface coverage on a seven-point scale, i.e. 1, 5, 10, 25, 50, 75 and 100% coverage. Distance, depth and species coverage were noted every time a change occurred in the bottom substrate, species composition or surface coverage. Estimation of coverage was done for a 6-10 m wide corridor (i.e. 3-5 m on each side of the tape). This resulted in a detailed description of the bottom structure, the coverage of various species and how they changed with depth and distance from the shoreline.

30



## 4 Chemical analyses and other data processing

### 4.1 Major and trace elements in water

The elemental concentrations of major and trace elements (Al, Ca, Fe, K, Mg, Mn, Na, P, Si, Ti, Ag, As, B, Ba, Be, Cd, Co, Cr, Cs, Cu, Ga, Ge, Hf, Hg, Li, Mo, Nb, Ni, Pb, Rb, S, Sb, Sc, Se, Sn, Sr, Ta, Th, Tl, U, V, W, Y, Zn, Zr, Ce, La, Pr, Nd, Sm, Eu, Gd, Tb, Dy, Ho, Er, Tm, Yb and Lu) in liquid samples were determined using inductively coupled plasma-sector field mass spectroscopy (ICP-SFMS) (Table 2). All elements were analysed quantitatively on pre-filtered samples. Halogenes (Cl, Br, I) were analysed separately under alkaline conditions. Replicate analysis (n=8) shows that most elements were within either 10% or 0.01  $\mu\text{g L}^{-1}$  (calculated as one standard deviation). Elements with larger deviations were Cu (0.6  $\mu\text{g L}^{-1}$ ), Fe (0.3  $\mu\text{g L}^{-1}$ ), P (0.3  $\mu\text{g L}^{-1}$ ), Pb (0.03  $\mu\text{g L}^{-1}$ ), Ti (0.05  $\mu\text{g L}^{-1}$ ), W (0.07  $\mu\text{g L}^{-1}$ ) and Zn (0.7  $\mu\text{g L}^{-1}$ ).

Silica in water was analysed. In brief: Silica was allowed to react with a molybdate reagent, reduced by ascorbic acid to form molybdenum blue and quantified using Segmented Flow Analysis (SFA) following the procedure outlined in OI Analytical methodology part #319529. In a small number of samples, the concentrations of halogenes (Br, Cl, F) and sulphate ( $\text{SO}_4^{2-}$ ) were determined using liquid ion chromatography (DIN EN ISO 10304-1/-2) (Table 2).

Elemental concentrations of Al, Ca, Fe, K, Mg, Mn, Na, P, Si, Ti, Ag, As, B, Ba, Be, Cd, Co, Cr, Cs, Cu, Ga, Ge, Hf, Hg, Li, Mo, Nb, Ni, Pb, Rb, S, Sb, Sc, Se, Sn, Sr, Ta, Th, Tl, U, V, W, Y, Zn, Zr, Ce, La, Pr, Nd, Sm, Eu, Gd, Tb, Dy, Ho, Er, Tm, Yb, Lu in suspended solids trapped on acid washed filters (0.22  $\mu\text{m}$ ) were determined using ICP- (Table 2). The filters and suspended solids were digested in strong acid ( $\text{HNO}_3\text{:HF}$ ) in closed Teflon vessels (losses might occur for elements denoted in *italic*). Concentrations in suspended solids were corrected for dissolved substances by including the analysis of filters soaked in pre-filtered water, and are reported as  $\mu\text{g L}^{-1}$ .

### 4.2 Major and trace elements in solid samples

Major and trace elements in solid samples were analysed using either wave-length dispersive X-ray fluorescence spectroscopy (WD-XRF) on loose-powder samples following the method described by Rydberg (2014), or by ICP-SFMS following either digestion (total concentrations) or leaching (extractable concentrations) (Table 2). All samples analysed using WD-XRF were pulverised using a Retsch swing mill (2 minutes at 30 Hz) prior to analysis. Total concentrations were determined following either lithium borate ( $\text{LiBO}_2$ ) fusion (Al, Ba, Be, Ca, Ce, Cr, Dy, Er, Eu, Fe, Ga, Gd, Hf, Ho, K, La, Lu, Na, Nb, Nd, P, Pr, Rb, Sc, Si, Sm, Sr, Ta, Tb, Th, Ti, Tm, U, W, V, Y, Yb, Zr), strong acid ( $\text{HNO}_3\text{:HF}$ ) digestion (Ag, As, Au, B, Bi, Cd, Co, Cs, Cu, Hg, Ir, Li, Mo, Ni, Os, Pb, Pd, Pt, Re, Rh, Ru, S, Sb, Se, Sn, Te, Tl, Zn) or sintering at 550°C with ZnO and  $\text{NaCO}_3$  (Cl, Br, I). For the analysis of extractable metals, the samples were leached in ammonium acetate solution ( $\text{NH}_4\text{Ac-CH}_3\text{COO}$ ) buffered to pH 4.5 for 16 h. Methane was added to enhance the analytical performance for Ag and Pd, and halogenes (Cl, Br, I) were analysed separately in an alkaline environment. For samples analysed in 2011-2013, Al, As, Ba, Be, Br, Ca, Cd, Cl, Co, Cr, Cs, Cu, Fe, I, K, Li, Mg, Mn, Mo, Na, Nb, Ni, P, Pb, Pd, S, Se, Si, Sn, Sr, Ti, U, V and Zn were analysed quantitatively, while the remaining elements were analysed semi-quantitatively. In 2014, all elements were analysed quantitatively.



For the WD-XRF-analysis lower limits of detection (LLD) range from a few  $\mu\text{g g}^{-1}$  for trace elements to a few tens of  $\mu\text{g g}^{-1}$  for major elements. Accuracy was assessed using ten different certified reference materials ( $n=5$ ), and were within  $\pm 10\%$  (or a few  $\mu\text{g g}^{-1}$ ) for all elements except S, which had an accuracy of about 20% (Rydberg, 2014). Precision, based on replicate measurements of Two-Boat Lake samples ( $n=30$ ) was always better than 5% (or  $\pm 1 \mu\text{g g}^{-1}$  for elements present in low concentrations). Fluoride ( $\text{F}^-$ ) and sulphate ( $\text{SO}_4^{2-}$ ) in solid samples were analysed by liquid ion chromatography (Table 2), following the procedure outlined in DIN EN ISO 10304-1.

#### 4.3 Carbon and nutrients in water

Organic carbon (OC), inorganic carbon (IC), nitrogen (total N,  $\text{NH}_4\text{-N}$ ,  $\text{NO}_2+\text{NO}_3\text{-N}$ ) and phosphorous (total P;  $\text{PO}_4\text{-P}$ ) in water samples were analysed (Table 2). TOC and DOC were determined by thermal combustion ( $680^\circ\text{C}$ ) following acidification (to remove any IC), while IC was analysed by converting all IC to  $\text{CO}_2$  in a reactor vessel filled with 25%  $\text{H}_3\text{PO}_4$  (AnalyticJena Multi N/C-3100).

Nitrogen and phosphorous, and their different species, were determined using segmented flow analysis (SFA) following the procedures outlined in OI Analytical methodology part #319526 ( $\text{NH}_4\text{-N}$ ), #319527 (total N,  $\text{NO}_2+\text{NO}_3\text{-N}$ ) and #319528 (total P,  $\text{PO}_4\text{-P}$ ). The reported analytical uncertainty was less than 10%. Total C, TOC, DOC, TIC and DIC were analysed following the procedures outlined in DIN EN ISO 1484-H3. Total N analysis was made after oxidative digestion with peroxodisulphate (DIN EN ISO 11905-1:1997),  $\text{NO}_3\text{-N}$  was analysed through ion chromatography (DIN EN ISO 10304-1/-2-D19) and  $\text{NO}_2\text{-N}$  and  $\text{NH}_4\text{-N}$  were analysed through continuous flow analysis and spectrometric detection (DIN EN ISO 13395-D28 and DIN EN ISO 11732-E23, respectively).

In addition to the total and dissolved concentrations described above, Chlorophyll a (Chl-a) and phosphorous associated with the particulate fraction were analysed (Table 2). In brief: known volumes of water were filtered through  $0.45 \mu\text{m}$  cellulose acetate filters. For Chl-a analysis the Chl-a was extracted from the filters using ethanol (96%) and the Chl-a concentration in the solution was measured using a spectrophotometer (Helcom Combine manual (Helcom, 2016), Annex C-4) and phosphorous on the filters was determined using segmented flow analysis following combustion (OI Analytical methodology part #319528). The reported analytical uncertainty was 25% for the Chl-a measurements and less than 5% for C, N and P.

#### 4.4 Organic material and nutrients in solid samples

The organic contents of solid samples were estimated by either total carbon analysis or loss on ignition (LOI). A smaller number of soil samples were analysed using both approaches to allow for comparison between the two methods. Total carbon and nitrogen concentrations were determined either separately using an elemental analyser or simultaneously as the analysis of stable C and N isotopes (see further details below; Table 2).

By comparing the carbon contents in acid-treated samples with those in samples not treated with acid, Rydberg et al. (2016) concluded that inorganic carbon contents in the sediments of TBL are negligible, implying that total carbon in the sediment equals total organic carbon. LOI samples were first dried at  $105^\circ\text{C}$  to constant weight, then burnt in a muffle furnace at  $550^\circ\text{C}$  for 4 hours and reweighed.



Nitrate and phosphate in solid samples were determined following the procedure outlined in DIN EN ISO 10304-1/-2-D19/20 and DIN EN ISO 15681-2 (D46).

#### 4.5 Stable isotopes

5 Carbon, nitrogen and their stable isotopes in solid samples were determined simultaneously using an elemental analyser coupled with an isotope-ratio mass spectrometer (EA-IRMS) (Table 2). The data were corrected for instrumental drift and sample-size effects using internal standards, and  $\delta^{13}\text{C}$  and  $\delta^{15}\text{N}$  were calculated with reference to Vienna Pee Dee Belemnite (VPDB) and atmospheric air, respectively. Analytical performance was assessed using different internal standards that are regularly checked against certified reference materials. The  
10 standard deviation of all internal standards ( $n=42$  and  $n=10$  for SLU and ISO-Analytical, respectively) were always less than  $\pm 0.7\%$  for C,  $\pm 0.3\%$  for  $\delta^{13}\text{C}$ ,  $\pm 0.1\%$  for N and  $\pm 0.2\%$  for  $\delta^{15}\text{N}$  for SLU, and  $\pm 2.5\%$  for C,  $\pm 0.1\%$  for  $\delta^{13}\text{C}$ ,  $\pm 0.4\%$  for N and  $\pm 0.2\%$  for  $\delta^{15}\text{N}$  for ISO-Analytical Ltd.

Stable carbon isotopic composition in dissolved inorganic carbon (DIC) was determined by injecting 5 mL of water into 12 mL septum-sealed glass vials in the field (Table 2). The glass vials had been prefilled with 100  $\mu\text{L}$  of 85%  
15  $\text{H}_3\text{PO}_4$  and flushed with helium gas (100 mL/min) for 5 min, and the isotopic composition of the head space was determined using a Gasbench II coupled to a continuous flow-IRMS (Thermo scientific MAT 253). The isotopic composition,  $\delta^{13}\text{C}$ , was calculated with reference to VPDB, and the reproducibility of the analysis was reported to be better than 0.1‰.

Analyses of hydrogen and oxygen isotopes in water samples were conducted using a liquid water isotope analyser  
20 (Picarro L1102-i). The  $\delta^{18}\text{O}$  and  $\delta^2\text{H}$  values were calculated with reference to Vienna Standard Mean Ocean Water (VSMOW), and the reported analytical uncertainties for  $\delta^{18}\text{O}$  and  $\delta^2\text{H}$  were 0.065‰ and 0.0280‰, respectively. Sulfur-34 ( $^{34}\text{S}$ ) and sulfur-32 ( $^{32}\text{S}$ ) were determined. The samples were precipitated as  $\text{BaSO}_4$  and then analysed using an EA-IRMS system (a Carlo Erba NC2500 connected to a Thermo Delta plus). The isotopic composition,  $\delta^{34}\text{S}$ , was calculated with reference to Vienna Diablo Canyon Trolite (V-CDT), and the reproducibility of the  
25 analysis was calculated to be better than 0.2‰.

#### 4.6 Radioisotopes

The soil, permafrost and sediment samples were analysed for Carbon-14 ( $^{14}\text{C}$ ) (Table 2). The samples were converted to graphite using an automated graphitisation equipment (AGE), and then analysed for their  $^{14}\text{C}$  content  
30 using single stage accelerator mass spectrometry (AMS). The values reported in the data base are either uncalibrated  $^{14}\text{C}$  ages or the fraction of modern carbon ( $F^{14}\text{C}$ ) for postbomb dates. Calibrated ages were obtained using either the InterCal13.14C or the region-1 postbomb curve (Reimer et al., 2013; Hua et al., 2013) in the online version of Oxcal 4.2 (<https://c14.arch.ox.ac.uk>; Bronk Ramsey, 2009) and are shown in Figure 9.

Lead-210 ( $^{210}\text{Pb}$ ) was analysed either measuring the activity of its daughter isotope polonium-210 ( $^{210}\text{Po}$ ) by means  
35 of alpha spectrometry or as a direct measurement together with cesium-137 ( $^{137}\text{Cs}$ ), radium-226 ( $^{226}\text{Ra}$ ), thorium-232 ( $^{232}\text{Th}$ ), thallium-208 ( $^{208}\text{Tl}$ ), potassium-40 ( $^{40}\text{K}$ ) and americium-241 ( $^{241}\text{Am}$ ), using gamma (Table 2). Alpha spectrometry measurements were conducted using between 0.25 and 0.5 g of sample and a counting time of 60,000



seconds. The method detection limit was estimated to 0.1-0.2 DPM g<sup>-1</sup> (disintegrations/time), the counting errors were generally less than 10% (except for very low <sup>210</sup>Po activities), and replicate analysis (n=6) deviated less than 0.1 disintegrations per minute g<sup>-1</sup>. The gamma spectrometry was conducted using 5-23 g of sample and a counting time between 83,000 and 340,000 seconds. The reported uncertainty of the analysis varies between 6 and 30% depending on the specific radioisotope and the activity of the specific samples (lower activities generally have higher relative uncertainty).

The Uranium-234:235 (<sup>234</sup>U:<sup>235</sup>U) isotopic ratio measurements were conducted by allowing one litre of water to desiccate. The residue was then digested using 2% HNO<sub>3</sub> and the <sup>234</sup>U:<sup>235</sup>U ratio was determined using ICP-SFMS. The analytical performance was assessed using certified reference materials and the reported uncertainties (95% confidence interval) were below 5%, except for the Pingo spring sample that had an uncertainty of 30%.

#### 4.7 Biomass quantification

##### 4.7.1 Terrestrial

For the main plots in the 2011 biomass sampling and all plots in the 2014 biomass sampling, the living biomass of each functional group – herbs/grasses, shrubs, lichens, mosses and two litter types (2011 only) – was determined by subtracting the moisture content, determined by drying sub-samples at 80°C, from the total sample weight. The weight of attached mineral grains was also corrected for by analysing LOI (loss on ignition) in sub-samples. In the replicate plots from the 2011 biomass sampling, the same approach was employed to obtain the total biomass samples. The litter biomass in the 2011 replicate plots and all 2014 biomass sampling plots was estimated by using the ratio between living biomass and litter from the main plots in the 2011 biomass sampling.

##### 4.7.2 Aquatic

The species composition and biovolumes of phytoplankton and zooplankton were determined using an inverted phase-contrast microscope, and samples were allowed settle over-night. For phytoplankton, the carbon biomass was estimated by assuming a wet weight of 1 g cm<sup>-3</sup> and using the taxa specific carbon-content conversion factors presented by Olrik et al. (1998). For zooplankton, carbon biomass was estimated using length-to-weight conversion factors (Johansson et al., 1976; Ruttner-Kolisko, 1977), and assuming a dry weight-to-carbon conversion factor of 0.48.

Both planktonic and benthic bacteria samples were analysed. The benthic samples were first sonicated at 75 W for one minute. All samples were stained with acridine orange, filtered onto 0.2 µm polycarbonate filters and counted using an epifluorescence microscope. A total of at least 400 cells were counted for each sample, and total biovolumes were estimated by measuring at least 100 cells. Dry weight was calculated according to Loferer-Krössbacher et al. (1998) using Eq. 1:

$$\text{Dry weight} = 435 \cdot \text{Volume}^{0.86} \quad \text{Eq. 1}$$



and the carbon content was estimated assuming a dry-weight-to-carbon conversion factor of 0.5.

The total mass of aquatic macrophytes was converted to carbon biomass by assuming a dry-weight-to-carbon conversion factor of 0.4. Biomass for benthic fauna was calculated by assuming that the dry weight was 20% of the wet weight, and the carbon content was estimated by assuming a dry-weight-to-carbon conversion factor of 0.3 (Kautsky, 1995).

## 5 Results

### 5.1 Precipitation and deposition

Concentrations of TOC/DOC (TOC and DOC), total nitrogen and phosphorous in precipitation showed considerable variation depending on precipitation type (Figure 10). Newly fallen snow, and filtered samples, had very low TOC/DOC, nitrogen and phosphorous concentrations (1-3 mg L<sup>-1</sup>, 0.3-1 mg L<sup>-1</sup> and 33-83 µg L<sup>-1</sup>, respectively), whereas unfiltered, old snow – that also contained large amounts of eolian material – had much higher concentrations (40-60 mg L<sup>-1</sup>, 3-4 mg L<sup>-1</sup>, and 1400-2700 µg L<sup>-1</sup>, respectively). There was also a difference in the δ<sup>18</sup>O and δ<sup>2</sup>H between rain and snow, with rain having slightly higher values (Figure 11).

### 5.2 Soil water

Deep soil water (samples from lysimeters and soil water wells) and surface water (puddles and small inlets) showed relatively similar TOC/DOC, nitrogen and phosphorous concentrations (21-37 mg L<sup>-1</sup>, 0.9-1.5 mg L<sup>-1</sup> and 10-50 µg L<sup>-1</sup>, respectively; Figure 10). Because the TOC/DOC values for the unfiltered samples were virtually identical, it was concluded that all organic carbon was present in the dissolved phase (i.e., TOC equals DOC; Figure 10). Even if deeper soil water samples showed considerable variation in DIC concentrations, they were generally higher as compared to the DIC concentrations in surface waters (Figure 10). δ<sup>18</sup>O and δ<sup>2</sup>H values in soil water overlapped with the values for precipitation, while δ<sup>13</sup>C in DIC was considerably lower in deep soil water as compared to surface water (Figure 11).

### 5.3 Lake water

Lake water temperature at 4 m depth varied between 1 and 14°C, with maximum temperatures occurring in late July or early August (Figure 12). Similar to the water samples, there were very small differences in TOC/DOC between unfiltered and filtered samples, and there were also only minor differences in TOC/DOC, nitrogen and phosphorous between surface and bottom waters (Figure 10). TOC/DOC, nitrogen and phosphorous concentrations in lake water samples were lower than those in the soil water samples (8-10 mg L<sup>-1</sup>, 0.5-0.9 mg L<sup>-1</sup>, and 3-11 µg L<sup>-1</sup>, respectively; Figure 10), while DIC concentrations in lake water (14-21 mg L<sup>-1</sup>) were in the upper range of those measured in soil water samples (6-16 mg L<sup>-1</sup>; Figure 10). δ<sup>18</sup>O and δ<sup>2</sup>H plot in a very narrow range in the



uppermost range of the results for precipitation and soil water, while  $\delta^{13}\text{C}$  in lake water DIC was considerably higher than in all other catchment compartments (Figure 11).

Results from the in-situ measurements of dissolved oxygen and temperature show the highest oxygen concentrations in the end of the active period. During winter, a sharp decrease in dissolved oxygen is observed at 17-20 m depth, whereas the oxygen level at 5-8 m depth is relatively stable the whole winter period. During summer the oxygen concentrations decrease both on shallow and greater depths as the lake temperature rise.

#### 5.4 Soils

Analysis of  $^{14}\text{C}$  in the soil profile in the southern part of the catchment (Figure 4A) shows that the lower most sample is about 4000 years old. It is also apparent that the three samples from the upper 40 cm all have a modern  $^{14}\text{C}$ -signal, and that the three samples from the 50 to 80 cm depth interval all have an age of around 2300 years (Figure 8).

Using the 24 soil samples where both LOI and total carbon were analysed and that had carbon concentrations above 1%, the site specific carbon: LOI ratio was calculated ( $0.52 \pm 0.05$ ). The highest concentrations of organic matter in soils were found in the areas with peaty silt (LOI of 2-30%), while upland soils generally contained smaller amounts of organic matter (LOI of 0.2 to 11%). Soil organic matter showed a narrow range of  $\delta^{13}\text{C}$  around -26‰, i.e., slightly lower than the soil water (Figure 11).

#### 5.5 Lake sediments

Even if there are considerable differences in the down-core trends for the 13 surface sediment cores, a couple of general features do exist. All cores show a more or less pronounced increase in organic material (as indicated by the increasing carbon concentrations) in the topmost sediment sample. This is likely a result of degradation of organic matter in the most recent sediment layers (Gälman et al., 2008), but to some extent it could also be related to an increased autochthonous production due to the increasing temperatures and nitrogen deposition in recent decades (Anderson et al., 2008; Bergström et al., 2005). All cores also show a more long-term increase in organic material in the top 5 to 20 cm of the cores. This increase likely has different reasons depending on where in the lake the core is collected. In deeper locations (>14 m), it is likely a result of an increased autochthonous production, as mentioned above, and a decrease in the input of eolian material, as discussed in detail in Rydberg et al. (2016). For the shallower locations, with benthic vegetation, the increase is further accentuated by a much higher abundance of mosses and moss remains in the upper section of the sediment.

Depending on whether the cores were collected in areas with or without benthic vegetation, they can be grouped into two categories. First, cores from locations with benthic vegetation, i.e., cores taken at water depths of less than 14 m, showed carbon concentrations in the top 5 cm ranging from 6 to 16%, silicon and titanium concentrations from 20 to 26  $\mu\text{g g}^{-1}$  and 1700 to 2300  $\mu\text{g g}^{-1}$ , respectively, and phosphorous concentrations from 800 to 1300  $\mu\text{g g}^{-1}$ . The bulk density of the sediment ranges from 30 to 125  $\text{mg cm}^{-3}$ . Second, at deeper locations without benthic



vegetation, i.e., deeper than 14 m, the carbon concentration in the top 5 cm of the core ranges from 1 to 11%, silicon and titanium concentrations from 18 to 25% and 2000 to 2500  $\mu\text{g g}^{-1}$ , respectively, and phosphorous concentrations from 1100 to 2600  $\mu\text{g g}^{-1}$ . For the deeper locations, the bulk density was a little higher, 60 to 700  $\text{mg cm}^{-3}$ . The  $\delta^{13}\text{C}$  values of all sediments showed a much larger range than the soil samples (-31 to -23‰; Figure 11), and there was also considerable variation in  $\delta^{15}\text{N}$  values (-0.8 to 3.5‰).

In order to compare the sediment accumulation across the TBL basin, a number of the sediment profiles were analysed for Pb-210. A number of moss macrofossils were also dated through C-14 analysis. The sediment depth where the sediment is about 150 years – i.e., the sediment level where atmospherically supplied, unsupported, Pb-210 no longer can be detected – was between 5 and 12 cm in the six cores where Pb-210 was analysed (TBL-1, 5, 6, 8, 10, 13; Appleby, 2008). The calibrated ages of the  $^{14}\text{C}$ -dated macrofossils are all between 0 and 500 years, which is a period that is very difficult to date accurately due to the large variations in the atmospheric  $^{14}\text{C}$ -concentrations resulting from the increased burning of fossil fuels (Reimer et al., 2013). This results in very broad calibrated age ranges with many possible dates, which complicate the interpretation (Figure 9). In one of the sediment cores (TBL-4), it is likely that the modern  $^{14}\text{C}$ -signature of the sample indicates that the analysed macrofossil was pushed down through the sediment by the corer, and indicating that this result should not be used.

## 5.6 Terrestrial biota

Generally, lichens bryophytes and litter (i.e., material found on or close to the ground) had more attached mineral particles compared to standing litter and standing living biomass. Assuming that pure plant material gives an ash content of approximately 5%, standing living biomass had a mineral particle content of almost zero.

The most exposed habitat, ridges with dry grassland, had the lowest biomass, and it was found that biomass increased in the order meadow, wetland and *Betula* vegetation types. This pattern was consistent among both sampling campaigns (mid-August 2011 and late June 2014). Even if it could be expected that standing biomass would be higher later in the season, the opposite pattern was found for both the *Betula* and the wetland vegetation types. A closer examination suggests that, at least for the *Betula* vegetation type, this can be attributed to denser stands being sampled in 2011 than in 2014 (higher wood biomass). Bryophytes were also more dominant in the sampling plots used during the 2014 sampling campaign. For the dry ridges the observed higher biomass in June is consistent with expectations, i.e., that peak biomass should occur when the moisture content still is relatively high.

Both when comparing the main and the replicate plots from the 2011 sampling and when comparing the 2011 and 2014 sampling campaigns, there was a high variability in biomass for the different functional groups. This suggests that the smaller plots (0.2 x 0.2 m and 170  $\text{cm}^2$ ) used in this study might not be large enough to capture the spatial heterogeneity within each vegetation type. Hence, it is expected that the larger plots (0.5 x 0.5 m) should provide the most reliable estimates of terrestrial biomass. Furthermore, it is worth noting that the primary objective of the 170- $\text{cm}^2$  plots used in the 2014 sampling campaign was to relate respiration and production to biomass, litter and organic content in the soil, and not to estimate total biomass. Terrestrial primary producers had  $\delta^{13}\text{C}$  and  $\delta^{15}\text{N}$





values of  $-29 \pm 1\%$  and  $-0.4 \pm 3\%$ , respectively, while the single sample of from a terrestrial consumer had  $\delta^{13}\text{C}$  and  $\delta^{15}\text{N}$  of  $-24\%$  and  $4.3\%$  (Figure 11).

### 5.7 Aquatic biota

5 The dominating phytoplankton taxa in August 2011 and April 2012 were *Dinophyceae* followed by  
*Chytriphyceae*. In August 2012, *Chlorophyceae* was the dominant phytoplankton type, followed by  
*Cryptophyceae*. Phytoplankton biomass varied between 13 and 62 mg C m<sup>-3</sup>. Bacterioplankton biomass was  
considerably higher in the samples from August 2011 (on average 0.023 g C m<sup>-3</sup>) than in the samples from 2012  
10 (average values of 0.012 and 0.010 g C m<sup>-3</sup> for April and August, respectively). The zooplankton community was  
dominated by *Copepoda* and *Cladocera* (mainly *Daphnia*), and zooplankton biomass ranged between 0.01 to 0.07  
g C m<sup>-3</sup>.

Contrary to bacterioplankton, benthic bacterial biomass was higher in samples from 2012 (average 1.4 g C m<sup>-2</sup>)  
than in samples from 2011 (0.6 g C m<sup>-2</sup>). The diversity and biomass of benthic fauna were low, and several of the  
Ekman grabs contained no benthic macrofauna (0-1758 individuals per m<sup>2</sup>). The benthic fauna was dominated by  
15 *Chironomidae* and *Oligochaeta*.

*Fontinalis antipyretica* and *Chara spp.* dominated the macrophytes community in the lake but several more species  
(ca 20 including vascular plants, bryophytes and epiphytic algae) were identified during the macrophytes mapping  
of the lake. There were dense stands of macrophytes in wind sheltered littoral and lower coverage and biomasses  
of macrophytes in wind exposed littoral zones. Biomass measured in 2011 varied between less than 1 g to 1382 g  
20 Dry Weight (DW) m<sup>-2</sup>. The dive transect in 2013 did not show correlation of biomass with depth but showed that  
there were high biomasses of macrophytes also at the larger depth 16 m. Mean biomass at the different depths 1.6,  
2.5, 5.2, 9.2, and 16.3m were 155, 55, 100, 137 and 52 g DW m<sup>-2</sup>, respectively.

Primary production measured in glass bottles showed that respiration was higher than production in the pelagic  
habitat in both August 2012 and June 2013. Gross primary production in the water column was higher in August  
25 (mean 0.7 g C m<sup>-2</sup> h<sup>-1</sup>) than in June (mean 0.2 g C m<sup>-2</sup> h<sup>-1</sup>). As expected, considering the higher water temperature  
in late summer, the respiration was also higher in August (0.25 gC m<sup>-3</sup> h<sup>-1</sup>) than in June (0.006 g C m<sup>-3</sup> h<sup>-1</sup>). Benthic  
production and respiration measured in transparent chambers showed that primary production was higher than  
respiration in both June and August during day time (increase in oxygen concentrations). When including the dark  
hours and measuring for 24 hours, respiration was higher than primary production in the benthic habitat in August  
30 (decrease in oxygen concentration) even though primary production during light hours was higher in August (mean  
net production at 0.7 meters depth: 0.2 mg O<sub>2</sub> m<sup>-2</sup>) than in June (mean net production at 0.7 meters depth 0.03 mg  
O<sub>2</sub> m<sup>-2</sup>). The production measurements on pieces of macroalgae showed that *Chara sp.* had similar production at 2,  
5 and 10 meters depth although there was a trend towards lower primary production with depth (mean production  
0.038, 0.032, and 0.025 g O<sub>2</sub> gDW<sup>-1</sup> h<sup>-1</sup> at 2, 5, and 10 m, respectively). The production of *Cladophora sp.* at 5  
35 meters depth (mean production 0.022 min 0.013 max 0.035 gO<sub>2</sub> gDW<sup>-1</sup> h<sup>-1</sup>) was somewhat lower than the  
production of *Chara sp.* at corresponding depth (mean production 0.032, min 0.030, max 0.035).

$\delta^{13}\text{C}$  and  $\delta^{15}\text{N}$  in aquatic primary producers varied considerably between species (Figure 11). *Nostoc sp.* had a  $\delta^{13}\text{C}$   
of just  $-9\%$  and a  $\delta^{15}\text{N}$  of  $-0.4\%$ , while aquatic bryophytes and *Chara sp.* had  $\delta^{13}\text{C}$  and  $\delta^{15}\text{N}$  of  $-28\%$  and  $1.24\%$ ,



and -15‰ and 1.3‰, respectively. Aquatic consumers showed a much narrower range in  $\delta^{13}\text{C}$  and  $\delta^{15}\text{N}$ , with averages of  $-25 \pm 3\%$  and  $3.8 \pm 1.8\%$ , respectively (Figure 11).

## 6 Conclusion and data availability

5 This paper presents a large and comprehensive biogeochemical dataset covering both the terrestrial and aquatic environments in a periglacial catchment. By the inclusion of data from both liquid and solid phases, as well as abiotic and biotic components, this dataset allows for the calculation of whole-ecosystem mass balance budgets for a long list of elements. Together with the hydrological data presented by Johansson et al. (2015a), it also allows for calculations of fluxes between different catchment compartments, and the development of ecosystem models. We encourage anyone interested in using the dataset to contact the corresponding author regarding any questions about the data or the field site. To our knowledge, this dataset is unique for periglacial environments and is freely available at PANGAEA, <https://doi.org/10.1594/PANGAEA.860961>. A schematic figure of the PANGAEA tables is shown in Figure 13.

## 7 Author contribution

15 **Tobias Lindborg** prepared the manuscript with contributions from all co-authors and he has been involved in all fieldwork and data processing related to the data presented in the present paper. Tobias was also responsible for the overall field campaign strategy.

**Johan Rydberg** was involved in the sediment sampling and has written the associated sections in the present paper as well as taking active part in the writing of the whole manuscript.

20 **Mats Tröjbom** was involved in the chemistry sampling program and the data set preparation to the PANGAEA database.

**Sten Berglund** has been involved in the field work and has taken active part in the writing of the whole present paper.

25 **Emma Johansson** has been involved in the field work and with providing maps and figures to the present paper. She also prepared the dataset for storage in the PANGAEA database.

**Johannes Petrone** prepared the data set for storage in the PANGAEA database and have been involved in parts of the field work described in this paper.



**Ander Löfgren, Peter Saetre, Eva Andersson and Sara Nordén** have been involved in the terrestrial and aquatic sampling programs as well as writing associated texts.

**Micke Borgiel** was responsible for the macrophyte dive transect inventory.

**Gustav Sohlenius** was involved in the soil sampling.

- 5 **Ulrik Kautsky and Hjalmar Laudon** have been involved in field work and different measurement campaigns described in the present paper. They also contributed to the overall field campaign strategy.

**Tobias Lindborg** (ecology and chemistry) and **Emma Johansson** (hydrology and meteorology) are responsible for the GRASP field programme.

## 8 Acknowledgement

- 10 The work was conducted as a part of the Greenland Analogue Surface Project (GRASP) funded by the Swedish Nuclear Fuel and Waste Management Company (SKB). The authors would like to thank the Greenland Analogue Project (GAP) and Kangerlussuaq International Science Support (KISS) for providing logistical support throughout the years.

## 9 References

- 15 Anderson, N. J., Harriman, R., Ryves, D. B., and Patrick, S. T.: Dominant factors controlling variability in the ionic composition of West Greenland lakes, *Arctic Antarctic Alpine Res.*, 33, 418-425, 2001.
- Anderson, N. J., Brodersen, K. P., Ryves, D. B., McGowan, S., Johansson, L. S., Jeppesen, E., and Leng, M. J.: Climate versus in-lake processes as controls on the development of community structure in a low-Arctic lake (South-West Greenland), *Ecosystems*, 11, 307–324, doi:10.1007/s10021-007-9123-y, 2008.
- 20 Anderson, N. J., D’Andrea, W., and Fritz, S. C.: Holocene carbon burial by lakes in SW Greenland, *Global Change Biology*, 15, 2590-2598, doi:10.1111/j.1365-2486.2009.01942.x, 2009.
- 25 Appleby, P. G.: Three decades of dating recent sediments by fallout radionuclides: a review, *The Holocene*, 18, 83-93, doi:10.1177/0959683607085598, 2008.
- Bergstrom, A. K., Blomqvist, P., Jansson, M.: Effects of atmospheric nitrogen deposition on nutrient limitation and phytoplankton biomass in unproductive Swedish lakes, *Limnology and Oceanography*, 50, 987-994, 2005.
- 30 Bronk Ramsey, C.: Bayesian analysis of radiocarbon dates, *Radiocarbon*, 51, 337-360, 2009.



- Cappelen, J. (Ed.): Weather observations from Greenland 1958-2015 – Observation data with description, Danish Meteorological Institute, Copenhagen, Denmark, DMI Report 16-08, 2016.
- 5 Chapin F. S., Shaver G. R., Giblin A. E., Nadelhoffer K. J. and Laundre J. A.: Responses of arctic tundra to experimental and observed changes in climate, *Ecology* 76, 694-711, 1995.
- Gälman, V., Rydberg, J., Sjöstedt de-Luna, S., Bindler, R., Renberg, I.: Carbon and nitrogen loss rates during ageing of lake sediment: Changes over 27 years studied in a varved lake sediment, *Limnology and Oceanography*, 53, 1076-1082, 2008.
- 10 Harper, J., Hubbard, A., Ruskeeniemi, T., Claesson Liljedahl, L., Lehtinen, A., Booth, A., Brinkerhoff, D., Drake, H., Dow, C., Doyle, S., Engström, J., Fitzpatrick, A., Frape, S., Henkemans, E., Humphrey, N., Johnson, J., Jones, G., Joughin, I., Klint, K. E., Kukkonen, I., Kulessa, B., Londowski, C., Lindbäck, K., Makahnouk, M., Meierbachtol, T., Pere, T., Pedersen, K., Petterson, R., Pimentel, S., Quincey, D., Tullborg, E. L., and van As, D.:  
15 The Greenland Analogue Project Yearly Report 2010, Svensk Kärnbränslehantering AB, Stockholm, Sweden, Report SKB R-11-23, 2011.
- Helcom: Manual for Marine Monitoring in the Combine Programme of Helcom, available at: <http://helcom.fi/Documents/Action%20areas/Monitoring%20and%20assessment/Manuals%20and%20Guidelines/Manual%20for%20Marine%20Monitoring%20in%20the%20COMBINE%20Programme%20of%20HELCOM.pdf>, last access: 4 April 2016.
- 20 Hindshaw R. S., Lang S. Q., Bernasconi S. M., Heaton T. H. E., Lindsay M. R. and Boyd E. S.: Origin and temporal variability of unusually low  $\delta^{13}\text{C}$ -DOC values in two high Arctic catchments, *Journal of Geophysical Research-Biogeosciences*, 121, doi: 10.1002/2015JG003303, 2016.
- 25 Hua, Q., Barbetti, M., and Rakowski, A. Z.: Atmospheric radiocarbon for the period 1950-2010, *Radiocarbon*, 55, 2059-2072, 2013.
- 30 Jessen, S., Holmslykke, H. D., Rasmussen, K., Richardt, N., and Holm, P. E.: Hydrology and pore water chemistry in a permafrost wetland, Ilulissat, Greenland, *Water Resour. Res.*, 50, 4760–4774, doi:10.1002/2013WR014376, 2014.
- Johansson, J.-Å., Olofsson, H., Ramberg, L.: Studier av zooplanktons konsumtion i Botjärn, *Limnologiska inst.*,  
35 Uppsala universitet, Sweden, Klottenprojektets rapport nr 5, 27 pp., 1976.
- Johansson, E., Berglund, S., Lindborg, T., Petrone, J., van As, D., Gustafsson, L.-G., Näslund, J.-O., and Laudon, H.: Hydrological and meteorological investigations in a periglacial lake catchment near Kangerlussuaq, west Greenland – presentation of a new multi-parameter data set. *Earth Syst. Sci. Data*, 7, 93–108, doi:10.5194/essd-7-93-2015, 2015a.
- 40



- 5  
Johansson, E., Gustafsson, L.-G., Berglund, S., Lindborg, T., Selroos, J.-O., Claesson Liljedahl, L., and Destouni, G.: Data evaluation and numerical modeling of hydrological interactions between active layer, lake and talik in a permafrost catchment, Western Greenland, *J. Hydrology*, 527, 688–703, doi:10.1016/j.jhydrol.2015.05.026, 2015b.
- 10  
Kautsky, U.: Ecosystem processes in coastal areas of the Baltic Sea, Ph.D. thesis, Department of Zoology, Stockholm University, Sweden, ISBN 91-87272-39-3, 1995.
- 15  
Loferer-Krössbacher, M., Klima, J., and Psenner, R.: Determination of bacterial cell dry mass by transmission electron microscopy and densitometric image analysis, *Appl. Environ. Microbiol.*, 64, 688–694, 1998.
- 20  
Lundin, E. J., Klaminder, J., Giesler, R., Persson, A., Olefeldt, D., Heliasz, M., Christensen, T. R., Karlsson, J.: Is the subarctic landscape still a carbon sink? Evidence from a detailed catchment balance, *Geophys. Res. Lett.*, 43, 1988–1995, doi:10.1002/2015GL066970, 2016.
- 25  
McGuire, A. D., Anderson, L. G., Christensen, T. R., Dallimore, S., Guo, L., Hayes, D. J., Heimann, M., Lorenson, T. D., Macdonald, R. W., and Roulet, N.: Sensitivity of the carbon cycle in the Arctic to climate change, *Ecol. Monogr.*, 79, 523–555, doi:10.1890/08-2025.1, 2009.
- 30  
Moy, F. E., Dahl, K., Karlsson, J., Kautsky, H., Ruuskanen, A., Carstensen, J.: Nordic intercalibration of hard bottom macroalgae monitoring methodologies, Algamony, Nordic Council of Ministers, Copenhagen, Denmark, TemaNord 2010:543, 2010.
- 35  
Olrik, K., Blomqvist, P., Brettum, P., Cronberg, G., and Eloranta, P.: Methods for quantitative assessment of phytoplankton in freshwaters, Part 1: Sampling, processing, and application in freshwater environmental monitoring programmes, Naturvårdsverket, Stockholm, Sweden, Rapport 4860, 1998.
- 40  
Palmtag J., Hugelius G., Lashchinskiy N., Tamstorf M.P., Richter A., Elberling B., and Khury P.: Storage, landscape distribution, and burial history of soil organic matter in contrasting areas of continuous permafrost, *Arctic Antarctic and Alpine Research*, 47, 71-88, doi: 10.1657/aaar0014-027, 2015.
- Petrone, K., Buffam, I. and Laudon, H. (2007). Hydrologic and biotic control of nitrogen export during snowmelt: a combined conservative and reactive tracer approach. *Water Resources Research*, 43, W06420, doi:10.1029/2006WR005286.
- Petrone, J., Sohlenius, G., Johansson, E., Lindborg, T., Näslund, J. O., and Strömngren, M.: Using ground-penetrating radar, topography and classification of vegetation to model the sediment and active layer thickness in a periglacial lake catchment, Western Greenland, *Earth Syst. Sci. Data Disc.*, submitted.



- 5 Reimer, P. J., Bard, E., Bayliss, A., Beck, J. W., Blackwell, P. G., Bronk Ramsey, C., Buck, C. E., Cheng, H., Edwards, R. L., Friedrich, M., Grootes, P. M., Guilderson, T. P., Haflidason, H., Hajdas, I., Hatté, C., Heaton, T. J., Hoffmann, D. L., Hogg, A. G., Hughen, K. A., Kaiser, K. F., Kromer, B., Manning, S. W., Niu, M., Reimer, R. W., Richards, D. A., Scott, E. M., Southon, J. R., Staff, R. A., Turney, C. S. M., and van der Plicht, J.: IntCal13 and Marine13 radiocarbon age calibration curves 0-50000 years cal BP, *Radiocarbon*, 55, 1869-1887, 2013.
- Renberg I. and Hansson, H.: The HTH sediment corer, *J. Paleolimnol.*, 40, 655-659, doi:10.1007/s10933-007-9188-9, 2008.
- 10 Ruttner-Kolisko, A.: Suggestions for biomass calculations of plankton rotifers, *Arch. Hydrobiol. Beih. Ergebn. Limnol.*, 8, 71–76, 1977.
- Rysgaard, S. and Glud, R. N. (Eds.): Carbon cycling in Arctic marine ecosystems: Case study Young Sound, the Commission for Scientific Research in Greenland, Copenhagen, Denmark, *Meddelelser om Grønland, Bioscience*
- 15 58, 2007.
- Rydberg, J.: Wavelength dispersive X-ray fluorescence spectroscopy as a fast, non-destructive and cost-effective analytical method for determining the geochemical composition of small loose-powder sediment samples, *J. Paleolimnol.*, 52, 265-276, doi:10.1007/s10933-014-9792-4, 2014.
- 20 Rydberg, J., Lindborg, T., Solenius, G., Reuss, N., Olsen, J., and Laudon, H.: The importance of eolian input on lake-sediment geochemical composition in the dry proglacial landscape of western Greenland, *Arctic Antarctic Alpine Res.*, 48, 93-109, doi:10.1657/AAAR0015-009, 2016.
- 25 Ryves, D. B., McGowan, S., and Anderson, N. J.: Development and evaluation of a diatom-conductivity model from lakes in West Greenland, *Freshwater Biology*, 47, 995–1014, doi:10.1046/j.1365-2427.2002.00832.x, 2002.
- Ryves, D. B., Battarbee, R. W., and Fritz, S. C.: The dilemma of disappearing diatoms: incorporating diatom dissolution data into palaeoenvironmental modelling, *Quaternary Science Reviews*, 28, 120-136, doi:10.1016/j.quascirev.2008.08.021, 2009.
- 30 Saros, J. E., Strock, K. E., McCue, J., Hogan, E., and Anderson, N. J.: Response of *Cyclotella* species to nutrients and incubation depth in Arctic lakes, *J. Plankton Res.* 36, 450–460, doi:10.1093/plankt/fbt126, 2014.
- 35 Schuur, E. A. G., McGuire, A. D., Schädel, C., Grosse, G., Harden, J. W., Hayes, D. J., Hugelius, G., Koven, C. D., Kuhry, P., Lawrence D. M., Natali S. M., Olefeldt, D., Romanovsky V. E., Schaefer, K., Turetsky, M. R., Treat, C. C., and Vonk, J. E.: Climate change and the permafrost carbon feedback, *Nature*, 520, 171-179, doi:10.1038/nature14338, 2015.
- 40 Smol, J. P.: Climate change: A planet in flux, *Nature*, 483, S12–S15, doi:10.1038/483S12a, 2012.



Smol J. P., Douglas M. S. V.: From controversy to consensus: making the case for recent climate change in the Arctic using lake sediments, *Front Ecol Environ*, 5, 466-474, 2007.

5 Sobek, S., Anderson, N. J., Bernasconi, S. M., and Del Sontro, T.: Low organic carbon burial efficiency in Arctic lake sediments, *J. Geophys. Res.: Biogeosciences*, 119, doi:10.1002/2014JG002612, 2014.

10 Solomon, C. T., Jones, S. E., Weidel, B. C., Buffam, I., Fork, M. L., Karlsson, J., Larsen, S., Lennon, J. T., Read, J. S., Sadro, S., and Saros, J. E.: Ecosystem consequences of changing inputs of terrestrial dissolved organic matter to lakes: Current knowledge and future challenges, *Ecosystems*, 18, 376–389, doi:10.1007/s10021-015-9848-y, 2015.

15 Tarnocai C, Canadell JG, Schuur EAG, Kuhry P, Mazhitova G, Zimov S.: Soil organic carbon pools in the northern circumpolar permafrost region, *Global Biogeochemical Cycles*, 23, GB2023, doi:10.1029/2008GB003327, 2009.  
van Tatenhove, F. G. M. and Olesen, O. B.: Ground temperature and related permafrost characteristics in West Greenland, *Permafrost Periglac. Proc.*, 5, 199–215, 1994.

20 Whiteford, E. J., McGowan, S., Barry, C. D., Anderson, N. J.: Seasonal and regional controls of phytoplankton production along a climate gradient in South-West Greenland during ice-cover and ice-free conditions, *Arctic Antarctic Alpine Res.*, 48, 139–159, doi:10.1657/AAAR0015-003, 2016.

## 10 Table and Figure Captions

25 **Table 1. The five main vegetation types and the vegetation-free barren land within the catchment area and their respective areal coverage. The number of investigated plots (n) in August 2011 and short characterisations of the vegetation types are also given.**

Vegetation type	Area (m <sup>2</sup> )	n	Vegetation
Dry grassland	231655	1	Mainly tufted species from the genus <i>Kobresia/Carex</i> with a prominent litter layer found on exposed places
Meadow	445814	6	Mainly grasses and herbs almost lacking any woody species. Also some lichens and bryophytes.
<i>Betula</i>	156056	5	Birch ( <i>Betula nana</i> ) dominating in dense stands with a dominating litter layer in southfacing slopes and a dominating bryophyte layer on northfacing slopes.
Wetland	83975	3	<i>Carex</i> and grasses dominates the field layer and bryophytes cover the bottom layer
<i>Salix</i>	6278	0	<i>Salix</i> dominating, but kept close to ground not reaching more than a height of app. 0.8 m



Barren	257431	0	Scares of exposed morain, where the silt layer has been removed by the wind. Void of vegetation.
--------	--------	---	--

5 **Table 2. Overview of the laboratories and analytical methods that have been used to produce the presented data set.**

Parameter	Sample type	Laboratory - Analytical method		
Organic content	Solid	EMG, UmU - LOI	SLU, Uppsala - LOI	ALS Scandinavia - LOI
Tot-C	Solid	SLU, Umeå - EA-IRMS	SLU, Uppsala - EA	ALS Scandinavia - EA
TOC, DOC	Water	DEEP, SU - NPOC	ALS Scandinavia - NPOC/TC-IC	
TIC, DIC	Water	DEEP, SU - IR after acidification	ALS Scandinavia - IR after acidification	
$\delta^{13}C$	Solid	SLU, Umeå - EA-IRMS	ISO-Analytical - EA-IRMS	
	Water	IGV, SU - IRMS		
Tot-N	Solid	SLU, Umeå - EA-IRMS	SLU, Uppsala - EA	ALS Scandinavia - EA
	Water	DEEP, SU - SFA	ALS Scandinavia - CFA	
NH <sub>4</sub> <sup>+</sup> , NO <sub>2</sub> <sup>-</sup> , NO <sub>3</sub> <sup>-</sup>	Solid	ALS Scandinavia - IC		
	Water	DEEP, SU - SFA	ALS Scandinavia - CFA	
$\delta^{15}N$	Solid	SLU, Umeå - EA-IRMS	ISO-Analytical - EA-IRMS	
Tot-P	Water	DEEP, SU - SFA		
	Filters	DEEP, SU - combustion-SFA		
PO <sub>4</sub> <sup>3-</sup>	Solid	ALS Scandinavia - CFA		
	Water	DEEP, SU - SFA		
Chlorophyll-a	Filters	DEEP, SU - Spectrometry		
Major+trace elements	Solid	EMG, UmU - WD-XRF	ALS Scandinavia - ICP-SFMS	
	Water	ALS Scandinavia - ICP-SFMS		
Si	Water	DEEP, SU - SFA		
Br, Cl, F	Solid	ALS Scandinavia - IC (F only)		
	Water	ALS Scandinavia - IC		
SO <sub>4</sub> <sup>2-</sup>	Solid	ALS Scandinavia - IC		
	Water	ALS Scandinavia - IC		
$\delta^{34}S$	Water	IGV, SU - EA-IRMS		
$\delta^2H$	Water	SLU, Umeå - Liquid water isotope analyzer		
$\delta^{18}O$	Water	SLU, Umeå - Liquid water isotope analyzer		
<sup>234</sup> U, <sup>235</sup> U	Water	FOI - ICP-SFMS		
<sup>14</sup> C	Solid	C-14 dating laboratory, LU - AMS		
<sup>210</sup> Pb, <sup>137</sup> Cs, <sup>226</sup> Ra etc.	Solid	Flett Research - Alpha spectroscopy ( <sup>210</sup> Pb only)	Nutech, DTU - Gamma spectroscopy	

EMG - Dept. of Ecology and Environmental Science  
 SLU - Swedish University of Agricultural Sciences  
 DEEP - Dept. of Ecology, Environment and Plant Science  
 IGV - Dept. of Geological Sciences  
 FOI - Swedish defense research agency  
 LOI - Loss on Ignition  
 EA - Elemental analysis  
 IRMS - Isotope-ratio mass spectroscopy  
 NPOC - Non-purgable organic carbon  
 TC-IC - Total carbon - Inorganic carbon  
 IR - IR detector  
 SFA - Segmented flow analysis  
 CFA - Continuous flow analysis  
 IC - Liquid ion chromatography  
 XRF - X-ray fluorescence spectroscopy  
 ICP-SFMS - Inductively coupled plasma-sector field mass spectroscopy  
 AMS - Accelerated mass spectroscopy



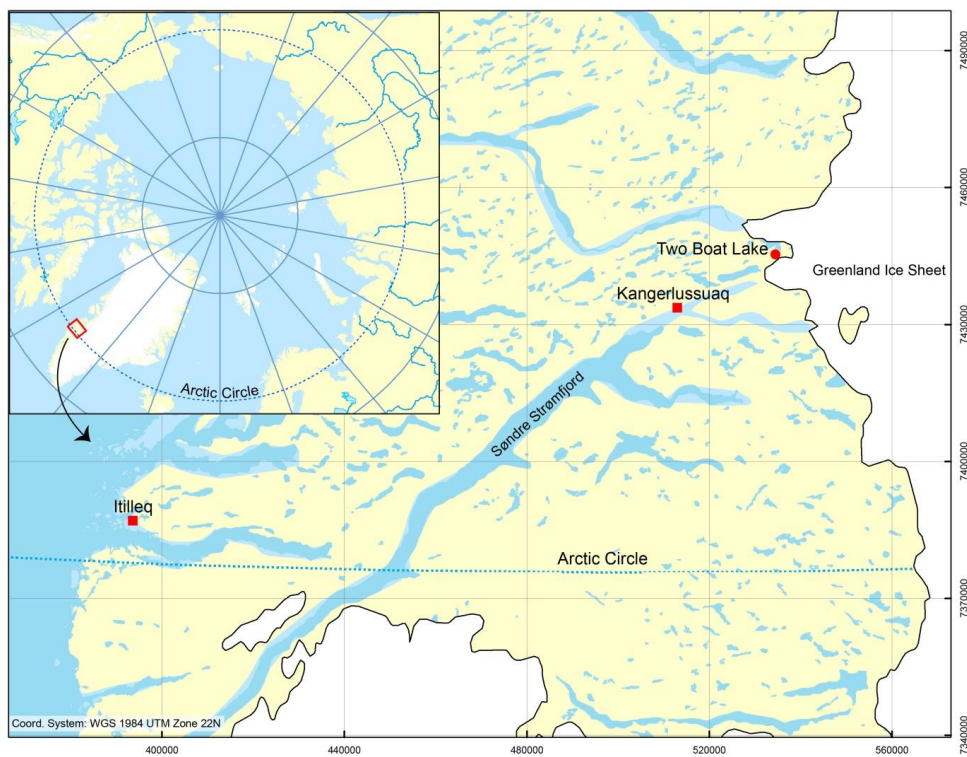


Figure 1. Map of West Greenland and location of Two Boat Lake catchment area. Modified from Johansson et al. (2015a).



Figure 2. Photo heading north east of the Two Boat Lake catchment. To the right the Greenland ice sheet is seen.

5

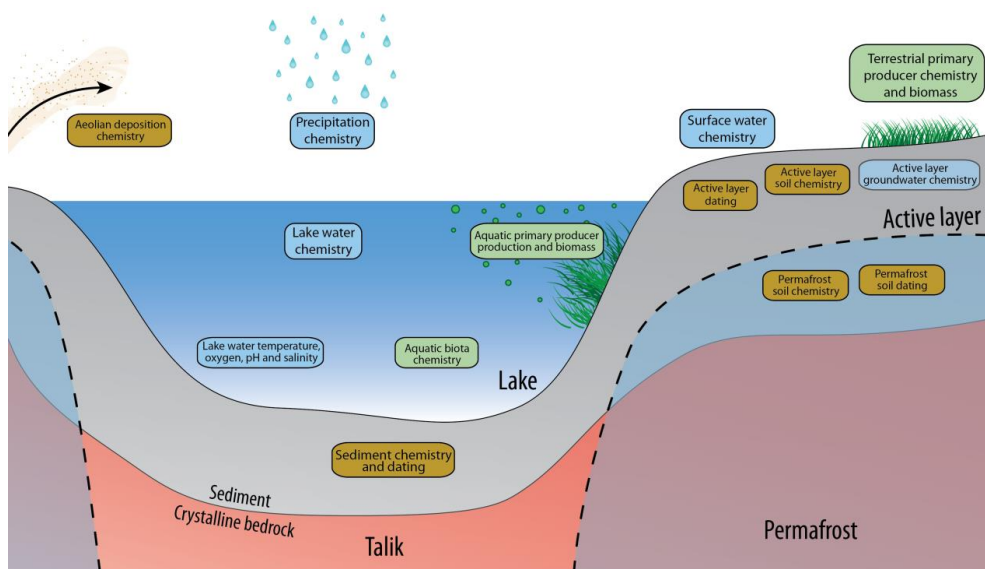


Figure 3. Conceptual model of the TBL catchment describing major ecosystem entities (boxes) in the landscape. Boxes are divided into water (blue), biotic (green) and solid matter (brown).

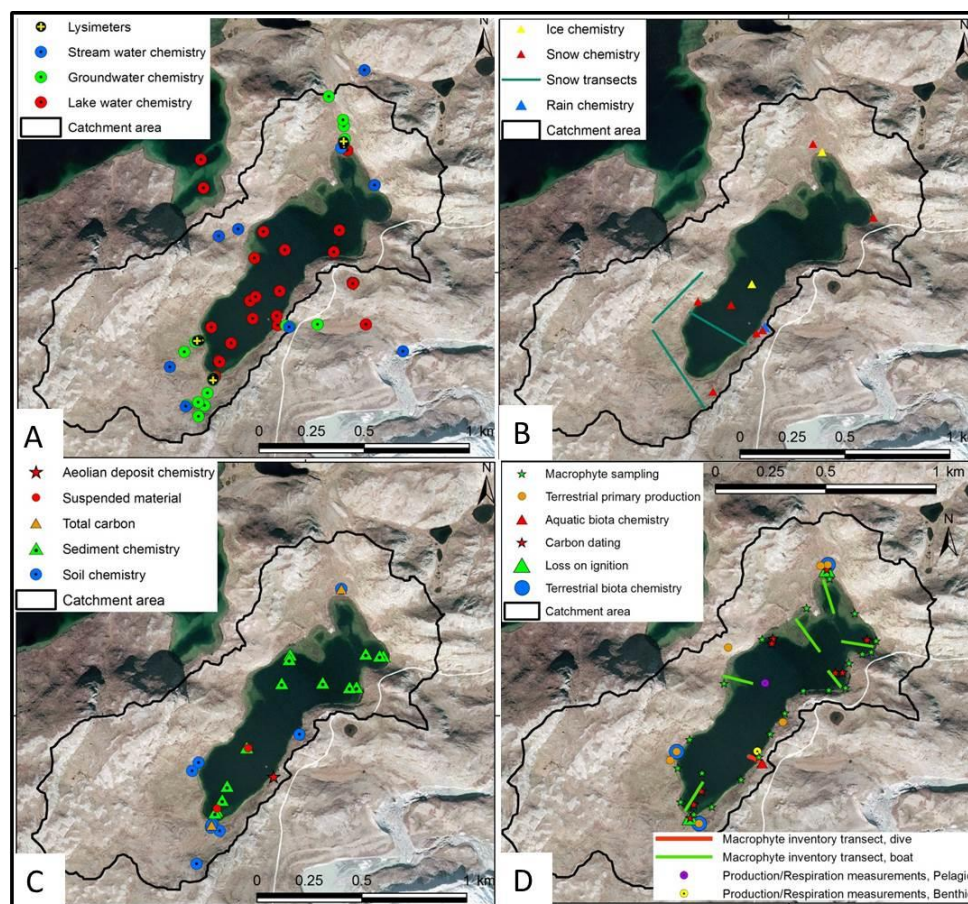


Figure 4. Maps illustrating water sampling points, installations and measurement sites in the TBL catchment for groundwater and surface water (A), ice and precipitation (B), soils and sediment (C) and biota, carbon dating and soil loss on ignition (D). For information on coordinates and ID for each sampling location, see PANGAEA database, <http://doi.pangaea.de/10.1594/PANGAEA.860961>.

5



Figure 5. Photos of lysimeter flasks (A), lysimeter installation (B), and respiration chambers for benthic production/respiration measurements (C and D).

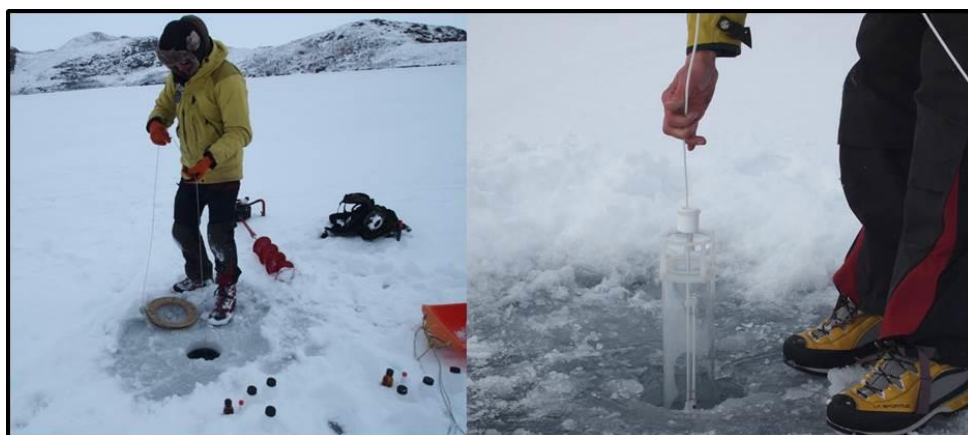


Figure 6. Lake water sampling on the lake ice using a Ruttner sampler.

5

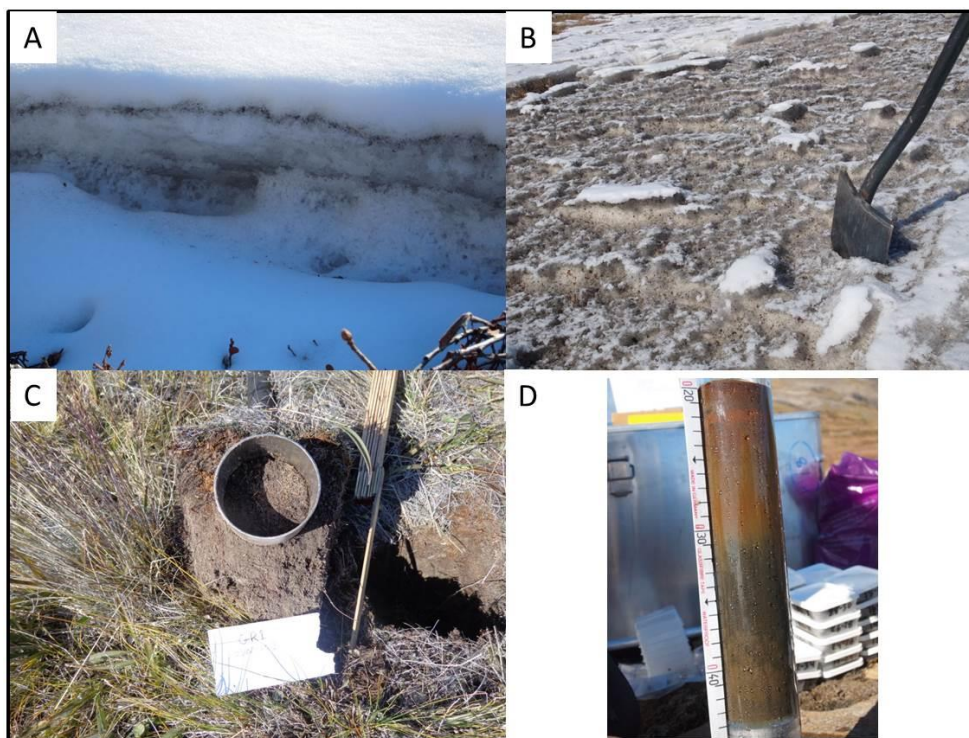


Figure 7. Photos of snow with inclusions of eolian deposits (A and B), soil sampling in steel cylinders (C) and sediment core from the lake bottom (D).

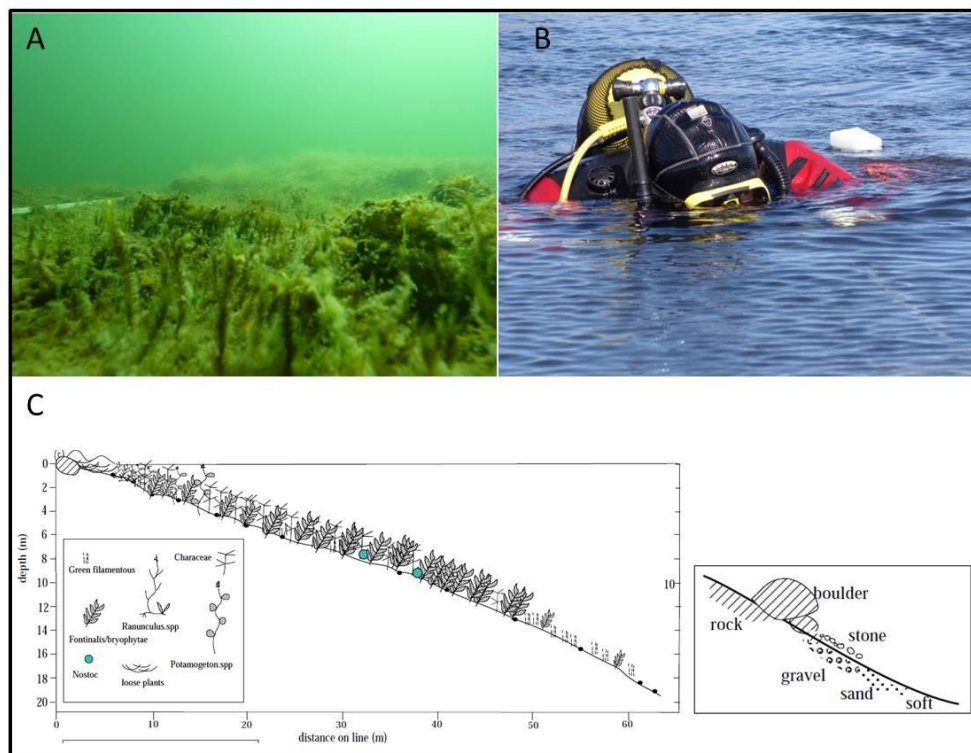


Figure 8. Photos from the macrophyte inventory (A, B) and sketches from the resulting inventory transect (C).

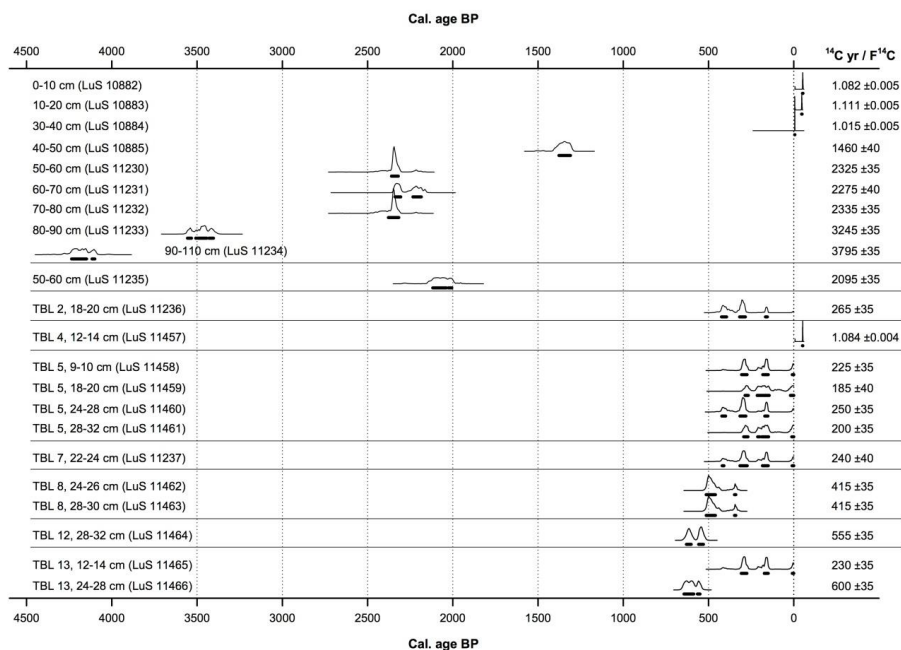
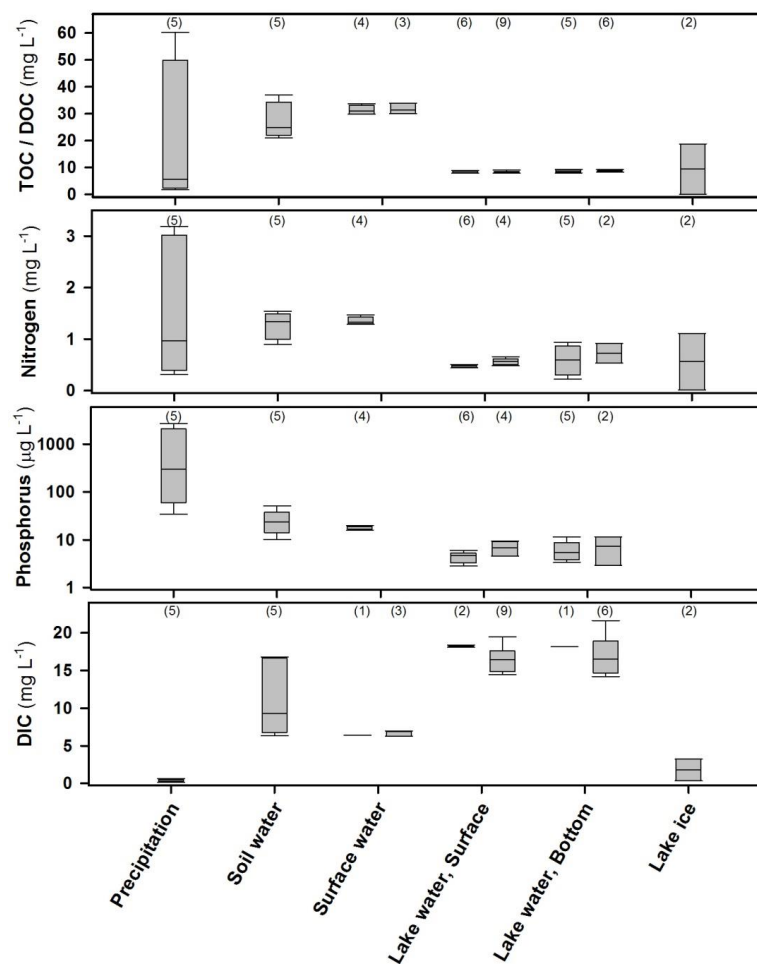




Figure 9. Calibrated age distributions for all  $^{14}\text{C}$  dated soil and sediment samples. The thin line represents the probability distribution for each respective sample, and the thick black line shows the  $1\sigma$  age distributions. The column to the left gives the sample name followed by the laboratory number, while the numbers to the right is the uncalibrated  $^{14}\text{C}$ -dates (or F $^{14}\text{C}$ -values for samples with a modern carbon composition) with their respective error estimates.



5

Figure 10. Box plot showing the concentrations of TOC/DOC, total nitrogen, total phosphorus and DIC in water samples from different catchment compartments. For surface and lake water, the box to the left represents unfiltered samples, while the box to the right represents filtered samples. The boxes denote the median, and the 25th and 75th percentiles, while the whiskers denote the 10th and 90th percentiles. The numbers within parenthesis represent the number of samples for each sample type.

10

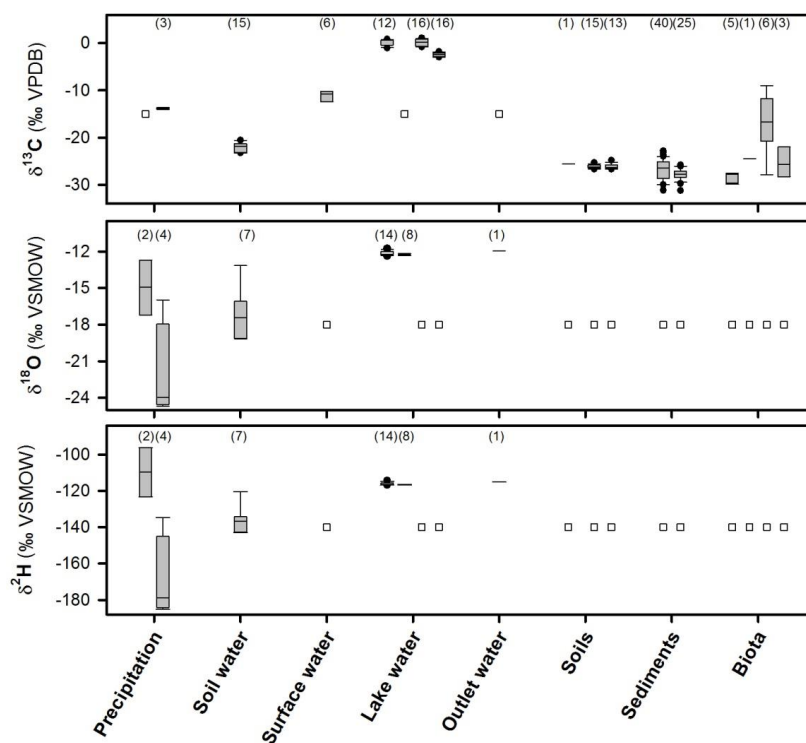


Figure 11. Box plot showing the isotopic composition of carbon, oxygen and hydrogen in different sample types. The two boxes for precipitation represent rain (left) and snow (right). The four boxes for lake water represent (from left to right), surface and bottom water from locations other than the lake centre, and surface and bottom water from the lake centre. The three boxes for soils represent silt (left), peaty-silt active layer (middle) and peaty-silt permafrost (right). The two boxes for sediments represent samples collected from water depths <14 m (left) and >14 m (right), respectively. The four boxes for biota represent (from left to right), terrestrial primary producers, terrestrial consumers, aquatic primary producers and aquatic consumers. The boxes denote the median, and the 25th and 75th percentiles, while the whiskers denote the 10th and 90th percentiles. Outliers are marked with a black dot, and the open squares mark that no data is available for this sample type. The numbers within parenthesis represent the number of samples for each sample type.



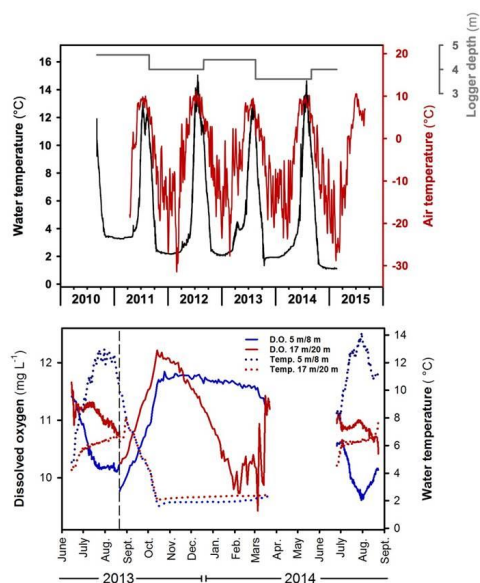


Figure 12. Upper figure: Graph displaying the variations in lake water temperature at about 4 m water depth and air temperature during the period from 2011 to 2015. The black line represents lake water temperature, the red line the air temperature, and the grey line represents the exact depth of the lake-water temperature logger. Lower figure: Graph displaying the variations in dissolved oxygen and temperature during measurements in 2013 and 2014. The dashed line represents the time when the depth of the loggers was changed from 5 and 17 m to 8 and 20 m.

5



Folder	File name	Included sheets
PANGAEA_time-series	Lake water temp and DO	
PANGAEA_Sampledata	Water isotopes	2H/18O, C13, 34S, U234/235
	Water nutrients	
	Water ICP-MS	
	Soils	LOI, Tot C, C13, C14
	Lake sediment	
	Terrestrial biota chemistry	
	Terrestrial vegetation/soils	Aug 2011, June 2014 (Biomass, SOC)
	Aquatic biota chemistry	
	Bacterioplankton	Aug 2011, April 2012, Aug 2012 and June 2013
	Bentic bacteria	Aug 2011 and Aug 2012
	Bentic fauna	2011, 2012 and 2013
	Bentic prod/resp	June 2013 and Aug 2013
	Macroalgae production	Chara and cladophora
	Macrophytes	Coverage, biomass, dive transect, production, species
	Pelagic prod/resp	Aug 2012 and June 2013
	Phytoplankton	Aug 2011, April 2012, and Aug 2012
	Zooplankton	Aug 2011, Aug 2012, and June 2013
	Multiparametersond	2011, 2012, 2013 and 2014

Figure 13. Illustration of folders, resulting data-tables and associated sheets in the PANGAEA-database.