

This discussion paper is/has been under review for the journal Earth System Science Data (ESDD). Please refer to the corresponding final paper in ESDD if available.

# Observations of the altitude of the volcanic plume during the eruption of Eyjafjallajökull, April–May 2010

P. Arason, G. N. Petersen, and H. Bjornsson

Icelandic Meteorological Office – Vedurstofa Islands, Bustadavegur 9, IS-150 Reykjavik, Iceland

Received: 12 May 2011 – Accepted: 16 May 2011 – Published: 23 May 2011

Correspondence to: P. Arason (arason@vedur.is)

Published by Copernicus Publications.

## Altitude of the volcanic plume during the eruption of Eyjafjallajökull

P. Arason et al.

Title Page

Abstract

Instruments

Data Provenance & Structure

Tables

Figures

⏪

⏩

◀

▶

Back

Close

Full Screen / Esc

Printer-friendly Version

Interactive Discussion



## Abstract

The eruption of Eyjafjallajökull volcano in 2010 lasted for 39 days, 14 April–23 May. The eruption had two explosive phases separated by a phase with lava formation and reduced explosive activity. The height of the plume was monitored every 5 min with a C-band weather radar located in Keflavík International Airport, 155 km distance from the volcano. Furthermore, several web cameras were mounted with a view of the volcano, and their images saved every five seconds. Time series of the plume-top altitude were constructed from the radar observations and images from a web camera located in the village Hvolsvöllur at 34 km distance from the volcano. This paper presents the independent radar and web camera time series and performs cross validation. The echo top radar series of the altitude of the volcanic plume are publicly available from the Pangaea Publishing Network (<http://doi.pangaea.de/10.1594/PANGAEA.760690>).

## 1 Introduction

An explosive volcanic eruption started in the summit of the ice-capped Eyjafjallajökull volcano in southern Iceland on 14 April 2010. The volcanic plume from the eruption was monitored using a C-band weather radar located 155 km from the volcano, and by web cameras situated near the volcano, as well as by visual observations from the ground and air.

The summit eruption had two explosive phases, 14–18 April and 3–20 May. During these phases the eruption plume reached an altitude ranging from 5 to 10 km. Between the two explosive phases the volcanic plume was much lower, with altitude ranging from below radar detection level to about 5 km. A short meteorological overview of the eruption was presented by Petersen (2010).

The eruption of Eyjafjallajökull caused major disruption of air traffic in northern and western Europe as upper level winds advected fine-grained silicic ash rapidly south-eastward and later southward. During and after the eruption numerous scientific ques-

ESSDD

4, 1–25, 2011

### Altitude of the volcanic plume during the eruption of Eyjafjallajökull

P. Arason et al.

Title Page

Abstract

Instruments

Data Provenance & Structure

Tables

Figures

⏪

⏩

◀

▶

Back

Close

Full Screen / Esc

Printer-friendly Version

Interactive Discussion



tions have surfaced, regarding the specifics of how high the volcanic plume rose, and how far the ash cloud was dispersed.

The purpose of this article is to describe the time series of the altitude of the volcanic plume as measured by the weather radar and the web camera that had the best view of the eruption plume. These are unique time series with a time resolution of 5 min covering the duration of the eruption from 14 April to 23 May 2010.

In the following section we give detailed description of the weather radar and its placement, specifications and limitations. Section 3 contains a similar, albeit shorter, discussion for the web camera. In Sect. 4 we present the two data series and cross validate them in Sect. 5. Finally there are some concluding remarks in Sect. 6.

## 2 The weather radar at Keflavík airport: specifications and limitations

### 2.1 Specifications

The weather radar at Keflavík International Airport in southwest Iceland was the only operational weather radar in Iceland during the eruption. It is an Ericsson C-band radar located about 3 km north of the airport and 155 km from the Eyjafjallajökull volcano (Fig. 1). The radar monitors precipitation and precipitating clouds within a maximum range of 480 km from its location. The radar was upgraded to a doppler radar in March 2010 and the weather data management software from SELEX-Gematronic was updated during April 2010 from Rainbow<sup>®</sup>3 to Rainbow<sup>®</sup>5. Due to these changes operational doppler scans began during the eruption, towards the end of April. The description and specifications of the radar system are given in Table 1.

The radar was installed in 1991, and prior to the Eyjafjallajökull eruption it had been successfully used for monitoring five volcanic eruptions in Iceland: Hekla in 1991, only a few days after the radar became operational (Larsen et al., 1991), Gjálp in 1996, Grímsvötn in 1998, Hekla in 2000 (Lacasse et al., 2004) and Grímsvötn in 2004 (Vogfjörd et al., 2005; Oddson, 2007).

## Altitude of the volcanic plume during the eruption of Eyjafjallajökull

P. Arason et al.

Title Page

Abstract

Instruments

Data Provenance & Structure

Tables

Figures



Back

Close

Full Screen / Esc

Printer-friendly Version

Interactive Discussion



## Altitude of the volcanic plume during the eruption of Eyjafjallajökull

P. Arason et al.

Title Page

Abstract

Instruments

Data Provenance & Structure

Tables

Figures

◀

▶

◀

▶

Back

Close

Full Screen / Esc

Printer-friendly Version

Interactive Discussion

The current scanning strategy for normal weather monitoring is to make 240 km reflectivity scans for 12 elevations (radar inclination angles) every 15 min (at 00, 15, 30 and 45 min past the hour) as well as 120 km doppler scans for nine elevations every 15 min (at 7, 22, 37 and 52 min past the hour). In case of a volcanic eruption within a radius of 240 km from the radar, the strategy is to make 240 km reflectivity scans every five minutes (except at 5 and 35 min past the hour when 120 km doppler scans are made).

Volume reflectivity data and images are archived at the Icelandic Meteorological Office. These include images of maximum reflectivity (dBZ) over all available altitudes, plain radar sweeps of reflectivity (dBZ) increasing in altitude with distance from the radar, pseudo constant altitude reflectivity (Pseudo CAPPI, dBZ) at 2 km a.s.l. and the maximum altitude (km a.s.l.) of reflectivity.

The images of the maximum altitude of reflectivity, or echo top images, show the highest vertical level from which detectable radar echoes are measured. Figure 2 shows an example of an echo top image from the eruption period. Eyjafjallajökull is located at the southern coast of Iceland and here the volcanic plume altitude was observed at 8.1 km.

## 2.2 Detection limits and uncertainties

The scanned images are obtained as the radar beam circles from an initial angle of  $0.5^\circ$ , increasing the elevation angle at the end of each circle to a maximum angle of  $40^\circ$  for reflectivity scans. For a list of elevation angles applied see Table 1. The total scanning time is two minutes and the time stamp of an image is the initial time of each scan. The cloud altitude detected by the weather radar for standard atmospheric refraction can be calculated by the elevation angle of the radar beam, the range from the radar to the point of interest, and the curvature of the earth:

$$H = \sqrt{r^2 + (kR)^2 + 2rkR\sin(\phi)} - kR + H_o \quad (1)$$

where  $H$  is the altitude of the radar beam a.s.l. (km),  $H_0$  is the altitude a.s.l. (km) of the radar antenna,  $r$  is the range (km),  $\phi$  is the elevation angle (degrees),  $R$  is Earth's radius,  $R = 6371$  km, and  $k = 4/3$  for standard atmospheric conditions (Rhinehart, 1991).

Furthermore, the width of the beam is a function of the range, and the half-power beam width,  $\theta$  (degrees):

$$W = r \tan(\theta) \quad (2)$$

When this is applied to the Keflavík radar, in regards to an eruption in Eyjafjallajökull, the lowest detectable cloud height above Eyjafjallajökull would be 2.7 km a.s.l. and the beam width 2.4 km. However, the lowest part of the beam does not reach Eyjafjallajökull. It is blocked by a mountain ridge, Brennisteinsfjöll (600 m a.s.l.), at a distance of 43 km from the radar. As a consequence the lowest angle of the beam reaching Eyjafjallajökull is  $0.59^\circ$  or 2.9 km in altitude. In fact, partial beam blockage of the lowest elevation angle in the direction of Eyjafjallajökull has been estimated to be at least 60 %, using a 1 km digital elevation model (Crochet, 2009). This partial beam blockage means that the radar software assumes the beam reflection to be lower than it actually is, which can lead to a low bias in plume height estimates when the plume is only seen by the lowest beam.

An echo top algorithm is applied on the polar volume reflectivity raw data. For each horizontal pixel a vertical column of available data, on elevation planes, is derived for the height interval specified. The height interval for the Keflavík radar is 0 to 12 km altitude. The echo top is defined as the highest altitude where the threshold reflectivity is exceeded, with the threshold reflectivity for the Keflavík radar being  $-20$  dBZ. An interpolation of the reflectivity value of the highest beam exceeding the threshold and the reflectivity value of the beam above are used to estimate the echo top altitude.

This means that the altitude given as echo top not only depends on the elevation angle and the range but also on the observed reflectivity values. Furthermore, the larger the range, the larger the interval between the elevation angle levels becomes resulting in larger uncertainties in the echo top height estimates. Figure 3 shows the

## Altitude of the volcanic plume during the eruption of Eyjafjallajökull

P. Arason et al.

Title Page

Abstract

Instruments

Data Provenance & Structure

Tables

Figures

⏪

⏩

◀

▶

Back

Close

Full Screen / Esc

Printer-friendly Version

Interactive Discussion



seven lowest elevation angles of the current scanning strategy and their height above sea level for a distance of up to 200 km. The half-power beam width of  $0.9^\circ$  results in an overlapping of the beams for the three lowest elevation angles,  $0.5\text{--}1.3^\circ$ . When the radar only detects the plume with the lowest beam ( $0.5^\circ$ ), the height is assumed to be at the center of the beam, at 2.68 km altitude, even though the lowest possible detected plume height above Eyjafjallajökull is 2.9 km.

Figure 4 shows the availability of the echo top altitudes of the volcanic cloud for the duration of the eruption from 14 April to 23 May. In total the echo top heights were available 45 % of the time. There are four reasons for non-availability: (i) The altitude of the volcanic plume is too low to be detected by the radar (27 % of the time), (ii) the volcanic plume is obscured by precipitating clouds (11 %), (iii) the radar scan is missing (7 %) and (iv) short range doppler scans for weather monitoring were made twice per hour following 29 April and did not reach the volcano (10 %).

The figure also shows that during the best days the echo top altitudes were available over 80 % of time but at worst there was no radar detection, although other methods of monitoring confirmed a continued eruption. In all, there are 5139 distinct estimates of plume altitude for the duration of the eruption.

### 3 The web camera at Hvolsvöllur: specifications and limitations

Several web cameras were mounted with a view of the volcano. The one most useful for monitoring the plume was owned by the telecommunications company Míla, located in a mast in the village of Hvolsvöllur, 34 km from the volcano, with a clear view of the volcano and the sky above. The web camera images were saved every five seconds, with vertical resolution at the volcano of about 5 pixels per 100 m. The vertical extent of the camera frame was limited to about 5.2 km a.s.l. or roughly 3.5 km above the summit of the volcano (Fig. 5).

From the web camera images a time series was constructed consisting of hourly plume altitude estimates. Figure 6 shows the availability of the hourly estimates. The

# ESSDD

4, 1–25, 2011

## Altitude of the volcanic plume during the eruption of Eyjafjallajökull

P. Arason et al.

Title Page

Abstract

Instruments

Data Provenance & Structure

Tables

Figures

⏪

⏩

◀

▶

Back

Close

Full Screen / Esc

Printer-friendly Version

Interactive Discussion



camera afforded a clear view of the plume-top 17 % of the time, and additional 5 % of the images show the plume penetrating above the frame of the images. The view was obscured 74 % of the time, and 4 % of the images are missing. In total there are 158 hourly images where the plume-top was visible. In addition during the periods when the plume was visible the data set was extended to include altitude estimates at 5 min intervals. Thus the complete web camera data series contains 1821 altitude estimates.

In estimating the plume-top altitudes from the camera images we have assumed that the plume-top seen on the images is 34 km from the camera. During high winds this is obviously not true, and when the plume was blowing to the side, the images show that the plume-top was up to 5 km downwind of the summit. A movement 3.4 km away or towards the camera leads to 10 % over- or underestimation of the altitude. Therefore, the uncertainty of the web camera plume-top altitudes should be regarded to be on the order of 10 %.

#### 4 The time series of plume-top altitudes during the Eyjafjallajökull eruption 2010

A time series has been constructed from the radar detected echo tops. The upper panel in Fig. 7 shows the 5-min time series of all available echo top altitudes of the eruption plume. The eruption started at 01:00 UTC on 14 April and the volcanic plume was first detected by the radar at 08:50 UTC. The last radar observation of the plume was at 10:20 UTC on 21 May. The time series show that there were large variations in echo top height at any given time and semi-discrete jumps are apparent. The jumps are a consequence of the scanning strategy and increase with altitude as the vertical distance between the elevation angles increases (see also Fig. 3).

In order to get a better picture of the height variation of the plume, the lower panel in Fig. 7 shows the 6-h mean plume altitude along with standard deviations. The figure gives a clear picture of the large variations in the eruption strength. During the first few days the plume altitude varied mainly between 5 and 7 km followed by a period of

## Altitude of the volcanic plume during the eruption of Eyjafjallajökull

P. Arason et al.

Title Page

Abstract

Instruments

Data Provenance & Structure

Tables

Figures

⏪

⏩

◀

▶

Back

Close

Full Screen / Esc

Printer-friendly Version

Interactive Discussion



weaker activity on 18–24 April with plume altitude of 3–4 km. After almost a week of lower activity the eruption gained some strength on 25–29 April followed by another period with low plume height. On 3 May there was a sudden increase in the plume height with the initiation of a new phase of the eruption. During this last phase the plume rose to a maximum altitude of 7–8 km on 16 May, after which the plume decreased steadily.

In addition to the 5-min data set the data have been compiled into 1 h, 3 h, 6 h, 12 h and 24 h data sets. Each of these compiled data sets includes for each time step (i) information on the availability of radar scans, (ii) mean, minimum and maximum plume-top altitude, (iii) standard deviation of the plume-top altitude and (iv) median, lower and upper quartile of the plume-top altitude. When compiling these data sets the plume height is assumed to be 2.5 km a.s.l. when below the minimum detection level of the radar but other observations, e.g. web camera images, seismic measurements or pilot reports, confirm volcanic activity.

Figure 8 shows the time series of the plume-top altitudes constructed from the web camera data. Clearly, the reduced availability of the web camera data means that the time series is more sparse. However, the vertical resolution of the data is better up to the image ceiling, 5.2 km a.s.l.

## 5 Cross-validation

To validate the data, the radar echo top heights were compared to the web camera based time series from Hvolsvöllur.

Contrasting the availability of the radar and web camera altitude estimates we note that for the hourly values the radar gave information on the plume-top altitude 83 % of the time, i.e. 50 % are actual height estimates and for further 33 % of the hourly values the echo top altitudes are below the detection height. The hourly web camera altitude estimates, on the other hand, were only available 22 % of the time, with the plume top visible 17 % of the time and an additional 5 % of the estimates showed the plume extending above the image ceiling.

### Altitude of the volcanic plume during the eruption of Eyjafjallajökull

P. Arason et al.

Title Page

Abstract

Instruments

Data Provenance & Structure

Tables

Figures

⏪

⏩

◀

▶

Back

Close

Full Screen / Esc

Printer-friendly Version

Interactive Discussion





Figure 9 shows a comparison of all 5 min values for the radar (blue) and web camera (red). As noted above, the availability of the radar data was far better than that of the web camera data, but the vertical resolution in the web camera data is better for the height range that it covers. In many cases the radar echo top altitude is jumping between the 3.9 and 4.9 km levels (e.g. from 1–2 and 7–13 May) but the web camera time series show the plume height ranging in between these altitudes. On these days the discrete echo top levels nicely encapsulated the web camera altitudes.

To get a better understanding of the differences in height estimates between the web camera and radar it is instructive to consider each radar scanning angle separately (see Fig. 3). Table 2 shows a comparison of simultaneous measurements by radar and the web camera classified according to the radar scanning angle.

For the  $0.5^\circ$  beam, the radar altitudes are below 3.5 km. However, the web camera altitudes range from 3.4 to 4.4 km with an average altitude of 3.95 km. This difference is mainly due to the low bias caused by partial beam blockage of the  $0.5^\circ$  radar scan, as discussed in Sect. 2.1.

For the  $0.9^\circ$  beam the radar altitudes range from 3.5 to 4.4 km. At the same time the average web camera height estimate was 4.13 km with a standard deviation of 0.3 km. The average height of simultaneous radar estimates was only 0.2 km lower than the web camera estimates, which is within one standard deviation. It should be noted that there were no simultaneous cases of the radar estimating the plume height to be below 4.8 km and the web camera showing the plume extending above the image ceiling at 5.2 km.

For the  $1.3^\circ$  radar beam the table shows that while the radar values ranged from 4.5 to 5.4 km the web camera values were somewhat lower, ranging from 3.3 to 5.2 km. The average altitude estimated by the web camera, 4.65 km, is 460 m below the average of radar estimates at the same time. For this radar beam there were 299 cases when a radar altitude estimate was obtained while at the same time the web camera showed the plume penetrating above the image frame. If we assign some value over 5.2 km to the web camera data when the plume is clearly seen to penetrate above the frame, the

## Altitude of the volcanic plume during the eruption of Eyjafjallajökull

P. Arason et al.

Title Page

Abstract

Instruments

Data Provenance & Structure

Tables

Figures

⏪

⏩

◀

▶

Back

Close

Full Screen / Esc

Printer-friendly Version

Interactive Discussion



difference between the radar and web camera decreases drastically, it becomes 200 m if we use 5.3 km.

Finally, there are 10 cases where the radar estimates are above 5.4 km and the camera still shows the plume-top altitude to lie below 5.2 km. However, there were 162 cases when the plume was clearly above the image frame ceiling while at the same time, the radar gave a value above 5.4 km. The mean of the 10 cases is therefore strongly biased. Further examination of the data shows that there were 461 cases where the plume height exceeded the web camera frame (plume height was greater than 5.2 km) and simultaneous height estimates from the radar are available. For these cases, the range of plume-top altitudes estimated by radar was 4.8–8.2 km with an average of 5.55 km and standard deviation of 1.0 km. In this regard, it should be noted that there were no instances where the web camera showed the plume rising above the image frame and the radar at the same time placed the plume top within the two lowest beams (0.5° or 0.9°).

Figure 7 clearly shows the discrete levels that arise in the 5 min data due to the different scanning angles. However, the figure also shows that this discreteness is not apparent in the 6-hourly averages. As was noted in the discussion of Fig. 9 during the period 7–13 May the radar heights alternated from 3.9 to 4.9 km while the web camera ranged in between. Figure 10 shows a comparison of 6-hourly averages of simultaneous plume-top altitude estimates by the radar and web camera during this period. Six hour intervals where fewer than 10 simultaneous altitude estimates exist are omitted. The agreement between the two different estimates is excellent, and is a good argument for the validity of the radar height estimates, with the caveat that jumps between discrete radar levels will occur for 5 min data.

To summarize, the radar and the web camera height estimates compare fairly well. For the radar the biggest issue with regard to uncertainty are the discrete scanning angles and the resulting groups of echo top height levels. However within the two levels where both the radar and web camera estimates are not seriously affected by either radar beam blockage or by the image frame ceiling, the difference between simultane-

# ESSDD

4, 1–25, 2011

## Altitude of the volcanic plume during the eruption of Eyjafjallajökull

P. Arason et al.

Title Page

Abstract

Instruments

Data Provenance & Structure

Tables

Figures

⏪

⏩

◀

▶

Back

Close

Full Screen / Esc

Printer-friendly Version

Interactive Discussion



ous radar and web camera height estimates is within the 10% uncertainty previously estimated for the web camera altitudes. For 6-hourly averages the influence of the discrete levels are much reduced and the agreement between the two datasets is excellent.

## 6 Conclusions

The eruption of Eyjafjallajökull caused major disruption of air traffic in northern and western Europe as upper level winds advected fine-grained silicic ash rapidly south-eastward and later southward. During and after the eruption numerous scientific questions regarding medium-sized explosive eruptions have surfaced. This paper presents data that will be used to answer some of those questions, especially questions relating to the dispersion of the ash and volcanic aerosols, methods for tracking volcanic clouds and the interaction between the eruption plume and the atmosphere (see e.g. Carn et al., 2008; Tupper et al., 2009; Graf et al., 1999; Bursik, 2001; Prata, 2009).

The paper has described two independent time series of the altitude of the volcanic plume of the Eyjafjallajökull eruption April–May 2010 as observed with a weather radar located 155 km from the volcano and a web camera located 34 km from the volcano. The radar and camera observations were cross validated and we have discussed the inaccuracies in the data. The results show that despite inaccuracies in the radar data due to the discrete levels at which it scans, the radar is still a very useful device for monitoring the volcanic plume.

Although both time series contain vital information about the plume height and the eruption plume altitude and variations in time, the availability data shows that for monitoring purposes the radar is extremely useful. With regards to plume height the radar yielded valuable information about 80% of the time, whereas the web camera was only useful about 20% of the time.

### Altitude of the volcanic plume during the eruption of Eyjafjallajökull

P. Arason et al.

Title Page

Abstract

Instruments

Data Provenance & Structure

Tables

Figures

⏪

⏩

◀

▶

Back

Close

Full Screen / Esc

Printer-friendly Version

Interactive Discussion



Supplementary material related to this article is available online at:

<http://www.earth-syst-sci-data-discuss.net/4/1/2011/essdd-4-1-2011-supplement.zip>.

*Acknowledgements.* We would like to thank Árni Sigurðsson, Bolli Pálmason, Philippe Crochet, Sibylle von Löwis, Sigrún Karlsdóttir and Steinunn S. Jakobsdóttir for valuable discussions and assistance. Míla ehf. kindly supplied the web camera photographs for validation of the radar altitudes.

## References

Bursik, M.: Effect of wind on the rise height of volcanic plumes, *Geophys. Res. Lett.*, 28, 3621–3624, 2001. 11

Carn, S. A., Prata, A. J., and Karlsdóttir, S.: Circumpolar transport of a volcanic cloud from Hekla (Iceland), *J. Geophys. Res.*, 113, D14311, doi:10.1029/2008JD009878, 2008. 11

Crochet, P.: Enhancing radar estimates of precipitation over complex terrain using information derived from an orographic precipitation model, *J. Hydrol.*, 377, 417–433, doi:10.1016/j.jhydrol.2009.08.038, 2009. 5

Graf, H.-F., Herzog, M., Oberhuber, J. M., and Textor, C.: The effect of environmental conditions on volcanic plume rise, *J. Geophys. Res.*, 104, 24309–24320, 1999. 11

Lacasse, C., Karlsdóttir, S., Larsen, G., Soosalu, H., Rose, W. I., and Ernst, G. G. J.: Weather radar observations of the Hekla 2000 eruption cloud, Iceland, *Bull. Volcanol.*, 66, 457–473, 2004. 3

Larsen, G., Vilmundardóttir, E., and Þorkelsson, B.: Heklugosið 1991: Gjóskufallið og gjóskulagið frá fyrsta degi gossins (The Hekla eruption of 1991 – The tephra fall), *Náttúrufræðingurinn*, 61, 159–176, 1991. 3

Oddson, B.: The Grímsvötn eruption in 2004: Dispersal and total mass of tephra and comparison with plume transport models, Master's thesis, University of Iceland, 2007. 3

Petersen, G. N.: A short meteorological overview of the Eyjafjallajökull eruption 14 April–23 May 2010, *Weather*, 65, 203–207, doi:10.1002/wea.634, 2010. 2

Prata, A. J.: Satellite detection of hazardous volcanic clouds and the risk to global air traffic, *Nat. Hazards*, 51, 303–304, doi:10.1007/s11069-008-9273-z, 2009. 11

ESSDD

4, 1–25, 2011

## Altitude of the volcanic plume during the eruption of Eyjafjallajökull

P. Arason et al.

Title Page

Abstract

Instruments

Data Provenance & Structure

Tables

Figures

⏪

⏩

◀

▶

Back

Close

Full Screen / Esc

Printer-friendly Version

Interactive Discussion

Rhinehart, R. E.: Radar for Meteorologists, University of North Dakota, Grand Forks, North Dakota, 1991. 5

Tupper, A., Textor, C., Herzog, M., Graf, H.-F., and Richards, M. S.: Tall clouds from small eruptions: the sensitivity of eruption height and fine ash content to tropospheric instability, Nat. Hazards, 51, 375–401, doi:10.1007/s11069-009-9433-9, 2009. 11

Vogfjörd, K. S., Jakobsdóttir, S. S., Gudmundsson, G. B., Roberts, M. J., Ágústsson, K., Arason, P., Geirsson, H., Karlsdóttir, S., Hjaltadóttir, S., Ólafsdóttir, U., Thorbjarnardóttir, B., Skaftadóttir, T., Sturkell, E., Jónasdóttir, E. B., Hafsteinsson, G., Sveinbjörnsson, H., Stefánsson, R., and Jónsson, T. V.: Forecasting and monitoring a subglacial eruption in Iceland, EOS Trans. AGU., 86, 245–248, doi:10.1029/2005EO260001, 2005. 3

## ESSDD

4, 1–25, 2011

### Altitude of the volcanic plume during the eruption of Eyjafjallajökull

P. Arason et al.

Title Page

Abstract

Instruments

Data Provenance & Structure

Tables

Figures

⏪

⏩

◀

▶

Back

Close

Full Screen / Esc

Printer-friendly Version

Interactive Discussion



## Altitude of the volcanic plume during the eruption of Eyjafjallajökull

P. Arason et al.

Title Page

Abstract

Instruments

Data Provenance & Structure

Tables

Figures

⏪

⏩

◀

▶

Back

Close

Full Screen / Esc

Printer-friendly Version

Interactive Discussion



**Table 1.** Specifications of the weather radar system in Keflavík, southwest Iceland.

Type	C-band Ericsson radar system (5.6 GHz)
Operational since	January 1991
Doppler since	April 2010
Location	64°01′35″ N, 22°38′09″ W
Height of antenna	47 m a.s.l.
Peak transmitted power	245.2 kW
Pulse duration	2.15 $\mu$ s
Wavelength	5.4 cm
Pulse repetition rate	250 $\pm$ 2 Hz
Maximum range	480 km
Actual gain of antenna	44.9 dBZ
Half-power beam width	0.9°
Elevation angles reflectivity scans	0.5°, 0.9°, 1.3°, 2.4°, 3.5°, 4.5°, 6.0°, 8.0°, 10.0°, 15.0°, 25.0° and 40.0°
Altitude of 4 lowest level beam midpoints over the volcano	2.8, 3.9, 4.9 and 7.9 km a.s.l.
Elevation angles doppler scans	0.5°, 1.3°, 2.4°, 5.0°, 7.0°, 10.0°, 15.0°, 20.0° and 30.0°
Reflectivity threshold (echo top)	–20 dBZ
Data managing software	Rainbow <sup>®</sup> 5

## Altitude of the volcanic plume during the eruption of Eyjafjallajökull

P. Arason et al.

Title Page

Abstract

Instruments

Data Provenance & Structure

Tables

Figures

⏪

⏩

◀

▶

Back

Close

Full Screen / Esc

Printer-friendly Version

Interactive Discussion



**Table 2.** Comparison of simultaneous measurements by radar and web camera. Separate lines show the radar scanning angle and height range classes as estimated by radar, while the columns show the range, average and standard deviation of web camera estimates made at the same time. The last column shows the number of height estimates used to calculate the average and standard deviation. All height values are in kilometers above sea level.

Radar scanning elevation angle	Radar height range	Web camera			
		Range	mean	sd	N
0.5°	<3.5	3.4–4.4	3.95	0.24	48
0.9°	3.5–4.4	2.3–5.1	4.13	0.31	268
1.3°	4.5–5.4	3.3–5.2	4.65	0.33	520
2.4°	>5.4	4.2–4.9	4.57	0.29	10

## Altitude of the volcanic plume during the eruption of Eyjafjallajökull

P. Arason et al.

Title Page

Abstract

Instruments

Data Provenance & Structure

Tables

Figures

⏪

⏩

◀

▶

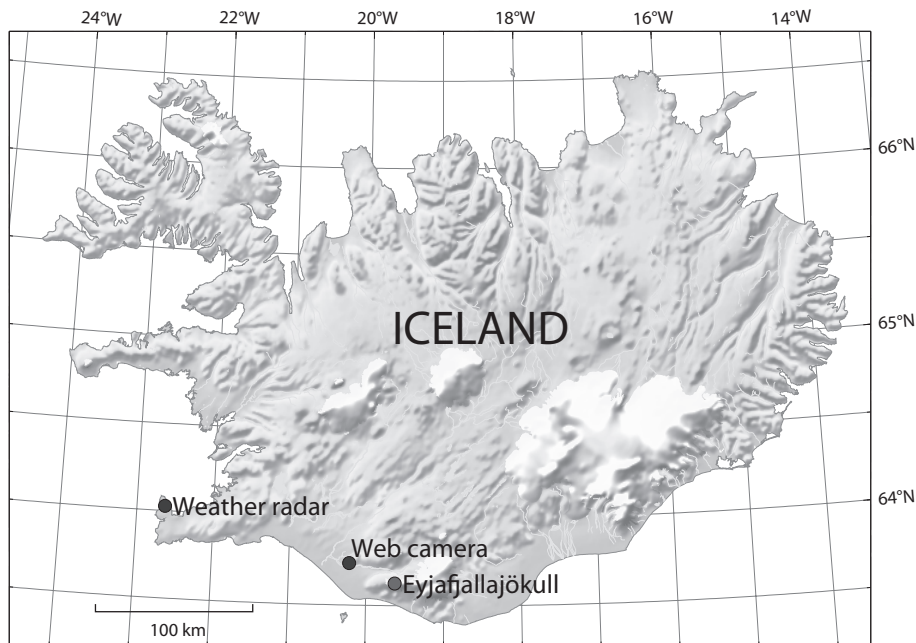
Back

Close

Full Screen / Esc

Printer-friendly Version

Interactive Discussion



**Fig. 1.** A map of Iceland and the location of the weather radar at Keflavík airport, the web camera in the village of Hvolsvöllur and the Eyjafjallajökull volcano in South Iceland. The radar is about 155 km from the volcano and in between there is a mountain range that obstructs the view of the plume when below 2.9 km a.s.l.



Altitude of the volcanic plume during the eruption of Eyjafjallajökull

P. Arason et al.

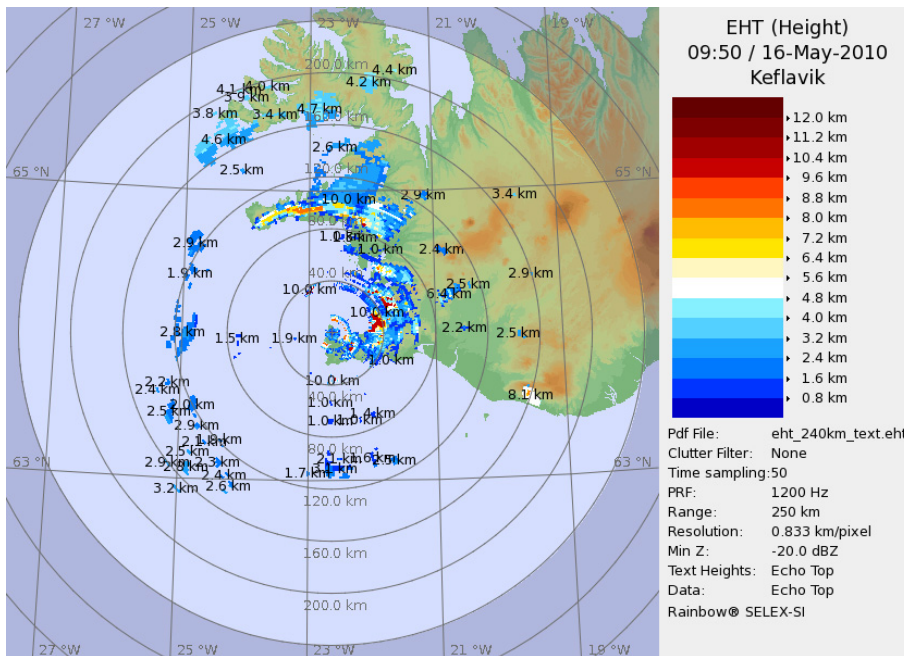


Fig. 2. An echo top image of the weather radar scan at 09:50 UTC, 16 May 2010.

Title Page

Abstract Instruments

Data Provenance & Structure

Tables Figures

◀ ▶

◀ ▶

Back Close

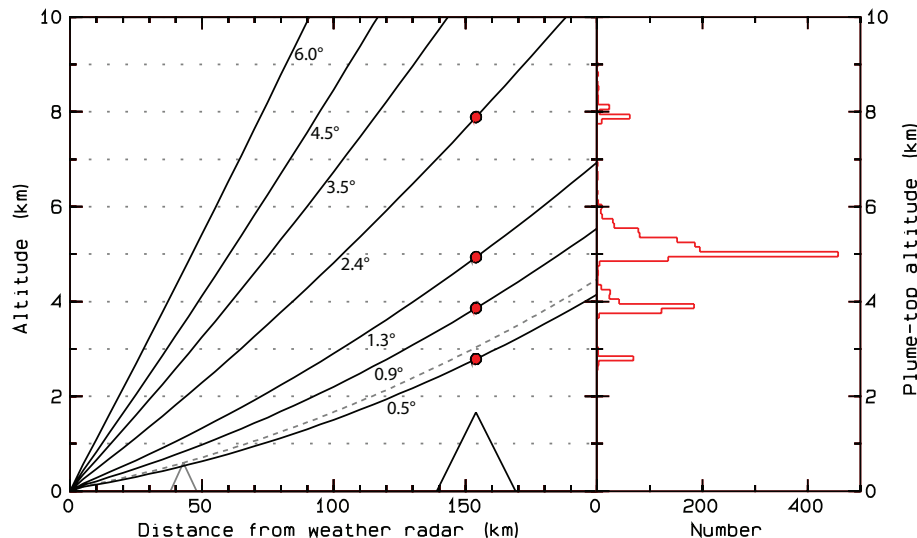
Full Screen / Esc

Printer-friendly Version

Interactive Discussion

Altitude of the volcanic plume during the eruption of Eyjafjallajökull

P. Arason et al.



**Fig. 3.** Left: A range-height diagram of the altitude (km a.s.l.) as a function of distance from the Keflavík radar (km) for the lowest elevation angles (0.5°–6.0°) of the scanning strategy during the eruption, calculated using Eq. (1). The location of Eyjafjallajökull is marked with a triangle and the lowest elevation angle of the obstacles due to Brennisteinsfjöll mountain range with a dashed line. Right: A histogram of plume-top altitudes estimated by the radar.

Title Page

Abstract

Instruments

Data Provenance & Structure

Tables

Figures

⏪

⏩

◀

▶

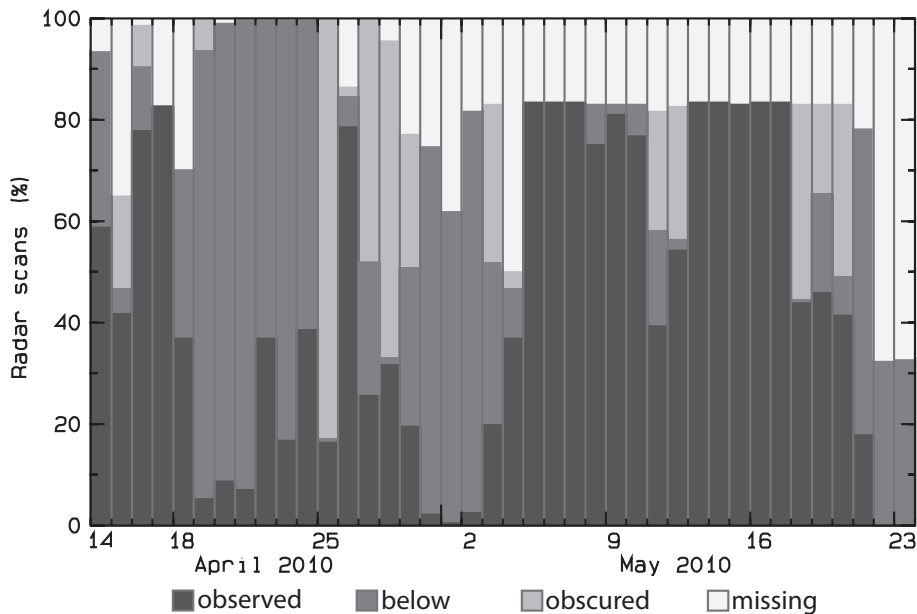
Back

Close

Full Screen / Esc

Printer-friendly Version

Interactive Discussion



**Fig. 4.** Availability of the 5-min radar data for each day of the eruption, 14 April to 23 May 2010. The figure shows the fraction of scans where (a) Echo top of the plume was observed by the radar (darkest shading), (b) plume was below the minimum detection height, (c) the plume was obscured by precipitating clouds and (d) the radar scans were missing (white). Note that after 29 April two 120 km doppler scans per hour replaced reflectivity scans leading to an increase in missing scans.

## Altitude of the volcanic plume during the eruption of Eyjafjallajökull

P. Arason et al.

[Title Page](#)

[Abstract](#)

[Instruments](#)

[Data Provenance & Structure](#)

[Tables](#)

[Figures](#)

[⏪](#)

[⏩](#)

[⏴](#)

[⏵](#)

[Back](#)

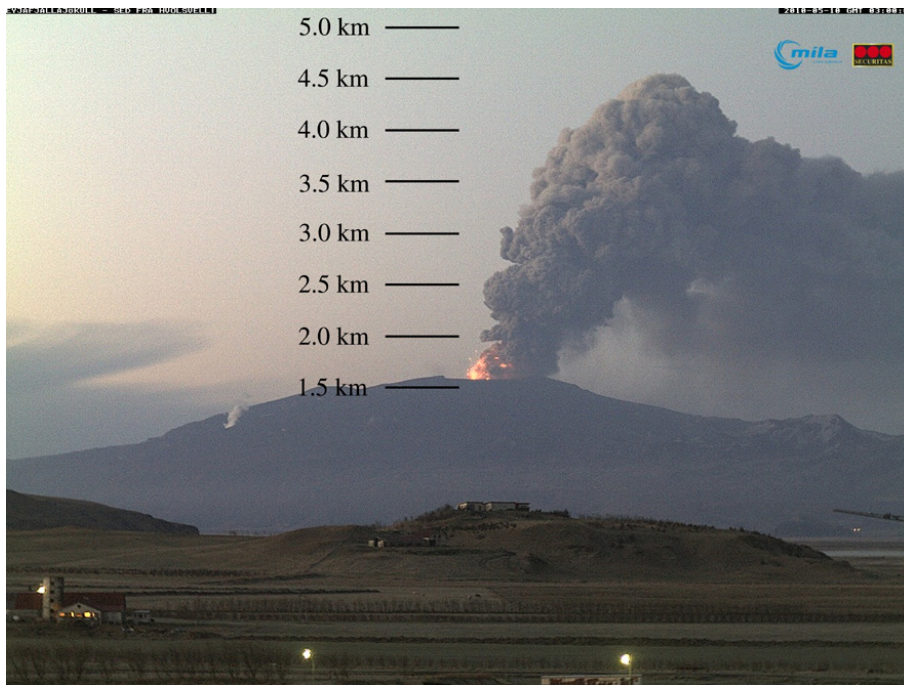
[Close](#)

[Full Screen / Esc](#)

[Printer-friendly Version](#)

[Interactive Discussion](#)





**Fig. 5.** Web camera image acquired on 10 May at 03:00 UTC. The figure also shows the altitude levels above the volcano in km a.s.l.

# ESSDD

4, 1–25, 2011

## Altitude of the volcanic plume during the eruption of Eyjafjallajökull

P. Arason et al.

Title Page

Abstract

Instruments

Data Provenance & Structure

Tables

Figures

⏪

⏩

◀

▶

Back

Close

Full Screen / Esc

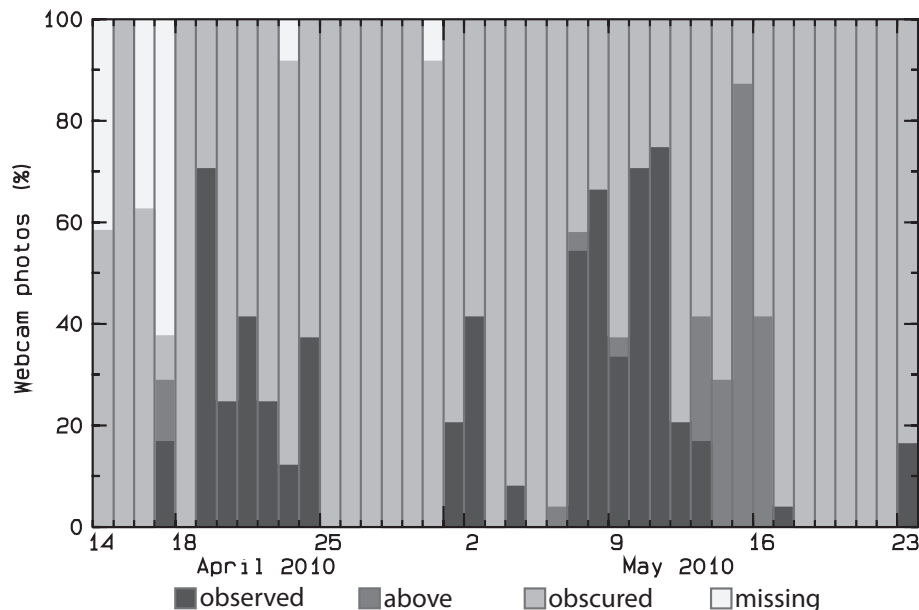
Printer-friendly Version

Interactive Discussion



## Altitude of the volcanic plume during the eruption of Eyjafjallajökull

P. Arason et al.



**Fig. 6.** Availability of the hourly web camera data for each day of the eruption, 14 April to 23 May 2010. The figure shows the fraction of web camera photos where (a) the plume height was observed by the camera (darkest shading), (b) the plume was visible but extended above the image frame, (c) visibility was poor and the plume was obscured and (d) the images are missing.

Title Page

Abstract

Instruments

Data Provenance & Structure

Tables

Figures

⏪

⏩

◀

▶

Back

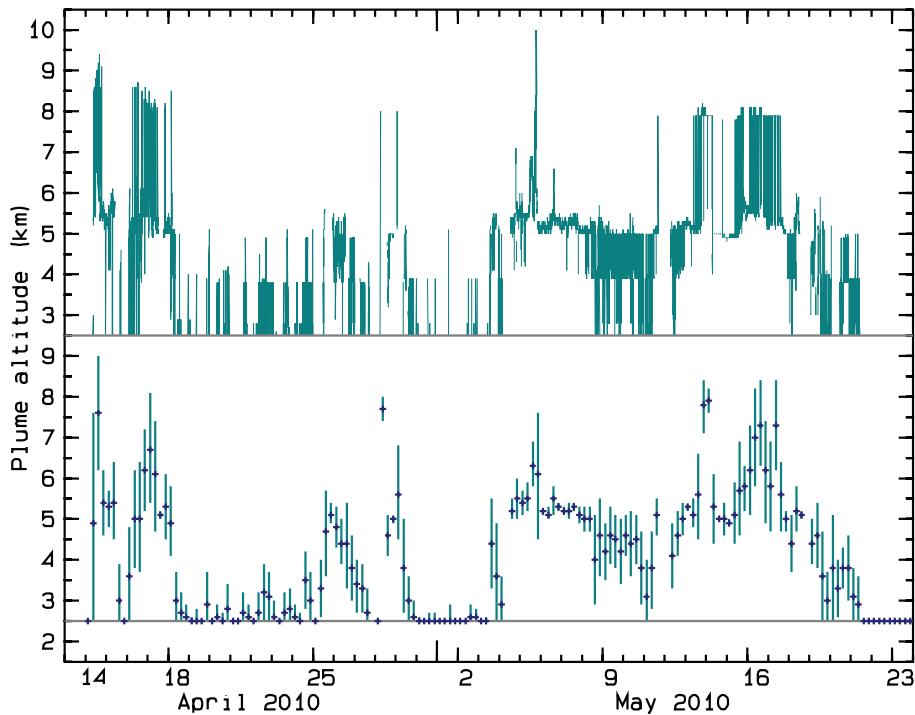
Close

Full Screen / Esc

Printer-friendly Version

Interactive Discussion





**Fig. 7.** Upper panel: The 5-min time series of the echo top radar data of the eruption plume altitude (km a.s.l.). Lower panel: A 6-h average of the echo top height of the eruption plume (km a.s.l.). The bars represent one standard deviation.

## Altitude of the volcanic plume during the eruption of Eyjafjallajökull

P. Arason et al.

Title Page

Abstract

Instruments

Data Provenance & Structure

Tables

Figures

◀

▶

◀

▶

Back

Close

Full Screen / Esc

Printer-friendly Version

Interactive Discussion

## Altitude of the volcanic plume during the eruption of Eyjafjallajökull

P. Arason et al.

Title Page

Abstract

Instruments

Data Provenance & Structure

Tables

Figures

◀

▶

◀

▶

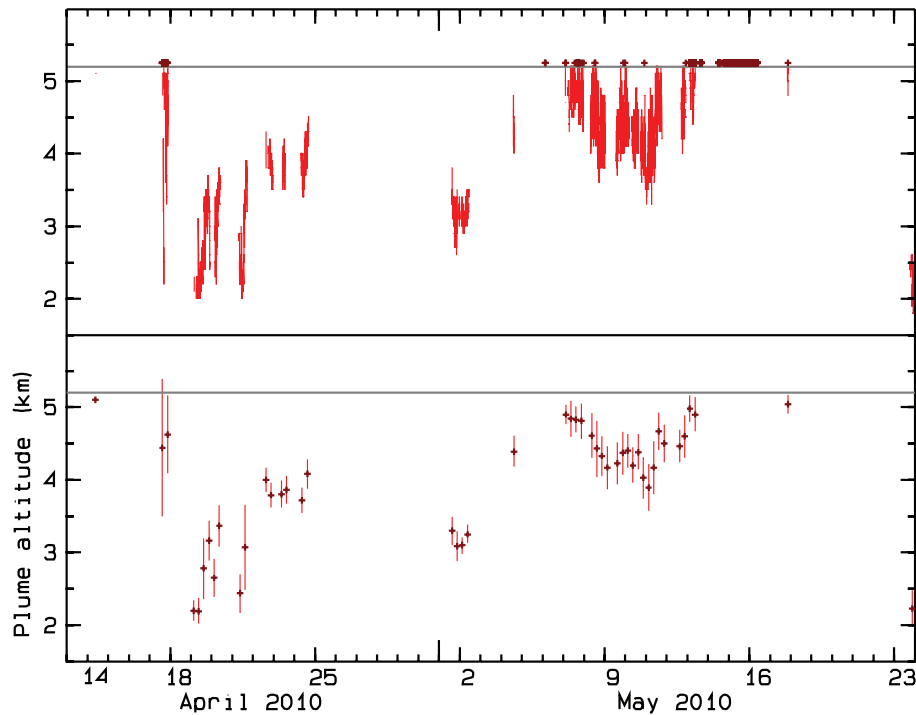
Back

Close

Full Screen / Esc

Printer-friendly Version

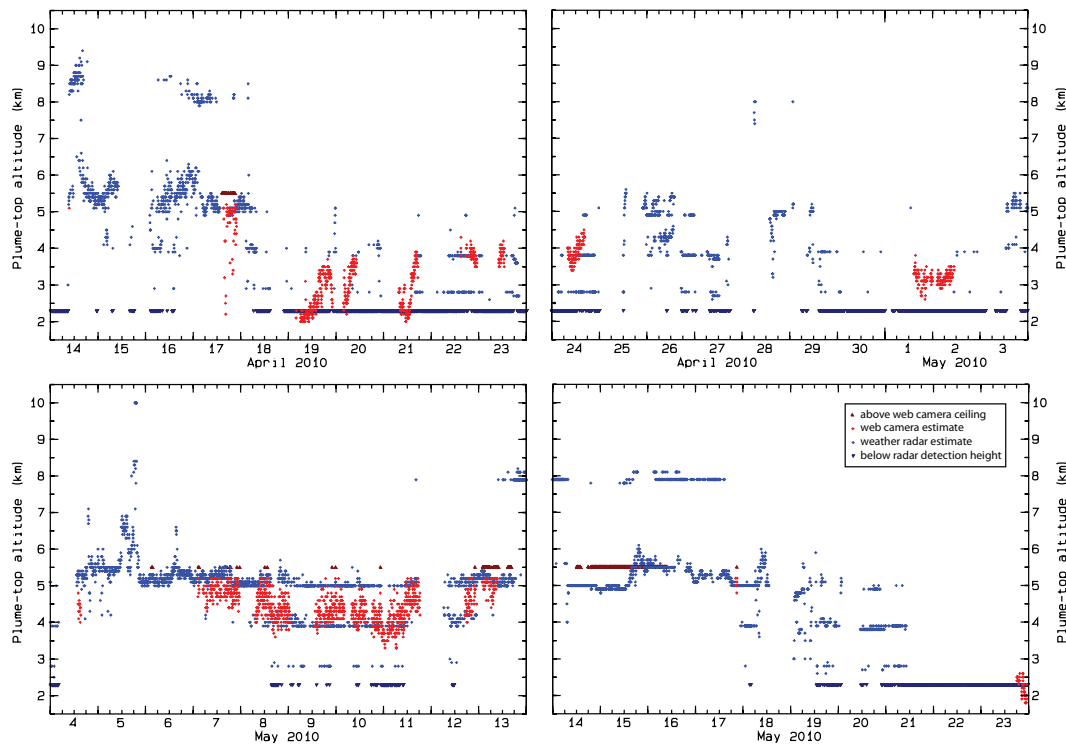
Interactive Discussion



**Fig. 8.** As in Fig. 7 but for the web camera data. The image frame ceiling at 5.2 km a.s.l. is shown.

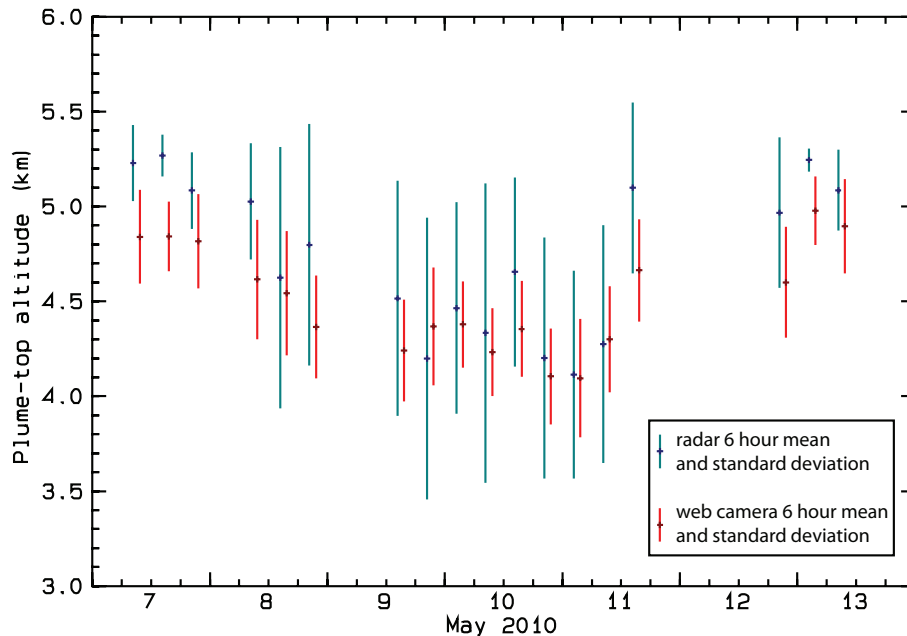
## Altitude of the volcanic plume during the eruption of Eyjafjallajökull

P. Arason et al.



**Fig. 9.** The time series of the 5-min values of the weather radar and web camera altitude estimates of the eruption plume (km a.s.l.). In some cases the plume was below the minimum radar detection height, and sometimes it extended above the web camera frame ceiling.





**Fig. 10.** A comparison of altitude estimates from synchronous radar and web camera data, 7–13 May. The graph excludes cases when there were fewer than 10 synchronous observations during 6 h.

## Altitude of the volcanic plume during the eruption of Eyjafjallajökull

P. Arason et al.

[Title Page](#)

[Abstract](#)

[Instruments](#)

[Data Provenance & Structure](#)

[Tables](#)

[Figures](#)

[⏪](#)

[⏩](#)

[⏴](#)

[⏵](#)

[Back](#)

[Close](#)

[Full Screen / Esc](#)

[Printer-friendly Version](#)

[Interactive Discussion](#)