



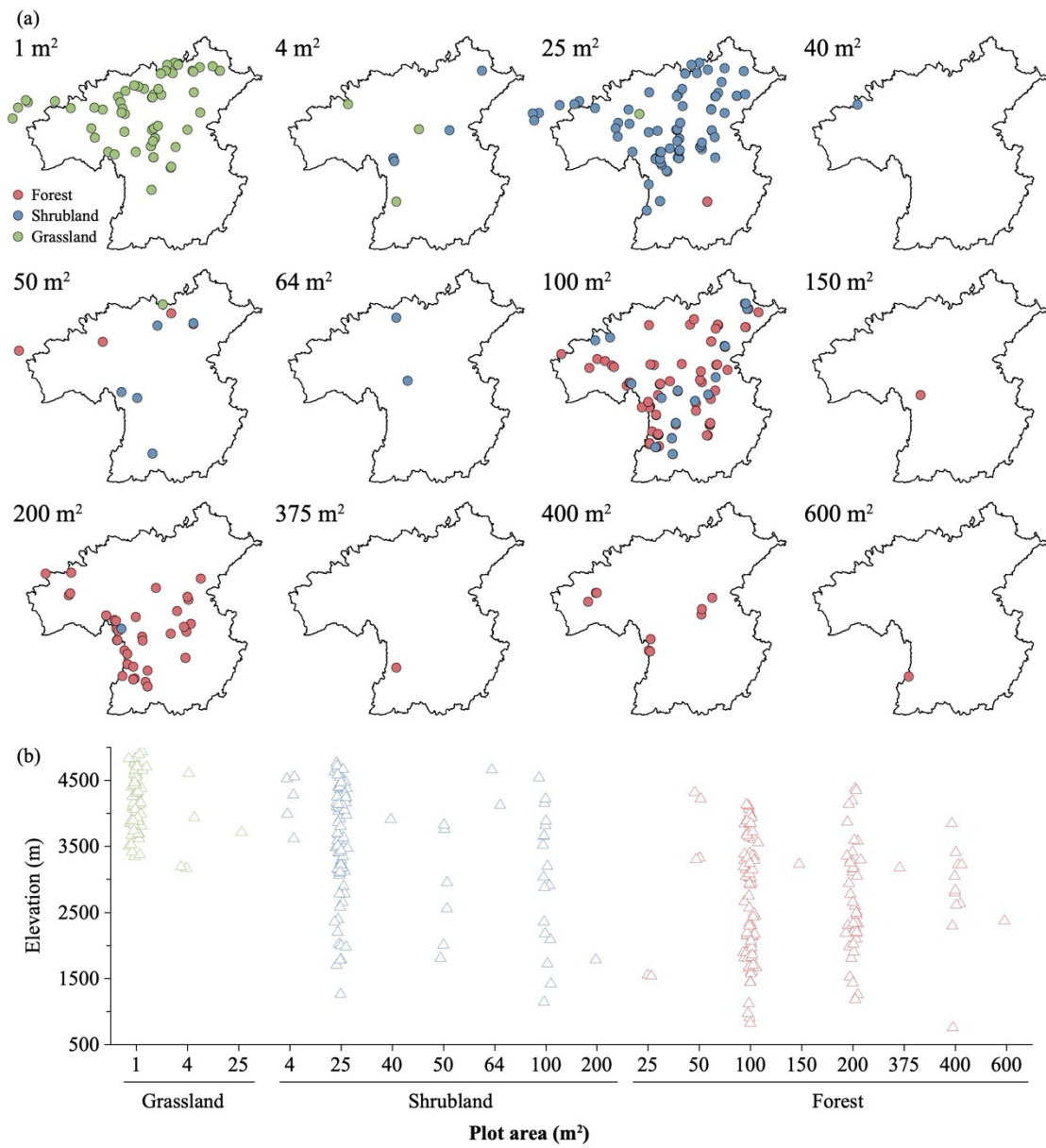
Supplement of

HDM-Plot: a plot dataset of plant communities across three-dimensional zonal vegetation in the Hengduan Mountains and adjacent regions, southwestern China

Yili Jin et al.

Correspondence to: Xingxing Mao (xyz1314@zjnu.edu.cn) and Jian Ni (nijian@zjnu.edu.cn)

The copyright of individual parts of the supplement might differ from the article licence.



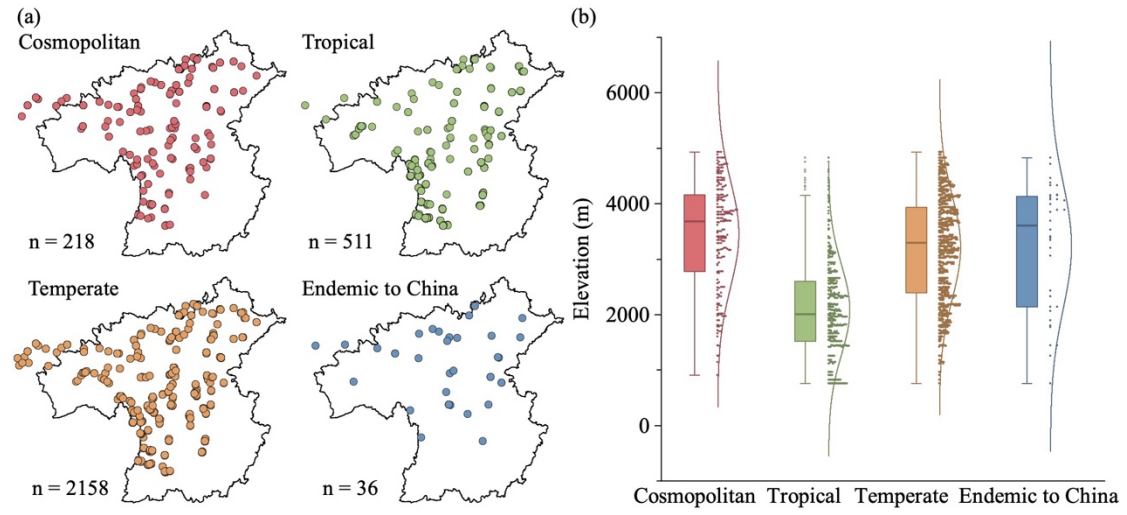


Figure S2. Spatial (a) and elevational (b) distributions of genus-level areal-type groups based on plot–genus occurrences. n denotes the total number of plot–genus occurrence.

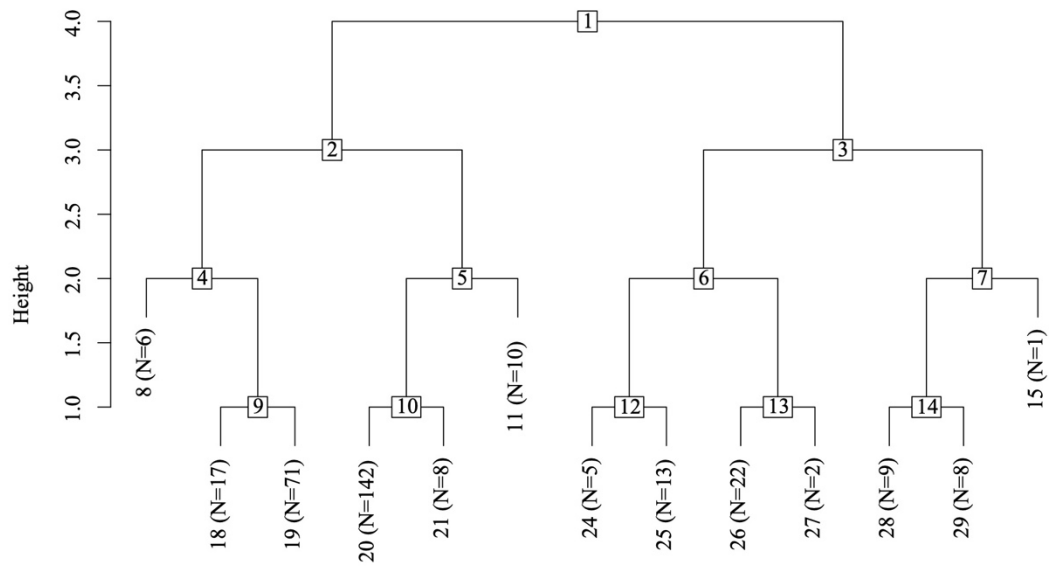


Figure S3. Two-way indicator species analysis of vegetation plots in the HDM-Plot dataset.

Table S1 Relative area of vegetation regionalization units and mapped vegetation types in the HDM-Plot study region

Vegetation unit	Area (km ²)	Relative area (%)
Vegetation regionalization		
I	632,189	86.7
II	62,040	8.5
III	34,248	4.7
Vegetation types		
TRF	6,469	0.9
DHVSG	91,381	12.5
SEBF	176,385	24.2
SMNBF	5,173	0.7
TDBFS	10,284	1.4
SANF	116,924	16.0
SAS	169,306	23.2
TM	14,654	2.0
AM	96,771	13.3
AV	41,378	5.7

Table S3 Floristic areal-types at family and genus levels in the HDM-Plot dataset.

Areal-types	Family level (percentage, %)		Genus level (percentage, %)	
	No. of families	No. of species	No. of genera	No. of species
1	30.8	48.6	6.6	8.6
2	24.8	12.1	11.6	9.6
3	8.5	4.3	2.9	3.1
4	2.6	0.4	5.3	2.5
5	1.7	0.3	2.9	1.6
6	/	/	2.6	1.2
7	1.7	1.2	10.0	5.3
8	18.8	29.4	23.2	47.2
9	5.1	2.5	7.1	5.1
10	0.9	0.1	6.3	3.8
11	/	/	1.8	1.8
12	/	/	0.8	0.4
13	/	/	0.8	0.4
14	5.1	1.2	14.0	7.9
15	/	/	4.0	1.3
Cosmopolitan	30.8	48.6	6.6	8.6
Tropical	39.3	18.3	35.4	23.3
Temperate	29.9	33.1	54.1	66.7
Endemic to China	/	/	4.0	1.3

Table S4 Vegetation classification of plant communities in the HDM-Plot dataset

Group	Formation	Alliance group	No of Plot	
Forest	DNF	<i>Larix</i>	4	
	DENF	<i>Larix + Abies</i>	1	
	ENF	<i>Abies</i>	12	
		<i>Cunninghamia</i>	1	
		<i>Juniperus</i>	3	
		<i>Picea</i>	8	
		<i>Picea + Juniperus</i>	1	
		<i>Pinus</i>	21	
		<i>Tsuga</i>	3	
		<i>Tsuga + Abies</i>	1	
		NBF	<i>Abies + Quercus</i>	3
			<i>Abies + Rhododendron</i>	1
			<i>Abies + Sorbus</i>	1
			<i>Acer + Cephalotaxus</i>	1
			<i>Juniperus + Salix</i>	1
			<i>Picea + Betula</i>	1
			<i>Picea + Quercus</i>	1
			<i>Pinus + Alnus</i>	3
			<i>Pinus + Castanopsis</i>	1
			<i>Pinus + Lithocarpus</i>	2
			<i>Pinus + Populus</i>	1
	<i>Pinus + Quercus</i>		2	
	<i>Taxus + Acer</i>	1		
	<i>Tsuga + Lithocarpus</i>	1		
	DBF	<i>Alnus</i>	6	
		<i>Alnus + Quercus</i>	1	
		<i>Betula</i>	5	

	<i>Dalbergia</i>	1
	<i>Populus</i>	3
	<i>Populus + Litsea + Viburnum</i>	1
	<i>Prunus</i>	2
	<i>Pyrus</i>	1
	<i>Quercus</i>	3
	<i>Salix</i>	2
	<i>Tilia + Cornus + Corylus</i>	1
	<i>Toxicodendron + Quercus</i>	1
EDBF	<i>Alnus + Castanopsis</i>	1
	<i>Alnus + Saurauia</i>	1
	<i>Alnus + Ternstroemia</i>	1
	<i>Betula + Quercus</i>	1
	<i>Castanopsis + Litsea</i>	1
	<i>Castanopsis + Quercus</i>	1
	<i>Pistacia + Dalbergia</i>	1
	<i>Quercus + Albizia</i>	1
	<i>Quercus + Corylopsis</i>	1
	<i>Quercus + Pistacia</i>	1
	<i>Salix + Quercus</i>	1
EBF	<i>Acacia</i>	1
	<i>Castanopsis</i>	1
	<i>Exbucklandia + Schima</i>	1
	<i>Lithocarpus</i>	1
	<i>Lithocarpus + Quercus + Symplocos</i>	1
	<i>Mallotus + Ficus</i>	1
	<i>Mallotus + Machilus</i>	1
	<i>Morella</i>	1
	<i>Pistacia</i>	2

		<i>Quercus</i>	12
		<i>Quercus + Ilex</i>	1
		<i>Sarcosperma</i>	1
		<i>Saurauia</i>	1
		<i>Schima</i>	1
	RF	<i>Aidia + Oreocnide</i>	1
		<i>Altingia</i>	1
		<i>Castanopsis + Altingia</i>	1
Shrubland	ENS	<i>Juniperus</i>	10
	NBS	<i>Juniperus + Ribes + Spiraea</i>	1
		<i>Salix + Juniperus</i>	1
		<i>Sibiraea + Juniperus + Caragana</i>	1
	DBS	<i>Abelia + Berberis + Rosa + Cotinus</i>	1
		<i>Ajania</i>	1
		<i>Artemisia</i>	1
		<i>Berberis</i>	6
		<i>Berberis + Cotoneaster</i>	1
		<i>Berberis + Lonicera</i>	1
		<i>Caryopteris</i>	2
		<i>Corylus</i>	1
		<i>Cotoneaster - Artemisia</i>	1
		<i>Elsholtzia + Rubus + Hypericum + Viburnum</i>	1
		<i>Excoecaria</i>	1
		<i>Lonicera + Cotoneaster</i>	1
		<i>Prunus + Zanthoxylum + Isodon</i>	1
		<i>Rhamnus</i>	2
		<i>Rosa</i>	2
		<i>Rosa + Berberis + Isodon</i>	1
		<i>Rosa + Cotoneaster + Berberis</i>	1

	<i>Salix</i>	7
	<i>Salix + Dasiphora</i>	1
	<i>Sibiraea</i>	2
	<i>Sibiraea + Salix</i>	1
	<i>Sophora</i>	1
	<i>Sophora + Bauhinia</i>	1
	<i>Sophora + Leptodermis</i>	1
	<i>Spiraea</i>	1
	<i>Vitex</i>	1
EDBS	<i>Ajania + Daphne</i>	1
	<i>Campylotropis + Daphne</i>	1
	<i>Dasiphora + Rhododendron</i>	1
	<i>Flueggea + Clematis</i>	1
	<i>Isodon + Rosa</i>	1
	<i>Itea + Viburnum + Bauhinia</i>	1
	<i>Prinsepia + Rosa</i>	1
	<i>Quercus + Olea + Pistacia + Excoecaria</i>	1
	<i>Rhododendron + Cotoneaster</i>	1
	<i>Rhododendron + Salix</i>	1
	<i>Rhododendron + Sorbus</i>	1
	<i>Rosa + Caryopteris - Artemisia</i>	1
	<i>Zanthoxylum + Chrysojasminum</i>	1
	<i>Zanthoxylum + Rhamnus</i>	1
EBS	<i>Daphne + Quercus</i>	1
	<i>Dodonaea</i>	1
	<i>Gaultheria</i>	1
	<i>Lithocarpus + Castanopsis</i>	1
	<i>Osteomeles + Fargesia</i>	1
	<i>Pistacia</i>	1

		<i>Quercus</i>	12
		<i>Rhododendron</i>	22
	BS	<i>Fargesia</i>	2
Grassland	TG	<i>Carex</i>	1
		<i>Carex + Kobresia</i>	2
		<i>Festuca</i>	1
		<i>Festuca + Carex</i>	1
		<i>Festuca+ Kobresia</i>	1
		<i>Kobresia</i>	25
		<i>Kobresia+ Argentina</i>	1
		<i>Kobresia + Potentilla</i>	1
		<i>Poa</i>	1
		<i>Poa + Bistorta</i>	1
	RG	<i>Carex</i>	5
		<i>Carex + Kobresia</i>	2
		<i>Carex + Kobresia + Blysmus</i>	1
		<i>Carex + Potentilla</i>	1
		<i>Carex + Stipa</i>	1
		<i>Trichophorum</i>	1
	FG	<i>Anaphalis</i>	1
		<i>Anaphalis + Argentina</i>	1
		<i>Androsace</i>	1
		<i>Argentina</i>	5
		<i>Artemisia</i>	1
		<i>Bistorta</i>	1
		<i>Bistorta + Trollius</i>	1
		<i>Eremogone</i>	1
		<i>Salix - Anemone</i>	1
		<i>Sibbaldia</i>	1

DNF, deciduous needleleaf forest; DENF, mixed deciduous and evergreen needleleaf forest; ENF, evergreen needleleaf forest; NBF, mixed needleleaf and broadleaf forest; DBF, deciduous broadleaf forest; EDBF, mixed evergreen and deciduous broadleaf forest; EBF, evergreen broadleaf forest; RF, rainforest; ENS, evergreen needleleaf shrubland; NBS, needleleaf and broadleaf shrubland; DBS, deciduous broadleaf shrubland; EDBS, evergreen and deciduous broadleaf shrubland; EBS, evergreen broadleaf shrubland; BS, bamboo shrubland; TG, tussock grassland; RG, rhizome grassland; FG, forb grassland; and SSG, semi-shrubby grassland.