



Supplement of

TPLake-MED: a monthly extent dataset for lakes on the Tibetan Plateau

Siyu Zhao et al.

Correspondence to: Xiang Zhao (zhaoxiang@bnu.edu.cn)

The copyright of individual parts of the supplement might differ from the article licence.

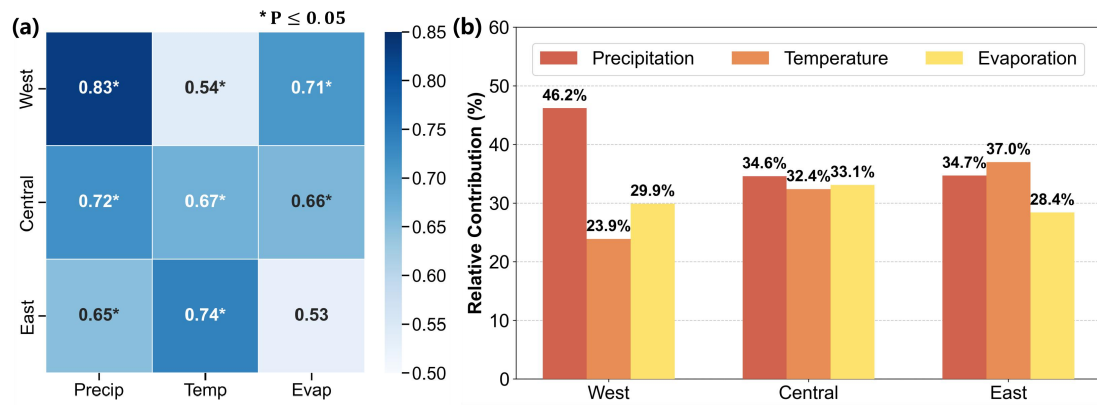


Figure S1: Driving mechanisms of lake area variations across the longitudinal gradient of the Tibetan Plateau. (a) Heatmap of Pearson correlation coefficients (r) between monthly lake area and key climate drivers. To account for catchment concentration times, a one month lag was applied to precipitation and temperature, while potential evaporation was considered concurrently. (b) Relative contributions (%) of the three climate drivers to lake area variations, derived from absolute standardized coefficients of multiple linear regression models.