



*Supplement of*

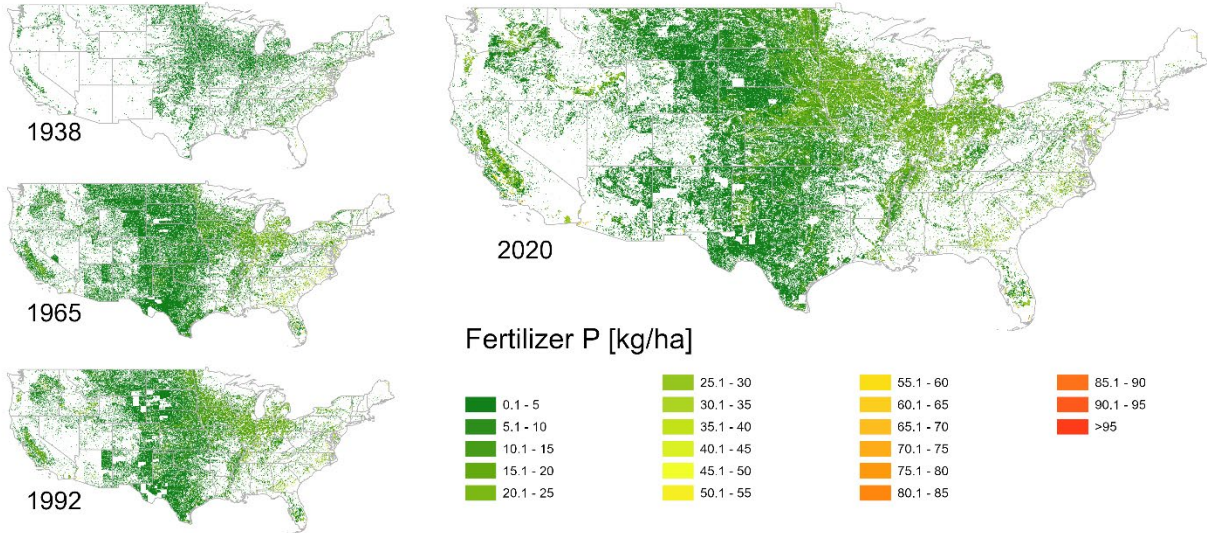
**Development of historical maps of land use-land cover, crop type, nutrients, and irrigation across CONUS (1938–2020) at different spatial resolutions**

**Eric G. Booth and Christopher J. Kucharik**

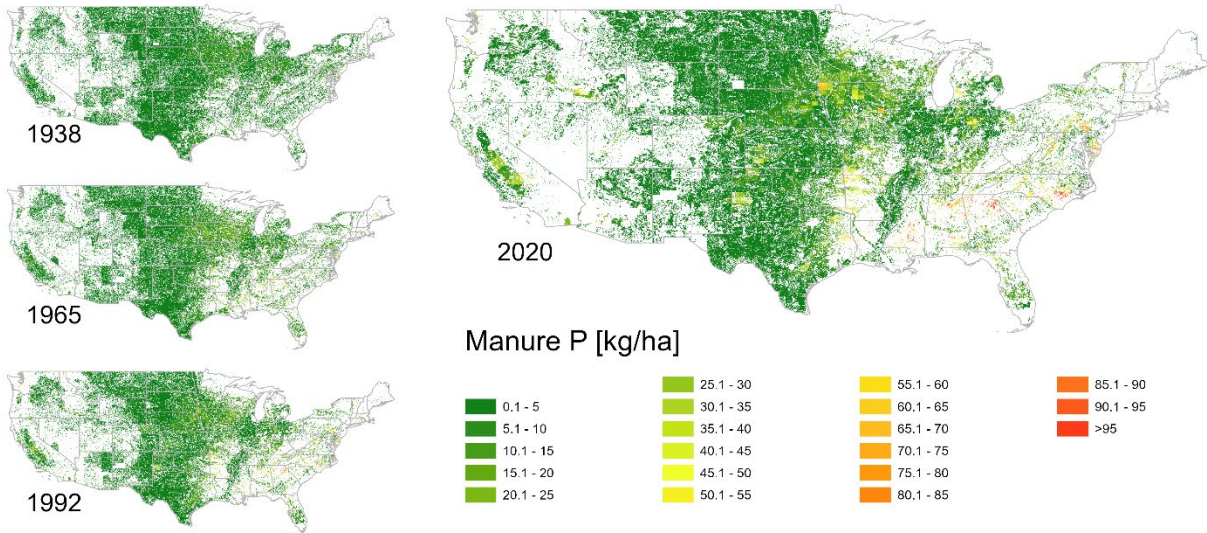
*Correspondence to:* Eric G. Booth ([egbooth@wisc.edu](mailto:egbooth@wisc.edu))

The copyright of individual parts of the supplement might differ from the article licence.

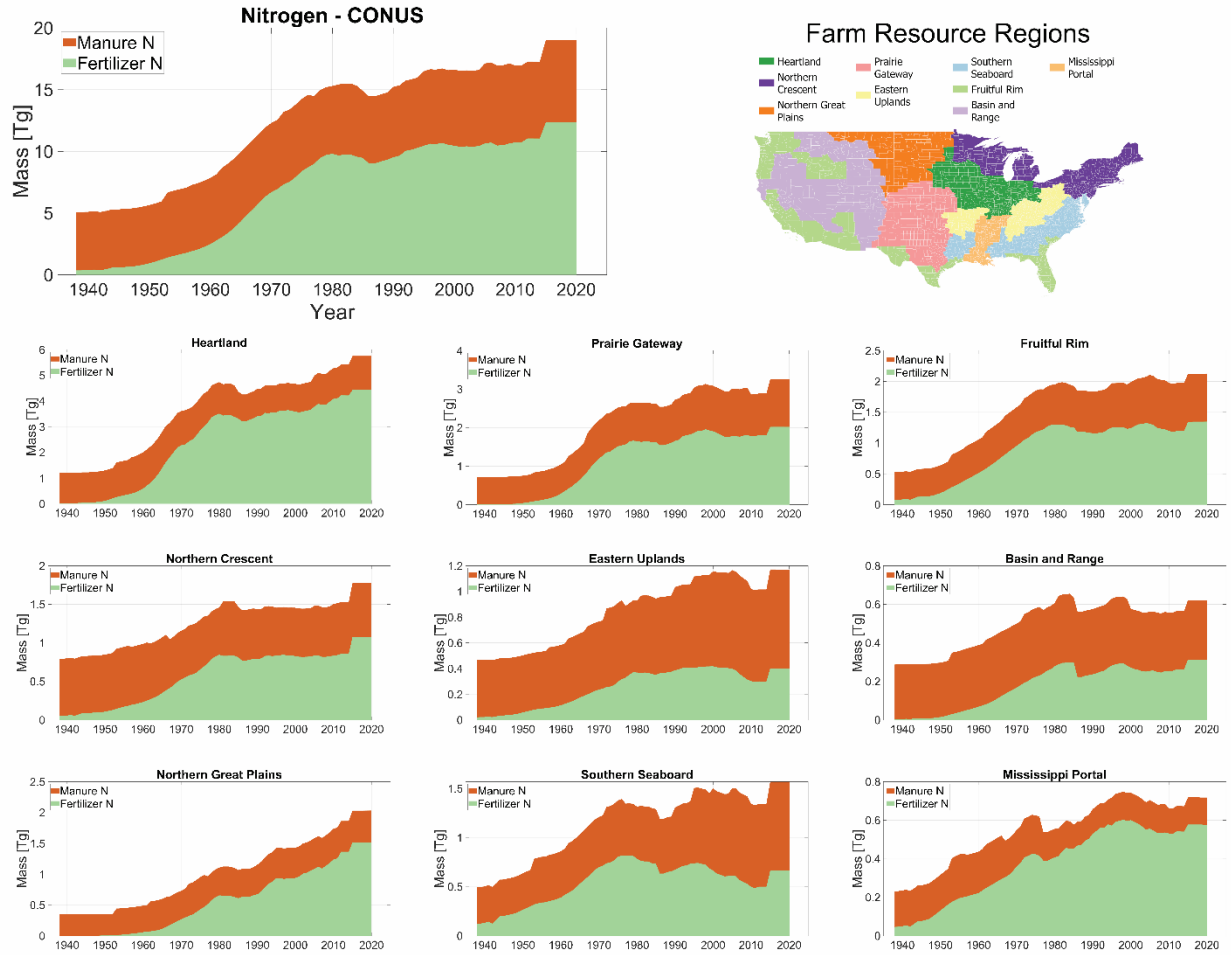
**Supplement.**



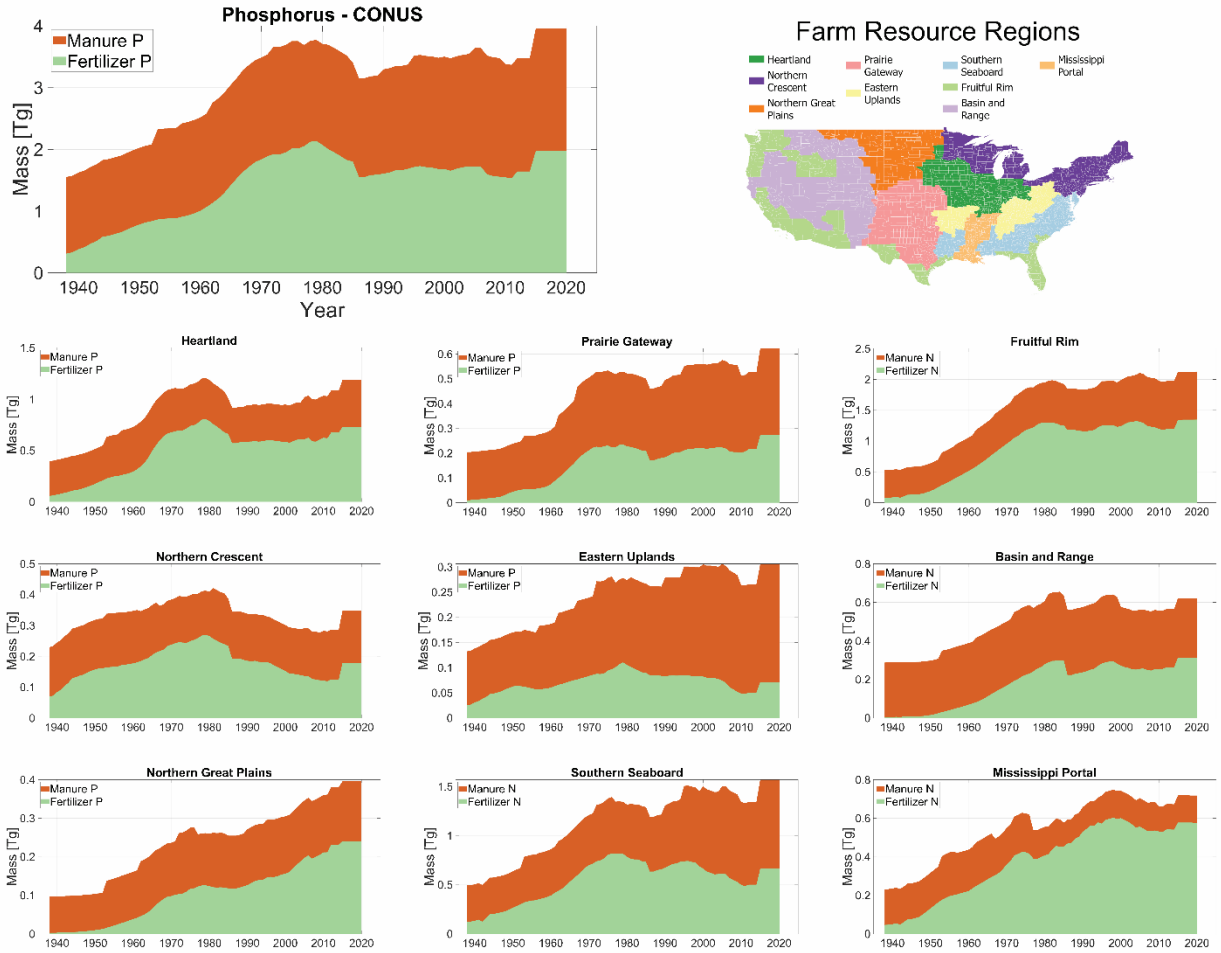
**Figure S1: Fertilizer P mass at 48 arc-seconds resolution for 1938, 1965, 1992, and 2020 estimated by this study (HLNID).**



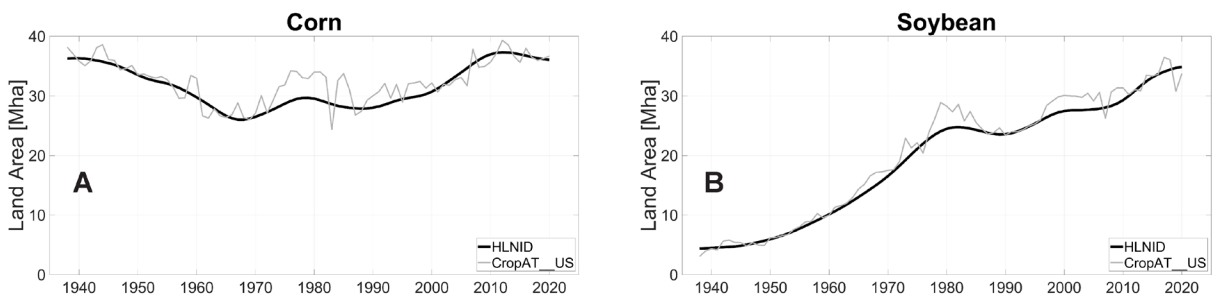
**Figure S2: Manure P mass at 48 arc-seconds resolution for 1938, 1965, 1992, and 2020 estimated by this study (HLNID).**



**Figure S3: Change in CONUS nitrogen masses (manure and fertilizer) from 1938-2020 and for the 9 Farm Resource Regions.**



**Figure S4: Change in CONUS phosphorus masses (manure and fertilizer) from 1938-2020 and for the 9 Farm Resource Regions.**



**Figure S5: Comparison of corn and soybean area between HLNID (this study) and CropAT\_US (Ye et al. 2024).**