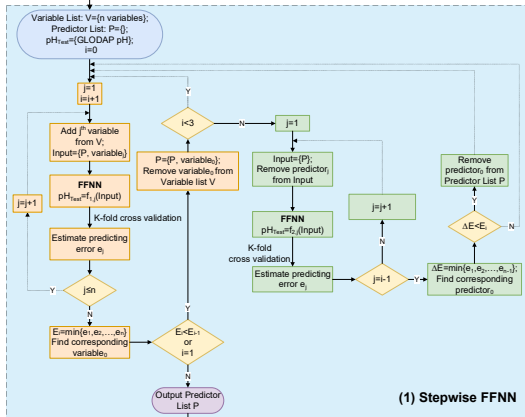


**GLODAP pH measurements in mixed layer**

**Collected Environmental Variables**

**GLODAP pH measurements in intermediate layer**

Remove remote sensing products



**pH Predictors**

**(2) FFNN**  
 $\text{pH} = f_1(\text{Predictor}_1, \text{Predictor}_2, \dots)$

**Predicted pH in mixed layer**  
(0 m – mixed layer depth)

**pH product**  
(0-2000 m)

**(1) Stepwise FFNN**

**pH Predictors**

**(2) FFNN**  
 $\text{pH} = f_2(\text{Predictor}_1, \text{Predictor}_2, \dots)$

**Predicted pH in intermediate layer**  
(mixed layer depth – 2000 m)