



Supplement of

CHN-CH₄: a gridded (0.1° × 0.1°) anthropogenic methane emission inventory of China from 1990 to 2020

Fengxiang Guo et al.

Correspondence to: Fan Dai (fandai@hku.hk) and Yuyu Zhou (yuyuzhou@hku.hk)

The copyright of individual parts of the supplement might differ from the article licence.

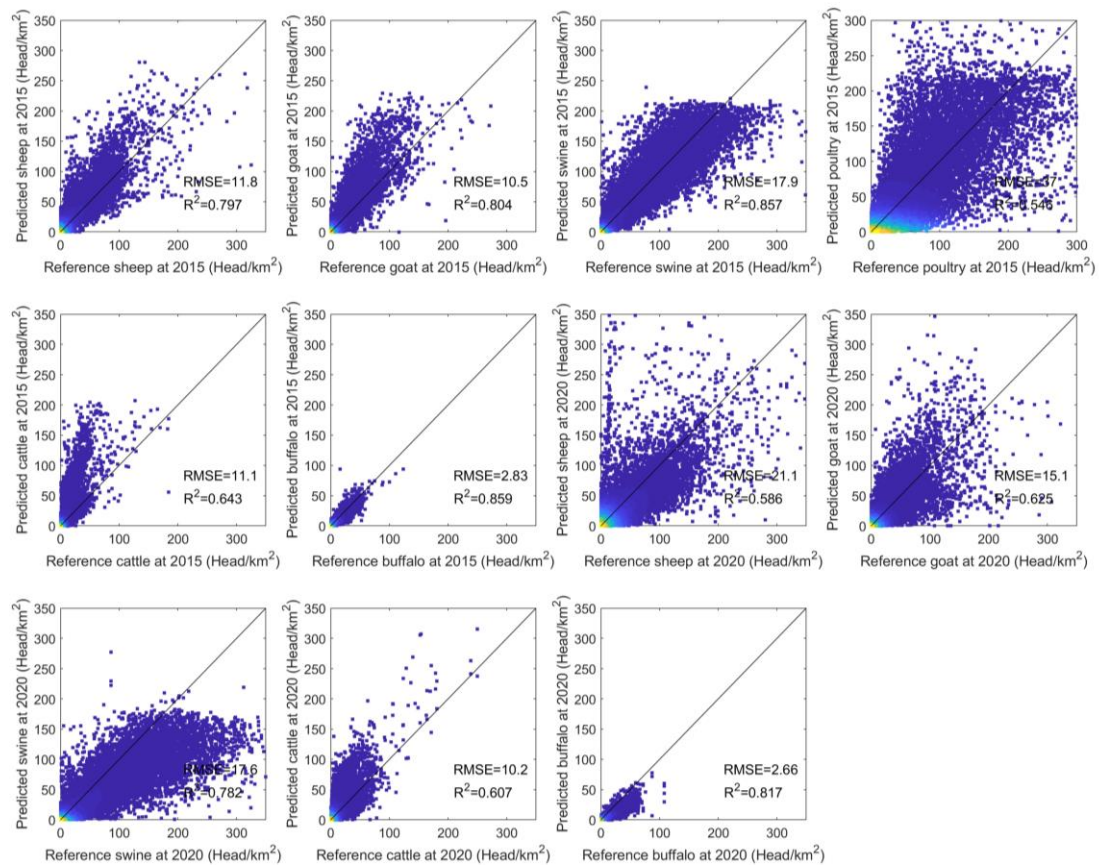


Figure S1. Comparison of the predicted livestock density with the reference from FAO (<http://www.fao.org/livestock-systems/en/>) at year 2015 and 2020.

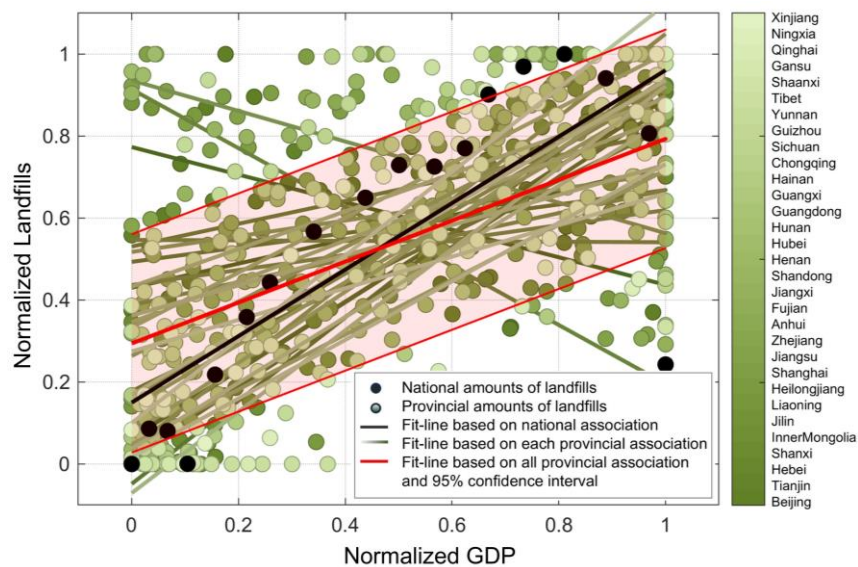


Figure S2. Association between landfills and GDP at nation and province level. The national association (black line) falls within the 95% confidence interval of the provincial associations (red line), indicating that the national trend effectively represents most provincial variations.

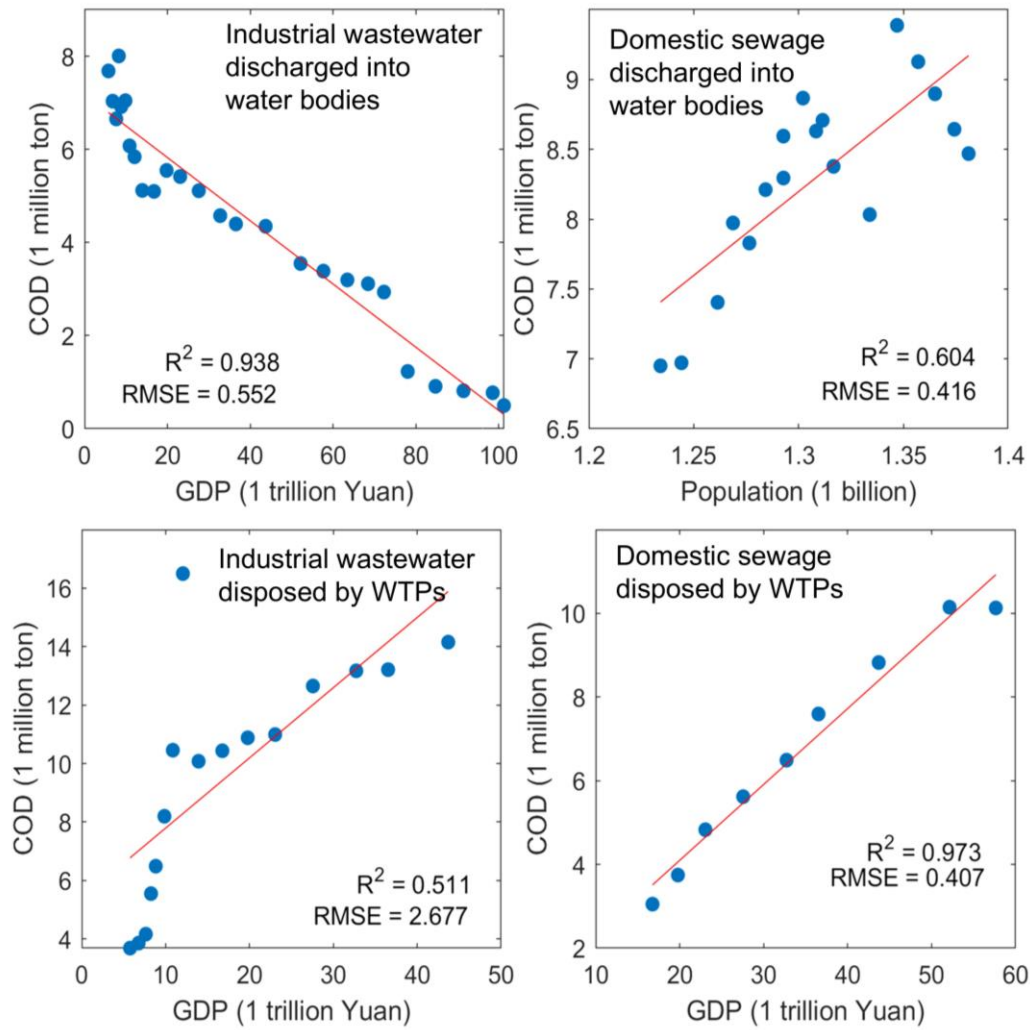


Figure S3. Association between GDP and the COD amounts of industrial wastewater directly discharged into waterbodies (a), the COD amounts of industrial wastewater disposed by WTPs (c), the COD amounts of domestic sewage disposed by WTPs (d). And the association between population and the COD amounts of domestic sewage directly discharged into waterbodies (b).