



Remote sensing measurements during PaCE 2022 campaign

Simo Tukiainen, Tuomas Siipola, Niko Leskinen, and Ewan O'Connor

Finnish Meteorological Institute, Atmospheric Composition Research, Helsinki, Finland

Correspondence: Simo Tukiainen (simo.tukiainen@fmi.fi)

Received: 20 December 2024 – Discussion started: 19 February 2025

Revised: 26 May 2025 – Accepted: 30 May 2025 – Published: 7 August 2025

Abstract. Continuous ground-based remote sensing measurements were conducted during the Pallas Cloud Experiment (PaCE) 2022 campaign. Remote sensing instruments, including two ceilometers (models CL31 and CL61, Vaisala Oyj), a Doppler cloud radar (model RPG-FMCW-94, RPG Radiometer Physics GmbH), and a Doppler wind lidar (model StreamLine XR, HALO Photonics), were deployed at Kenttäröva, Finland, a measurement station that is part of the Pallas Atmosphere–Ecosystem Supersite. The instruments operated continuously throughout the entire campaign, with the exception of a few technical interruptions and brief maintenance periods. The PaCE 2022 remote sensing measurements provided vertical profiles of atmospheric targets with high temporal and vertical resolution, extending from the ground up to an altitude of 10–15 km, depending on the instrument. By combining the data from these instruments and a numerical weather prediction model, cloud microphysical and macrophysical properties – such as ice water content, ice effective radius, and target classification – were retrieved using the Cloudnet methodology. The processed remote sensing data set complements the PaCE in situ measurements, providing valuable validation opportunities. The data set is available on the Cloudnet data portal at <https://doi.org/10.60656/b3460d9d88d14fe6> (O'Connor and Hyvärinen, 2024).

1 Introduction

Measurements of cloud and aerosol microphysical and macrophysical properties are crucial for understanding the complex cloud–aerosol interactions in the atmosphere. Both aerosols and clouds significantly influence Earth's climate system, and their incomplete representation leads to large uncertainties in climate and weather prediction models (e.g. Dagan et al., 2023; Shen et al., 2024). To address these knowledge gaps, comprehensive measurement campaigns, employing a broad suite of observational instruments, can provide new insights into the chemical and physical processes involved.

Arctic and Subarctic regions are particularly attractive locations for an intensive field campaign. High-latitude regions are projected to experience some of the most severe impacts of global warming (e.g. Neumann et al., 2019; Bailey et al., 2021), and these sensitive regions are often associated with the greatest modelling uncertainties. For example, low-level

mixed-phase clouds, common in subarctic conditions, are notably difficult to model accurately (Schmale et al., 2021).

Since 2004, the Finnish Meteorological Institute (FMI) has organized a series of measurement campaigns known as the Pallas Cloud Experiment (PaCE) to study cloud–aerosol interactions and cloud microphysics (e.g. Doulgeris et al., 2022). The PaCE campaigns have been carried out in Pallas, northern Finland, in a cold and clean subarctic environment (Komppula et al., 2005). The 2022 campaign took place from 12 September to 15 December 2022 and was the ninth PaCE since its inception.

Although the previous PaCE campaigns have focused mainly on studying cloud properties through in situ measurements (e.g. Kivekäs et al., 2009; Anttila et al., 2012; Doulgeris et al., 2023), some ground-based cloud remote sensing measurements were also performed at Kenttäröva during the PaCE 2015, 2017, and 2019 campaigns. Remote sensing observations provide useful data that are complementary to in situ measurements. Using a combination of remote



Figure 1. (a) Map of Finland showing the location of the Kenttäröva station (© Google Maps 2024), (b) photograph of the platform with instruments, and (c) photograph of the cabin with a Vaisala CL31 ceilometer on the roof.

sensing instruments, cloud microphysical and macrophysical properties can be retrieved through the entire vertical tropospheric profile using the so-called Cloudnet methodology (Illingworth et al., 2007; Griesche et al., 2024).

2 Site description

Kenttäröva is a measurement station in northern Finland ($67^{\circ}59' \text{ N}$, $24^{\circ}14' \text{ E}$; 347 m.a.s.l.) situated in a forested environment below the tree line, near the Sammaltunturi fell (Fig. 1a). Kenttäröva is part of the Pallas Atmosphere–Ecosystem Supersite hosted by the FMI, and it lies approximately 5.5 km to the east and about 220 m lower than the main Pallas station located on the top of Sammaltunturi. Cloud remote measurements conducted at Kenttäröva complement the in situ observations conducted at the summit of the fell. The top of the fell is occasionally inside a cloud, offering possibilities to study the same cloud via both measurement principles. A more comprehensive description of Kenttäröva, as well as the general weather and cloud conditions in the Pallas region, can be found in Hatakka et al. (2003) and Lohila et al. (2015).

The Kenttäröva station was established in 2002. The site features a 20 m high measurement tower for studying atmosphere–biosphere interactions above a spruce forest and is an ecosystem station for the Integrated Carbon Observation System (ICOS) network. Kenttäröva also has a platform for ground-based remote sensing instruments (Fig. 1b) and a small cabin to house the power and telecommunication systems and servers needed to operate the instruments and transfer data (Fig. 1c). Continuous cloud remote sensing measure-

ments at the site, with Cloudnet-compliant remote sensing instrumentation, began on 23 August 2022.

Kenttäröva will be one of the permanent cloud remote sensing sites in the Aerosol, Cloud and Trace Gases Research Infrastructure (ACTRIS, Laj et al., 2024), which is currently in its implementation phase. As part of ACTRIS, cloud remote sensing measurements at Kenttäröva will continue on a long-term basis in the future. The formal process to integrate Kenttäröva into ACTRIS is underway and is expected to be completed within the next few years.

3 Instrumentation

During the PaCE 2022 campaign, the Kenttäröva cloud remote sensing instrumentation included two ceilometers, a Doppler cloud radar, and a Doppler wind lidar (Table 1). Ceilometers are vertically pointing instruments. In the absence of a scanning unit, the cloud radar also points vertically. The Doppler lidar performs both vertical stare and azimuthal scan measurements at regular intervals.

As with all cloud remote sensing sites that comply with the ACTRIS requirements, Kenttäröva's remote sensing instruments normally operate continuously and autonomously. Human intervention is usually required only when technical issues occur, such as system failures or prolonged power cuts. At regular intervals, measurement data are automatically transferred to the ACTRIS Cloudnet data portal (CLU, 2024a) for processing and archiving. Depending on the instrument, the data submission interval ranges between 15 min and 1 h.

The Cloudnet data portal, hosted and developed by the FMI, is physically located in Helsinki, Finland. After receiving the raw measurement data, the Cloudnet portal processes and archives these data and provides free and open access to the raw data, processed products, and quick looks. Data can be downloaded via both a graphical user interface and a REST application programming interface (API). The Cloudnet portal is designed to work in real time and typically processes and makes the processed products available within a few minutes after receiving the raw data. In addition, quality controlling is performed automatically during processing using the cloudnetpy-qc software (CLU, 2024c).

3.1 Ceilometers

During the PaCE 2022 campaign, the FMI operated two ceilometers in Kenttäröva: a Vaisala CL61 (O'Connor, 2024b) and a Vaisala CL31 (O'Connor, 2024a). Both the CL61 and CL31 are manufactured by the Finnish company Vaisala. The CL61 model measures both the profile of the attenuated backscatter coefficient and the depolarization ratio up to a range of 15 km, while the less powerful CL31 model provides the profile of the attenuated backscatter coefficient up to a range of about 7.6 km and has no polarimetric capabilities. Both instruments operate in the near-infrared spectrum

Table 1. Cloud remote sensing instrumentation at Kenttäröva during the PaCE 2022 campaign.

Instrument	Primary measurements	Wavelength	Range	Range resolution	Time resolution
Vaisala CL31 ceilometer	Attenuated backscatter coefficient	910 nm	7.6 km	9.8 m	15 s
Vaisala CL61 ceilometer	Attenuated backscatter coefficient, linear depolarization ratio	910 nm	15 km	4.8 m	5 s
HALO StreamLine Doppler lidar	Attenuated backscatter coefficient, Doppler velocity, linear depolarization ratio	1565 nm	12 km	120 m	12 s
RPG-FMCW-94 cloud radar	Reflectivity factor, Doppler velocity, linear depolarization ratio, liquid-water path	3.2 mm	12 km	26–38 m	4 s

close to 910 nm wavelength. Although the ceilometer signal fully attenuates in thick liquid-cloud layers, making it ideal for determining cloud base height, it can also provide profile information on aerosols, ice clouds, and mixed-phase clouds in drier atmospheric conditions.

Both ceilometers were run on factory settings, without additional calibration factors applied during data processing. This can explain possible differences in the absolute value of the attenuated backscatter coefficient between the two instruments. Having a properly calibrated ceilometer is important for deriving quantitative aerosol properties from the observed backscatter signal. However, because the Cloudnet processing scheme uses the ceilometer mainly to detect aerosol presence and liquid layers, small biases in the attenuated backscatter coefficient do not significantly impact the Cloudnet retrievals.

In the PaCE 2022 data set, CL61 was the primary instrument used for the synergetic geophysical products when data from both ceilometers were available. It is the newer model and has a higher range, higher sensitivity, and better time and altitude sampling resolution compared to CL31 (Table 1). The time series of the noise-screened attenuated backscatter from CL31 and CL61 during PaCE 2022 are shown in Fig. 2c and d, respectively.

3.2 Doppler cloud radar

The FMI Doppler cloud radar (O’Connor, 2024d) deployed in Kenttäröva during the PaCE 2022 campaign is an RPG-FMCW-94 model manufactured by the German company RPG Radiometer Physics GmbH. The radar operates in the W band at 94 GHz frequency (a wavelength of 3.2 mm), making it sensitive to relatively large atmospheric targets such as ice particles, cloud droplets, and insects. The FMI cloud radar supports dual polarization and operates in a linear depolarization ratio (LDR) mode. The measured LDR is a useful proxy for detecting the melting layer and insects in the data. The PaCE 2022 noise-screened cloud radar reflectivity is presented in Fig. 2a.

Additionally, the FMI cloud radar contains a single-channel passive radiometer at 89 GHz for measuring the liquid-water path (LWP). The time series of the LWP from the PaCE 2022 campaign is shown in Fig. 2b. Standard Cloudnet instrumentation requires a dedicated multi-channel microwave radiometer (MWR) on site, but in certain atmospheric conditions a single-channel MWR is able to provide the LWP with sufficient accuracy. Figure 5 shows a comparison of the LWP from a similar RPG-FMCW-94 cloud radar (Moisseev, 2024b) and a multi-channel RPG-HATPRO-G5 microwave radiometer (Moisseev, 2024a) in Hyytiälä, Finland, around 680 km south of Kenttäröva, conducted at the same time as the PaCE 2022 campaign. Measured LWP values over 0.1 kg m^{-2} show a positive correlation ($r = 0.98$), with a mean difference of 7 g m^{-2} . For smaller values, the single-channel MWR measured a higher LWP, with a mean difference of 21 g m^{-2} .

At 94 GHz, radar reflectivity measurements can be significantly influenced by attenuation due to atmospheric gases, liquid droplets, rain, and the melting layer. While the PaCE 2022 radar reflectivity data were corrected for gas and liquid attenuation, corrections for rain and melting-layer attenuation were not applied. These attenuations can, in principle, be derived with the addition of a disdrometer, an in situ instrument that provides accurate data on the velocity and size distribution of precipitating particles. Unfortunately, no disdrometer was available during the campaign. As a result, certain properties, such as ice water content, could not be estimated accurately enough during periods of heavy rainfall.

It should be noted that the cloud radar was not specifically calibrated for the PaCE 2022 campaign using established methods such as those described by Toledo et al. (2020) or Jorquera et al. (2023). Furthermore, no disdrometer was available on site at the time to monitor or verify the calibration. Nevertheless, since the instrument had been recently acquired and because a liquid-nitrogen calibration was performed a month before the campaign, it is reasonable to assume that the radar reflectivity did not exhibit any significant bias during the observation period. One remaining potential source of error is radar mispointing. Since the cloud

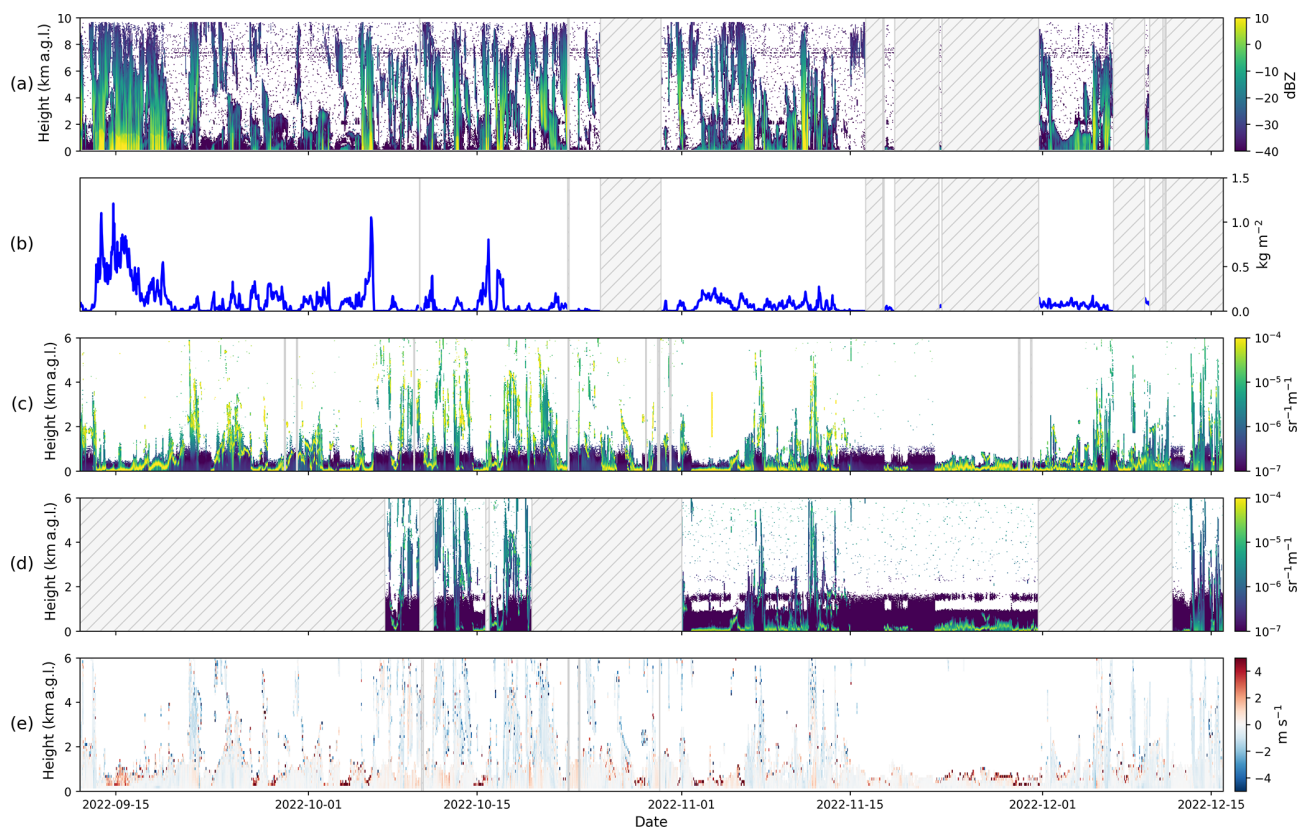


Figure 2. Example of noise-screened and hourly averaged measurement data during the campaign: **(a)** RPG-FMCW-94 radar reflectivity, **(b)** RPG-FMCW-94 liquid-water path, **(c)** CL31 attenuated backscatter coefficient, **(d)** CL61 attenuated backscatter coefficient, and **(e)** HALO Doppler velocity. The hatched regions indicate data gaps longer than 1 d.

radar used in this study lacked a scanning unit, its vertical alignment relied solely on its internal tilt sensor. Although mispointing is generally less problematic for zenith-pointing cloud radars than for satellite-based or scanning weather radars, its impact should still be quantified. Identifying and correcting radar mispointing in the PaCE 2022 data set is planned for future work.

3.3 Doppler wind lidar

The FMI Doppler wind lidar (O'Connor, 2024c) used during the PaCE 2022 was a StreamLine XR model manufactured by HALO Photonics. The HALO Doppler lidar operates at 1565 nm and provides the backscatter coefficient and Doppler velocity profiles up to a range of 12 km. Similarly to the CL61 ceilometer, the Doppler lidar can also measure the depolarization ratio. During the campaign, the lidar alternated between zenith-pointing stare measurements and velocity–azimuth display (VAD) scans at an elevation angle of 70°. The VAD scans were used to derive horizontal winds as a function of altitude (Päschke et al., 2015; Pichugina et al., 2017). Additionally, the instrument performed a background-noise measurement once per hour; these measurements were used to correct the Doppler lidar backscatter

coefficient measurements. The telescope focus function for the instrument was determined using the methodology described in Pentikäinen et al. (2020), which enables the retrieval of the attenuated backscatter coefficient profile.

The HALO Doppler lidar measurements from the PaCE 2022 campaign were processed with Doppy (Leskinen, 2024), software for processing data from Doppler lidars, written in Python and Rust and based on the MATLAB code by Manninen et al. (2016) and the methodology of Vakkari et al. (2019). The Doppler velocity measured during the campaign is shown in Fig. 2e. The Doppler lidar products were generated as complementary data for the PaCE 2022 campaign and were not used in the processing of the synergetic geophysical products. Although the Doppler lidar attenuated backscatter coefficient could be used in synergetic products, the two ceilometers offered a higher temporal resolution due to their non-scanning operation.

3.4 Model data

The Cloudnet processing requires atmospheric profiles of temperature, pressure, and humidity to accurately derive higher-level geophysical products. These profiles are normally obtained from a numerical weather prediction (NWP)

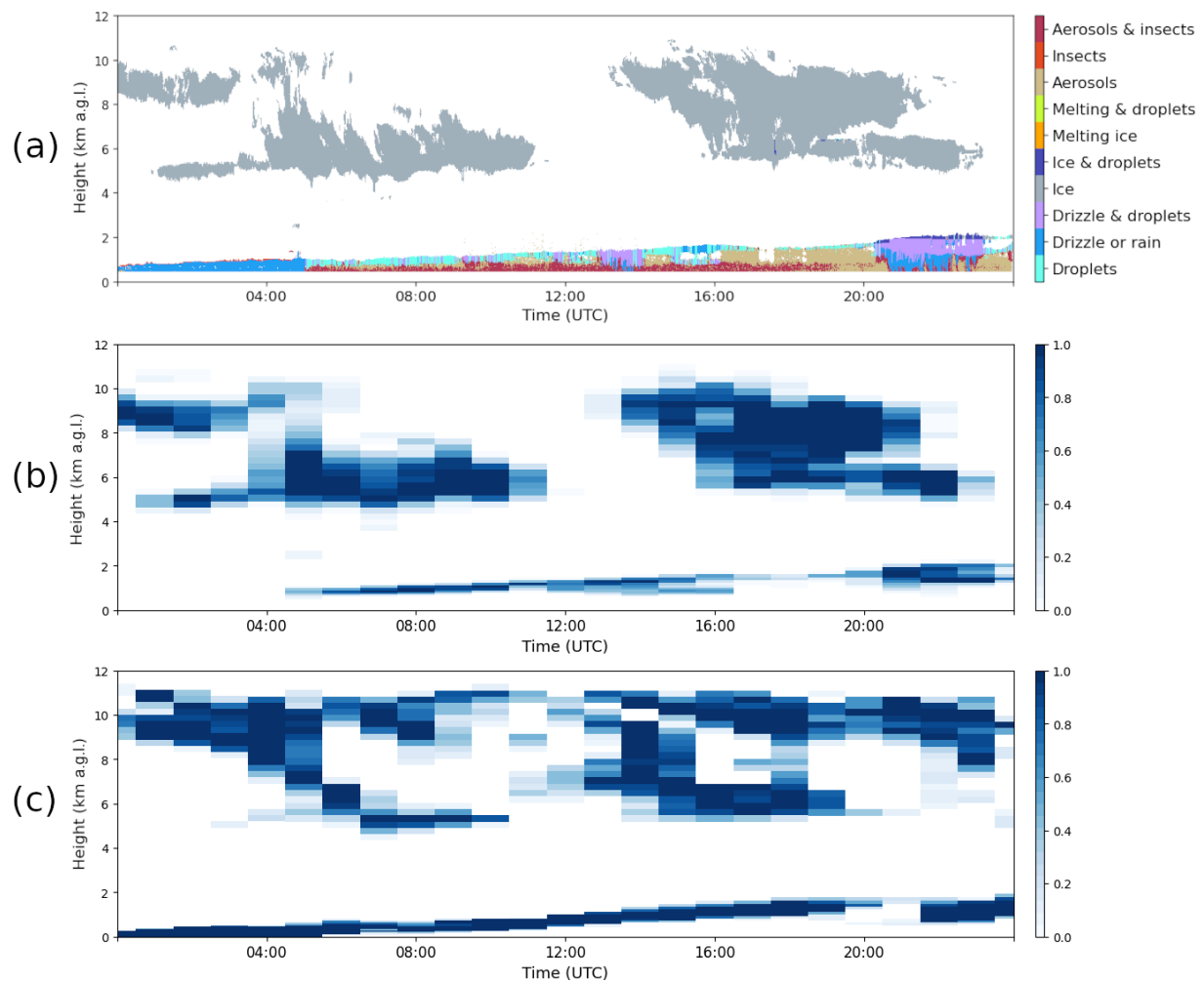


Figure 3. Example products on 23 September 2022: **(a)** Cloudnet target classification; **(b)** cloud fraction based on the classification, down-sampled to ECMWF IFS model level and time resolution; and **(c)** cloud fraction from the ECMWF IFS model.

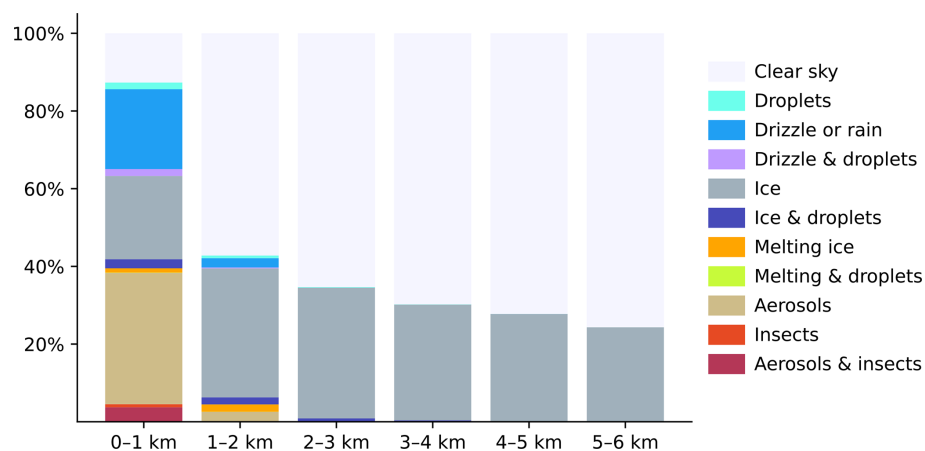


Figure 4. Distribution of target classes at different heights above ground level during the PaCE 2022 campaign.

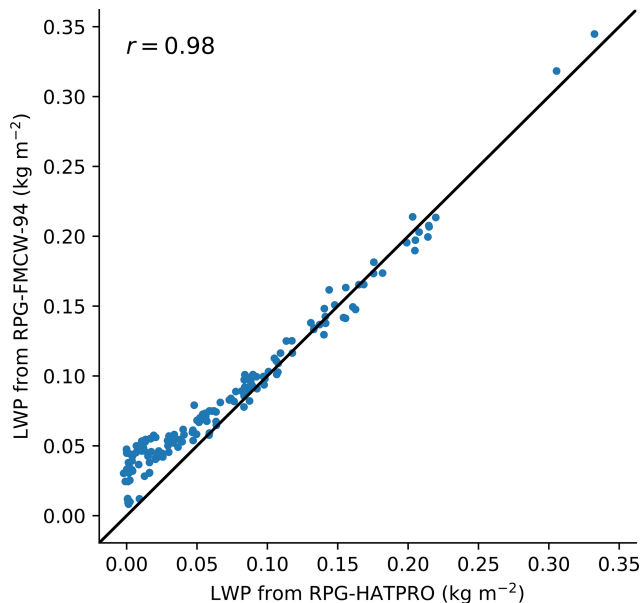


Figure 5. Comparison of liquid-water path (LWP) hourly average from a single-channel microwave radiometer of an RPG-FMCW-94 cloud radar and a multi-channel RPG-HATPRO-G5 microwave radiometer in Hyytiälä at the same time as the PaCE 2022 campaign. Data were only available for the end of the campaign from 2 to 15 December.

model or reanalysis data, but, in principle, measurements from a profiling instrument such as radiosondes or multi-channel microwave radiometers can also be used.

The PaCE 2022 data set was processed using the Integrated Forecast System (IFS) model provided by the European Centre for Medium-Range Weather Forecasting (ECMWF). The IFS is an operational global numerical weather prediction system which provides hourly values for 137 height levels up to an altitude of 80 km. The current model horizontal resolution is about 9 km, and the vertical resolution is better than 100 m in the lowest few kilometres of the atmosphere. The model profiles were extracted from the original global field at the closest grid point of the station. A full description of the IFS and the model updates over time can be found in the IFS documentation (ECMWF, 2024).

4 Derived products

To study cloud microphysical processes, remote sensing measurements must first be converted into meaningful geophysical properties. By using the synergy from co-located instruments that apply complementary measurement techniques, the full atmospheric profile can be reliably characterized. The main geophysical variables derived from remote sensing measurements during the PaCE 2022 campaign are listed in Table 2.

The ceilometer and cloud radar measurements, together with the NWP model data, were combined using the so-

called Cloudnet processing scheme (Illingworth et al., 2007). The main software for performing Cloudnet processing is the CloudnetPy Python package (Tukiainen et al., 2020). As a first step, the measurements are interpolated to a common time and height resolution. Then, each data point or pixel is categorized for the presence of liquid droplets, falling hydrometeors, freezing temperature, melting-ice particles, aerosols, and insects (Hogan and O'Connor, 2004). A single pixel may contain several categories at once.

Based on the categorization, pixels with drizzle, liquid, and ice are located. For drizzle pixels, parameters such as drizzle flux and mean particle size are retrieved from lidar and radar measurements (O'Connor et al., 2005). By combining radar reflectivity and model temperature, the ice water content (Hogan et al., 2006) and ice effective radius (Griesche et al., 2020) are calculated for ice pixels. Likewise, radar reflectivity is used to calculate the droplet effective radius (Frisch et al., 2002) for liquid pixels. The liquid-water content is derived by constraining the theoretical distributions of the adiabatic liquid-water content with the observed LWP over the depth of a cloud containing liquid pixels (Illingworth et al., 2007).

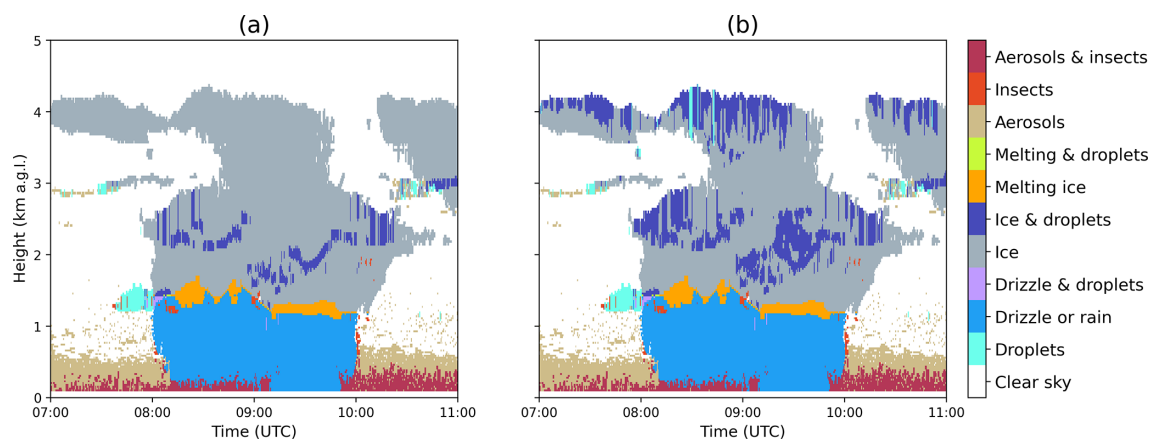
A target classification product is also derived from the categorization. In the target classification product, each pixel is assigned to one of 11 classes: “clear sky”, “aerosols and insects”, “insects”, “aerosols”, “melting and droplets”, “melting ice”, “ice and droplets”, “ice”, “drizzle and droplets”, “drizzle or rain”, or “droplets”. An example of a target classification from the PaCE 2022 campaign is shown in Fig. 3a. During the 24 h period, liquid clouds and precipitation were detected below 2 km, while ice clouds were seen above 4 km. Outside of precipitation, insects and aerosols were detected near the ground. Between 00:00 and 05:00 UTC, the ceilometer signal was fully attenuated very close to the ground due to low-level cloud or fog, but the radar observations showed precipitation, and this was classified as drizzle or rain.

The overall distribution of the target classification during the campaign is shown in Fig. 4. Typically, aerosols and liquid were only detected below 1 km, while ice was detected higher up. Most aerosols and liquid were detected at the beginning of the campaign, when surface temperatures were above freezing. Toward the end of the campaign, surface temperatures dropped below freezing, and ice clouds were also commonly detected below 1 km.

One of the aims of Cloudnet is the evaluation of NWP models based on properties such as cloud fraction and liquid-water and ice water contents (Illingworth et al., 2007). Figure 3b shows the cloud fraction calculated based on classification and downsampled to the time and height resolution of the ECMWF IFS model. Compared with the corresponding cloud fraction from the IFS model (Fig. 3c), both are capable of detecting similar liquid and ice clouds, but, for example, the low-level cloud between 00:00 and 05:00 UTC is classified differently in the model and in the Cloudnet classification.

Table 2. Main geophysical variables derived from cloud remote sensing measurements with units, mean uncertainty during the campaign, and retrieval method.

Variable	Units	Uncertainty	Method
Drizzle median diameter	m	42 %	O'Connor et al. (2005)
Drizzle number concentration	m^{-3}	70 %	O'Connor et al. (2005)
Droplet effective radius	m	31 %	Frisch et al. (2002)
Ice effective radius	m	57 %	Griesche et al. (2020)
Ice water content	kg m^{-3}	83 %	Hogan et al. (2006)
Liquid-water content	kg m^{-3}	11 %	Illingworth et al. (2007)

**Figure 6.** Example of the Cloudnet target classification on 24 September 2022 using (a) standard Cloudnet method and (b) VODOO method.

A current limitation of the Cloudnet classification algorithm is that, while the cloud radar can reliably detect multiple cloud layers, the ceilometer signal will fully attenuate in the first encountered thick liquid-cloud layer, rain, drizzle, or fog. To overcome this limitation, a machine-learning-based method called VODOO (Schimmel et al., 2022) has been developed. The VODOO method uses the cloud radar Doppler spectra to estimate the probability of supercooled liquid in mixed-phase clouds. This probability can then be used in the categorization of liquid pixels. Figure 6 shows a comparison of the Cloudnet classification using the standard method and the VODOO method. The standard method detects less supercooled liquid than VODOO and fails to identify any liquid above 3 km due to lidar attenuation. Under optically thick cloud conditions like this, VODOO improves the standard classification, but more validation work is needed before it can be used operationally.

5 Data availability

The PaCE 2022 remote sensing data set can be found at <https://doi.org/10.60656/b3460d9d88d14fe6> (O'Connor and Hyvärinen, 2024). The data set is published on the ACTRIS Cloudnet data portal (CLU, 2024a) (<https://cloudnet.fmi.fi>) under the Creative Commons Attribution 4.0 licence.

The data set includes noise-screened and harmonized instrument products, model products, and higher-level derived synergetic geophysical products. The data set contains 1355 files, and the total size of the set is 23.1 GB. The data set is organized into daily product files and stored in a NetCDF file format following the Cloudnet convention (CLU, 2024b).

Some products in the data set, such as Doppler wind lidar products and the VODOO classification, are still under development, and their methods and implementations may be improved in the future. To distinguish them from the more mature products, they are labelled as experimental. The raw measurements are not part of the data set but can still be accessed through the Cloudnet portal.

6 Code availability

The software for processing and visualizing the PaCE 2022 remote sensing data is written in Python and published on Zenodo (<https://doi.org/10.5281/zenodo.14179656>, Tukiainen et al., 2024). The ACTRIS Cloudnet data portal (CLU, 2024a) is also open source and follows the FAIR (Findable, Accessible, Interoperable, and Reusable) principles (Wilkinson et al., 2016).

7 Conclusions

Cloud remote sensing measurements were conducted during the PaCE 2022 measurement campaign. Two ceilometers, a Doppler cloud radar, and a Doppler wind lidar were deployed at the Kenttäröva station, a measurement site part of the Pallas Atmosphere–Ecosystem Supersite. Kenttäröva will be a permanent cloud remote sensing facility within the ACTRIS research infrastructure.

The remote sensing instruments operated continuously for the duration of the PaCE 2022 campaign, excluding a few technical breaks, providing vertical profiles of cloud properties with high vertical and temporal resolutions up to 15 km. From the raw measurement data, geophysical synergetic products were derived using the Cloudnet methodology. The raw measurements and processed data products were made available through the Cloudnet data portal according to the FAIR principles.

The retrieved vertical profiles of cloud properties could be validated in the future using in situ measurements taken within the same cloud at the top of Sammallunturi. This verification would be valuable as the ACTRIS Cloudnet measurements are expected to serve as key validation data for satellite observations and various NWP models.

Author contributions. ST wrote the paper with TS. ST is the lead author of CloudnetPy and has been one of the main developers of the ACTRIS Cloudnet data portal since 2017. TS has developed the data portal and processing software since 2022. EO'C installed and operated the remote sensing instruments at the site and is one of the original developers of the Cloudnet concept and methodology. NL generated the Doppler lidar products.

Competing interests. The contact author has declared that none of the authors has any competing interests.

Disclaimer. Publisher's note: Copernicus Publications remains neutral with regard to jurisdictional claims made in the text, published maps, institutional affiliations, or any other geographical representation in this paper. While Copernicus Publications makes every effort to include appropriate place names, the final responsibility lies with the authors.

Special issue statement. This article is part of the special issue "Data generated during the Pallas Cloud Experiment 2022 campaign". It is not associated with a conference.

Acknowledgements. The authors thank the Academy of Finland for supporting the ACTRIS activities in Finland. The authors acknowledge the ECMWF for providing the IFS model data.

Financial support. The work was supported by the European Union Framework Programme for Research and Innovation, EU Horizon 2020 (ACTRIS IMP, grant no. 871115).

Review statement. This paper was edited by Alexander Böhm-länder and reviewed by two anonymous referees.

References

- Anttila, T., Brus, D., Jaatinen, A., Hyvärinen, A.-P., Kivekäs, N., Romakkaniemi, S., Komppula, M., and Lihavainen, H.: Relationships between particles, cloud condensation nuclei and cloud droplet activation during the third Pallas Cloud Experiment, *Atmos. Chem. Phys.*, 12, 11435–11450, <https://doi.org/10.5194/acp-12-11435-2012>, 2012.
- Bailey, H., Hubbard, A., Klein, E. S., Mustonen, K.-R., Akers, P. D., Marttila, H., and Welker, J. M.: Arctic sea-ice loss fuels extreme European snowfall, *Nat. Geosci.*, 14, 283–288, <https://doi.org/10.1038/s41561-021-00719-y>, 2021.
- CLU: Cloudnet Data Portal, ACTRIS Cloud Remote Sensing Data Centre Unit (CLU), <https://cloudnet.fmi.fi>, last access: 11 December 2024a.
- CLU: Cloudnet NetCDF Convention, ACTRIS Cloud Remote Sensing Data Centre Unit (CLU), <https://docs.cloudnet.fmi.fi/netcdf.html>, last access: 16 December 2024b.
- CLU: Cloudnet Quality Control Software, ACTRIS Cloud Remote Sensing Data Centre Unit (CLU), <https://github.com/actris-cloudnet/cloudnetpy-qc>, last access: 12 December 2024c.
- Dagan, G., Yehekel, N., and Williams, A. I. L.: Radiative forcing from aerosol–cloud interactions enhanced by large-scale circulation adjustments, *Nat. Geosci.*, 16, 1092–1098, <https://doi.org/10.1038/s41561-023-01319-8>, 2023.
- Doulgeris, K. M., Lihavainen, H., Hyvärinen, A.-P., Kerminen, V.-M., and Brus, D.: An extensive data set for in situ microphysical characterization of low-level clouds in a Finnish sub-Arctic site, *Earth Syst. Sci. Data*, 14, 637–649, <https://doi.org/10.5194/essd-14-637-2022>, 2022.
- Doulgeris, K. M., Vakkari, V., O'Connor, E. J., Kerminen, V.-M., Lihavainen, H., and Brus, D.: Influence of air mass origin on microphysical properties of low-level clouds in a subarctic environment, *Atmos. Chem. Phys.*, 23, 2483–2498, <https://doi.org/10.5194/acp-23-2483-2023>, 2023.
- ECMWF: IFS documentation, European Centre for Medium-Range Weather Forecasts (ECMWF), <https://www.ecmwf.int/en/publications/ifs-documentation>, last access: 10 December 2024.
- Frisch, S., Shupe, M., Djalalova, I., Feingold, G., and Poellot, M.: The Retrieval of Stratus Cloud Droplet Effective Radius with Cloud Radars, *J. Atmos. Ocean. Tech.*, 19, 835–842, [https://doi.org/10.1175/1520-0426\(2002\)019<0835:TROSCD>2.0.CO;2](https://doi.org/10.1175/1520-0426(2002)019<0835:TROSCD>2.0.CO;2), 2002.
- Griesche, H. J., Seifert, P., Ansmann, A., Baars, H., Barrientos Velasco, C., Bühl, J., Engelmann, R., Radenz, M., Zhenping, Y., and Macke, A.: Application of the shipborne remote sensing supersite OCEANET for profiling of Arctic aerosols and clouds during *Polarstern* cruise PS106, *Atmos. Meas. Tech.*, 13, 5335–5358, <https://doi.org/10.5194/amt-13-5335-2020>, 2020.

- Griesche, H. J., Seifert, P., Engelmann, R., Radenz, M., Hofer, J., Althausen, D., Walbröl, A., Barrientos-Velasco, C., Baars, H., Dahlke, S., Tukiainen, S., and Macke, A.: Cloud micro- and macrophysical properties from ground-based remote sensing during the MOSAiC drift experiment, *Scientific Data*, 11, 505, <https://doi.org/10.1038/s41597-024-03325-w>, 2024.
- Hatakka, J., Aalto, T., Aaltonen, V., Aurela, M., Hakola, H., Kompula, M., Laurila, T., Lihavainen, H., Paatero, J., Salminen, K., and Viisanen, Y.: Overview of the atmospheric research activities and results at Pallas GAW station, *Boreal Environ. Res.*, 8, 365–383, <https://doi.org/10.60910/8msr-ygys>, 2003.
- Hogan, R. J. and O'Connor, E. J.: Facilitating cloud radar and lidar algorithms: the Cloudnet Instrument Synergy/Target Categorization product, <https://www.met.reading.ac.uk/~swrhgnrj/publications/categorization.pdf> (last access: 6 May 2025), 2004.
- Hogan, R. J., Mittermaier, M. P., and Illingworth, A. J.: The Retrieval of Ice Water Content from Radar Reflectivity Factor and Temperature and Its Use in Evaluating a Mesoscale Model, *J. Appl. Meteorol. Clim.*, 45, 301–317, <https://doi.org/10.1175/JAM2340.1>, 2006.
- Illingworth, A. J., Hogan, R. J., O'Connor, E., Bouniol, D., Brooks, M. E., Delanoë, J., Donovan, D. P., Eastment, J. D., Gaussiat, N., Goddard, J. W. F., Haefelin, M., Baltink, H. K., Krasnov, O. A., Pelon, J., Piriou, J.-M., Protat, A., Russchenberg, H. W. J., Seifert, A., Tompkins, A. M., van Zadelhoff, G.-J., Vinit, F., Willén, U., Wilson, D. R., and Wrench, C. L.: Cloudnet: Continuous Evaluation of Cloud Profiles in Seven Operational Models Using Ground-Based Observations, *B. Am. Meteorol. Soc.*, 88, 883–898, <https://doi.org/10.1175/BAMS-88-6-883>, 2007.
- Jorquera, S., Toledo Bittner, F., Delanoë, J., Berne, A., Billault-Roux, A.-C., Schwarzenboeck, A., Dezitter, F., Viltard, N., and Martini, A.: Calibration transfer methodology for cloud radars based on ice cloud observations, *J. Atmos. Ocean. Tech.*, 40, 773–788, 2023.
- Kivekäs, N., Kerminen, V.-M., Raatikainen, T., Vaattovaara, P., Laaksonen, A., and Lihavainen, H.: Physical and chemical characteristics of aerosol particles and cloud-droplet activation during the Second Pallas Cloud Experiment (Second PaCE), *Boreal Environ. Res.*, 14, 515–526, 2009.
- Komppula, M., Lihavainen, H., Kerminen, V.-M., Kulmala, M., and Viisanen, Y.: Measurements of cloud droplet activation of aerosol particles at a clean subarctic background site, *J. Geophys. Res.-Atmos.*, 110, D06204, <https://doi.org/10.1029/2004JD005200>, 2005.
- Laj, P., Myhre, C. L., Riffault, V., Amiridis, V., Fuchs, H., Eleftheriadis, K., Petäjä, T., Salameh, T., Kivekäs, N., Juurola, E., Saponaro, G., Philippin, S., Cornacchia, C., Arboledas, L. A., Baars, H., Claude, A., Mazière, M. D., Dils, B., Dufresne, M., Evangelou, N., Favez, O., Fiebig, M., Haefelin, M., Herrmann, H., Höhler, K., Illmann, N., Kreuter, A., Ludewig, E., Marinou, E., Möhler, K., Mona, L., Murberg, L. E., Nicolaie, D., Novelli, A., O'Connor, E., Ohneiser, K., Altieri, R. M. P., Picquet-Varraut, B., van Pinxteren, D., Pospichal, B., Putaud, J.-P., Reimann, S., Siomos, N., Stachlewska, I., Tillmann, R., Voudouri, K. A., Wandinger, U., Wiedensohler, A., Apituley, A., Comerón, A., Gysel-Beer, M., Mihalopoulos, N., Nikolova, N., Pietruczuk, A., Sauvage, S., Sciare, J., Skov, H., Svendby, T., Swietlicki, E., Tonev, D., Vaughan, G., Zdimal, V., Baltensperger, U., Doussin, J.-F., Kulmala, M., Pappalardo, G., Sundet, S. S., and Vana, M.: Aerosol, Clouds and Trace Gases Research Infrastructure (ACTRIS): The European Research Infrastructure Supporting Atmospheric Science, *B. Am. Meteorol. Soc.*, 105, E1098–E1136, <https://doi.org/10.1175/BAMS-D-23-0064.1>, 2024.
- Leskinen, N.: Doppy, GitHub [code], <https://github.com/actris-cloudnet/doppy> (last access: 4 August 2025), 2024.
- Lohila, A., Penttilä, T., Jortikka, S., Aalto, T., Anttila, P., Asmi, E., Aurela, M., Hatakka, J., Hellén, H., Henttonen, H., Hänninen, P., Kilkki, J., Kyllönen, K., Laurila, T., Lepistö, A., Lihavainen, H., Makkonen, U., Paatero, J., Rask, M., Sutinen, R., Tuovinen, J.-P., Vuorenmaa, J., and Viisanen, Y.: Preface to the special issue on integrated research of atmosphere, ecosystems and environment at Pallas, *Boreal Environ. Res.*, 20, 431–454, 2015.
- Manninen, A. J., O'Connor, E. J., Vakkari, V., and Petäjä, T.: A generalised background correction algorithm for a Halo Doppler lidar and its application to data from Finland, *Atmos. Meas. Tech.*, 9, 817–827, <https://doi.org/10.5194/amt-9-817-2016>, 2016.
- Moisseev, D.: UH HATPRO-G5, ACTRIS Cloud Remote Sensing Data Centre Unit (CLU), <https://hdl.handle.net/21.12132/3.f360a2375f3e4e4f> (last access: 4 August 2025), 2024a.
- Moisseev, D.: UH RPG-FMCW-94, ACTRIS Cloud Remote Sensing Data Centre Unit (CLU), <https://hdl.handle.net/21.12132/3.191564170f8a4686> (last access: 4 August 2025), 2024b.
- Neumann, R. B., Moorberg, C. J., Lundquist, J. D., Turner, J. C., Waldrop, M. P., McFarland, J. W., Euskirchen, E. S., Edgar, C. W., and Turetsky, M. R.: Warming Effects of Spring Rainfall Increase Methane Emissions From Thawing Permafrost, *Geophys. Res. Lett.*, 46, 1393–1401, <https://doi.org/10.1029/2018GL081274>, 2019.
- O'Connor, E.: FMI CL31, ACTRIS Cloud Remote Sensing Data Centre Unit (CLU), <https://hdl.handle.net/21.12132/3.2a7c4f8b6c1344f3> (last access: 4 August 2025), 2024a.
- O'Connor, E.: FMI CL61-B, ACTRIS Cloud Remote Sensing Data Centre Unit (CLU), <https://hdl.handle.net/21.12132/3.f33e53dddde44495> (last access: 4 August 2025), 2024b.
- O'Connor, E.: FMI HALO 146, ACTRIS Cloud Remote Sensing Data Centre Unit (CLU), <https://hdl.handle.net/21.12132/3.a93d1483f10742ff> (last access: 4 August 2025), 2024c.
- O'Connor, E.: FMI RPG-FMCW-94-DP, ACTRIS Cloud Remote Sensing Data Centre Unit (CLU), <https://hdl.handle.net/21.12132/3.e44e1ffac7954538> (last access: 4 August 2025), 2024d.
- O'Connor, E. and Hyvärinen, A.: Custom collection of categorize, categorize (Voodoo), classification, classification (Voodoo), Doppler lidar, and 12 other products from Kenttäröva between 12 Sep and 15 Dec 2022, ACTRIS Cloud Remote Sensing Data Centre Unit (CLU) [data set], <https://doi.org/10.60656/b3460d9d88d14fe6>, 2024.
- O'Connor, E. J., Hogan, R. J., and Illingworth, A. J.: Retrieving Stratocumulus Drizzle Parameters Using Doppler Radar and Lidar, *J. Appl. Meteorol.*, 44, 14–27, <https://doi.org/10.1175/JAM-2181.1>, 2005.
- Päschke, E., Leinweber, R., and Lehmann, V.: An assessment of the performance of a 1.5 μm Doppler lidar for operational vertical wind profiling based on a 1-year trial, *Atmos. Meas. Tech.*, 8, 2251–2266, <https://doi.org/10.5194/amt-8-2251-2015>, 2015.
- Pentikäinen, P., O'Connor, E. J., Manninen, A. J., and Ortiz-Amezcu, P.: Methodology for deriving the telescope focus func-

- tion and its uncertainty for a heterodyne pulsed Doppler lidar, *Atmos. Meas. Tech.*, 13, 2849–2863, <https://doi.org/10.5194/amt-13-2849-2020>, 2020.
- Pichugina, Y. L., Banta, R. M., Olson, J. B., Carley, J. R., Marquis, M. C., Brewer, W. A., Wilczak, J. M., Djalalova, I., Bianco, L., James, E. P., Benjamin, S. G., and Cline, J.: Assessment of NWP Forecast Models in Simulating Offshore Winds through the Lower Boundary Layer by Measurements from a Ship-Based Scanning Doppler Lidar, *Mon. Weather Rev.*, 145, 4277–4301, <https://doi.org/10.1175/MWR-D-16-0442.1>, 2017.
- Schimmel, W., Kalesse-Los, H., Maahn, M., Vogl, T., Foth, A., Garfias, P. S., and Seifert, P.: Identifying cloud droplets beyond lidar attenuation from vertically pointing cloud radar observations using artificial neural networks, *Atmos. Meas. Tech.*, 15, 5343–5366, <https://doi.org/10.5194/amt-15-5343-2022>, 2022.
- Schmale, J., Zieger, P., and Ekman, A. M. L.: Aerosols in current and future Arctic climate, *Nat. Clim. Change*, 11, 95–105, <https://doi.org/10.1038/s41558-020-00969-5>, 2021.
- Shen, J., Russell, D. M., DeVivo, J., Kunkler, F., Baalbaki, R., Mentler, B., Scholz, W., Yu, W., Caudillo-Plath, L., Sommer, E., Ahongshangbam, E., Alfaouri, D., Almeida, J., Amorim, A., Beck, L. J., Beckmann, H., Berntheusel, M., Bhattacharyya, N., Canagaratna, M. R., Chassaing, A., Cruz-Simbron, R., Dada, L., Duplissy, J., Gordon, H., Granzin, M., Große Schulte, L., Heinritzi, M., Iyer, S., Klebach, H., Krüger, T., Kürten, A., Lampimäki, M., Liu, L., Lopez, B., Martinez, M., Morawiec, A., Onnela, A., Peltola, M., Rato, P., Reza, M., Richter, S., Rörup, B., Sebastian, M. K., Simon, M., Surdu, M., Tamme, K., Thakur, R. C., Tomé, A., Tong, Y., Top, J., Umo, N. S., Unfer, G., Vettikkat, L., Weissbacher, J., Xenofontos, C., Yang, B., Zauner-Wieczorek, M., Zhang, J., Zheng, Z., Baltensperger, U., Christoudias, T., Flagan, R. C., El Haddad, I., Junninen, H., Möhler, O., Riipinen, I., Rohner, U., Schobesberger, S., Volkamer, R., Winkler, P. M., Hansel, A., Lehtipalo, K., Donahue, N. M., Lelieveld, J., Harder, H., Kulmala, M., Worsnop, D. R., Kirkby, J., Curtius, J., and He, X.-C.: New particle formation from isoprene under upper-tropospheric conditions, *Nature*, 636, 115–123, <https://doi.org/10.1038/s41586-024-08196-0>, 2024.
- Toledo, F., Delanoë, J., Haeffelin, M., Dupont, J.-C., Jorquera, S., and Le Gac, C.: Absolute calibration method for frequency-modulated continuous wave (FMCW) cloud radars based on corner reflectors, *Atmos. Meas. Tech.*, 13, 6853–6875, <https://doi.org/10.5194/amt-13-6853-2020>, 2020.
- Tukiainen, S., Siipola, T., Korpinen, A., and O'Connor, E.: CloudnetPy: A Python package for processing cloud remote sensing data (v1.66.16), Zenodo [code], <https://doi.org/10.5281/zenodo.14179656>, 2024.
- Tukiainen, S., O'Connor, E., and Korpinen, A.: CloudnetPy: A Python package for processing cloud remote sensing data, *Journal of Open Source Software*, 5, 2123, <https://doi.org/10.21105/joss.02123>, 2020.
- Vakkari, V., Manninen, A. J., O'Connor, E. J., Schween, J. H., van Zyl, P. G., and Marinou, E.: A novel post-processing algorithm for Halo Doppler lidars, *Atmos. Meas. Tech.*, 12, 839–852, <https://doi.org/10.5194/amt-12-839-2019>, 2019.
- Wilkinson, M. D., Dumontier, M., Aalbersberg, I. J., Appleton, G., Axton, M., Baak, A., Blomberg, N., Boiten, J.-W., da Silva Santos, L. B., Bourne, P. E., Bouwman, J., Brookes, A. J., Clark, T., Crosas, M., Dillo, I., Dumon, O., Edmunds, S., Evelo, C. T., Finkers, R., Gonzalez-Beltran, A., Gray, A. J., Groth, P., Goble, C., Grethe, J. S., Heringa, J., 't Hoen, P. A., Hooft, R., Kuhn, T., Kok, R., Kok, J., Lusher, S. J., Martone, M. E., Mons, A., Packer, A. L., Persson, B., Rocca-Serra, P., Roos, M., van Schaik, R., Sansone, S.-A., Schultes, E., Sengstag, T., Slater, T., Strawn, G., Swertz, M. A., Thompson, M., van der Lei, J., van Mulligen, E., Velterop, J., Waagmeester, A., Wittenburg, P., Wolstencroft, K., Zhao, J., and Mons, B.: The FAIR Guiding Principles for scientific data management and stewardship, *Scientific Data*, 3, 160018, <https://doi.org/10.1038/sdata.2016.18>, 2016.