



Supplement of

cigChannel: a large-scale 3D seismic dataset with labeled paleochannels for advancing deep learning in seismic interpretation

Guangyu Wang et al.

Correspondence to: Xinming Wu (xinmwu@ustc.edu.cn)

The copyright of individual parts of the supplement might differ from the article licence.

Contents:

- **Figure S1: Seismic impedance volumes in the *cigChannel* dataset.**
- **Figure S2: Sedimentary facies volumes in the *cigChannel* dataset.**

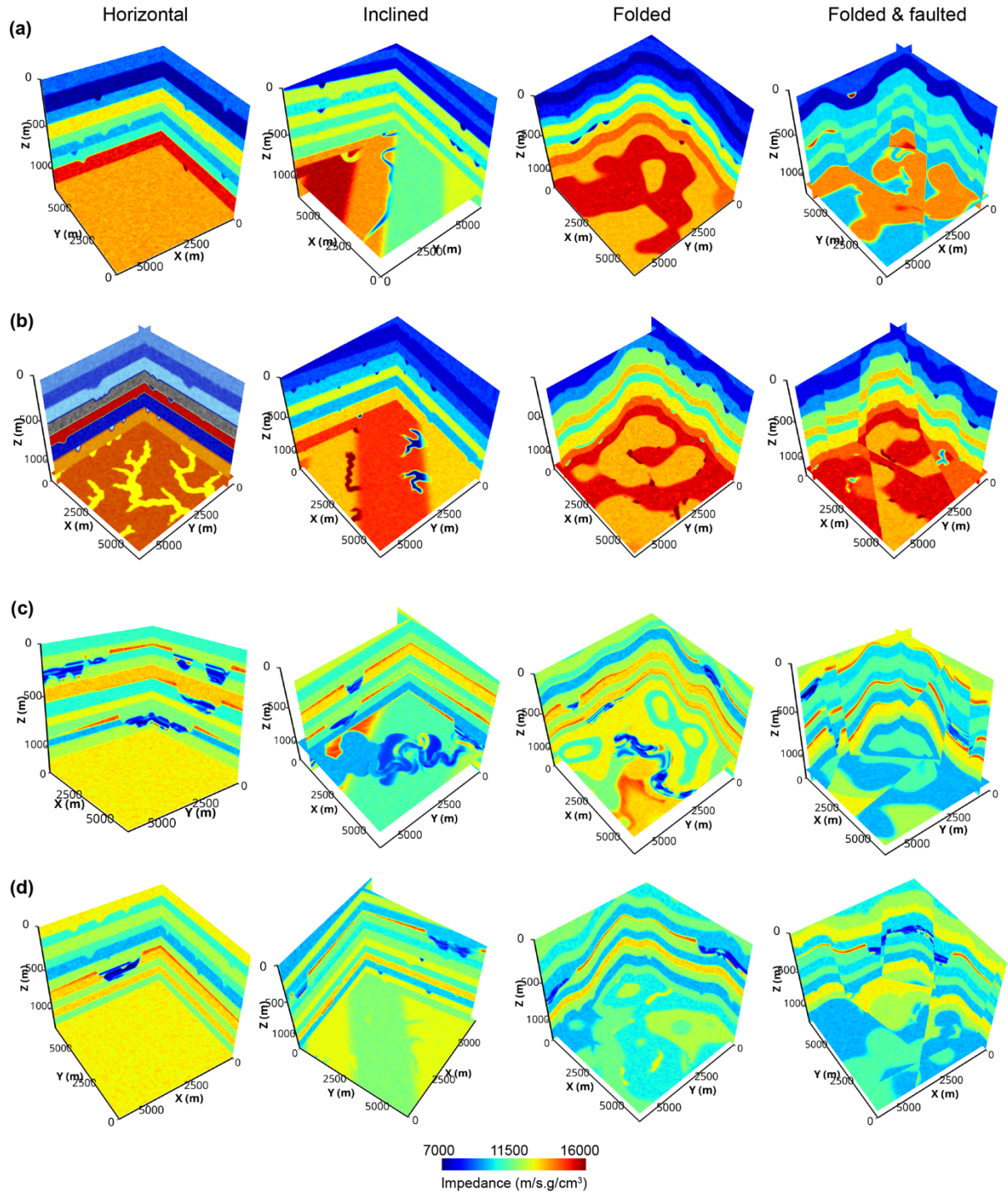
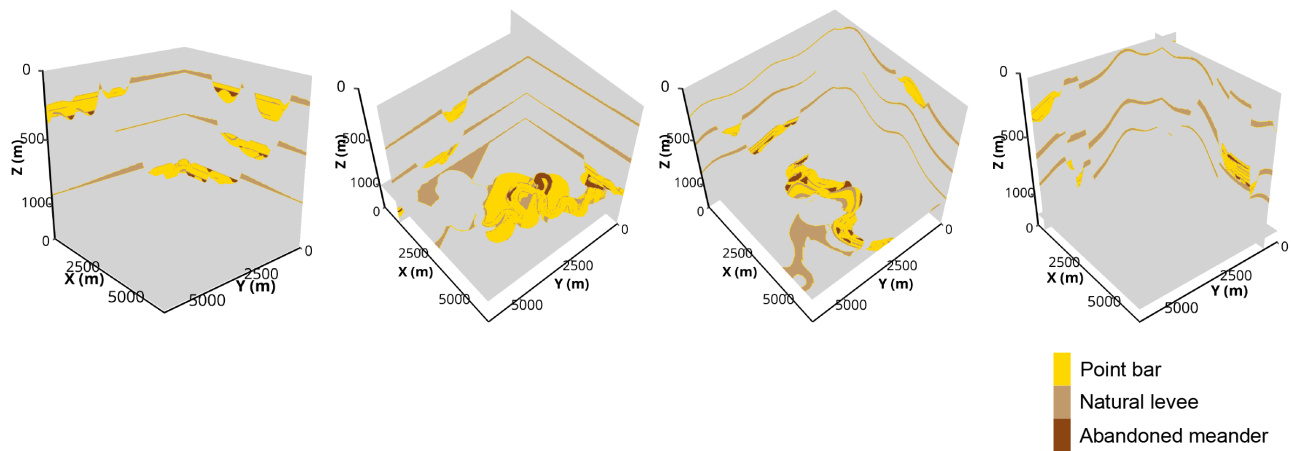


Figure S1. Seismic impedance volumes in the (a) meandering channel, (b) tributary channel network, (c) submarine canyon and (d) assorted channel subsets of the *cigChannel* dataset. These impedance volumes correspond to the seismic volumes demonstrated in Figure 9 in the main text.



10

Figure S2. Sedimentary facies volumes in the submarine canyon subset of the *cigChannel* dataset, which correspond to the seismic volumes demonstrated in Figure 9c in the main text.