



Supplement of

A decade-long cruise time series (2008–2018) of physical and biogeochemical conditions in the southern Salish Sea, North America

Simone R. Alin et al.

Correspondence to: Simone R. Alin (simone.r.alin@noaa.gov)

The copyright of individual parts of the supplement might differ from the article licence.

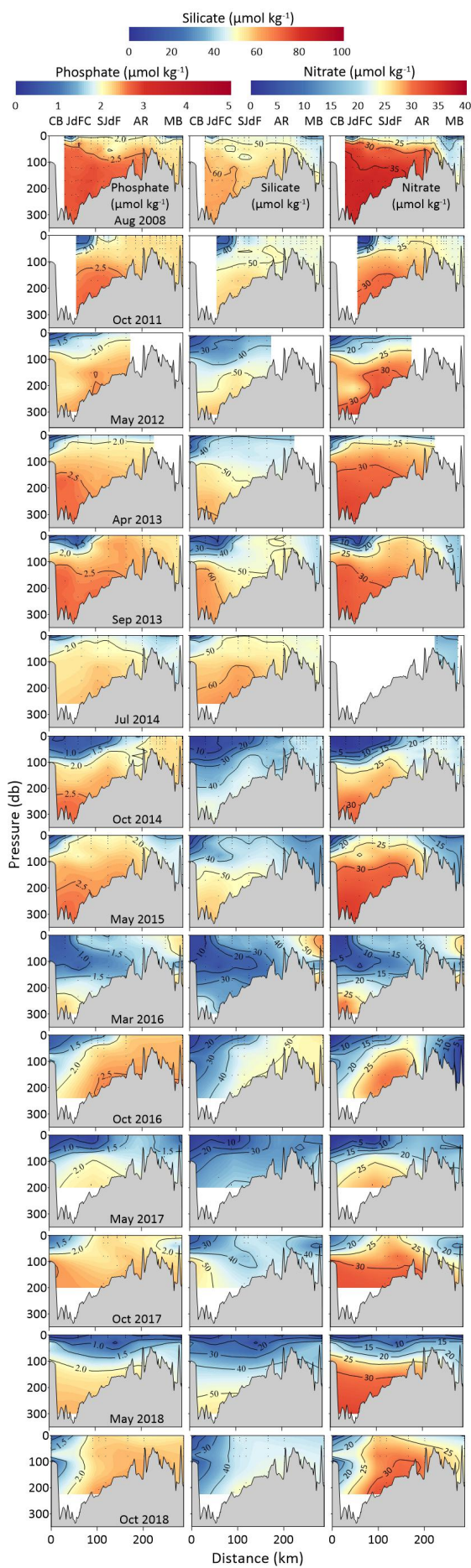
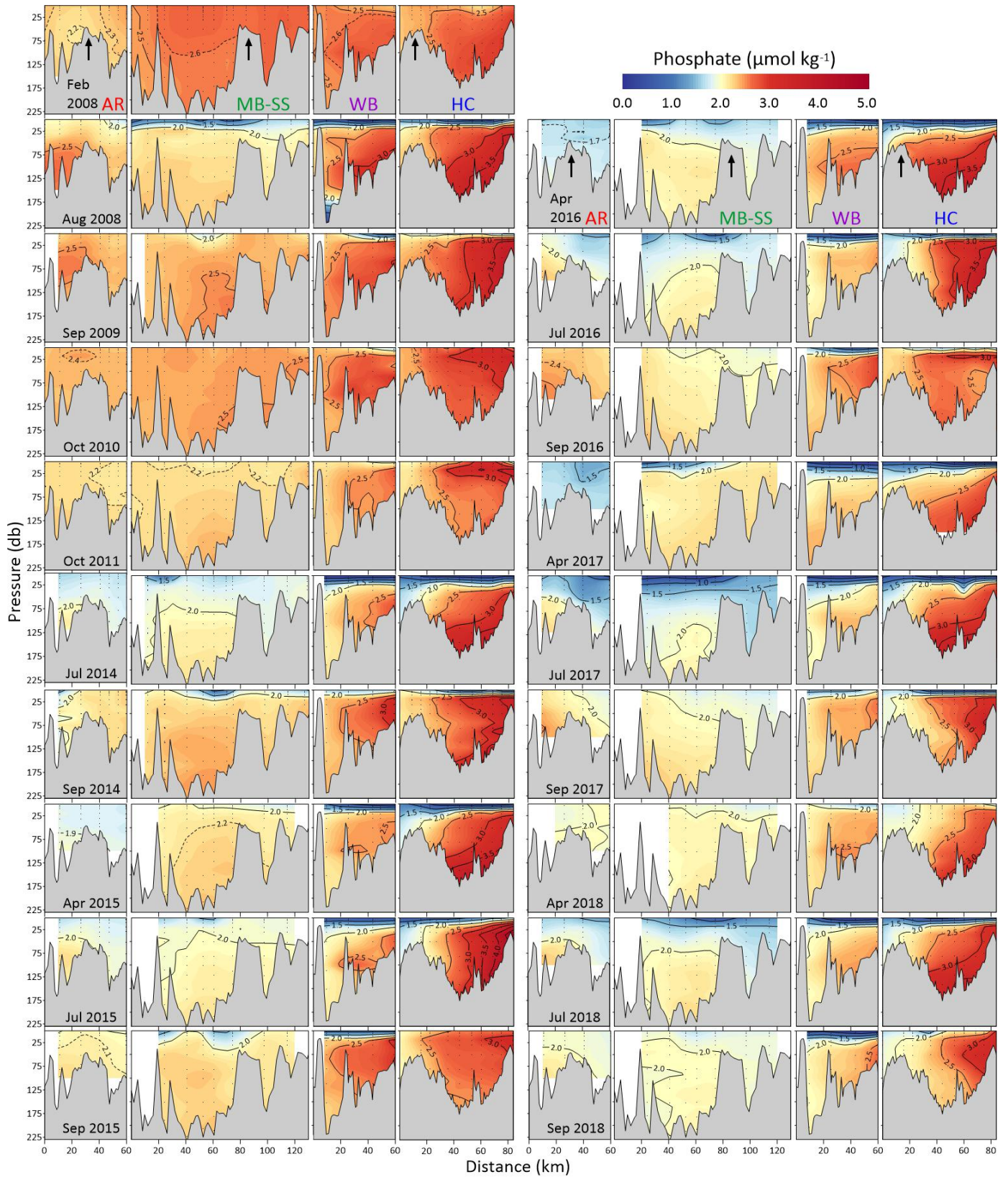
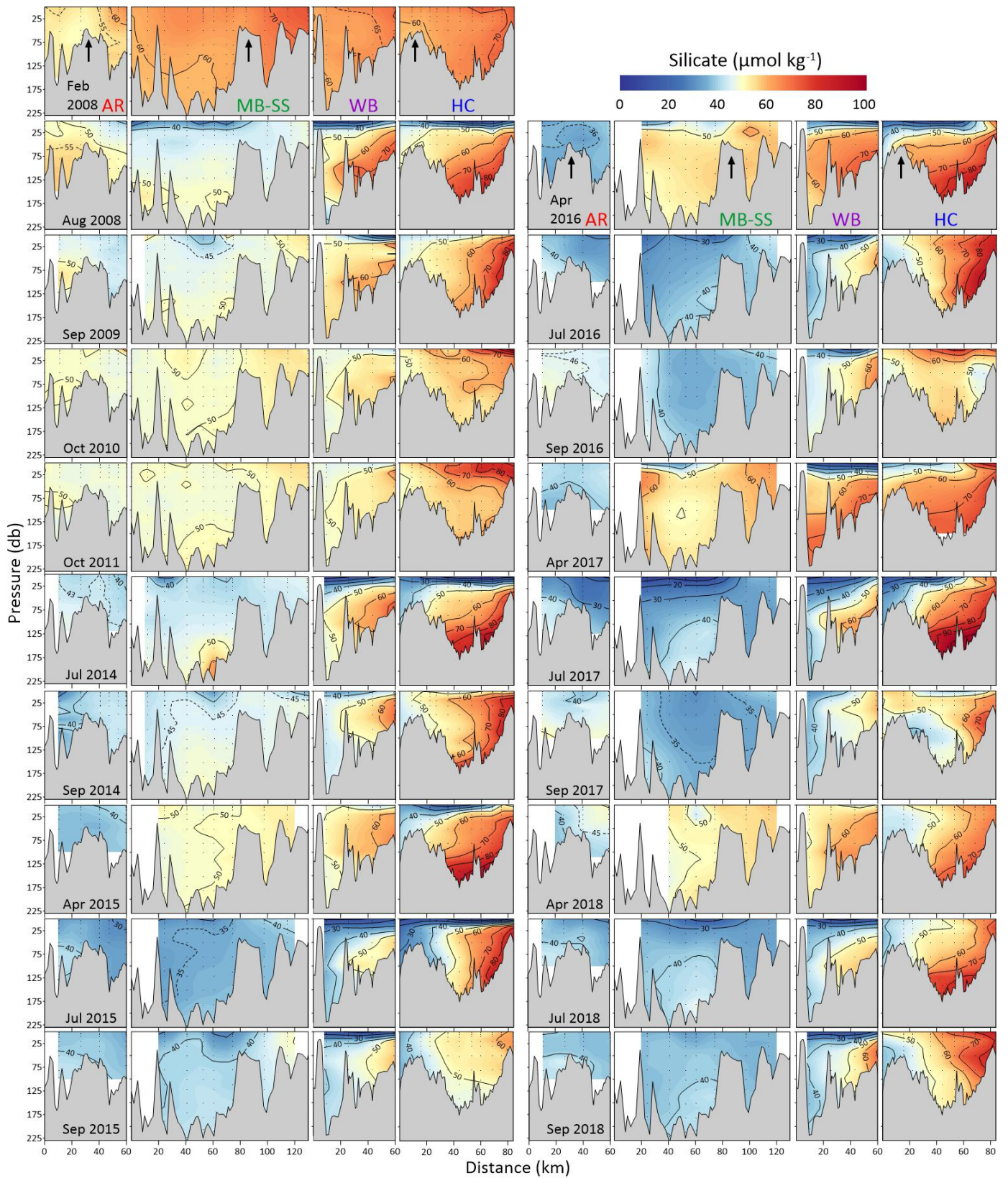


Figure S1: Depth transect plots from Sound-to-Sea cruises for phosphate, silicate, and nitrate content ($\mu\text{mol kg}^{-1}$). Figure organization is the same as in Figure 4 in the main text.



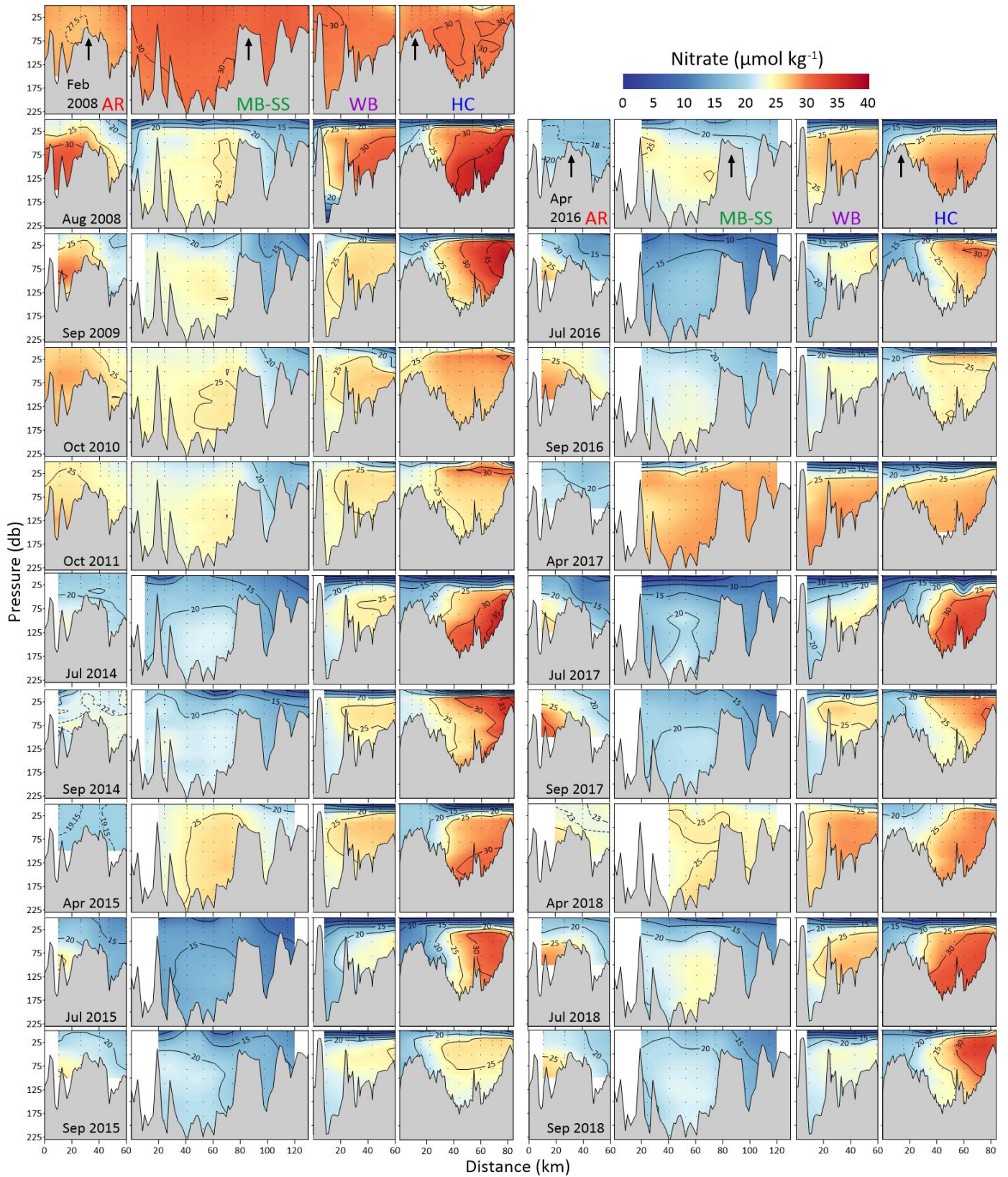
45

Figure S2: Depth transect plots from all Puget Sound cruises for phosphate content ($\mu\text{mol kg}^{-1}$). Figure organization is the same as in Figure 5 in the main text.



50

Figure S3: Depth transect plots from all Puget Sound cruises for silicate content ($\mu\text{mol kg}^{-1}$). Figure organization is the same as in Figure 5 in the main text.



55 **Figure S4:** Depth transect plots from all Puget Sound cruises for nitrate content ($\mu\text{mol kg}^{-1}$). Figure organization is the same as in Figure 5 in the main text.