



Supplement of

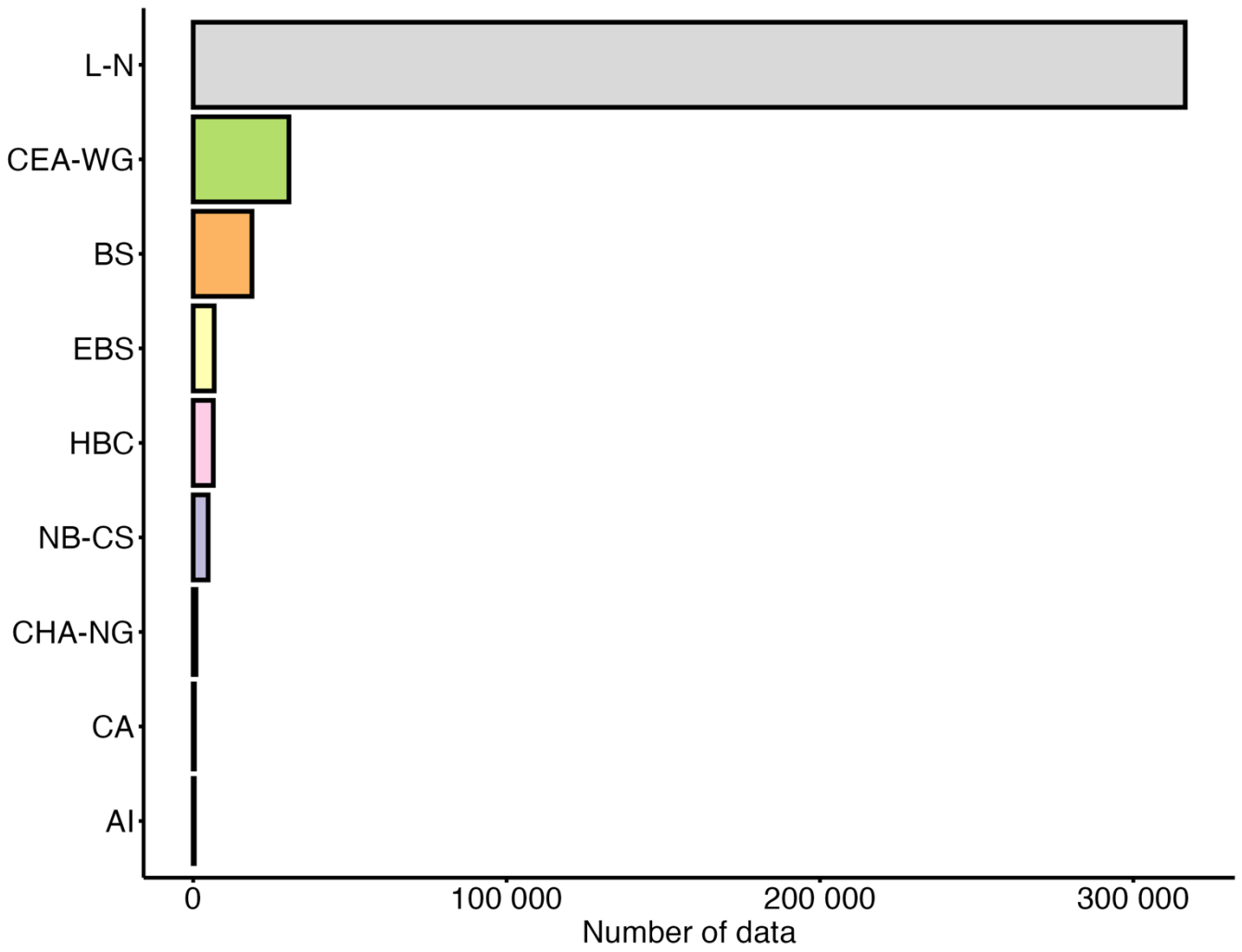
Microbial plankton occurrence database in the North American Arctic region: synthesis of recent diversity of potentially toxic and/or harmful algae

Nicolas Schiffrine et al.

Correspondence to: Nicolas Schiffrine (nicolas_schiffrine@uqar.ca)

The copyright of individual parts of the supplement might differ from the article licence.

10 **Supplementary figures**



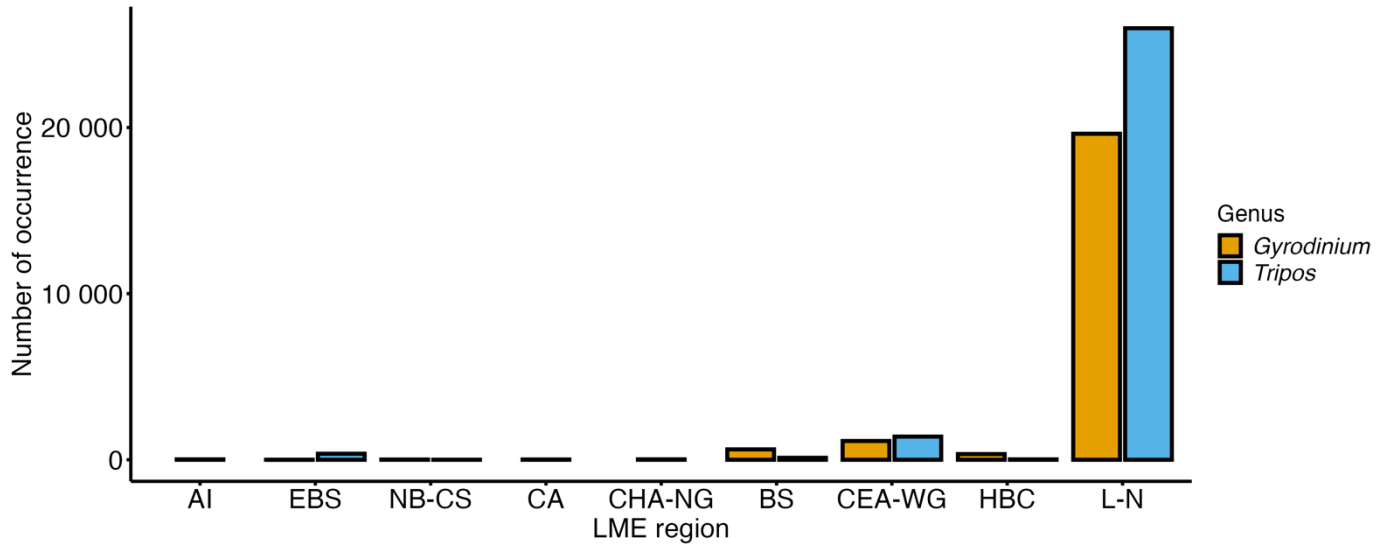
11

12 **Figure S1: Number of data samples collected for each Large Marine Ecosystem (LME) region. LME regions are labeled as follows: AI**
13 **(Aleutian Islands), EBS (East Bering Sea), NB-CS (Northern Bering—Chukchi Seas), BS (Beaufort Sea), CA (Central Arctic), CHA-NG**
14 **(Canadian High Arctic—North Greenland), CEA-WG (Canadian Eastern Arctic—West Greenland), HBC (Hudson Bay Complex) and**
15 **L-N (Labrador—Newfoundland).**

16

17

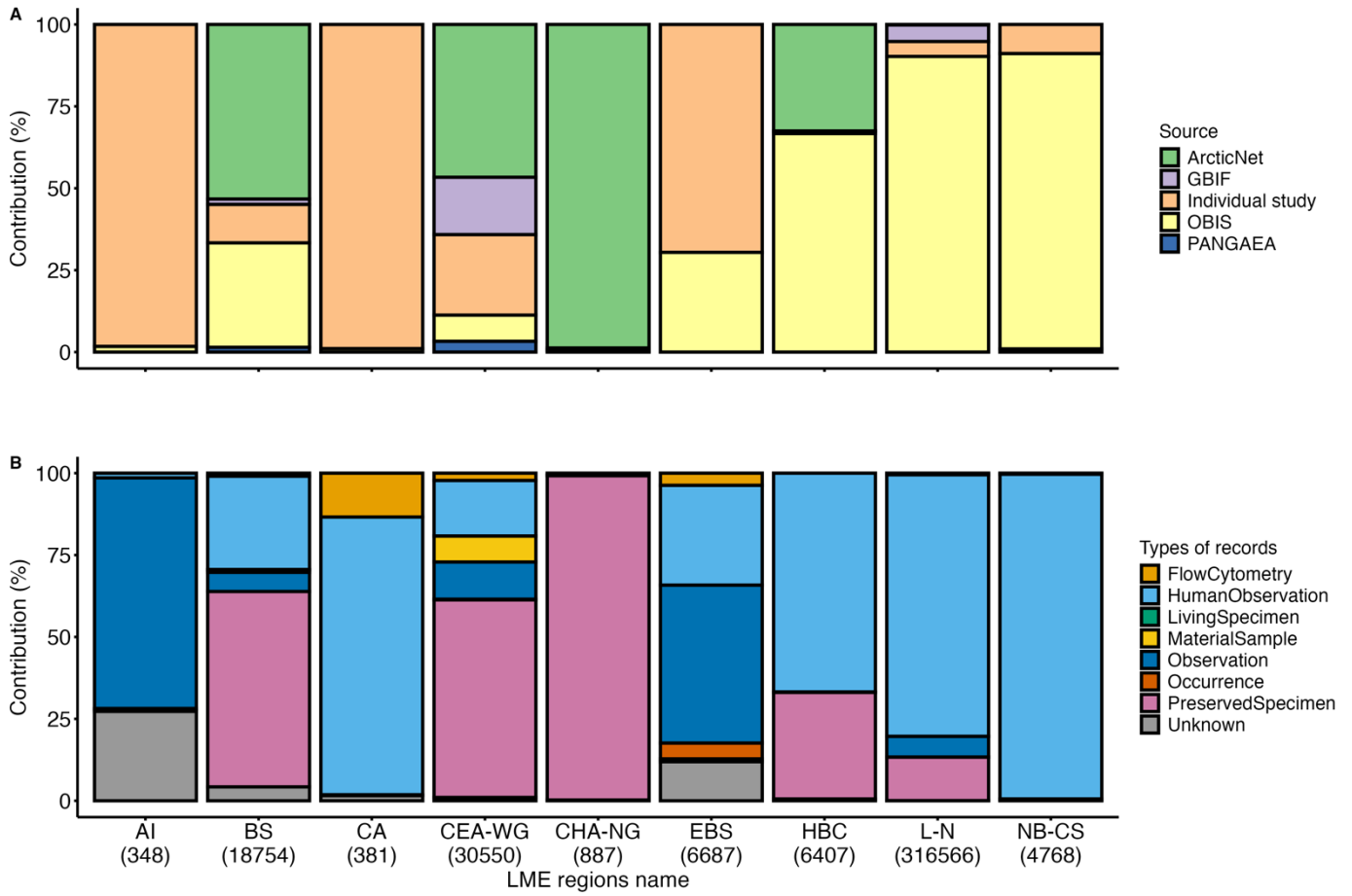
18



19

20 **Figure S2: Number of *Gyrodinium* and *Tripos* occurrence within each Large Marine Ecosystem (LME) region. LME regions are labeled**
21 **as follows: AI (Aleutian Islands), EBS (East Bering Sea), NB-CS (Northern Bering—Chukchi Seas), BS (Beaufort Sea), CA (Central**
22 **Arctic), CHA-NG (Canadian High Arctic—North Greenland), CEA-WG (Canadian Eastern Arctic—West Greenland), HBC (Hudson**
23 **Bay Complex) and L-N (Labrador—Newfoundland).**

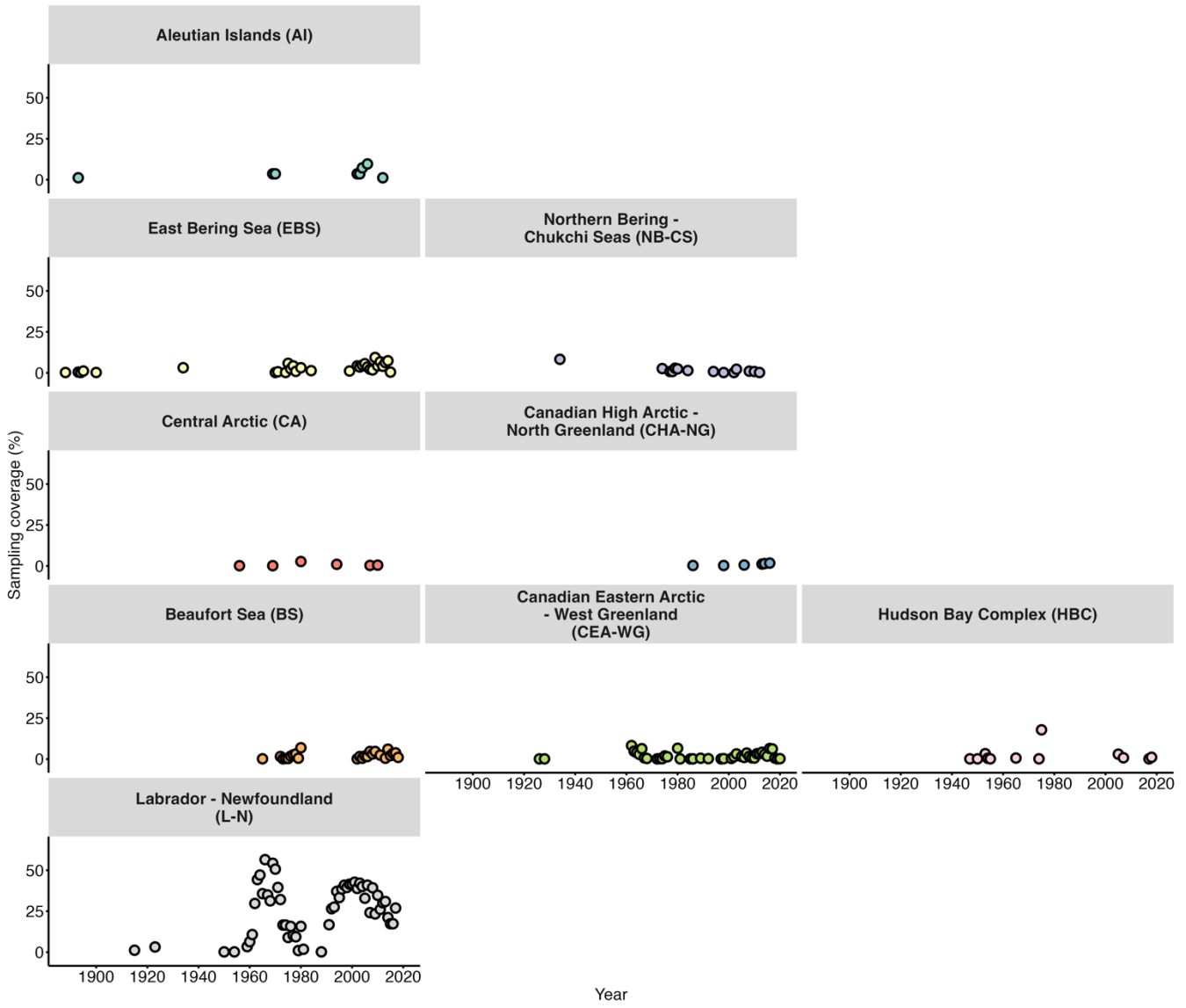
24



26

27 **Figure S3: Proportional contribution of (A) data sources (i.e., SourceArchive; see Table 1) and (B) types of records (i.e., basisOfRecords;**
 28 **see Table 1) across Large Marine Ecosystem (LME) region. The total number of records is given in parentheses next to each region**
 29 **abbreviation. LME regions are labeled as follows: AI (Aleutian Islands); EBS (East Bering Sea); NB-CS (Northern Bering—Chukchi**
 30 **Seas); BS (Beaufort Sea); CA (Central Arctic); CHA-NG (Canadian High Arctic—North Greenland); CEA-WG (Canadian Eastern**
 31 **Arctic—West Greenland); HBC (Hudson Bay Complex); L-N (Labrador—Newfoundland).**

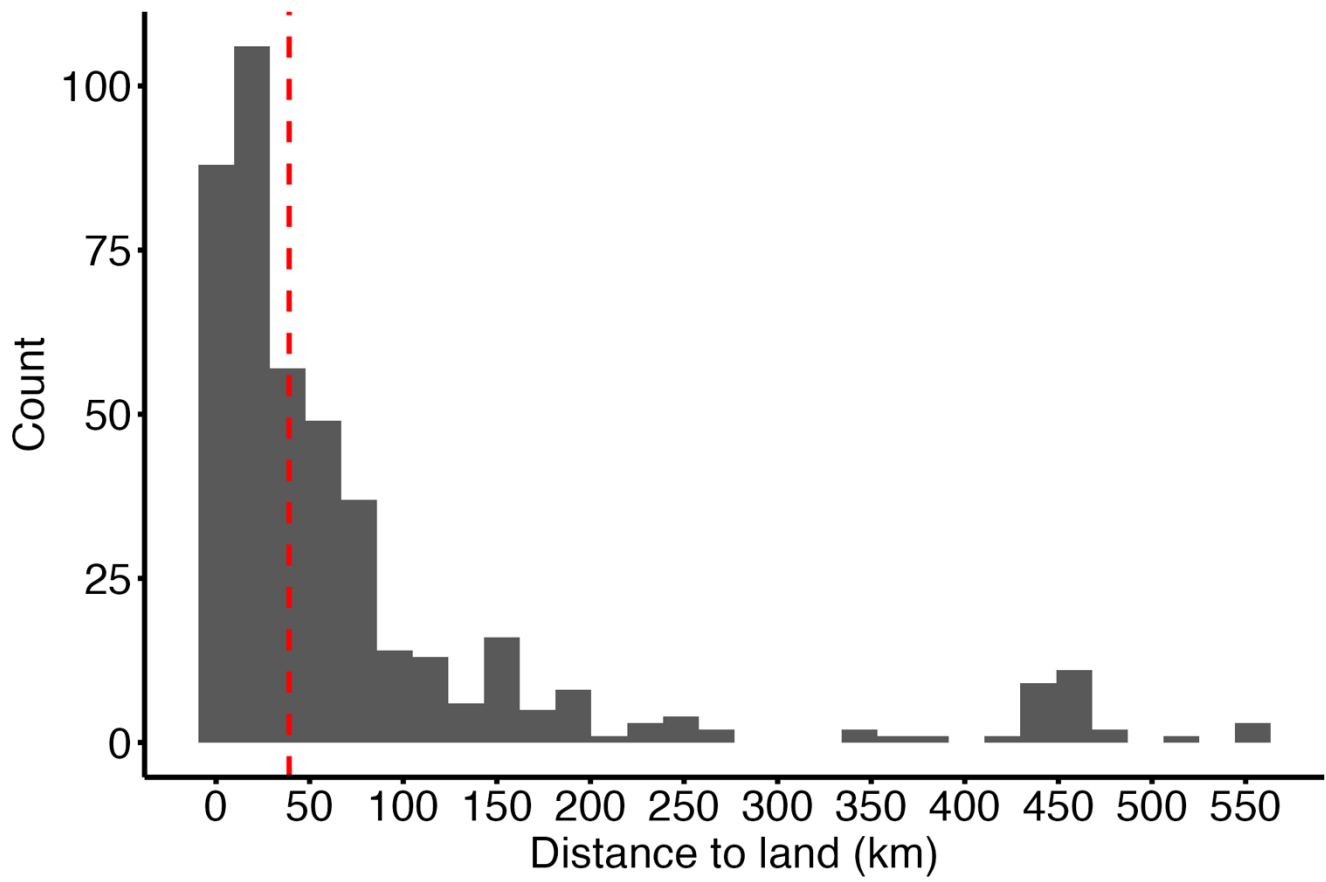
32



34

35 **Figure S4: Temporal variation in sampling coverage (%) for each Large Marine Ecosystem (LME) region. LME region abbreviations**
 36 **are in parentheses.**

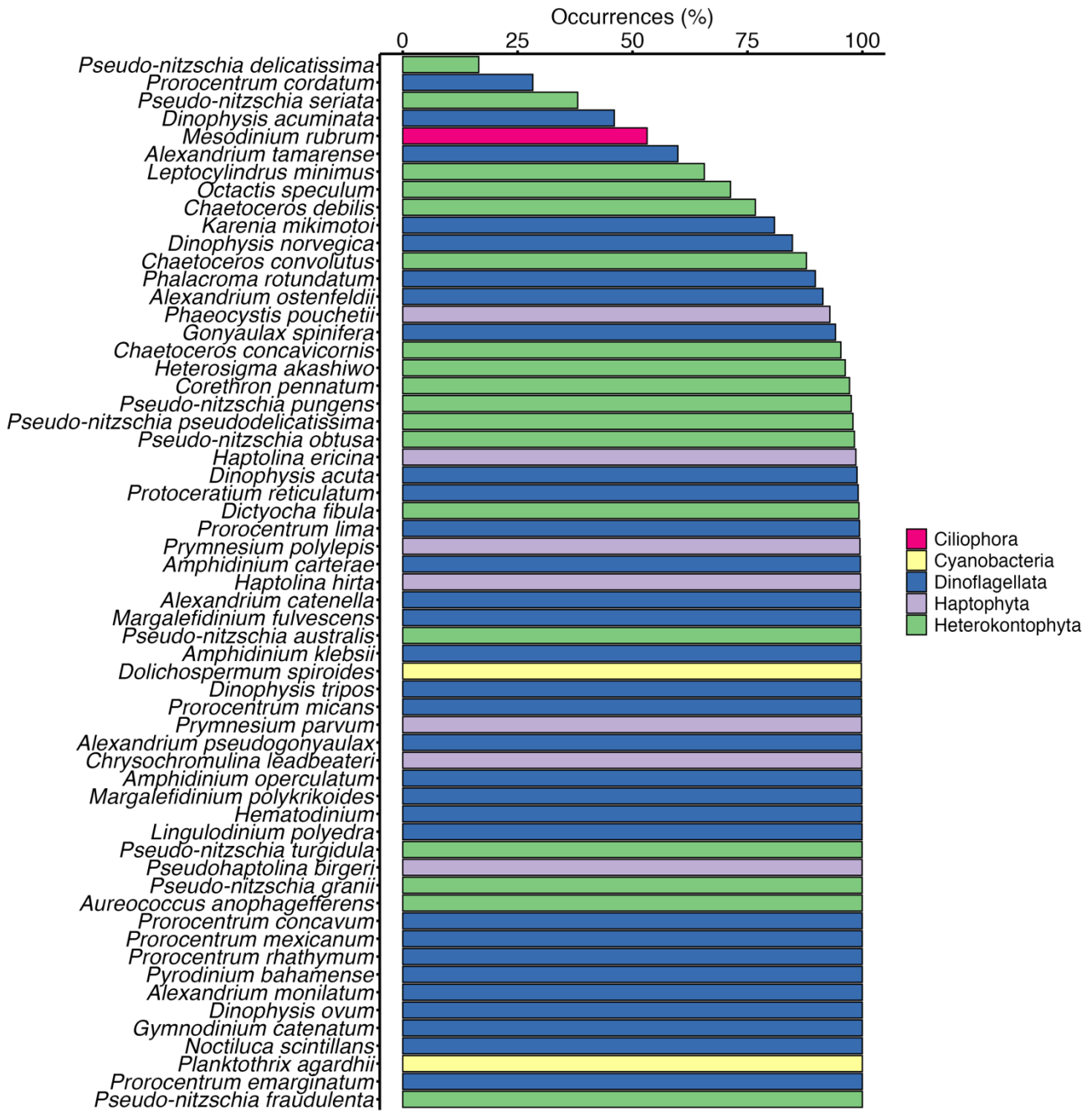
37



38

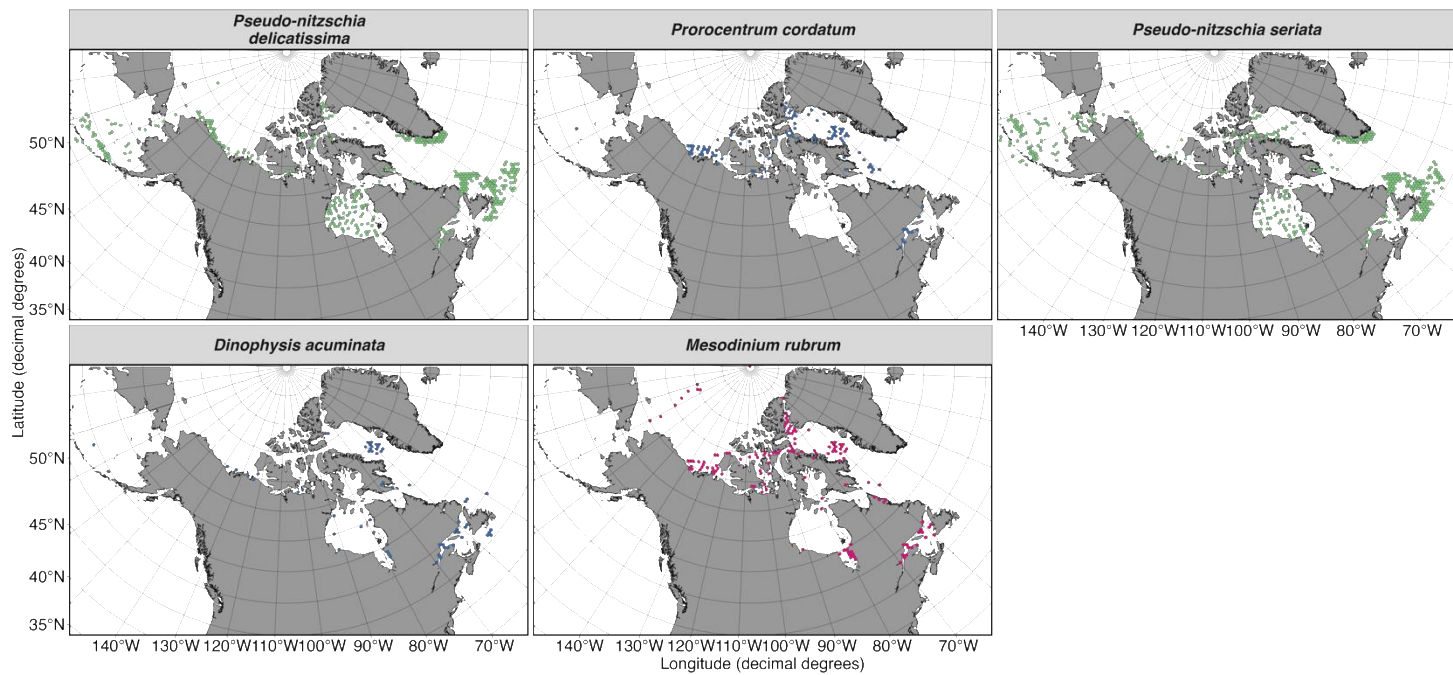
39 **Figure S5: Histogram of the distribution of distances to land (in kilometers) for stations sampled in the Beaufort Sea (BS) region. The**
40 **red dashed line represents the median.**

41



42

43 Figure S6: Cumulative occurrences (%) of HA taxa.



44

45

46 **Figure S7: Geographic distribution of the five most common HA species**