



*Supplement of*

## **CREST: a Climate Data Record of Stratospheric Aerosols**

**Viktorija F. Sofieva et al.**

*Correspondence to:* Viktorija F. Sofieva ([viktorija.sofieva@fmi.fi](mailto:viktorija.sofieva@fmi.fi))

The copyright of individual parts of the supplement might differ from the article licence.

## Illustrations of original, adjusted and merged time series of stratospheric aerosol profiles

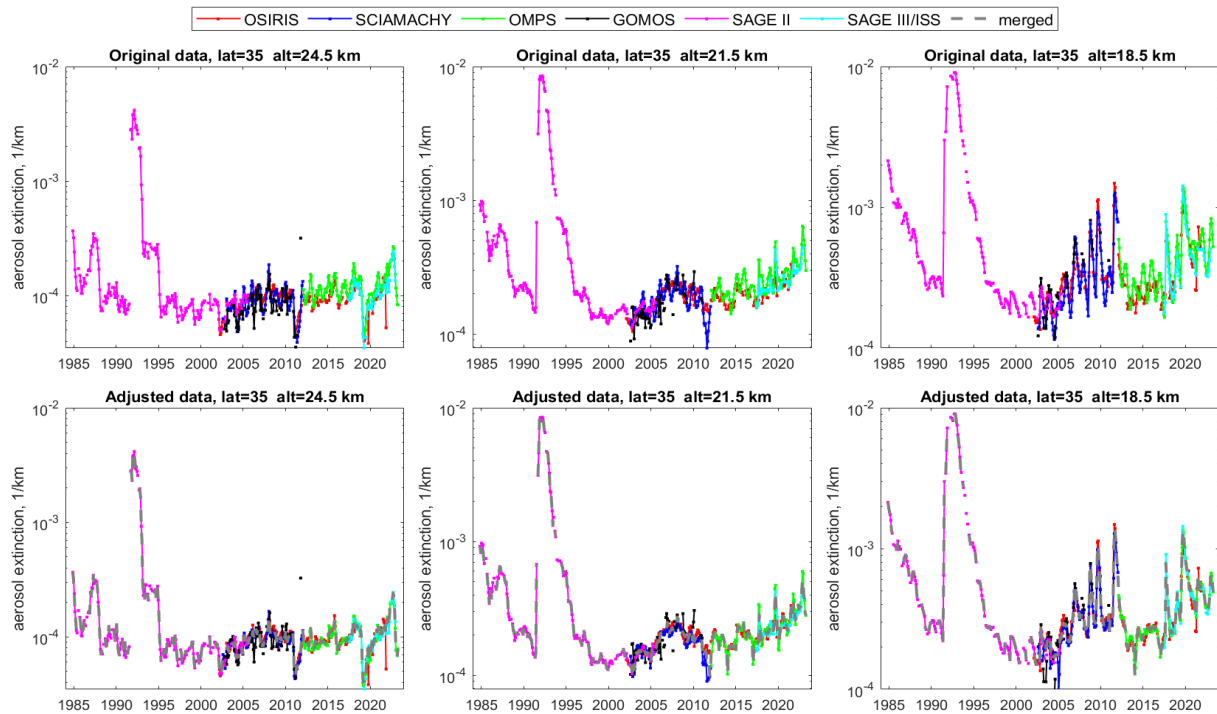


Figure S1. Aerosol extinction coefficient (1/km) at several altitudes in the subtropics (30°-40° N). Colored lines correspond to aerosol records from individual instruments. Top panel: original data, bottom panel: adjusted data. The merged aerosol extinction coefficient is shown by grey line in the bottom panel.

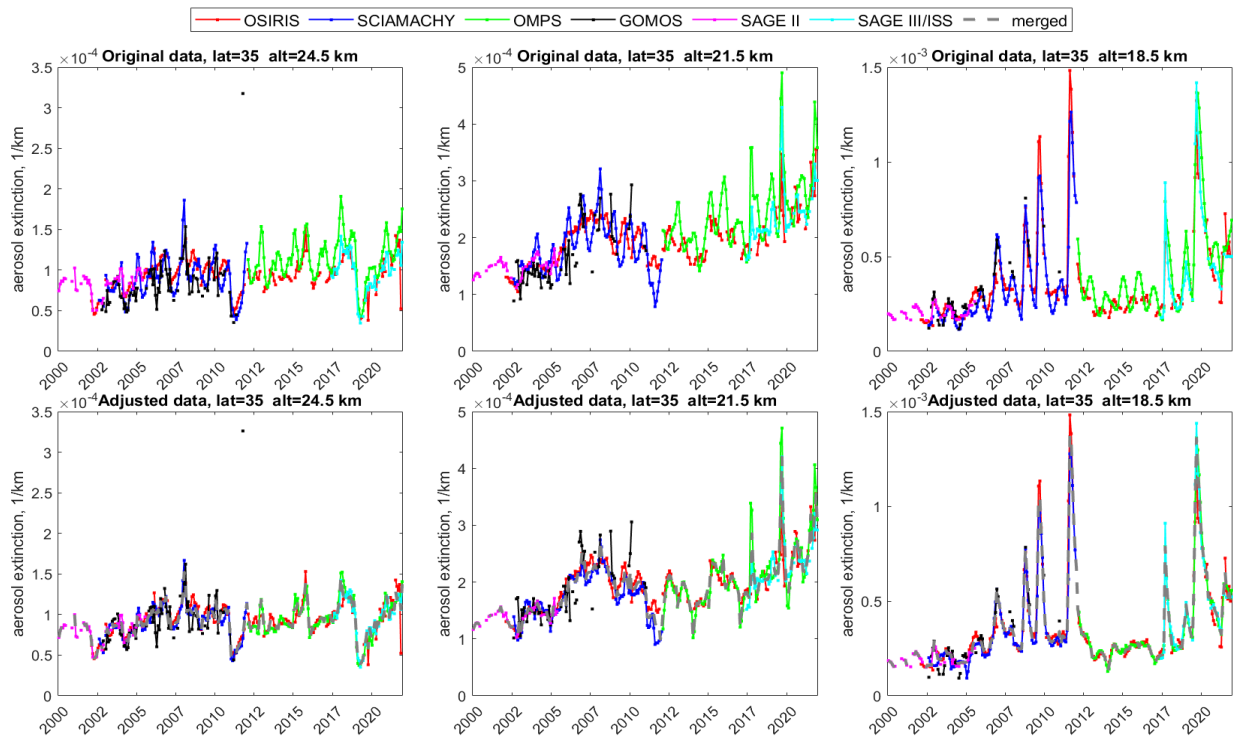


Figure S2. As Figure S1, but with the zoom on years 2000–2021.

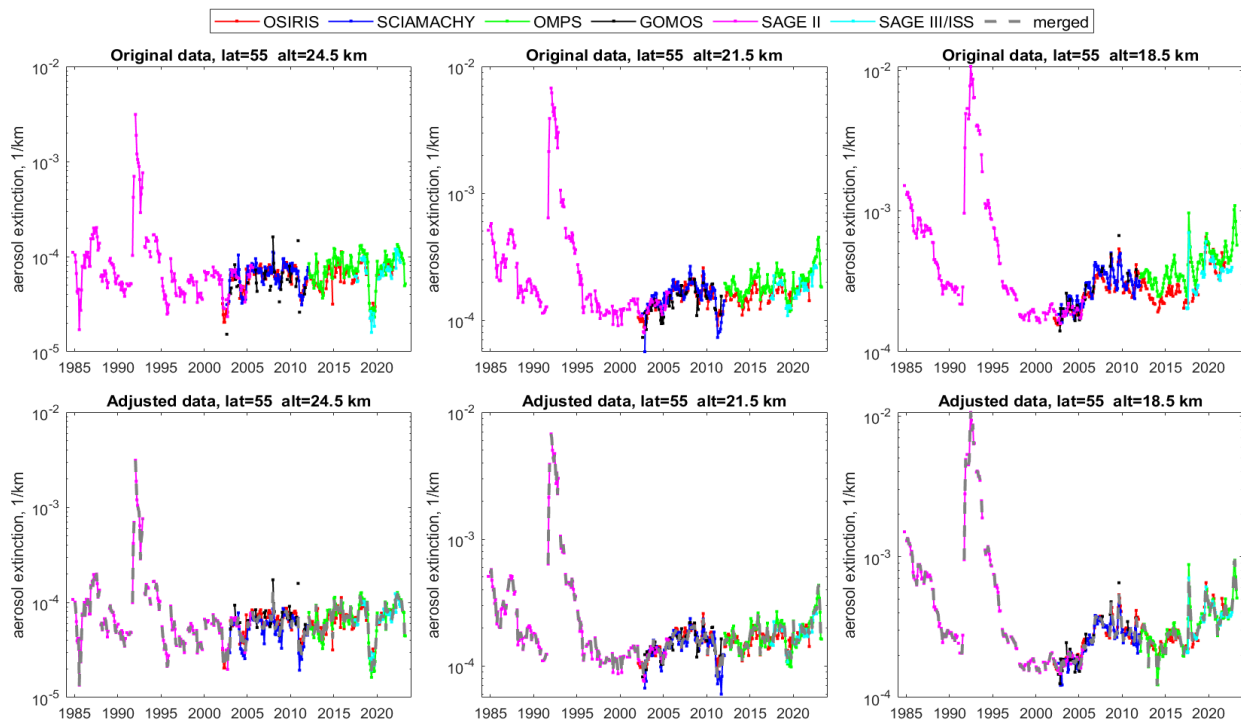


Figure S3. As Figure S1, but for NH mid-latitudes (50°–60° N).

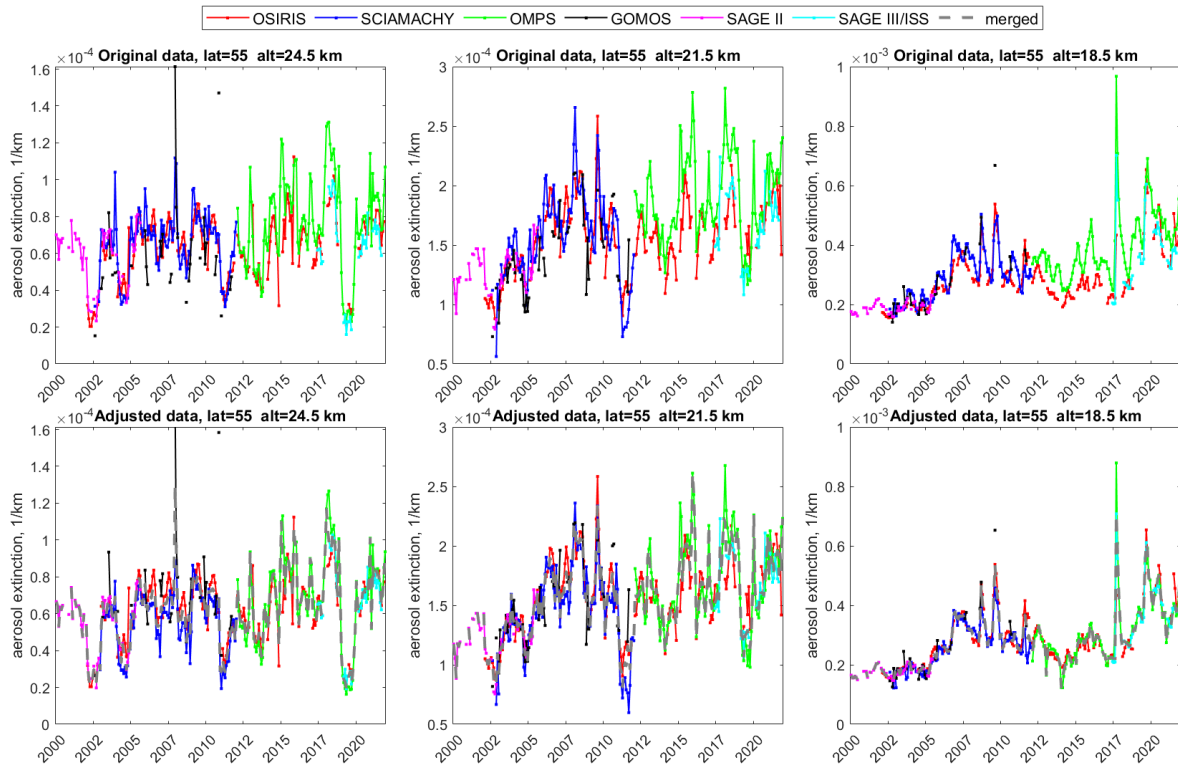


Figure S4. As Figure S3, but with the zoom on years 2000-2021