



*Supplement of*

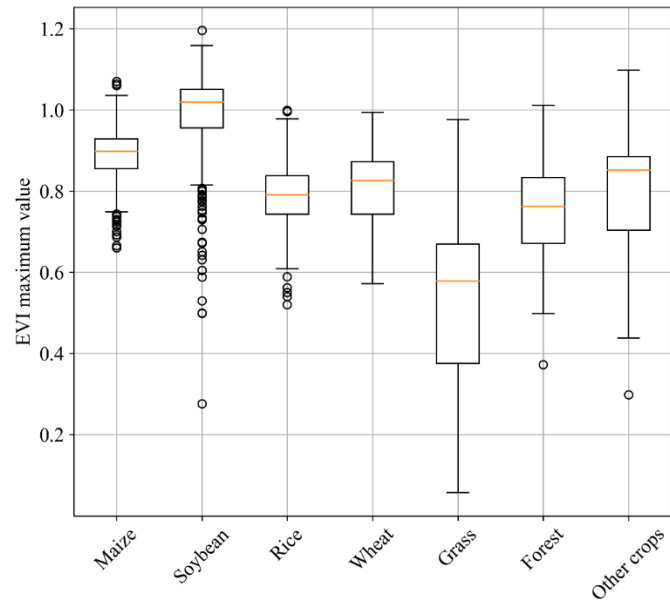
## **ChinaSoyArea10m: a dataset of soybean-planting areas with a spatial resolution of 10 m across China from 2017 to 2021**

**Qinghang Mei et al.**

*Correspondence to:* Zhao Zhang (zhangzhao@bnu.edu.cn)

The copyright of individual parts of the supplement might differ from the article licence.

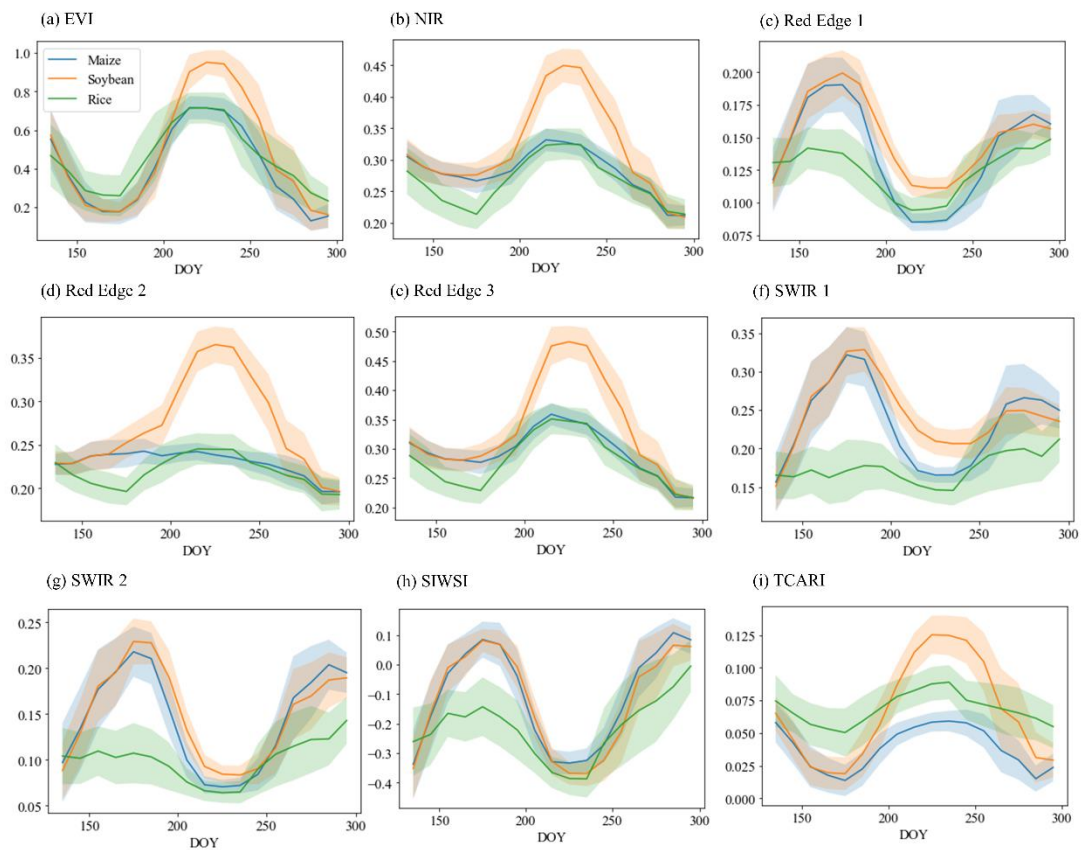
8 **Supplementary Figures**



9

10 **Figure S1. Box plot of the EVI maximum in 2019 based on all ground samples.**

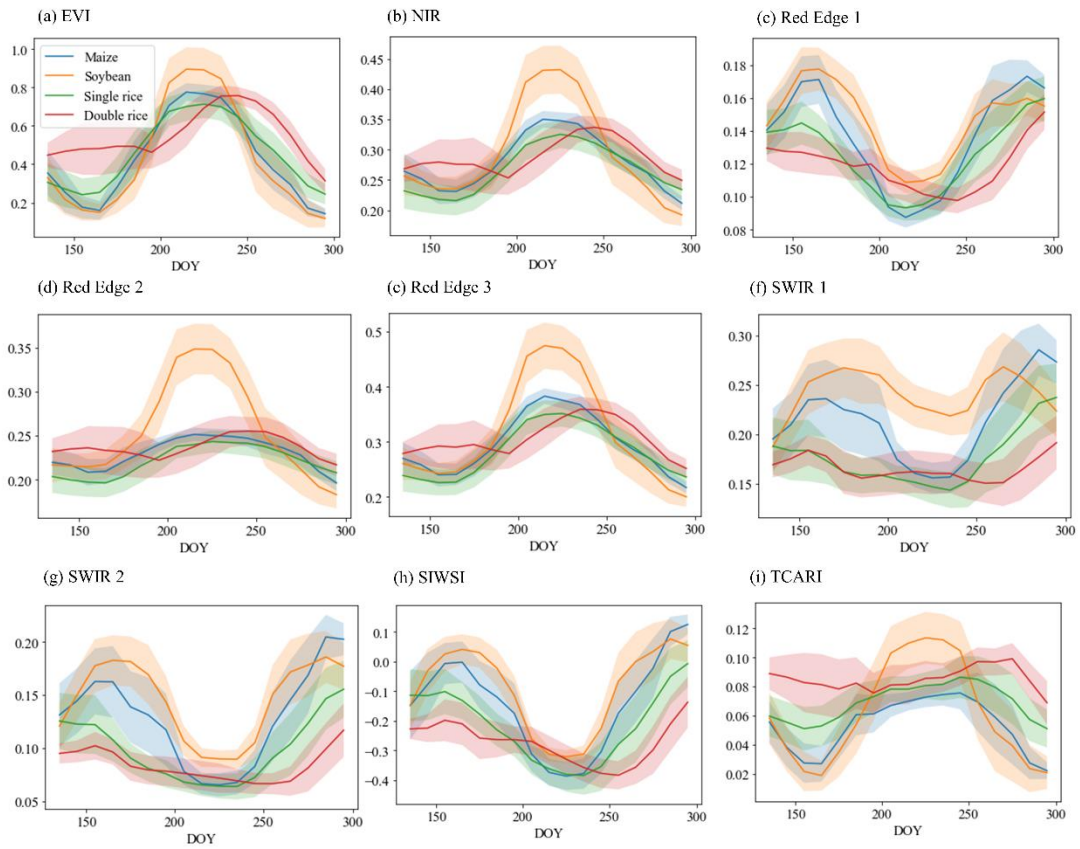
11



12

13 **Figure S2. Temporal profiles of (a-i) for major crops in Zone II.**

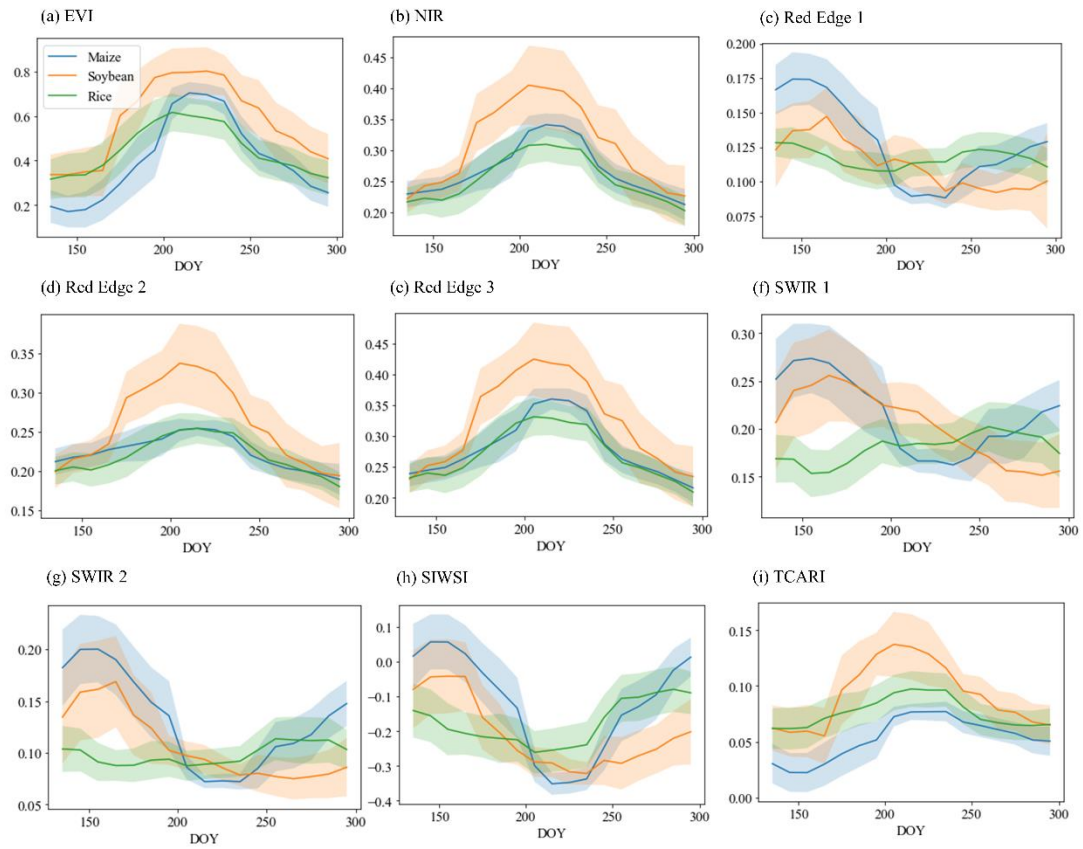
14



15

16 **Figure S3. Temporal profiles of (a-i) for major crops in Zone III.**

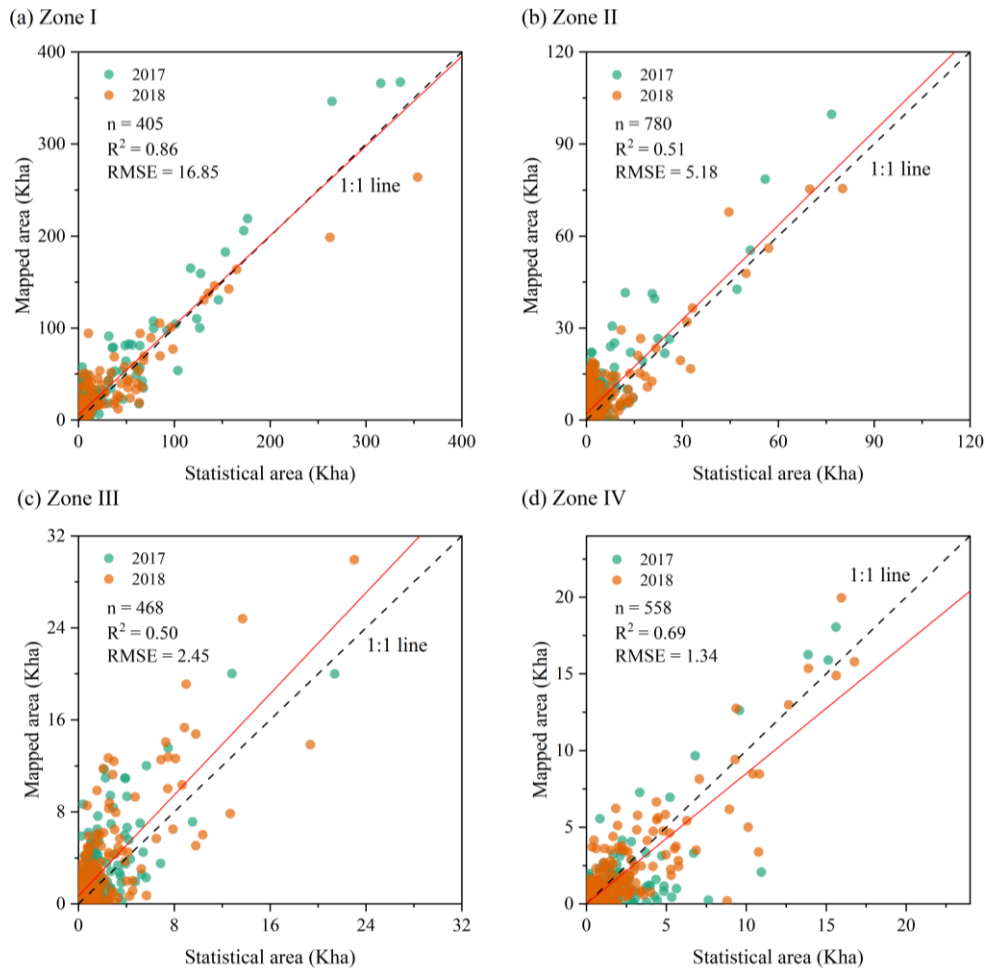
17



18

19 **Figure S4. Temporal profiles of (a-i) for major crops in Zone IV.**

20



21

22 **Figure S5. Comparison of soybean areas with county-level statistics in (a) Zone I, (b) Zone II, (c) Zone III,**

23 **and (d) Zone IV in 2017 and 2018.**

24

25 **Supplementary Table**

26

**Table S1. Confusion matrix of the soybean maps in each sub-zone in 2019.**

	Reference	Map		Producer's Accuracy	User's Accuracy	F1 Score	Overall Accuracy
		Soybean	Non-Soybean				
I	Soybean	922	122	88.31%	81.09%	0.85	87.12%
	Non-Soybean	215	1358	86.33%	91.76%	0.89	
II	Soybean	233	74	75.90%	86.30%	0.81	83.58%
	Non-Soybean	37	332	89.97%	81.77%	0.86	
III	Soybean	101	26	79.53%	98.06%	0.88	90.67%
	Non-Soybean	2	171	98.84%	86.80%	0.92	
IV	Soybean	23	13	63.89%	92.00%	0.75	87.18%
	Non-Soybean	2	79	97.53%	85.87%	0.91	

27