



Supplement of

Predictive mapping of organic carbon stocks in surficial sediments of the Canadian continental margin

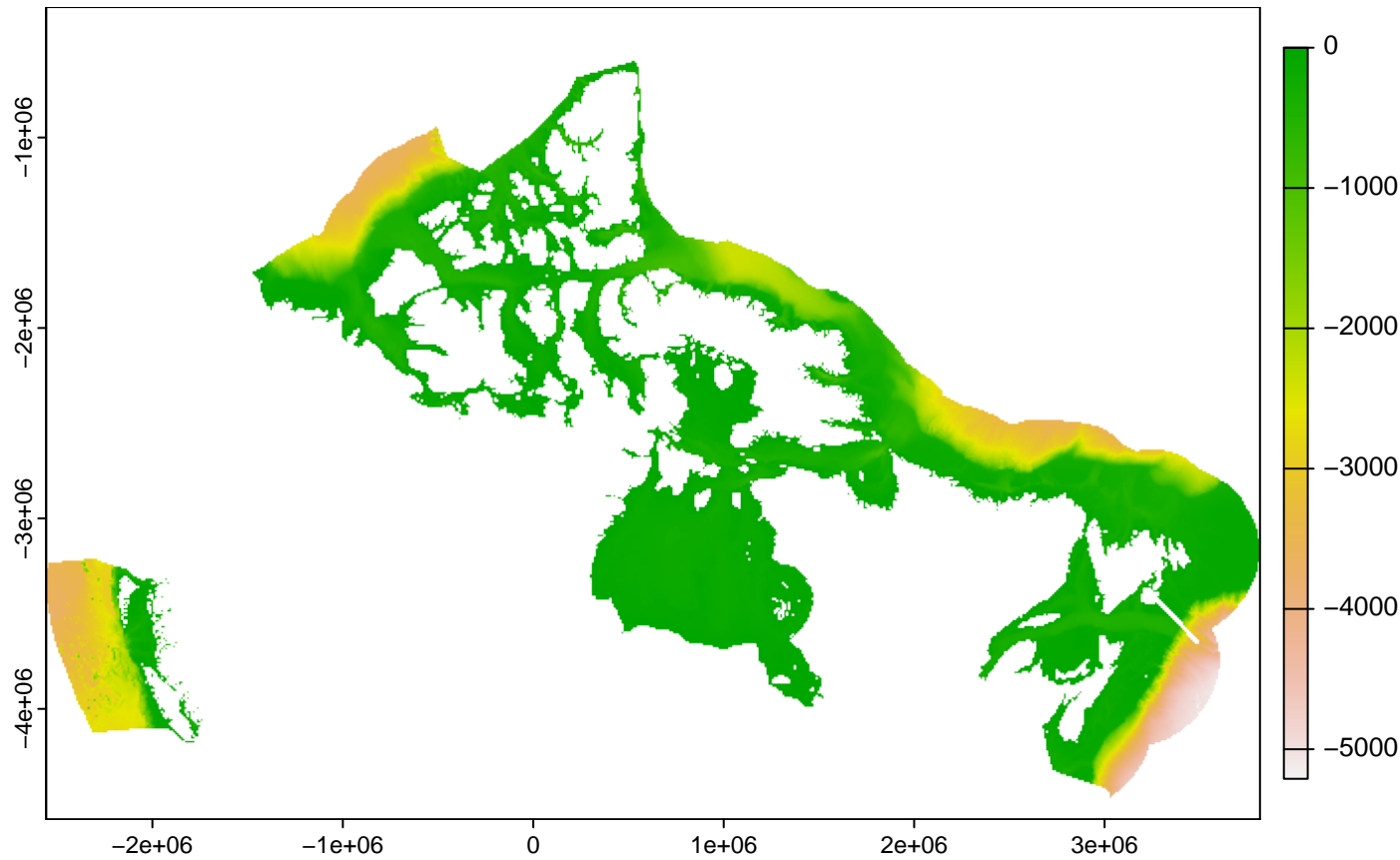
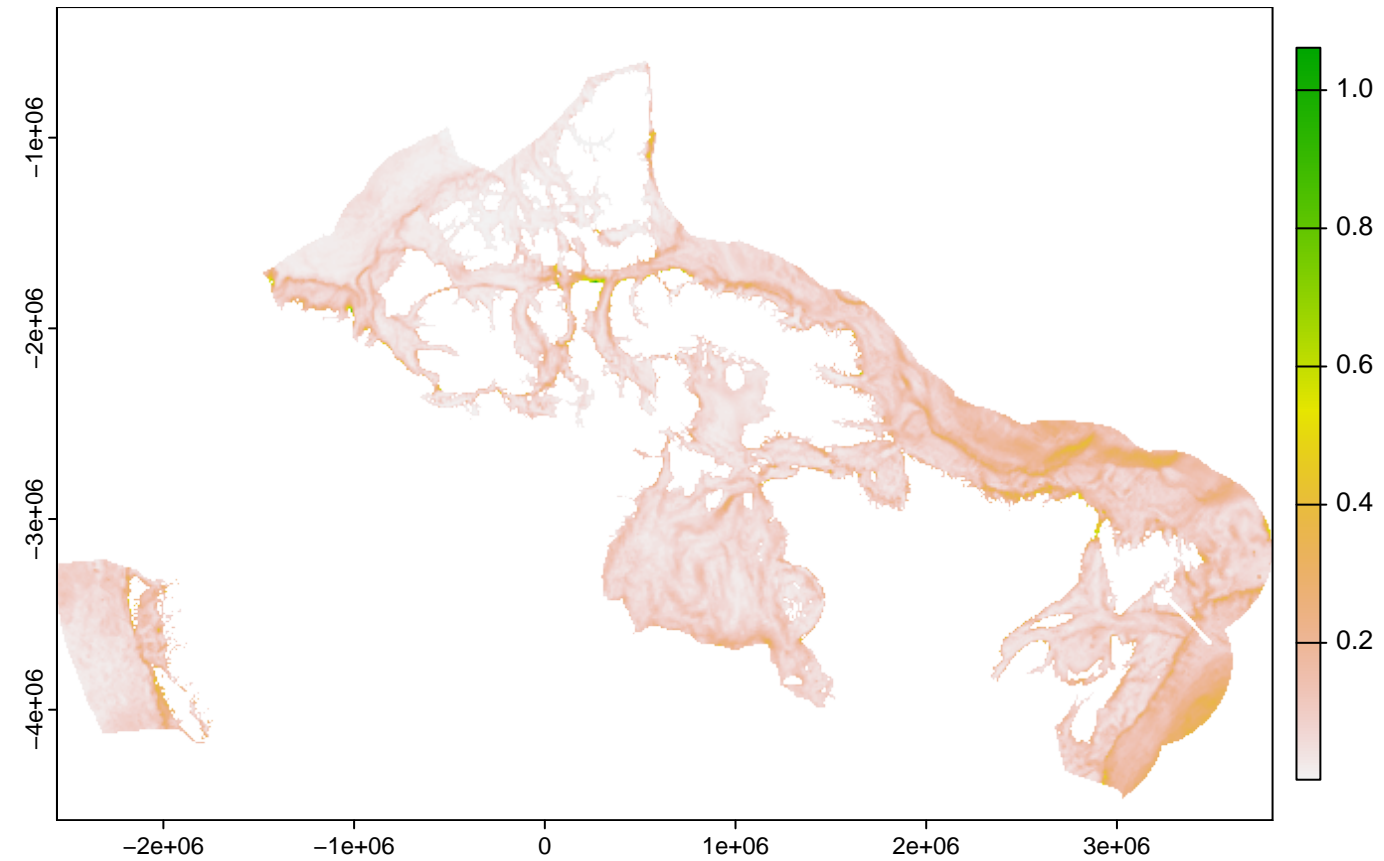
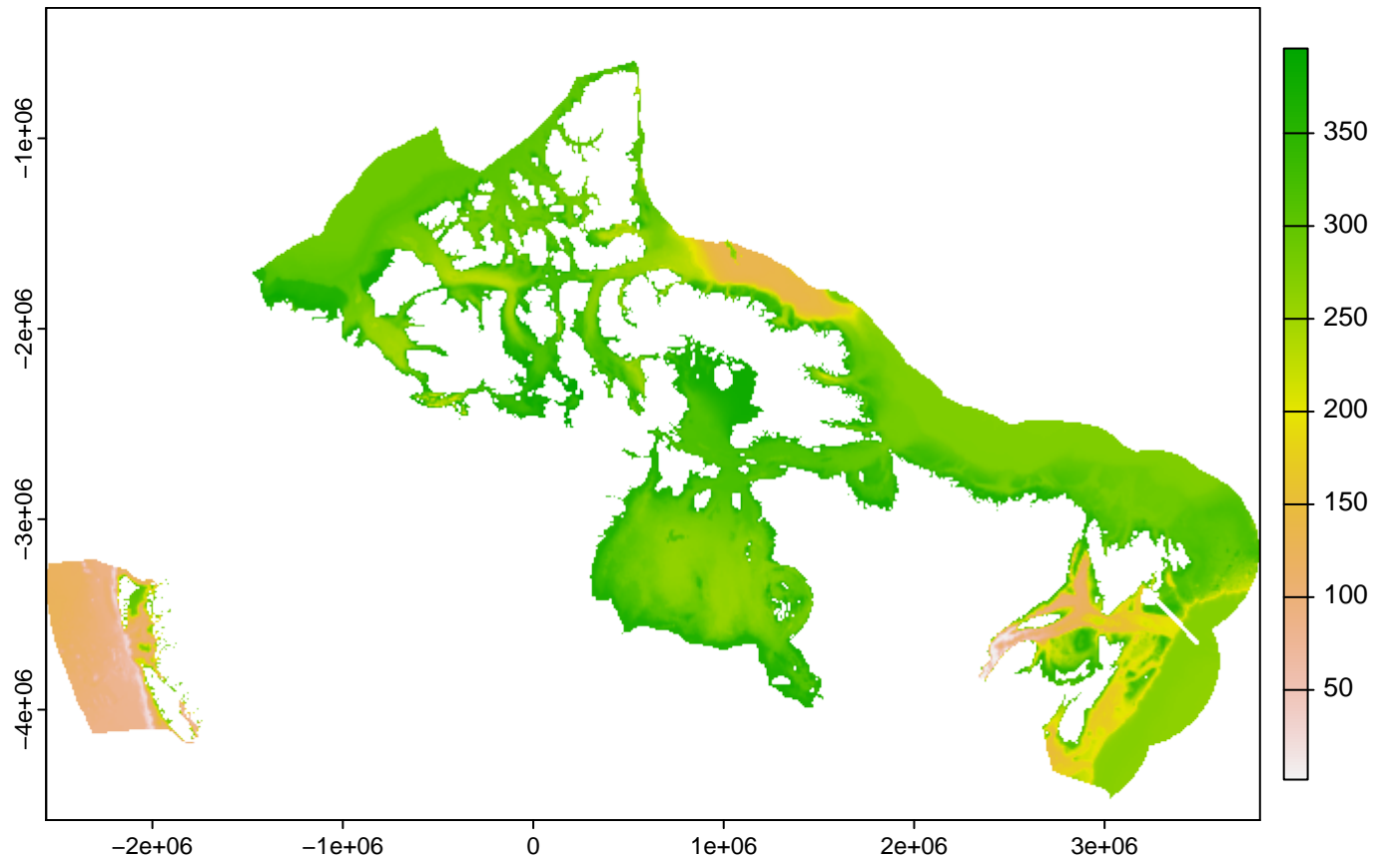
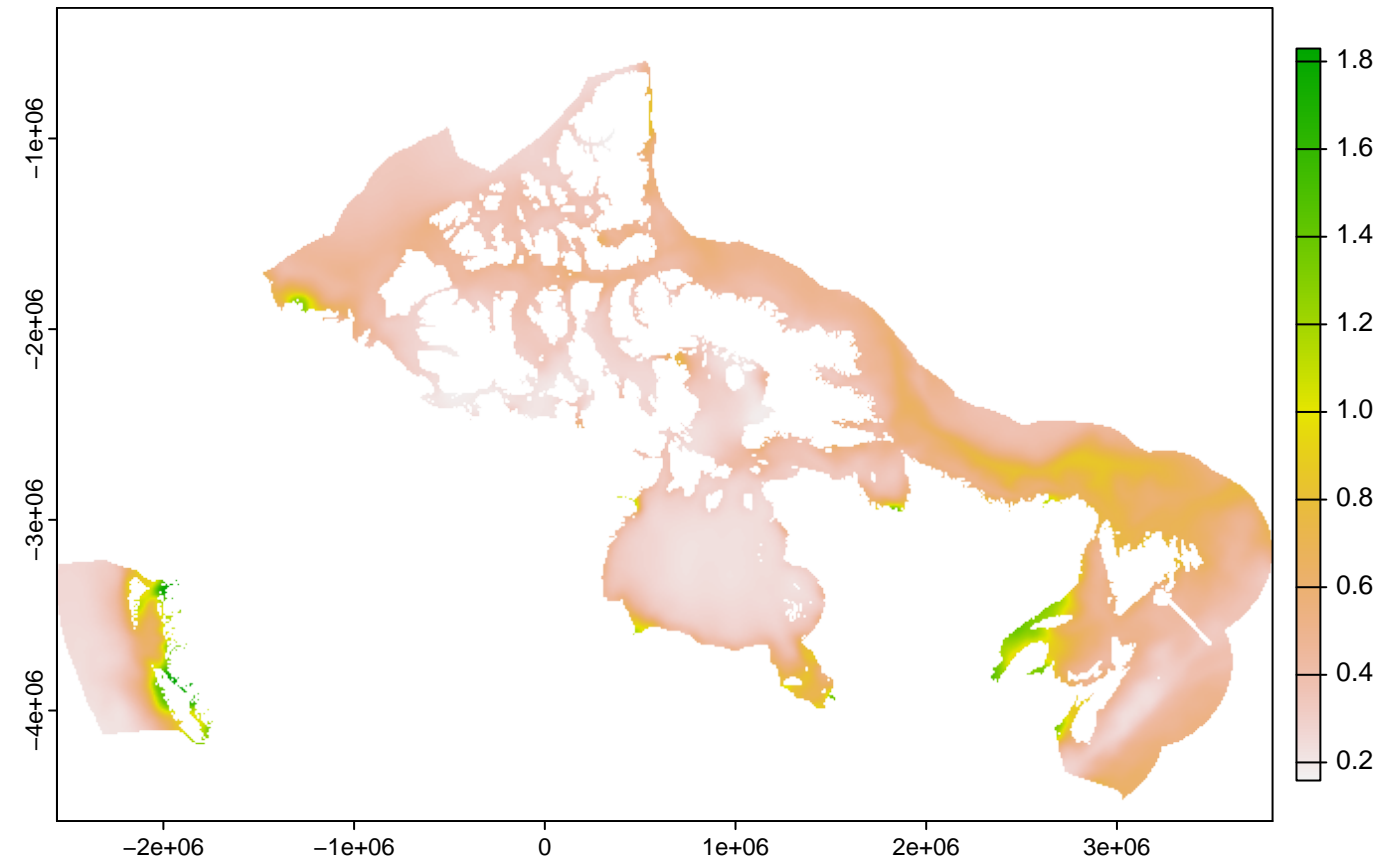
Graham Epstein et al.

Correspondence to: Graham Epstein (grahamepstein@uvic.ca)

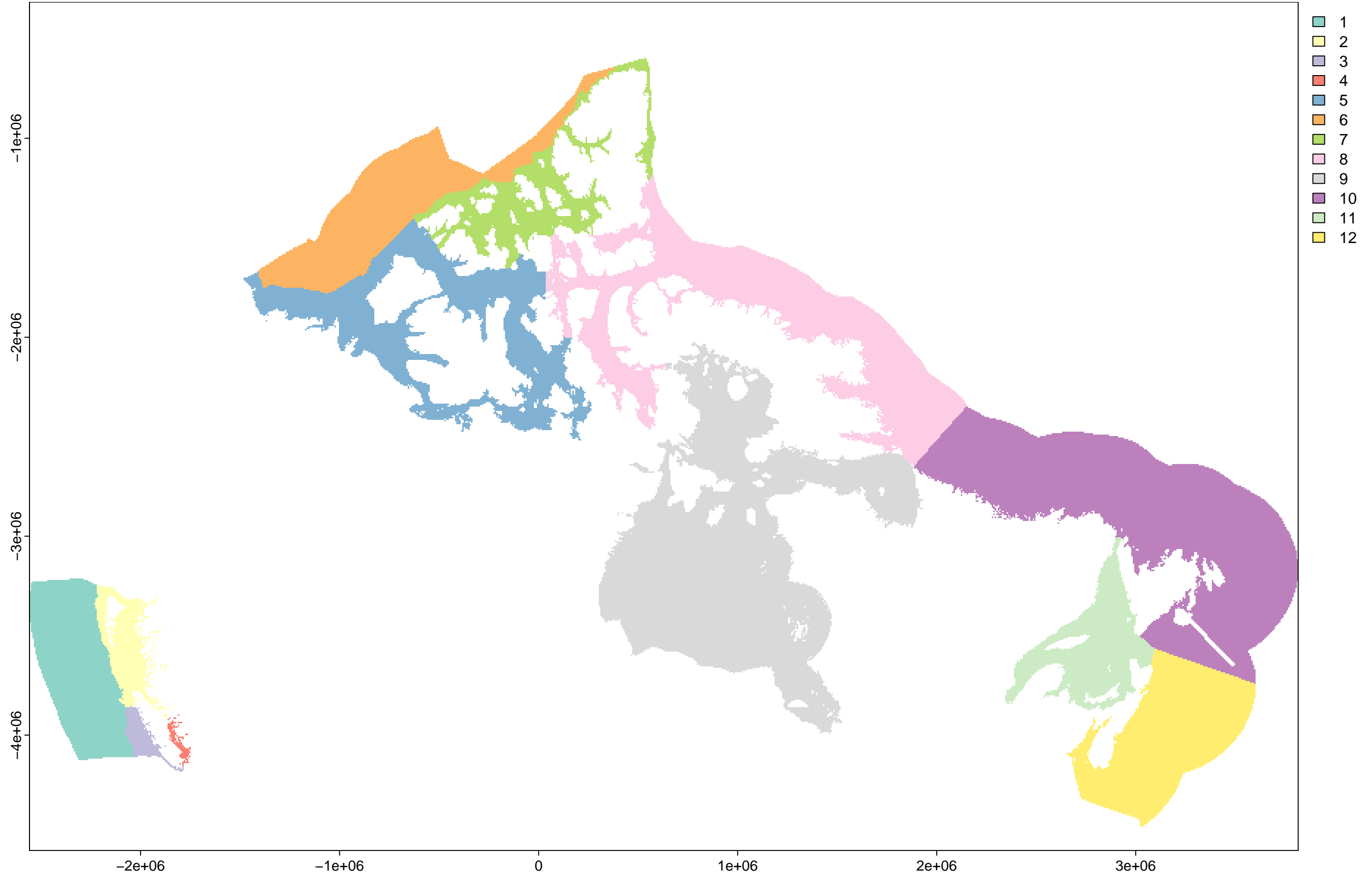
The copyright of individual parts of the supplement might differ from the article licence.

Description

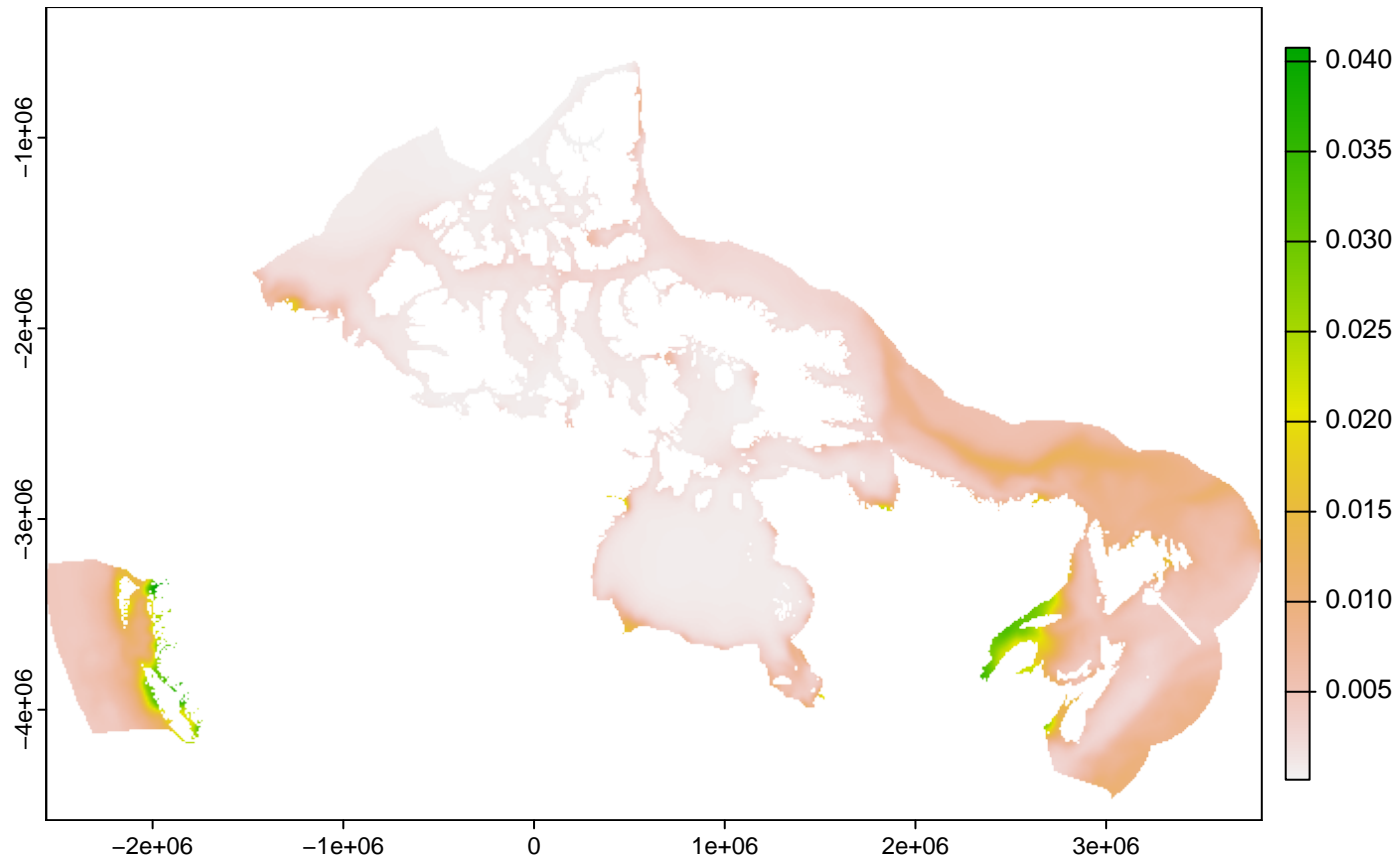
The following plots show the final set of predictor variables available for predictive mapping of seafloor sediments across Canada. All plots are shown with the x-axis indicating the Longitude and y-axis the Latitude within the co-ordinate reference system EPSG:3573 WGS 84 - North Pole Lambert Azimuthal Equal Area Canada. The final resolution of all raster layers is 200 m x 200 m; however, they cannot be visually reproduced at this resolution at their full extent, therefore the display of the data inherently includes some aggregation. Plots are predominantly shown with a continuous colour scale from low values in grey and high values in green. Bioregion is shown as 12 discrete categories (see Table 2 of main text); BPI (benthic position index), VRM (vector ruggedness measure) and curvature measures are shown in quantile groups to better visualise spatial contrasts in the data. For some of the plots shown in a continuous colour scale, the delineation between lower values may not be visually apparent due to highly right skewed data. For further information on the methods and data sources see Table 1 and Sections 2.2 and 2.3 of the main text.

Bathymetry (m)**Maximum current velocity – seafloor (m/s)****Dissolved oxygen – seafloor (mol/m³)****Chlorophyll concentration – surface (mg/m³)**

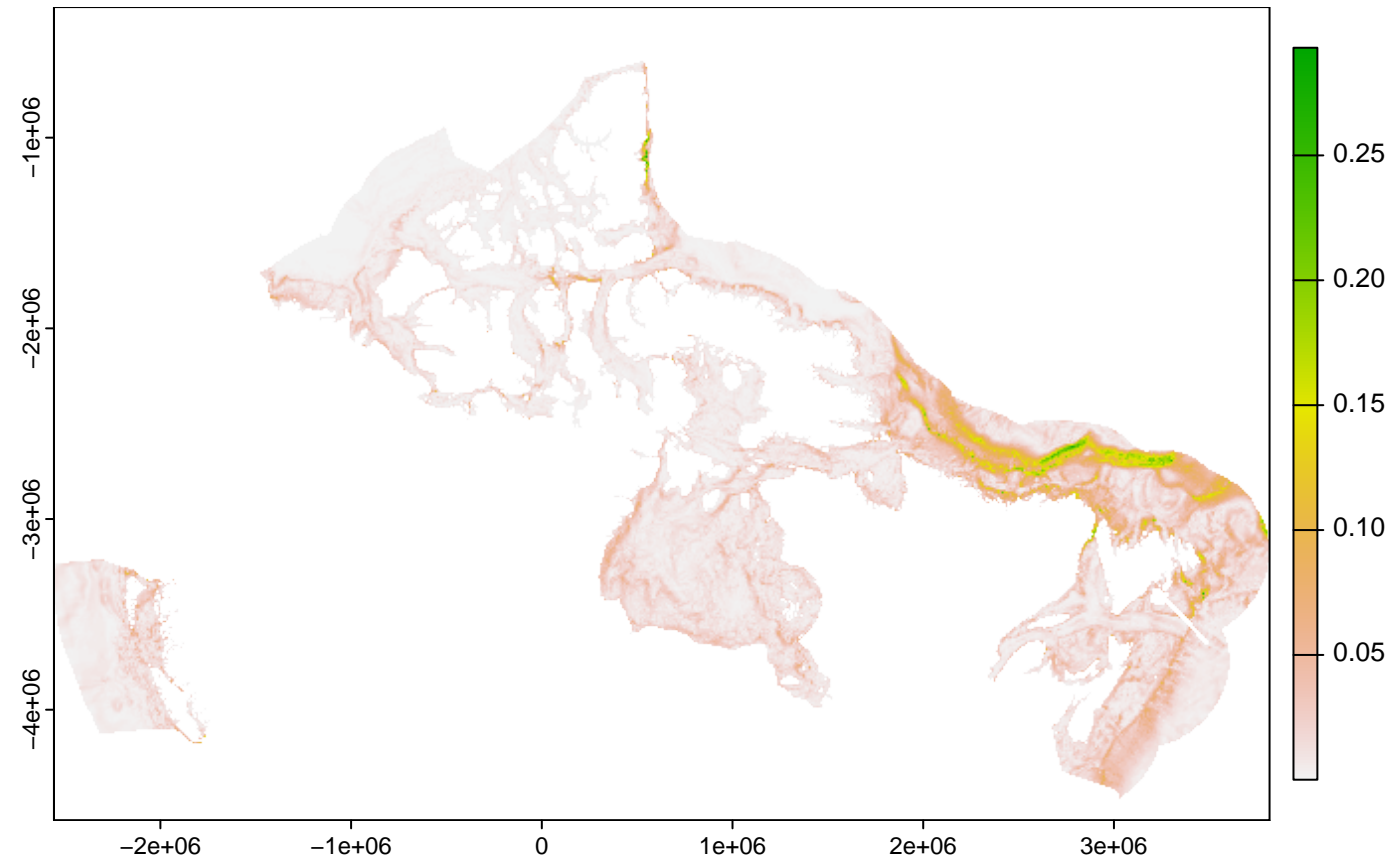
Bioregion



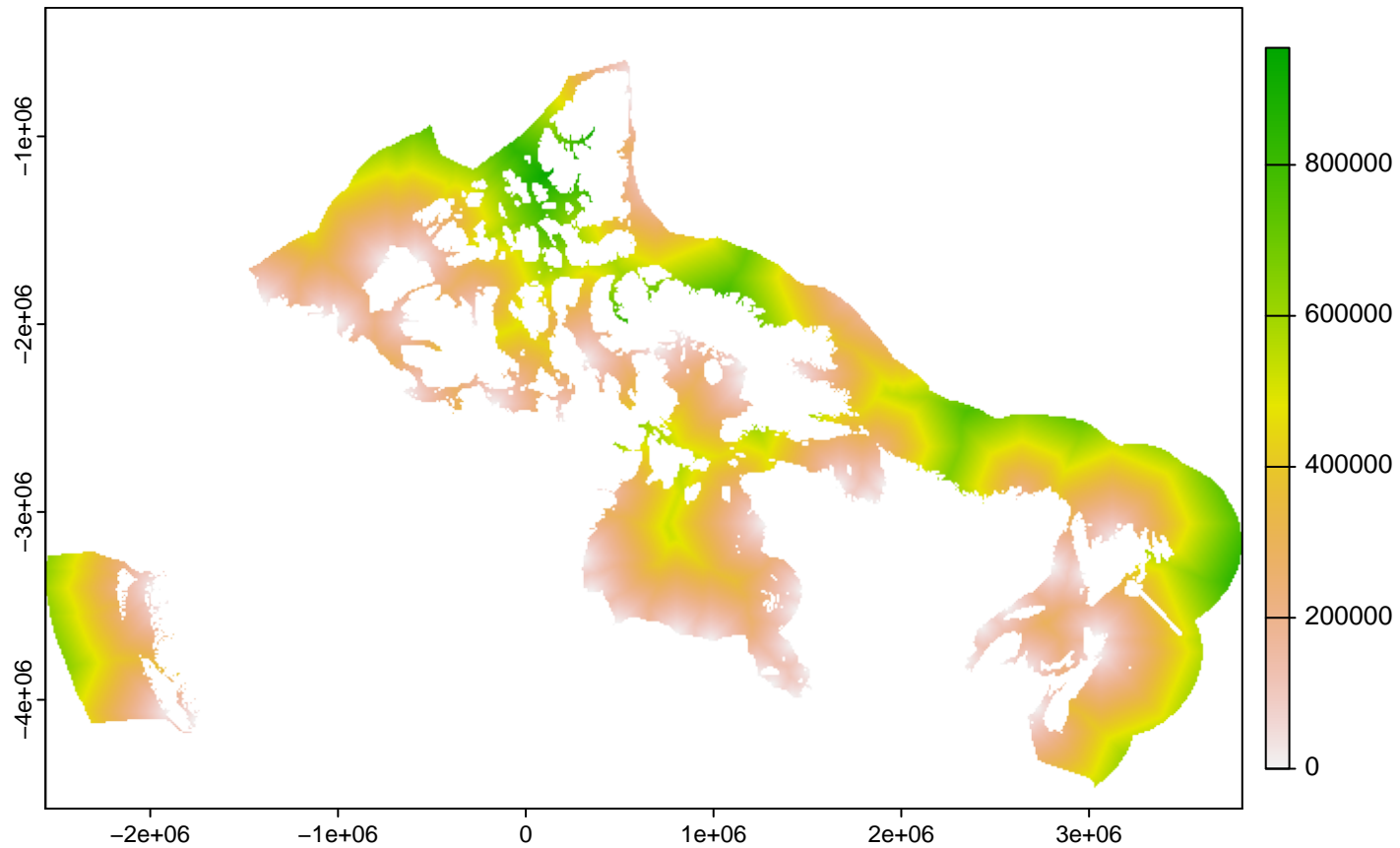
Primary production – surface (g/m³/d)



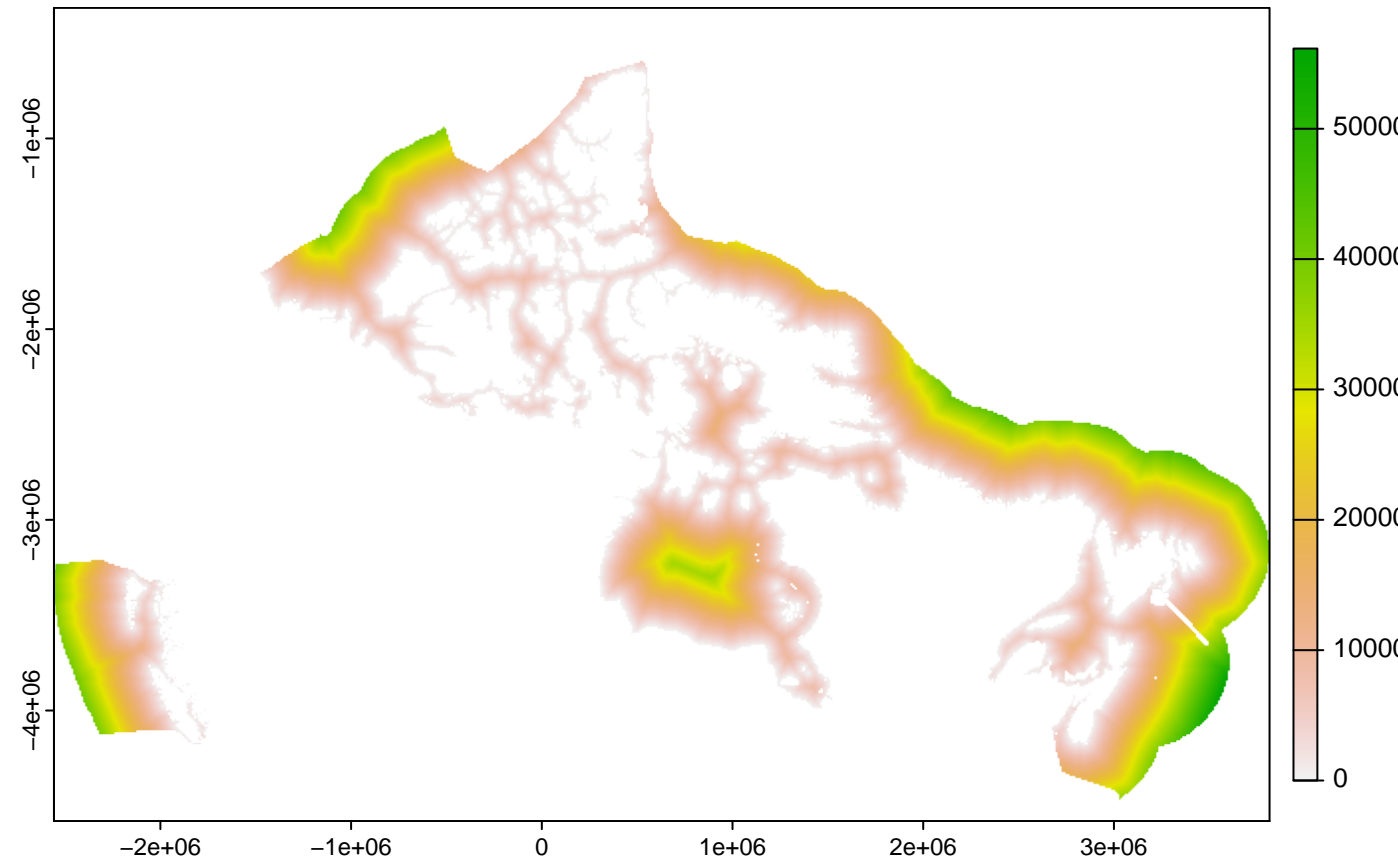
Mean current velocity – seafloor (m/s)



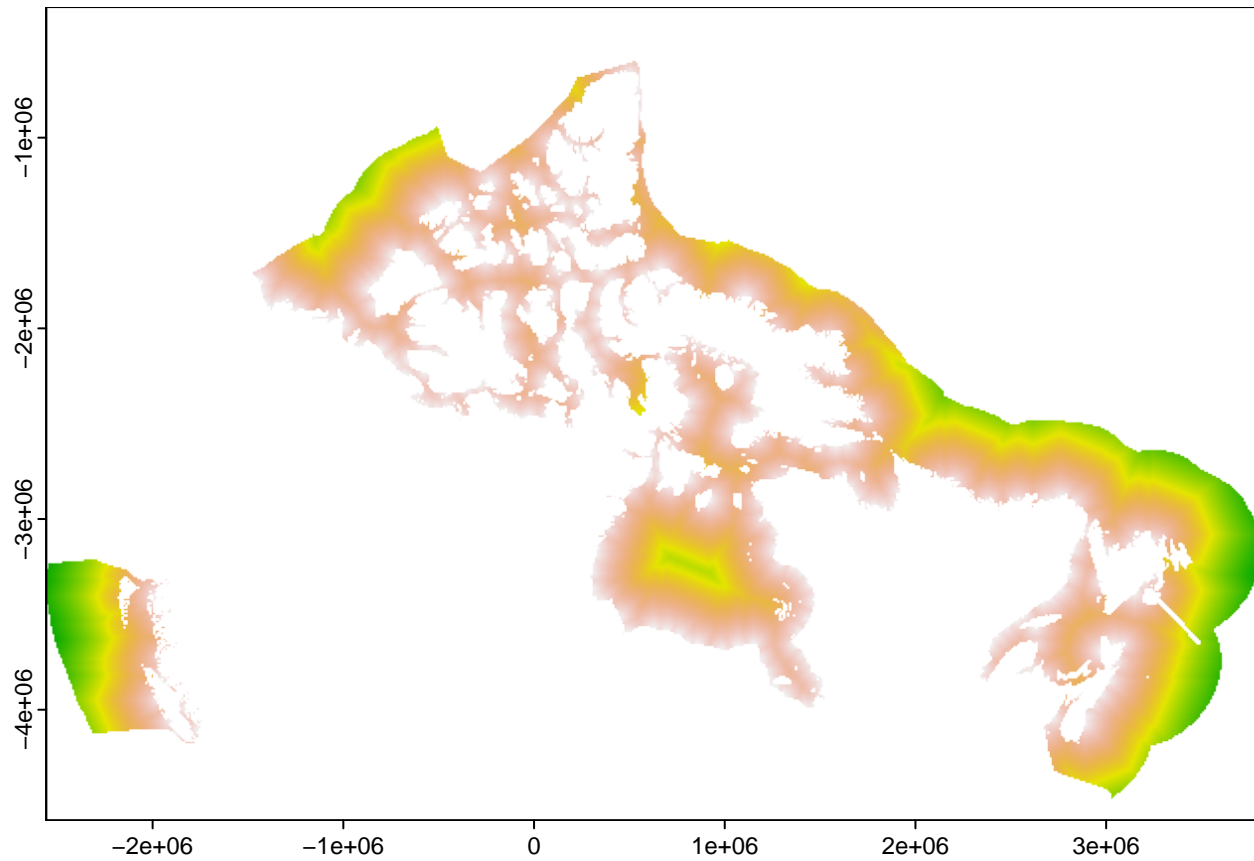
Distance to rivers – broad (m)



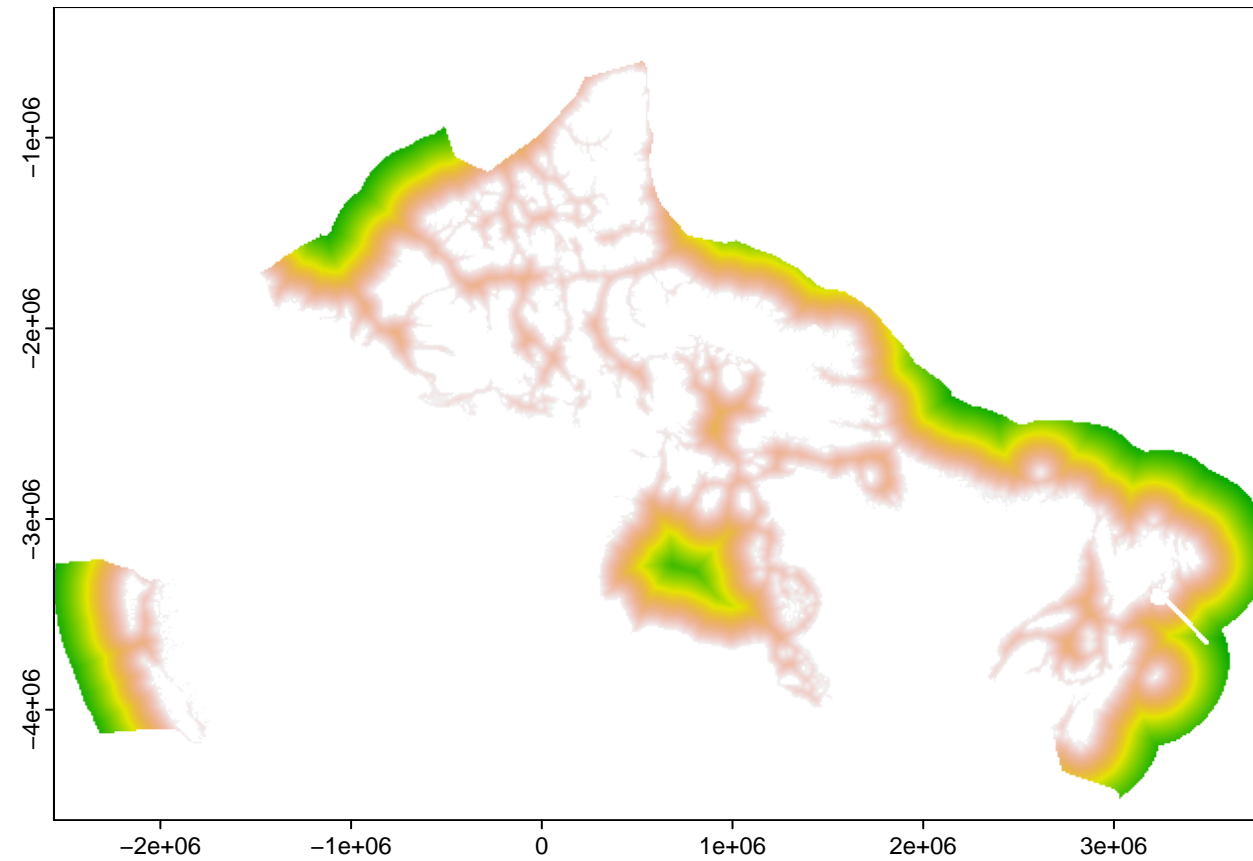
Distance to rivers – fine (m)



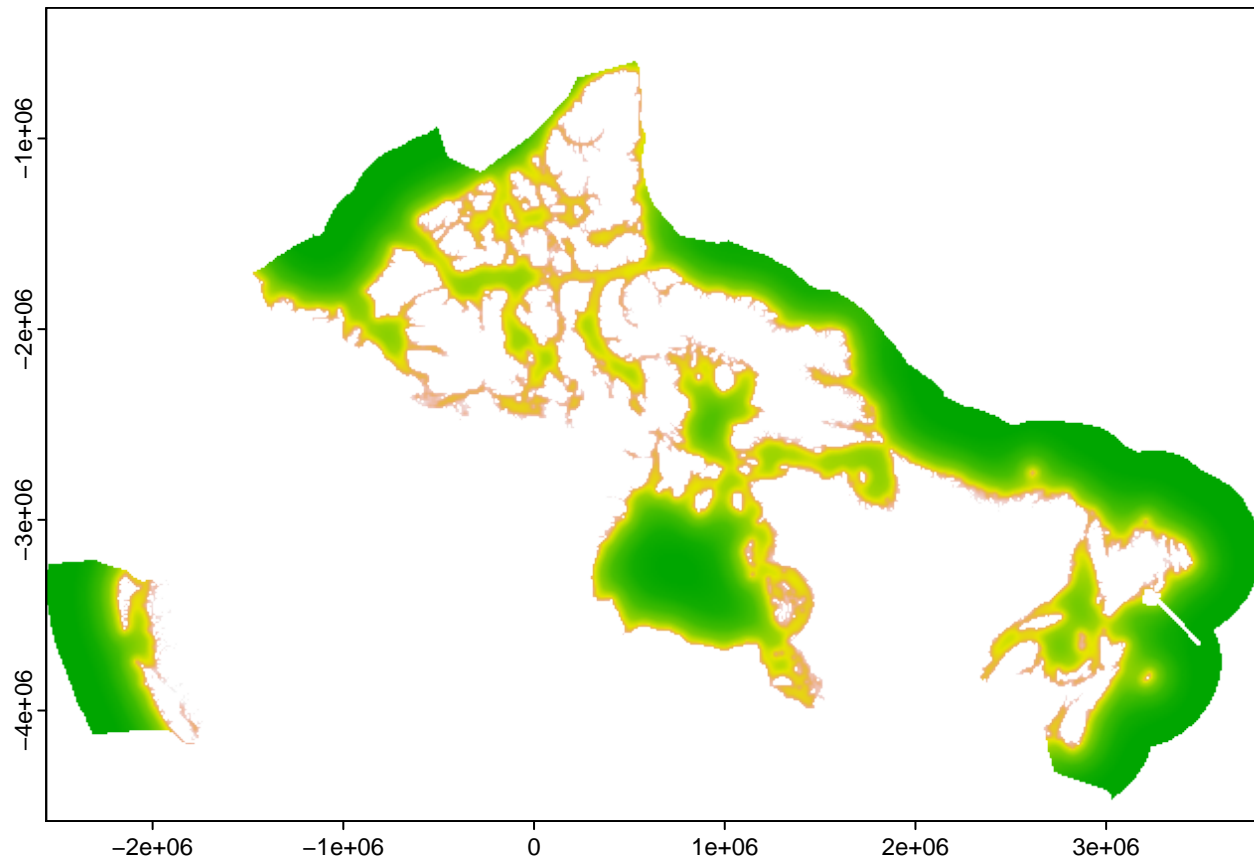
Distance to rivers – medium (m)



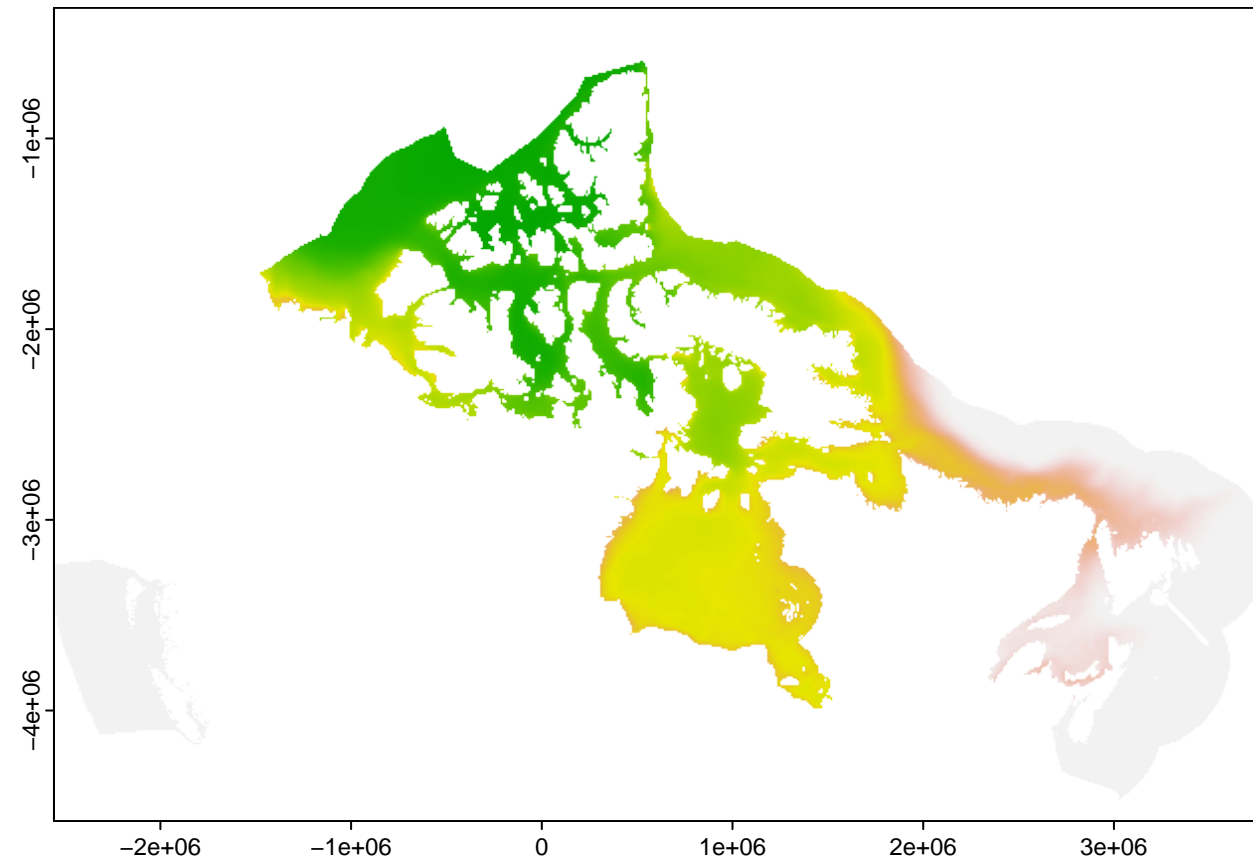
Distance to shore (m)



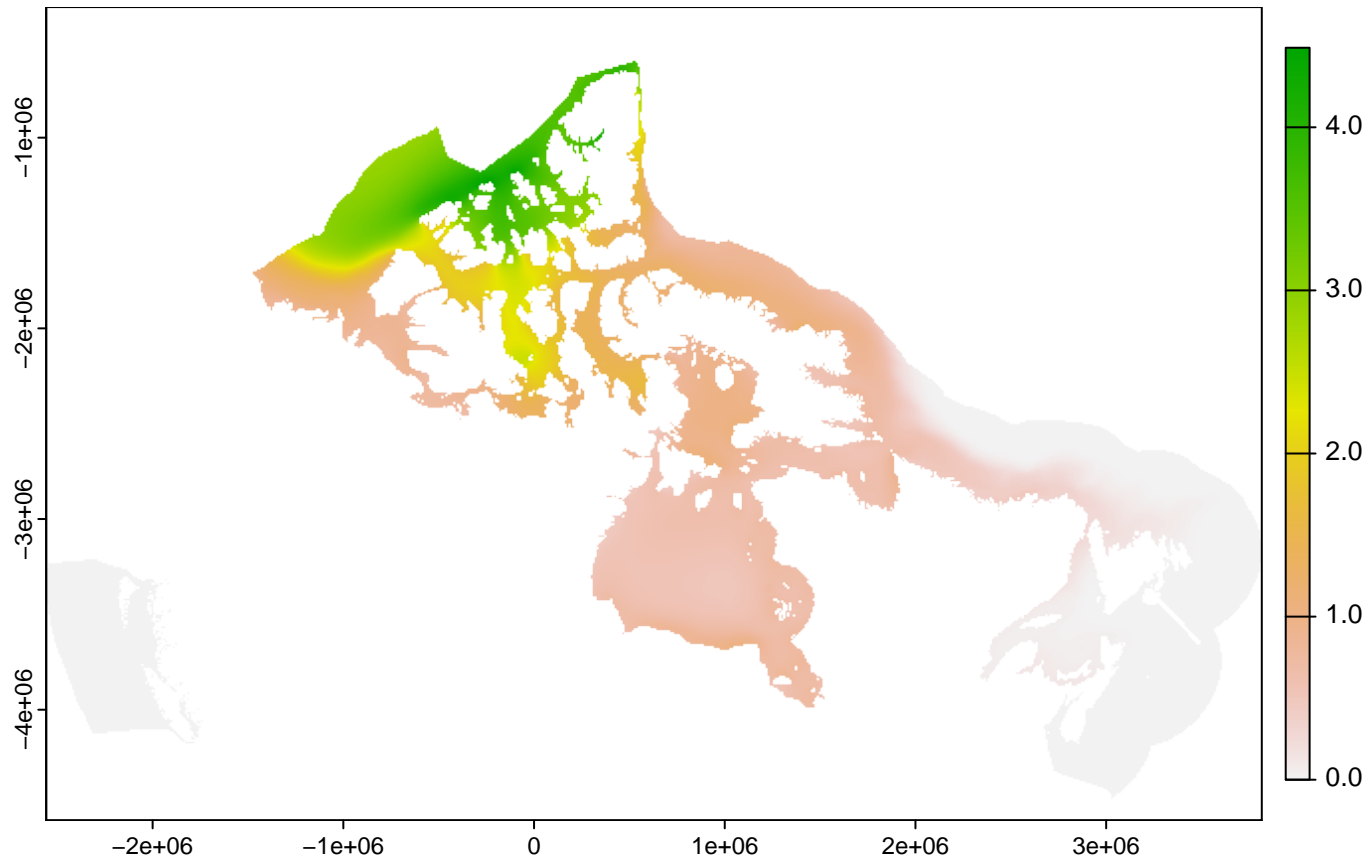
Exposure proxy



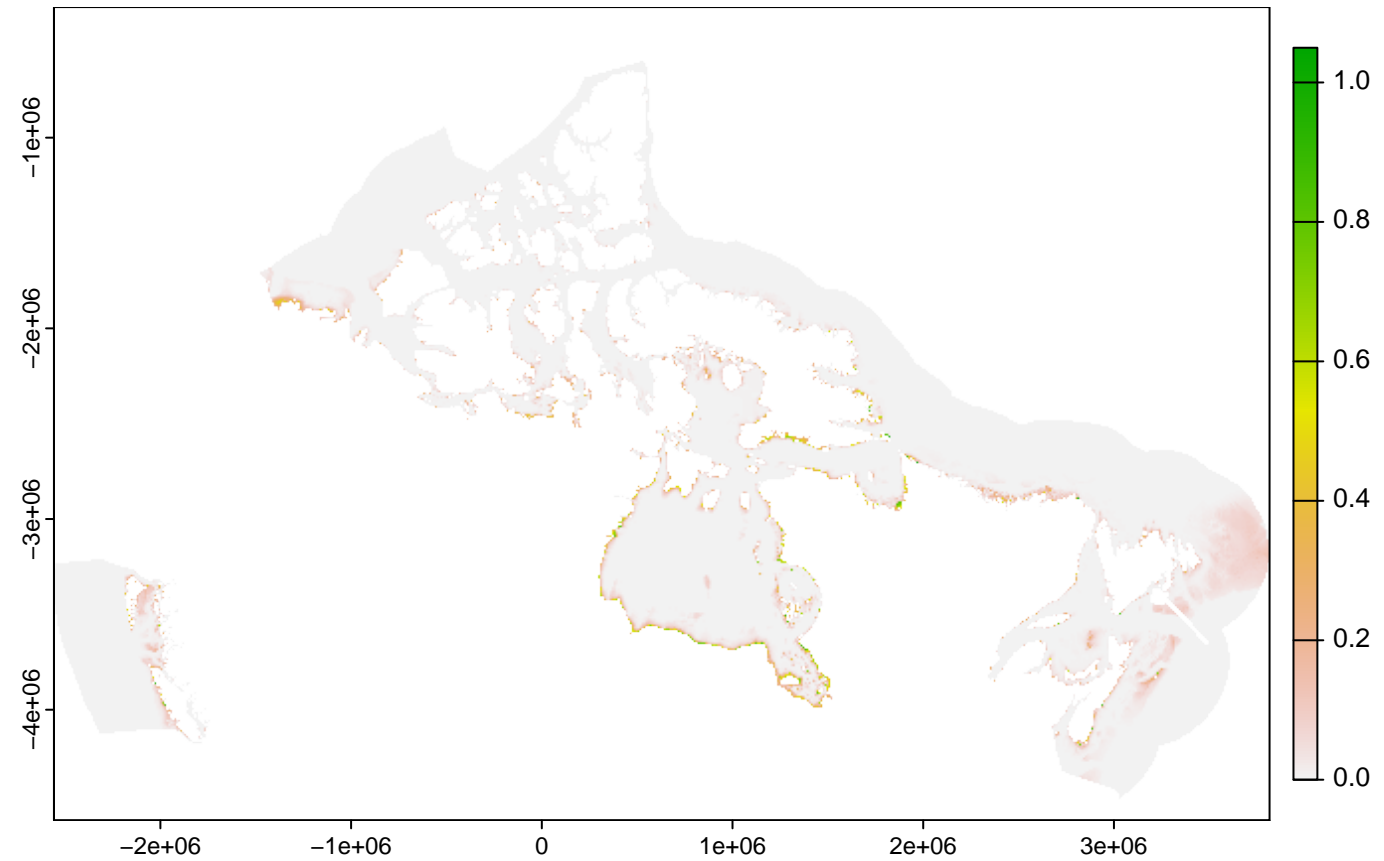
Ice concentration – surface (%)



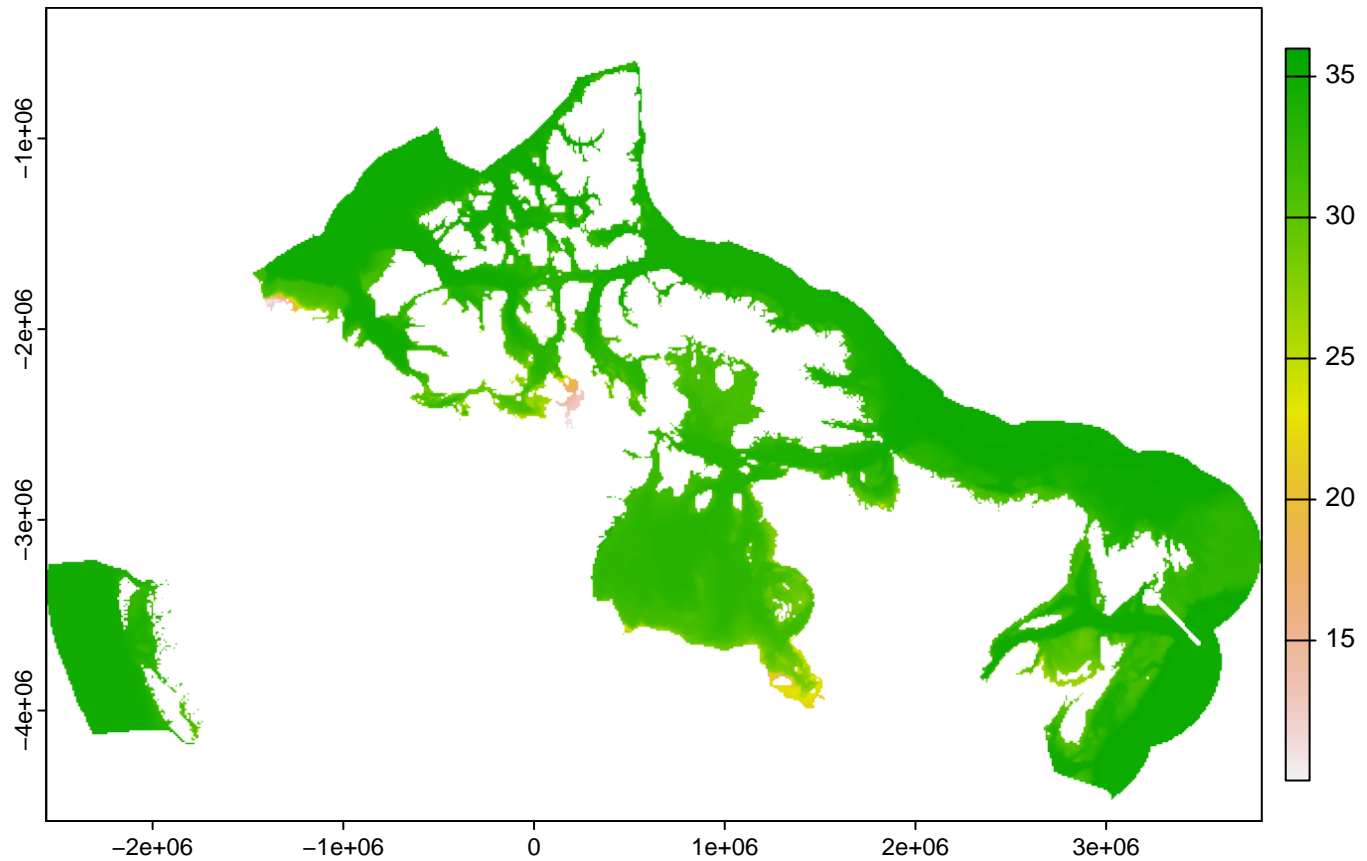
Ice thickness – surface (m)



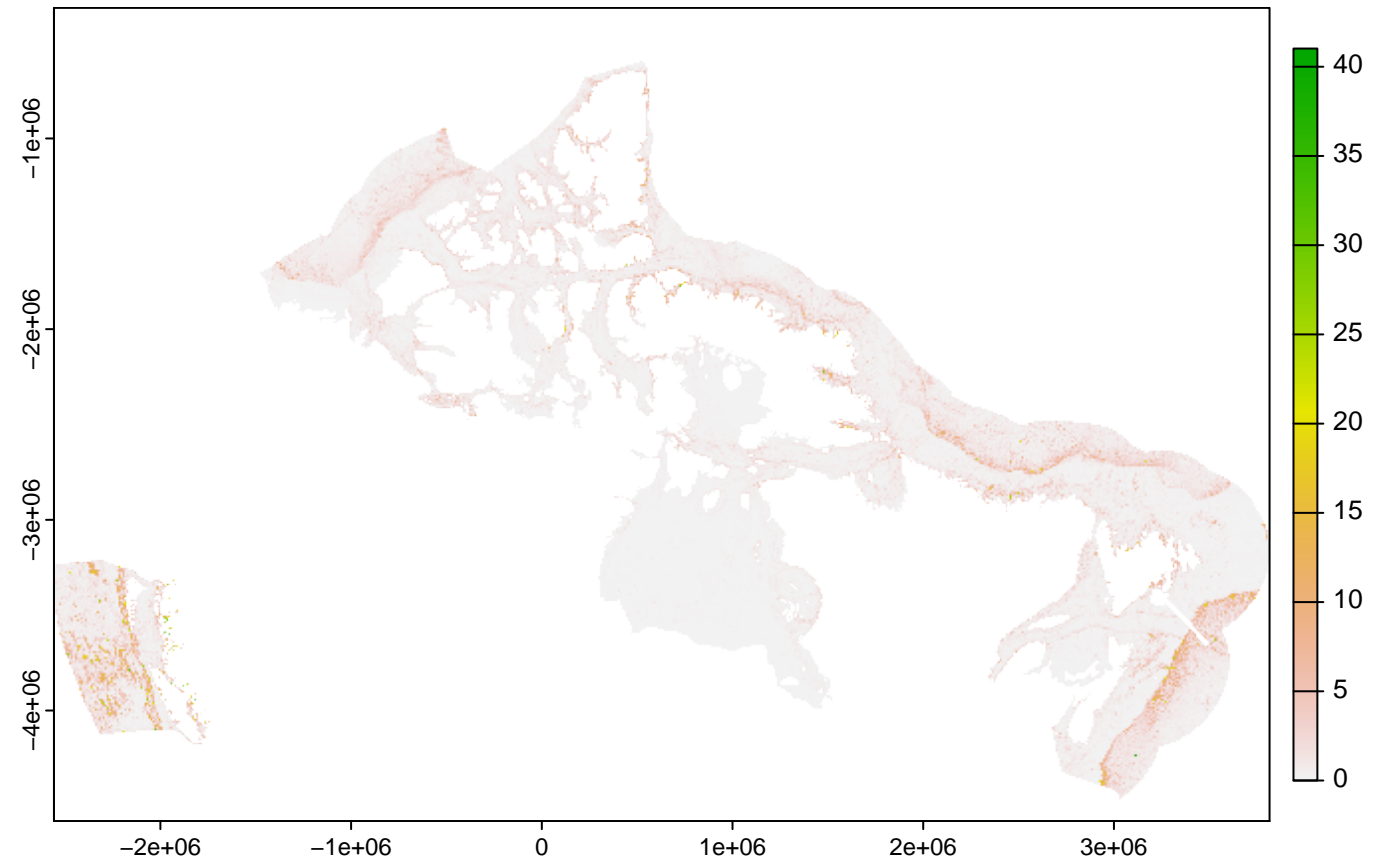
Wave velocity – seafloor (m/s)



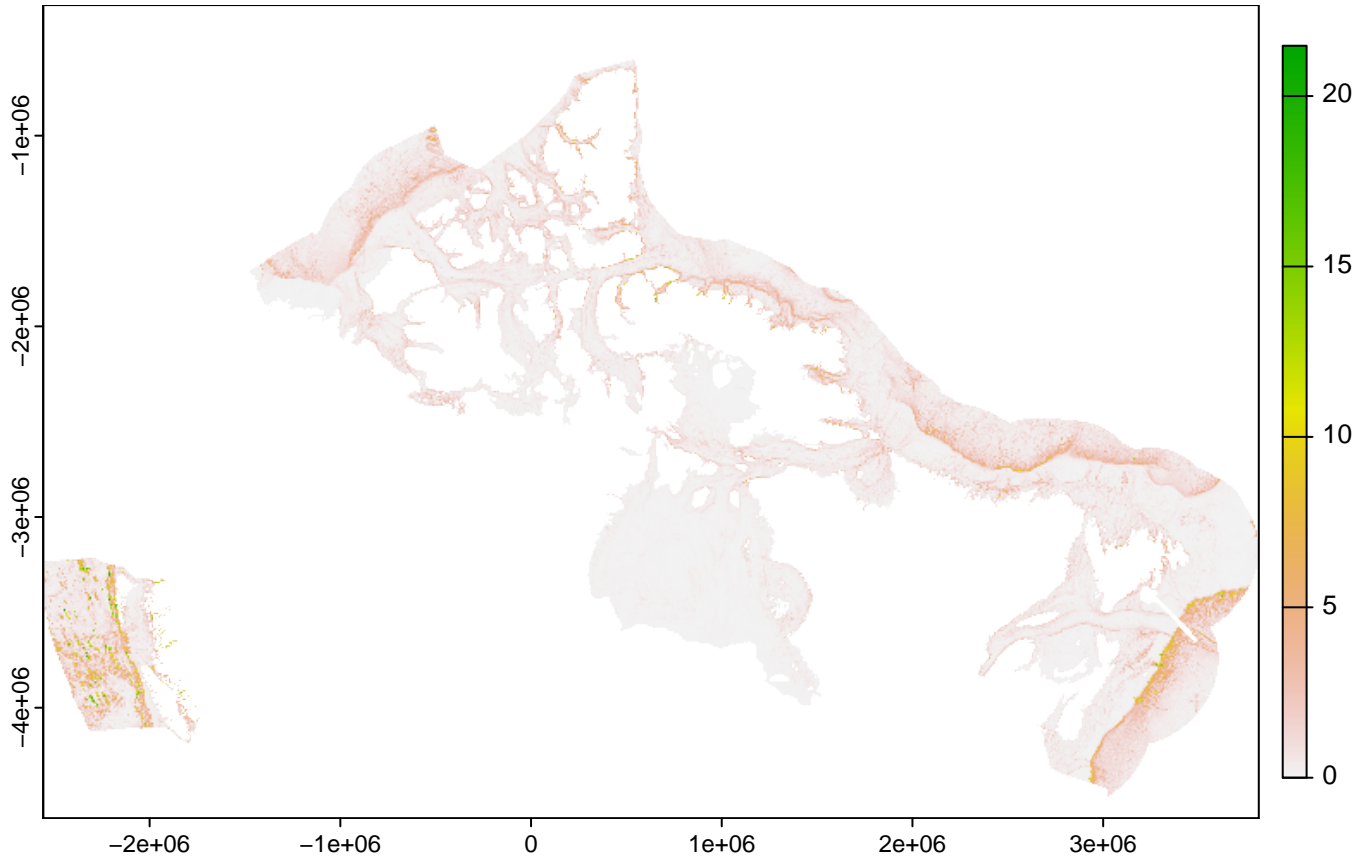
Salinity – seafloor (ppt)



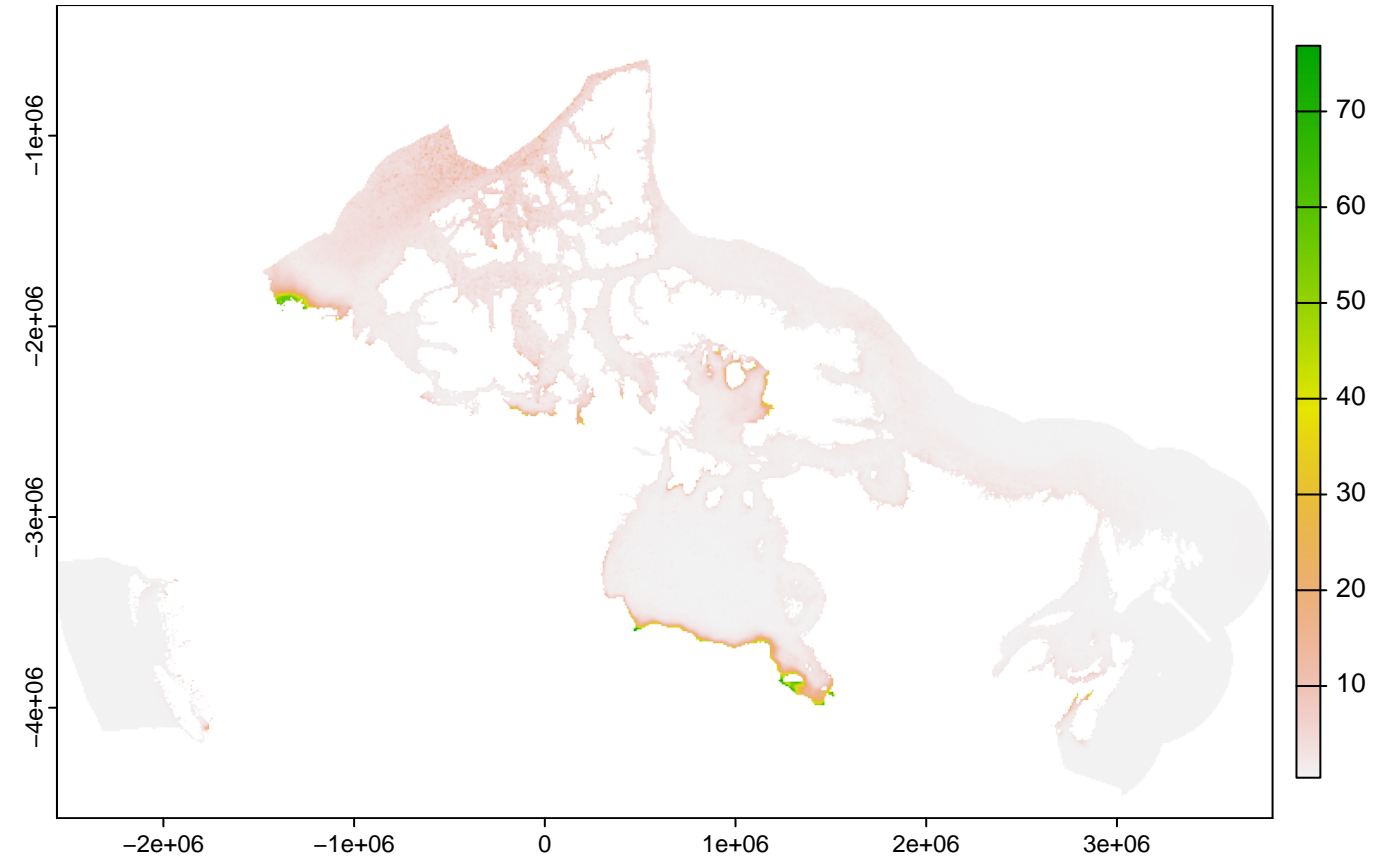
Slope (deg)



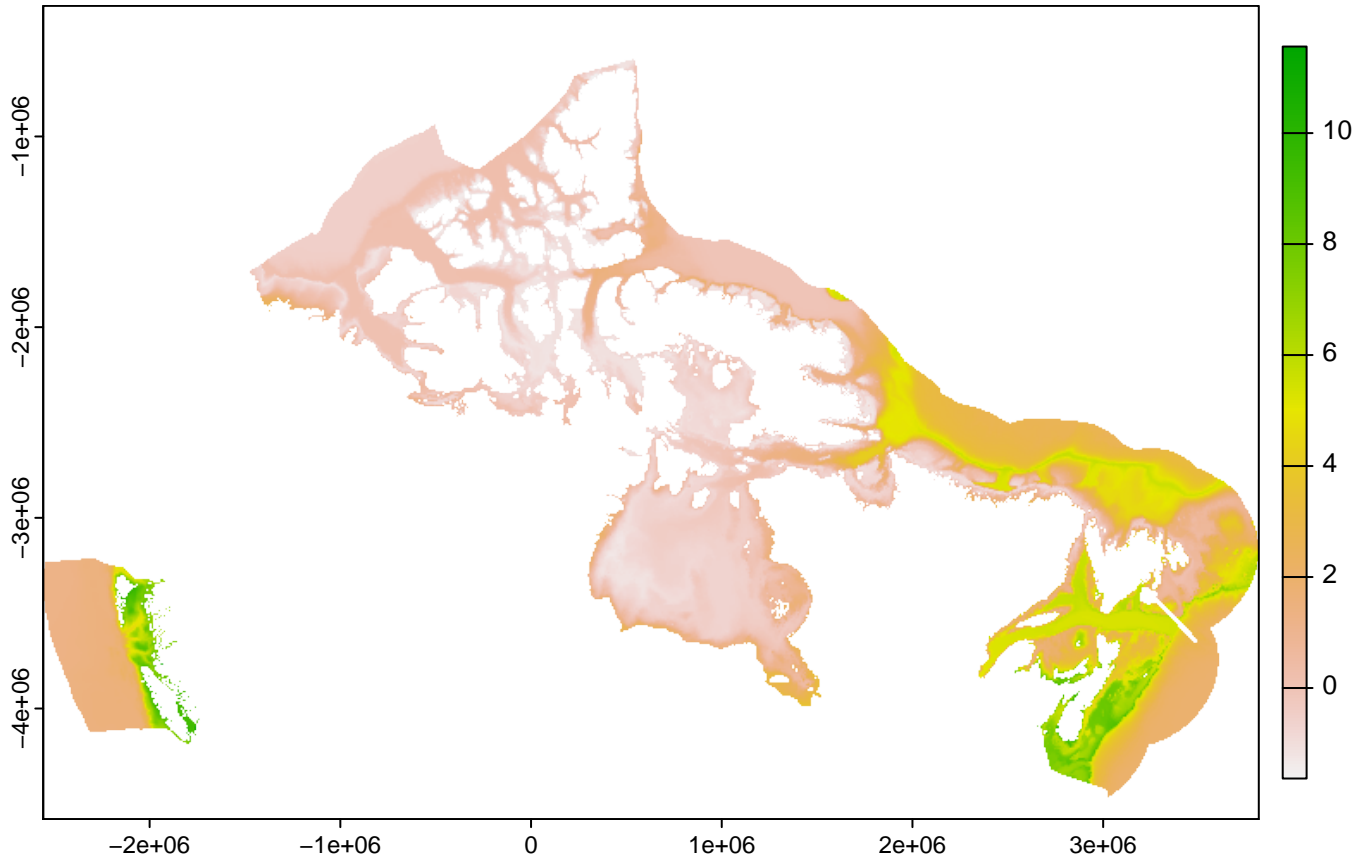
Slope smoothed (deg)



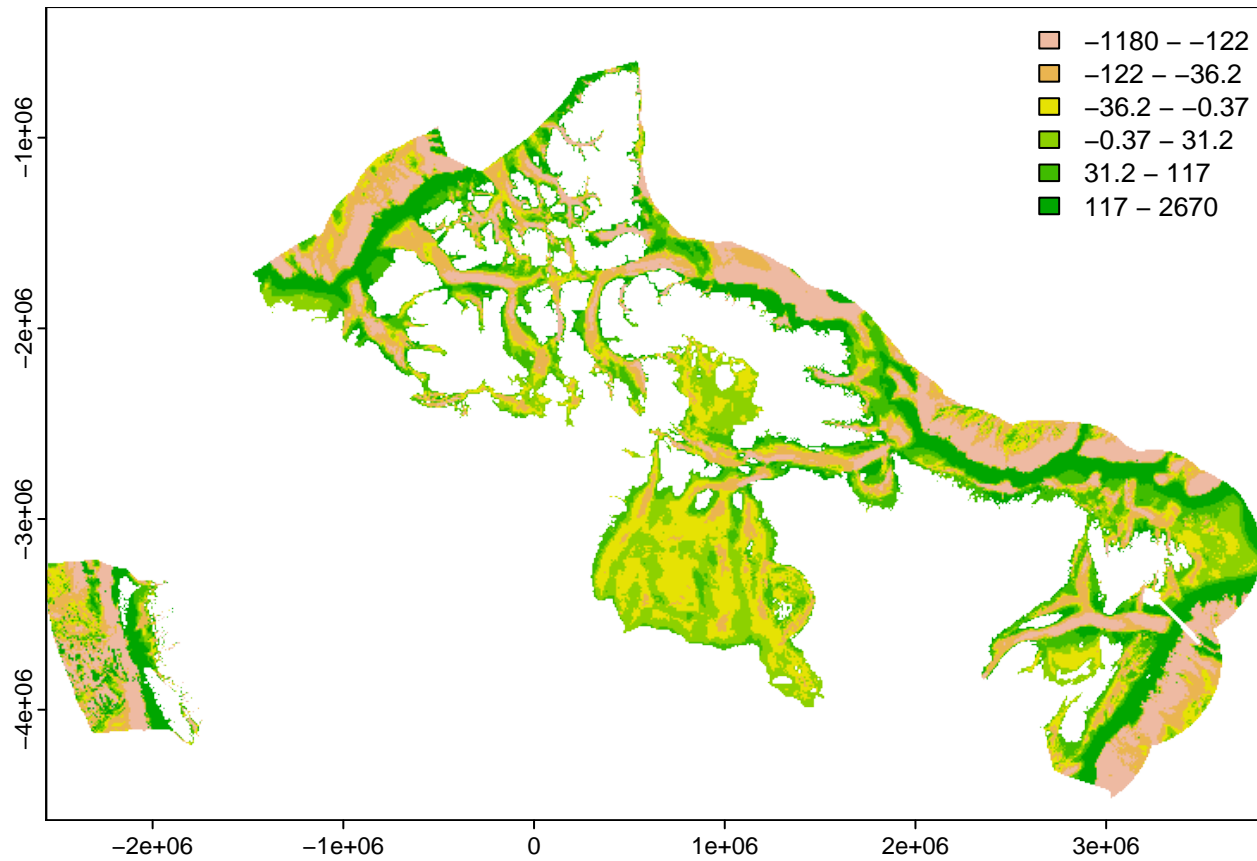
SPM - surface (g/m^3)



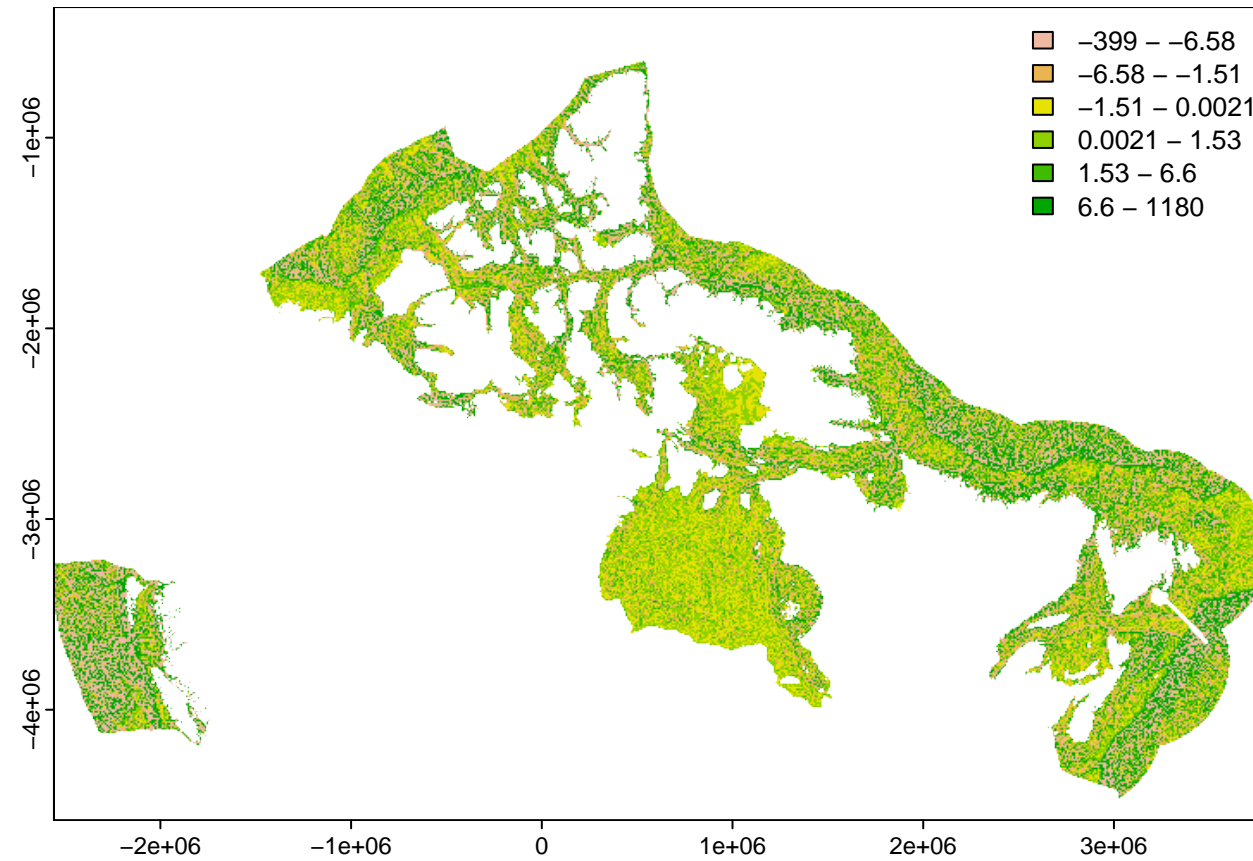
Temperature - seafloor (celcius)



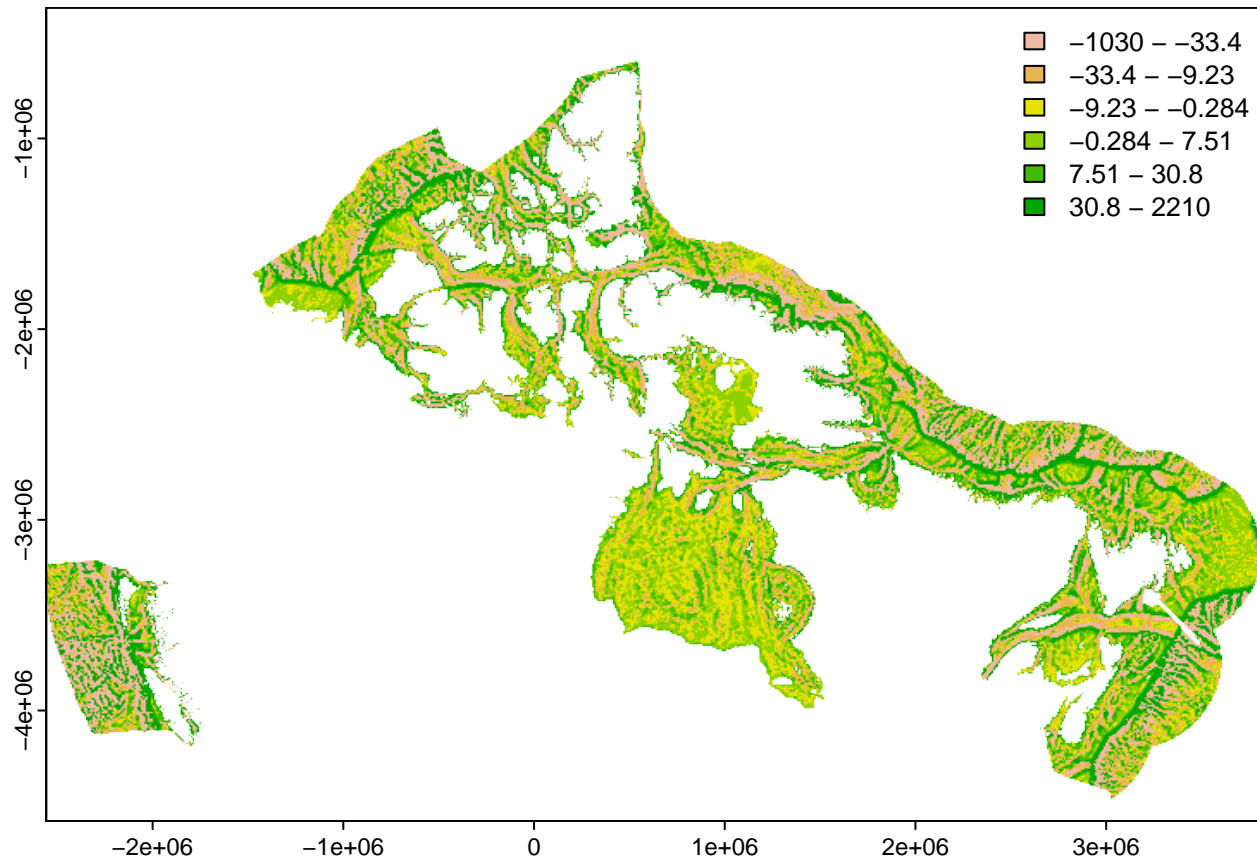
BPI – broad (m)



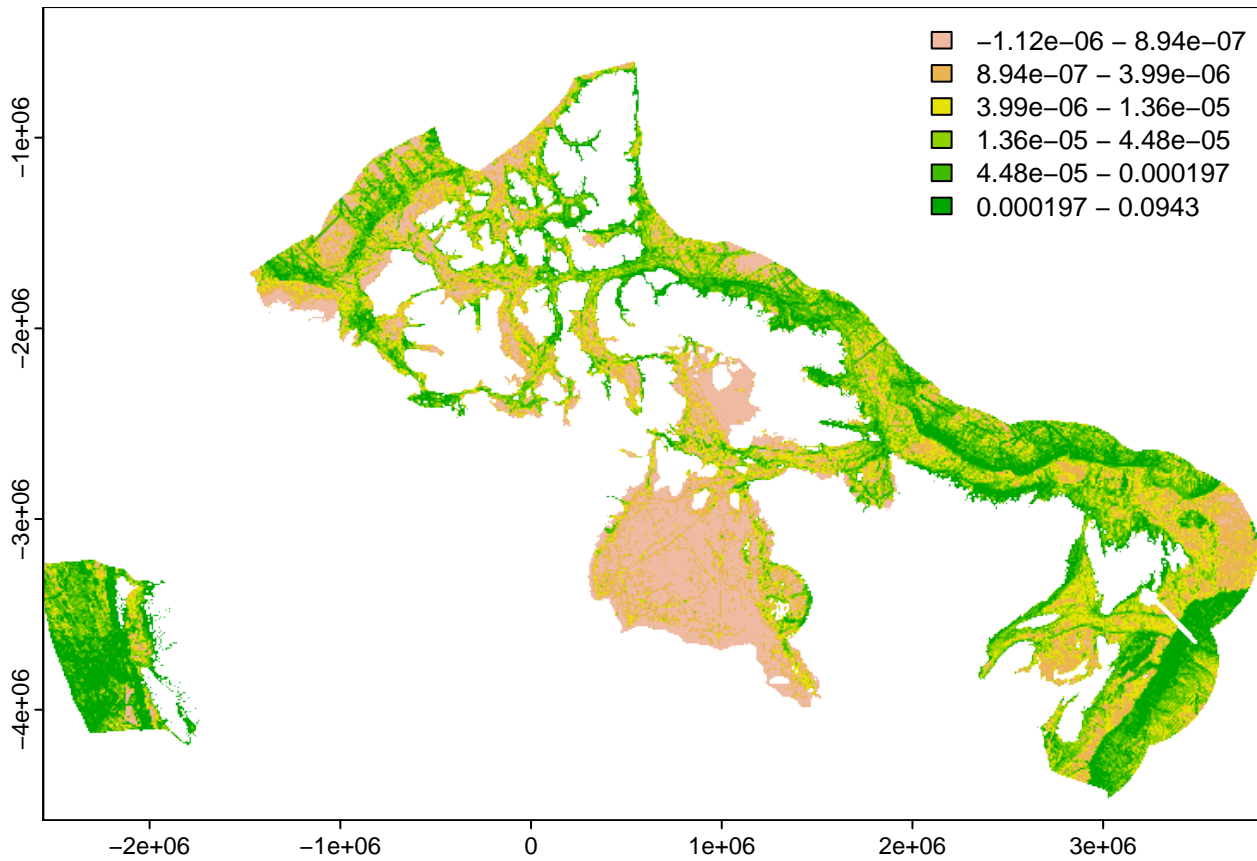
BPI – fine (m)



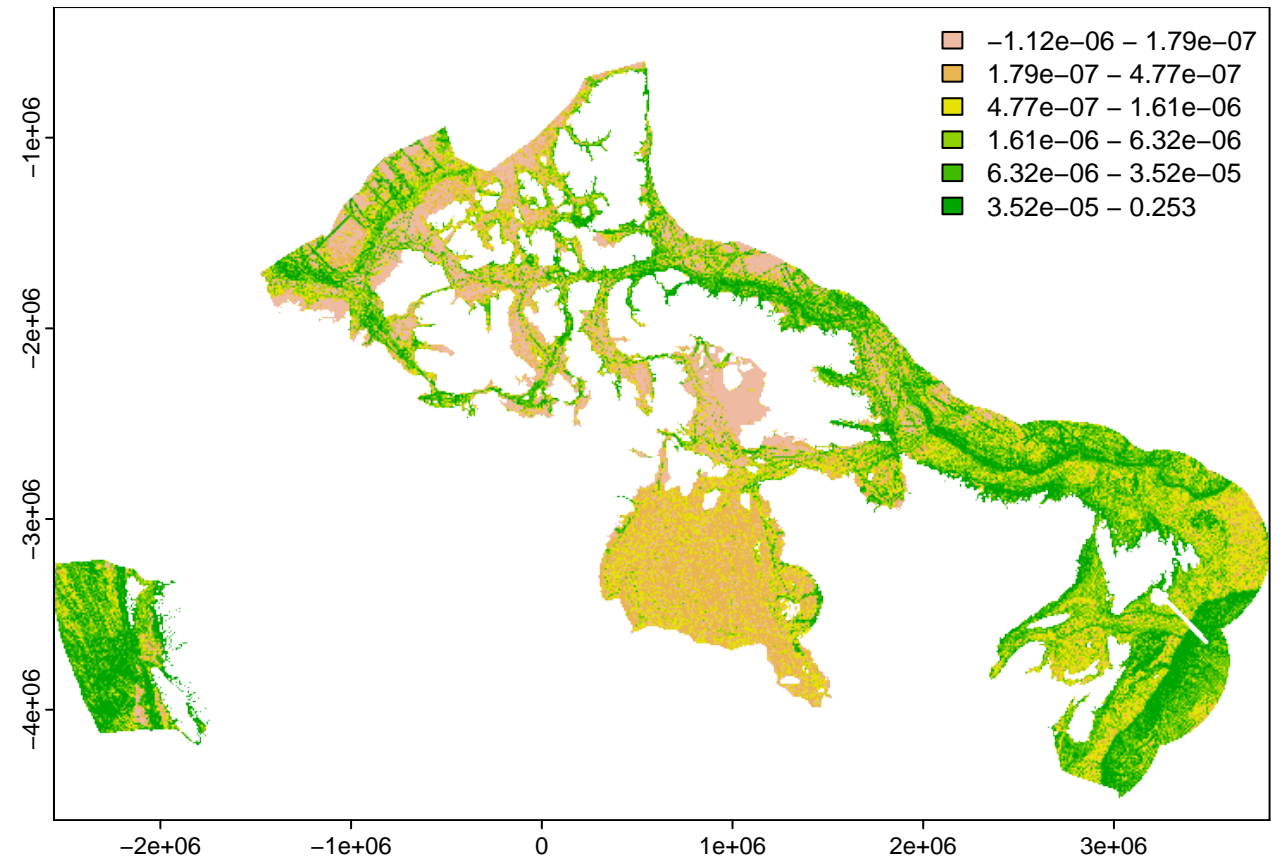
BPI – medium (m)



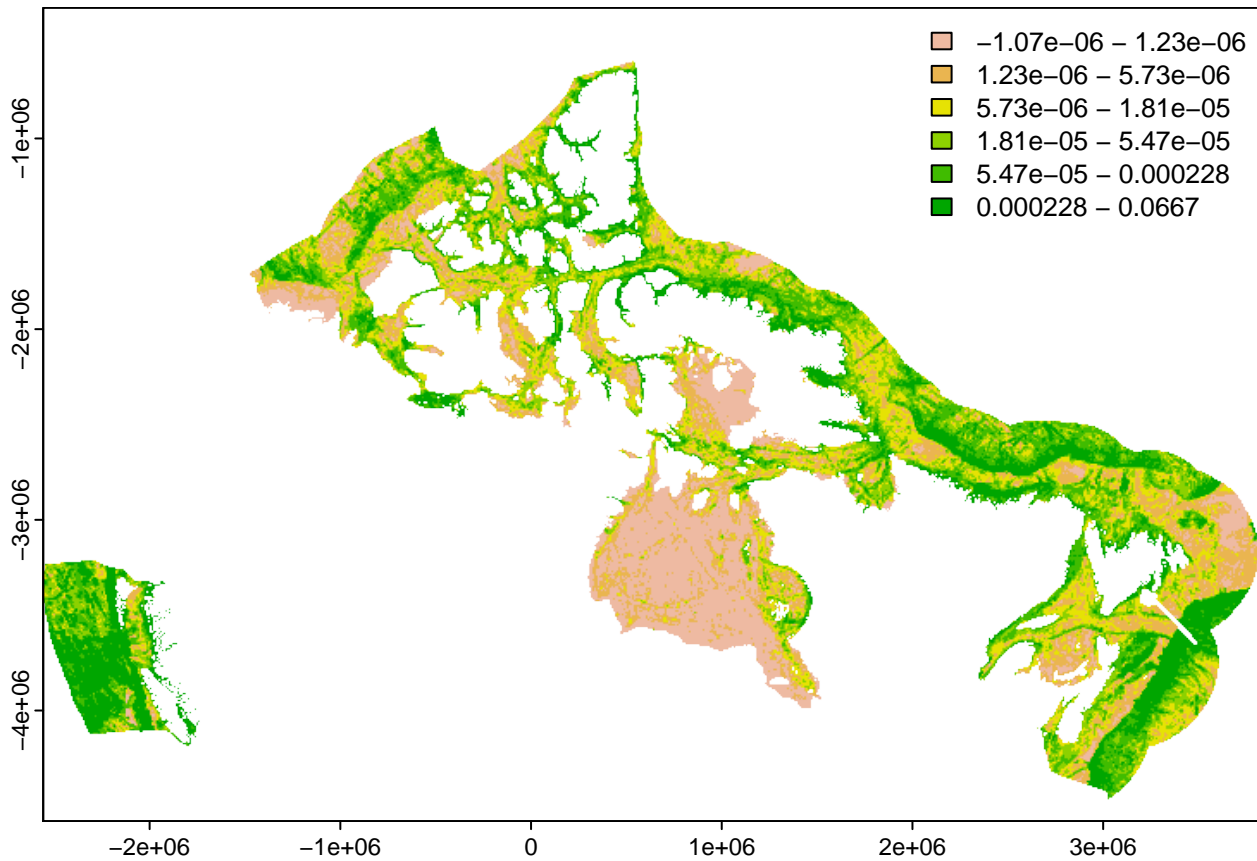
VRM - fine



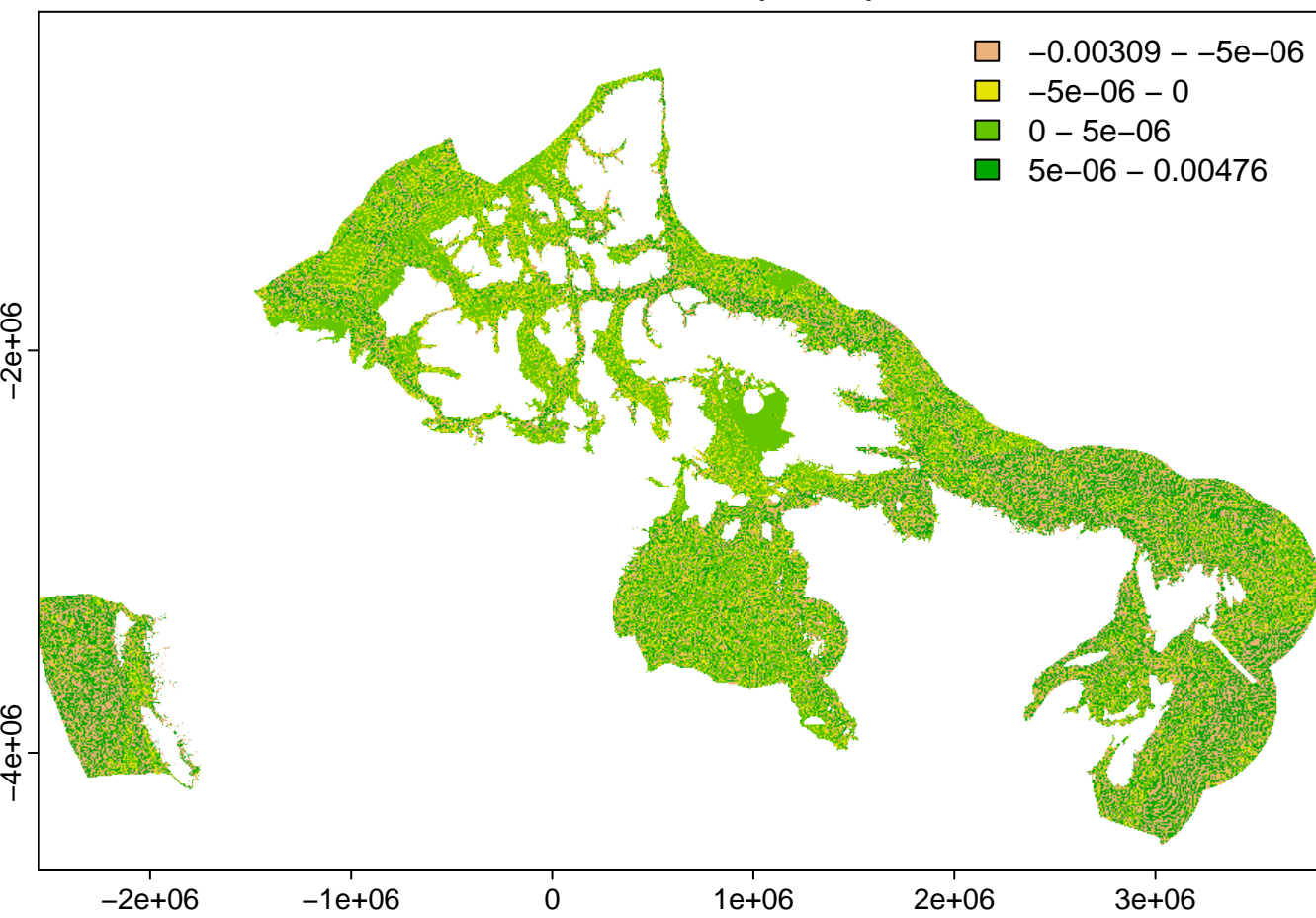
VRM - medium



VRM - broad



Total curvature (rad/m)



Total curvature smoothed (rad/m)

