



Supplement of

Routine monitoring of western Lake Erie to track water quality changes associated with cyanobacterial harmful algal blooms

Anna G. Boegehold et al.

Correspondence to: Anna G. Boegehold (annaboeg@umich.edu) and Reagan Errera (reagan.errera@noaa.gov)

The copyright of individual parts of the supplement might differ from the article licence.

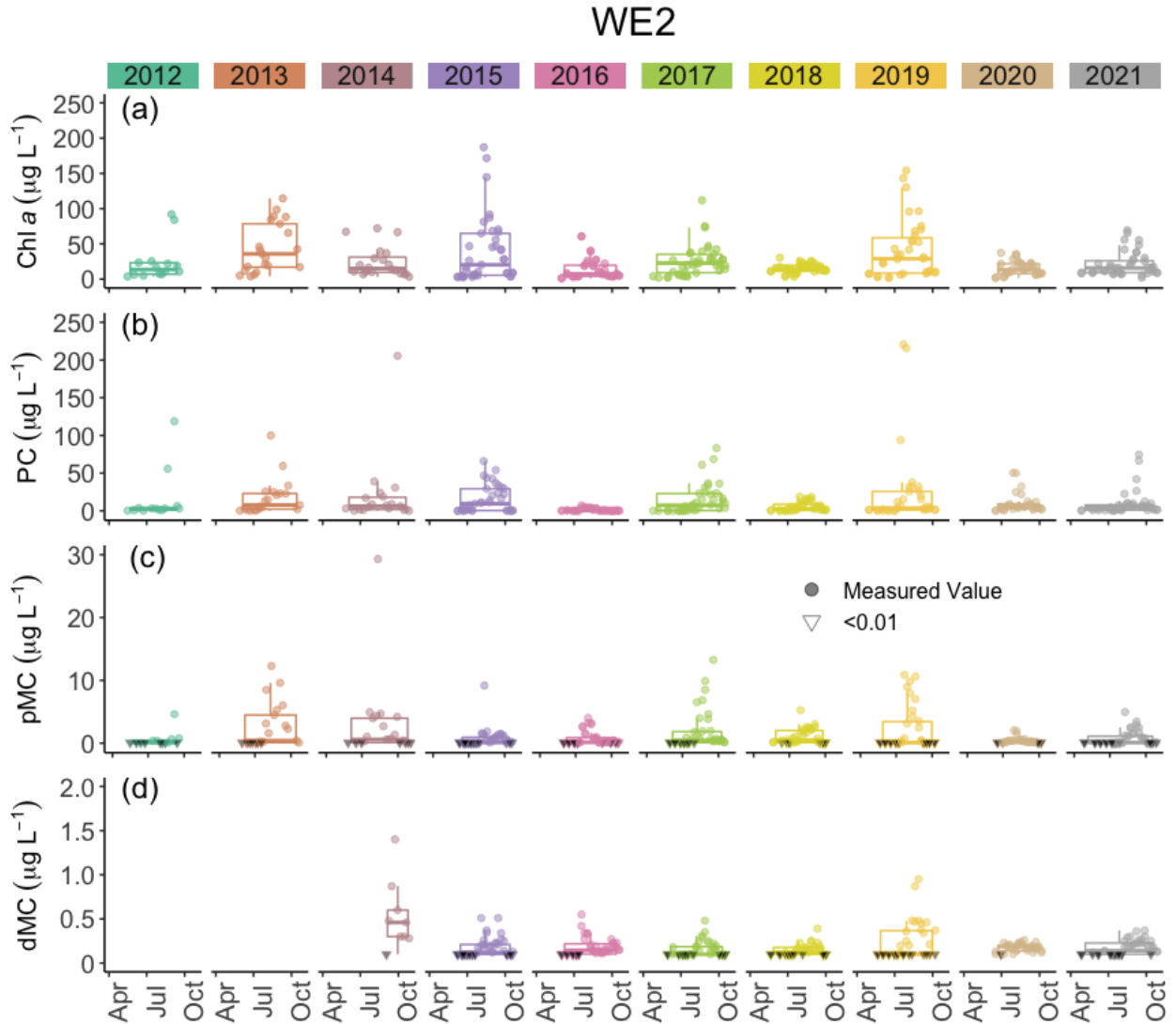


Figure S1. Concentrations of chlorophyll a (Chl a), phycocyanin (PC), particulate microcystins (pMC), and dissolved microcystins (dMC) at Station WE02 for all years sampled. Boxplots represent the median and 25% and 75% quartiles with whiskers extending to the highest or lowest point within 1.5x the interquartile range. A scatterplot is overlaid on the boxplots.

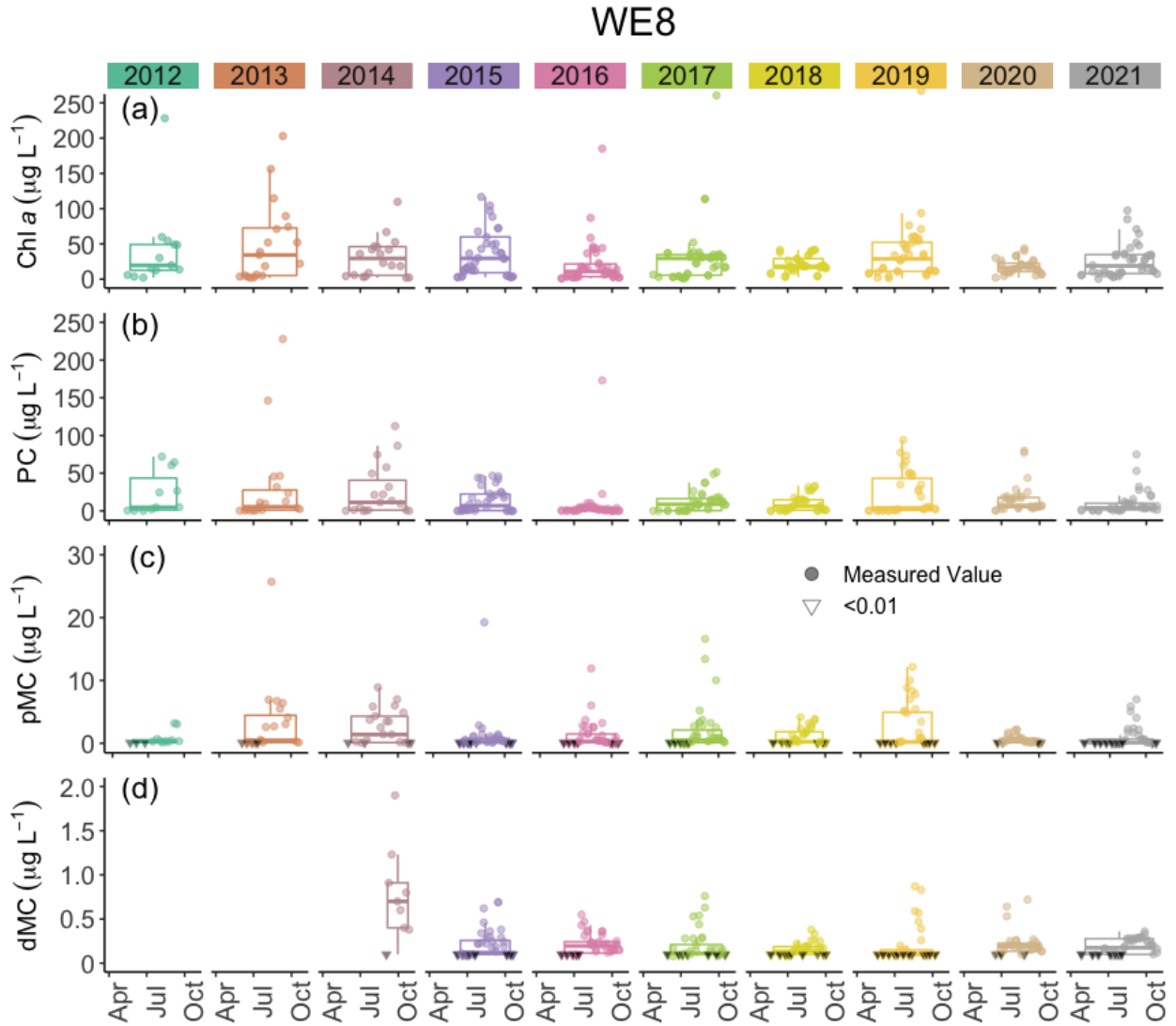


Figure S2. Concentrations of chlorophyll a (Chl a), phycocyanin (PC), particulate microcystins (pMC), and dissolved microcystins (dMC) at Station WE08 for all years sampled. Boxplots represent the median and 25% and 75% quartiles with whiskers extending to the highest or lowest point within 1.5x the interquartile range. A scatterplot is overlaid on the boxplots.

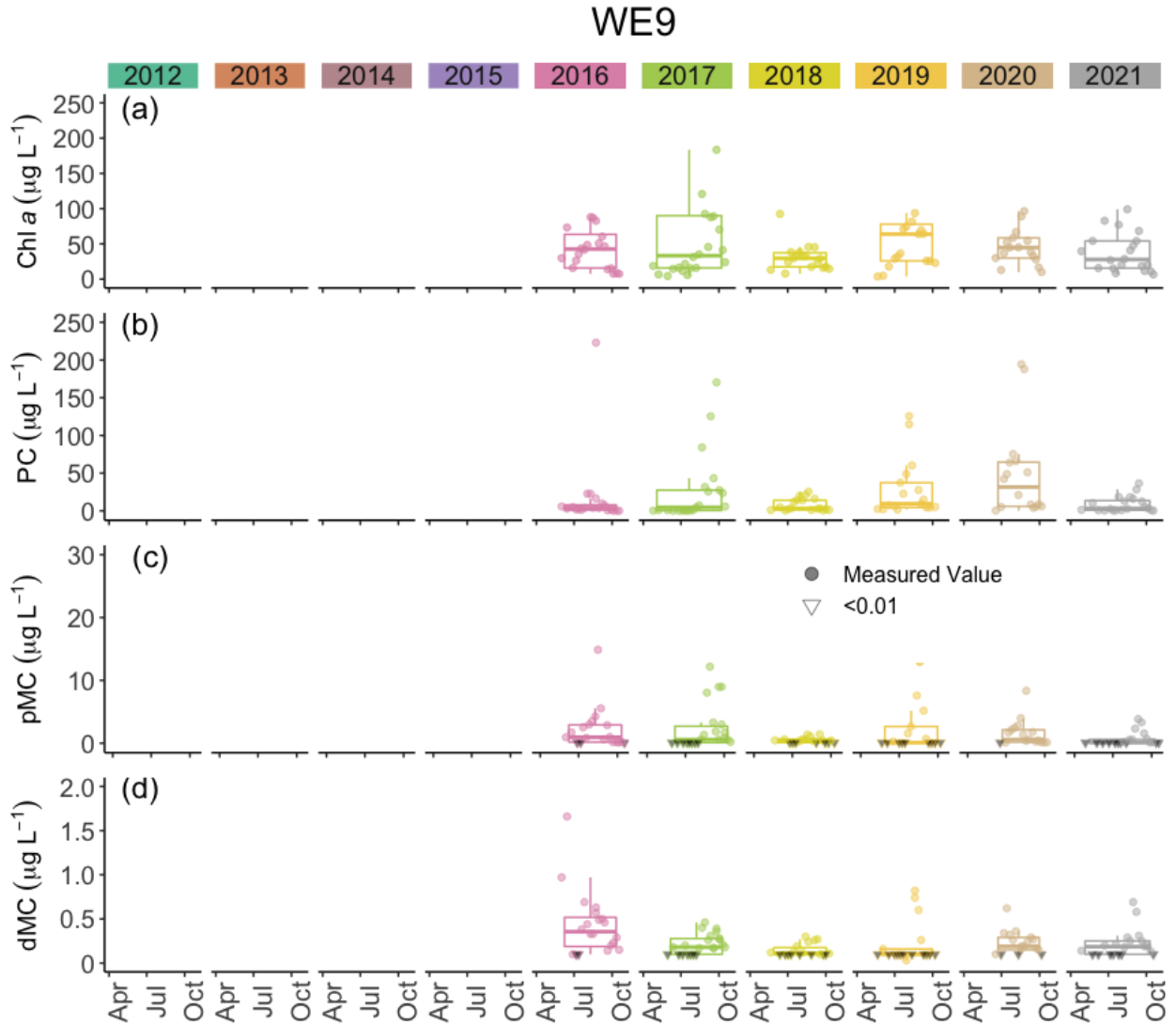


Figure S3. Concentrations of chlorophyll a (Chl a), phycocyanin (PC), particulate microcystins (pMC), and dissolved microcystins (dMC) at Station WE09 for all years sampled. Boxplots represent the median and 25% and 75% quartiles with whiskers extending to the highest or lowest point within 1.5x the interquartile range. A scatterplot is overlaid on the boxplots.

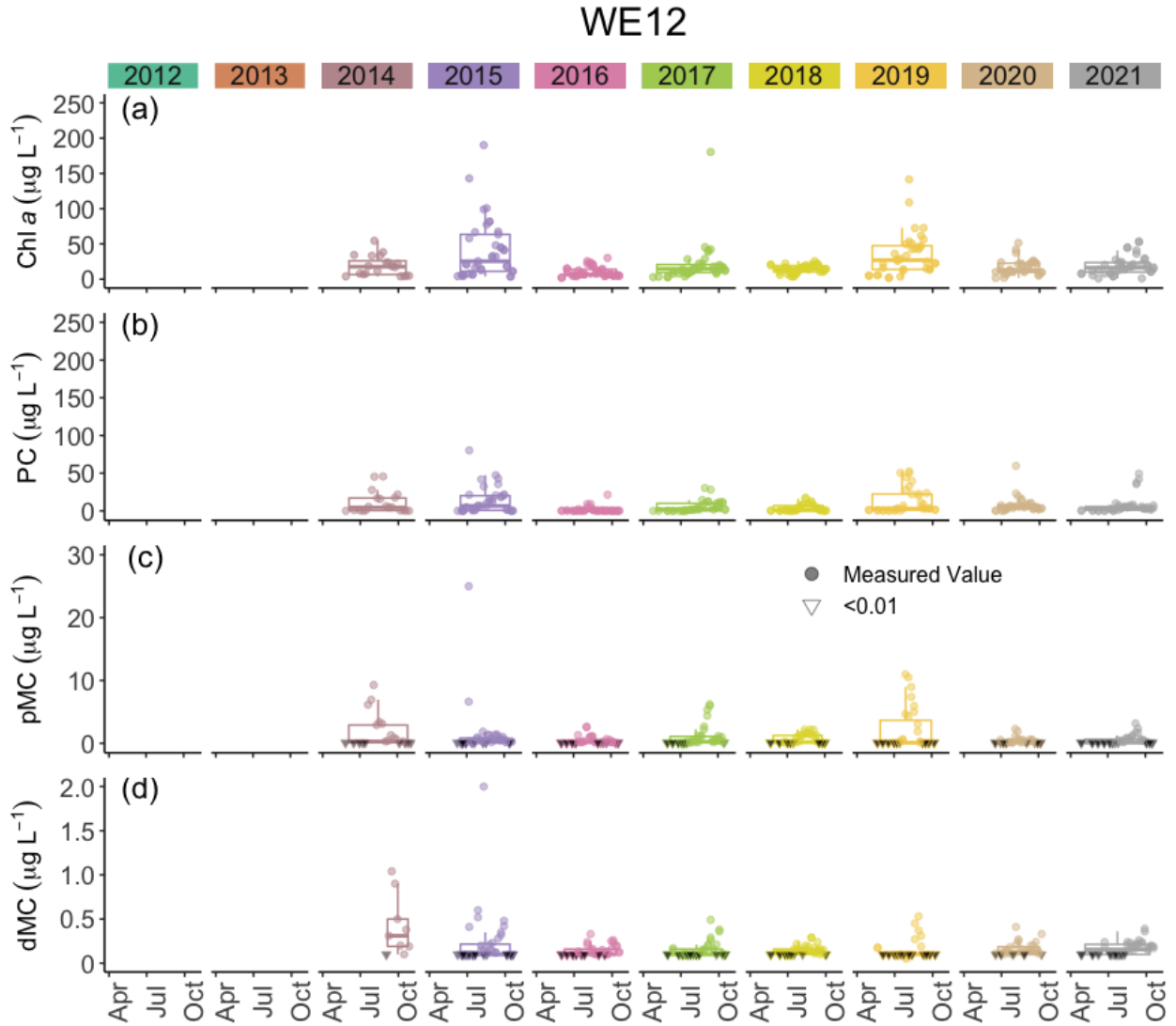


Figure S4. Concentrations of chlorophyll *a* (Chl *a*), phycocyanin (PC), particulate microcystins (pMC), and dissolved microcystins (dMC) at Station WE12 for all years sampled. Boxplots represent the median and 25% and 75% quartiles with whiskers extending to the highest or lowest point within 1.5x the interquartile range. A scatterplot is overlaid on the boxplots.

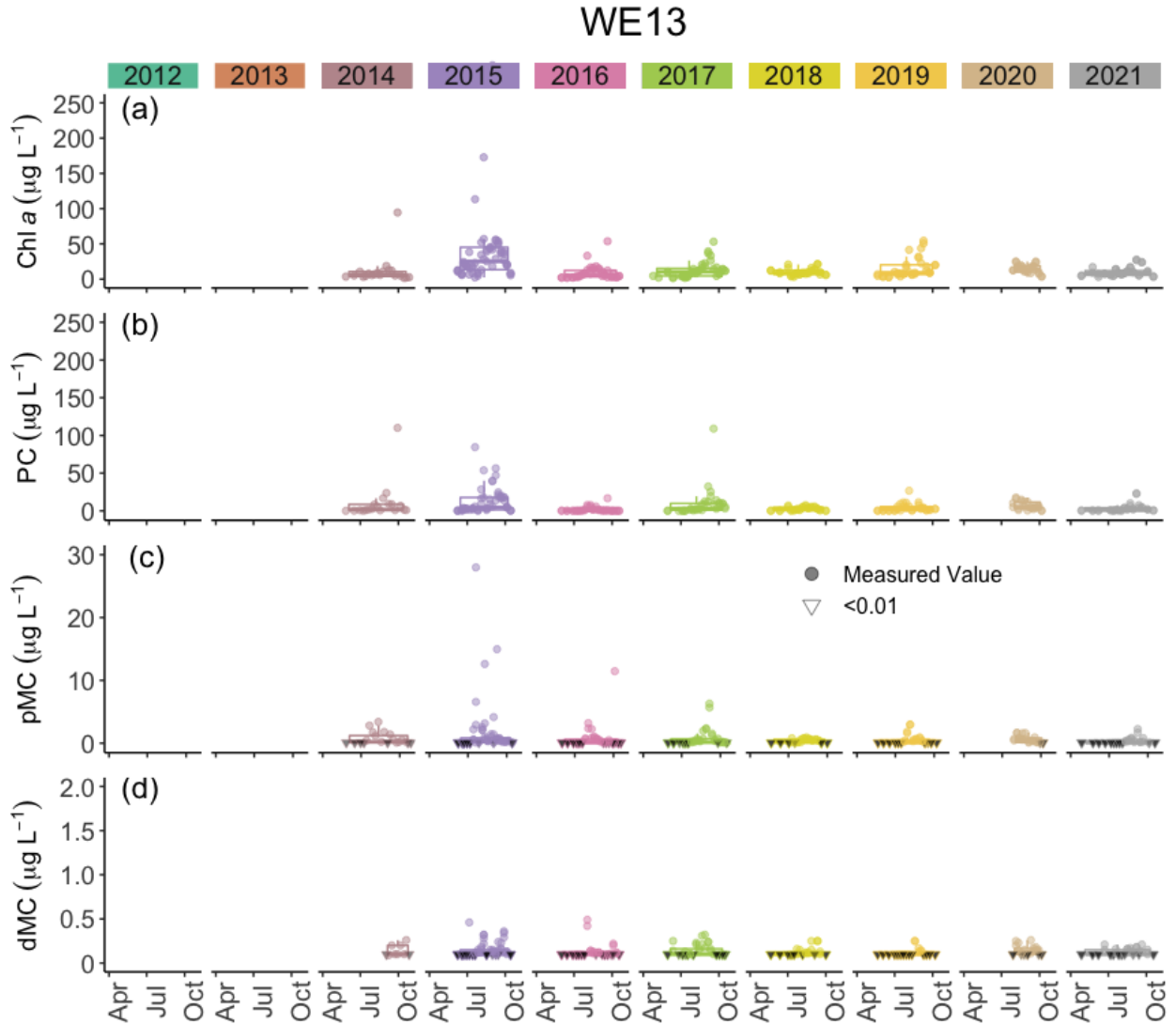


Figure S5. Concentrations of chlorophyll a (Chl a), phycocyanin (PC), particulate microcystins (pMC), and dissolved microcystins (dMC) at Station WE13 for all years sampled. Boxplots represent the median and 25% and 75% quartiles with whiskers extending to the highest or lowest point within 1.5x the interquartile range. A scatterplot is overlaid on the boxplots.

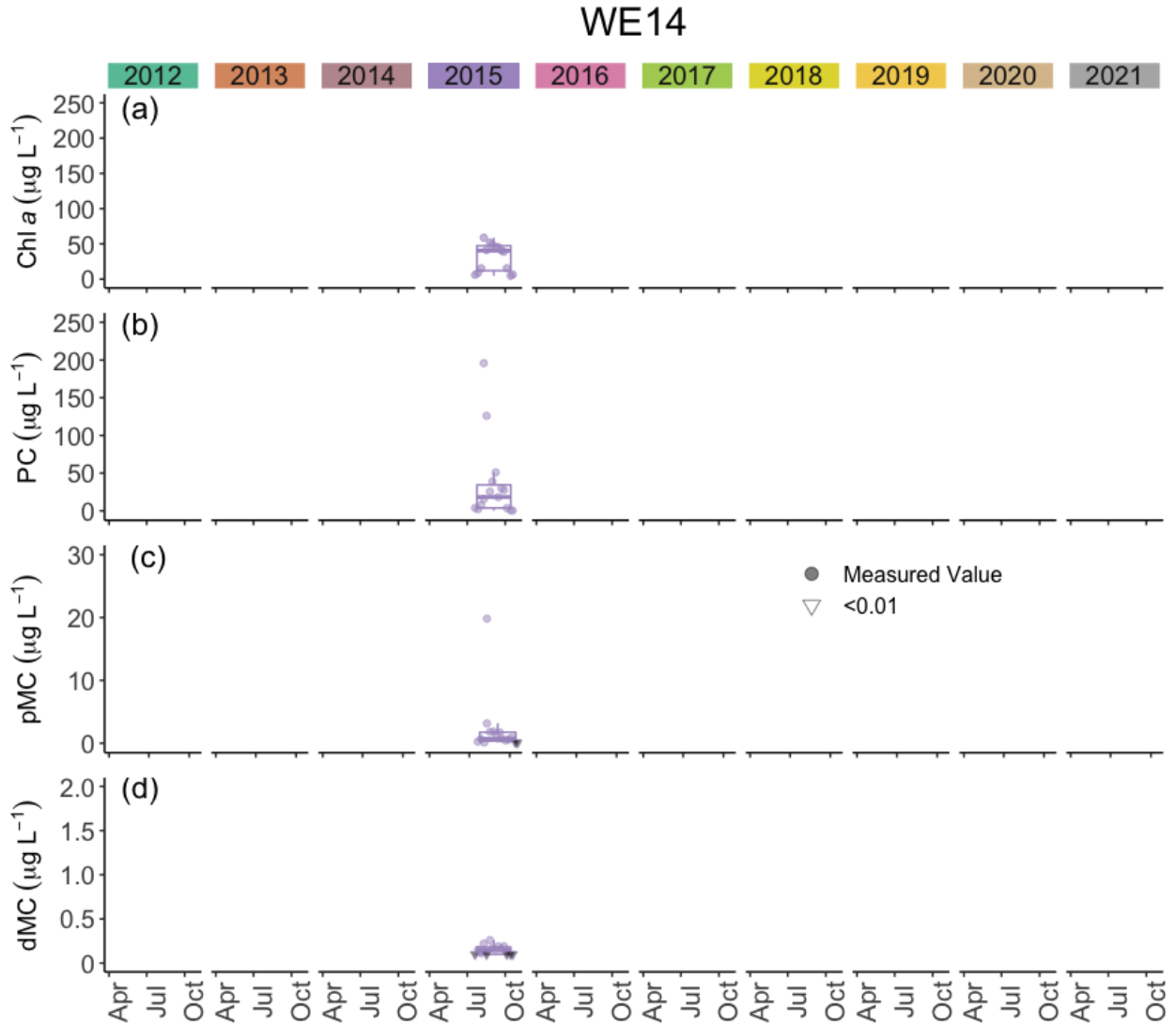


Figure S6. Concentrations of chlorophyll a (Chl a), phycocyanin (PC), particulate microcystins (pMC), and dissolved microcystins (dMC) at Station WE14 for all years sampled. Boxplots represent the median and 25% and 75% quartiles with whiskers extending to the highest or lowest point within 1.5x the interquartile range. A scatterplot is overlaid on the boxplots.

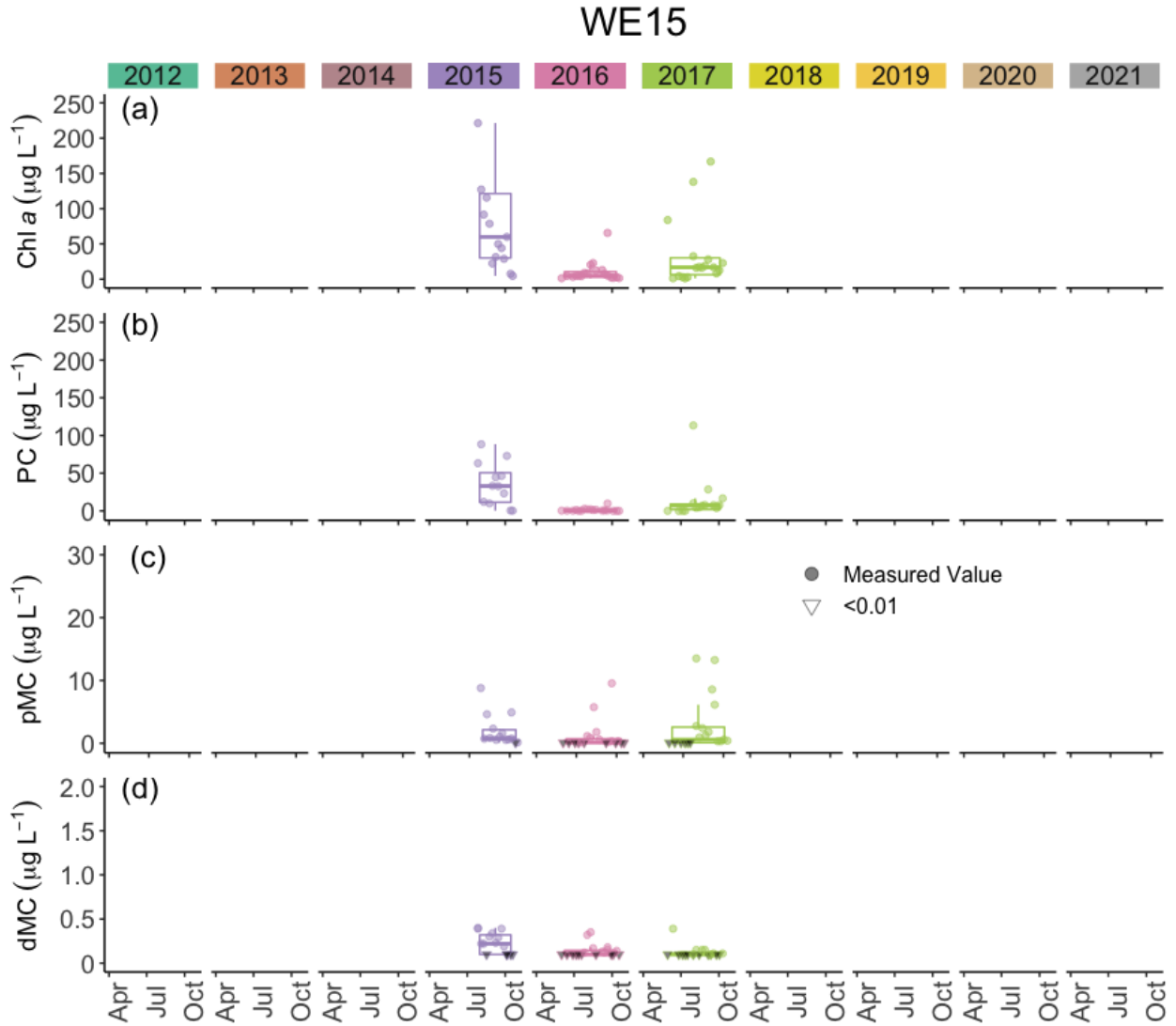


Figure S7. Concentrations of chlorophyll a (Chl a), phycocyanin (PC), particulate microcystins (pMC), and dissolved microcystins (dMC) at Station WE15 for all years sampled. Boxplots represent the median and 25% and 75% quartiles with whiskers extending to the highest or lowest point within 1.5x the interquartile range. A scatterplot is overlaid on the boxplots.

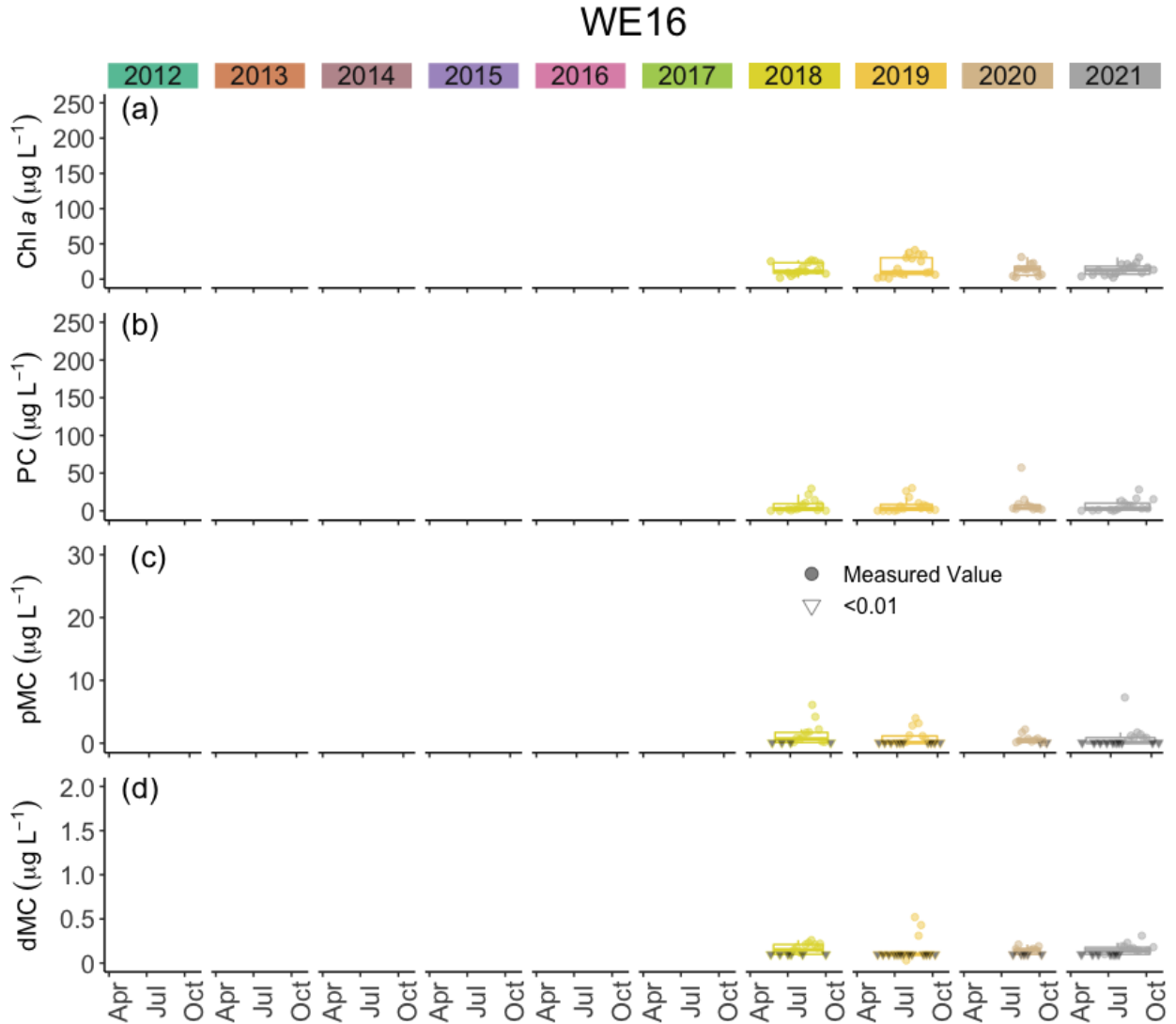


Figure S8. Concentrations of chlorophyll a (Chl a), phycocyanin (PC), particulate microcystins (pMC), and dissolved microcystins (dMC) at Station WE16 for all years sampled. Boxplots represent the median and 25% and 75% quartiles with whiskers extending to the highest or lowest point within 1.5x the interquartile range. A scatterplot is overlaid on the boxplots.

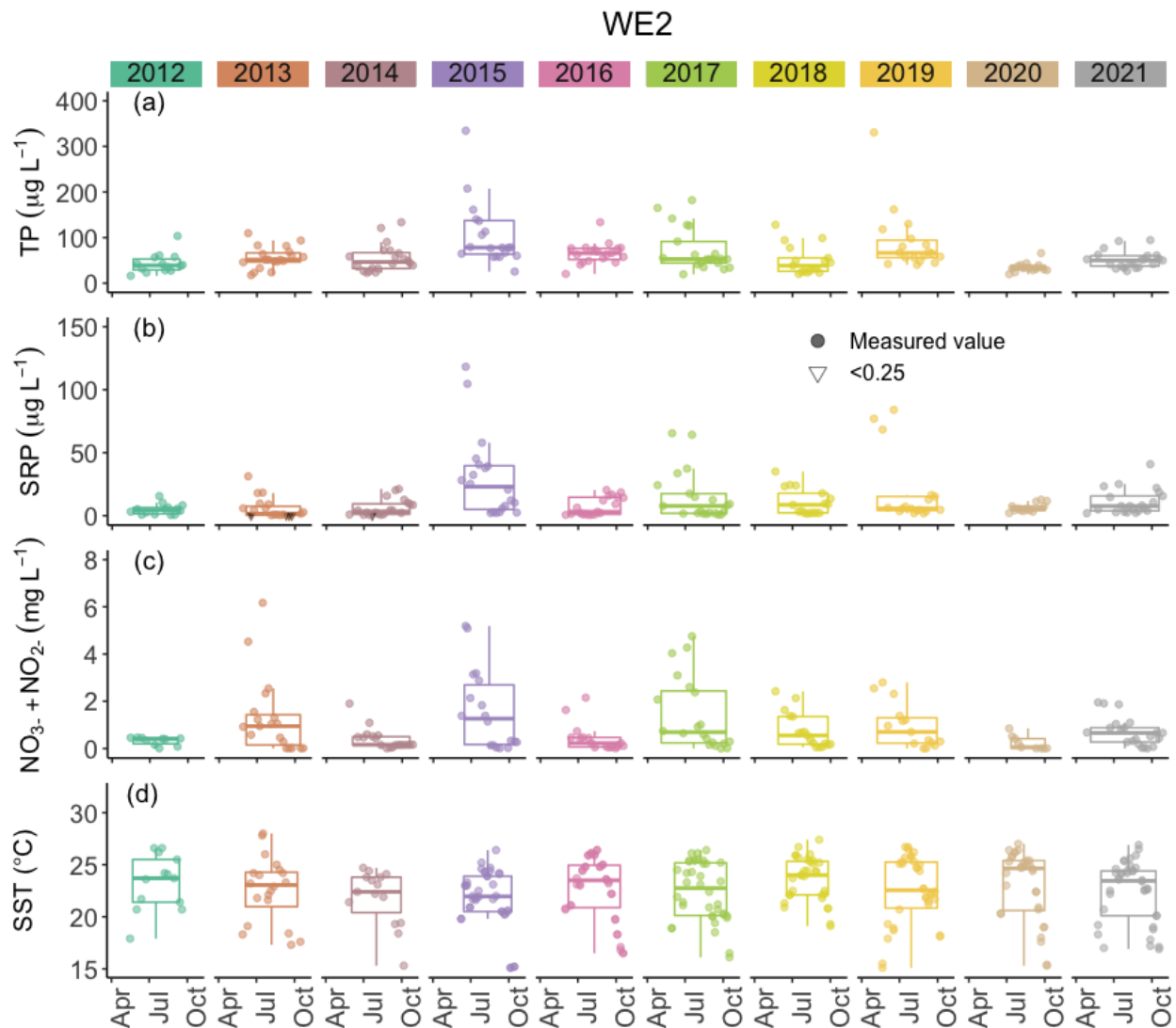


Figure S9. Concentrations of total phosphorus (TP), soluble reactive phosphorus (SRP), nitrate plus nitrite ($\text{NO}_3^- + \text{NO}_2^-$), and sea surface temperature (SST) at Station WE02 for all years sampled. Boxplots represent the median and 25% and 75% quartiles with whiskers extending to the highest or lowest point within 1.5x the interquartile range. A scatterplot is overlaid on the boxplots.

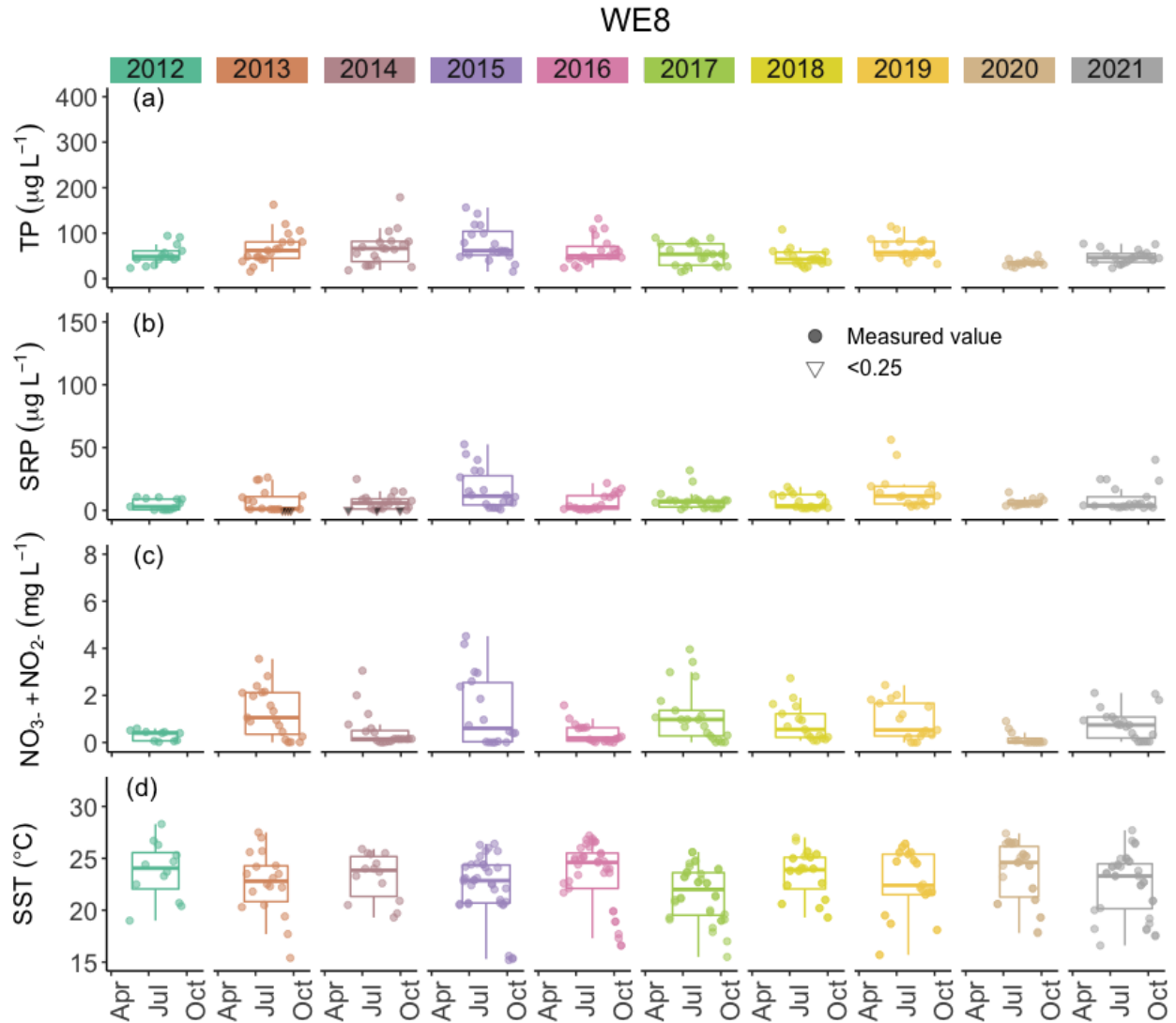


Figure S10. Concentrations of total phosphorus (TP), soluble reactive phosphorus (SRP), nitrate plus nitrite ($\text{NO}_3^- + \text{NO}_2^-$), and sea surface temperature (SST) at Station WE08 for all years sampled. Boxplots represent the median and 25% and 75% quartiles with whiskers extending to the highest or lowest point within 1.5x the interquartile range. A scatterplot is overlaid on the boxplots.

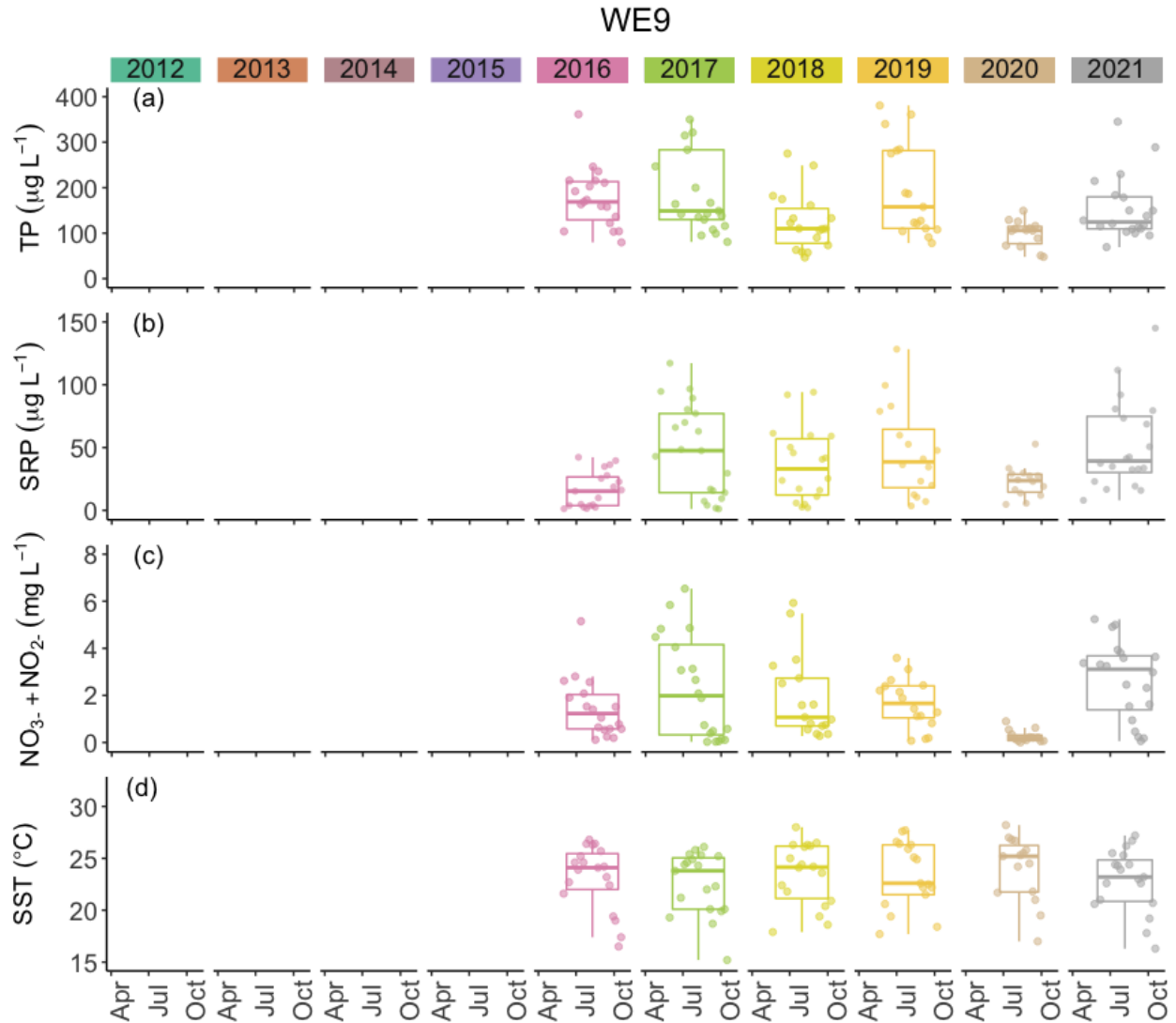


Figure S11. Concentrations of total phosphorus (TP), soluble reactive phosphorus (SRP), nitrate plus nitrite ($\text{NO}_3^- + \text{NO}_2^-$), and sea surface temperature (SST) at Station WE09 for all years sampled. Boxplots represent the median and 25% and 75% quartiles with whiskers extending to the highest or lowest point within 1.5x the interquartile range. A scatterplot is overlaid on the boxplots.

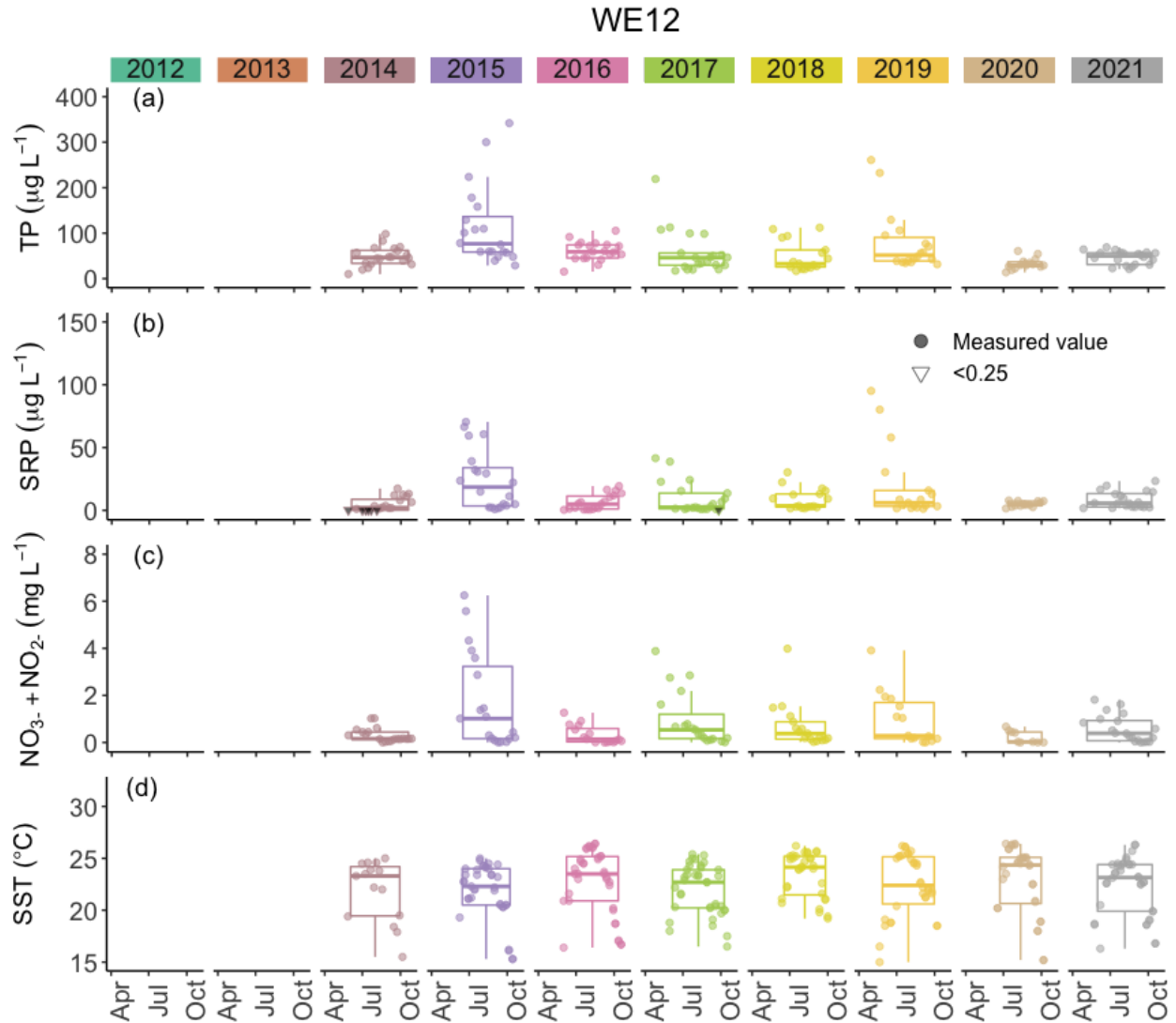


Figure S12. Concentrations of total phosphorus (TP), soluble reactive phosphorus (SRP), nitrate plus nitrite ($\text{NO}_3^- + \text{NO}_2^-$), and sea surface temperature (SST) at Station WE12 for all years sampled. Boxplots represent the median and 25% and 75% quartiles with whiskers extending to the highest or lowest point within 1.5x the interquartile range. A scatterplot is overlaid on the boxplots.

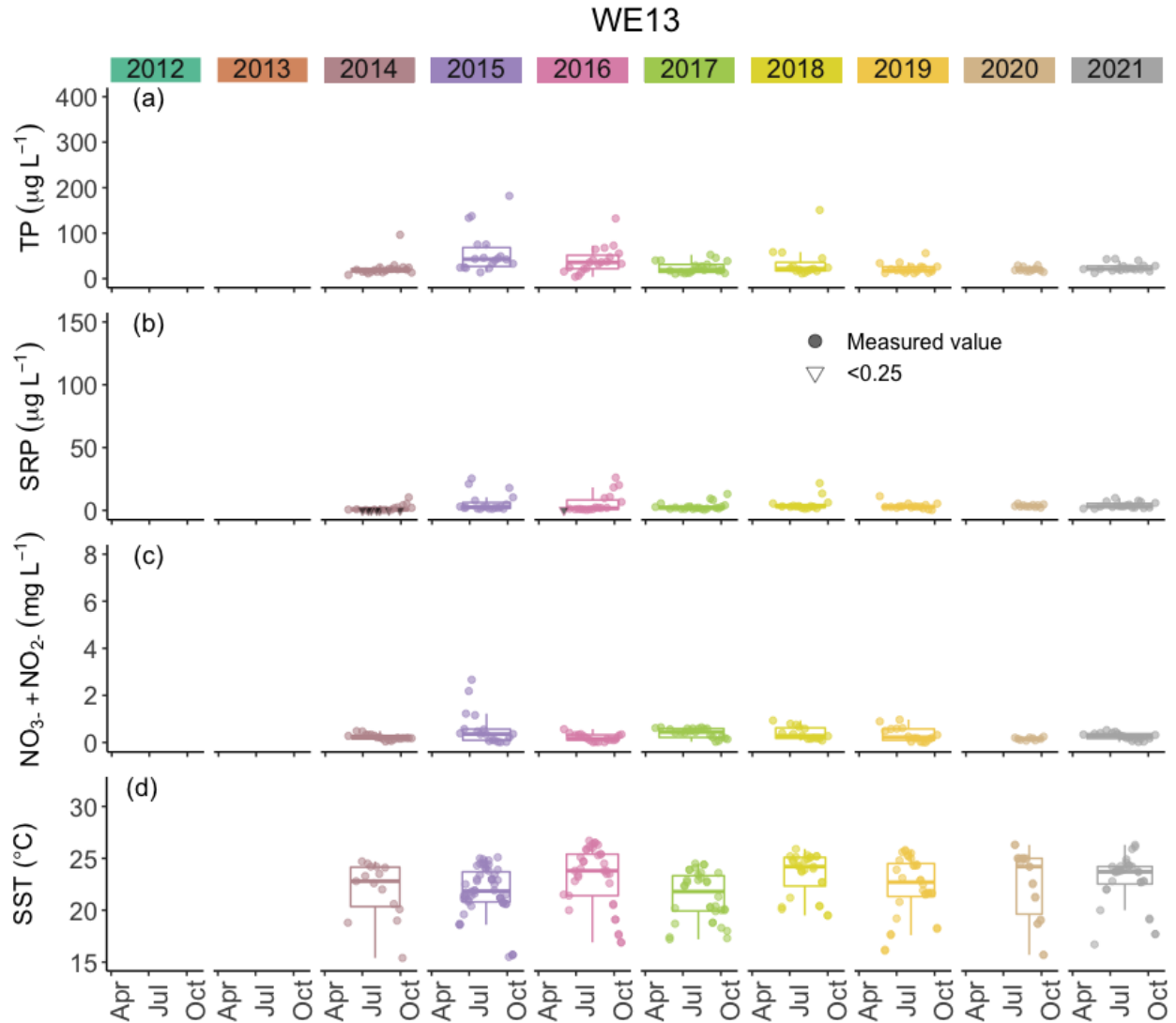


Figure S13. Concentrations of total phosphorus (TP), soluble reactive phosphorus (SRP), nitrate plus nitrite ($\text{NO}_3^- + \text{NO}_2^-$), and sea surface temperature (SST) at Station WE13 for all years sampled. Boxplots represent the median and 25% and 75% quartiles with whiskers extending to the highest or lowest point within 1.5x the interquartile range. A scatterplot is overlaid on the boxplots.

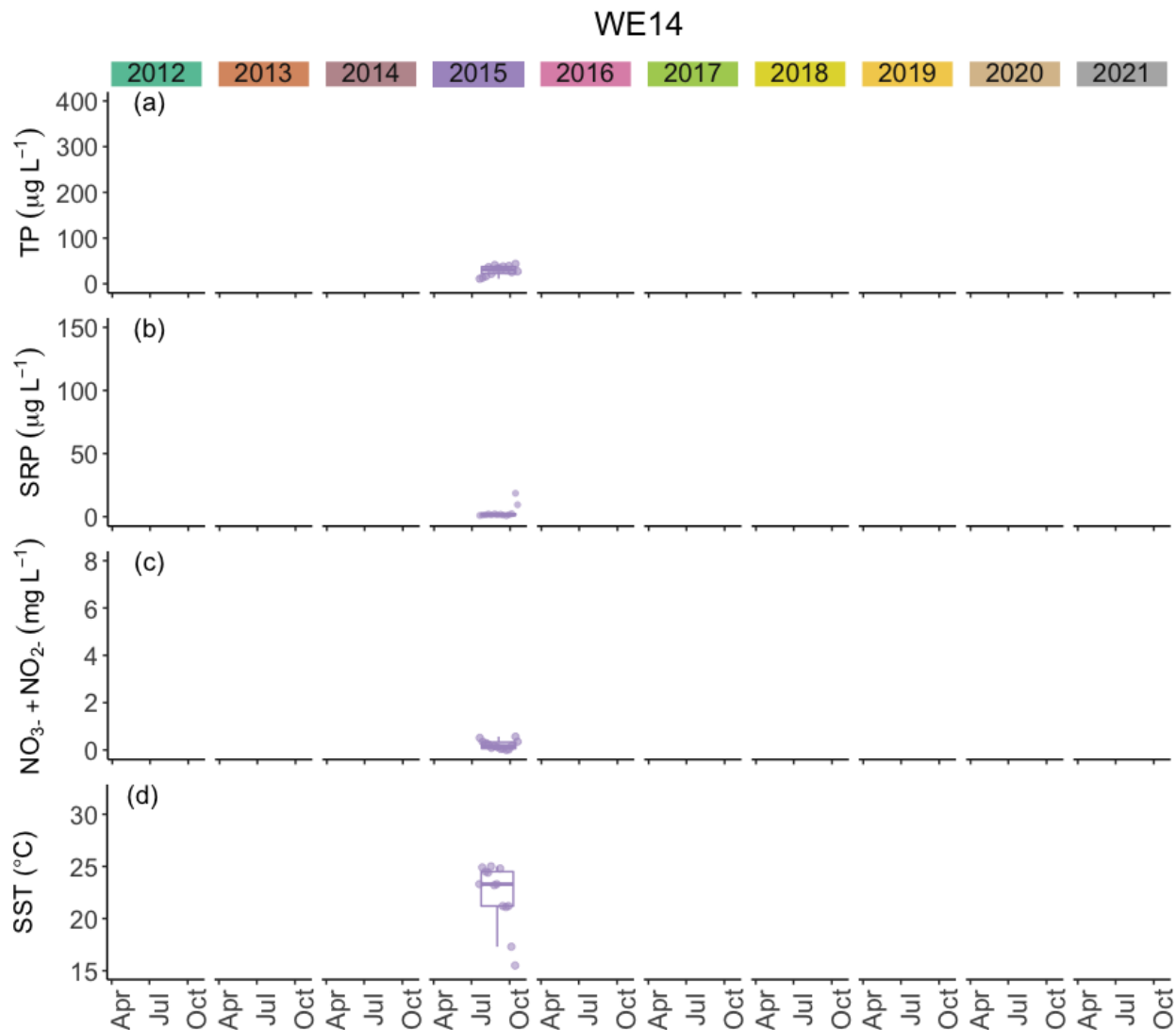


Figure S14. Concentrations of total phosphorus (TP), soluble reactive phosphorus (SRP), nitrate plus nitrite ($\text{NO}_3^- + \text{NO}_2^-$), and sea surface temperature (SST) at Station WE14 for all years sampled. Boxplots represent the median and 25% and 75% quartiles with whiskers extending to the highest or lowest point within 1.5x the interquartile range. A scatterplot is overlaid on the boxplots.

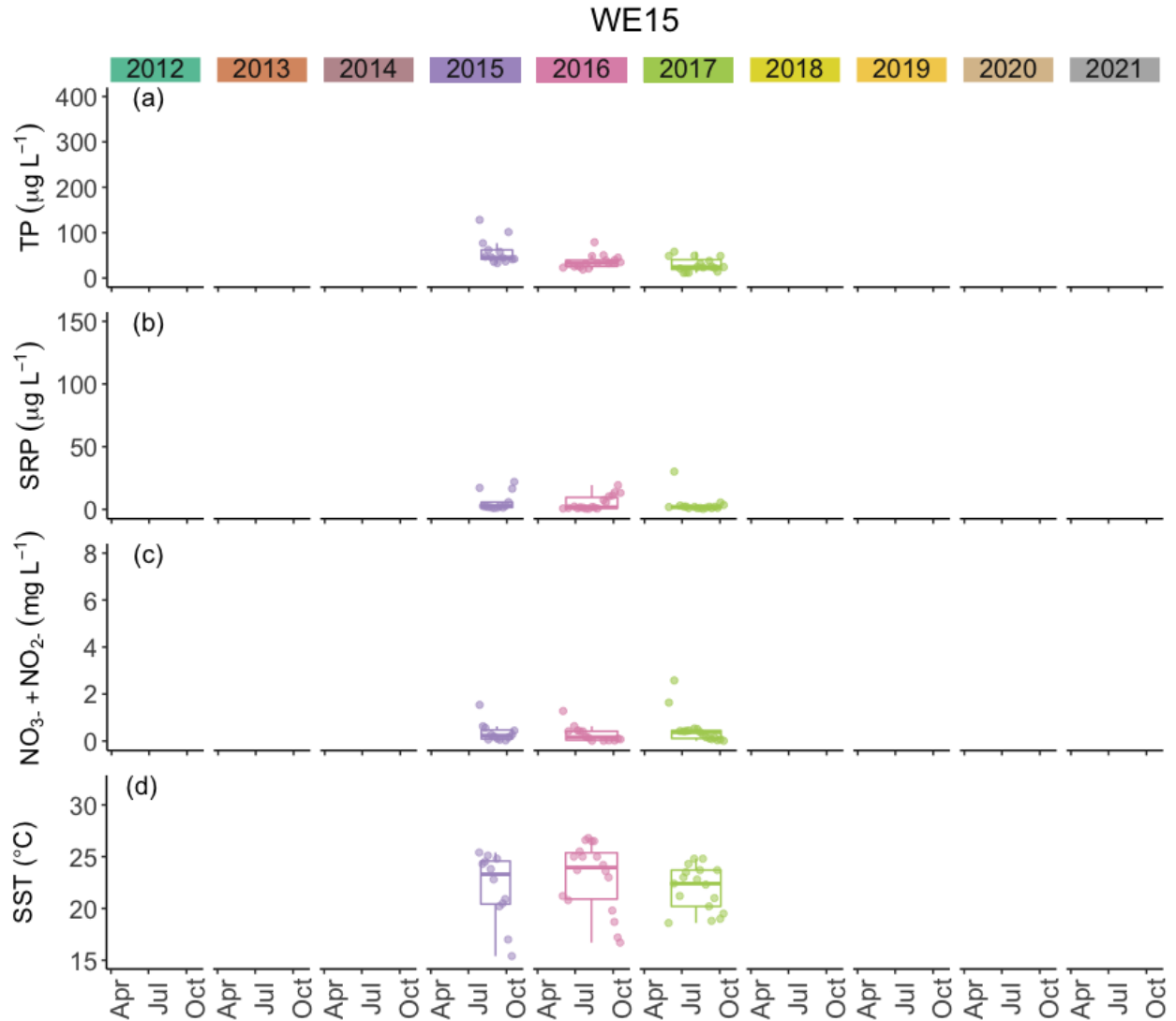


Figure S15. Concentrations of total phosphorus (TP), soluble reactive phosphorus (SRP), nitrate plus nitrite ($\text{NO}_3^- + \text{NO}_2^-$), and sea surface temperature (SST) at Station WE15 for all years sampled. Boxplots represent the median and 25% and 75% quartiles with whiskers extending to the highest or lowest point within 1.5x the interquartile range. A scatterplot is overlaid on the boxplots.

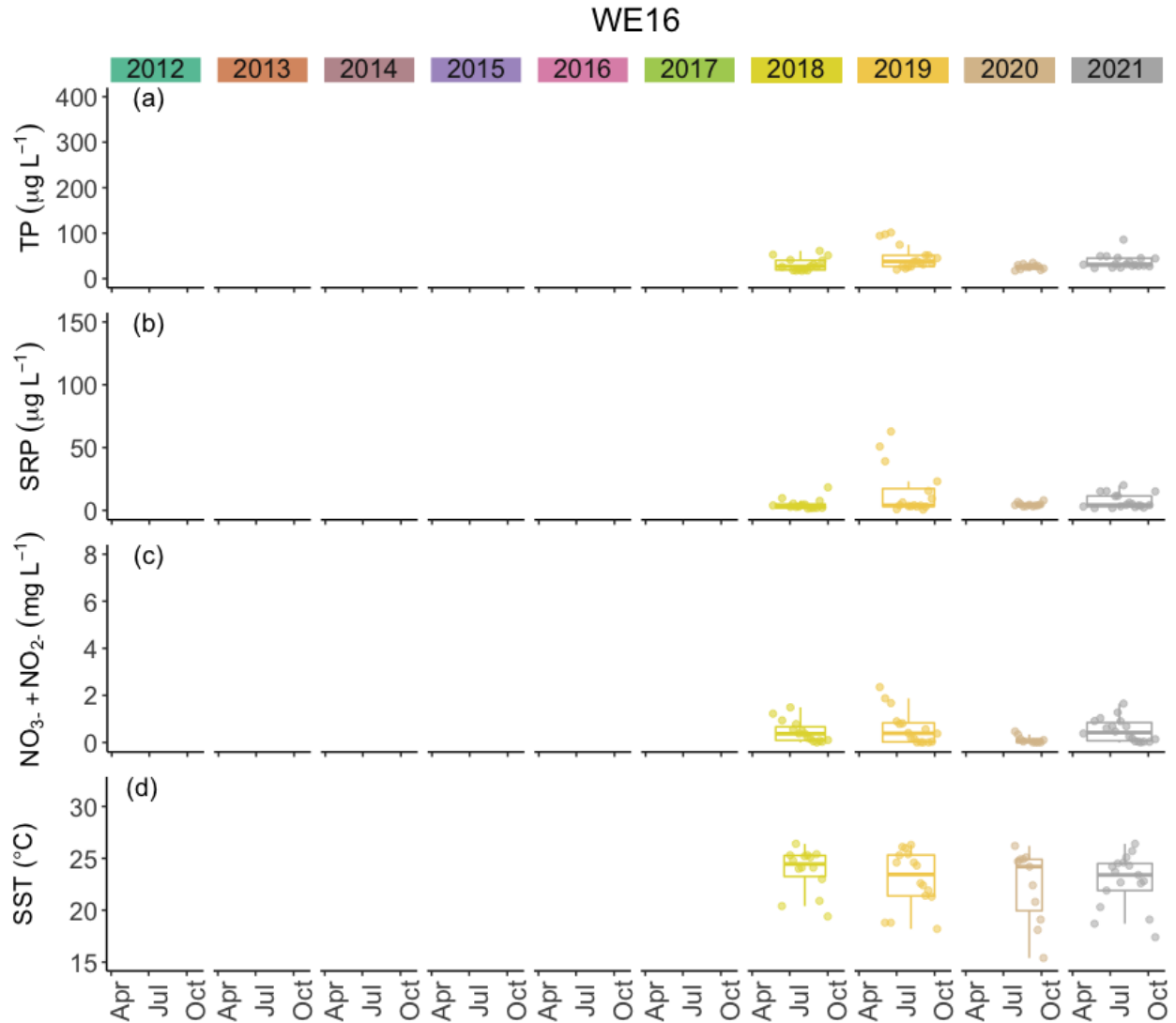


Figure S16. Concentrations of total phosphorus (TP), soluble reactive phosphorus (SRP), nitrate plus nitrite ($\text{NO}_3^- + \text{NO}_2^-$), and sea surface temperature (SST) at Station WE16 for all years sampled. Boxplots represent the median and 25% and 75% quartiles with whiskers extending to the highest or lowest point within 1.5x the interquartile range. A scatterplot is overlaid on the boxplots.