

# Annual Carbon Fluxes to (-ve) or from (+ve) the Atmosphere

Ocean Flux ( $S_{\text{OCEAN}}$ )

Land Flux ( $S_{\text{LAND}} - E_{\text{LUC}}$ )

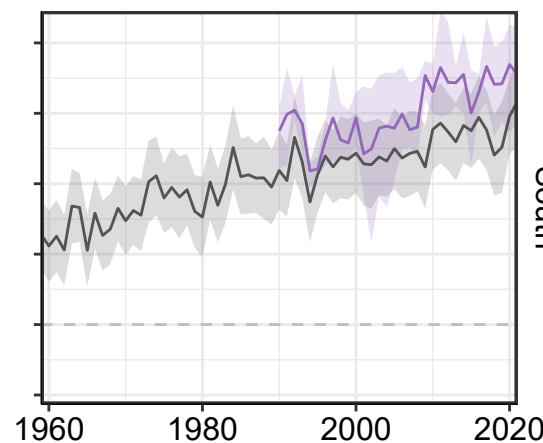
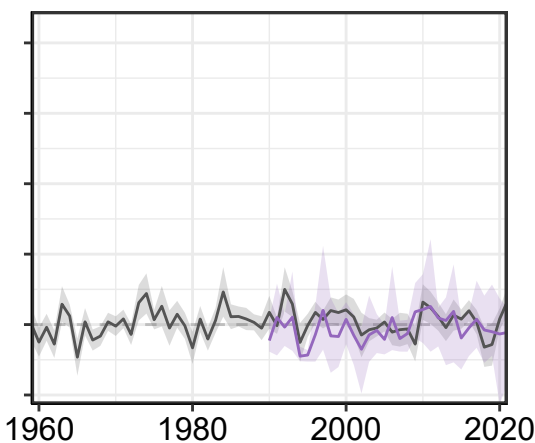
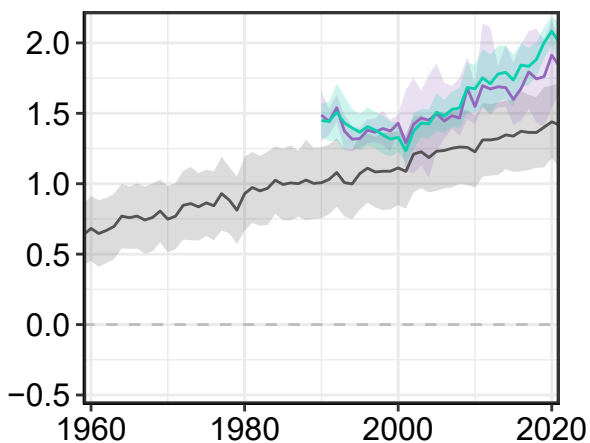
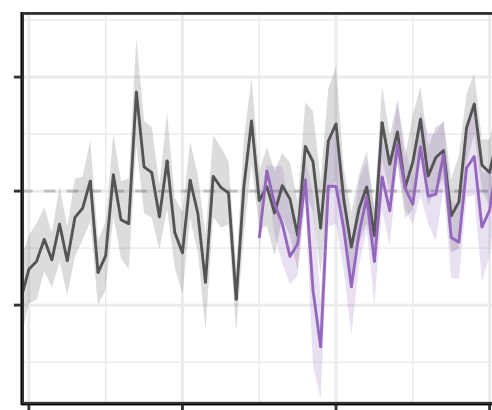
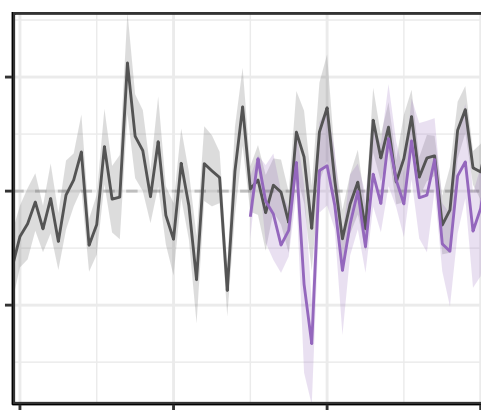
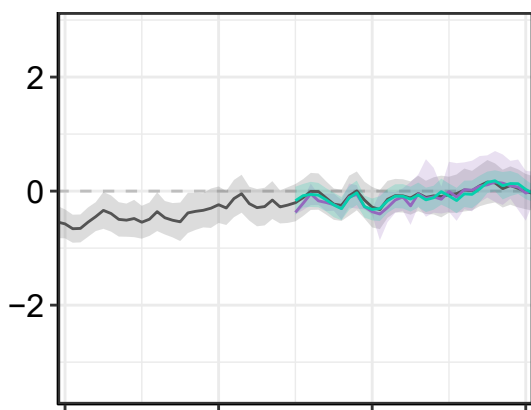
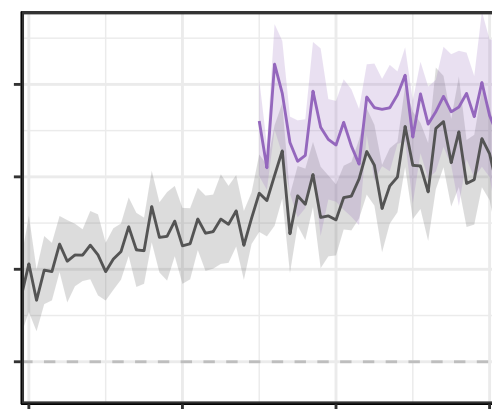
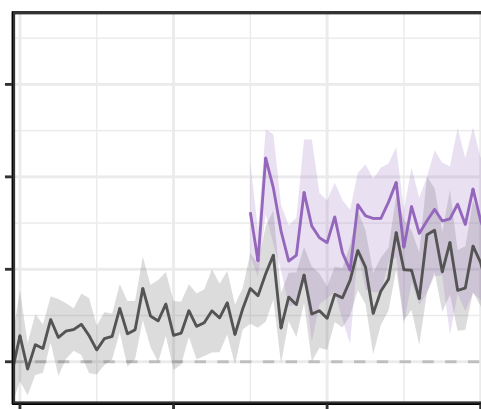
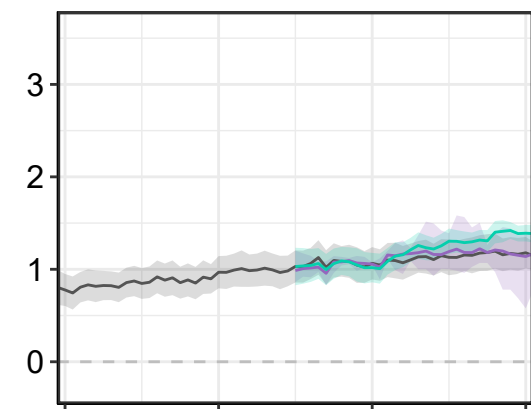
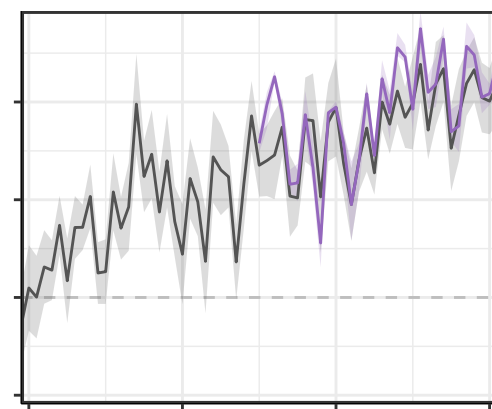
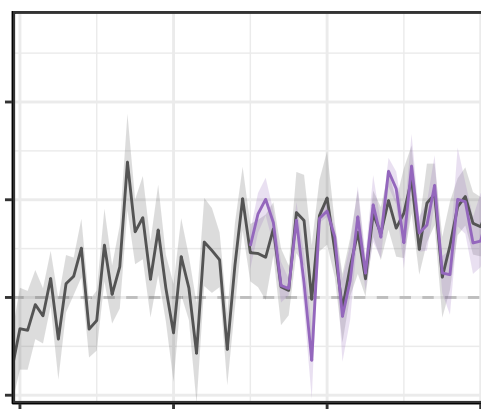
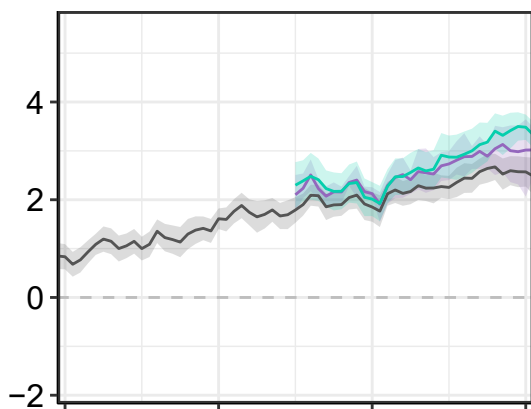
Total Flux ( $S_{\text{OCEAN}} + S_{\text{LAND}} - E_{\text{LUC}}$ )

Global

North

Tropics

South



— Process – based models (DGVMs and GOBMs) — Inversions — Data products