



Corrigendum to “Improved BEC SMOS Arctic Sea Surface Salinity product v3.1” published in Earth Syst. Sci. Data, 14, 307–323, 2022

Justino Martínez¹, Carolina Gabarró¹, Antonio Turiel¹, Verónica González-Gambau¹, Marta Umbert¹,
Nina Hoareau¹, Cristina González-Haro¹, Estrella Olmedo¹, Manuel Arias^{1,2}, Rafael Catany²,
Laurent Bertino³, Roshin P. Raj³, Jiping Xie³, Roberto Sabia⁴, and Diego Fernández⁵

¹ Barcelona Expert Center (BEC) and Institute of Marine Sciences (ICM),
CSIC, P. Marítim de la Barceloneta, 37–49, 08003 Barcelona, Spain

² ARGANS, Derriford, PL6 8BX Plymouth, UK

³ Nansen Environmental and Remote Sensing Center – NERSC, Jahnebakken 3, 5007 Bergen, Norway

⁴ Telespazio-Vega UK Ltd., for ESA-ESRIN, Largo Galileo Galilei 1, 00044 Frascati, Italy

⁵ ESA-ESRIN, Largo Galileo Galilei 1, 00044 Frascati, Italy

Correspondence: Carolina Gabarró (cgabarro@icm.csic.es)

Published: 3 February 2022

During submission of the paper, an error was introduced in Fig. 6. The plots were swapped. Please see the correct figure below.

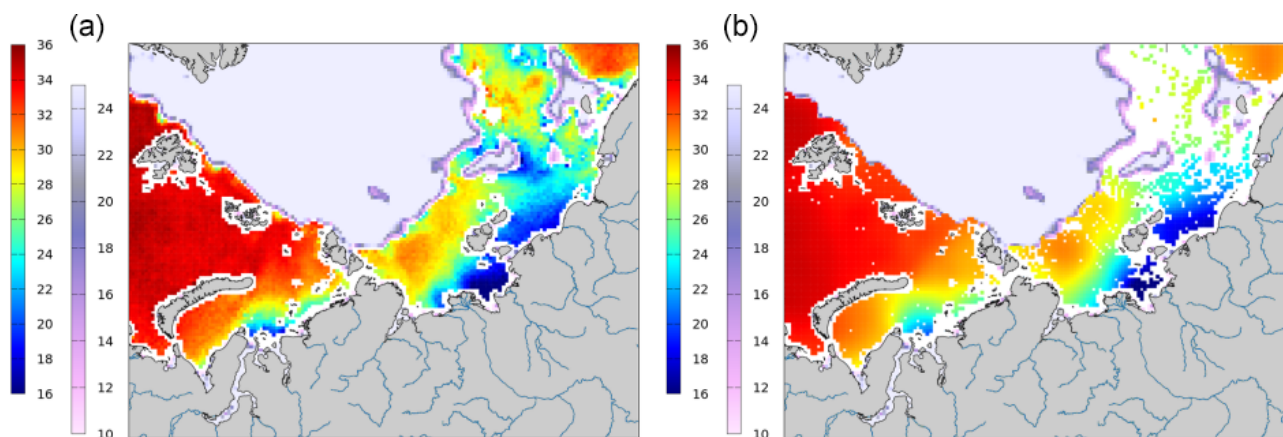


Figure 6. (a) Details of the Arctic+ v3.1 product from Fig. 5 together with the minimum sea ice concentration provided by OSI SAF for the period 11–19 August 2012. (b) Same region but for Arctic+v2.0. The right color bar indicates sea ice concentration, whereas the left color bar indicates salinity.