



Supplement of

A 30 m annual maize phenology dataset from 1985 to 2020 in China

Quandi Niu et al.

Correspondence to: Jianxi Huang (jxhuang@cau.edu.cn)

The copyright of individual parts of the supplement might differ from the article licence.

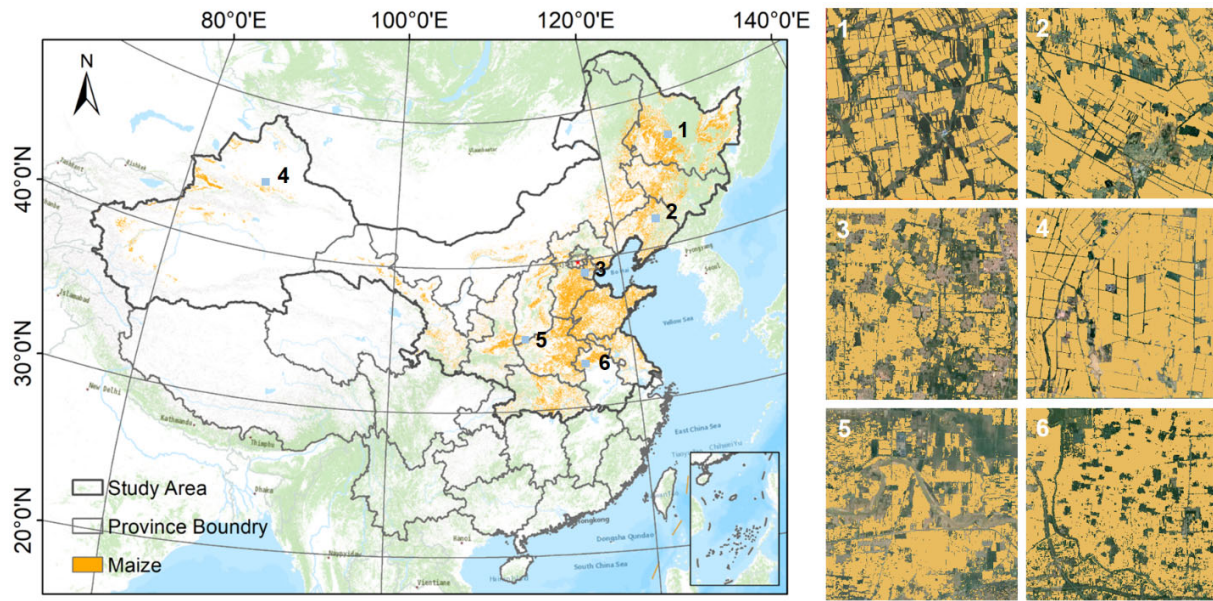


Fig. S1: Distribution of maize within the study area and we provided the detailed maize map at six different sites. The base map of the figure is from ESRI.

Table S1 The selected three representative cases of phenology comparison between MODIS and Landsat derived results.

Site	Midgreendown		Dormancy		Senescence	
	R	RMSE	R	RMSE	R	RMSE
1	0.68	3.35	0.66	24.82	0.57	27.13
2	0.84	3.70	0.87	24.44	0.47	25.35
3	0.64	4.54	0.43	19.35	0.56	18.17