



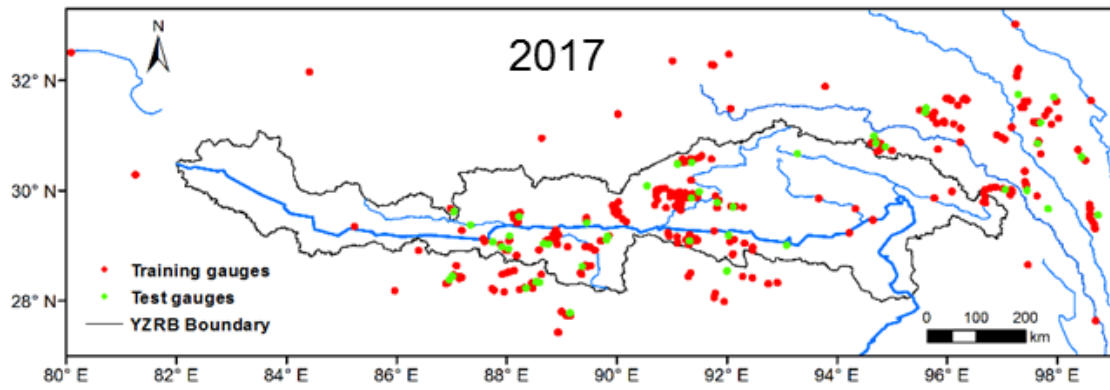
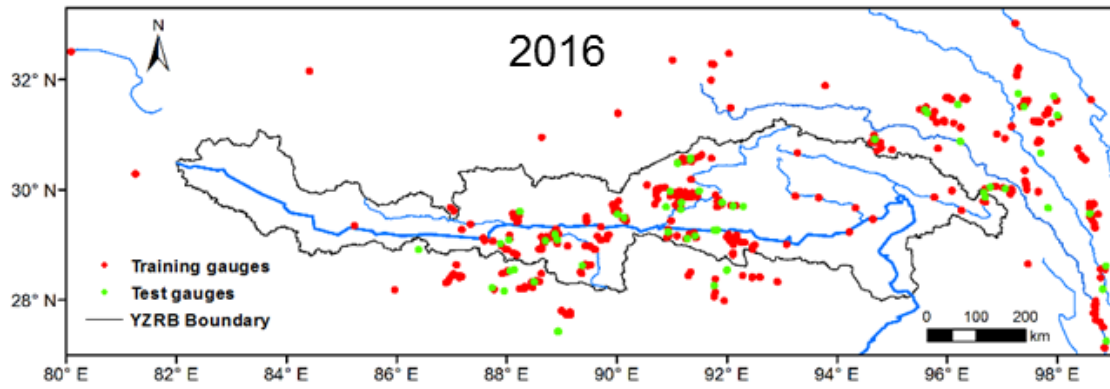
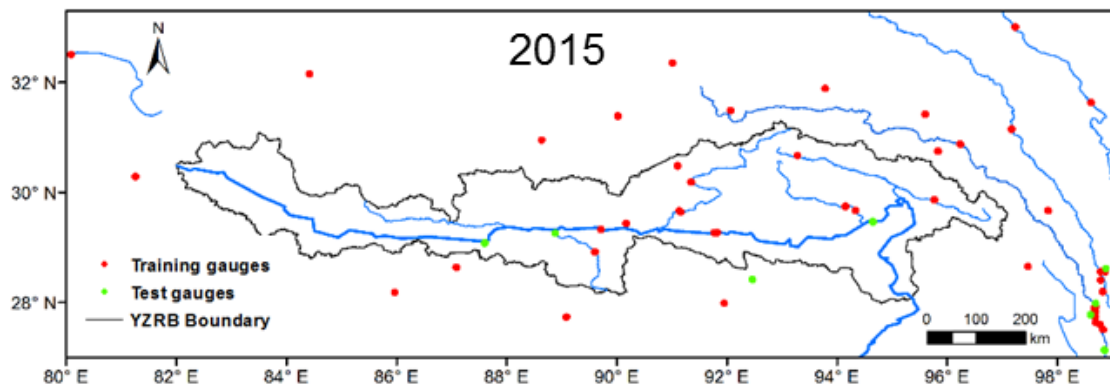
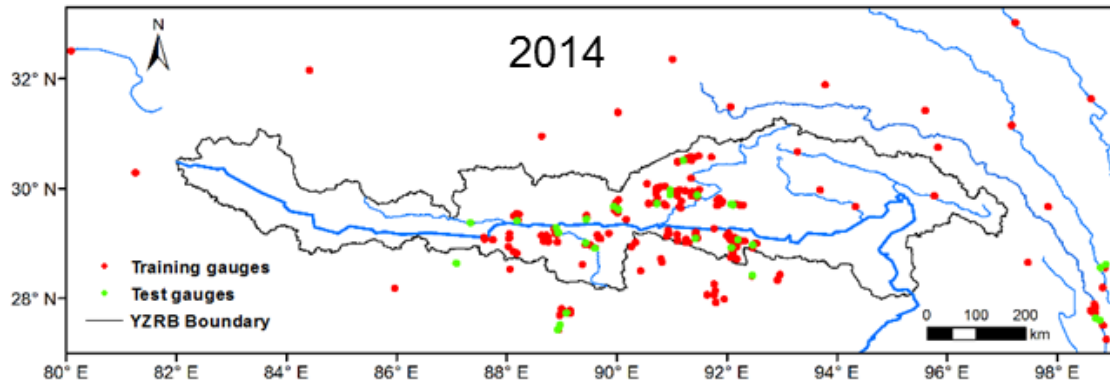
*Supplement of*

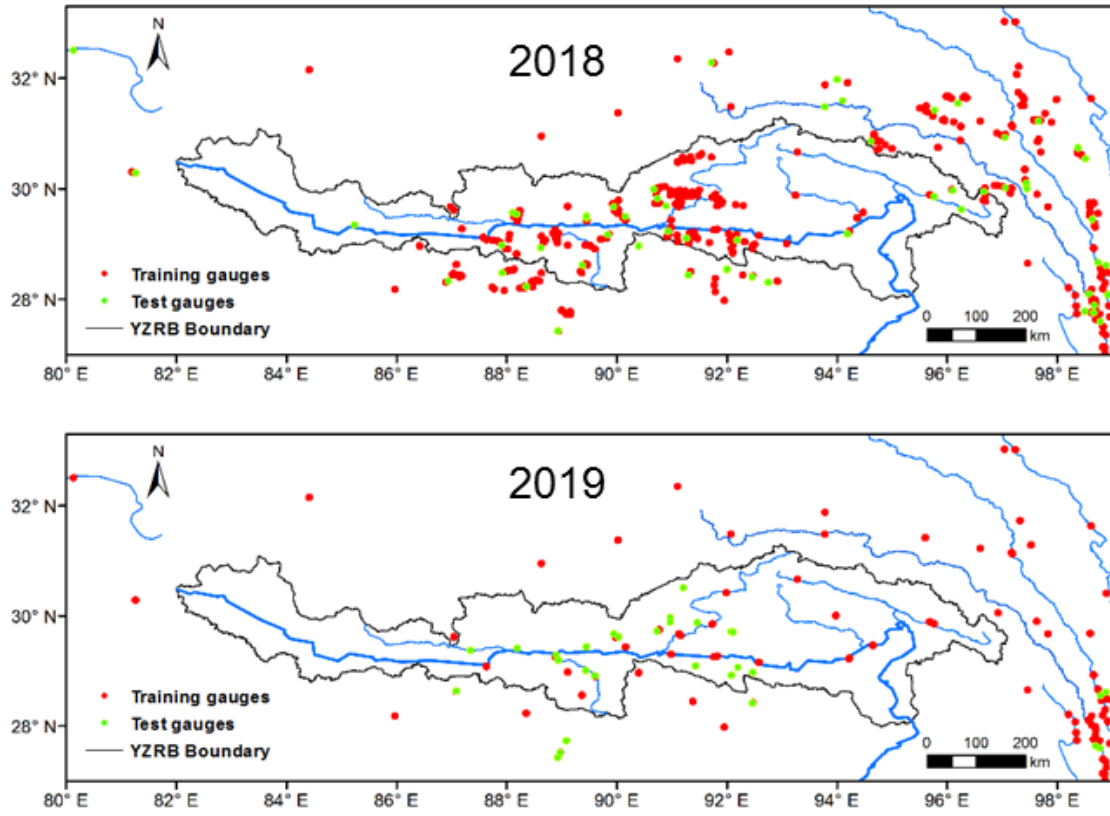
**A high-accuracy rainfall dataset by merging multiple satellites and dense gauges over the southern Tibetan Plateau for 2014–2019 warm seasons**

**Kunbiao Li et al.**

*Correspondence to:* Fuqiang Tian ([tianfq@mail.tsinghua.edu.cn](mailto:tianfq@mail.tsinghua.edu.cn))

The copyright of individual parts of the supplement might differ from the article licence.





3

4 Figure S1. Spatial distributions of rain gauges for training (red dots) and test (green dots) over  
 5 southern Tibetan Plateau in 2014-2019. Black polygon refers to the area of Yarlung Zangbo River  
 6 Basin.