



Corrigendum to “A synthesis dataset of permafrost thermal state for the Qinghai–Tibet (Xizang) Plateau, China” published in Earth Syst. Sci. Data, 13, 4207–4218, 2021

Lin Zhao^{1,2}, Defu Zou², Guojie Hu², Tonghua Wu², Erji Du², Guangyue Liu², Yao Xiao², Ren Li²,
Qiangqiang Pang², Yongping Qiao², Xiaodong Wu², Zhe Sun², Zanpin Xing², Yu Sheng³,
Yonghua Zhao², Jianzong Shi², Changwei Xie², Lingxiao Wang¹, Chong Wang¹, and Guodong Cheng²

¹School of Geographical Sciences, Nanjing University of Information Science & Technology,
Nanjing 210044, China

²Cryosphere Research Station on Qinghai–Xizang Plateau, State Key Laboratory of Cryospheric Sciences,
Northwest Institute of Eco-Environment and Resources, Chinese Academy of Sciences, Lanzhou 730000, China

³State Key Laboratory of Frozen Soil Engineering, Northwest Institute of Eco-Environment and Resources,
Chinese Academy of Sciences, Lanzhou 730000, China

Correspondence: Lin Zhao (lzhao@nuist.edu.cn) and Guojie Hu (huguojie123@lzb.ac.cn)

Published: 12 November 2021

During submission, an incorrect sentence was provided. The sentence “The warming rates at a depth of 10 m ranged from 0.02 °C per decade (FCKGT) to 0.78 °C per decade (QTB05) but varied between 0 °C per decade and 0.24 °C per decade at a depth of 20 m.” should be changed to the following: “The warming rates at a depth of 10 m ranged from 0.02 °C per decade (FCKGT) to 0.78 °C per decade (QTB15) but varied between 0 °C per decade and 0.24 °C per decade at a depth of 20 m.”

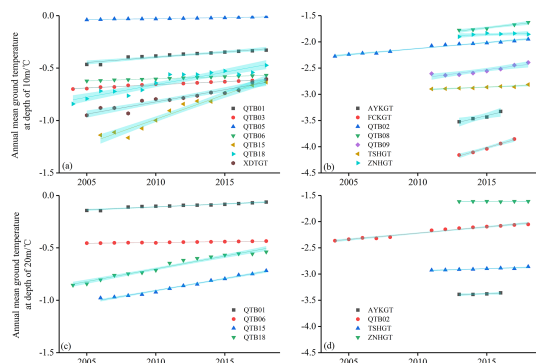


Figure 10. Annual mean ground temperature as a function of time at a depth of (a, b) 10 m and (c, d) 20 m from the boreholes with continuous data series.

Also, the wrong files for Figs. 10 and 11 were inadvertently uploaded. The correct figures and their captions are now as follows.

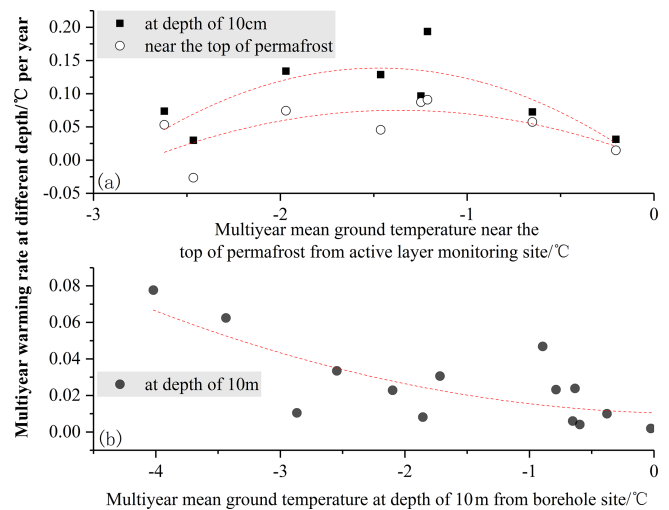


Figure 11. The relationship between warming rate and multiyear mean ground temperature during the observation period from the (a) active layer monitoring site and the (b) borehole site.