



Supplement of

ChinaCropPhen1km: a high-resolution crop phenological dataset for three staple crops in China during 2000–2015 based on leaf area index (LAI) products

Yuchuan Luo et al.

Correspondence to: Zhao Zhang (sunny_zhang@bnu.edu.cn)

The copyright of individual parts of the supplement might differ from the CC BY 4.0 License.

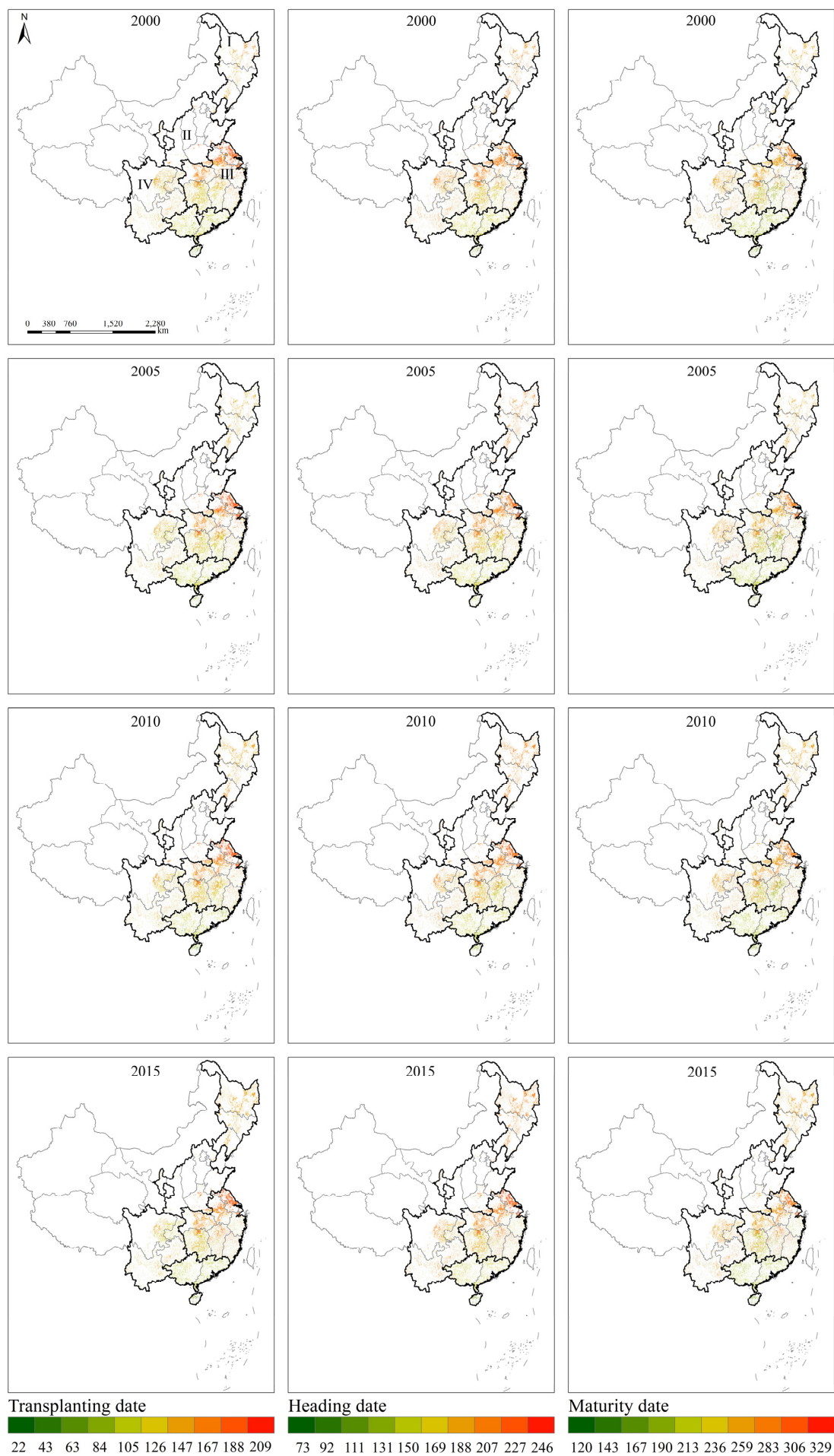


Fig. S1 Spatial patterns of annual three key phenological dates during 2000~2015 for rice.

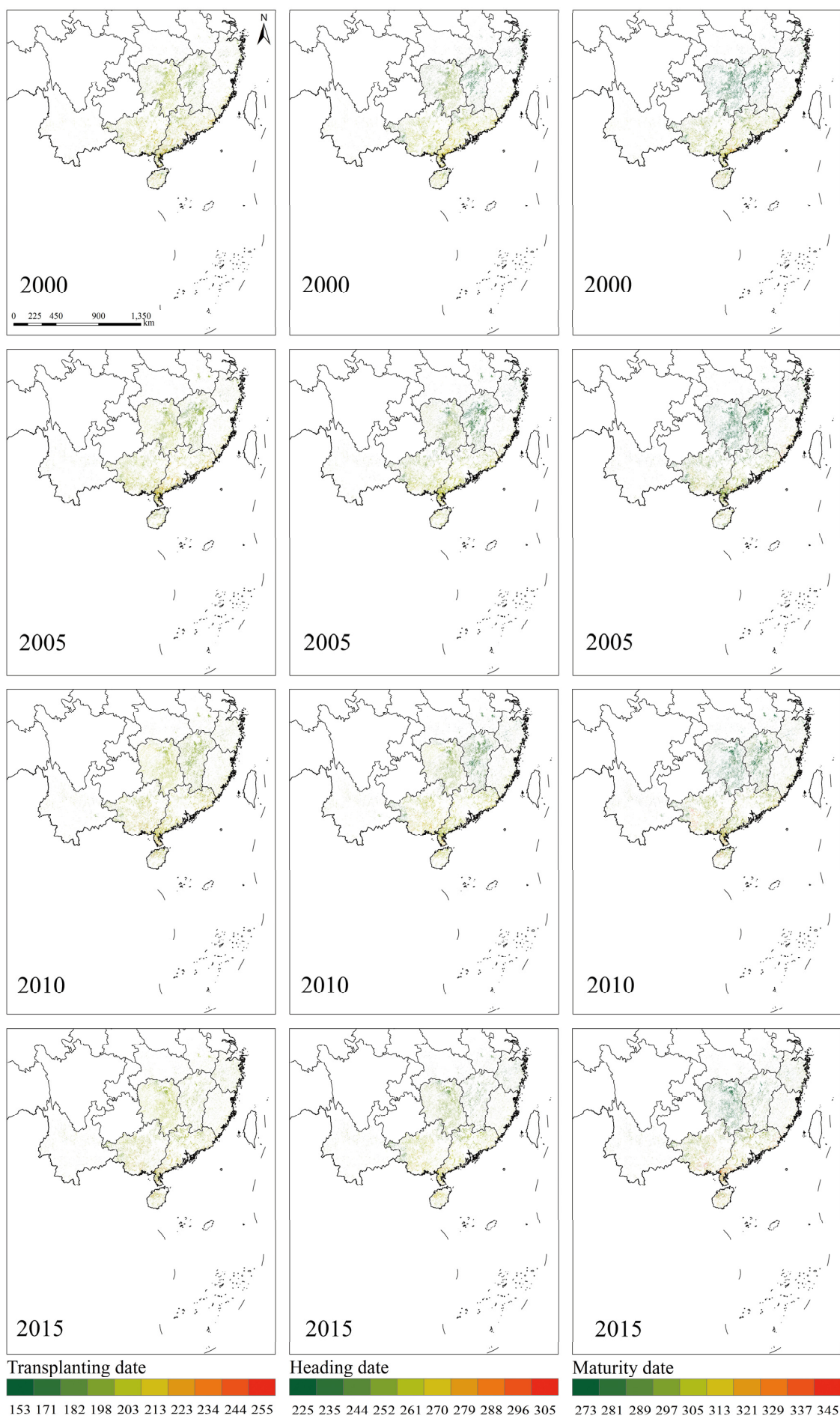


Fig. S2 Spatial patterns of annual three key phenological dates during 2000~2015 for late-rice.

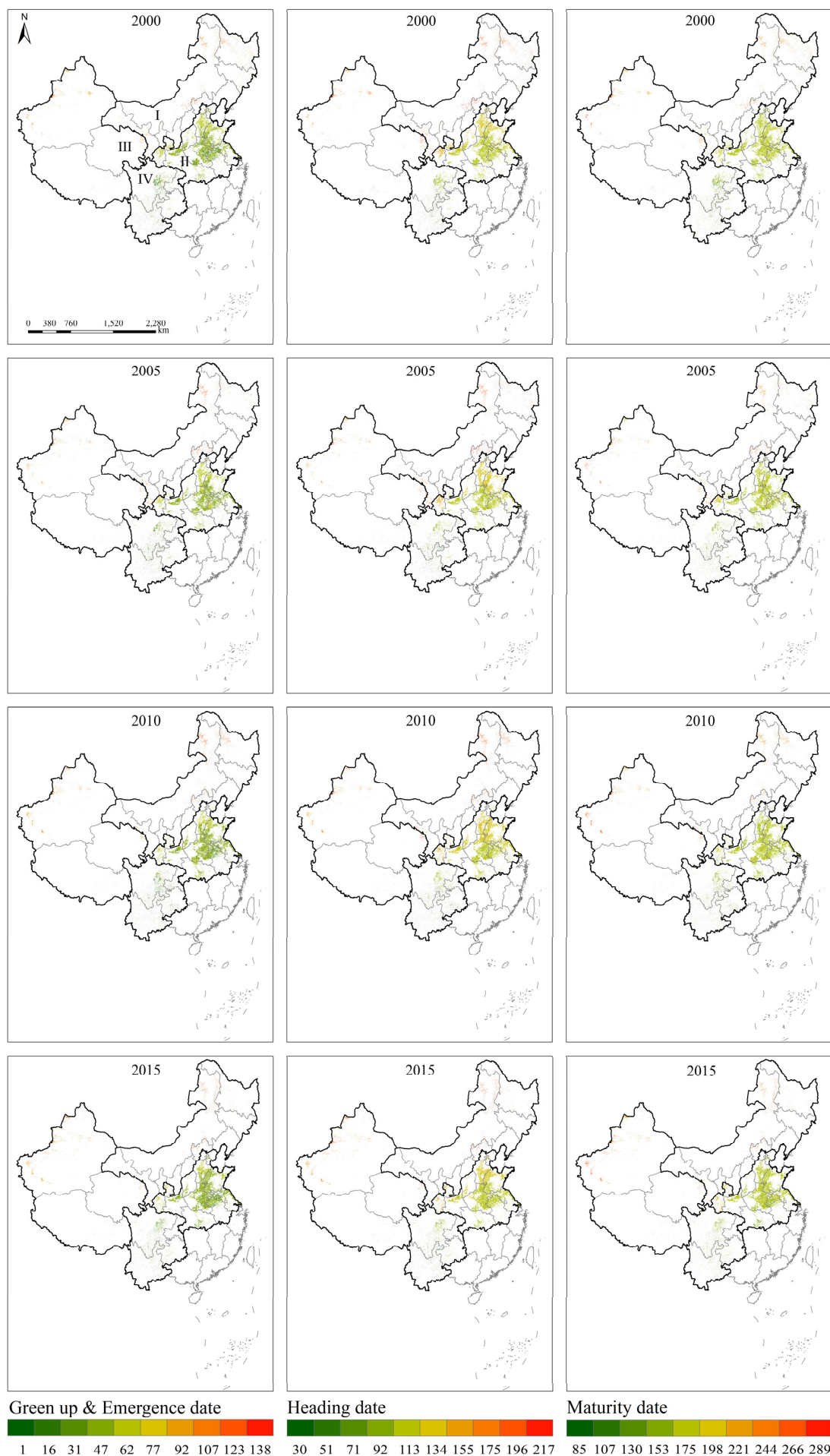


Fig. S3 Spatial patterns of annual three key phenological dates during 2000~2015 for wheat.

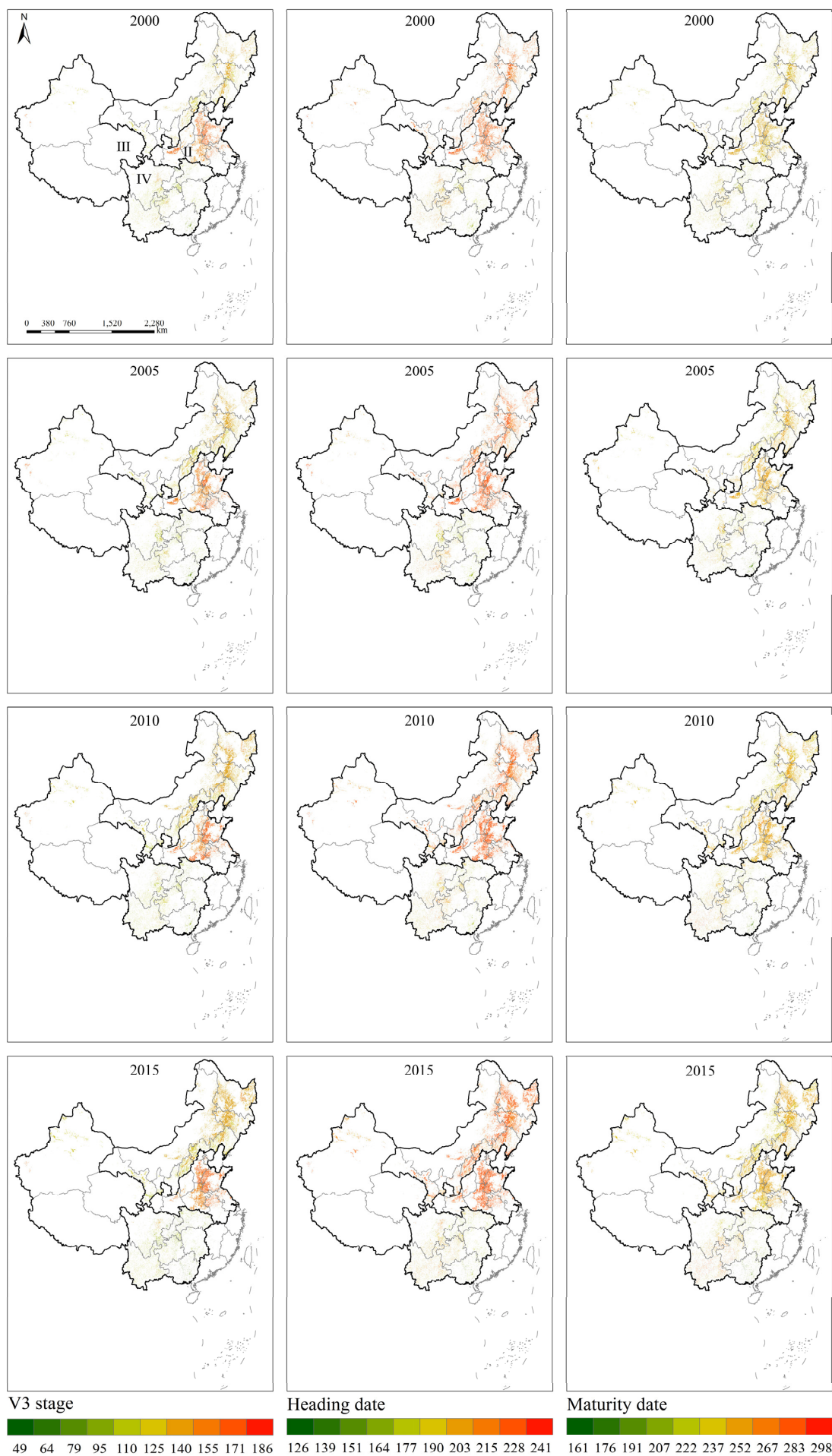


Fig. S4 Spatial patterns of annual three key phenological dates during 2000~2015 for maize

Table S1. Details of the subregions for rice.

Items	I	II	III	IV	V
Location	Northeast China	North China Plain	The middle and lower reaches of Yangtze River	Southwest China	Southern China
Dominant crops	Single-rice	Single-rice	Single-rice; Double cropping rice	Single-rice	Double cropping rice
Cropping System	Single cropping	Single cropping	Double or Triple cropping	Double or Triple cropping	Double or Triple cropping
Climate type	Temperate	Subtropical	Subtropical	Subtropical	Subtropical
Annual mean temperature (°C)	1~7	9~15	15~18	16~24	17~24
Annual total precipitation (mm)	400~1000	580~1000	700~1300	800~1600	1000~2000
Annual accumulated temperature (>10 °C)	2000~3100	2750~4900	4500~5500	3500~6000	6500~8000
Proportion of total planting area (%)	14.7	3.2	51.2	14.8	16.1

Table S2. Details of the subregions for wheat.

Items	I	II	III	IV
Location	Northern China	North China Plain	Western China	Southwest China
Dominant crops	Spring wheat	Winter wheat	Spring wheat	Winter wheat
Cropping System	Single cropping	Double cropping	Single cropping	Double or Triple cropping
Climate type	Temperate	Subtropical	Plateau climate; Temperate	Subtropical
Annual mean temperature (°C)	1~13	9~15	5~10	16~24
Annual total precipitation (mm)	400~980	580~1000	200~400	800~1600
Annual accumulated temperature (>10 °C)	2000~4900	2750~4900	2056~3615	3500~6000
Proportion of total planting area (%)	15.7	72.1	5.6	6.6

Table S3. Details of the subregions for maize.

	I	II	III	IV
Location	Northern China	North China Plain	Western China	Southern China
Dominant crops	Spring maize	Summer maize	Spring maize; Summer maize	Spring maize; Summer maize
Cropping System	Single cropping	Double cropping	Single or Double cropping	Double or Triple cropping
Climate type	Temperate	Subtropical	Plateau climate; Temperate	Subtropical
Annual mean temperature (°C)	1~13	9~15	5~10	16~24
Annual total precipitation (mm)	400~980	580~1000	200~400	800~1600
Annual accumulated temperature (>10 °C)	2000~4900	2750~4900	2056~3615	3500~6000
Proportion of total planting area (%)	43.7	38.1	2.6	15.6