



Supplement of

New 30 m resolution Hong Kong climate, vegetation, and topography rasters indicate greater spatial variation than global grids within an urban mosaic

Brett Morgan and Benoît Guénard

Correspondence to: Brett Morgan (brettmorgan2@gmail.com)

The copyright of individual parts of the supplement might differ from the CC BY 4.0 License.

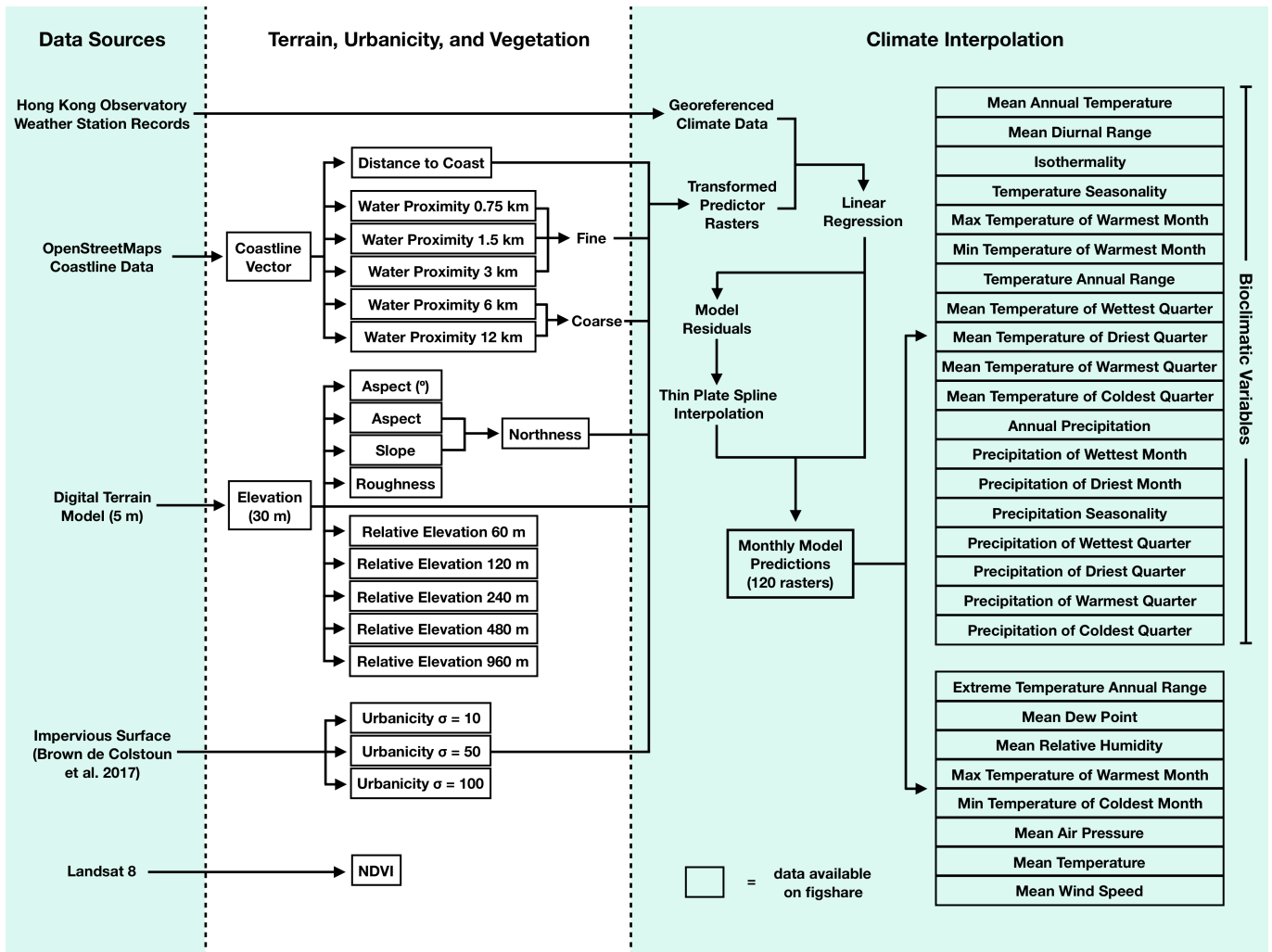


Figure S1. Schematic of data products and the sources that informed them. Items enclosed in a box represent the files available for download from the figshare repository.

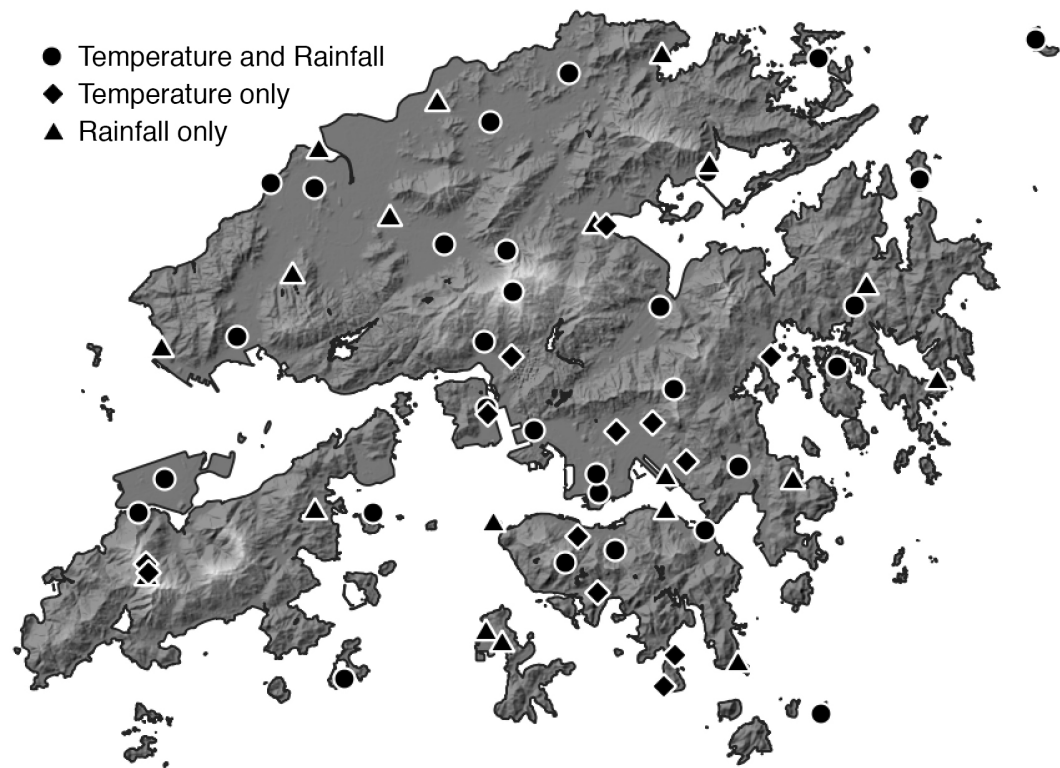


Figure S2. Permanent weather stations operated by the Hong Kong Observatory. Symbols indicate what type of data is available from each station: temperature, rainfall, or both.